

SUBJECT 14

SUBJECT 14: Business or Office Machines

Re: Business or Office Machines

Contact: Lanae Peterson

FCDC@nmfta.org

Proponent: Freight Classification Development Council

Quick View

The Quick View feature is not intended to replace contextual information within this document. To understand the potential impact of the recommended changes shown here, please read the full proposal.

Subject 14: Business or Office Machines

Quick View: Twenty-one items related to business or office machines are canceled with reference to a new item, which provides a “viz.” format, and classes based on the FCDC’s 13-sub density scale.

- Six Notes canceled and reestablished attendant to the new item
- Subgeneric heading, item 115700, canceled with no further application
- Notes, items 116031 and 116051 canceled with no further application
- Item 115800 canceled as obsolete
- Item (Rule) 172 amended

Transportation Characteristics Present:

- Handling Yes No Stowability Yes No Liability Yes No Density Yes No

Provisions based on:

- FCDC’s 13-sub density scale

SUBJECT 14

Present Classification Provisions

Item	Description	Class
	MACHINERY GROUP: subject to item 114000	
115700	Business or Office:	
115760	Adding Machines or Calculators , NOI, see Note, item 115762, or Parts thereof , NOI, in boxes	100
115762	NOTE—Applies only on hand portable or desktop adding machines or calculating machines (calculators).	
115780	Addressing or Imprinting Machines , in boxes or crates.....	100
115800	Bookkeeping Machines or Parts , NOI, in boxes	100
115860	Check Boxes , cash register, in boxes	100
115900	Coin Changers or Holders , metal, NOI, in boxes	100
115910	Doors or Panels , data processing machine, steel, 18 gauge or thicker, with or without handles, louvers or fastening devices, in packages	77.5
115920	Embossing Machines , identification tag, including military-style identification tag, used or reconditioned, in boxes or crates	70
115940	Envelope Sealing Machines, or Envelope Sealing and Stamping Machines combined:	
Sub 1	SU, in boxes	150
Sub 2	KD, in boxes.....	100
115960	Envelope Stamping Machines , in boxes.....	100
115985	Housings, Cases or Shells , NOI, computer or business machine, or Sections thereof , see Note, item 115987, in boxes, subject to Item 170 and having a density in pounds per cubic foot of:	
Sub 1	Less than 1	400
Sub 2	1 but less than 2	300
Sub 3	2 but less than 4	250
Sub 4	4 but less than 6	175
Sub 5	6 but less than 8	125
Sub 6	8 but less than 10	100
Sub 7	10 but less than 12	92.5
Sub 8	12 but less than 15	85
Sub 9	15 but less than 22.5	70
Sub 10	22.5 but less than 30	65
Sub 11	30 but less than 35	60
Sub 12	35 but less than 50	55
Sub 13	50 or greater	50
115987	NOTE—Applies on housings, cases or shells, or sections thereof, with or without equipment of power supply or cooling fan, for computers, computer monitors, data storage devices, automatic teller machines (ATMs), adding machines, calculators, cash registers, facsimile (fax) machines or other business machines.	

SUBJECT 14

Present Classification Provisions—Continued

Item	Description	Class
	MACHINERY GROUP: subject to item 114000	
	Business or Office: subject to item 115700	
116000	Inserting Machines (Envelope Stuffing Machines) with or without envelope sealing attachment, in boxes or crates	100
116020	Machines, microfilming or microfilm viewing, separate or combined, or Parts, NOI; in boxes, or loose when having value only for reconditioning or salvage	100
116030	Machines, Systems or Devices, data processing, or Components, Parts or Peripherals thereof, see Note, item 116033, viz.: Automated Teller Machines (ATMs); Computers, including Personal Computers, Laptops, Notebooks or Tablets, or Components, Parts or Peripherals thereof, NOI; Copiers, Printers, Scanners or Facsimile (Fax) Machines, or Components or Parts thereof, NOI, see Notes, items 116034 and 116039, also in Package 2534; Electronic Telephone Switching Systems, or Components thereof; Machines, Systems or Devices, data processing, or Components, Parts or Peripherals thereof, NOI; Point-of-Sale (POS) Systems or Cash Registers, or Components or Parts thereof, NOI, see Note, item 116038, also in Package 2132; Servers, or Storage or Networking Devices or Hardware, or Components or Parts thereof, NOI; Software, NOI, data processing machine, system or device; In boxes, crates or Packages 2253, 2254, 2286 or 2291, released to a value not exceeding \$25.00 per pound, see Note, item 116031, subject to Item 170 and having a density in pounds per cubic foot of:	
Sub 1	Less than 1	400
Sub 2	1 but less than 2	300
Sub 3	2 but less than 4	250
Sub 4	4 but less than 6	175
Sub 5	6 but less than 8	125
Sub 6	8 but less than 10	100
Sub 7	10 but less than 12	92.5
Sub 8	12 but less than 15	85
Sub 9	15 but less than 22.5	70
Sub 10	22.5 but less than 30	65
Sub 11	30 but less than 35	60
Sub 12	35 but less than 50	55
Sub 13	50 or greater	50

SUBJECT 14

Present Classification Provisions—Continued

Item	Description	Class
	MACHINERY GROUP: subject to item 114000	
	Business or Office: subject to item 115700	
116031	NOTE—Unless otherwise provided in individual participating carriers' tariffs, articles moving under the provisions of item 116030 shall only be accepted subject to a maximum liability of \$25.00 per pound. If shipper fails to declare a value, or declares a value in excess of \$25.00 per pound, shipment will not be accepted, but if the shipment is inadvertently accepted, it will be considered as being released to a value not exceeding \$25.00 per pound and the shipment will move subject to such limitation of liability. In no instance will carriers' liability exceed the actual value of the article lost or damaged.	
116033	NOTE—Does not apply on: (1) Cellular or radiotelephones, including smartphones. For cellular or radiotelephones, including smartphones, see item 62830. (2) Video, computer or multimedia monitors or displays. For 'Video, Computer or Multimedia Monitors or Displays,' see item 63321.	
116034	NOTE—Also applies on stand-alone copiers, or components or parts thereof, that are not a part of a computer or data processing network or system.	
116038	NOTE—Also applies on stand-alone point-of-sale systems or cash registers, or components or parts thereof, that are not a part of a computer or data processing network or system.	
116039	NOTE—Articles may be shipped with complement of ink, dry ink or toner in same package.	
116040	Mailing Machines , in boxes or crates 150	
116050	Meters , postage, having value for reconditioning or reclamation of raw materials, see Note, item 116051, in boxes or crates 92.5	
116051	NOTE—Applies only when the articles are used, and have value not exceeding the value for reconditioning or salvaging, and only when described at time of shipment on shipping orders and bills of lading as 'used postage meters.' Used postage meters which have been reconditioned or rebuilt in any way will be classified under the provisions of item 115960.	
116060	Numbering or Paging Machines , NOI, in boxes or crates 100	
116120	Postmarking or Stamp Cancelling Machines , in boxes or crates 100	
116170	Presses , seal, in boxes or drums 100	
116190	Registers , autographic sales, in boxes 100	
116210	Stamps , impression or perforation, hand, or Stamp Parts , NOI, in boxes or drums 100	
116230	Ticket Issuing Machines , in boxes 100	
116250	Typewriters, Teletypewriters, or Parts , NOI; in boxes; or not boxed, securely fastened on enclosed wheeled metal racks 100	

SUBJECT 14

Present Classification Provisions—Concluded

Item 172

LIMITATION OF CARRIER LIABILITY WHERE VALUE IS NOT DECLARED BY SHIPPER

Where item 47500, 56165, 63025, 70080, 88160, 99400, 100240, 107830, 116030, 136500, 164900, 168960 or 196420 of this Classification applies, and shipper fails to declare a value as required by those provisions, the shipment will not be accepted, but if the shipment is inadvertently accepted, the carrier's liability shall be limited as follows:

ITEM NO.	DESCRIPTION	VALUE LIMITATION
47500	Ceramicware, China, Earthenware, Porcelain or Stoneware , NOI	\$1.70 per pound
56165	Paintings or Pictures , NOI, framed or unframed, with or without glass	\$25.00 per pound
63025	Semiconductors, viz.: Devices , NOI; Diodes; Rectifiers; Thermistors; Transistors	\$20.00 per pound
70080	Flatware, Dresserware or Holloware , sterling silver; or Flatware, Dresserware or Holloware , with sterling silver parts, such as backs, covers, frames, handles or tops	\$5.00 per pound
88160	Glassware , NOI	\$19.00 per pound
99400	Hides, Pelts or Skins , dressed or tanned or not dressed nor tanned, NOI, dry	\$7.50 per pound
100240	Household Goods, Personal Effects or Military Baggage , other than shipments moving under the U.S. Department of Defense Personal Property Program	\$0.10 per pound
107830	Jewelry , costume or novelty, made of materials other than solid or filled precious metals, not mounted nor set with precious stones	\$5.00 per pound
116030	Machines, Systems or Devices , data processing, or Components, Parts or Peripherals thereof	\$25.00 per pound
136500	Metal , NOI or Metal Alloys , NOI	\$5.00 per pound
164900	Radioactive Materials	\$25.00 per pound
168960	Records, Documents or Files , office	\$0.25 per pound
196420	Watches or Watch Movements	\$10.00 each

Where the provisions of other tariffs apply, and those provisions specify a limitation of the carrier's liability absent a release or value declaration by the shipper, the carrier's liability shall be limited to the extent provided by such applicable provisions when the shipper does not make the requisite or specified release or value declaration.

SUBJECT 14

Proposed Classification Provisions

Item	Description	Class
	MACHINERY GROUP: subject to item 114000	
115700	Business or Office:	⇒Cancel; no further application
115760	Adding Machines or Calculators, NOI, see Note, item 115762, or Parts thereof, NOI, etc	⇒Cancel; see item A-NEW
115762	NOTE—	⇒Cancel; see item B-NEW.
115780	Addressing or Imprinting Machines, etc	⇒Cancel; see item A-NEW
115800	Bookkeeping Machines or Parts, NOI, etc	⇒Cancel; believed to be obsolete
115860	Check Boxes, cash register, etc	⇒Cancel; see item A-NEW
115900	Coin Changers or Holders, metal, NOI, etc	⇒Cancel; see item A-NEW
115910	Doors or Panels, data processing machine, steel, 18 gauge or thicker, with or without handles, louvers or fastening devices, etc	⇒Cancel; see item A-NEW
115920	Embossing Machines, identification tag, including military-style identification tag, used or reconditioned, etc	⇒Cancel; see item A-NEW
115940	Envelope Sealing Machines, or Envelope Sealing and Stamping Machines combined, etc	⇒Cancel; see item A-NEW
115960	Envelope Stamping Machines, etc	⇒Cancel; see item A-NEW
115985	Housings, Cases or Shells, NOI, computer or business machine, or Sections thereof, etc	⇒Cancel; see item A-NEW
115987	NOTE—	⇒Cancel; see item E-NEW.
116000	Inserting Machines (Envelope Stuffing Machines) with or without envelope sealing attachment, etc	⇒Cancel; see item A-NEW
116020	Machines, microfilming or microfilm viewing, separate or combined, or Parts, NOI; etc	⇒Cancel; see item A-NEW

SUBJECT 14

Proposed Classification Provisions—Continued

Item	Description	Class
	MACHINERY GROUP: subject to item 114000	
	Business or Office: subject to item 115700	
116030	Machines, Systems or Devices , data processing, or Components, Parts or Peripherals thereof , see Note, item 116033, viz.: Automated Teller Machines (ATMs); Computers , including Personal Computers, Laptops, Notebooks or Tablets, or Components, Parts or Peripherals thereof , NOI; Copiers, Printers, Scanners or Facsimile (Fax) Machines, or Components or Parts thereof , NOI, see Notes, items 116034 and 116039, also in Package 2534; Electronic Telephone Switching Systems, or Components thereof; Machines, Systems or Devices , data processing, or Components, Parts or Peripherals thereof , NOI; Point-of-Sale (POS) Systems or Cash Registers, or Components or Parts thereof , NOI, see Note, item 116038, also in Package 2132; Servers, or Storage or Networking Devices or Hardware, or Components or Parts thereof , NOI; Software , NOI, data processing machine, system or device, etc.....	⇒Cancel; see item A-NEW
116031	NOTE—⇒Cancel; no further application.	
116033	NOTE—⇒Cancel; see item F-NEW.	
116034	NOTE—⇒Cancel; see item C-NEW.	
116038	NOTE—⇒Cancel; see item G-NEW.	
116039	NOTE—⇒Cancel; see item D-NEW.	
116040	Mailing Machines , etc	⇒Cancel; see item A-NEW
116050	Meters , postage, having value for reconditioning or reclamation of raw materials, etc	⇒Cancel; see item A-NEW
116051	NOTE—⇒Cancel; no further application.	
116060	Numbering or Paging Machines , NOI, etc	⇒Cancel; see item A-NEW
116120	Postmarking or Stamp Cancelling Machines , etc.....	⇒Cancel; see item A-NEW
116170	Presses , seal, etc	⇒Cancel; see item A-NEW
116190	Registers , autographic sales, etc	⇒Cancel; see item A-NEW
116210	Stamps , impression or perforation, hand, or Stamp Parts , NOI, etc	⇒Cancel; see item A-NEW

SUBJECT 14

Proposed Classification Provisions—Continued

Item	Description	Class
	MACHINERY GROUP: subject to item 114000	
	Business or Office: subject to item 115700	
116230	Ticket Issuing Machines, etc	⇒Cancel; see item A-NEW
116250	Typewriters, Teletypewriters, or Parts, NOI; etc	⇒Cancel; see item A-NEW
⇒A-NEW	<p>Business or Office Machines, viz.:</p> <p>Adding Machines or Calculators, NOI, see Note, item B-NEW, or Parts thereof, NOI, in boxes;</p> <p>Addressing or Imprinting Machines, in boxes or crates;</p> <p>Automated Teller Machines (ATMs), in boxes, crates or Packages 2253, 2254, 2286 or 2291;</p> <p>Business or Office Machines, NOI, in boxes or crates;</p> <p>Check Boxes, cash register, in boxes;</p> <p>Coin Changers or Holders, metal, NOI, in boxes;</p> <p>Computers, including Personal Computers, Laptops, Notebooks or Tablets, or Components, Parts or Peripherals thereof, NOI, in boxes, crates or Packages 2253, 2254, 2286 or 2291;</p> <p>Copiers, Printers, Scanners or Facsimile (Fax) Machines, or Components or Parts thereof, NOI, see Notes, items C-NEW and D-NEW, in boxes, crates or Packages 2253, 2254, 2286, 2291 or 2534;</p> <p>Electronic Telephone Switching Systems, or Components thereof, in boxes, crates or Packages 2253, 2254, 2286 or 2291;</p> <p>Embossing Machines, identification tag, including military-style identification tag, used or reconditioned, in boxes or crates;</p> <p>Envelope Sealing Machines, or Envelope Sealing and Stamping Machines combined, in boxes or crates;</p> <p>Envelope Stamping Machines, in boxes;</p> <p>Housings, Cases or Shells, NOI, computer or business machine, or Sections thereof, see Note, item E-NEW, in boxes or crates;</p> <p>Inserting Machines (Envelope Stuffing Machines) with or without envelope sealing attachment, in boxes or crates;</p> <p>Machines, microfilming or microfilm viewing, separate or combined, or Parts, NOI, in boxes or crates;</p> <p>Machines, Systems or Devices, data processing, or Components, Parts or Peripherals thereof, NOI, see Note, item F-NEW, in boxes, crates or Packages 2253, 2254, 2286 or 2291;</p> <p>Mailing Machines, in boxes or crates;</p>	

SUBJECT 14

Proposed Classification Provisions—Continued

Item	Description	Class
	MACHINERY GROUP: subject to item 114000	
	Business or Office Machines, viz.: subject to item A-NEW	
	Meters , postage, having value for reconditioning or reclamation of raw materials, in boxes or crates;	
	Numbering or Paging Machines , NOI, in boxes or crates;	
	Point-of-Sale (POS) Systems or Cash Registers, or Components or Parts thereof , NOI, see Note, item G-NEW, in boxes, crates or Packages 2132, 2253, 2254, 2286 or 2291;	
	Postmarking or Stamp Cancelling Machines , in boxes or crates;	
	Presses , seal, in boxes;	
	Registers , autographic sales, in boxes;	
	Servers, or Storage or Networking Devices or Hardware, or Components or Parts thereof , NOI, in boxes, crates or Packages 2253, 2254, 2286 or 2291;	
	Software , NOI, data processing machine, system or device, in boxes, crates or Packages 2253, 2254, 2286 or 2291;	
	Stamps , impression or perforation, hand, or Stamp Parts , NOI, in boxes;	
	Ticket Issuing Machines , in boxes;	
	Typewriters, Teletypewriters, or Parts , NOI, in boxes;	
	Subject to Item 170 and having a density in pounds per cubic foot of:	
Sub 1	Less than 1	400
Sub 2	1 but less than 2	300
Sub 3	2 but less than 4	250
Sub 4	4 but less than 6	175
Sub 5	6 but less than 8	125
Sub 6	8 but less than 10	100
Sub 7	10 but less than 12	92.5
Sub 8	12 but less than 15	85
Sub 9	15 but less than 22.5	70
Sub 10	22.5 but less than 30	65
Sub 11	30 but less than 35	60
Sub 12	35 but less than 50	55
Sub 13	50 or greater	50
⇒B-NEW	NOTE—Applies only on hand portable or desktop adding machines or calculating machines (calculators).	
⇒C-NEW	NOTE—Also applies on stand-alone copiers, or components or parts thereof, that are not a part of a computer or data processing network or system.	

SUBJECT 14

Proposed Classification Provisions—Continued

Item	Description	Class
	MACHINERY GROUP: subject to item 114000	
⇒D-NEW	NOTE—Articles may be shipped with complement of ink, dry ink or toner in same package.	
⇒E-NEW	NOTE—Applies on cases (other than network server cabinets), housings or shells, or sections thereof, with or without equipment of power supply or cooling fan, for computers, computer monitors, data storage devices, automatic teller machines (ATMs), adding machines, calculators, cash registers, facsimile (fax) machines or other business machines. For provisions applicable on network server cabinets see item 61110.	
⇒F-NEW	NOTE—Does not apply on: (1) Cellular or radiotelephones, including smartphones. For cellular or radiotelephones, including smartphones, see item 62830. (2) Video, computer or multimedia monitors or displays. For 'Video, Computer or Multimedia Monitors or Displays,' see item 63321.	
⇒G-NEW	NOTE—Also applies on stand-alone point-of-sale systems or cash registers, or components or parts thereof, that are not a part of a computer or data processing network or system.	

THIS SPACE INTENTIONALLY LEFT BLANK

SUBJECT 14

Proposed Classification Provisions—Concluded

Item 172

LIMITATION OF CARRIER LIABILITY WHERE VALUE IS NOT DECLARED BY SHIPPER

Where item 47500, 56165, 63025, 70080, 88160, 99400, 100240, 107830, ~~116030~~, 136500, 164900, 168960 or 196420 of this Classification applies, and shipper fails to declare a value as required by those provisions, the shipment will not be accepted, but if the shipment is inadvertently accepted, the carrier's liability shall be limited as follows:

ITEM NO.	DESCRIPTION	VALUE LIMITATION
47500	Ceramicware, China, Earthenware, Porcelain or Stoneware , NOI	\$1.70 per pound
56165	Paintings or Pictures , NOI, framed or unframed, with or without glass	\$25.00 per pound
63025	Semiconductors, viz.: Devices , NOI; Diodes; Rectifiers; Thermistors; Transistors	\$20.00 per pound
70080	Flatware, Dresserware or Holloware , sterling silver; or Flatware, Dresserware or Holloware , with sterling silver parts, such as backs, covers, frames, handles or tops	\$5.00 per pound
88160	Glassware , NOI	\$19.00 per pound
99400	Hides, Pelts or Skins , dressed or tanned or not dressed nor tanned, NOI, dry	\$7.50 per pound
100240	Household Goods, Personal Effects or Military Baggage , other than shipments moving under the U.S. Department of Defense Personal Property Program	\$0.10 per pound
107830	Jewelry , costume or novelty, made of materials other than solid or filled precious metals, not mounted nor set with precious stones	\$5.00 per pound
116030	Machines, Systems or Devices, data processing, or Components, Parts or Peripherals thereof	\$25.00 per pound
136500	Metal , NOI or Metal Alloys , NOI	\$5.00 per pound
164900	Radioactive Materials	\$25.00 per pound
168960	Records, Documents or Files , office	\$0.25 per pound
196420	Watches or Watch Movements	\$10.00 each

Where the provisions of other tariffs apply, and those provisions specify a limitation of the carrier's liability absent a release or value declaration by the shipper, the carrier's liability shall be limited to the extent provided by such applicable provisions when the shipper does not make the requisite or specified release or value declaration.

SUBJECT 14

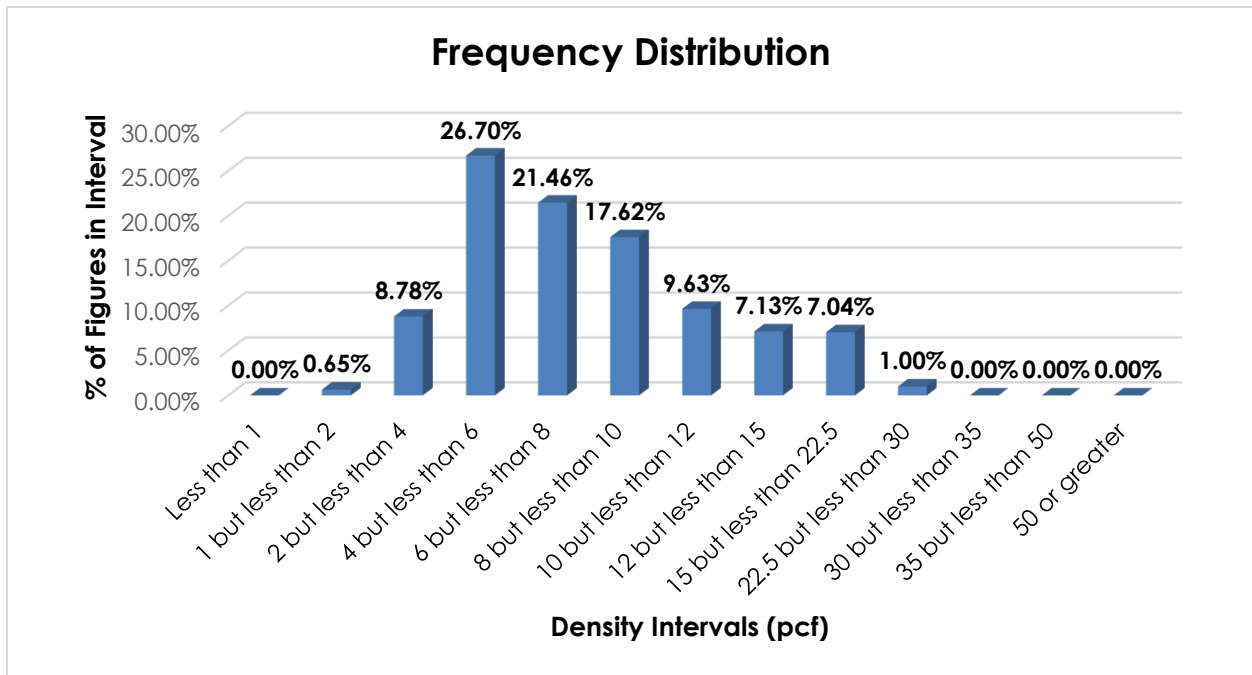
Analysis

Introduction

Twenty-one items, as shown in the Present Classification Provisions herein, name various machines used in business or office settings, and these provisions can be difficult to interpret, apply or verify. The transportation characteristics below relate to these items, as shown in the Present Classification Provisions herein.

Transportation Characteristics

Density—The information of record includes 9,218 density observations obtained from the FCDC’s Density Study¹. The densities range from 1.53 to 25.75 pcf, with an overall average density of 8.21 pcf. As shown in the graph below, the density distribution is right-skewed, with a peak in the 4 but less than 6 pcf interval.



Handling, Stowability, and Liability—There have been no reports of unusual or significant handling, stowability, or liability issues.

¹ The Density Study is part of an ongoing effort by the FCDC to collect information on actual shipments across all product categories handled by the LTL industry. Carriers that choose to participate in the Study periodically submit shipment data captured through their respective freight auditing programs. The FCDC uses verifiable data points, identified by NMFC item, that include the weight and the dimensions and/or cube of the shipping unit.

SUBJECT 14**Conclusion**

Based on the foregoing analysis, twenty-one items subject to the Machinery Group's Business or Office subgeneric heading, would be canceled with reference to a new item, naming "Business or Office Machines," with a "viz." format, and classes predicated on the FCDC's 13-subprovision density scale². Item 115800, naming "Bookkeeping Machines or Parts," would be canceled as obsolete. Subgeneric heading, item 115700, would be canceled with no further application.

Additionally, six Notes would be canceled and reestablished attendant to the new item, while Notes, items 116031 and 116051 would be canceled with no further application.

The FCDC's Packaging Development Manager has reviewed the proposed minimum packaging requirements and determined they are appropriate for the LTL environment.

Concurrently, Item (Rule) 172 would be amended to remove reference to item 116030.

² The new item would provide the FCDC's 13-subprovision density scale, which includes reference to Item (Rule) 170, the inadvertence clause.