

## SUBJECT 11

**SUBJECT 11: Foundry Flasks, or Parts thereof****Re: Foundry Flasks, or Parts thereof****Contact:** Adam Mercer

FCDC@nmfta.org

**Proponent:** Freight Classification Development Council**Quick View**

*The Quick View feature is not intended to replace contextual information within this document. To understand the potential impact of the recommended changes shown here, please read the full proposal.*

**Subject 11: Foundry Flasks, or Parts thereof**

**Quick View:** Various items applying on foundry flasks and foundry flask parts are canceled with reference to a new item and item 69100.

- Items 76220, 76240, 76260, and 76300 canceled with reference to the new item
- Item 76360 canceled with reference to item 69100

**Transportation Characteristics Present:**

- Handling Yes No   Stowability Yes No   Liability Yes No   Density Yes No

**Provisions based on:**

- FCDC's 13-sub density scale

SUBJECT 11

Present Classification Provisions

Item	Description	Class
	<b>FILTERS GROUP:</b> subject to item 69010	
69100	<b>Filters, viz.:</b> <b>Filters</b> , NOI, in boxes or crates; [Other Articles Listed—Not Involved.] Subject to Item 170 and having a density in pounds per cubic foot of:	
Sub 1	Less than 1 .....	400
Sub 2	1 but less than 2 .....	300
Sub 3	2 but less than 4 .....	250
Sub 4	4 but less than 6 .....	175
Sub 5	6 but less than 8 .....	125
Sub 6	8 but less than 10 .....	100
Sub 7	10 but less than 12 .....	92.5
Sub 8	12 but less than 15 .....	85
Sub 9	15 but less than 22.5 .....	70
Sub 10	22.5 but less than 30 .....	65
Sub 11	30 but less than 35 .....	60
Sub 12	35 but less than 50 .....	55
Sub 13	50 or greater .....	50
69101	NOTE—Not Involved.	
69102	NOTE—Not Involved.	
69103	NOTE—Not Involved.	
76200	<b>FOUNDRY FLASKS, OR PARTS NAMED:</b>	
76220	<b>Boards</b> , follow or moulding, <b>Copes, Nowels or Plates</b> , flask bottom or core .....	70
76240	<b>Flasks</b> , iron or wood, separate or combined .....	70
76260	<b>Flasks</b> , magnesium alloy and iron or steel combined, in boxes or crates .....	100
76300	<b>Nowel Pins</b> , in boxes .....	70
76360	<b>Foundry Strainer Cores</b> , sand, clay and talc combined, in boxes .....	60

THIS SPACE INTENTIONALLY LEFT BLANK

SUBJECT 11

**Proposed Classification Provisions**

Item	Description	Class
	<b>FILTERS GROUP:</b> subject to item 69010	
69100	<b>Filters, viz.:</b> <b>Filters</b> , NOI, in boxes or crates; [Other Articles Listed—No Change.] Subject to Item 170 and having a density in pounds per cubic foot of:	
Sub 1	Less than 1 .....	400
Sub 2	1 but less than 2 .....	300
Sub 3	2 but less than 4 .....	250
Sub 4	4 but less than 6 .....	175
Sub 5	6 but less than 8 .....	125
Sub 6	8 but less than 10 .....	100
Sub 7	10 but less than 12 .....	92.5
Sub 8	12 but less than 15 .....	85
Sub 9	15 but less than 22.5 .....	70
Sub 10	22.5 but less than 30 .....	65
Sub 11	30 but less than 35 .....	60
Sub 12	35 but less than 50 .....	55
Sub 13	50 or greater .....	50
69101	NOTE—No Change.	
69102	NOTE—No Change.	
69103	NOTE—No Change.	
76200	<b>FOUNDRY FLASKS, OR PARTS NAMED:</b> .....	⇒Cancel; no further application
76220	<b>Boards</b> , follow or moulding, <b>Copes, Nowels or Plates</b> , flask bottom or core .....	⇒Cancel; see item NEW
76240	<b>Flasks</b> , iron or wood, separate or combined .....	⇒Cancel; see item NEW
76260	<b>Flasks</b> , magnesium alloy and iron or steel combined, etc.....	⇒Cancel; see item NEW
76300	<b>Nowel Pins</b> , etc.....	⇒Cancel; see item NEW
76360	<b>Foundry Strainer Cores</b> , sand, clay and talc combined, etc .....	⇒Cancel; see item 69100

SUBJECT 11

**Proposed Classification Provisions—Concluded**

Item	Description	Class
⇒NEW	<b>Foundry Flasks, or Parts thereof</b> , in boxes or crates, subject to Item 170 and having a density in pounds per cubic foot of:	
Sub 1	Less than 1.....	400
Sub 2	1 but less than 2.....	300
Sub 3	2 but less than 4.....	250
Sub 4	4 but less than 6.....	175
Sub 5	6 but less than 8.....	125
Sub 6	8 but less than 10.....	100
Sub 7	10 but less than 12.....	92.5
Sub 8	12 but less than 15.....	85
Sub 9	15 but less than 22.5.....	70
Sub 10	22.5 but less than 30.....	65
Sub 11	30 but less than 35.....	60
Sub 12	35 but less than 50.....	55
Sub 13	50 or greater.....	50

Analysis

**Introduction**

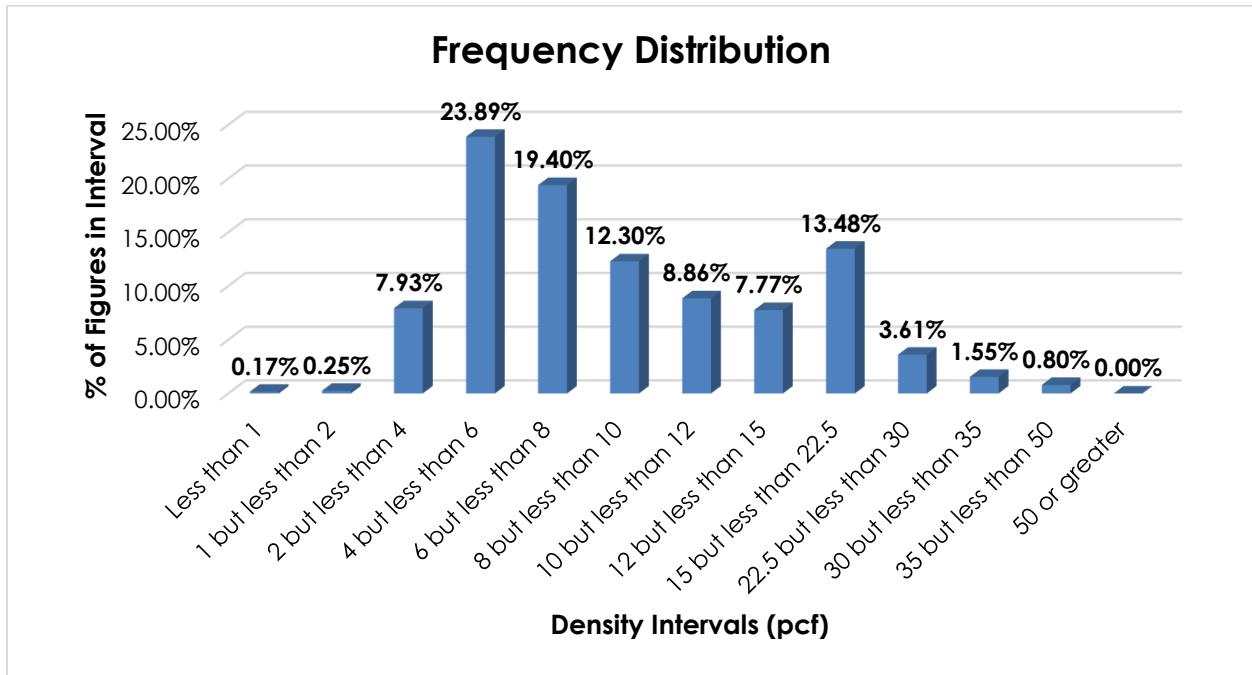
Items 76220, 76240, 76260, 76300, and 76360 name foundry flasks and particular parts of foundry flasks. These provisions can be difficult to interpret, apply, or verify. The transportation characteristics below relate to foundry flasks and their various parts, as shown in the Present Classification Provisions herein.

**Transportation Characteristics**

**Density**—The information of record includes 2,382 density observations obtained from the FCDC’s Density Study<sup>1</sup>. The densities range from 0.57 to 39.07 pcf, with an overall average density of 10.09 pcf. As shown in the graph on the following page, the densities are distributed throughout the range, with two distinct peaks at the 4 but less than 6 pcf and 15 but less than 22.5 pcf intervals.

<sup>1</sup> The Density Study is part of an ongoing effort by the FCDC to collect information on actual shipments across all product categories handled by the LTL industry. Carriers that choose to participate in the Study periodically submit shipment data captured through their respective freight auditing programs. The FCDC uses verifiable data points, identified by NMFC item, that include the weight and the dimensions and/or cube of the shipping unit.

SUBJECT 11



**Handling, Stowability, and Liability**—There have been no reports of unusual or significant handling, stowability, or liability issues.

**Conclusion**

Based on the foregoing analysis, items 76220, 76240, 76260, and 76300, as shown in the Proposed Classification Provisions herein, would be canceled with reference to a new item, naming “Foundry Flasks, or Parts thereof,” which would provide the FCDC’s 13-subprovision density scale<sup>2</sup>. Additionally, the Foundry Flasks, or Parts named generic heading, item 76200, would be canceled with no further application.

Concurrently, item 76360 would be canceled with reference to full-scale, density-based provisions of item 69100<sup>3</sup>.

The FCDC’s Packaging Development Manager has reviewed the proposed minimum packaging requirements and determined they are appropriate for the LTL environment.

<sup>2</sup> The FCDC’s standard 13-subprovision density scale includes reference to Item (Rule) 170, the inadvertence clause.

<sup>3</sup> Item 69100 provides the FCDC’s standard 13-subprovision density scale, which includes reference to Item (Rule) 170, the inadvertence clause.