

SUBJECT 8

SUBJECT 8: Glassware

Re: Glassware

Contact: Lanae Peterson

FCDC@nmfta.org

Proponent: Freight Classification Development Council

Quick View

The Quick View feature is not intended to replace contextual information within this document. To understand the potential impact of the recommended changes shown here, please read the full proposal.

Subject 8: Glassware

Quick View: Fifteen items related to glassware are canceled with reference to a new item, which would provide a “viz.” format, and classes based on a modified density scale.

- Nine Notes canceled with no further application
- Item 87650 canceled as obsolete
- Package 213 canceled with no further application
- Item (Rule) 172 amended

Transportation Characteristics Present:

- Handling Yes No Stowability Yes No Liability Yes No Density Yes No

Provisions based on:

- Modified density scale with class adjustments

SUBJECT 8

Present Classification Provisions

Item	Description	Class
	GLASSWARE GROUP: subject to item 87500	
87520	Ampoules (Ampuls) , in boxes or Package 2362	100
87650	Battery Jars , with or without one hydrometer syringe in each separate shipping package, in boxes or crates	70
87810	Bulbs or Tubes, NOI, or Bulb or Tube Subassemblies , see Note, item 87811; or Pipe, Rods or Tubing , straight, NOI, see Note, item 87812; in boxes or crates, see Note, item 87813:	
Sub 1	Density less than 10 pounds per cubic foot; or actual value exceeding \$40.00 per pound; or where no density or value is shown at time of shipment.....	175
Sub 2	Density 10 pounds or greater per cubic foot and actual value not exceeding \$40.00 per pound, see Note, item 87814	70
87811	NOTE—Provisions apply only when not containing filaments or gases and without fittings, except they may have metal contact buttons or metal or plastic rings or gaskets.	
87812	NOTE—Products containing 90 percent or more of silica or quartz, or having fittings or pieces attached are subject to the provisions for 'Glassware, NOI,' per item 88160.	
87813	NOTE—Straight lengths of glass pipe, rods or tubing may be shipped in Packages 1440, 2028 or 2066.	
87814	NOTE—Bills of lading and shipping orders must clearly show that the density is 10 pounds or greater per cubic foot and that the value per pound does not exceed \$40.00.	
87960	Cover Shades , other than cut, such as used to protect clocks, decorations or ornaments, in boxes.....	200
88070	Glass-ceramic Ware , see Note, item 88074; or Laminated Glassware , cooking or serving; see Notes, items 88072 and 88076, in boxes or Package 213:	
Sub 1	Released value not exceeding 90 cents per pound	70
Sub 2	Released value exceeding 90 cents but not exceeding \$3.80 per pound	85
Sub 3	Released value exceeding \$3.80 but not exceeding \$5.00 per pound...	100
Sub 4	Released value exceeding \$5.00 but not exceeding \$9.50 per pound...	150
Sub 5	Released value exceeding \$9.50 but not exceeding \$12.65 per pound.	200
88072	NOTE—The released value must be entered on the shipping order and bill of lading in the following form: <i>"The agreed or declared value of the property is hereby specifically stated by the shipper to be not exceeding _____ per pound."</i> (Classes herein based on released values have been authorized by the Interstate Commerce Commission in Released Rates Order No. MC-545 of August 29, 1963 and amended May 15, 1964; February 13, 1973; April 17, 1980; and March 17, 1982.)	

SUBJECT 8

Present Classification Provisions—Continued

Item	Description	Class
88074	NOTE—Applies on articles of cooking or table serving utensils (except straight shipments of such articles equipped with electrical heating units) or dishes made of a ceramic that consists of glass that has been converted into crystalline ceramics by the use of nucleating agents, heat treatment and kiln ceraming. The resulting material is a glass derivative opaque ceramic characterized by greater strength and hardness than the parent glass and has greater abrasion resistance.	
88076	NOTE—Released classes will also apply on glass-ceramic ware or laminated glassware equipped with candles, covers, handles, metal or plastic fixtures, serving baskets or table type holders or stands not in excess of number required to equip each retail unit of sale. Glass-ceramic ware or laminated glassware equipped with electric heating units may be included in the shipment at the classes applicable to glass-ceramic ware or laminated glassware but not in excess of 25 percent of the total weight of shipment on which charges are assessed.	
88100	Glasses , gauge, solid glass, not bent nor curved, in boxes	100
88120	Glassware , laboratory, including Beakers, Bulbs, Evaporators, Pipettes, NOI, Test Tubes or Worms , in boxes.....	100
88160	Glassware , NOI, with or without components or trim of other materials, in boxes or Package 213, released to a value not exceeding \$19.00 per pound, see Note, item 88161, subject to Item 170 and having a density in pounds per cubic foot of:	
Sub 1	Less than 1.....	400
Sub 2	1 but less than 2.....	300
Sub 3	2 but less than 4.....	250
Sub 4	4 but less than 6.....	175
Sub 5	6 but less than 8.....	125
Sub 6	8 but less than 10.....	100
Sub 7	10 but less than 12.....	92.5
Sub 8	12 but less than 15.....	85
Sub 9	15 but less than 22.5.....	70
Sub 10	22.5 but less than 30.....	65
Sub 11	30 but less than 35.....	60
Sub 12	35 but less than 50.....	55
Sub 13	50 or greater	50
88161	NOTE—Unless otherwise provided in individual participating carriers' tariffs, glassware moving under the provisions of item 88160 shall only be accepted subject to a maximum liability of \$19.00 per pound. If shipper fails to declare a value, or declares a value in excess of \$19.00 per pound, shipment will not be accepted, but if the shipment is inadvertently accepted, it will be considered as being released to a value not exceeding \$19.00 per pound and the shipment will move subject to such limitation of liability. In no instance will carriers' liability exceed the actual value of the glassware lost or damaged.	

SUBJECT 8

Present Classification Provisions—Continued

Item	Description	Class
88400	Pipe Fittings , NOI, in boxes	100
88410	Pipettes , capillary, without graduations, expendable, in boxes	70
88420	Plates , face or implosion, television or television tube, in boxes or crates	60
88440	Protectors , incandescent electric lamp (bulb), see Note, item 88442, in boxes	70
88442	NOTE—Applies only on vaporproof glass protectors, each of which, when used, closely and completely encloses a single incandescent electric lamp (bulb).	
88460	Reflectors , NOI, in boxes.....	100
88525	Shells or Bodies , screw-type electrical fuse plug, glass, in boxes	77.5
88530	Shelves, Shelving or Dividers , not bent nor curved, cabinet or counter, in boxes	65
88560	Thread Guide Rods , in boxes	85

Package 213

In solid fiberboard cartons complying with Item 222, except manufacturer's joint may be constructed by lapping sides of box one inch and firmly gluing 50 percent of area of contact the entire length of the joint. Not more than four cartons must be placed within a corrugated fiberboard four-sided sleeve testing 200 pounds. Cartons and sleeve must be shrink wrapped with polyethylene film of not less than 2.5 mils. Gross weight must not exceed 20 pounds.

THIS SPACE INTENTIONALLY LEFT BLANK

SUBJECT 8

Present Classification Provisions—Concluded

Item 172

LIMITATION OF CARRIER LIABILITY WHERE VALUE IS NOT DECLARED BY SHIPPER

Where item 47500, 56165, 63025, 70080, 88160, 99400, 100240, 107830, 116030, 136500, 164900, 168960 or 196420 of this Classification applies, and shipper fails to declare a value as required by those provisions, the shipment will not be accepted, but if the shipment is inadvertently accepted, the carrier's liability shall be limited as follows:

ITEM NO.	DESCRIPTION	VALUE LIMITATION
47500	Ceramicware, China, Earthenware, Porcelain or Stoneware , NOI	\$1.70 per pound
56165	Paintings or Pictures , NOI, framed or unframed, with or without glass	\$25.00 per pound
63025	Semiconductors, viz.: Devices , NOI; Diodes; Rectifiers; Thermistors; Transistors	\$20.00 per pound
70080	Flatware, Dresserware or Holloware , sterling silver; or Flatware, Dresserware or Holloware , with sterling silver parts, such as backs, covers, frames, handles or tops	\$5.00 per pound
88160	Glassware , NOI	\$19.00 per pound
99400	Hides, Pelts or Skins , dressed or tanned or not dressed nor tanned, NOI, dry	\$7.50 per pound
100240	Household Goods, Personal Effects or Military Baggage , other than shipments moving under the U.S. Department of Defense Personal Property Program	\$0.10 per pound
107830	Jewelry , costume or novelty, made of materials other than solid or filled precious metals, not mounted nor set with precious stones	\$5.00 per pound
116030	Machines, Systems or Devices , data processing, or Components, Parts or Peripherals thereof	\$25.00 per pound
136500	Metal , NOI or Metal Alloys , NOI	\$5.00 per pound
164900	Radioactive Materials	\$25.00 per pound
168960	Records, Documents or Files , office	\$0.25 per pound
196420	Watches or Watch Movements	\$10.00 each

Where the provisions of other tariffs apply, and those provisions specify a limitation of the carrier's liability absent a release or value declaration by the shipper, the carrier's liability shall be limited to the extent provided by such applicable provisions when the shipper does not make the requisite or specified release or value declaration.

SUBJECT 8

Proposed Classification Provisions

Item	Description	Class
	GLASSWARE GROUP: subject to item 87500	
87520	Ampoules (Ampuls), etc ⇒Cancel; see item A-NEW	
87650	Battery Jars, with or without one hydrometer syringe in each separate shipping package, etc ⇒Cancel; believed to be obsolete	
87810	Bulbs or Tubes, NOI, or Bulb or Tube Subassemblies, see Note, item 87811; or Pipe, Rods or Tubing, straight, NOI, etc..... ⇒Cancel; see item A-NEW	
87811	NOTE—⇒Cancel; no further application.	
87812	NOTE—⇒Cancel; no further application.	
87813	NOTE—⇒Cancel; no further application.	
87814	NOTE—⇒Cancel; no further application.	
87960	Cover Shades, other than cut, such as used to protect clocks, decorations or ornaments, etc ⇒Cancel; see item A-NEW	
88070	Glass-ceramic Ware, see Note, item 88074; or Laminated Glassware, cooking or serving; etc ⇒Cancel; see item A-NEW	
88072	NOTE—⇒Cancel; no further application.	
88074	NOTE—⇒Cancel; no further application.	
88076	NOTE—⇒Cancel; no further application.	
88100	Glasses, gauge, solid glass, not bent nor curved, etc ⇒Cancel; see item A-NEW	
88120	Glassware, laboratory, including Beakers, Bulbs, Evaporators, Pipettes, NOI, Test Tubes or Worms, etc ⇒Cancel; see item A-NEW	
88160	Glassware, NOI, with or without components or trim of other materials, etc ⇒Cancel; see item A-NEW	
88161	NOTE—⇒Cancel; no further application.	
88400	Pipe Fittings, NOI, etc ⇒Cancel; see item A-NEW	
88410	Pipettes, capillary, without graduations, expendable, etc ⇒Cancel; see item A-NEW	
88420	Plates, face or implosion, television or television tube, etc ⇒Cancel; see item A-NEW	
88440	Protectors, incandescent electric lamp (bulb), etc ⇒Cancel; see item A-NEW	
88442	NOTE—⇒Cancel; no further application.	
88460	Reflectors, NOI, etc ⇒Cancel; see item A-NEW	

SUBJECT 8

Proposed Classification Provisions—Continued

Item	Description	Class												
88525	Shells or Bodies , screw-type electrical fuse plug, glass, etc	⇒Cancel; see item A-NEW												
88530	Shelves, Shelving or Dividers , not bent nor curved, cabinet or counter, etc	⇒Cancel; see item A-NEW												
88560	Thread Guide Rods , etc.....	⇒Cancel; see item A-NEW												
⇒A-NEW	<p>👉 Glassware, see Note, item B-NEW, viz.:</p> <p>Ampoules (Ampuls), in boxes or Package 2362;</p> <p>Bulbs or Tubes, NOI, or Bulb or Tube Subassemblies, or Pipe, Rods or Tubing, straight, NOI, in boxes;</p> <p>Cover Shades, other than cut, such as used to protect clocks, decorations or ornaments, in boxes</p> <p>Glass-ceramic Ware, or Laminated Glassware, cooking or serving, in boxes;</p> <p>Glasses, gauge, solid glass, not bent nor curved, in boxes;</p> <p>Glassware, laboratory, including Beakers, Bulbs, Evaporators, Pipettes, NOI, Test Tubes or Worms, in boxes;</p> <p>Glassware, NOI, with or without components or trim of other materials, in boxes;</p> <p>Pipe Fittings, NOI, in boxes;</p> <p>Reflectors, NOI, in boxes;</p> <p>Shells or Bodies, screw-type electrical fuse plug, glass, in boxes;</p> <p>Shelves, Shelving or Dividers, not bent nor curved, cabinet or counter, in boxes;</p> <p>Thread Guide Rods, in boxes;</p> <p style="padding-left: 20px;">Subject to Item 170 and having a density in pounds per cubic foot of:</p> <table border="0" style="width: 100%;"> <tr> <td style="width: 10%;">Sub 1</td> <td style="width: 80%;">Less than 6</td> <td style="width: 10%; text-align: right;">250</td> </tr> <tr> <td>Sub 2</td> <td>6 but less than 10</td> <td style="text-align: right;">150</td> </tr> <tr> <td>Sub 3</td> <td>10 but less than 15</td> <td style="text-align: right;">92.5</td> </tr> <tr> <td>Sub 4</td> <td>15 or greater</td> <td style="text-align: right;">70</td> </tr> </table>	Sub 1	Less than 6	250	Sub 2	6 but less than 10	150	Sub 3	10 but less than 15	92.5	Sub 4	15 or greater	70	
Sub 1	Less than 6	250												
Sub 2	6 but less than 10	150												
Sub 3	10 but less than 15	92.5												
Sub 4	15 or greater	70												
⇒B-NEW	NOTE—Articles must be protected by interior packing forms or packaging materials necessary to afford adequate protection against damage.													

Package 213

⇒Cancel; no further application.

SUBJECT 8

Proposed Classification Provisions—Concluded

Item 172

LIMITATION OF CARRIER LIABILITY WHERE VALUE IS NOT DECLARED BY SHIPPER

Where item 47500, 56165, 63025, 70080, ~~88160~~, 99400, 100240, 107830, 116030, 136500, 164900, 168960 or 196420 of this Classification applies, and shipper fails to declare a value as required by those provisions, the shipment will not be accepted, but if the shipment is inadvertently accepted, the carrier's liability shall be limited as follows:

ITEM NO.	DESCRIPTION	VALUE LIMITATION
47500	Ceramicware, China, Earthenware, Porcelain or Stoneware , NOI	\$1.70 per pound
56165	Paintings or Pictures , NOI, framed or unframed, with or without glass	\$25.00 per pound
63025	Semiconductors, viz.: Devices , NOI; Diodes; Rectifiers; Thermistors; Transistors	\$20.00 per pound
70080	Flatware, Dresserware or Holloware , sterling silver; or Flatware, Dresserware or Holloware , with sterling silver parts, such as backs, covers, frames, handles or tops	\$5.00 per pound
88160	Glassware , NOI	\$19.00 per pound
99400	Hides, Pelts or Skins , dressed or tanned or not dressed nor tanned, NOI, dry	\$7.50 per pound
100240	Household Goods, Personal Effects or Military Baggage , other than shipments moving under the U.S. Department of Defense Personal Property Program	\$0.10 per pound
107830	Jewelry , costume or novelty, made of materials other than solid or filled precious metals, not mounted nor set with precious stones	\$5.00 per pound
116030	Machines, Systems or Devices , data processing, or Components, Parts or Peripherals thereof	\$25.00 per pound
136500	Metal , NOI or Metal Alloys , NOI	\$5.00 per pound
164900	Radioactive Materials	\$25.00 per pound
168960	Records, Documents or Files , office	\$0.25 per pound
196420	Watches or Watch Movements	\$10.00 each

Where the provisions of other tariffs apply, and those provisions specify a limitation of the carrier's liability absent a release or value declaration by the shipper, the carrier's liability shall be limited to the extent provided by such applicable provisions when the shipper does not make the requisite or specified release or value declaration.

SUBJECT 8

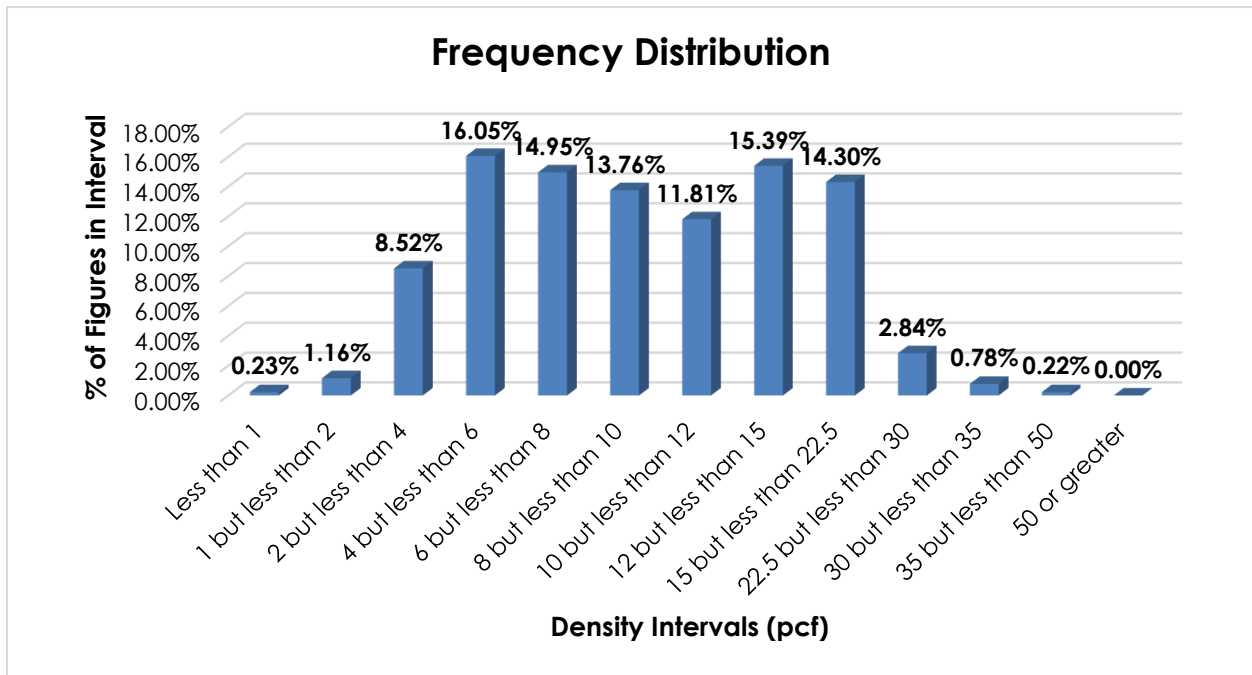
Analysis

Introduction

Numerous items in the Glassware Group name particular types of glass articles, and these provisions can be difficult to interpret, apply or verify. These items were reviewed with the intent of removing value-based provisions, combining like commodities, and examining the involved products' transportation characteristics.

Transportation Characteristics

Density—The information of record includes 44,891 density observations obtained from the FCDC's Density Study¹. The densities range from 0.48 to 37.27 pcf, with an overall average density of 10.33 pcf. As shown in the graph below, the density distribution is relatively uniform between the 2 but less than 4 pcf and 15 but less than 22.5 pcf intervals.



¹ The Density Study is part of an ongoing effort by the FCDC to collect information on actual shipments across all product categories handled by the LTL industry. Carriers that choose to participate in the Study periodically submit shipment data captured through their respective freight auditing programs. The FCDC uses verifiable data points, identified by NMFC item, that include the weight and the dimensions and/or cube of the shipping unit.

SUBJECT 8

When the data is evaluated based on the proposed density breaks at 6, 10, and 15 pcf, the density ranges and averages shown in the table below emerge.

Density Groups (pcf)	Density Range (pcf)	Average Density (pcf)
Less than 6	0.48 – 5.99	4.23
6 but less than 10	6.00 – 9.99	7.94
10 but less than 15	10.00 – 14.99	12.36
15 or greater	15.00 – 37.27	19.80

Handling—Glassware is generally tendered in boxes, which may or may not be secured on lift truck skids or pallets. Due to the inherent fragility of these products, extra care and attention in handling is necessary if damage is to be avoided. The information of record indicates that handling units may depict precautionary markings or shipper instructions, such as “Fragile” or “Handle With Care.”

Stowability—Due to the fragile nature of the articles, carriers must ensure that only compatible freight is stowed adjacent to or on top of handling units of glassware, which increases the time and effort required by the carrier.

Liability—The involved products are not perishable, hazardous in nature, nor likely to damage other freight. Shipments of these commodities are inherently fragile and highly susceptible to damage.

Conclusion

Based on the foregoing analysis, this proposal would cancel fifteen items with reference to a new item, naming “Glassware,” with a “viz.” format, and classes predicated on density, with breaks at 6, 10, and 15 pcf², would be established. Due to the identified negative handling, stowability, and liability issues, a one-class adjustment is proposed, as shown in the table below.

Density Groups (pcf)	Average Density (pcf)	FCDC Minimum Average Density Guideline (pcf)	Class based on FCDC Density Guidelines	Class Adjustment Based on Handling, Stowing, and Liability Considerations
Less than 6	4.23	4	200	250
6 but less than 10	7.94	7	125	150
10 but less than 15	12.36	12	85	92.5
15 or greater	19.80	15	70	77.5

Item 87650 would be canceled as obsolete, and nine Notes would be canceled with no further application.

The FCDC's Packaging Development Manager has reviewed the proposed minimum packaging requirements and determined they are appropriate for the LTL environment. Accordingly, Package 213 would be canceled with no further application.

² The density provisions would include reference to Item (Rule) 170, the inadvertence clause.

SUBJECT 8

Item (Rule) 172 would be amended to remove reference to item 56165.