

SUBJECT 18

SUBJECT 18: Flatware, Dresserware or Holloware – Item 70080

Re: Flatware, Dresserware or Holloware – Item 70080

Contact: Lanae Peterson

FCDC@nmfta.org

Proponent: Freight Classification Development Council

Quick View

The Quick View feature is not intended to replace contextual information within this document. To understand the potential impact of the recommended changes shown here, please read the full proposal.

Subject 18: Flatware, Dresserware or Holloware – Item 70080

**Quick View:** Item 70080 is canceled with reference to item 101025, which provides a “viz.” format, and classes based on the FCDC’s 13-sub density scale.

- Note, item 70082 canceled with no further application
- Item (Rule) 172 amended

**Transportation Characteristics Present:**

- Handling ☐Yes ☒No    Stowability ☐Yes ☒No    Liability ☐Yes ☒No    Density ☒Yes ☐No

**Provisions based on:**

- FCDC’s 13-sub density scale

SUBJECT 18

Present Classification Provisions

Item	Description	Class
70080	<b>Flatware, Dresserware or Holloware</b> , sterling silver; or <b>Flatware, Dresserware or Holloware</b> , with sterling silver parts, such as backs, covers, frames, handles or tops; in boxes, see Note, item 70082:	
Sub 1	Released value not exceeding \$1.00 per pound .....	100
Sub 2	Released value exceeding \$1.00 per pound, but not exceeding \$5.00 per pound .....	200
70082	NOTE—The released value must be entered on the shipping order and bill of lading in the following form: “The agreed or declared value of the property is hereby specifically stated by the shipper to be not exceeding _____ per pound.” If the shipper fails or declines to execute the above statement or designates a value exceeding \$20.00 per pound, shipment will not be accepted, but if shipment is inadvertently accepted, charges initially will be assessed on the basis of the class for the highest value provided. Upon proof of lower actual value, the freight charges will be adjusted to those that would apply if the shipment had been released to the amount of its actual value. (Classes herein based on released value have been authorized by the Interstate Commerce Commission in Released Rates Order No. MC-529 of March 21, 1963, as amended May 15, 1964 and March 31, 1980.)	

## SUBJECT 18

Present Classification Provisions—Continued

Item	Description	Class
101025	<b>Household Utensils or Related Articles, viz.:</b> <b>Dusters</b> , NOI, in boxes; <b>Tools</b> , hand, kitchen, other than power, <b>viz.:</b> <b>Bottle Cappers</b> , in boxes; <b>Bottle or Can Openers</b> , NOI, in boxes; <b>Forks, Knives, Knife Blades or Spoons</b> , see Notes, items 101026, 101027 and 101028, in boxes; <b>Nutcrackers and Nutpicks</b> , NOI, in boxes; <b>Potato Mashers</b> , NOI, in boxes; <b>Squeezers or Extractors (Hand Juicers)</b> , NOI, in boxes; <b>Tools</b> , hand, kitchen, other than power, NOI, in boxes; [Other Articles Listed—Not Involved.] Subject to Item 170 and having a density in pounds per cubic foot of:	
Sub 1	Less than 1 .....	400
Sub 2	1 but less than 2 .....	300
Sub 3	2 but less than 4 .....	250
Sub 4	4 but less than 6 .....	175
Sub 5	6 but less than 8 .....	125
Sub 6	8 but less than 10 .....	100
Sub 7	10 but less than 12 .....	92.5
Sub 8	12 but less than 15 .....	85
Sub 9	15 but less than 22.5 .....	70
Sub 10	22.5 but less than 30 .....	65
Sub 11	30 but less than 35 .....	60
Sub 12	35 but less than 50 .....	55
Sub 13	50 or greater .....	50
101026	NOTE—Does not apply on forks, knives, knife blades or spoons, made of gold or other precious metal (other than sterling silver), or with parts of gold or other precious metal (other than sterling silver), such as backs or handles, but not including small silver ornaments. For applicable provisions, see item 101040.	
101027	NOTE—Articles may be shipped with complement of trays or chests in same package.	
101028	NOTE—Does not apply on plastic dinnerware or tableware. For applicable provisions, see item 156600.	

## SUBJECT 18

Present Classification Provisions—Concluded

## Item 172

**LIMITATION OF CARRIER LIABILITY WHERE VALUE IS NOT DECLARED BY SHIPPER**

Where item 47500, 56165, 63025, 70080, 88160, 99400, 100240, 107830, 116030, 136500, 164900, 168960 or 196420 of this Classification applies, and shipper fails to declare a value as required by those provisions, the shipment will not be accepted, but if the shipment is inadvertently accepted, the carrier's liability shall be limited as follows:

ITEM NO.	DESCRIPTION	VALUE LIMITATION
47500	<b>Ceramicware, China, Earthenware, Porcelain or Stoneware</b> , NOI	\$1.70 per pound
56165	<b>Paintings or Pictures</b> , NOI, framed or unframed, with or without glass	\$25.00 per pound
63025	<b>Semiconductors, viz.: Devices</b> , NOI; <b>Diodes; Rectifiers; Thermistors; Transistors</b>	\$20.00 per pound
70080	<b>Flatware, Dresserware or Holloware</b> , sterling silver; or <b>Flatware, Dresserware or Holloware</b> , with sterling silver parts, such as backs, covers, frames, handles or tops	\$5.00 per pound
88160	<b>Glassware</b> , NOI	\$19.00 per pound
99400	<b>Hides, Pelts or Skins</b> , dressed or tanned or not dressed nor tanned, NOI, dry	\$7.50 per pound
100240	<b>Household Goods, Personal Effects or Military Baggage</b> , other than shipments moving under the U.S. Department of Defense Personal Property Program	\$0.10 per pound
107830	<b>Jewelry</b> , costume or novelty, made of materials other than solid or filled precious metals, not mounted nor set with precious stones	\$5.00 per pound
116030	<b>Machines, Systems or Devices</b> , data processing, or <b>Components, Parts or Peripherals thereof</b>	\$25.00 per pound
136500	<b>Metal</b> , NOI or <b>Metal Alloys</b> , NOI	\$5.00 per pound
164900	<b>Radioactive Materials</b>	\$25.00 per pound
168960	<b>Records, Documents or Files</b> , office	\$0.25 per pound
196420	<b>Watches or Watch Movements</b>	\$10.00 each

Where the provisions of other tariffs apply, and those provisions specify a limitation of the carrier's liability absent a release or value declaration by the shipper, the carrier's liability shall be limited to the extent provided by such applicable provisions when the shipper does not make the requisite or specified release or value declaration.

## SUBJECT 18

Proposed Classification Provisions

Item	Description	Class
70080	<b>Flatware, Dresserware or Holloware</b> , sterling silver; or <b>Flatware, Dresserware or Holloware</b> , with sterling silver parts, such as backs, covers, frames, handles or tops, etc .....	⇒Cancel; see item 101025 and provisions otherwise applicable
70082	NOTE—⇒Cancel; no further application.	
101025	<b>Household Utensils or Related Articles, viz.:</b> <b>Dusters</b> , NOI, in boxes; <b>Tools</b> , hand, kitchen, other than power, <b>viz.:</b> <b>Bottle Cappers</b> , in boxes; <b>Bottle or Can Openers</b> , NOI, in boxes; <b>Forks, Knives, Knife Blades or Spoons</b> , see Notes, items 101026, 101027 and 101028, in boxes; <b>Nutcrackers and Nutpicks</b> , NOI, in boxes; <b>Potato Mashers</b> , NOI, in boxes; <b>Squeezers or Extractors (Hand Juicers)</b> , NOI, in boxes; <b>Tools</b> , hand, kitchen, other than power, NOI, in boxes; [Other Articles Listed—No Change.] Subject to Item 170 and having a density in pounds per cubic foot of:	
Sub 1	Less than 1 .....	400
Sub 2	1 but less than 2 .....	300
Sub 3	2 but less than 4 .....	250
Sub 4	4 but less than 6 .....	175
Sub 5	6 but less than 8 .....	125
Sub 6	8 but less than 10 .....	100
Sub 7	10 but less than 12 .....	92.5
Sub 8	12 but less than 15 .....	85
Sub 9	15 but less than 22.5 .....	70
Sub 10	22.5 but less than 30 .....	65
Sub 11	30 but less than 35 .....	60
Sub 12	35 but less than 50 .....	55
Sub 13	50 or greater .....	50
101026	NOTE—No Change.	
101027	NOTE—No Change.	
101028	NOTE—No Change.	

## SUBJECT 18

**Proposed Classification Provisions—Concluded**

## Item 172

**LIMITATION OF CARRIER LIABILITY WHERE VALUE IS NOT DECLARED BY SHIPPER**

Where item 47500, 56165, 63025, ~~70080~~, 88160, 99400, 100240, 107830, 116030, 136500, 164900, 168960 or 196420 of this Classification applies, and shipper fails to declare a value as required by those provisions, the shipment will not be accepted, but if the shipment is inadvertently accepted, the carrier's liability shall be limited as follows:

ITEM NO.	DESCRIPTION	VALUE LIMITATION
47500	<b>Ceramicware, China, Earthenware, Porcelain or Stoneware</b> , NOI	\$1.70 per pound
56165	<b>Paintings or Pictures</b> , NOI, framed or unframed, with or without glass	\$25.00 per pound
63025	<b>Semiconductors, viz.: Devices</b> , NOI; <b>Diodes; Rectifiers; Thermistors; Transistors</b>	\$20.00 per pound
<del>70080</del>	<del>Flatware, Dresserware or Holloware</del> , sterling silver; or <b>Flatware, Dresserware or Holloware</b> , with sterling silver parts, such as backs, covers, frames, handles or tops	<del>\$5.00 per pound</del>
88160	<b>Glassware</b> , NOI	\$19.00 per pound
99400	<b>Hides, Pelts or Skins</b> , dressed or tanned or not dressed nor tanned, NOI, dry	\$7.50 per pound
100240	<b>Household Goods, Personal Effects or Military Baggage</b> , other than shipments moving under the U.S. Department of Defense Personal Property Program	\$0.10 per pound
107830	<b>Jewelry</b> , costume or novelty, made of materials other than solid or filled precious metals, not mounted nor set with precious stones	\$5.00 per pound
116030	<b>Machines, Systems or Devices</b> , data processing, or <b>Components, Parts or Peripherals thereof</b>	\$25.00 per pound
136500	<b>Metal</b> , NOI or <b>Metal Alloys</b> , NOI	\$5.00 per pound
164900	<b>Radioactive Materials</b>	\$25.00 per pound
168960	<b>Records, Documents or Files</b> , office	\$0.25 per pound
196420	<b>Watches or Watch Movements</b>	\$10.00 each

Where the provisions of other tariffs apply, and those provisions specify a limitation of the carrier's liability absent a release or value declaration by the shipper, the carrier's liability shall be limited to the extent provided by such applicable provisions when the shipper does not make the requisite or specified release or value declaration.

SUBJECT 18

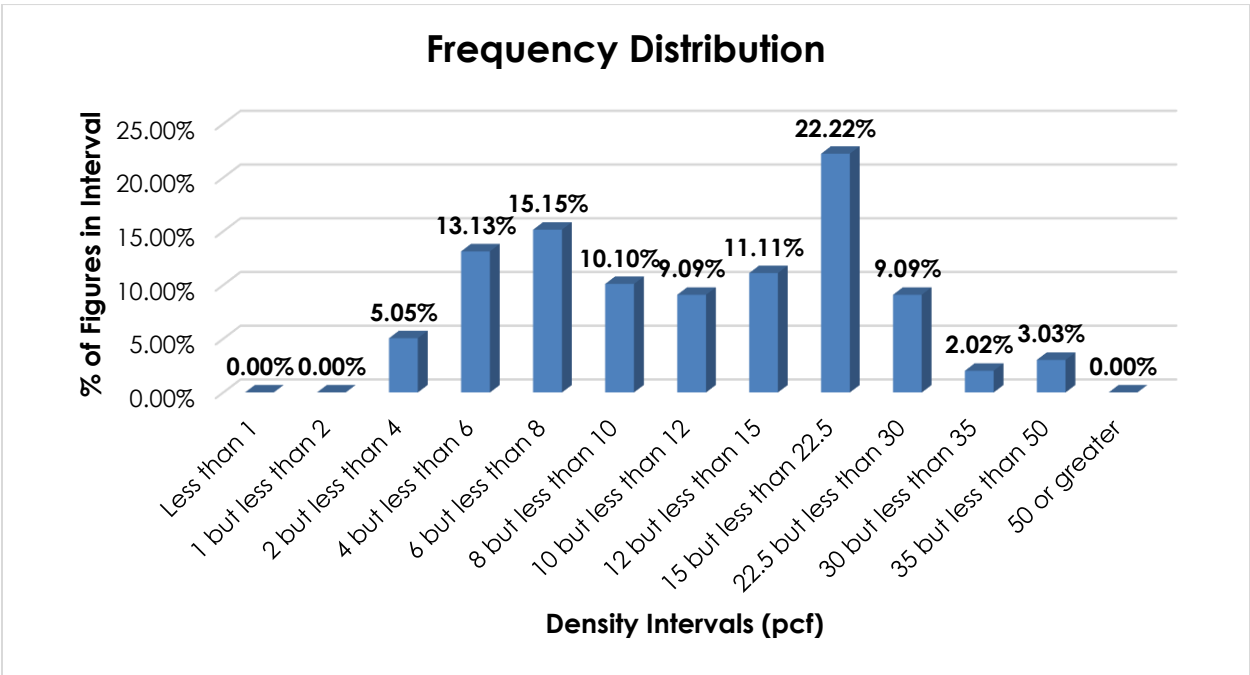
Analysis

Introduction

Item 70080 as shown in the Present Classification Provisions herein, name particular types flatware, holloware or dresserware. This item was reviewed with the intent of removing value-based provisions, combining like commodities, and examining these products' transportation characteristics.

Transportation Characteristics

**Density**—The information of record includes 99 density observations obtained from the FCDC's Density Study<sup>1</sup>. The densities range from 2.91 to 42.06 pcf, with an average density of 13.72 pcf. As shown in the graph below, the densities are distributed throughout the range, with a distinct peak in the 15 but less than 22.5 pcf interval.



**Handling, Stowability, and Liability**—There have been no reports of unusual or significant handling, stowability, or liability issues.

<sup>1</sup> The Density Study is part of an ongoing effort by the FCDC to collect information on actual shipments across all product categories handled by the LTL industry. Carriers that choose to participate in the Study periodically submit shipment data captured through their respective freight auditing programs. The FCDC uses verifiable data points, identified by NMFC item, that include the weight and the dimensions and/or cube of the shipping unit.

**SUBJECT 18****Conclusion**

Based on the foregoing analysis, item 70080 would be canceled with reference to the full-scale, density-based provisions of item 101025<sup>2</sup> and provisions otherwise applicable. Note, item 70082 would be canceled with no further application.

Additionally, Item (Rule) 172 would be amended to remove reference to item 70080.

---

<sup>2</sup> Item 101025 provides the FCDC's 13-subprovision density scale, which includes reference to Item (Rule) 170, the inadvertence clause.