

## SUBJECT 16

## SUBJECT 16: Costume or Novelty Jewelry – Item 107830

**Re:** Costume or Novelty Jewelry – Item 107830**Contact:** Lanae Peterson

FCDC@nmfta.org

**Proponent:** Freight Classification Development Council**Quick View**

*The Quick View feature is not intended to replace contextual information within this document. To understand the potential impact of the recommended changes shown here, please read the full proposal.*

**Subject 16: Costume or Novelty Jewelry – Item 107830**

**Quick View:** Item 107830 is canceled with reference to item 56290, which provides a “viz.” format, and classes based on the FCDC’s 13-sub provision density scale.

- Note, item 107834 canceled with no further application
- Item (Rule) 172 amended

**Transportation Characteristics Present:**

- Handling ☐Yes ☒No   Stowability ☐Yes ☒No   Liability ☐Yes ☒No   Density ☒Yes ☐No

**Provisions based on:**

- FCDC’s 13-sub density scale

## SUBJECT 16

Present Classification Provisions

Item	Description	Class
56290	<b>Decorations, Notions or Novelties</b> , see Notes, items 56291 and 56292, <b>viz.:</b> <b>Decorations, Notions or Novelties</b> , NOI; [Other Articles Listed—Not Involved.] In boxes, subject to Item 170 and having a density in pounds per cubic foot of:	
Sub 1	Less than 1 .....	400
Sub 2	1 but less than 2 .....	300
Sub 3	2 but less than 4 .....	250
Sub 4	4 but less than 6 .....	175
Sub 5	6 but less than 8 .....	125
Sub 6	8 but less than 10 .....	100
Sub 7	10 but less than 12 .....	92.5
Sub 8	12 but less than 15 .....	85
Sub 9	15 but less than 22.5 .....	70
Sub 10	22.5 but less than 30 .....	65
Sub 11	30 but less than 35 .....	60
Sub 12	35 but less than 50 .....	55
Sub 13	50 or greater .....	50
56291	NOTE—Not Involved.	
56292	NOTE—Not Involved.	
56294	NOTE—Not Involved.	
56295	NOTE—Not Involved.	
107830	<b>Jewelry</b> , costume or novelty, made of materials other than solid or filled precious metals, not mounted nor set with precious stones, see Note, item 107834, in boxes or Package 2213:	
Sub 1	Released value not exceeding \$1.00 per pound .....	100
Sub 2	Released value exceeding \$1.00 per pound but not exceeding \$5.00 per pound .....	200
Sub 3	If shipper declines to release each pound to a value not exceeding \$5.00 per pound, the shipment will not be accepted.	

SUBJECT 16

Present Classification Provisions—Continued

Item	Description	Class
107834	<p>NOTE—The released value must be entered on the shipping order and bill of lading in the following form:</p> <p style="padding-left: 40px;"><i>“The agreed or declared value of the property is hereby specifically stated by the shipper to be not exceeding _____ per pound.”</i></p> <p>If the shipper fails or declines to execute the above statement or designates a value exceeding \$20.00 per pound, shipment will not be accepted, but if shipment is inadvertently accepted, charges initially will be assessed on the basis of the class for the highest value provided. Upon proof of lower actual value, the freight charges will be adjusted to those that would apply if the shipment had been released to the amount of its actual value.</p> <p style="padding-left: 40px;">(Classes herein based on released value have been authorized by the Interstate Commerce Commission in Released Rates Order No. MC-529 of March 21, 1963, as amended May 15, 1964 and March 31, 1980.)</p>	

THIS SPACE INTENTIONALLY LEFT BLANK

## SUBJECT 16

Present Classification Provisions—Concluded

## Item 172

**LIMITATION OF CARRIER LIABILITY WHERE VALUE IS NOT DECLARED BY SHIPPER**

Where item 47500, 56165, 63025, 70080, 88160, 99400, 100240, 107830, 116030, 136500, 164900, 168960 or 196420 of this Classification applies, and shipper fails to declare a value as required by those provisions, the shipment will not be accepted, but if the shipment is inadvertently accepted, the carrier's liability shall be limited as follows:

ITEM NO.	DESCRIPTION	VALUE LIMITATION
47500	<b>Ceramicware, China, Earthenware, Porcelain or Stoneware</b> , NOI	\$1.70 per pound
56165	<b>Paintings or Pictures</b> , NOI, framed or unframed, with or without glass	\$25.00 per pound
63025	<b>Semiconductors, viz.: Devices</b> , NOI; <b>Diodes; Rectifiers; Thermistors; Transistors</b>	\$20.00 per pound
70080	<b>Flatware, Dresserware or Holloware</b> , sterling silver; or <b>Flatware, Dresserware or Holloware</b> , with sterling silver parts, such as backs, covers, frames, handles or tops	\$5.00 per pound
88160	<b>Glassware</b> , NOI	\$19.00 per pound
99400	<b>Hides, Pelts or Skins</b> , dressed or tanned or not dressed nor tanned, NOI, dry	\$7.50 per pound
100240	<b>Household Goods, Personal Effects or Military Baggage</b> , other than shipments moving under the U.S. Department of Defense Personal Property Program	\$0.10 per pound
107830	<b>Jewelry</b> , costume or novelty, made of materials other than solid or filled precious metals, not mounted nor set with precious stones	\$5.00 per pound
116030	<b>Machines, Systems or Devices</b> , data processing, or <b>Components, Parts or Peripherals thereof</b>	\$25.00 per pound
136500	<b>Metal</b> , NOI or <b>Metal Alloys</b> , NOI	\$5.00 per pound
164900	<b>Radioactive Materials</b>	\$25.00 per pound
168960	<b>Records, Documents or Files</b> , office	\$0.25 per pound
196420	<b>Watches or Watch Movements</b>	\$10.00 each

Where the provisions of other tariffs apply, and those provisions specify a limitation of the carrier's liability absent a release or value declaration by the shipper, the carrier's liability shall be limited to the extent provided by such applicable provisions when the shipper does not make the requisite or specified release or value declaration.

## SUBJECT 16

Proposed Classification Provisions

Item	Description	Class
56290	<b>Decorations, Notions or Novelties</b> , see Notes, items 56291 and 56292, <b>viz.:</b> <b>Decorations, Notions or Novelties</b> , NOI; ⇒ <b>Jewelry</b> , costume or novelty, made of materials other than solid or filled precious metals, not mounted nor set with precious stones; [Other Articles Listed—No Change.] In boxes, subject to Item 170 and having a density in pounds per cubic foot of:	
Sub 1	Less than 1 .....	400
Sub 2	1 but less than 2 .....	300
Sub 3	2 but less than 4 .....	250
Sub 4	4 but less than 6 .....	175
Sub 5	6 but less than 8 .....	125
Sub 6	8 but less than 10 .....	100
Sub 7	10 but less than 12 .....	92.5
Sub 8	12 but less than 15 .....	85
Sub 9	15 but less than 22.5 .....	70
Sub 10	22.5 but less than 30 .....	65
Sub 11	30 but less than 35 .....	60
Sub 12	35 but less than 50 .....	55
Sub 13	50 or greater .....	50
56291	NOTE—No Change.	
56292	NOTE—No Change.	
56294	NOTE—No Change.	
56295	NOTE—No Change.	
107830	<b>Jewelry</b> , costume or novelty, made of materials other than solid or filled precious metals, not mounted nor set with precious stones, etc.....	⇒ Cancel; see item 56290
107834	NOTE—⇒ Cancel; no further application.	

## SUBJECT 16

**Proposed Classification Provisions—Concluded**

## Item 172

**LIMITATION OF CARRIER LIABILITY WHERE VALUE IS NOT DECLARED BY SHIPPER**

Where item 47500, 56165, 63025, 70080, 88160, 99400, 100240, ~~1107830~~, 116030, 136500, 164900, 168960 or 196420 of this Classification applies, and shipper fails to declare a value as required by those provisions, the shipment will not be accepted, but if the shipment is inadvertently accepted, the carrier's liability shall be limited as follows:

ITEM NO.	DESCRIPTION	VALUE LIMITATION
47500	<b>Ceramicware, China, Earthenware, Porcelain or Stoneware</b> , NOI	\$1.70 per pound
56165	<b>Paintings or Pictures</b> , NOI, framed or unframed, with or without glass	\$25.00 per pound
63025	<b>Semiconductors, viz.: Devices</b> , NOI; <b>Diodes; Rectifiers; Thermistors; Transistors</b>	\$20.00 per pound
70080	<b>Flatware, Dresserware or Holloware</b> , sterling silver; or <b>Flatware, Dresserware or Holloware</b> , with sterling silver parts, such as backs, covers, frames, handles or tops	\$5.00 per pound
88160	<b>Glassware</b> , NOI	\$19.00 per pound
99400	<b>Hides, Pelts or Skins</b> , dressed or tanned or not dressed nor tanned, NOI, dry	\$7.50 per pound
100240	<b>Household Goods, Personal Effects or Military Baggage</b> , other than shipments moving under the U.S. Department of Defense Personal Property Program	\$0.10 per pound
<del>1107830</del>	<del><b>Jewelry</b>, costume or novelty, made of materials other than solid or filled precious metals, not mounted nor set with precious stones</del>	<del>\$5.00 per pound</del>
116030	<b>Machines, Systems or Devices</b> , data processing, or <b>Components, Parts or Peripherals thereof</b>	\$25.00 per pound
136500	<b>Metal</b> , NOI or <b>Metal Alloys</b> , NOI	\$5.00 per pound
164900	<b>Radioactive Materials</b>	\$25.00 per pound
168960	<b>Records, Documents or Files</b> , office	\$0.25 per pound
196420	<b>Watches or Watch Movements</b>	\$10.00 each

Where the provisions of other tariffs apply, and those provisions specify a limitation of the carrier's liability absent a release or value declaration by the shipper, the carrier's liability shall be limited to the extent provided by such applicable provisions when the shipper does not make the requisite or specified release or value declaration.

SUBJECT 16

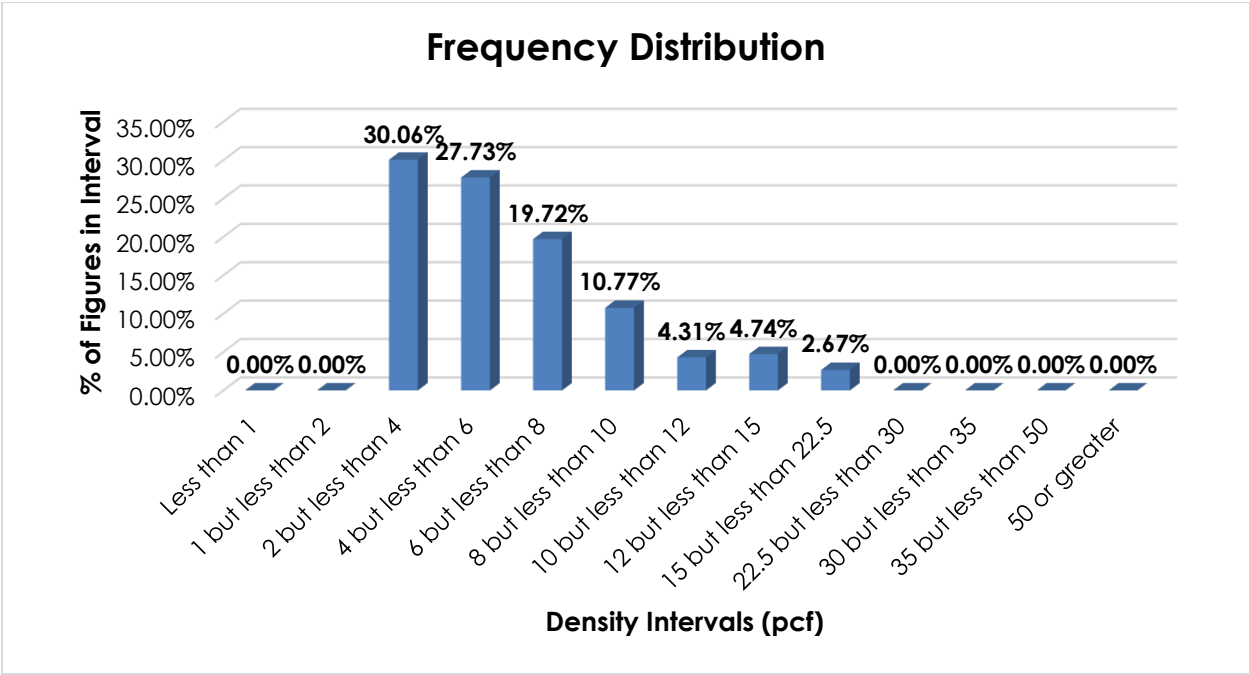
Analysis

Introduction

Item 107830 names particular types of costume or novelty jewelry. This item was reviewed with the intent of removing value-based provisions, combining like commodities, and examining the involved products' transportation characteristics.

Transportation Characteristics

**Density**—The information of record includes 1,161 density observations obtained from the FCDC's Density Study<sup>1</sup>. The densities range from 2.04 to 20.74 pcf, with an average density of 6.17 pcf. As shown in the graph below, the density distribution is right-skewed, with the highest peak in the 2 but less than 4 pcf interval.



**Handling, Stowability, and Liability**—There have been no reports of unusual or significant handling, stowability, or liability issues.

<sup>1</sup> The Density Study is part of an ongoing effort by the FCDC to collect information on actual shipments across all product categories handled by the LTL industry. Carriers that choose to participate in the Study periodically submit shipment data captured through their respective freight auditing programs. The FCDC uses verifiable data points, identified by NMFC item, that include the weight and the dimensions and/or cube of the shipping unit.

**SUBJECT 16****Conclusion**

Based on the foregoing analysis, item 107830 would be canceled with reference to the full-scale, density-based provisions of item 56290<sup>2</sup>. Concurrently, this proposal would amend the "viz." listing in item 56290 to name "Jewelry, costume or novelty," with additional descriptive language restricting jewelry consisting of precious metals or stones from moving under this item.

Note, item 107834 would be canceled with no further application.

Additionally, the FCDC's Packaging Development Manager has reviewed the proposed minimum packaging requirements, i.e. "in boxes," and determined that they are appropriate for the LTL environment.

Furthermore, Item (Rule) 172 would be amended to remove reference to item 107830.

---

<sup>2</sup> Item 56290 provides the FCDC's 13-subprovision density scale, which includes reference to Item (Rule) 170, the inadvertence clause.