

SUBJECT 6

SUBJECT 6: Hides Group

Re: Hides Group

Contact: Amber Parker

FCDC@nmfta.org

Proponent: Freight Classification Development Council

Quick View

The Quick View feature is not intended to replace contextual information within this document. To understand the potential impact of the recommended changes shown here, please read the full proposal.

Subject 6: Hides Group

Quick View: Thirteen items subject to the hides group are canceled with reference to a new item, with classes predicated on the FCDC's 13-sub density scale.

- Two new Notes established attendant to the new item
- Item 98930 canceled with reference to item 14400
- Generic heading, item 98800, canceled with no further application
- Two sub-generic headings canceled with no further application
- Note, item 99402 canceled with no further application
- Item (Rule) 172 amended

Transportation Characteristics Present:

- Handling ☐Yes ☒No Stowability ☐Yes ☒No Liability ☐Yes ☒No Density ☒Yes ☐No

Provisions based on:

- FCDC's 13-sub density scale

SUBJECT 6

Present Classification Provisions

Item	Description	Class
14400	Animals , including Animal Heads, Birds, Fish or Reptiles , stuffed, other than toy, see Note, item 14402, in boxes or crates.....	300
14402	NOTE—Applies only on skins, hides, carcasses or part carcasses mounted, treated or preserved by taxidermy methods.	
98800	HIDES GROUP: Articles consist of Hides, Pelts or Skins, inedible, as described in items subject to this grouping.	
98820	Hides, Pelts or Skins , dressed or tanned, and fur, hair, or wool not removed:	
98840	Cattle, Goat, Horse, Rabbit or Sheep , in bales, boxes or drums	100
98860	Clippings or Scraps , cattle, goat, horse or sheep, in bags, bales, boxes or drums.....	70
98880	Clippings or Scraps , rabbit:	
Sub 1	In bags, or in bales not machine pressed	100
Sub 2	In machine pressed bales or in boxes	85
98900	Clippings or Scraps , NOI, in packages.....	100
98930	Deer, Elk, Buffalo or Bear , with heads stuffed and left attached, in boxes or drums.....	200
98950	Hides, Pelts or Skins , not dressed nor tanned:	
98970	Alligator, Antelope, Deer, Elk or Moose , green, green salted or pickled, in packages	85
98990	Badger, Coney, Kangaroo, Nutria, Rabbit, Vizcachas, Wombat or Wallaby , dry, in bales or boxes	100
99080	Cattle or Horse , green, green salted or pickled, in packages.....	65
99140	Goat or Sheep , dry:	
Sub 1	In packages not machine pressed	100
Sub 2	In machine pressed bales or in machine pressed bales in boxes	85
99150	Goat or Sheep , green, green salted or pickled, in packages	65
99170	Hog or Pig , dry:	
Sub 1	In packages not machine pressed	100
Sub 2	In machine pressed bales	85
99330	Switches or Tails , cattle or horse, green salted, in packages	65
99400	Hides, Pelts or Skins , dressed or tanned or not dressed nor tanned, NOI, dry, see Note, item 99402:	
Sub 1	Released to value not exceeding \$1.50 per pound, in packages	100
Sub 2	Released to value exceeding \$1.50 per pound but not exceeding \$5.00 per pound, in packages.....	250
Sub 3	Released to value exceeding \$5.00 per pound but not exceeding \$7.50 per pound, in packages.....	300

SUBJECT 6

Present Classification Provisions—Continued

Item	Description	Class
	HIDES GROUP: subject to item 98800	
99402	NOTE—The released value must be entered on the shipping order and bill of lading in the following form: <i>"The agreed or declared value of the property is hereby specifically stated by the shipper to be not exceeding _____ per pound."</i> If the shipper fails or declines to execute the above statement or designates a value exceeding \$7.50 per pound, shipment will not be accepted, but if shipment is inadvertently accepted, charges initially will be assessed on the basis of the class for the highest value provided. Upon proof of lower actual value, the freight charges will be adjusted to those that would apply if the shipment had been released to the amount of its actual value. (Classes herein based on released value have been authorized by the Interstate Commerce Commission in Released Rates Order No. MC-519 of October 12, 1962, as amended November 19, 1962.)	
99420	Hides, Pelts or Skins , not dressed nor tanned, NOI, green, green salted or pickled, in packages	100

THIS SPACE INTENTIONALLY LEFT BLANK

SUBJECT 6

Present Classification Provisions—Concluded

Item 172

LIMITATION OF CARRIER LIABILITY WHERE VALUE IS NOT DECLARED BY SHIPPER

Where item 47500, 56165, 63025, 70080, 88160, 99400, 100240, 107830, 116030, 136500, 164900, 168960 or 196420 of this Classification applies, and shipper fails to declare a value as required by those provisions, the shipment will not be accepted, but if the shipment is inadvertently accepted, the carrier's liability shall be limited as follows:

ITEM NO.	DESCRIPTION	VALUE LIMITATION
47500	Ceramicware, China, Earthenware, Porcelain or Stoneware , NOI	\$1.70 per pound
56165	Paintings or Pictures , NOI, framed or unframed, with or without glass	\$25.00 per pound
63025	Semiconductors, viz.: Devices , NOI; Diodes; Rectifiers; Thermistors; Transistors	\$20.00 per pound
70080	Flatware, Dresserware or Holloware , sterling silver; or Flatware, Dresserware or Holloware , with sterling silver parts, such as backs, covers, frames, handles or tops	\$5.00 per pound
88160	Glassware , NOI	\$19.00 per pound
99400	Hides, Pelts or Skins , dressed or tanned or not dressed nor tanned, NOI, dry	\$7.50 per pound
100240	Household Goods, Personal Effects or Military Baggage , other than shipments moving under the U.S. Department of Defense Personal Property Program	\$0.10 per pound
107830	Jewelry , costume or novelty, made of materials other than solid or filled precious metals, not mounted nor set with precious stones	\$5.00 per pound
116030	Machines, Systems or Devices , data processing, or Components, Parts or Peripherals thereof	\$25.00 per pound
136500	Metal , NOI or Metal Alloys , NOI	\$5.00 per pound
164900	Radioactive Materials	\$25.00 per pound
168960	Records, Documents or Files , office	\$0.25 per pound
196420	Watches or Watch Movements	\$10.00 each

Where the provisions of other tariffs apply, and those provisions specify a limitation of the carrier's liability absent a release or value declaration by the shipper, the carrier's liability shall be limited to the extent provided by such applicable provisions when the shipper does not make the requisite or specified release or value declaration.

SUBJECT 6

Proposed Classification Provisions

Item	Description	Class
14400	Animals , including Animal Heads, Birds, Fish or Reptiles , stuffed, other than toy, see Note, item 14402, in boxes or crates	300
14402	NOTE—No Change.	
98800	HIDES GROUP , etc	⇒Cancel; no further application
98820	Hides, Pelts or Skins , dressed or tanned, and fur, hair, or wool not removed.....	⇒Cancel; no further application
98840	Cattle, Goat, Horse, Rabbit or Sheep , etc	⇒Cancel; see item A-NEW
98860	Clippings or Scraps , cattle, goat, horse or sheep, etc	⇒Cancel; see item A-NEW
98880	Clippings or Scraps , rabbit, etc.....	⇒Cancel; see item A-NEW
98900	Clippings or Scraps , NOI, etc.....	⇒Cancel; see item A-NEW
98930	Deer, Elk, Buffalo or Bear , with heads stuffed and left attached, etc	⇒Cancel; see item 14400
98950	Hides, Pelts or Skins , not dressed nor tanned	⇒Cancel; no further application
98970	Alligator, Antelope, Deer, Elk or Moose , green, green salted or pickled, etc.....	⇒Cancel; see item A-NEW
98990	Badger, Coney, Kangaroo, Nutria, Rabbit, Vizcachas, Wombat or Wallaby , dry, etc.....	⇒Cancel; see item A-NEW
99080	Cattle or Horse , green, green salted or pickled, etc	⇒Cancel; see item A-NEW
99140	Goat or Sheep , dry, etc	⇒Cancel; see item A-NEW
99150	Goat or Sheep , green, green salted or pickled, etc	⇒Cancel; see item A-NEW
99170	Hog or Pig , dry, etc	⇒Cancel; see item A-NEW
99330	Switches or Tails , cattle or horse, green salted, etc	⇒Cancel; see item A-NEW
99400	Hides, Pelts or Skins , dressed or tanned or not dressed nor tanned, NOI, dry, etc.....	⇒Cancel; see item A-NEW
99402	NOTE—⇒Cancel; no further application.	
99420	Hides, Pelts or Skins , not dressed nor tanned, NOI, green, green salted or pickled, etc	⇒Cancel; see item A-NEW

SUBJECT 6

Proposed Classification Provisions—Continued

Item	Description	Class
⇒A-NEW	Hides, Pelts or Skins, or Parts thereof , NOI, including Clippings or Scraps , see Note, item B-NEW, in bags, bales, boxes or drums or secured on lift truck skids or pallets, see Note, item C-NEW, subject to Item 170 and having a density in pounds per cubic foot of:	
Sub 1	Less than 1.....	400
Sub 2	1 but less than 2.....	300
Sub 3	2 but less than 4.....	250
Sub 4	4 but less than 6.....	175
Sub 5	6 but less than 8.....	125
Sub 6	8 but less than 10.....	100
Sub 7	10 but less than 12.....	92.5
Sub 8	12 but less than 15.....	85
Sub 9	15 but less than 22.5.....	70
Sub 10	22.5 but less than 30.....	65
Sub 11	30 but less than 35.....	60
Sub 12	35 but less than 50.....	55
Sub 13	50 or greater.....	50
⇒B-NEW	NOTE—Does not apply on articles treated or preserved by taxidermy methods. For applicable provisions, see item 14400.	
⇒C-NEW	NOTE—Hides, pelts, skins, clippings, scraps, or parts thereof tendered for shipment on lift truck skids, pallets or platforms must not overhang the skid, pallet or platform deck, and all exposed surfaces and edges must be protected by packing forms or other packaging materials so as to withstand the normal rigors of the less-than-truckload environment. Hides, pelts, skins, clippings, scraps, or parts thereof stacked on lift truck skids, pallets or platforms must be secured to the lift truck skid, pallet or platform by strapping in opposing directions, with at least two straps in each direction to prevent shifting of the load. All corners and strapping contact points must be protected by packing forms.	

SUBJECT 6

Proposed Classification Provisions—Concluded

Item 172

LIMITATION OF CARRIER LIABILITY WHERE VALUE IS NOT DECLARED BY SHIPPER

Where item 47500, 56165, 63025, 70080, 88160, ~~99400~~, 100240, 107830, 116030, 136500, 164900, 168960 or 196420 of this Classification applies, and shipper fails to declare a value as required by those provisions, the shipment will not be accepted, but if the shipment is inadvertently accepted, the carrier's liability shall be limited as follows:

ITEM NO.	DESCRIPTION	VALUE LIMITATION
47500	Ceramicware, China, Earthenware, Porcelain or Stoneware , NOI	\$1.70 per pound
156165	Paintings or Pictures , NOI, framed or unframed, with or without glass	\$25.00 per pound
63025	Semiconductors, viz.: Devices , NOI; Diodes; Rectifiers; Thermistors; Transistors	\$20.00 per pound
70080	Flatware, Dresserware or Holloware , sterling silver; or Flatware, Dresserware or Holloware , with sterling silver parts, such as backs, covers, frames, handles or tops	\$5.00 per pound
88160	Glassware , NOI	\$19.00 per pound
99400	Hides, Pelts or Skins, dressed or tanned or not dressed nor tanned, NOI, dry	\$7.50 per pound
100240	Household Goods, Personal Effects or Military Baggage , other than shipments moving under the U.S. Department of Defense Personal Property Program	\$0.10 per pound
107830	Jewelry , costume or novelty, made of materials other than solid or filled precious metals, not mounted nor set with precious stones	\$5.00 per pound
116030	Machines, Systems or Devices , data processing, or Components, Parts or Peripherals thereof	\$25.00 per pound
136500	Metal , NOI or Metal Alloys , NOI	\$5.00 per pound
164900	Radioactive Materials	\$25.00 per pound
168960	Records, Documents or Files , office	\$0.25 per pound
196420	Watches or Watch Movements	\$10.00 each

Where the provisions of other tariffs apply, and those provisions specify a limitation of the carrier's liability absent a release or value declaration by the shipper, the carrier's liability shall be limited to the extent provided by such applicable provisions when the shipper does not make the requisite or specified release or value declaration.

SUBJECT 6

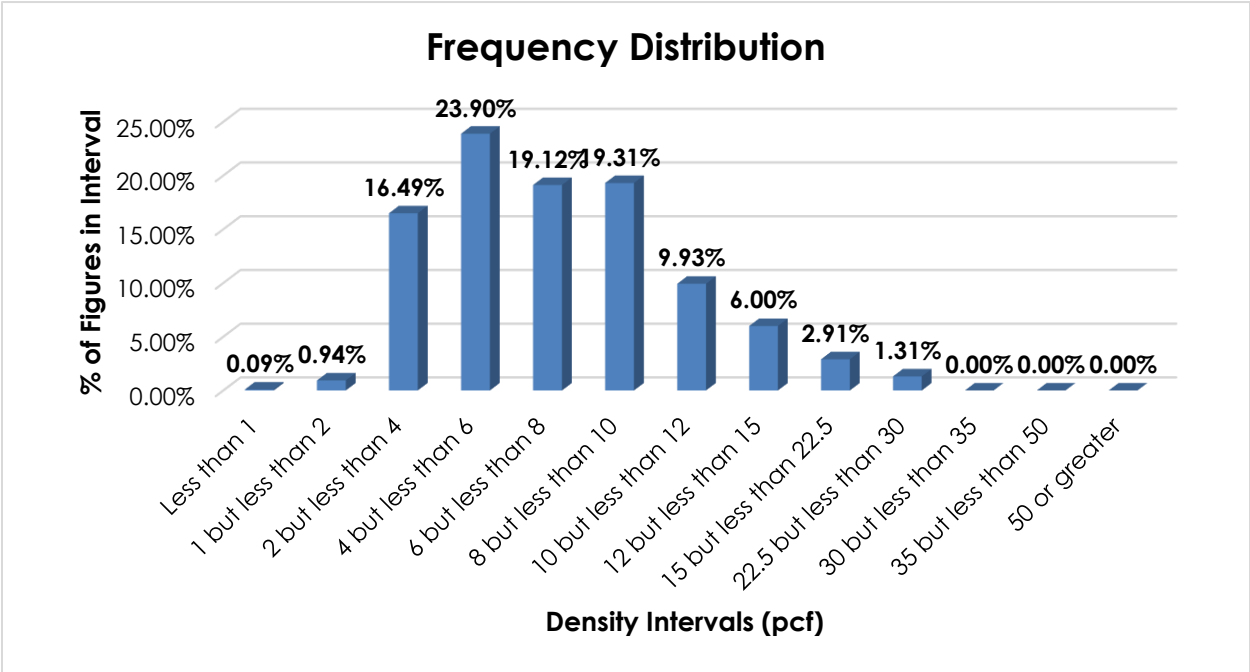
Analysis

Introduction

Fourteen items, as shown in the Present Classification Provisions herein, name particular types of hides, pelts, or skins, and these provisions can be difficult to interpret, apply, or verify. The transportation characteristics below relate to the items shown in the Present Classification Provisions herein.

Transportation Characteristics

The information of record includes 1,067 density observations obtained from the FCDC's Density Study¹. The densities range from 0.72 to 27.20 pcf, with an overall average density of 7.47 pcf. As shown in the graph on the following page, the density distribution is right-skewed with a peak at the 4 but less than 6 pcf interval.



Handling, Stowability and Liability—There have been no reports of unusual or significant handling, stowability or liability issues.

¹ The Density Study is part of an ongoing effort by the FCDC to collect information on actual shipments across all product categories handled by the LTL industry. Carriers that choose to participate in the Study periodically submit shipment data captured through their respective freight auditing programs. The FCDC uses verifiable data points, identified by NMFC item, that include the weight and the dimensions and/or cube of the shipping unit.

SUBJECT 6**Conclusion**

Based on the foregoing analysis, thirteen items subject to the Hides Group would be canceled with reference to a new item, naming "Hides, Pelts or Skins, or Parts thereof, NOI, including Clippings or Scraps." The new item would provide classes predicated on the FCDC's standard 13-subprovision density scale². One new Note would be established attendant to the new item to clarify its application. Item 98930 would be canceled with reference to item 14400.

Note, item 99402 would be canceled with no further application as would two subgeneric headings, items 98820 and 98950, and the Hides Group, item 98800.

The FCDC's Packaging Development Manager has reviewed the proposed minimum packaging requirements and determined they are appropriate for the LTL environment. One new Note providing additional packaging requirements would also be established.

Concurrently, Item (Rule) 172 would be amended to remove reference to item 99400.

² The FCDC's standard 13-subprovision density scale includes reference to Item (Rule) 170, the inadvertence clause.