

SUBJECT 5

SUBJECT 5: Building Metalwork Group

Re: Building Metalwork Group

Contact: Adam Mercer

FCDC@nmfta.org

Proponent: Freight Classification Development Council

Quick View

The Quick View feature is not intended to replace contextual information within this document. To understand the potential impact of the recommended changes shown here, please read the full proposal.

Subject 5: Building Metalwork Group

Quick View: Various items in the Building Metalwork Group are canceled with reference to a new item, which would provide a “viz.” format, and classes based on the FCDC’s 13-subprovision density scale.

- Items 36150 and 36590 canceled with reference to items 95190 and 34780, respectively
- Three Notes canceled with reference to two new Notes attendant to the new item
- Two Notes canceled with no further application

Transportation Characteristics Present:

- Handling ☐Yes ☒No Stowability ☐Yes ☒No Liability ☐Yes ☒No Density ☒Yes ☐No

Provisions based on:

- FCDC’s 13-sub density scale

SUBJECT 5

Present Classification Provisions

Item	Description	Class
BUILDING MATERIALS, MISCELLANEOUS, GROUP: subject to item 33570		
34780	Frames , window, or Sash , separate or combined, not glazed, NOI, see Note, item 34781:	
Sub 1	Aluminum or aluminum and iron or steel combined, see Note, item 34783:	
Sub 2	SU, in boxes or crates	200
Sub 3	KD, in boxes or in tubes with closed ends.....	100
Sub 4	Metal, other than aluminum or aluminum and iron or steel combined; or wood:	
Sub 5	SU, in boxes, crates or Package 2209, see Note, item 34782	125
Sub 6	KD, in packages	70
34781	NOTE—Also applies on accessorial hardware, provided the combined weight of such hardware does not exceed 15 percent of the weight on which charges are assessed.	
34782	NOTE—Class also applies on one sliding screen door of the size to be utilized with the door sash when shipped in Package 2209 with the door sash.	
34783	NOTE—Commodities may be shipped wrapped in corrugated fiberboard testing not less than 125 pounds.	
BUILDING METALWORK GROUP: subject to item 35600		
35690	Area Walls (Window Wells) , corrugated iron or steel, in nests of not less than 24, see Note, item 35691, in packages.....	55
35691	NOTE—For provisions applicable to area walls (window wells) when tendered other than in nests of 24 or greater, see item 35850, 'Building Sheet Metalwork, NOI.'	
35720	Bars , glass setting, aluminum, brass, bronze or copper, in boxes, crates or drums.....	77.5
35730	Bars , glass setting, lead and steel combined, zinc, or copper plated zinc, in boxes, crates or drums.....	70
35740	Bars , glass setting, steel or steel with not exceeding 10 percent by weight of other metals, in boxes, crates or drums.....	60
35750	Braces or Bridging , joist or stringer, steel, 20 gauge or thicker, nested solid, in packages	50
35840	Building Corners or Shields (Covers for weatherboard or lap siding corner angles), metal, nested solid, in boxes.....	70

SUBJECT 5

Present Classification Provisions—Continued

Item	Description	Class
BUILDING METALWORK GROUP: subject to item 35600		
35850	Building Sheet Metalwork , NOI, in packages, subject to Item 170 and having a density in pounds per cubic foot of:	
Sub 1	Less than 1.....	400
Sub 2	1 but less than 2.....	300
Sub 3	2 but less than 4.....	250
Sub 4	4 but less than 6.....	175
Sub 5	6 but less than 8.....	125
Sub 6	8 but less than 10.....	100
Sub 7	10 but less than 12.....	92.5
Sub 8	12 but less than 15.....	85
Sub 9	15 but less than 22.5.....	70
Sub 10	22.5 but less than 30.....	65
Sub 11	30 but less than 35.....	60
Sub 12	35 but less than 50.....	55
Sub 13	50 or greater.....	50
35920	Capitals, Cornice Brackets or Cornice Ornaments , sheet metal:	
Sub 1	Not nested, in boxes or crates.....	250
Sub 2	Nested, in packages.....	100
35932	NOTE—When in shipments of 24,000 pounds or more, provisions include accompanying equipment of hangers.	
35940	Capping , roof, iron, steel or tin plate, see Note, item 35932:	
Sub 1	Not nested, in boxes or crates.....	85
Sub 2	Nested, in packages.....	70
36040	Channel Sets , double-hung window sash, aluminum with steel sash balance, in boxes.....	77.5
36060	Chimney Caps or Cows , aluminum or copper, in boxes or crates:	
Sub 1	SU.....	200
Sub 2	KD flat.....	150
36070	Chimney Caps or Cows , iron or steel, cast, in packages.....	70
36080	Chimney Caps or Cows , iron or steel, sheet or sheet and cast combined, rotating:	
Sub 1	Exceeding 8 inches in diameter, in boxes or crates.....	200
Sub 2	Not exceeding 8 inches in diameter, in boxes or crates.....	150
36090	Chimney Caps or Cows , iron or steel, sheet or sheet and cast combined, other than rotating, in boxes or crates, subject to Item 170 and having a density in pounds per cubic foot of:	
Sub 1	Less than 10.....	175
Sub 2	10 or greater.....	77.5
36100	Chimney Flue Smoke or Ventilating Deflectors , cast iron, in boxes or crates..	70
36130	Chutes , laundry, linen or trash, in packages.....	200
36150	Clips , wallboard or plywood, aluminum, in boxes.....	85

SUBJECT 5

Present Classification Provisions—Continued

Item	Description	Class
BUILDING METALWORK GROUP: subject to item 35600		
36260	Cresting , roof, metal, NOI, in boxes or crates:	
Sub 1	Nested	70
Sub 2	Not nested	100
36510	Finials , roof, NOI, metal, in boxes or crates	200
36590	Frames , floor, sidewalk or vault light, iron or steel	70
36620	Grilles , door, aluminum, each not over 26 inches in height, see Note, item 36622, in boxes	85
36622	NOTE—The height is the dimension of the grille measured from top to bottom in its position as used.	
36630	Guards or Grilles , door, window or skylight, NOI, iron or steel wire:	
Sub 1	Nested; or in single panels, not joined one to another	77.5
Sub 2	Not nested; or other than single panels	125
36640	Guards or Grilles , door, window or skylight, NOI, iron or steel, other than wire (window grating)	70
36660	Gussets (Door Corners) , aluminum, in boxes	85
36680	Hangers , eave trough or conductor pipe, metal, in boxes or drums	70
36830	Panels , grille or lattice type, ornamental, die cast aluminum, detached from extruded aluminum supports or standards, in boxes	85
36840	Panels , window ventilating or shade, sheet and structural aluminum combined, see Note, item 36842, in boxes	100
36842	NOTE—Will also apply on accompanying structural supports and hardware necessary for installation.	
36900	Pockets , wall (Recesses , folding bench and table), 16 gauge or thicker steel, plain or primed	85
36950	Prison Work , steel, NOI	70
37060	Sash Mullions , steel bar, in packages	70
37140	Skylight Frames or Mounting Curbs , aluminum:	
Sub 1	SU or in SU sections	300
Sub 2	KD, in packages	100
37160	Skylight Frames , iron or steel:	
Sub 1	SU or in SU sections, not nested	150
Sub 2	SU or in SU sections, nested, in packages	100
Sub 3	KD flat, in packages	85
37170	Skylight Frames and Ventilators combined , metal:	
Sub 1	SU or SU in sections, loose or in packages	150
Sub 2	Frames KD flat, ventilators SU, in packages	150
Sub 3	KD flat, in packages	85
37210	Stair Treads or Risers , iron or steel, with metal or mineral filling, in packages ..	70
37220	Stair Treads or Risers , iron, NOI	55
37230	Stair Treads or Risers , metal, other than iron, steel or aluminum, with or without metal or mineral filling, in packages	85

SUBJECT 5

Present Classification Provisions—Concluded

Item	Description	Class
	BUILDING METALWORK GROUP: subject to item 35600	
37280	Thresholds or Sills , door, aluminum, or aluminum and rubber or flexible plastic combined, see Note, item 37282, in boxes or in fiberboard containers testing not less than 150 pounds 70	70
37282	NOTE—Also applies on accessories necessary for installation, not to exceed 10 percent of weight of shipment.	
37330	Ventilator Tops , chimney or roof, steel, SU, in boxes or crates 150	150
37340	Ventilators , chimney or roof, NOI, not chimney caps nor cowls, iron or steel:	
Sub 1	SU, in boxes or crates 200	200
Sub 2	Tops and bases separated, tops in bases, in boxes or crates 150	150
Sub 3	Tops SU, bases KD, nested, in bundles 150	150
Sub 4	Without bases, rotating mounting detached from hood and taken apart, hoods nested, in boxes 100	100
Sub 5	KD, in packages 100	100
37350	Ventilators , chimney or roof, NOI, not chimney caps nor cowls, metal, NOI, in boxes or crates 200	200
37360	Ventilators , foundation, cast aluminum alloy, in bundles 85	85
	HARDWARE GROUP: subject to item 92900	
95190	Hardware, viz.:	
	Clamps, Clips, Fasteners, or Latches , NOI, in boxes or Package 2518; [Other Articles Listed—Not Involved.]	
	Subject to Item 170 and having a density in pounds per cubic foot of:	
Sub 1	Less than 1 400	400
Sub 2	1 but less than 2 300	300
Sub 3	2 but less than 4 250	250
Sub 4	4 but less than 6 175	175
Sub 5	6 but less than 8 125	125
Sub 6	8 but less than 10 100	100
Sub 7	10 but less than 12 92.5	92.5
Sub 8	12 but less than 15 85	85
Sub 9	15 but less than 22.5 70	70
Sub 10	22.5 but less than 30 65	65
Sub 11	30 but less than 35 60	60
Sub 12	35 but less than 50 55	55
Sub 13	50 or greater 50	50
95191	NOTE—Not involved.	
95192	NOTE—Not involved.	
95193	NOTE—Not involved.	

SUBJECT 5

Proposed Classification Provisions

Item	Description	Class
	BUILDING MATERIALS, MISCELLANEOUS, GROUP: subject to item 33570	
34780	Frames, window, or Sash, separate or combined, not glazed, NOI, see Note, item 34781:	
Sub 1	Aluminum or aluminum and iron or steel combined, see Note, item 34783:	
Sub 2	SU, in boxes or crates	200
Sub 3	KD, in boxes or in tubes with closed ends.....	100
Sub 4	Metal, other than aluminum or aluminum and iron or steel combined; or wood:	
Sub 5	SU, in boxes, crates or Package 2209, see Note, item 34782	125
Sub 6	KD, in packages	70
34781	NOTE—Also applies on accessorial hardware, provided the combined weight of such hardware does not exceed 15 percent of the weight on which charges are assessed.	
34782	NOTE—Class also applies on one sliding screen door of the size to be utilized with the door sash when shipped in Package 2209 with the door sash.	
34783	NOTE—Commodities may be shipped wrapped in corrugated fiberboard testing not less than 125 pounds.	
	BUILDING METALWORK GROUP: subject to item 35600	
35690	Area Walls (Window Wells), corrugated iron or steel, in nests of not less than 24, etc.....	⇒Cancel; see item A-NEW
35691	NOTE—⇒Cancel; no further application.	
35720	Bars, glass setting, aluminum, brass, bronze or copper, etc	⇒Cancel; see item A-NEW
35730	Bars, glass setting, lead and steel combined, zinc, or copper plated zinc, etc	⇒Cancel; see item A-NEW
35740	Bars, glass setting, steel or steel with not exceeding 10 percent by weight of other metals, etc.....	⇒Cancel; see item A-NEW
35750	Braces or Bridging, joist or stringer, steel, 20 gauge or thicker, nested solid, etc	⇒Cancel; see item A-NEW
35840	Building Corners or Shields (Covers for weatherboard or lap siding corner angles), metal, nested solid, etc.....	⇒Cancel; see item A-NEW
35850	Building Sheet Metalwork, NOI, etc	⇒Cancel; see item A-NEW

SUBJECT 5

Proposed Classification Provisions—Continued

Item	Description	Class
	BUILDING METALWORK GROUP: subject to item 35600	
35920	Capitals, Cornice Brackets or Cornice Ornaments , sheet metal, etc.....	⇒Cancel; see item A-NEW
35932	NOTE—⇒Cancel; see item B-NEW.	
35940	Capping , roof, iron, steel or tin plate, see Note, item 35932.....	⇒Cancel; see item A-NEW
36040	Channel Sets , double-hung window sash, aluminum with steel sash balance, etc.....	⇒Cancel; see item A-NEW
36060	Chimney Caps or Cows , aluminum or copper, etc	⇒Cancel; see item A-NEW
36070	Chimney Caps or Cows , iron or steel, cast, etc.....	⇒Cancel; see item A-NEW
36080	Chimney Caps or Cows , iron or steel, sheet or sheet and cast combined, rotating, etc.....	⇒Cancel; see item A-NEW
36090	Chimney Caps or Cows , iron or steel, sheet or sheet and cast combined, other than rotating, etc.....	⇒Cancel; see item A-NEW
36100	Chimney Flue Smoke or Ventilating Deflectors , cast iron, etc	⇒Cancel; see item A-NEW
36130	Chutes , laundry, linen or trash, etc	⇒Cancel; see item A-NEW
36150	Clips , wallboard or plywood, aluminum, etc	⇒Cancel; see item 95190
36260	Cresting , roof, metal, NOI, etc.....	⇒Cancel; see item A-NEW
36510	Finials , roof, NOI, metal, etc	⇒Cancel; see item A-NEW
36590	Frames , floor, sidewalk or vault light, iron or steel	⇒Cancel; see item 34780
36620	Grilles , door, aluminum, each not over 26 inches in height, etc	⇒Cancel; see item A-NEW
36622	NOTE—⇒Cancel; no further application.	
36630	Guards or Grilles , door, window or skylight, NOI, iron or steel wire ..	⇒Cancel; see item A-NEW

SUBJECT 5

Proposed Classification Provisions—Continued

Item	Description	Class
	BUILDING METALWORK GROUP: subject to item 35600	
36640	Guards or Grilles , door, window or skylight, NOI, iron or steel, other than wire (window grating).....	⇒Cancel; see item A-NEW
36660	Gussets (Door Corners) , aluminum, etc	⇒Cancel; see item A-NEW
36680	Hangers , eave trough or conductor pipe, metal, etc.....	⇒Cancel; see item A-NEW
36830	Panels , grille or lattice type, ornamental, die cast aluminum, detached from extruded aluminum supports or standards, etc.....	⇒Cancel; see item A-NEW
36840	Panels , window ventilating or shade, sheet and structural aluminum combined, etc	⇒Cancel; see item A-NEW
36842	NOTE—⇒Cancel; see item B-NEW.	
36900	Pockets , wall (Recesses , folding bench and table), 16 gauge or thicker steel, plain or primed	⇒Cancel; see item A-NEW
36950	Prison Work , steel, NOI	⇒Cancel; see item A-NEW
37060	Sash Mullions , steel bar, etc	⇒Cancel; see item A-NEW
37140	Skylight Frames or Mounting Curbs , aluminum	⇒Cancel; see item A-NEW
37160	Skylight Frames , iron or steel.....	⇒Cancel; see item A-NEW
37170	Skylight Frames and Ventilators combined , metal	⇒Cancel; see item A-NEW
37210	Stair Treads or Risers , iron or steel, with metal or mineral filling, etc .	⇒Cancel; see item A-NEW
37220	Stair Treads or Risers , iron, NOI.....	⇒Cancel; see item A-NEW
37230	Stair Treads or Risers , metal, other than iron, steel or aluminum, with or without metal or mineral filling, etc	⇒Cancel; see item A-NEW
37280	Thresholds or Sills , door, aluminum, or aluminum and rubber or flexible plastic combined, etc	⇒Cancel; see item A-NEW
37282	NOTE—⇒Cancel; see item B-NEW.	

SUBJECT 5

Proposed Classification Provisions—Continued

Item	Description	Class
	BUILDING METALWORK GROUP: subject to item 35600	
37330	Ventilator Tops , chimney or roof, steel, SU, etc	⇒Cancel; see item A-NEW
37340	Ventilators , chimney or roof, NOI, not chimney caps nor cowls, iron or steel	⇒Cancel; see item A-NEW
37350	Ventilators , chimney or roof, NOI, not chimney caps nor cowls, metal, NOI, etc	⇒Cancel; see item A-NEW
37360	Ventilators , foundation, cast aluminum alloy, etc	⇒Cancel; see item A-NEW
⇒A-NEW	Building Metalwork , see Note, item B-NEW, viz.: Area Walls (Window Wells) , in packages; Bars , glass setting, in boxes or crates; Braces or Bridging , joist or stringer, in packages; Building Corners or Shields (Covers for weatherboard or lap siding corner angles), in boxes; Building Metalwork or Sheet Metalwork , NOI, in packages, see Note, item C-NEW; Capitals, Cornice Brackets or Cornice Ornaments , sheet metal, in boxes or crates; Capping , roof, in packages; Channel Sets , double-hung window sash, in boxes; Chimney Caps or Cowls , in boxes or crates; Chimney Flue Smoke or Ventilating Deflectors , in boxes or crates; Chutes , laundry, linen or trash, in packages; Cresting , roof, NOI, in boxes or crates; Finials , roof, NOI, in boxes or crates; Frames , floor, sidewalk or vault light, in packages, see Note, item C-NEW; Grilles , door, in boxes; Guards or Grilles , door, window or skylight, NOI, in boxes or crates; Gussets (Door Corners) , in boxes; Hangers , eave trough or conductor pipe, in boxes or crates; Panels , grille or lattice type, in boxes; Panels , window ventilating or shade, in boxes; Pockets , wall (Recesses , folding bench and table), in boxes or crates; Sash Mullions , in packages;	

SUBJECT 5

Proposed Classification Provisions—Continued

Item	Description	Class
BUILDING METALWORK GROUP: subject to item 35600		
Building Metalwork , see Note, item B-NEW, viz.: subject to item A-NEW		
Skylight Frames or Mounting Curbs , combined or not combined with Ventilators , in boxes or crates;		
Stair Treads or Risers , NOI, in packages;		
Thresholds or Sills , door, in boxes;		
Ventilators or Ventilator Tops , in boxes or crates;		
Subject to Item 170 and having a density in pounds per cubic foot of:		
Sub 1	Less than 1	400
Sub 2	1 but less than 2	300
Sub 3	2 but less than 4	250
Sub 4	4 but less than 6	175
Sub 5	6 but less than 8	125
Sub 6	8 but less than 10	100
Sub 7	10 but less than 12	92.5
Sub 8	12 but less than 15	85
Sub 9	15 but less than 22.5	70
Sub 10	22.5 but less than 30	65
Sub 11	30 but less than 35	60
Sub 12	35 but less than 50	55
Sub 13	50 or greater	50
⇒B-NEW	NOTE—Also applies on accessories necessary for installation.	
⇒C-NEW	NOTE—Articles tendered for shipment on lift truck skids, pallets or platforms must be securely fastened to and must not overhang the edges of the lift truck skid, pallet or platform deck. Exposed surfaces and edges must be protected by packing forms or other packaging materials so as to withstand the normal rigors of the less-than-truckload environment.	

THIS SPACE INTENTIONALLY LEFT BLANK

SUBJECT 5

Proposed Classification Provisions—Concluded

Item	Description	Class
	HARDWARE GROUP: subject to item 92900	
95190	Hardware, viz.: Clamps, Clips, Fasteners, or Latches, NOI, in boxes or Package 2518; [Other Articles Listed—No Change.] Subject to Item 170 and having a density in pounds per cubic foot of:	
Sub 1	Less than 1	400
Sub 2	1 but less than 2	300
Sub 3	2 but less than 4	250
Sub 4	4 but less than 6	175
Sub 5	6 but less than 8	125
Sub 6	8 but less than 10	100
Sub 7	10 but less than 12	92.5
Sub 8	12 but less than 15	85
Sub 9	15 but less than 22.5	70
Sub 10	22.5 but less than 30	65
Sub 11	30 but less than 35	60
Sub 12	35 but less than 50	55
Sub 13	50 or greater	50
95191	NOTE—No change.	
95192	NOTE—No change.	
95193	NOTE—No change.	

Analysis

Introduction

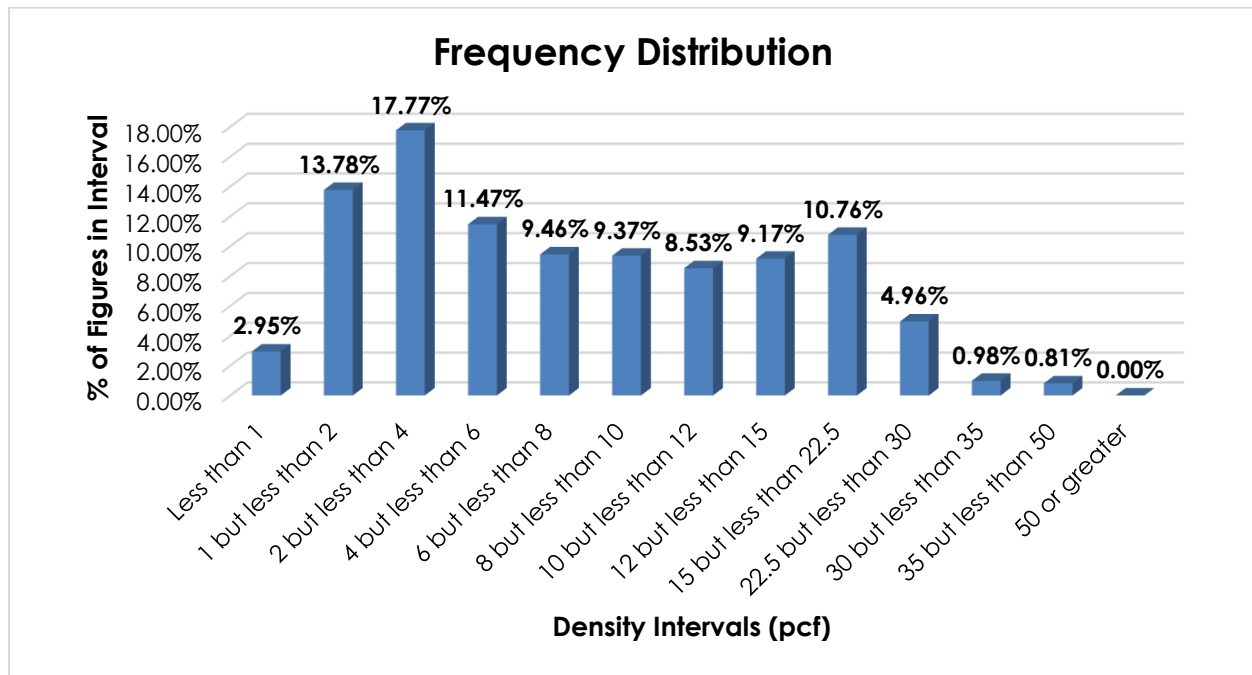
There are numerous items subject to the Building Metalwork Group that name particular types of building metalwork, and these provisions can be difficult to interpret, apply, or verify. The transportation characteristics below relate to the items subject to the Building Metalwork Group, as shown in the Present Classification Provisions herein.

Transportation Characteristics

Density—The information of record includes 42,624 density observations obtained from the FCDC’s Density Study¹. The densities range from 0.11 to 40.46 pcf, with an overall average density of 8.86 pcf. As shown in the graph on the following page, the densities are distributed throughout the range, with a distinct peak at the 2 but less than 4 pcf interval.

¹ The Density Study is part of an ongoing effort by the FCDC to collect information on actual shipments across all product categories handled by the LTL industry. Carriers that choose to participate in the Study periodically submit shipment data captured through their respective freight auditing programs. The FCDC uses verifiable data points, identified by NMFC item, that include the weight and the dimensions and/or cube of the shipping unit.

SUBJECT 5



Handling, Stowability, and Liability—There have been no reports of unusual or significant handling, stowability, or liability issues.

Conclusion

Based on the foregoing analysis, numerous items in the Building Metalwork Group, as shown in the Proposed Classification Provisions herein, would be canceled with reference to a new item, naming Building Metalwork, which would provide the FCDC's 13-subprovision density scale², and a "viz." format. Notes, items 35932, 36842, and 37282 would be canceled and reestablished as two new Notes attendant to the new item to clarify packaging requirements and the application of the articles in the "viz." Additionally, two Notes would be canceled with no further application.

Concurrently, item 36150 would be canceled with reference to full-scale, density-based provisions of item 95190¹³ and item 36590 would be canceled with reference to item 34780.

The FCDC's Packaging Development Manager has reviewed the proposed minimum packaging requirements and determined they are appropriate for the LTL environment.

² The FCDC's standard 13-subprovision density scale includes reference to Item (Rule) 170, the inadvertence clause.