

SUBJECT 6

SUBJECT 6: Evergreens, Decorative, Cut

Re: Evergreens, Decorative, Cut

Contact: Amber Parker

FCDC@nmfta.org

Proponent: Freight Classification Development Council

Quick View

The Quick View feature is not intended to replace contextual information within this document. To understand the potential impact of the recommended changes shown here, please read the full proposal.

Subject 6: Evergreens, Decorative, Cut

**Quick View:** Four items related to decorative evergreens are canceled with reference to item 56040.

- “Viz.” listing in item 56040 amended
- New Note attendant to item 56040 established
- Generic heading, item 63650, canceled with no further application

**Transportation Characteristics Present:**

- Handling ☐Yes ☒No   Stowability ☐Yes ☒No   Liability ☐Yes ☒No   Density ☒Yes ☐No

**Provisions based on:**

- FCDC’s 13-subprovision density scale

SUBJECT 6

Present Classification Provisions

Item	Description	Class
	<b>DECORATIONS GROUP:</b> subject to item 55750	
56040*	<b>Flowers, Foliage, Grasses, Leaves, Plants, Bushes, Trees, Vines or Branches, Arrangements, Designs, Sprays or Wreaths,</b> see Note, item 56041, artificial or natural, other than live plants, see Note, item 56042, <b>viz.:</b> <b>Arrangements,</b> NOI, in boxes; <b>Berries, Pips or Stamens,</b> clay, cement or plaster and twine or wire combined, in boxes; <b>Branches,</b> Christmas tree, plastic, with steel wire cores or centers, in boxes; <b>Branches,</b> NOI, in boxes; <b>Bushes,</b> NOI, in boxes; <b>Cemetery Memorial Sets,</b> consisting of hollow glass blocks with wooden bases and detached metal legs, see Note, item 56043, in boxes; <b>Cereal Stalks,</b> dried, not manufactured or manufactured into clusters, shapes or sheaves, in boxes; <b>Christmas Trees,</b> artificial, NOI, with or without stands, in fiberboard tubes see Note, item 56044, or in boxes; <b>Designs,</b> NOI, in boxes; <b>Flowers,</b> NOI, in boxes; <b>Foliage,</b> NOI, in boxes; <b>Grasses,</b> NOI, in boxes; <b>Leaves,</b> NOI, in boxes; <b>Plants,</b> NOI, in boxes; <b>Roots,</b> decorative, in packages; <b>Roots,</b> driftwood, in packages; <b>Sprays,</b> NOI, in boxes; <b>Trees,</b> NOI, in boxes;	

THIS SPACE INTENTIONALLY LEFT BLANK

## SUBJECT 6

Present Classification Provisions—Continued

Item	Description	Class
<b>DECORATIONS GROUP:</b> subject to item 55750		
<b>Flowers, Foliage, Grasses, Leaves, Plants, Bushes, Trees, Vines or Branches, Arrangements, Designs, Sprays or Wreaths, viz.:</b> subject to item 56040		
<b>Wreaths,</b> NOI, in boxes;		
Subject to Item 170 and having a density in pounds per cubic foot of:		
Sub 1	Less than 1 .....	400
Sub 2	1 but less than 2.....	300
Sub 3	2 but less than 4.....	250
Sub 4	4 but less than 6.....	175
Sub 5	6 but less than 8.....	125
Sub 6	8 but less than 10.....	100
Sub 7	10 but less than 12.....	92.5
Sub 8	12 but less than 15.....	85
Sub 9	15 but less than 22.5.....	70
Sub 10	22.5 but less than 30.....	65
Sub 11	30 but less than 35.....	60
Sub 12	35 but less than 50.....	55
Sub 13	50 or greater .....	50
56041	NOTE—Not Involved.	
56042	NOTE—Not Involved.	
56043	NOTE—Not Involved.	
56044	NOTE—Not Involved.	
63650	<b>EVERGREENS, DECORATIVE, CUT:</b> prepaid	
63670	<b>Christmas Trees,</b> NOI .....	85
63690	<b>Evergreens,</b> decorative, cut, NOI, other than in the form of designs, wreaths or sprays:	
Sub 1	In packages not machine pressed .....	100
Sub 2	In machine pressed bales.....	85
63710	<b>Ground Pine or Evergreen Moss,</b> fresh or preserved, in packages .....	100
63730	<b>Holly, Mistletoe or Holly Wreaths,</b> in bales, boxes, crates or drums, or in boxes strapped in bundles.....	300

\* Published in Supplement 1 to NMF 100-AY, effective July 19, 2025.

## SUBJECT 6

Proposed Classification Provisions

Item	Description	Class
56040	<p><b>DECORATIONS GROUP:</b> subject to item 55750</p> <p><b>Flowers, Foliage, Grasses, Leaves, Plants, Bushes, Trees, Vines or Branches, Arrangements, Designs, Sprays or Wreaths</b>, see Note, item 56041, artificial or natural, other than live plants, see Note, item 56042, <b>viz.:</b></p> <p><b>Arrangements</b>, NOI, in boxes;</p> <p><b>Berries, Pips or Stamens</b>, clay, cement or plaster and twine or wire combined, in boxes;</p> <p><b>Branches</b>, Christmas tree, plastic, with steel wire cores or centers, in boxes;</p> <p><b>Branches</b>, NOI, in boxes;</p> <p><b>Bushes</b>, NOI, in boxes;</p> <p><b>Cemetery Memorial Sets</b>, consisting of hollow glass blocks with wooden bases and detached metal legs, see Note, item 56043, in boxes;</p> <p><b>Cereal Stalks</b>, dried, not manufactured or manufactured into clusters, shapes or sheaves, in boxes;</p> <p><b>Christmas Trees</b>, artificial, NOI, with or without stands, in fiberboard tubes see Note, item 56044, or in boxes;</p> <p>⇒ <b>Christmas Trees</b>, cut, NOI, in packages;</p> <p><b>Designs</b>, NOI, in boxes;</p> <p>⇒ <b>Evergreens</b>, decorative, cut, NOI, in packages;</p> <p><b>Flowers</b>, NOI, in boxes;</p> <p><b>Foliage</b>, NOI, in boxes;</p> <p><b>Grasses</b>, NOI, in boxes;</p> <p>⇒ <b>Ground Pine or Evergreen Moss</b>, fresh, see Note, item NEW; or preserved; in packages;</p> <p><b>Leaves</b>, NOI, in boxes;</p> <p><b>Plants</b>, NOI, in boxes;</p> <p><b>Roots</b>, decorative, in packages;</p> <p><b>Roots</b>, driftwood, in packages;</p> <p><b>Sprays</b>, NOI, in boxes;</p> <p><b>Trees</b>, NOI, in boxes or crates;</p>	

## SUBJECT 6

Proposed Classification Provisions—Concluded

Item	Description	Class
<b>DECORATIONS GROUP:</b> subject to item 55750		
<b>Flowers, Foliage, Grasses, Leaves, Plants, Bushes, Trees, Vines or Branches, Arrangements, Designs, Sprays or Wreaths, viz.:</b> subject to item 56040		
<b>Wreaths, NOI, ⇨</b> in bales, boxes, bundles or crates;		
Subject to Item 170 and having a density in pounds per cubic foot of:		
Sub 1	Less than 1 .....	400
Sub 2	1 but less than 2.....	300
Sub 3	2 but less than 4.....	250
Sub 4	4 but less than 6.....	175
Sub 5	6 but less than 8.....	125
Sub 6	8 but less than 10.....	100
Sub 7	10 but less than 12.....	92.5
Sub 8	12 but less than 15.....	85
Sub 9	15 but less than 22.5.....	70
Sub 10	22.5 but less than 30.....	65
Sub 11	30 but less than 35.....	60
Sub 12	35 but less than 50.....	55
Sub 13	50 or greater.....	50
56041	NOTE—No Change.	
56042	NOTE—No Change.	
56043	NOTE—No Change.	
56044	NOTE—No Change.	
⇨NEW	NOTE—Does not apply on fresh ground pine or evergreen moss intended for planting.	
63650	<b>EVERGREENS, DECORATIVE, CUT, etc</b> .....	⇨Cancel; no further application
63670	<b>Christmas Trees, NOI</b> .....	⇨Cancel; see item 56040
63690	<b>Evergreens, decorative, cut, NOI, other than in the form of designs, wreaths or sprays, etc</b> .....	⇨Cancel; see item 56040
63710	<b>Ground Pine or Evergreen Moss, fresh or preserved, etc</b> .....	⇨Cancel; see item 56040
63730	<b>Holly, Mistletoe or Holly Wreaths, etc</b> .....	⇨Cancel; see item 56040

SUBJECT 6

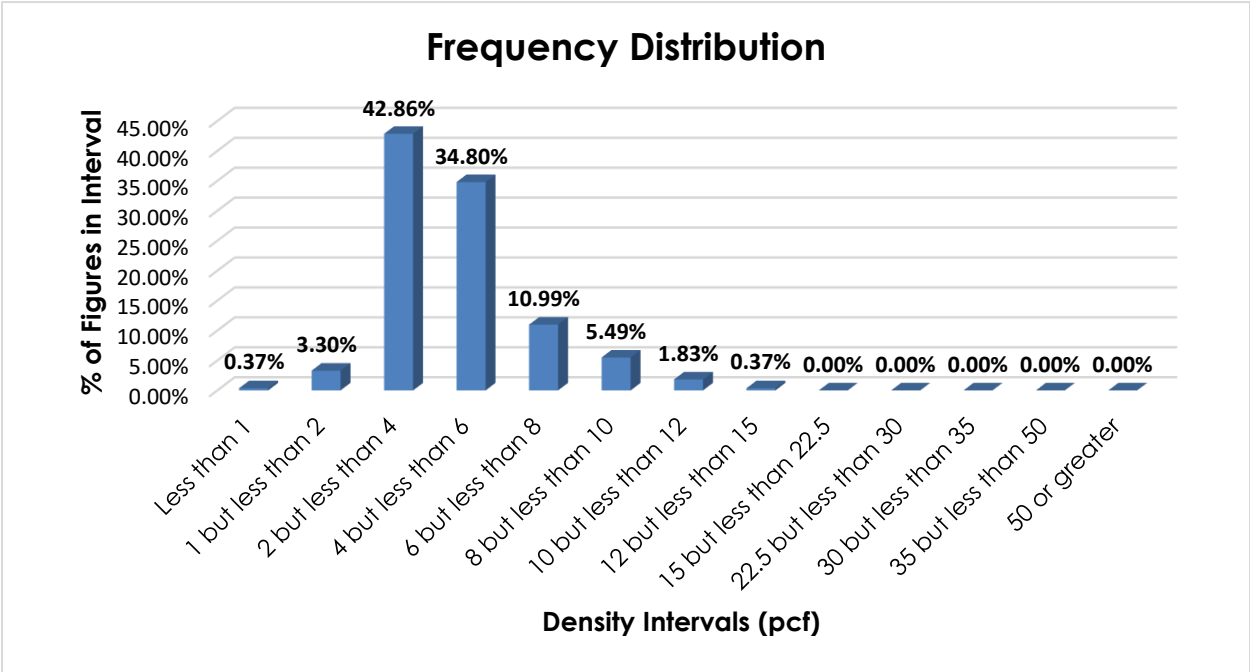
Analysis

Introduction

Four items subject to the Evergreens, Decorative, Cut generic heading, as shown in the Present Classification Provisions herein, name particular types of evergreen commodities, and these provisions can be difficult to interpret, apply or verify. The transportation characteristics below relate to items 63670, 63690, 63710, and 63730.

Transportation Characteristics

**Density**—The information of record includes 273 density observations obtained from the FCDC’s Density Study<sup>10</sup>. The densities range from 0.46 to 12.71 pcf, with an overall average density of 4.52 pcf. As shown in the graph below, the densities are right skewed with a distinct peak in the 2 but less than 4 pcf interval.



**Handling, Stowability and Liability**—There have been no reports of unusual or significant handling, stowability or liability issues.

<sup>10</sup> The Density Study is part of an ongoing effort by the FCDC to collect information on actual shipments across all product categories handled by the LTL industry. Carriers that choose to participate in the Study periodically submit shipment data captured through their respective freight auditing programs. The FCDC uses verifiable data points, identified by NMFC item, that include the weight and the dimensions and/or cube of the shipping unit.

**SUBJECT 6****Conclusion**

Based on the foregoing analysis, items 63670, 63690, 63710, and 63730 would be canceled with reference to the full-scale, density-based provisions of item 56040<sup>11</sup>. Additionally, this proposal would amend the "viz." listing in item 56040 in the interest of clarification. A new Note attendant to item 56040 would also be established to clarify the application of the articles listed in the "viz."

Furthermore, the Evergreens, Decorative, Cut generic heading, item 63650, would be canceled with no further application.

The FCDC's Packaging Development Manager has reviewed the proposed minimum packaging requirements and determined they are appropriate for the LTL environment.

---

<sup>11</sup> Item 56040 provides the FCDC's standard 13-subprovision density scale, which includes reference to Item (Rule) 170, the inadvertence clause.