

SUBJECT 4

SUBJECT 4: Agricultural Implements, Hand, Group

Re: Agricultural Implements, Hand, Group

Contact: Lanae Peterson

FCDC@nmfta.org

Proponent: Freight Classification Development Council

Quick View

The Quick View feature is not intended to replace contextual information within this document. To understand the potential impact of the recommended changes shown here, please read the full proposal.

Subject 4: Agricultural Implements, Hand, Group

Quick View: Eighteen items in the Agricultural Implements, Hand, Group are canceled with reference to item 186600.

- “Viz.” listing in item 186600 amended
- Item 7040 canceled with reference to item 63825
- Agricultural Implements, Hand, Group, item 6060, canceled with no further application
- Note, item 6087 canceled with no further application

Transportation Characteristics Present:

- Handling ☐Yes ☒No Stowability ☐Yes ☒No Liability ☐Yes ☒No Density ☒Yes ☐No

Provisions based on:

- FCDC’s 13-subprovision density scale


SUBJECT 4

Present Classification Provisions

Item	Description	Class
6060	AGRICULTURAL IMPLEMENTS, HAND, GROUP: Articles consist of Agricultural Implements, hand, or Parts Named, as described in items subject to this grouping.	
6080	Agricultural Implement Parts , hand, NOI, in packages:	
Sub 1	Iron or steel	85
Sub 2	Wooden:	
Sub 3	Finished	100
Sub 4	In the white	60
6085	Assortments , tool, consisting of hand agricultural implements and shovels, spades or scoops, steel or steel and wood combined, with or without other hand tools, see Note, item 6087, in boxes.....	77.5
6087	NOTE—The weight of hand agricultural implements or hand tools other than agricultural implements classed Class 85 or higher must not exceed 10 percent of weight upon which charges are assessed.	
6100	Blades , scythe, in boxes	70
7040	Cleaning, Grading or Separating Machines (Fanning Mills) , grain or seed:	
Sub 1	Completely KD, in boxes or crates	85
Sub 2	SU or partially taken apart:	
Sub 3	Loose or on skids	200
Sub 4	Drums detached, in boxes or crates	150
Sub 5	Drums, dust hoods or wind chutes, fan boxes and sieves removed and secured within main frame, in boxes or crates	100
7060	Cultivators , not wheeled:	
Sub 1	In packages, other than Package 2361	77.5
Sub 2	In Package 2361	70
7080	Cultivators , wheeled:	
Sub 1	SU, loose	200
Sub 2	SU, in boxes or crates.....	150
Sub 3	KD, in packages.....	77.5
8040	Cutters , weed, in packages	85
8080	Drills or Seeders , wheeled:	
Sub 1	SU, loose	200
Sub 2	SU, in boxes or crates.....	150
Sub 3	KD, in packages.....	77.5
8090	Edgers , turf, in packages	85
8120	Forks , metal tined:	
Sub 1	In packages, other than Package 2361	77.5
Sub 2	In Package 2361	70
8190	Heads , fork, hoe, manure hook, potato hook or rake:	
Sub 1	In bundles	77.5
Sub 2	In boxes, crates or drums	60

SUBJECT 4

Present Classification Provisions—Continued

Item	Description	Class
	AGRICULTURAL IMPLEMENTS, HAND, GROUP: subject to item 6060	
8210	Hoes , NOI, not wheeled:	
Sub 1	In packages, other than Package 2361	77.5
Sub 2	In Package 2361	70
8390	Planters , not wheeled:	
Sub 1	In boxes or crates	85
Sub 2	In bundles	100
8410	Plows , wheeled:	
Sub 1	SU, in boxes or crates.....	150
Sub 2	SU, loose	200
Sub 3	KD, in packages.....	77.5
8430	Pruners , tree, NOI, other than power operated:	
Sub 1	In packages other than boxes	200
Sub 2	In boxes	85
8490	Rollers , garden or lawn, loose or in packages.....	70
8530	Seeders , not wheeled, in boxes or crates	85
8535	Sets , garden hand tool, consisting of trowels, spading forks, cultivators and dibbles, in cartons in boxes	77.5
8740	Weeders , not wheeled, in packages	77.5
63825*	 Exhibits , museum, Articles of Antiquity or Antiques , see Note, item 63826.....	0
63826	NOTE—Not Involved.	

THIS SPACE INTENTIONALLY LEFT BLANK

SUBJECT 4

Present Classification Provisions—Concluded

Item	Description	Class
	TOOLS, OR PARTS NAMED, GROUP: subject to item 183500	
186600*	Tools, or Parts Named, viz.: Tools , NOI, hand, other than power, in boxes; Tools , NOI, hand, power, see Note, item 186606, in boxes or crates; [Other Articles Listed—Not Involved.] Subject to Item 170 and having a density in pounds per cubic foot of:	
Sub 1	Less than 1	400
Sub 2	1 but less than 2.....	300
Sub 3	2 but less than 4.....	250
Sub 4	4 but less than 6.....	175
Sub 5	6 but less than 8.....	125
Sub 6	8 but less than 10.....	100
Sub 7	10 but less than 12.....	92.5
Sub 8	12 but less than 15.....	85
Sub 9	15 but less than 22.5.....	70
Sub 10	22.5 but less than 30.....	65
Sub 11	30 but less than 35.....	60
Sub 12	35 but less than 50.....	55
Sub 13	50 or greater.....	50
186601	NOTE—Not Involved.	
186602	NOTE—Not Involved.	
186603	NOTE—Not Involved.	
186604	NOTE—Not Involved.	
186605	NOTE—Not Involved.	
186606	NOTE—Not Involved.	

* Published in Supplement 1 to NMF 100-AY, effective July 19, 2025.

SUBJECT 4

Proposed Classification Provisions

Item	Description	Class
6060	AGRICULTURAL IMPLEMENTS, HAND, GROUP , etc	⇒Cancel; no further application
6080	Agricultural Implement Parts , hand, NOI, etc,.....	⇒Cancel; see item 186600
6085	Assortments , tool, consisting of hand agricultural implements and shovels, spades or scoops, steel or steel and wood combined, with or without other hand tools, etc	⇒Cancel; see item 186600
6087	NOTE—⇒Cancel; no further application.	
6100	Blades , scythe, etc	⇒Cancel; see item 186600
7040	Cleaning, Grading or Separating Machines (Fanning Mills) , grain or seed, etc	⇒Cancel; see item 63825
7060	Cultivators , not wheeled, etc	⇒Cancel; see item 186600
7080	Cultivators , wheeled, etc	⇒Cancel; see item 186600
8040	Cutters , weed, etc.....	⇒Cancel; see item 186600
8080	Drills or Seeders , wheeled, etc.....	⇒Cancel; see item 186600
8090	Edgers , turf, etc.....	⇒Cancel; see item 186600
8120	Forks , metal tined, etc	⇒Cancel; see item 186600
8190	Heads , fork, hoe, manure hook, potato hook or rake, etc	⇒Cancel; see item 186600
8210	Hoes , NOI, not wheeled, etc	⇒Cancel; see item 186600
8390	Planters , not wheeled, etc	⇒Cancel; see item 186600
8410	Plows , wheeled, etc	⇒Cancel; see item 186600
8430	Pruners , tree, NOI, other than power operated, etc	⇒Cancel; see item 186600
8490	Rollers , garden or lawn, etc	⇒Cancel; see item 186600
8530	Seeders , not wheeled, etc	⇒Cancel; see item 186600
8535	Sets , garden hand tool, consisting of trowels, spading forks, cultivators and dibbles, etc	⇒Cancel; see item 186600

SUBJECT 4

Proposed Classification Provisions—Concluded

Item	Description	Class
	AGRICULTURAL IMPLEMENTS, HAND, GROUP: subject to item 6060	
8740	Weeders , not wheeled, etc.....	⇒Cancel; see item 186600
63825	👉 Exhibits , museum, Articles of Antiquity or Antiques , see Note, item 63826.....	0
63826	NOTE—No Change.	
	TOOLS, OR PARTS NAMED, GROUP: subject to item 183500	
186600	Tools, or Parts Named, viz.: ⇒ Agricultural Implements or Parts thereof , hand, NOI, in packages; Tools , NOI, hand, other than power, in boxes; Tools , NOI, hand, power, see Note, item 186606, in boxes or crates; [Other Articles Listed—No Change.] Subject to Item 170 and having a density in pounds per cubic foot of:	
Sub 1	Less than 1	400
Sub 2	1 but less than 2.....	300
Sub 3	2 but less than 4.....	250
Sub 4	4 but less than 6.....	175
Sub 5	6 but less than 8.....	125
Sub 6	8 but less than 10.....	100
Sub 7	10 but less than 12.....	92.5
Sub 8	12 but less than 15.....	85
Sub 9	15 but less than 22.5.....	70
Sub 10	22.5 but less than 30.....	65
Sub 11	30 but less than 35.....	60
Sub 12	35 but less than 50.....	55
Sub 13	50 or greater	50
186601	NOTE—No Change.	
186602	NOTE—No Change.	
186603	NOTE—No Change.	
186604	NOTE—No Change.	
186605	NOTE—No Change.	
186606	NOTE—No Change.	

SUBJECT 4

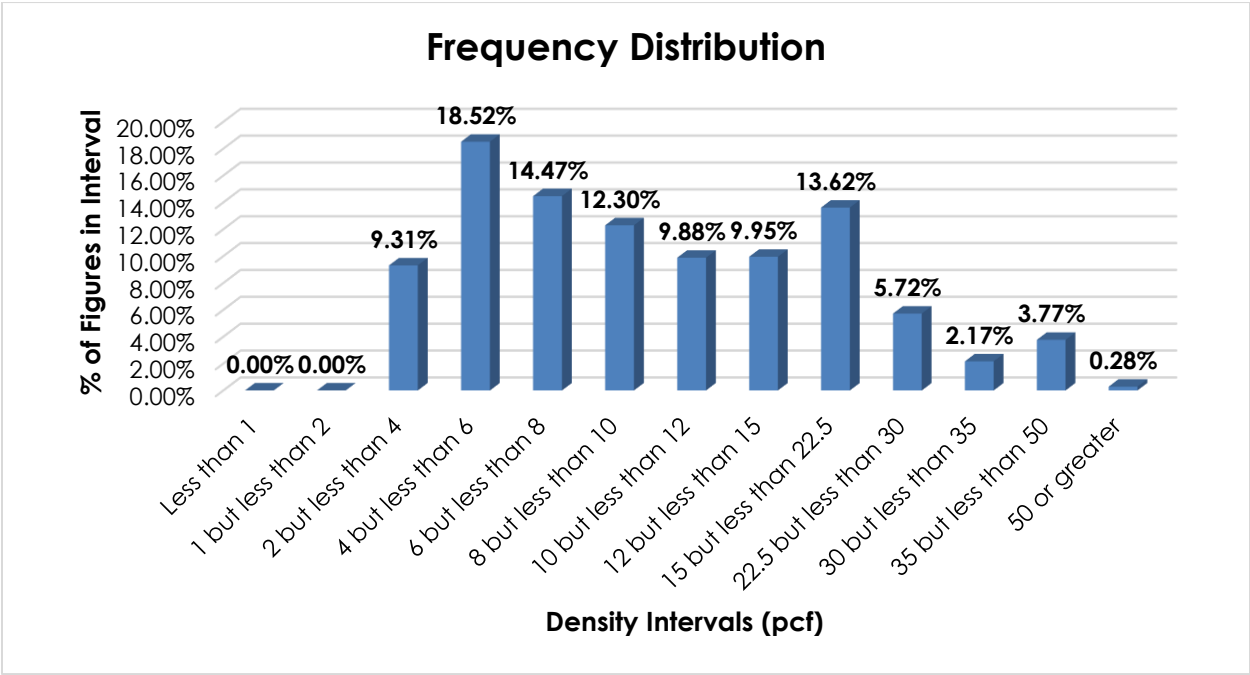
Analysis

Introduction

All the items in the Agricultural Implements, Hand, Group name particular types of hand tools used in agricultural settings, and these provisions can be difficult to interpret, apply, or verify. The transportation characteristics below relate to items subject to the Agricultural Implements, Hand, Group, as shown in the Present Classification Provisions herein.

Transportation Characteristics

Density—The information of record includes 2,813 density observations obtained from the FCDC’s Density Study⁶. The densities range from 2.90 to 50.12 pcf, with an average density of 12.16 pcf. As shown in the graph below, the densities are distributed throughout the range.



Handling, Stowability, and Liability—There have been no reports of unusual or significant handling, stowability, or liability issues.

⁶ The Density Study is part of an ongoing effort by the FCDC to collect information on actual shipments across all product categories handled by the LTL industry. Carriers that choose to participate in the Study periodically submit shipment data captured through their respective freight auditing programs. The FCDC uses verifiable data points, identified by NMFC item, that include the weight and the dimensions and/or cube of the shipping unit.

SUBJECT 4**Conclusion**

Based on the foregoing analysis, eighteen items subject to the Agricultural Implements, Hand, Group would be canceled with reference to the full-scale, density-based provisions of item 186600⁷. Concurrently, this proposal would amend the "viz." listing in item 186600 to name "Agricultural Implements or Parts thereof, hand, NOI."

Additionally, the Agricultural Implements, Hand, Group, item 6060 and Note, item 6087, would be canceled with no further application, and item 7040 would be canceled with reference to item 63825.

The FCDC's Packaging Development Manager has reviewed the proposed minimum packaging requirements and determined they are appropriate for the LTL environment.

⁷ Item 186600 provides the FCDC's standard 13-subprovision density scale, which includes reference to Item (Rule) 170, the inadvertence clause.