

SUBJECT 3

SUBJECT 3: Metals Group

Re: Metals Group

Contact: Lanae Peterson

FCDC@nmfta.org

Proponent: Freight Classification Development Council

Quick View

The Quick View feature is not intended to replace contextual information within this document. To understand the potential impact of the recommended changes shown here, please read the full proposal.

Subject 3: Metals Group

Quick View: Fifty-one items in the Metals Group are canceled with reference to a new item, which would provide a “viz.” format, and classes based on the FCDC’s 13-subprovision density scale.

- Ten Notes canceled with no further application
- Note, item 136612, canceled and reestablished attendant to the new item

Transportation Characteristics Present:

- Handling ☐Yes ☒No Stowability ☐Yes ☒No Liability ☐Yes ☒No Density ☒Yes ☐No

Provisions based on:

- FCDC’s 13-subprovision density scale

SUBJECT 3

Present Classification Provisions

Item	Description	Class
	METALS GROUP: subject to item 135300	
135320	Aluminum-nickel , crushed or powdered, in bulk in steel drums70	
135335	Anodes , cadmium, cast, in packages65	
135340	Antimony, Britannia, Pewter or White Metalware , NOI, in boxes or drums..... 100	
135360	Antimony Metal , in cakes or slabs, in packages.....60	
135400	Babbitt Metal (white metal alloys containing in excess of 10 percent tin), bars, pigs, slabs or scraps, in packages60	
135420	Bars, Pigs or Sheets , britannia metal, in boxes or drums70	
135440	Beryllium Bronze or Beryllium Copper, or Beryllium Bronze or Beryllium Copper Articles , NOI, containing 0.5 percent to 2 percent beryllium, see Note, item 135441, in boxes, crates or drums, see Note, item 135442:	
Sub 1	Actual value not exceeding \$5.00 per pound, see Note, item 13544360	
Sub 2	Actual value exceeding \$5.00 per pound but not exceeding \$30.00 per pound, see Note, item 135443.....85	
Sub 3	Actual value exceeding \$30.00 per pound, see Note, item 135443..... 100	
135441	NOTE—Where beryllium content exceeds 2 percent, item 136500, naming 'Metal Alloys, NOI,' will apply.	
135442	NOTE—Plate, sheet or strip, 38 gauge or thicker (0.004 inch or thicker), may be shipped in bundles, subject to the Note, item 106722.	
135443	NOTE—Shipper must certify on shipping orders and bills of lading at time of shipment the actual value per pound of the property or the value group embracing the actual value per pound of the property. If the shipper fails to so certify the actual value, shipment will not be accepted, but if the shipment is inadvertently accepted, charges will initially be assessed on the basis of the class for the highest valuation provided. Upon proof of lower actual value, freight charges will be adjusted accordingly.	
135460	Blanks , britannia metal, NOI, see Note, item 135461, in boxes, having a density of 12 pounds or greater per cubic foot, see Note, item 13546285	
135461	NOTE—Applies only on articles manufactured solely by a blanking process.	
135462	NOTE—Density must be shown by shipper on shipping orders and bills of lading at time of shipment. If density is not shown and shipment is inadvertently accepted, class will initially be assessed under the provisions of item 135340, naming 'Antimony, Britannia, Pewter or White Metalware, NOI.' Upon satisfactory proof of actual density, class will be adjusted accordingly.	

SUBJECT 3

Present Classification Provisions—Continued

Item	Description	Class
METALS GROUP: subject to item 135300		
135500	Cable , scrap, lead covered copper, consisting of lead covered copper cable worn out or otherwise rendered unfit for use, having value only for remelting purposes, in packages.....	55
135530	Calcium , metallic, in boxes	100
135550	Castings , NOI, babbitt or white metal, in boxes, crates or drums	100
135560	Castings , NOI, tin alloy, in boxes, crates or drums	100
135580	Chrome Aluminum , in boxes or drums.....	100
135600	Chrome Tungsten , in boxes or drums.....	100
135625	Disks, Circles, Sheet or Strip , pewter, in boxes	65
135670	Dross or Skimmings , solder, in bags, boxes or drums.....	55
135680	Dross or Skimmings , type metal, in bags, boxes or drums	55
135700	Dross or Sludge , cadmium, in bags, boxes or drums.....	70
135720	Electrotype Base Metal , in boxes or drums.....	55
135780	Gold Plated Ware , not on silver, NOI, in boxes.....	200
135782	Ferro-cobalt-nickel alloys, viz.: Articles , NOI, Sheet, Strip or Tubing , in boxes; or Wire , in packages.....	100
135800	Ingots , beryllium-aluminum, in boxes:	
Sub 1	Beryllium content exceeding 2 percent	100
Sub 2	Beryllium content not exceeding 2 percent	85
135850	Lead Base Alloys , NOI, tin content not exceeding 10 percent:	
Sub 1	Bars, pigs or slabs	55
Sub 2	Other than bars, pigs or slabs, in packages	60
135890	Manganese-copper , in drums.....	70
135910	Manganese Metal , in bags, boxes or drums	60
135930	Manganese-silicon , in drums	70
135950	Metal , thermostat:	
Sub 1	Articles, NOI, in boxes.....	100
Sub 2	Sheet or strip, in boxes.....	85
135990	Nickel Magnesium Alloy or Nickel Magnesium Silicon Alloy, viz.: Ingots, Lumps or Granules , in packages.....	65
136030	Powder , ferro-nickel, in steel drums.....	60
136040	Quicksilver (Metallic Mercury) , in inner containers in boxes	200
136060	Residue , consisting of copper, lead, tin and other non-ferrous metals, tin content not to exceed 50 percent, having value for re-melting purposes only, in boxes or drums.....	55
136080	Residue , zinc lead, in drums	55
136100	Scrap , antimony metal, in packages	60
136120	Scrap , lead base alloy, tin content not exceeding 10 percent, in packages	55
136140	Scrap , NOI, cadmium, in bags, boxes or drums	85

SUBJECT 3

Present Classification Provisions—Continued

Item	Description	Class
	METALS GROUP: subject to item 135300	
136160	Scrap , silver plated metal, not on silver, in boxes or drums, or in machine pressed bales wrapped in burlap 100	100
136200	Scrap , white metal alloy, NOI, in packages.....55	55
136210	Sheet Metal , silver plated, not on silver, NOI, in boxes 150	150
136240	Silicon (metal containing not less than 96 percent nor more than 99 percent of silica), in bags, boxes or drums50	50
136260	Silicon Copper , in drums70	70
136340	Silver Plated Ware or Pewter Plated Ware , not on silver or pewter, NOI:	
Sub 1	Not exceeding one inch (2.54 centimeters) in height, in boxes..... 100	100
Sub 2	Exceeding one inch (2.54 centimeters) in height, in boxes 150	150
136430	Solder , braziers', NOI, other than with gold, palladium or silver content, in boxes or drums60	60
136440	Solder , NOI, other than with gold, palladium or silver content:	
Sub 1	Tin content exceeding 10 percent, in packages, see Note, item 13644160	60
Sub 2	Tin content not exceeding 10 percent:	
Sub 3	Bars, pigs or slabs55	55
Sub 4	Other than bars, pigs or slabs, in packages, see Note, item 13644160	60
136441	NOTE—Outer shipping package may include one applicator brush for each inner container of solder. Weight of applicator brushes not to exceed 5 percent of the weight of the shipping package.	
136450	Speiss (smelter by-product, containing cobalt-nickel), in bags or drums50	50
136460	Tellurium Metal , in boxes or drums 100	100
136480	Terne Metal (alloy of lead and tin), bars, pigs, slabs or scraps, in packages60	60
136490	Turnings , aluminum and magnesium, mixed, see Note, item 136492, in boxes or drums70	70
136492	NOTE—Applies only on other than scrap turnings. The content of either kind of turning must be not less than 25 percent by weight of the mixture.	
136500	Metal , NOI, or Metal Alloys , NOI:	
	Articles, NOI,	
	Bars,	
	Billets,	
	Blooms,	
	Castings,	
	Forgings,	
	Ingots,	
	Pigs,	
	Plates,	
	Powder,	
	Rings,	

SUBJECT 3

Present Classification Provisions—Continued

Item	Description	Class
	METALS GROUP: subject to item 135300	
	Metal, NOI, or Metal Alloys, NOI: subject to item 136500	
	Rods,	
	Scrap,	
	Sheets,	
	Shot,	
	Sponge,	
	Strip,	
	Welding Rods or Wire,	
	Other Forms or Shapes, NOI, consisting of one piece of metal;	
	See Notes, items 136512, 136514 and 136516, in boxes, crates or drums:	
Sub 1	Released value not exceeding 40 cents per pound	70
Sub 2	Released value exceeding 40 cents per pound, but not exceeding \$1.00 per pound	100
Sub 3	Released value exceeding \$1.00 per pound, but not exceeding \$5.00 per pound	200
Sub 4	If the shipper declines to release each pound in shipment to a value not exceeding \$5.00 per pound, the shipment will not be accepted.	
136512	NOTE—The released value must be entered on shipping order and bill of lading in the following form: "The agreed or declared value of the property is hereby specifically stated by the shipper to be not exceeding _____ per pound."	
	<div>_____ (Shipper's Signature)</div>	
	(Classes herein based on released value have been authorized by the Interstate Commerce Commission by Released Rates Order No. MC-439 of April 7, 1959, and as amended.)	
136514	NOTE—When released to value not exceeding 40 cents per pound, shipments will be accepted loose if weighing each 50 pounds or over, or in bundles weighing each 50 pounds or over.	
136516	NOTE—If the shipper declines or fails to declare the value or agree to a released value in writing the shipment will not be accepted, but if shipment is inadvertently accepted, charges will initially be assessed on basis of the class for the highest valuation provided. Upon proof of the lower actual value, freight charges will be adjusted to the basis of the class or rate applicable in connection with such actual value. In no instance will carriers' liability exceed the highest value for which classes are provided.	

SUBJECT 3

Present Classification Provisions—Concluded

Item	Description	Class
	METALS GROUP: subject to item 135300	
136590	Type Metal , not metal printers' type; or Type Metal Adjusting Alloys ; in packages:	
Sub 1	Tin content not exceeding 10 percent.....	55
Sub 2	Tin content exceeding 10 percent	60
136610	White Metal Alloys , NOI, bars, pigs or slabs, see Note, item 136612, in packages	60
136612	NOTE—Does not apply on alloys containing gold, silver, palladium or platinum.	
136650	Zirconium-manganese-silicon , in bags, boxes or drums	60

Proposed Classification Provisions

Item	Description	Class
	METALS GROUP: subject to item 135300	
135320	Aluminum-nickel , crushed or powdered, etc	⇒Cancel; see item A-NEW
135335	Anodes , cadmium, cast, etc.....	⇒Cancel; see item A-NEW
135340	Antimony, Britannia, Pewter or White Metalware , NOI, etc	⇒Cancel; see item A-NEW
135360	Antimony Metal , in cakes or slabs, etc	⇒Cancel; see item A-NEW
135400	Babbitt Metal (white metal alloys containing in excess of 10 percent tin), bars, pigs, slabs or scraps, etc	⇒Cancel; see item A-NEW
135420	Bars, Pigs or Sheets , britannia metal, etc	⇒Cancel; see item A-NEW
135440	Beryllium Bronze or Beryllium Copper, or Beryllium Bronze or Beryllium Copper Articles , NOI, containing 0.5 percent to 2 percent beryllium, etc.....	⇒Cancel; see item A-NEW
135441	NOTE—⇒Cancel; no further application.	
135442	NOTE—⇒Cancel; no further application.	
135443	NOTE—⇒Cancel; no further application.	
135460	Blanks , britannia metal, NOI, etc	⇒Cancel; see item A-NEW
135461	NOTE—⇒Cancel; no further application.	
135462	NOTE—⇒Cancel; no further application.	

SUBJECT 3

Proposed Classification Provisions—Continued

Item	Description	Class
	METALS GROUP: subject to item 135300	
135500	Cable , scrap, lead covered copper, consisting of lead covered copper cable worn out or otherwise rendered unfit for use, having value only for remelting purposes, etc	⇒ Cancel; see item A-NEW
135530	Calcium , metallic, etc	⇒ Cancel; see item A-NEW
135550	Castings , NOI, babbitt or white metal, etc	⇒ Cancel; see item A-NEW
135560	Castings , NOI, tin alloy, etc	⇒ Cancel; see item A-NEW
135580	Chrome Aluminum , etc	⇒ Cancel; see item A-NEW
135600	Chrome Tungsten , etc.....	⇒ Cancel; see item A-NEW
135625	Disks, Circles, Sheet or Strip , pewter, etc	⇒ Cancel; see item A-NEW
135670	Dross or Skimmings , solder, etc.....	⇒ Cancel; see item A-NEW
135680	Dross or Skimmings , type metal, etc	⇒ Cancel; see item A-NEW
135700	Dross or Sludge , cadmium, etc.....	⇒ Cancel; see item A-NEW
135720	Electrotype Base Metal , etc	⇒ Cancel; see item A-NEW
135780	Gold Plated Ware , not on silver, NOI, etc	⇒ Cancel; see item A-NEW
135782	Ferro-cobalt-nickel alloys, viz.: Articles, NOI, Sheet, Strip or Tubing , in boxes; or Wire , etc	⇒ Cancel; see item A-NEW
135800	Ingots , beryllium-aluminum, etc	⇒ Cancel; see item A-NEW
135850	Lead Base Alloys , NOI, tin content not exceeding 10 percent, etc	⇒ Cancel; see item A-NEW
135890	Manganese-copper , etc	⇒ Cancel; see item A-NEW
135910	Manganese Metal , etc	⇒ Cancel; see item A-NEW
135930	Manganese-silicon , etc.....	⇒ Cancel; see item A-NEW

SUBJECT 3

Proposed Classification Provisions—Continued

Item	Description	Class
	METALS GROUP: subject to item 135300	
135950	Metal , thermostat, etc	⇒Cancel; see item A-NEW
135990	Nickel Magnesium Alloy or Nickel Magnesium Silicon Alloy, viz.: Ingots, Lumps or Granules , etc	⇒Cancel; see item A-NEW
136030	Powder , ferro-nickel, etc	⇒Cancel; see item A-NEW
136040	Quicksilver (Metallic Mercury) , etc	⇒Cancel; see item A-NEW
136060	Residue , consisting of copper, lead, tin and other non-ferrous metals, tin content not to exceed 50 percent, having value for re-melting purposes only, etc	⇒Cancel; see item A-NEW
136080	Residue , zinc lead, etc.....	⇒Cancel; see item A-NEW
136100	Scrap , antimony metal, etc.....	⇒Cancel; see item A-NEW
136120	Scrap , lead base alloy, tin content not exceeding 10 percent, etc	⇒Cancel; see item A-NEW
136140	Scrap , NOI, cadmium, etc.....	⇒Cancel; see item A-NEW
136160	Scrap , silver plated metal, not on silver, etc	⇒Cancel; see item A-NEW
136200	Scrap , white metal alloy, NOI, etc	⇒Cancel; see item A-NEW
136210	Sheet Metal , silver plated, not on silver, NOI, etc	⇒Cancel; see item A-NEW
136240	Silicon (metal containing not less than 96 percent nor more than 99 percent of silica), etc.....	⇒Cancel; see item A-NEW
136260	Silicon Copper , etc	⇒Cancel; see item A-NEW
136340	Silver Plated Ware or Pewter Plated Ware , not on silver or pewter, NOI, etc	⇒Cancel; see item A-NEW
136430	Solder , braziers', NOI, other than with gold, palladium or silver content, etc	⇒Cancel; see item A-NEW
136440	Solder , NOI, other than with gold, palladium or silver content, etc	⇒Cancel; see item A-NEW

SUBJECT 3

Proposed Classification Provisions—Continued

Item	Description	Class
	METALS GROUP: subject to item 135300	
136441	NOTE—⇒Cancel; no further application.	
136450	Speiss (smelter by-product, containing cobalt-nickel), etc ⇒Cancel; see item A-NEW	
136460	Tellurium Metal , etc ⇒Cancel; see item A-NEW	
136480	Terne Metal (alloy of lead and tin), bars, pigs, slabs or scraps, etc ⇒Cancel; see item A-NEW	
136490	Turnings , aluminum and magnesium, mixed, etc ⇒Cancel; see item A-NEW	
136492	NOTE—⇒Cancel; no further application.	
136500	Metal, NOI, or Metal Alloys, NOI: Articles, NOI, Bars, Billets, Blooms, Castings, NOI, in boxes, crates or drums; Forgings, Ingots, Pigs, Plates, Powder, Rings, Rods, Scrap, Sheets, Shot, Sponge, Strip, Welding Rods or Wire, Other Forms or Shapes, NOI, consisting of one piece of metal, etc ⇒Cancel; see item A-NEW	
136512	NOTE—⇒Cancel; no further application.	
136514	NOTE—⇒Cancel; no further application.	
136516	NOTE—⇒Cancel; no further application.	
136590	Type Metal , not metal printers' type; or Type Metal Adjusting Alloys ; etc ⇒Cancel; see item A-NEW	
136610	White Metal Alloys, NOI, bars, pigs or slabs, etc ⇒Cancel; see item A-NEW	

SUBJECT 3

Proposed Classification Provisions—Continued

Item	Description	Class
	METALS GROUP: subject to item 135300	
136612	NOTE—⇒Cancel; see item B-NEW.	
136650	Zirconium-manganese-silicon , etc ⇒Cancel; see	item A-NEW
⇒A-NEW	Metals or Metal Alloys , see Note, item B-NEW, viz.: Anodes , NOI, in packages; Articles , NOI, in packages; Bars , NOI, in packages; Billets , NOI, in packages; Blanks , NOI, in packages; Blooms , NOI, in packages; Cakes , NOI, in packages; Castings , NOI, in boxes, crates or drums; Circles , NOI, in boxes; Dross, Skimmings, or Sludge , in bags, boxes or drums; Disks , NOI, in boxes; Forgings , NOI, in packages; Forms or Shapes , NOI, consisting of one piece of metal, in packages; Ingots , NOI, in packages; Metals or Metal Alloys , NOI, in packages; Pigs , NOI, in packages; Plates , NOI, in packages; Powder , NOI, in bags, boxes or drums; Residue , NOI, in boxes or drums; Rings , NOI, in packages; Rods , NOI, in packages; Scrap , NOI, in packages; Sheets , NOI, in packages; Shot , NOI, in packages; Slab , NOI, in packages; Solder , NOI, in packages; Speiss (smelter by-product, containing cobalt-nickel), in bags or drums; Sponge , NOI, in packages; Strip , NOI, in boxes;	

SUBJECT 3

Proposed Classification Provisions—Concluded

Item	Description	Class
METALS GROUP: subject to item 135300		
Metals or Metal Alloys, viz.: subject to item A-NEW		
Turnings, NOI, other than scrap, in boxes or drums;		
Welding Rods or Wire, NOI, in packages or on reels;		
Subject to Item 170 and having a density in pounds per cubic foot of:		
Sub 1	Less than 1	400
Sub 2	1 but less than 2.....	300
Sub 3	2 but less than 4.....	250
Sub 4	4 but less than 6.....	175
Sub 5	6 but less than 8.....	125
Sub 6	8 but less than 10.....	100
Sub 7	10 but less than 12.....	92.5
Sub 8	12 but less than 15.....	85
Sub 9	15 but less than 22.5.....	70
Sub 10	22.5 but less than 30.....	65
Sub 11	30 but less than 35.....	60
Sub 12	35 but less than 50.....	55
Sub 13	50 or greater.....	50
⇒ B-NEW NOTE—Does not apply on alloys containing gold, silver, palladium or platinum.		

Analysis

Introduction

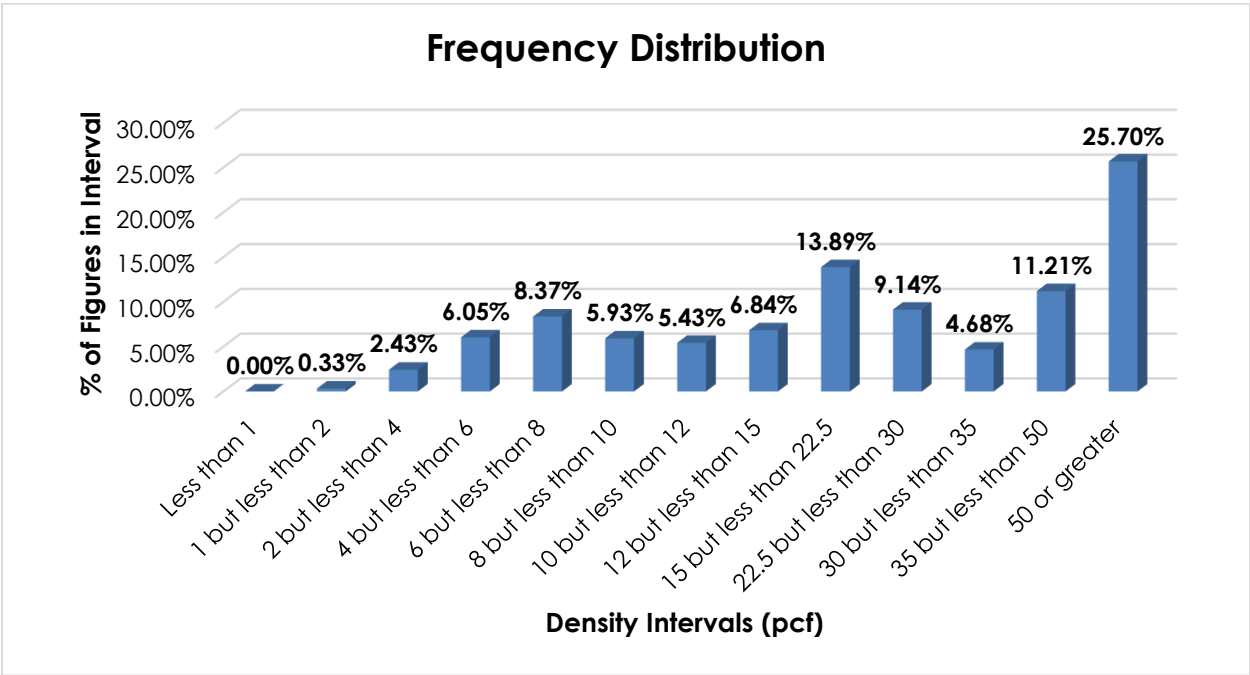
There are numerous items subject to the Metals Group that name particular types of metals or metal alloys, and these provisions can be difficult to interpret, apply, or verify. The transportation characteristics below relate to the items subject to the Metals Group, as shown in the Present Classification Provisions herein.

Transportation Characteristics

Density—The information of record includes 26,455 density observations obtained from the FCDC's Density Study⁴. The densities range from 1.21 to 149.96 pcf, with an overall average density of 35.14 pcf. As shown in the graph on the following page, the density distribution is broadly spread throughout the range, with a distinct peak in the greater than 50 pcf interval, and smaller peaks in the 6 but less than 8 pcf, and 15 but less than 22.5 pcf intervals.

⁴ The Density Study is part of an ongoing effort by the FCDC to collect information on actual shipments across all product categories handled by the LTL industry. Carriers that choose to participate in the Study periodically submit shipment data captured through their respective freight auditing programs. The FCDC uses verifiable data points, identified by NMFC item, that include the weight and the dimensions and/or cube of the shipping unit.

SUBJECT 3



Handling, Stowability, and Liability—There have been no reports of unusual or significant handling, stowability, or liability issues.

Conclusion

Based on the foregoing analysis, numerous items in the Metals Group, as shown in the Proposed Classification Provisions herein, would be canceled with reference to a new item, which would provide the FCDC's 13-subprovision density scale⁵, and a "viz." format. Note, item 136612, would be canceled and reestablished attendant to the new item to clarify the application of the articles in the "viz." Additionally, ten Notes would be canceled with no further application.

The FCDC's Packaging Development Manager has reviewed the proposed minimum packaging requirements and determined they are appropriate for the LTL environment.

⁵ The FCDC's standard 13-subprovision density scale includes reference to Item (Rule) 170, the inadvertence clause.