

SUBJECT 12

Re: Uninterruptible Power Supplies — Item 63496

Contact: Amber V. Parker Telephone — (703) 838-1810 parker@nmfta.org

Proponent: Freight Classification Development Council

Present Classification Provisions

Item	Description	Class
	ELECTRICAL EQUIPMENT GROUP: subject to item 60500	
63160	Switches, Switch Boxes, Electrical Enclosures or Electrical Wiring Equipment, see Note, item 63162, viz.: Circuit Breakers or Switches, including Air-Break Switches or Timing Switches; Electric Meter Sockets; Electrical Enclosures, NOI; Fittings, electrical conduit, NOI; Junction Boxes or Cabinets; Outlet Box Covers, other than outlet box plates; Outlet Boxes; Switch Boxes, NOI; Terminal Boxes or Housings; Terminal or Junction Blocks; Terminals, electrical cable or wiring, NOI, including Connectors or Butt Splices, see Note, item 63163; In boxes, see Note, item 63161, subject to Item 170 and having a density in pounds per cubic foot of:	
Sub 1	Less than 1	400
Sub 2	1 but less than 2.....	300
Sub 3	2 but less than 4.....	250
Sub 4	4 but less than 6.....	175
Sub 5	6 but less than 8.....	125
Sub 6	8 but less than 10.....	100
Sub 7	10 but less than 12.....	92.5
Sub 8	12 but less than 15.....	85
Sub 9	15 but less than 22.5.....	70
Sub 10	22.5 but less than 30.....	65
Sub 11	30 or greater.....	60

SUBJECT 12

Present Classification Provisions — Concluded

Item	Description	Class
63161	<p>ELECTRICAL EQUIPMENT GROUP: subject to item 60500</p> <p>NOTE—The following departures from packing requirements are permitted:</p> <ol style="list-style-type: none"> 1. Terminals, terminal boxes or housings, electric meter sockets, or terminal or junction blocks may be shipped in Packages 1241 or 1273. 2. Aluminum railway switch or junction boxes exceeding 140 pounds may be shipped on skids. 3. Circuit breakers or switches may be shipped in crates or Packages 1241, 1273 or 2243. 	
63162	<p>NOTE—Provisions do not apply on plastic underground utility service boxes or enclosures such as pedestal housings, sectionalizing cabinets or substation covers intended for outdoor use. For provisions applicable on these commodities, see item 50808, 'Boxes or Enclosures, underground utility service, plastic.'</p>	
63163	<p>NOTE—Also applies on terminals joined by a web of metal forming continuous strips to permit automatic machine assembly.</p>	
63494	<p>NOTE—Applies on articles primarily designed to provide a temporary back-up power source for computers and other electronic equipment in the event of a power failure.</p>	
63496	<p>Uninterruptible Power Supplies (UPSs), containing a sealed lead acid battery and transformer, see Note, item 63494, in boxes.....70</p>	

THIS SPACE INTENTIONALLY LEFT BLANK

SUBJECT 12

Proposed Classification Provisions

Item	Description	Class
63160	<p>ELECTRICAL EQUIPMENT GROUP: subject to item 60500</p> <p>Switches, Switch Boxes, Electrical Enclosures or Electrical Wiring Equipment, see Note, item 63162, viz.:</p> <p>Circuit Breakers or Switches, including Air-Break Switches or Timing Switches;</p> <p>Electric Meter Sockets;</p> <p>Electrical Enclosures, NOI;</p> <p>Fittings, electrical conduit, NOI;</p> <p>Junction Boxes or Cabinets;</p> <p>Outlet Box Covers, other than outlet box plates;</p> <p>Outlet Boxes;</p> <p>Switch Boxes, NOI;</p> <p>Terminal Boxes or Housings;</p> <p>Terminal or Junction Blocks;</p> <p>Terminals, electrical cable or wiring, NOI, including Connectors or Butt Splices, see Note, item 63163;</p> <p>⇒ Uninterruptible Power Supplies (UPSs), see Note, item NEW;</p> <p>In boxes, see Note, item 63161, subject to Item 170 and having a density in pounds per cubic foot of:</p>	
Sub 1	Less than 1	400
Sub 2	1 but less than 2.....	300
Sub 3	2 but less than 4.....	250
Sub 4	4 but less than 6.....	175
Sub 5	6 but less than 8.....	125
Sub 6	8 but less than 10.....	100
Sub 7	10 but less than 12.....	92.5
Sub 8	12 but less than 15.....	85
Sub 9	15 but less than 22.5.....	70
Sub 10	22.5 but less than 30.....	65
Sub 11	30 or greater	60
63161	NOTE—No Change.	
63162	NOTE—No Change.	
63163	NOTE—No Change.	
⇒NEW	NOTE—Applies on articles primarily designed to provide a temporary back-up power source for computers and other electronic equipment in the event of a power failure.	
63494	NOTE—⇒Cancel; see item NEW.	
63496	<p>Uninterruptible Power Supplies (UPSs), containing a sealed lead acid battery and transformer, etc</p> <p>⇒Cancel; see item 63160</p>	

SUBJECT 12

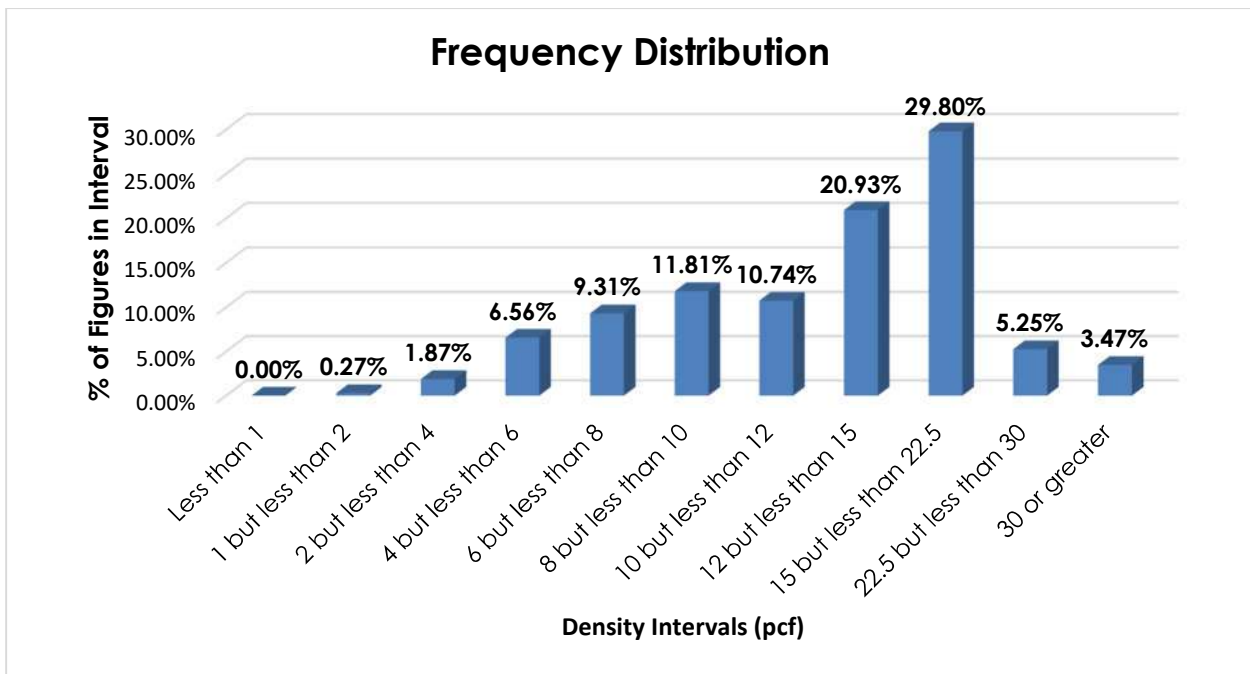
Analysis

Introduction

This proposal responds to the summation of Research Project 1517, which sought to review the transportation characteristics of uninterrupted power supplies.

Transportation Characteristics

Density—The information of record includes 14,150 density observations submitted by carriers and obtained from the FCDC’s Density Study¹. The densities range from 1.02 to 63.10 pcf, with an overall average density of 14.18 pcf. As shown in the graph below, the density distribution is left-skewed.



Handling, Stowability and Liability—There have been no reports of unusual or significant handling, stowability or liability issues.

¹ The Density Study is part of an ongoing effort by the FCDC to collect information on actual shipments across all product categories handled by the LTL industry. Carriers that choose to participate in the Study periodically submit shipment data captured through their respective freight auditing programs. The FCDC uses verifiable data points, identified by NMFC item, that include the weight and the dimensions and/or cube of the shipping unit.

SUBJECT 12**Conclusion**

Based on the foregoing analysis, and in the interest of clarification and simplification, item 63496 would be canceled with reference to the full-scale, density-based provisions of item 63160². Concurrently, this proposal would amend the "viz." listing in item 63160 to include "Uninterruptible Power Supplies (UPSs)."

Note, item 63494 would be cancelled with reference to a new Note attendant to item 63160.

² Item 63160 provides the FCDC's standard 11-subprovision density scale, which includes reference to Item (Rule) 170, the inadvertence clause.