

SUBJECT 11

Re: Shucks, (Husks), corn — Item 175740

Contact: Lanae C. Peterson Telephone — (703) 838-1810 peterson@nmfta.org

Proponent: Freight Classification Development Council

Present Classification Provisions

Item	Description	Class
175740	Shucks (Husks) , corn, in boxes	100

Proposed Classification Provisions

Item	Description	Class
⇒175740	Shucks (Husks) , corn, in boxes, subject to Item 170 and having a density in pounds per cubic foot of:	
Sub 1	Less than 6	175
Sub 2	6 but less than 10.....	150
Sub 3	10 or greater.....	92.5

Analysis

Introduction

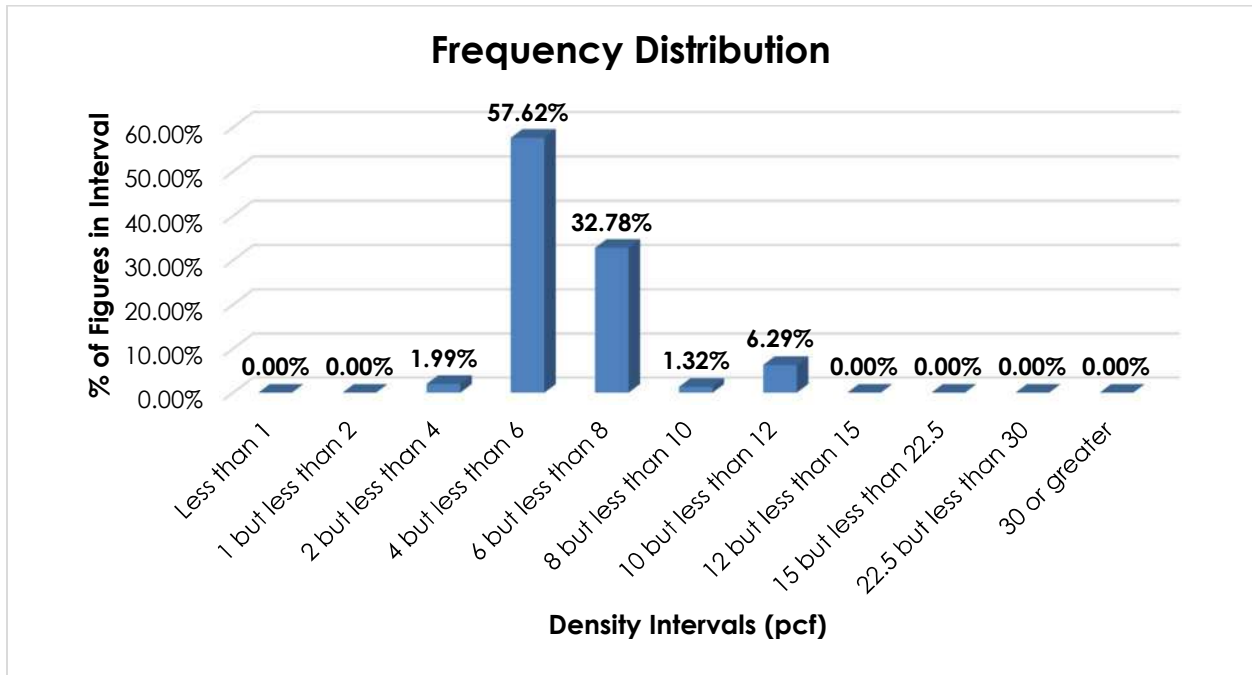
This proposal responds to the summation of Research Project 1522, which sought to review the transportation characteristics of corn husks, as named in item 175740.

Transportation Characteristics

Density—The information of record includes 302 density observations submitted by a carrier and obtained from the FCDC's Density Study¹. The densities range from 2.31 to 10.99 pcf, with an overall average density of 6.13 pcf. As shown in the graph on the following page, the densities are tightly clustered around the average, with almost 90% of the figures falling between 4 and 8 pcf. Density breaks at 6 and 10 pcf reflect the modality and spread of the distribution.

¹ The Density Study is part of an ongoing effort by the FCDC to collect information on actual shipments across all product categories handled by the LTL industry. Carriers that choose to participate in the Study periodically submit shipment data captured through their respective freight auditing programs. The FCDC uses verifiable data points, identified by NMFC item, that include the weight and the dimensions and/or cube of the shipping unit.

SUBJECT 11



When the data is evaluated based on the proposed density breaks at 6 and 10 pcf, the density ranges and averages shown in the table below emerge.

Density Groups (pcf)	Density Range (pcf)	Average Density (pcf)
Less than 6	2.31 – 5.98	5.30
6 but less than 10	6.01 – 9.66	6.76
10 or greater	10.00 – 10.99	10.58

Handling, Stowability and Liability—There have been no reports of unusual or significant handling, stowability or liability issues.

Conclusion

Based on the foregoing analysis, item 175740 would be amended to assign classes predicated on density, with breaks at 6 and 10 pcf². The table below relates the information of record to the proposed density groupings and FCDC guidelines.

Density Groups (pcf)	Average Density (pcf)	FCDC Minimum Average Density Guideline (pcf)	Class based on FCDC Density Guidelines
Less than 6	5.30	5	175
6 but less than 10	6.76	6	150
10 or greater	10.58	10.5	92.5

² The density provisions would include reference to Item (Rule) 170, the inadvertence clause.