

SUBJECT 10

Re: Radio, Radiotelephone or Television Transmitting or Transmitting and Receiving Sets, or other Radio Impulse or Wireless Audio (Sound) Impulse Transmitting or Transmitting and Receiving Sets, including Cellular Telephones — Items 62820 and 62850

Contact: Lanae C. Peterson Telephone — (703) 838-1810 peterson@nmfta.org

Proponent: Freight Classification Development Council

Present Classification Provisions

Item	Description	Class
	ELECTRICAL EQUIPMENT GROUP: subject to item 60500	
62820	Radio, Radio-telephone or Television Transmitting or Transmitting and Receiving Sets, or other Radio Impulse or Wireless Audio (Sound) Impulse Transmitting or Transmitting and Receiving Sets, separate or combined, in boxes or crates, see Note, item 62822:	
Sub 1	Released value not exceeding \$3.00 per pound.....	100
Sub 2	Released value exceeding \$3.00 per pound but not exceeding \$6.00 per pound.....	125
Sub 3	Released value exceeding \$6.00 per pound but not exceeding \$10.00 per pound.....	175
62822	NOTE—The released value must be entered on shipping order and bill of lading in the following form: 'The agreed or declared value of the property is hereby specifically stated by the shipper to be not exceeding _____ per pound.' If the shipper fails or declines to execute the above statement or designates a value exceeding \$10.00 per pound, shipment will not be accepted, but if shipment is inadvertently accepted, charges will be assessed initially on the basis of the class for the highest value provided. Upon proof of lower actual value, the freight charges will be adjusted to those that would apply if the shipment had been released to the amount of its actual value. (Classes herein based on released value have been authorized by the Interstate Commerce Commission in Released Rates Order No. MC-597 of December 24, 1964, as amended October 9, 1980.)	
62850	Radio-telephones, cellular (Cellular Telephones), see Note, item 62851, in boxes.....	300
62851	NOTE—Applies only on shipments of cellular radio-telephones not specifically released as to value in accordance with the provisions of item 62820 at time of shipment.	

SUBJECT 10

Proposed Classification Provisions

Item	Description	Class
62820	ELECTRICAL EQUIPMENT GROUP: subject to item 60500 Radio, Radio-telephone or Television Transmitting or Transmitting and Receiving Sets, or other Radio Impulse or Wireless Audio (Sound) Impulse Transmitting or Transmitting and Receiving Sets, separate or combined, etc..... ⇒Cancel; see item NEW	
62822	NOTE—⇒Cancel; no further application.	
62850	Radio-telephones, cellular (Cellular Telephones), etc..... ⇒Cancel; see item NEW	
62851 ⇒NEW	NOTE—⇒Cancel; no further application. Radio, Radiotelephone or Television Transmitting or Transmitting and Receiving Sets, or other Radio Impulse or Wireless Audio (Sound) Impulse Transmitting or Transmitting and Receiving Sets, including Cellular Telephones, separate or combined, in boxes or crates, subject to Item 170 and having a density in pounds per cubic foot of:	
Sub 1	Less than 8.....	150
Sub 2	8 or greater	100

Analysis

Introduction

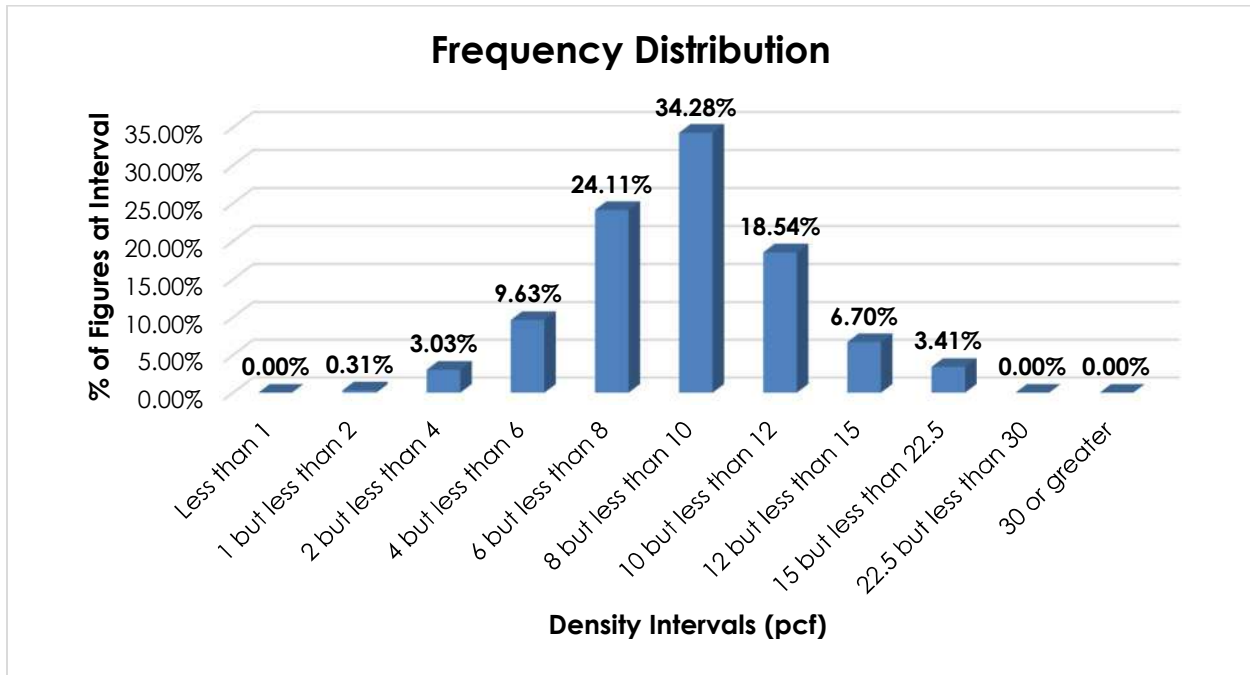
This proposal responds to the summation of Research Project 1521, which sought to review the transportation characteristics of radio, radiotelephone or television transmitting or transmitting and receiving sets, or other radio impulse or wireless audio (sound) impulse transmitting or transmitting and receiving sets, as named in item 62820, and cellular radiotelephones (cellular telephones), as named in item 62850.

Transportation Characteristics

Density—The information of record includes 53,480 density observations obtained from the FCDC's Density Study¹. The densities range from 1.01 to 19.66 pcf, with an overall average density of 8.86 pcf. As shown in the graph on the following page, the densities are clustered around the average, with nearly 77% of the figures falling between 6 and 12 pcf. A density break at 8 pcf reflects the modality and spread of the distribution.

¹ The Density Study is part of an ongoing effort by the FCDC to collect information on actual shipments across all product categories handled by the LTL industry. Carriers that choose to participate in the Study periodically submit shipment data captured through their respective freight auditing programs. The FCDC uses verifiable data points, identified by NMFC item, that include the weight and the dimensions and/or cube of the shipping unit.

SUBJECT 10



When the data is evaluated based on the proposed density break at 8 pcf, the density ranges and averages shown in the table below emerge.

Density Groups (pcf)	Density Range (pcf)	Average Density (pcf)
Less than 8	1.01 – 7.99	6.25
8 or greater	8.00 – 19.66	10.40

Handling, Stowability and Liability—There have been no reports of unusual or significant handling, stowability or liability issues.

Conclusion

Based on the foregoing analysis, items 62850 and 62820 would be canceled with reference to a new item, naming “Radio, Radiotelephone or Television Transmitting or Transmitting and Receiving Sets, or other Radio Impulse or Wireless Audio (Sound) Impulse Transmitting or Transmitting and Receiving Sets, including Cellular Telephones, separate or combined,” and assign classes predicated on density, with a break at 8 pcf². The table below relates the information of record to the proposed density groupings and FCDC guidelines.

Density Groups (pcf)	Average Density (pcf)	FCDC Minimum Average Density Guideline (pcf)	Class based on FCDC Density Guidelines
Less than 8	6.25	6	150
8 or greater	10.40	9	100

Notes, items 62822 and 62851 would be canceled with no further application.

² The density provisions would include reference to Item (Rule) 170, the inadvertence clause.