

SUBJECT 9

Re: Water Coolers or Beverage Dispensers

Contact: Angela L. Li Telephone — (703) 838-1882 angela.li@nmfta.org

Proponent: Freight Classification Development Council

Present Classification Provisions

Item	Description	Class
	COOLERS GROUP: subject to item 53000	
53025	Coolers, Iceboxes or Refrigerators , NOI, without mechanical cooling or freezing apparatus, see Note, item 53026, in boxes, crates or Package 107, subject to Item 170 and having a density in pounds per cubic foot of:	
Sub 1	Less than 1	400
Sub 2	1 but less than 2	300
Sub 3	2 but less than 4	250
Sub 4	4 but less than 6	175
Sub 5	6 but less than 8	125
Sub 6	8 but less than 10	100
Sub 7	10 but less than 12	92.5
Sub 8	12 but less than 15	85
Sub 9	15 but less than 22.5	70
Sub 10	22.5 but less than 30	65
Sub 11	30 or greater	60
53026	NOTE—Also applies on Cooling or Freezing Rooms, or Cooling or Freezing Room Panels or Wall Sections , without mechanical cooling or freezing apparatus.	
53190	Water Coolers , NOI, with plastic or metal walls, insulated, with or without plastic liner, in boxes.....	125
53220	Water Coolers and Cooling or Freezing Apparatus combined , in boxes, crates or Package 1132; also on skids for pieces weighing 3,000 pounds or over.....	85
63825	Exhibits , museum, Articles of Antiquity or Antiques , see Note, item 63826	0
63826	NOTE—Does not apply on numismatic exhibits as named in item 63830; paintings or pictures subject to items 56165 or 100240; antique furniture subject to item 100240; nor antique china or glassware subject to items 47500, 88160 or 100240.	

SUBJECT 9

Present Classification Provisions — Concluded

Item	Description	Class
	MACHINERY GROUP: subject to item 114000	
119610	Dispensers , carbonated beverage (Soda Fountains), see Note, item 119611:	
Sub 1	In boxes, crates, containers with integral lift truck skids or pallets, or Packages 107 or 1056, subject to Item 170 and having a density in pounds per cubic foot of:	
Sub 2	Less than 5	250
Sub 3	5 but less than 10	125
Sub 4	10 or greater.....	70
Sub 5	In packages other than as set forth in sub 1, subject to Item 170 and having a density in pounds per cubic foot of:	
Sub 6	Less than 5	300
Sub 7	5 but less than 10	150
Sub 8	10 or greater.....	77.5
119611	NOTE—Applies on beverage dispensers that combine syrup, carbon dioxide and water to make carbonated soft drinks.	
119620	Dispensers or Urns , beverage or syrup, NOI, with faucets or pumps, with or without agitators or stands, in boxes or crates, see Note, item 119621:	
Sub 1	Mechanically self-refrigerated	92.5
Sub 2	Other than mechanically self-refrigerated:	
Sub 3	Plastic	250
Sub 4	Other	125
119621	NOTE—Bowls or urns for containing the beverage, or covers therefor, may be in separate boxes.	

THIS SPACE INTENTIONALLY LEFT BLANK

SUBJECT 9

Proposed Classification Provisions

Item	Description	Class
	COOLERS GROUP: subject to item 53000	
53025	Coolers, Iceboxes or Refrigerators , NOI, without mechanical cooling or freezing apparatus, see Note, item 53026, in boxes, crates or Package 107, subject to Item 170 and having a density in pounds per cubic foot of:	
Sub 1	Less than 1	400
Sub 2	1 but less than 2	300
Sub 3	2 but less than 4	250
Sub 4	4 but less than 6	175
Sub 5	6 but less than 8	125
Sub 6	8 but less than 10	100
Sub 7	10 but less than 12	92.5
Sub 8	12 but less than 15	85
Sub 9	15 but less than 22.5	70
Sub 10	22.5 but less than 30	65
Sub 11	30 or greater	60
53026	NOTE—No Change.	
53190	Water Coolers , NOI, with plastic or metal walls, insulated, with or without plastic liner, etc	⇒Cancel; see item 53025
53220	Water Coolers and Cooling or Freezing Apparatus combined , etc	⇒Cancel; see item NEW
63825	Exhibits , museum, Articles of Antiquity or Antiques , see Note, item 63826	0
63826	NOTE—No Change.	
	MACHINERY GROUP: subject to item 114000	
119610	Dispensers , carbonated beverage (Soda Fountains).....	⇒Cancel; see item NEW
119611	NOTE—⇒Cancel; no further application.	
119620	Dispensers or Urns , beverage or syrup, NOI, with faucets or pumps, with or without agitators or stands, etc	⇒Cancel; see items 63825, NEW and provisions otherwise applicable
119621	NOTE—⇒Cancel; no further application.	
⇒NEW	Coolers or Dispensers , beverage or water, with mechanical apparatus, in boxes, crates or Packages 107, 1132 or 2457, subject to Item 170 and having a density in pounds per cubic foot of:	
Sub 1	Less than 7	175
Sub 2	7 but less than 12	110
Sub 3	12 or greater	70

SUBJECT 9

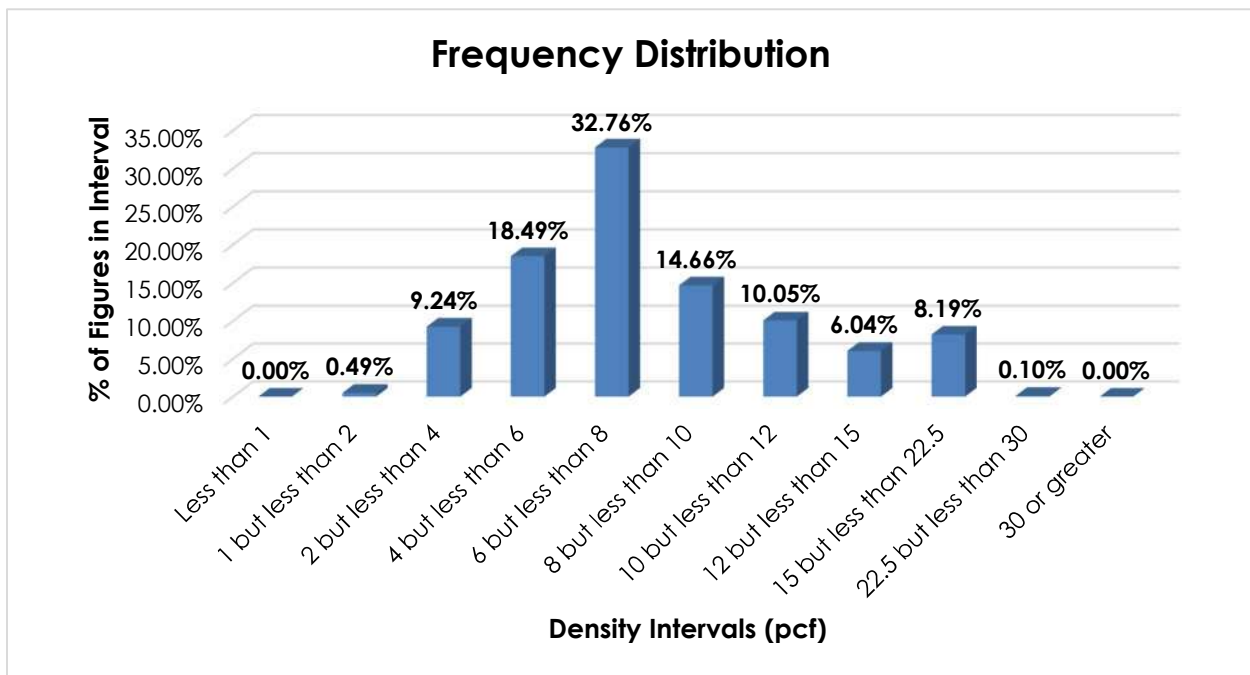
Analysis

Introduction

This proposal is based on the information developed through Research Project 1525, which was initiated to review the transportation characteristics of water coolers. During the course of research, the project was expanded to include other beverage dispensers.

Transportation Characteristics

Density—The information of record includes 32,441 density observations obtained from the FCDC’s Density Study¹. The densities range from 1.73 to 23.47 pcf, with an overall average density of 8.04 pcf. As shown in the graph below, the density distribution is right-skewed, with the highest peak in the 6 but less than 8 pcf interval. Density breaks at 7 and 12 pcf reflect the modality and spread of the distribution.



When the data is evaluated based on the proposed density breaks at 7 and 12 pcf, the density ranges and averages shown in the table below emerge.

Density Groups (pcf)	Density Range (pcf)	Average Density (pcf)
Less than 7	1.73 – 6.99	5.07
7 but less than 12	7.00 – 11.99	8.65
12 or greater	12.00 – 23.47	15.05

¹ The Density Study is part of an ongoing effort by the FCDC to collect information on actual shipments across all product categories handled by the LTL industry. Carriers that choose to participate in the Study periodically submit shipment data captured through their respective freight auditing programs. The FCDC uses verifiable data points, identified by NMFC item, that include the weight and the dimensions and/or cube of the shipping unit.

SUBJECT 9

Handling, Stowability and Liability—There have been no reports of unusual or significant handling, stowability or liability issues.

Conclusion

Based on the foregoing analysis, this proposal would cancel item 53190 with reference to item 53025. Items 53220, 119610 and 119620² would be canceled with reference to a new item, naming “Coolers or Dispensers, beverage or water, with mechanical apparatus.” Classes predicated on density breaks at 7 and 12 pcf³ would be assigned. The table below relates the information of record to the proposed density groupings and FCDC guidelines.

Density Groups (pcf)	Average Density (pcf)	FCDC Minimum Average Density Guideline (pcf)	Class Based on FCDC Density Guidelines
Less than 7	5.07	5	175
7 but less than 12	8.65	8	110
12 or greater	15.05	15	70

Moreover, the FCDC’s Packaging Development Manager has reviewed the proposed minimum packaging requirements and determined that they are appropriate for the LTL environment.

Notes, items 119611 and 119621 would be canceled with no further application.

² Item 119620 would be canceled with reference to the new item, item 63825, naming “Exhibits, museum, Articles of Antiquity or Antiques,” and provisions otherwise applicable. When shipped, the appropriate classification for beverage or syrup dispensers or urns would be dependent upon the product’s representation and intended use.

³ The density provisions would include reference to Item (Rule) 170, the inadvertence clause.