

**SUBJECT 7**

**Re:** Torches or Welders, or Parts thereof

**Contact:** Lanae C. Peterson Telephone — (703) 838-1810 peterson@nmfta.org

**Proponent:** Freight Classification Development Council

**Present Classification Provisions**

Item	Description	Class
	<b>MACHINERY GROUP:</b> subject to item 114000	
133050	<b>Welders, NOI, or Parts thereof, NOI, see Note, item 133052:</b>	
Sub 1	Inertia friction type:	
Sub 2	SU, loose, or mounted on or shipped with freight trailers .....	100
Sub 3	In boxes or crates, or on skids, or mounted on hand trucks or in cabinets or permanently affixed skids.....	77.5
Sub 4	Electric:	
Sub 5	SU, loose, or mounted on or shipped with freight trailers .....	100
Sub 6	In boxes or crates, or on skids, or in cabinets or permanently affixed skids.....	70
133052	NOTE—Will also apply on the following articles shipped in boxes with the welders: Masks, lenses, aprons, gloves, sleeves, hand tools, wire brushes, electric tools, abrasive wheels, cord sets, vises, electrode holders, cable, ground clamps, arc torches, welding carbons, welding bars, rods or wire, soapstone, oilers, steel tape measures, steel boxes, funnels or fire extinguishers, hand type. Total weight of such articles must not exceed 600 pounds for each welder shipped.	
	<b>TOOLS, OR PARTS NAMED:</b> subject to item 183550	
186680	<b>Torches</b> , braze-welding, hand held, with oxygen generator and oxygen generating chemical pellets; with propane fuel in disposable container of not more than one quart capacity, see Note, item 186682; or in boxes .....	85
186682	NOTE—Also applies on the following articles shipped in same box with braze- welding torch: tips, brazing rods, plastic eye shield and sparking ignitor.	
186690	<b>Torches</b> , cutting or welding, NOI, with or without equipment of tips, in boxes.....	150
186710	<b>Torches</b> , hand, other than blow, cutting or welding, see Note, item 186711, in boxes:	
Sub 1	With not to exceed complement of fuel in disposable container of not over 1 quart capacity .....	77.5
Sub 2	Without fuel .....	85
Sub 3	<b>Parts, viz.: Burners, Tips or Valves</b> .....	85
186711	NOTE—Also applies on torches which are used in roofing or for weed burning, stump burning, thawing, drying or snow melting.	

SUBJECT 7

Present Classification Provisions — Concluded

Item	Description	Class
	<b>TOOLS, OR PARTS NAMED:</b> subject to item 183550	
186720	<b>Torches</b> , oxygen, cutting or welding, hand held, with not more than 1.1 cubic feet (40.1 grams) of oxygen in disposable container, see Notes, items 186721 and 186722.....	100
186721	NOTE—Applies only on oxygen torch consisting of burner tip or head with built-in control valve and oxygen gauge, designed for attaching directly to disposable oxygen and fuel containers.	
186722	NOTE—Also applies on the following articles when shipped in same box with oxygen torch: brazing and welding rods, protective welding goggles, sparking igniter and instruction book.	

Proposed Classification Provisions

Item	Description	Class
	<b>MACHINERY GROUP:</b> subject to item 114000	
133050	<b>Welders, NOI, or Parts thereof</b> , NOI, etc.....	⇒Cancel; see item A-NEW
133052	NOTE—⇒Cancel; no further application	
	<b>TOOLS, OR PARTS NAMED:</b> subject to item 183550	
186680	<b>Torches</b> , braze-welding, hand held, with oxygen generator and oxygen generating chemical pellets; with propane fuel in disposable container of not more than one quart capacity, etc .....	⇒Cancel; see item A-NEW
186682	NOTE—⇒Cancel; no further application.	
186690	<b>Torches</b> , cutting or welding, NOI, etc .....	⇒Cancel; see item A-NEW
186710	<b>Torches</b> , hand, other than blow, cutting or welding, etc .....	⇒Cancel; see item A-NEW
186711	NOTE—⇒Cancel; no further application.	
186720	<b>Torches</b> , oxygen, cutting or welding, hand held, with not more than 1.1 cubic feet (40.1 grams) of oxygen in disposable container, etc .....	⇒Cancel; see item A-NEW
186721	NOTE—⇒Cancel; no further application.	
186722	NOTE—⇒Cancel; no further application.	

**SUBJECT 7**

**Proposed Classification Provisions — Concluded**

<b>Item</b>	<b>Description</b>	<b>Class</b>
⇒A-NEW	<b>Torches or Welders, or Parts thereof</b> , NOI, not required by the U.S. Department of Transportation to bear a Hazard Class or Hazard Division label or placard, see Notes, items B-NEW, C-NEW, and D-NEW, in packages, subject to Item 170 and having a density in pounds per cubic foot of:	
Sub 1	Less than 1 .....	400
Sub 2	1 but less than 2 .....	300
Sub 3	2 but less than 4 .....	250
Sub 4	4 but less than 6 .....	175
Sub 5	6 but less than 8 .....	125
Sub 6	8 but less than 10 .....	100
Sub 7	10 but less than 12 .....	92.5
Sub 8	12 but less than 15 .....	85
Sub 9	15 but less than 22.5 .....	70
Sub 10	22.5 but less than 30 .....	65
Sub 11	30 or greater .....	60
⇒B-NEW	NOTE—Also applies on accompanying complement of accessories shipped in same package.	
⇒C-NEW	NOTE—Does not apply on torches used for lamps or lighting. For applicable provisions, see item 109950.	
⇒D-NEW	NOTE—Does not apply on materials regulated by the U.S. Department of Transportation as hazardous and required to bear a Hazard Class or Hazard Division label or placard. For classes applicable to such hazardous materials, see provisions elsewhere in this Classification.	

**Analysis**

**Introduction**

This proposal responds to the summation of Research Project 1528, which sought to review the transportation characteristics of torches or welders, as embraced by items 133050, 186680, 186690, 186710 and 186720.

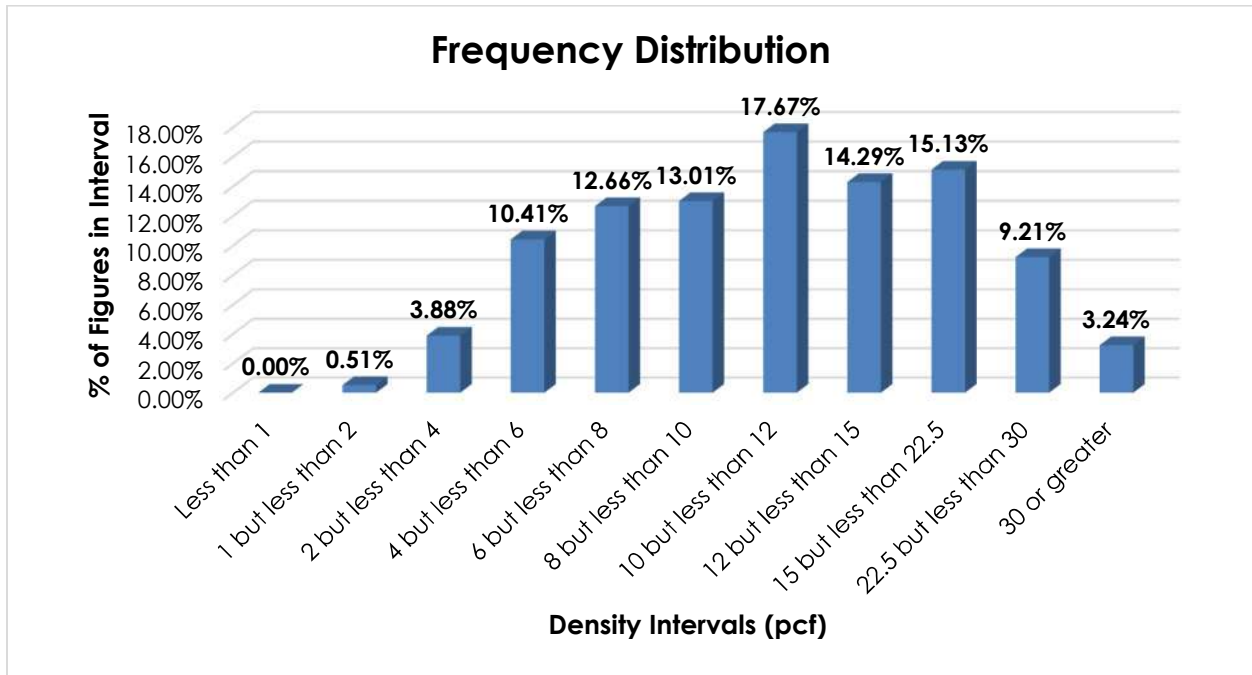
**Transportation Characteristics**

**Density**—The information of record includes 23,759 density observations obtained from the FCDC’s Density Study<sup>1</sup>. The densities range from 1.02 to 44.18 pcf, with an overall average density of 12.89 pcf. As shown in the graph on the following page, the densities are widely distributed throughout the range.

---

<sup>1</sup> The Density Study is part of an ongoing effort by the FCDC to collect information on actual shipments across all product categories handled by the LTL industry. Carriers that choose to participate in the Study periodically submit shipment data captured through their respective freight auditing programs. The FCDC uses verifiable data points, identified by NMFC item, that include the weight and the dimensions and/or cube of the shipping unit.

SUBJECT 7



**Handling, Stowability and Liability**—There have been no reports of unusual or significant handling, stowability or liability issues.

**Conclusion**

Based on the foregoing analysis, this proposal would cancel items 133050, 186680, 186690, 186710, and 186720 with reference to a new item, naming "Torches or Welders, or Parts thereof, NOI." The new item would be restricted to products not regulated as hazardous by the U.S. Department of Transportation and would provide classes predicated on the FCDC's standard 11-subprovision density scale<sup>2</sup>.

Additionally, three new attendant Notes would be established to clarify the application of the new item.

The FCDC's Packaging Development Manager has reviewed the proposed minimum packaging requirements and determined that they are appropriate for the LTL environment.

Notes, items 133052, 186682, 186711, 186721, and 186722 would be canceled as having no further application.

<sup>2</sup> The FCDC's standard 11-subprovision density scale includes reference to Item (Rule) 170, the inadvertence clause.