

SUBJECT 6

Re: Vehicle Parts

Contact: Angela L. Li Telephone — (703) 838-1882 angela.li@nmfta.org

Proponent: Freight Classification Development Council

Present Classification Provisions

Item	Description	Class
	VEHICLE PARTS: subject to item 190500	
190540	Assemblies , caliper brake, bicycle, see Note, item 190541, in boxes70	
190541	NOTE—Applies on assemblies consisting of calipers, brake pads or shoes, control levers and cables.	
190660	Backs or Guards , sled or wagon for children's vehicle:	
Sub 1	SU, not nested, in wrapped bundles or in boxes or crates.....200	
Sub 2	SU, nested or KD, other than KD flat, in boxes.....100	
Sub 3	KD flat, in boxes85	
190670	Belts , traction, snowmobile, rubber, reinforced with fabric, in boxes70	
190680	Bicycle Motor Wheels (Engines and Wheels combined) , in boxes or crates .150	
190700	Bicycle Motors , consisting of internal combustion engines and power transmission appliances, for attaching to bicycle frames, in boxes or crates100	
190740	Bicycle, Motorcycle or Motorcycle Sidecar Chassis Parts , NOI, other than plastic or plastic with metal components, in boxes or drums100	
	Bicycle, Motorcycle or Tricycle: subject to item 190760	
190780	Attachments , stabilizer or support, consisting of two rubber tired wheels and necessary accessories for mounting on bicycles, KD, in boxes70	
190790	Baskets , saddle, steel wire, KD flat, with necessary hardware for installation, in boxes70	
190800	Forks , iron or steel, in boxes, crates or drums65	
190880	Handle Bars, Bar Stems, Cranks or Seat Posts , in boxes or drums70	
190900	Hubs , with or without brake attachments, brake arms, sprockets or wrenches, in boxes70	
190920	Kickstands , iron or steel, in packages.....70	
190930	Mud Guards (Fenders), or Chain or Skirt Guards:	
Sub 1	Finished, in boxes or crates85	
Sub 2	Unfinished, in packages70	
190950	Pedals , in boxes or drums.....70	
191130	Wheel Spokes or Nipples , separate or combined, steel, in boxes60	
191140	Blocks or Linings , brake, sintered iron, freight truck, tractor or trailer, see Note, item 191142, in boxes60	
191142	NOTE—Applies only when consisting of steel plates with a facing composition consisting of not less than 75 percent of sintered iron and the remainder of graphite and other materials.	

SUBJECT 6

Present Classification Provisions — Continued

Item	Description	Class
	VEHICLE PARTS: subject to item 190500	
191420	Brackets , automobile body mounting, see Note, item 191422, 3/16 inch or thicker steel, in boxes or stacked with wooden separators in packages60	60
191422	NOTE—Applies only on brackets for mounting automobile bodies on assembly line trucks.	
191560	Children's Vehicle Parts , NOI, wooden, in panels, in the white, in packages..70	70
191600	Cushions , vehicle seat or seat back, NOI, other than foam rubber or cellular, expanded or foam plastic, see Note, item 191602, in bales, boxes or crates..... 125	125
191602	NOTE—Applies only on vehicle seat or seat back cushions which are integral parts of the vehicle seats.	
191640	Dollies , house trailer, NOI.....85	85
191700	Felloes or Wheel Rims , wooden, NOI, in the white, in packages 60	60
191820	Freight Trailer Parts , NOI, see Note, item 191822, iron or steel, cast or forged, or plate or sheet not thinner than 12 gauge, in packages..... 60	60
191822	NOTE—Applies only on nonadjustable or fixed position articles with no moving parts having the purpose of suspension, support or reinforcement, but not on running or driving gear assemblies nor on frames or frame assemblies or sub-frame assemblies nor on spring suspension assemblies, nor on bodies or body parts.	
191840	Gates , freight vehicle, iron or steel chain, in boxes.....70	70
191860	Gear Frames , freight trailer, steel85	85
191930	Gears , children's vehicle, in packages:	
Sub 1	SU, wheels off or without wheels200	200
Sub 2	KD.....70	70
192030	Hitches or Couplers, NOI, or Parts thereof , NOI, not wheeled, with or without stabilizers, in packages, subject to Item 170 and having a density in pounds per cubic foot of:	
Sub 1	Less than 1 400	400
Sub 2	1 but less than 2 300	300
Sub 3	2 but less than 4250	250
Sub 4	4 but less than 6 175	175
Sub 5	6 but less than 8 125	125
Sub 6	8 but less than 10 100	100
Sub 7	10 but less than 1292.5	92.5
Sub 8	12 but less than 15 85	85
Sub 9	15 but less than 22.570	70
Sub 10	22.5 but less than 30 65	65
Sub 11	30 or greater 60	60
192050	Hoppers or Trays , fertilizer cart or wheelbarrow:	
Sub 1	Not nested..... 125	125
Sub 2	Nested, in packages85	85

SUBJECT 6

Present Classification Provisions — Continued

Item	Description	Class
	VEHICLE PARTS: subject to item 190500	
192180	License Plates , vehicle, in boxes:	
Sub 1	Iron or steel.....	70
Sub 2	Other than iron or steel	85
192210	Lift Truck Attachments:	
Sub 1	Fork arms, fingers or tines, steel.....	65
Sub 2	NOI, steel or steel and rubber, in boxes or on skids, see Note, item 192212.....	70
192212	NOTE—Applies only on attachments designed to facilitate materials handling. Attachments may be equipped with hydraulic cylinders.	
192215	Linings or Blocks , vehicle wheel brake, composition, NOI, other than flexible, in boxes.....	65
192230	Motor Truck or Tractor Trailer Couplers , including Fifth Wheels, or Parts thereof , NOI, or Freight Trailer Standards or Supports, or Parts thereof , NOI, iron or steel, or iron or steel and cast aluminum combined, see Note, item 192232, in packages.....	70
192232	NOTE—Applies only when cast aluminum content does not exceed 25 percent of the weight on which freight charges are assessed.	
192280	Motorcycle Sidecars , in boxes or crates:	
Sub 1	SU	250
Sub 2	KD.....	150
192300	Motorcycle Wheel Rims:	
Sub 1	Unfinished, in packages.....	100
Sub 2	Finished, in boxes or crates	150
192360	Pads , pedal or step, rubber or rubber and steel combined, NOI, in bags, boxes or drums.....	85
192380	Pads , pedal, bicycle or children's vehicle, rubber or plastic, cut or not cut, without metal fittings, in bags, boxes, bundles or drums.....	55
192390	Parts , motor truck or tractor trailer coupler, iron or steel, cast or forged, or plate or sheet not thinner than 12 gauge, in the rough, see Note, item 192391, in crates	50
192391	NOTE—Applies only when not assembled and as from the mold, forge, press or stamp, except that they may be rough turned to 1/8 inch of finished size, fins, gates and sinker heads may be removed, articles may be cleaned or tumbled, bolt holes may be made but not threaded, castings may be annealed, and articles may be primed, leaded or tarred with one coat only to prevent rust.	
192550	Racks , hay or stock:	
Sub 1	SU, loose	200
Sub 2	KD, in packages.....	85
192590	Rims , bicycle wheel, aluminum, steel or wood, see Note, item 192591:	
Sub 1	Interleaved or interlaced, in packages.....	100
Sub 2	Other than interleaved or interlaced, in boxes or crates.....	150

SUBJECT 6

Present Classification Provisions — Concluded

Item	Description	Class
	VEHICLE PARTS: subject to item 190500	
192591	NOTE—Applies only on bicycle wheel rims constituting the circular outer part of the wheel on which the tire will be mounted. Does not apply on complete bicycle wheels, or rims shipped with spokes or hubs attached.	
192620	Runners , sled or sleigh, steel, loose or in packages	70
192680	Seat Backs , wooden, in the white:	
Sub 1	Bent, nested, in packages	85
Sub 2	Bent, not nested, in packages	100
Sub 3	Not bent, with or without pan head nuts, strapped to pallets	70
192730	Seats , troop, wood with iron or steel hardware, in crates.....	70
192870	Spring Bolsters , in packages.....	70
192910	Tires , NOI, steel.....	70
192950	Tongue Supports , not wheeled, in packages	70
193050	Truck Steps , KD or collapsed	85

Proposed Classification Provisions

Item	Description	Class
	VEHICLE PARTS: subject to item 190500	
190540	Assemblies , caliper brake, bicycle, etc	⇒Cancel; see item NEW
190541	NOTE—Cancel; no further application.	
190660	Backs or Guards , sled or wagon for children's vehicle, etc.....	⇒Cancel; see item NEW
190670	Belts , traction, snowmobile, rubber, reinforced with fabric, etc	⇒Cancel; see item NEW
190680	Bicycle Motor Wheels (Engines and Wheels combined) , etc	⇒Cancel; see item NEW
190700	Bicycle Motors , consisting of internal combustion engines and power transmission appliances, etc.....	⇒Cancel; see item NEW
190740	Bicycle, Motorcycle or Motorcycle Sidecar Chassis Parts , NOI, other than plastic or plastic with metal components, etc	⇒Cancel; see item NEW
	Bicycle, Motorcycle or Tricycle: subject to item 190760	
190780	Attachments , stabilizer or support, consisting of two rubber tired wheels and necessary accessories for mounting on bicycles, etc.....	⇒Cancel; see item NEW
190790	Baskets , saddle, steel wire, etc	⇒Cancel; see item NEW
190800	Forks , iron or steel, etc.....	⇒Cancel; see item NEW

SUBJECT 6

Proposed Classification Provisions — Continued

Item	Description	Class
	VEHICLE PARTS: subject to item 190500	
	Bicycle, Motorcycle or Tricycle: subject to item 190760	
190880	Handle Bars, Bar Stems, Cranks or Seat Posts, etc.....	⇒Cancel; see item NEW
190900	Hubs, with or without brake attachments, brake arms, sprockets or wrenches, etc	⇒Cancel; see item NEW
190920	Kickstands, iron or steel, etc	⇒Cancel; see item NEW
190930	Mud Guards (Fenders), or Chain or Skirt Guards, etc	⇒Cancel; see item NEW
190950	Pedals, etc	⇒Cancel; see item NEW
191130	Wheel Spokes or Nipples, separate or combined, steel, etc	⇒Cancel; see item NEW
191140	Blocks or Linings, brake, sintered iron, freight truck, etc	⇒Cancel; see item NEW
191142	NOTE—Cancel; no further application.	
191420	Brackets, automobile body mounting, etc.....	⇒Cancel; see item NEW
191422	NOTE—Cancel; no further application.	
191560	Children's Vehicle Parts, NOI, wooden, in panels, in the white, etc	⇒Cancel; see item NEW
191600	Cushions, vehicle seat or seat back, NOI, etc.....	⇒Cancel; see item NEW
191602	NOTE—Cancel; no further application.	
191640	Dollies, house trailer, NOI.....	⇒Cancel; see item NEW
191700	Felloes or Wheel Rims, wooden, NOI, in the white, etc	⇒Cancel; see item NEW
191820	Freight Trailer Parts, NOI, see Note, item 191822, iron or steel, etc...	⇒Cancel; see item NEW
191822	NOTE—Cancel; no further application.	
191840	Gates, freight vehicle, iron or steel chain, etc	⇒Cancel; see item NEW
191860	Gear Frames, freight trailer, steel	⇒Cancel; see item NEW
191930	Gears, children's vehicle, etc	⇒Cancel; see item NEW
192030	Hitches or Couplers, NOI, or Parts thereof, NOI, not wheeled, with or without stabilizers, etc	⇒Cancel; see item NEW
192050	Hoppers or Trays, fertilizer cart or wheelbarrow, etc.....	⇒Cancel; see item NEW

SUBJECT 6

Proposed Classification Provisions — Continued

Item	Description	Class
	VEHICLE PARTS: subject to item 190500	
192180	License Plates , vehicle, etc	⇒Cancel; see item NEW
192210	Lift Truck Attachments , etc	⇒Cancel; see item NEW
192212	NOTE—Cancel; no further application.	
192215	Linings or Blocks , vehicle wheel brake, composition, NOI, etc.....	⇒Cancel; see item NEW
192230	Motor Truck or Tractor Trailer Couplers , including Fifth Wheels, or Parts thereof, NOI, or Freight Trailer Standards or Supports, or Parts thereof , NOI, iron or steel, etc.....	⇒Cancel; see item NEW
192232	NOTE— Cancel; no further application.	
192280	Motorcycle Sidecars , etc	⇒Cancel; see item NEW
192300	Motorcycle Wheel Rims , etc.....	⇒Cancel; see item NEW
192360	Pads , pedal or step, rubber or rubber and steel combined, etc.....	⇒Cancel; see item NEW
192380	Pads , pedal, bicycle or children's vehicle, rubber or plastic, etc	⇒Cancel; see item NEW
192390	Parts , motor truck or tractor trailer coupler, iron or steel, etc	⇒Cancel; see item NEW
192391	NOTE—Cancel; no further application.	
192550	Racks , hay or stock, etc.....	⇒Cancel; see item NEW
192590	Rims , bicycle wheel, aluminum, steel or wood, etc.....	⇒Cancel; see item NEW
192591	NOTE—Cancel; no further application.	
192620	Runners , sled or sleigh, steel, etc.....	⇒Cancel; see item NEW
192680	Seat Backs , wooden, in the white, etc.....	⇒Cancel; see item NEW
192730	Seats , troop, wood with iron or steel hardware, etc	⇒Cancel; see item NEW
192870	Spring Bolsters , etc	⇒Cancel; see item NEW
192910	Tires , NOI, steel.....	⇒Cancel; see item NEW
192950	Tongue Supports , not wheeled, etc.....	⇒Cancel; see item NEW
193050	Truck Steps , etc	⇒Cancel; see item NEW

SUBJECT 6

Proposed Classification Provisions — Concluded

Item	Description	Class
	VEHICLE PARTS: subject to item 190500	
⇒NEW	Vehicle Parts, viz.: Bicycle Parts, Attachments or Accessories; Freight Trailer Parts, NOI; Hitches or Couplers, or Parts thereof, NOI; Lift Truck Attachments, NOI; Vehicle Parts, NOI; In boxes or crates, subject to Item 170 and having a density in pounds per cubic foot of:	
Sub 1	Less than 1	400
Sub 2	1 but less than 2.....	300
Sub 3	2 but less than 4.....	250
Sub 4	4 but less than 6.....	175
Sub 5	6 but less than 8.....	125
Sub 6	8 but less than 10.....	100
Sub 7	10 but less than 12.....	92.5
Sub 8	12 but less than 15.....	85
Sub 9	15 but less than 22.5.....	70
Sub 10	22.5 but less than 30.....	65
Sub 11	30 or greater.....	60

Analysis

Introduction

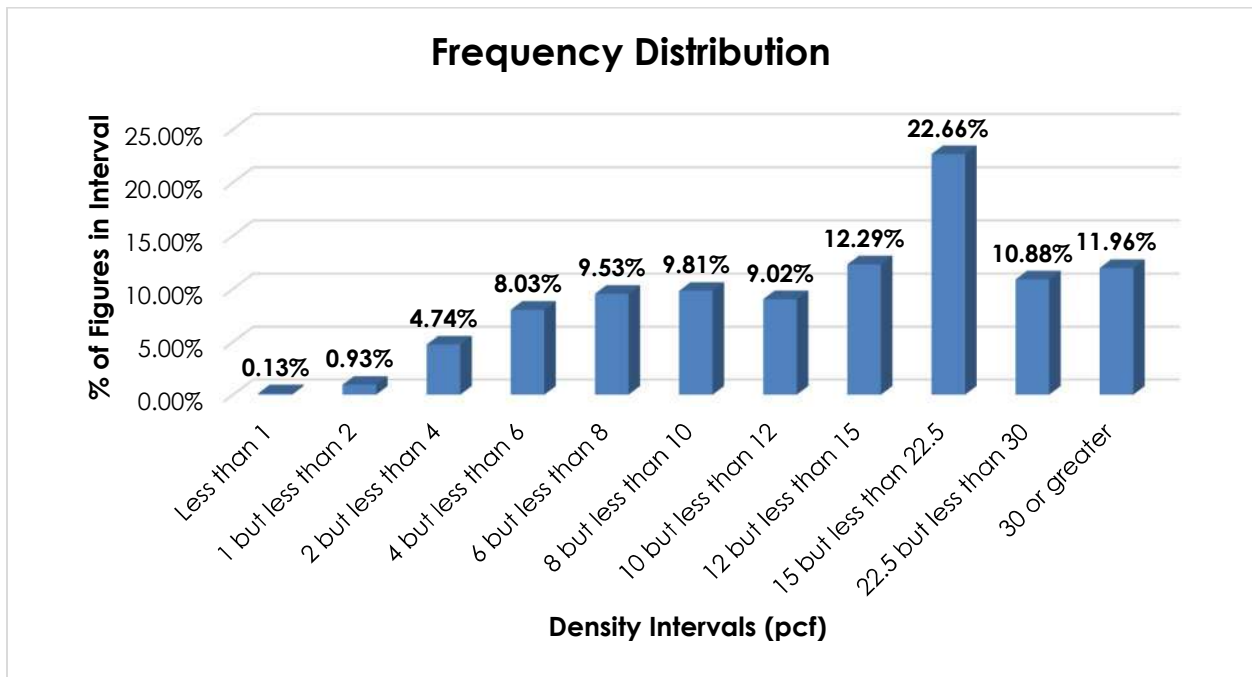
Numerous items in the Vehicle Parts Group name particular types of vehicle parts, and these provisions can be difficult to interpret, apply or verify. The transportation characteristics below relate to the items subject to the Vehicle Parts Group, as shown in the Present Classification Provisions herein.

Transportation Characteristics

Density—The information of record includes 121,317 density observations obtained from the FCDC’s Density Study¹. The densities range from 0.26 to 61.87 pcf, with an overall average density of 16.50 pcf. As shown in the graph on the following page, the densities are widely distributed throughout the range.

¹ The Density Study is part of an ongoing effort by the FCDC to collect information on actual shipments across all product categories handled by the LTL industry. Carriers that choose to participate in the Study periodically submit shipment data captured through their respective freight auditing programs. The FCDC uses verifiable data points, identified by NMFC item, that include the weight and the dimensions and/or cube of the shipping unit.

SUBJECT 6



Handling, Stowability and Liability—There have been no reports of unusual or significant handling, stowability or liability issues.

Conclusion

Based on the foregoing analysis, and in the interest of clarification and simplification, numerous items, as shown in the Proposed Classification Provisions herein, would be canceled with reference to a new item, naming “Vehicle Parts,” with a “viz.” format, and classes predicated on the FCDC’s standard 11-subprovision density scale².

Numerous Notes would be canceled as having no further application.

The FCDC’s Packaging Development Manager has reviewed the proposed minimum packaging requirements and determined that they are appropriate for the LTL environment.

² The FCDC’s standard 11-subprovision density scale includes reference to Item (Rule) 170, the inadvertence clause.