

SUBJECT 5

Re: Household Utensils Group

Contact: Amber V. Parker Telephone — (703) 838-1810 parker@nmfta.org

Proponent: Freight Classification Development Council

Present Classification Provisions

Item	Description	Class
	HOUSEHOLD UTENSILS GROUP: subject to item 100500	
100540	Bottle Cappers , hand, in boxes or drums	85
100560	Bottle Openers , NOI, in boxes, subject to Item 170 and having a density in pounds per cubic foot of:	
Sub 1	Less than 12	125
Sub 2	12 or greater	70
100610	Can Openers , hand operated, in boxes	70
100760	Crushers , ice, electric or hand operated, in boxes	85
100940	Forks, Knives, Knife Blades or Spoons , in boxes:	
Sub 1	Gold- or silver-plated, other than on precious metals, see Note, item 100942.....	100
Sub 2	NOI, other than plastic, see Notes, items 100942 and 100944	85
Sub 3	Steel, galvanized, tinned, plain or plated other than gold- or silver-plated, see Note, item 100943.....	77.5
100942	NOTE—Forks, knives, knife blades or spoons, made of gold or other precious metal (other than sterling silver), or with parts of gold or other precious metal (other than sterling silver), such as backs or handles, but not including small silver ornaments, not taken.	
100943	NOTE—Also applies when inner containers contain not to exceed one tray or chest for each set of tableware.	
100944	NOTE—For provisions applicable to plastic forks, knives or spoons, see item 156600.	
101205	Nutcrackers or Nutpicks , steel, in boxes.....	70
101280	Potato Mashers , NOI, in boxes or drums	85
101400	Squeezers or Extractors (Hand Juicers, NOI) , in boxes	77.5

SUBJECT 5

Present Classification Provisions — Concluded

Item	Description	Class
	HOUSEHOLD UTENSILS GROUP: subject to item 100500	
101425	Tools , hand, kitchen, NOI, other than power, in boxes, subject to Item 170 and having a density in pounds per cubic foot of:	
Sub 1	Less than 1	400
Sub 2	1 but less than 2	300
Sub 3	2 but less than 4	250
Sub 4	4 but less than 6	175
Sub 5	6 but less than 8	125
Sub 6	8 but less than 10	100
Sub 7	10 but less than 12	92.5
Sub 8	12 but less than 15	85
Sub 9	15 but less than 22.5	70
Sub 10	22.5 but less than 30	65
Sub 11	30 or greater	60
	MACHINERY GROUP: subject to item 114000	
123150	Ice Crushing or Ice Shaving Machines , in boxes or crates, subject to Item 170 and having a density in pounds per cubic foot of:	
Sub 1	Less than 6	200
Sub 2	6 but less than 10	125
Sub 3	10 or greater	77.5

Proposed Classification Provisions

Item	Description	Class
	HOUSEHOLD UTENSILS GROUP: subject to item 100500	
100540	Bottle Cappers , hand, etc	⇒Cancel; see item 101425
100560	Bottle Openers , NOI, etc	⇒Cancel; see item 101425
100610	Can Openers , hand operated, etc	⇒Cancel; see item 101425
100760	Crushers , ice, electric or hand operated, etc	⇒Cancel; see item 123150
100940	Forks, Knives, Knife Blades or Spoons , etc	⇒Cancel; see item 101425
100942	NOTE—⇒Cancel; see item A-NEW.	
100943	NOTE—⇒Cancel; see item B-NEW.	
100944	NOTE—⇒Cancel; see item C-NEW.	
101205	Nutcrackers or Nutpicks , steel, etc	⇒Cancel; see item 101425
101280	Potato Mashers , NOI, etc	⇒Cancel; see item 101425

SUBJECT 5

Proposed Classification Provisions — Concluded

Item	Description	Class
	HOUSEHOLD UTENSILS GROUP: subject to item 100500	
101400	Squeezers or Extractors (Hand Juicers, NOI), etc	⇒Cancel; see item 101425
101425	⇒ Tools, hand, kitchen, other than power, viz.: ⇒ Bottle Cappers; ⇒ Bottle or Can Openers, NOI; ⇒ Forks, Knives, Knife Blades or Spoons, see Notes, items A-NEW, B-NEW and C-NEW; ⇒ Tools, hand, kitchen, other than power, NOI; ⇒ Nutcrackers and Nutpicks, NOI; ⇒ Potato Mashers, NOI; ⇒ Squeezers or Extractors (Hand Juicers, NOI); In boxes, subject to Item 170 and having a density in pounds per cubic foot of:	
Sub 1	Less than 1	400
Sub 2	1 but less than 2.....	300
Sub 3	2 but less than 4.....	250
Sub 4	4 but less than 6.....	175
Sub 5	6 but less than 8.....	125
Sub 6	8 but less than 10.....	100
Sub 7	10 but less than 12.....	92.5
Sub 8	12 but less than 15.....	85
Sub 9	15 but less than 22.5.....	70
Sub 10	22.5 but less than 30.....	65
Sub 11	30 or greater.....	60
⇒A-NEW	NOTE—Forks, knives, knife blades or spoons, made of gold or other precious metal (other than sterling silver), or with parts of gold or other precious metal (other than sterling silver), such as backs or handles, but not including small silver ornaments, not taken.	
⇒B-NEW	NOTE—Articles may be shipped with complement of trays or chests in same package.	
⇒C-NEW	NOTE—Does not apply on plastic dinnerware or tableware. For applicable provisions, see item 156600.	
	MACHINERY GROUP: subject to item 114000	
123150	Ice Crushing or Ice Shaving Machines, in boxes or crates, subject to Item 170 and having a density in pounds per cubic foot of:	
Sub 1	Less than 6.....	200
Sub 2	6 but less than 10	125
Sub 3	10 or greater	77.5

SUBJECT 5

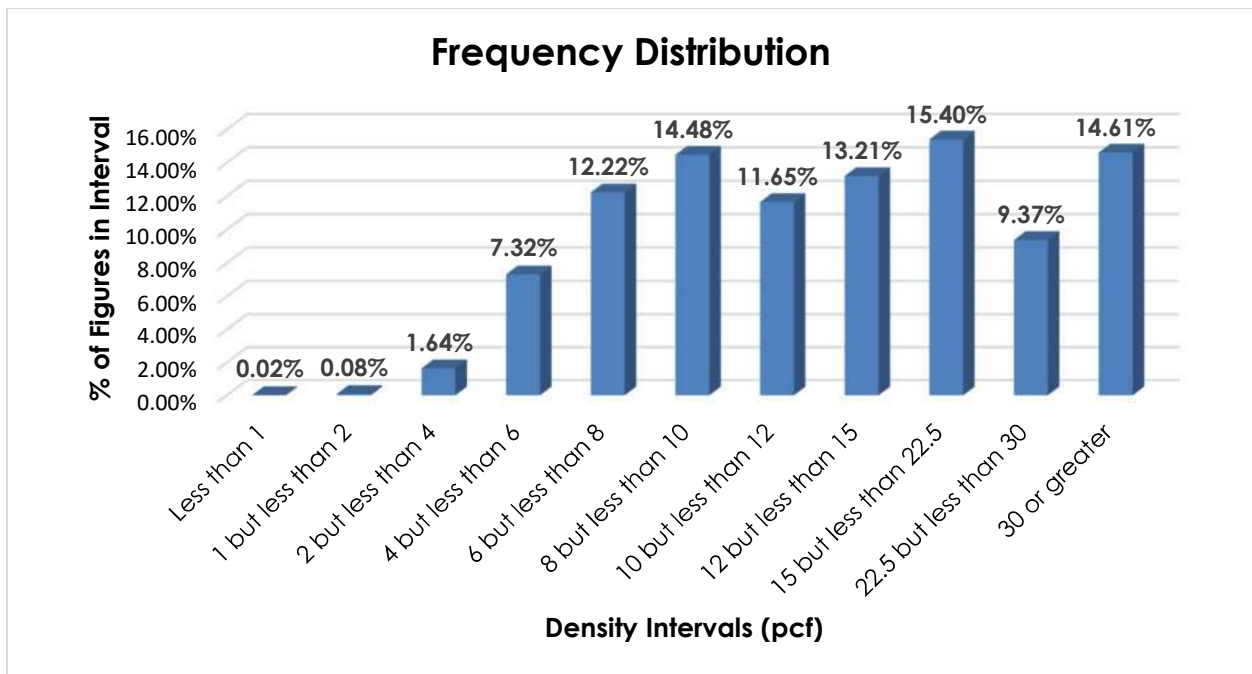
Analysis

Introduction

This proposal is based on a review of the Household Utensils Group. The transportation characteristics below relate to items 100540, 100560, 100610, 100940, 101205, 101280, 101400 and 101425, as shown in the Present Classification Provisions herein.

Transportation Characteristics

Density—The information of record includes 27,528 density observations obtained from the FCDC’s Density Study¹. The densities range from 0.05 to 63.64 pcf, with an overall average density of 16.84 pcf. As shown in the graph below, the densities are distributed throughout the range.



Handling, Stowability and Liability—There have been no reports of unusual or significant handling, stowability or liability issues.

¹ The Density Study is part of an ongoing effort by the FCDC to collect information on actual shipments across all product categories handled by the LTL industry. Carriers that choose to participate in the Study periodically submit shipment data captured through their respective freight auditing programs. The FCDC uses verifiable data points, identified by NMFC item, that include the weight and the dimensions and/or cube of the shipping unit.

SUBJECT 5**Conclusion**

Based on the foregoing analysis, items 100540, 100560, 100610, 100940, 101205, 101280, and 101400 would be canceled with reference to the full-scale, density-based provisions of item 101425². Additionally, the description of item 101425 would be amended to establish a "viz." format in the interest of clarification and simplification.

Moreover, in the interest of clarification and simplification, item 100760 would also be canceled with reference to item 123150.

Notes, items 100942, 100943 and 100944 would be canceled and reestablished as new attendant Notes to item 101425.

² Item 101425 provides the FCDC's standard 11-subprovision density scale, which includes reference to Item (Rule) 170, the inadvertence clause.