

SUBJECT 2

Re: Agricultural Implements, other than hand, and Agricultural Implements Parts Groups

Contact: Adam C. Mercer Telephone — (703) 838-1911 mercer@nmfta.org

Proponent: Freight Classification Development Council

Present Classification Provisions

See Appendix A herein.

Proposed Classification Provisions

See Appendix B herein.

Analysis

Introduction

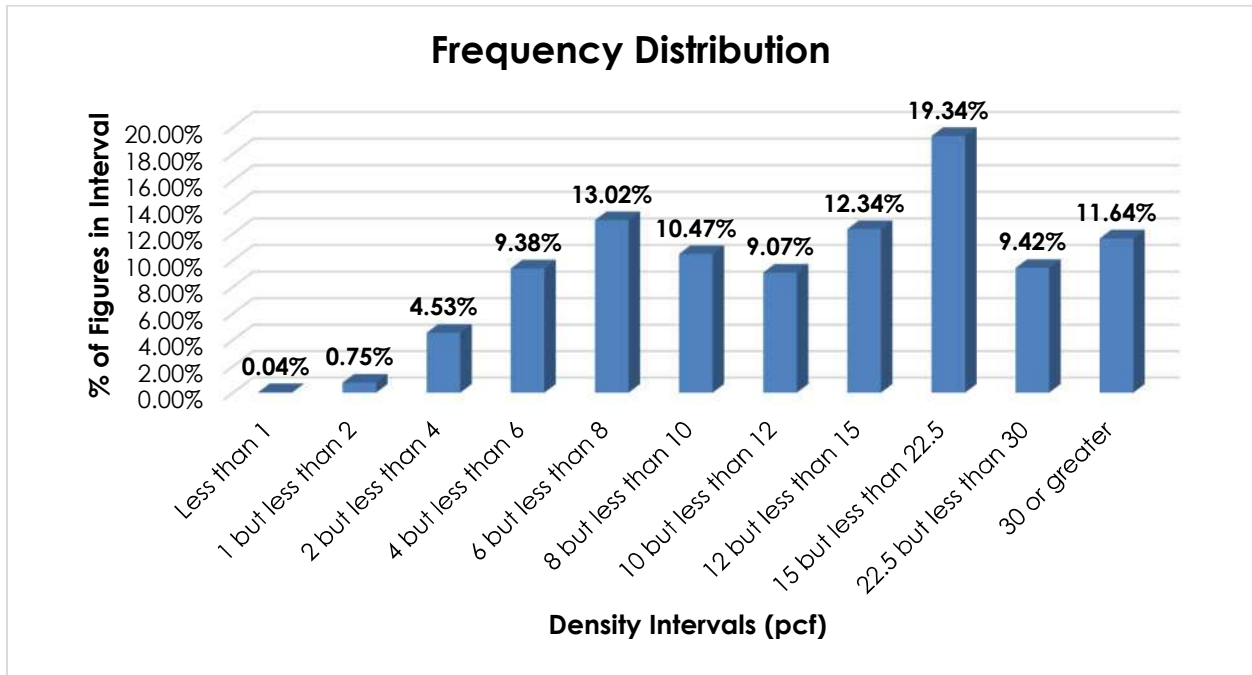
Numerous items in the Agricultural Implements, other than hand, and Agricultural Implements Parts Groups name particular types of agricultural implements and agricultural implements parts, and these provisions can be difficult to interpret, apply or verify. The transportation characteristics below relate to the items subject to the Agricultural Implements, other than hand, and Agricultural Implements Parts Groups, as shown in the Present Classification Provisions herein.

Transportation Characteristics

Density—The information of record includes 63,860 density observations obtained from the FCDC's Density Study¹. The densities range from 0.62 to 63.07 pcf, with an overall average density of 15.93 pcf. As shown in the graph on the following page, the densities are distributed throughout the range, with a distinct peak in the 15 but less than 22.5 pcf interval. Density breaks at 8, 12 and 22.5 pcf reflect the modality and spread of the distribution.

¹ The Density Study is part of an ongoing effort by the FCDC to collect information on actual shipments across all product categories handled by the LTL industry. Carriers that choose to participate in the Study periodically submit shipment data captured through their respective freight auditing programs. The FCDC uses verifiable data points, identified by NMFC item, that include the weight and the dimensions and/or cube of the shipping unit.

SUBJECT 2



When the data is evaluated based on the proposed density breaks at 8, 12 and 22.5 pcf, the density ranges and averages shown in the table below emerge.

| Density Groups (pcf) | Density Range (pcf) | Average Density (pcf) |
|-----------------------|---------------------|-----------------------|
| Less than 8 | 0.62 – 7.99 | 5.55 |
| 8 but less than 12 | 8.00 – 11.99 | 9.88 |
| 12 but less than 22.5 | 12.00 – 22.49 | 16.37 |
| 22.5 or greater | 22.50 – 63.07 | 34.56 |

Handling—Agricultural implements may be shipped in boxes or crates, or in packages other than boxes or crates. Articles shipped in boxes or crates should not typically present unusual or significant handling considerations.

When tendered in packages that provide minimal exterior protection, additional care must be taken when handling the freight to avoid damaging the products or other freight.

Stowability—When agricultural implements are tendered in boxes or crates, a flat load-bearing surface will typically be present, which can allow for loading other freight on top of the handling unit. There will typically be lateral support for adjacent freight as well.

When agricultural implements are tendered in packages other than boxes or crates, a regular load-bearing surface for top freight or lateral support for adjacent freight may not be present. These products may also have protrusions or edges that can potentially be damaged or damage adjacent freight. These factors can result in increased time and effort for the carrier to properly structure the vehicle load to mitigate the chance of damage to the products or other freight.

SUBJECT 2

Liability—As with most general commodities, when tendered for shipment fully enclosed within boxes or crates, agricultural implements should not be unusually susceptible to damage nor likely to damage other freight. However, when tendered in packages other than boxes or crates, they exhibit greater susceptibility to damage. Also, if not properly stowed within the vehicle, they can potentially damage other freight.

Conclusion

Based on the foregoing analysis, this proposal would cancel numerous provisions for specific agricultural implements and agricultural implement parts with reference to a new item, naming “Agricultural Implements, other than hand, or Parts thereof,” with a “viz.” format. Although the densities are distributed throughout the range, providing classes predicated on packaging and density, with breaks at 8, 12 and 22.5 pcf², would more accurately reflect the exacting nature of handling and stowing, as well as account for the potential liability of the inherently larger, more oddly shaped commodities that necessitate packaging that deviates from general boxed freight. The table below relates the information of record to the proposed density groupings and FCDC guidelines for the proposed classes when tendered in boxes or crates and a one-class adjustment from the density guidelines when the articles are tendered in packages other than boxes or crates to reflect the identified negative handling, stowability and liability characteristics.

| Density Groups (pcf) | Average Density (pcf) | FCDC Minimum Average Density Guideline (pcf) | Class based on FCDC Density Guidelines | Class Adjustment Based on Handling, Stowability and Liability Considerations |
|-----------------------|-----------------------|--|--|--|
| Less than 8 | 5.55 | 5 | 175 | 200 |
| 8 but less than 12 | 9.88 | 9 | 100 | 110 |
| 12 but less than 22.5 | 16.37 | 15 | 70 | 77.5 |
| 22.5 or greater | 34.56 | 30 | 60 | 65 |

Other provisions would be canceled with reference to items 53390³, 156600³ and 177680³, in the interest of clarification and simplification.

Numerous Notes would be canceled as having no further application. Note, item 8902 would be canceled and reestablished as a new attendant Note to the new item to clarify its application. Another Note would be established to provide additional packaging requirements for agricultural implements when tendered in packages other than boxes or crates.

² The density provisions would include reference to Item (Rule) 170, the inadvertence clause.

³ The density provisions include reference to Item (Rule) 170, the inadvertence clause.

FREIGHT CLASSIFICATION DOCKET 2024-1

| ITEM | ARTICLE | CLASS |
|-------|--|-------|
| 8900 | AGRICULTURAL IMPLEMENTS, OTHER THAN HAND, GROUP: Articles consist of Agricultural Implements, other than hand, see Notes, items 8902 and 8904, as described in items subject to this grouping. | |
| 8902 | NOTE—Also applies on accompanying tools, other than power tools, necessary for the adjustment and operation of the agricultural implement with which shipped. | |
| 8904 | NOTE—(a) When provision is made for implements, KD, loose or in bundles, the poles, wheels and other large parts will be accepted loose. Detached small parts must be in boxes or securely wired to frame. (b) Where in the separate descriptions of articles provision is made for KD only, and article is shipped set up, class as agricultural implements, other than hand, NOI, SU. | |
| 8920 | Agricultural Implements, other than hand, NOI: | |
| Sub 1 | In boxes or crates, subject to Item 170 and having a density in pounds per cubic foot of: | |
| Sub 2 | Less than 8 | 200 |
| Sub 3 | 8 or greater | 85 |
| Sub 4 | Other than in boxes or crates, subject to Item 170 and having a density in pounds per cubic foot of: | |
| Sub 5 | Less than 8 | 250 |
| Sub 6 | 8 or greater | 100 |
| 8950 | Attachments, rotary tilling or turf aerating (Rotary Tillers or Turf Aerators, other than self-propelled), in boxes or crates..... | 70 |
| 9110 | Choppers, Cutters, Pulverizers or Shredders, crop or stalk: | |
| Sub 1 | SU, with wheels on or off..... | 200 |
| Sub 2 | KD, see Note, item 9112; or with tongue or drawbar and power take-off removed, and levers or other projecting parts removed, folded or lowered, wheels on or off or without wheels..... | 85 |
| 9112 | NOTE—Also applies on accompanying accessorial blower and blow-pipe when detached and taken apart. | |
| 9310 | Crushers or Pulverizers, clod..... | 70 |
| 9320 | Cultivators, KD..... | 77.5 |
| 9340 | Cutters, ensilage or feed, NOI, with or without necessary equipment of blow pipes: | |
| Sub 1 | SU | 125 |
| Sub 2 | KD | 100 |
| 9385 | Distributors, dry fertilizer, broadcast, end gate, in packages | 85 |
| 9390 | Distributors, dry fertilizer, and grain or seed sowers combined, broadcast: | |
| Sub 1 | SU | 150 |
| Sub 2 | KD | 100 |
| 9395 | Distributors, dry fertilizer, NOI: | |
| Sub 1 | With handles: | |
| Sub 2 | KD, further than detaching of handles | 70 |
| Sub 3 | Wheels on or off, handles in bundles or detached and tied to frame | 85 |
| Sub 4 | Without handles: | |
| Sub 5 | SU..... | 150 |
| Sub 6 | Poles detached, wheels on or off..... | 85 |
| 9400 | Ditchers or Terracers, farm: | |
| Sub 1 | SU, wheels on or off..... | 100 |
| Sub 2 | KD | 70 |
| 9420 | Driers, crop, farm, wheels on or off or without wheels: | |
| Sub 1 | SU | 125 |
| Sub 2 | KD | 85 |
| 9450 | Drills or Planters, grain, peanut or seed and Fertilizer Distributors combined, SU, loose or in packages..... | 100 |
| 9625 | Harrows, chain type, with flexible tines, rolled, teeth points not exposed; or Parts thereof; loose | 77.5 |
| 9632 | Harrows, disc (disk), with or without sower attachments: | |
| Sub 1 | SU | 150 |
| Sub 2 | KD | 85 |
| 9660 | Harrows, spring tooth or peg tooth, KD, in packages, teeth points not exposed | 85 |
| 9910 | Mesh, Netting or Wrap, hay baling or binding, plastic, in packages | 70 |
| 9920 | Mills, feed, farm, see Note, item 9922 | 85 |
| 9922 | NOTE—Provisions include not to exceed 50 feet of blow pipe for each mill and not to exceed one air separator or feed collector for each mill. | |
| 9970 | Pickups, windrow: | |
| Sub 1 | SU | 110 |
| Sub 2 | KD | 77.5 |
| 10020 | Planters, grass sprig, with or without fertilizer attachments | 100 |
| 10025 | Planters, potato | 85 |
| 10040 | Plows: | |
| Sub 1 | SU | 100 |
| Sub 2 | KD, see Note, item 10042 | 70 |
| 10042 | NOTE—Plows, KD, must have levers laid down flat and tied to frame, or detached, and coulter blades, handles, poles, seats, singletrees, doubletrees, eveners and wheels detached. | |
| 10090 | Presses, hay | 85 |
| 10100 | Pulverizer and Seeder combined, KD | 70 |

FREIGHT CLASSIFICATION DOCKET 2024-1

| ITEM | ARTICLE | CLASS |
|-------|---|-------|
| | AGRICULTURAL IMPLEMENTS, OTHER THAN HAND, GROUP: subject to item 8900 | |
| 10120 | Rakes, KD: | |
| Sub 1 | Teeth attached and not folded | 100 |
| Sub 2 | Teeth detached; or teeth attached and folded | 70 |
| 10220 | Sowers or Distributors, grain, seed or fertilizer, broadcast: | |
| Sub 1 | KD | 85 |
| Sub 2 | SU | 110 |
| 10250 | Sprayers, field, self-propelled, straddle type | 200 |
| 10255 | Spreaders, manure, wheeled: | |
| Sub 1 | SU, wheels on or off, power take-off shaft, hitch or pole detached | 150 |
| Sub 2 | KD beyond having wheels and power take-off shaft, hitch or pole detached, in packages | 85 |
| 10320 | Threshers (Separators) or Harvesters-Threshers (Combines), NOI, Clover Hullers or Corn Shellers | 100 |
| 10370 | Twine, baler or binder, in packages | 60 |
| 10382 | Unloaders, silo, KD | 70 |
| | AGRICULTURAL IMPLEMENT PARTS GROUP: subject to item 10540 | |
| 10550 | Agricultural Implement Parts, other than hand, NOI, other than tanks or hoppers, in packages | 92.5 |
| 10560 | Agricultural Implement Parts, other than hand, NOI, iron, see Note, item 10562: | |
| Sub 1 | Weighing each less than 50 pounds: | |
| Sub 2 | Loose | 100 |
| Sub 3 | In packages | 77.5 |
| Sub 4 | Weighing each 50 pounds or over | 77.5 |
| 10562 | NOTE—Also applies on parts made of a combination of iron or steel and other materials, or mixed packages of iron or steel parts and parts made of other materials, provided the weight of the other materials does not exceed 20 percent of the total weight of such combined products or such mixed packages. | |
| 10570 | Agricultural Implement Parts, other than hand, NOI, other than tanks or hoppers; plastic or rubber; plastic or rubber combined with less than 80 percent by weight of steel; plastic or rubber combined with metal other than steel; or plastic or rubber combined with fiber, paper or cloth; in packages | 85 |
| 10580 | Agricultural Implement Parts, other than hand, NOI, wooden: | |
| Sub 1 | Finished, in packages | 85 |
| Sub 2 | In the white, in packages | 60 |
| 10600 | Aprons or Apron Belting, Straps or Buckles, in packages | 85 |
| 10660 | Beams, Tool Bars or Tool Bar Carriers, iron or steel: | |
| Sub 1 | Wheeled, SU, loose or in packages | 150 |
| Sub 2 | Wheeled, KD, or other than wheeled, loose or in packages | 70 |
| 10720 | Blades or Points, grain or seed drill, in boxes or drums | 85 |
| 10740 | Boxes or Spools, harrow, in bags, boxes or drums | 70 |
| 10760 | Bunchers or Windrowers for mowers: | |
| Sub 1 | KD, in packages | 100 |
| Sub 2 | SU | 200 |
| 10840 | Cutter Bars, with or without knife sections, in Package 2074 | 85 |
| 10880 | Discs or Rolling Coulter Blades: | |
| Sub 1 | In boxes, crates, drums or in packages consisting of not more than 10 discs, nested, cutting edges completely enclosed by band of steel, not less than 22 gauge, securely pressed and crimped at least 1/2 inch around the top and bottom discs | 60 |
| Sub 2 | Loose | 77.5 |
| 10900 | Discs and Drag Bars combined: | |
| Sub 1 | Loose or in bundles | 100 |
| Sub 2 | In boxes, crates or drums | 70 |
| 10960 | Guards, knife, with or without guard plates attached, in bags, boxes or drums | 70 |
| 10980 | Guards or Plates, grain lifter, in packages | 70 |
| 11020 | Handles, iron: | |
| Sub 1 | Loose | 77.5 |
| Sub 2 | In packages | 60 |
| 11030 | Handles, wooden: | |
| Sub 1 | Finished, in packages | 85 |
| Sub 2 | In the white | 60 |
| 11050 | Harrow Frames: | |
| Sub 1 | KD, in packages | 70 |
| Sub 2 | SU | 100 |
| 11060 | Heads, corn pickup, harvester-thresher (combine) | 200 |
| 11070 | Hoists, hay press, KD, in bundles | 85 |

FREIGHT CLASSIFICATION DOCKET 2024-1

| ITEM | ARTICLE | CLASS |
|--------|--|-------|
| | AGRICULTURAL IMPLEMENT PARTS GROUP: subject to item 10540 | |
| 11080 | Housings, Shrouds or Hoods, in packages, subject to Item 170 and having a density in pounds per cubic foot of: | |
| Sub 1 | Less than 1 | 400 |
| Sub 2 | 1 but less than 2..... | 300 |
| Sub 3 | 2 but less than 4..... | 250 |
| Sub 4 | 4 but less than 6..... | 175 |
| Sub 5 | 6 but less than 8..... | 125 |
| Sub 6 | 8 but less than 10..... | 100 |
| Sub 7 | 10 but less than 12..... | 92.5 |
| Sub 8 | 12 but less than 15..... | 85 |
| Sub 9 | 15 but less than 22.5..... | 70 |
| Sub 10 | 22.5 but less than 30..... | 65 |
| Sub 11 | 30 or greater | 60 |
| 11110 | Knives or Knife Sections, in boxes, or in packages with cutting edges protected | 70 |
| 11130 | Pitmans, in packages..... | 70 |
| 11140 | Plates or Spacers, NOI, cutter bar, in packages | 70 |
| 11150 | Plow Bottoms | 77.5 |
| 11170 | Plow or Cultivator Parts, iron, NOI: | |
| Sub 1 | In packages; or loose if weighing each 15 pounds or over..... | 60 |
| Sub 2 | Weighing each less than 15 pounds, loose | 100 |
| 11220 | Potato Digger Parts, iron, NOI, in packages..... | 77.5 |
| 11240 | Rasps or Spikes (Teeth) for clover hullers or threshers, in boxes, crates or drums | 70 |
| 11250 | Reels, pickup or cleaning, harvester-thresher (combine), binder or windrow harvester, SU, loose | 300 |
| 11260 | Rollers, harvester-thresher, or cotton or corn picker, rubber or rubber covered steel, new or with new covering, in packages..... | 70 |
| 11280 | Runners or Shoes, harrow, iron, in packages..... | 70 |
| 11300 | Screens (Sieves), for threshers, in boxes, crates or wrapped in fiberboard | 70 |
| 11370 | Spikes or Teeth, harrow | 60 |
| 11410 | Teeth, hay stacker or rake, in packages | 70 |
| 11470 | Trays, tool or harrow weight, iron, in packages..... | 70 |
| 11490 | Tubes, grain drill, rubber, in packages..... | 85 |
| 11500 | Tubes, grain drill, steel, flexible, in boxes, crates or drums | 70 |
| 11520 | Weights, wheel, iron, weighing each 25 pounds or over | 50 |
| 11540 | Wheels, iron, NOI, finished or not finished, with or without lubricators or bearing races, not including machine finished gear or sprocket wheels, see Note, item 11542, in packages: | |
| Sub 1 | With rubber tires..... | 85 |
| Sub 2 | Without rubber tires..... | 70 |
| 11542 | NOTE—Includes necessary wheel attachments, namely bolts, nuts, lugs, rings, hub extensions, counterweights, rims, rim tools, hub caps and wrenches and hub and drum assembly. | |
| 53390 | Cord, Cordage, Rope, other than wire rope, String or Twine, NOI, see Note, item 53392, in boxes or on reels, subject to Item 170 and having a density in pounds per cubic foot of: | |
| Sub 1 | Less than 10 | 125 |
| Sub 2 | 10 but less than 15 | 85 |
| Sub 3 | 15 or greater | 70 |
| 53392 | NOTE—Does not apply on commodities represented as 'ribbon,' 'thread' or 'yarn.' | |

FREIGHT CLASSIFICATION DOCKET 2024-1

| ITEM | ARTICLE | CLASS |
|--------|---|-------|
| 156600 | <p>PLASTIC OR RUBBER ARTICLES GROUP: subject to item 156500</p> <p>Articles, see Note, item 156601, viz.:</p> <p>Articles, NOI;</p> <p>Bands, elastic, including Rubber Bands;</p> <p>Baskets, Holders or Filters, coffee, automatic coffee maker, plastic and cloth combined;</p> <p>Bobbins; Cores, winding or filter; Cop Tubes; Dye Tubes; Pirns; Reels, NOI; or Spools;</p> <p>Car Seats, child or baby;</p> <p>Columns; or other Forms or Shapes, NOI; architectural;</p> <p>Containers, packaging, NOI;</p> <p>Dinnerware or Tableware, NOI;</p> <p>Faucets, NOI, or Bibcocks;</p> <p>Film or Sheeting, foam, cellular, expanded or sponge plastic or rubber, NOI;</p> <p>Garbage, Waste, Refuse or Recycling Cans or Containers;</p> <p>Gloves, see Note, item 156604;</p> <p>Grips, NOI, including Golf Club, Hand Tool or Handlebar Grips;</p> <p>Liners, swimming pool, plastic film or sheeting;</p> <p>Materials, Forms or Shapes, foam, cellular, expanded or sponge plastic or rubber, NOI;</p> <p>Mats, bathtub, shower stall, drainboard, sink or stove protector;</p> <p>Molding, facing, baseboard or cove, foam, cellular, expanded or sponge plastic or rubber, including Ceiling Medallions or Cornices;</p> <p>Molding, other than facing, baseboard or cove;</p> <p>Pipe or Pipe Fittings;</p> <p>Poultry Watering Systems, see Note, item 156603;</p> <p>Straps, Bungee Cord or Shock Cord, lashing, tying or securing, with or without hooks or other fasteners or fittings;</p> <p>Tanks, NOI;</p> <p>Tape, NOI;</p> <p>Tips, crutch or furniture;</p> <p>Tire Patches, Plugs or Liners;</p> <p>Tractor Treads, rubber;</p> <p>Traffic or Road Markers, including Cones, Barrels, Drums or Posts;</p> <p>Tubing, NOI, other than flexible;</p> <p>In boxes, crates, drums or Packages 1078, 1241, 1273 or 2213, see Note, item 156602, subject to Item 170 and having a density in pounds per cubic foot of:</p> | |
| Sub 1 | Less than 1 | 400 |
| Sub 2 | 1 but less than 2 | 300 |
| Sub 3 | 2 but less than 4 | 250 |
| Sub 4 | 4 but less than 6 | 175 |
| Sub 5 | 6 but less than 8 | 125 |
| Sub 6 | 8 but less than 10 | 100 |
| Sub 7 | 10 but less than 12 | 92.5 |
| Sub 8 | 12 but less than 15 | 85 |
| Sub 9 | 15 but less than 22.5 | 70 |
| Sub 10 | 22.5 but less than 30 | 65 |
| Sub 11 | 30 or greater | 60 |
| 156601 | NOTE—Except as otherwise specified, this item applies on plastic or rubber articles whether or not of foam, cellular, expanded or sponge construction. | |
| 156602 | <p>NOTE—The following departures from packing requirements are permitted:</p> <ol style="list-style-type: none"> 1. Necks of empty carboys may project from boxes or crates. 2. Rigid plastic pipe or tubing, or tubes other than containers, may be shipped in packages with threaded or belled ends protected. 3. Flexible plastic pipe or tubing, or tubes other than containers, may be shipped in coils with threaded or belled ends protected, or on reels. 4. Plastic pipe fittings may be shipped in packages with threaded or belled ends protected. 5. Flexible plastic fencing or mesh, produced by a stretching and extruding process, may be shipped in bundles or rolls. 6. Swimming pool and pond liners may be shipped in bundles or rolls. 7. Plastic plate or sheet with formed interior cells, cavities or flutes may be shipped securely fastened to lift truck skids, pallets or platforms and must not overhang the edges of the lift truck skid, pallet or platform deck. Exposed surfaces and edges must be completely wrapped with plastic film or corrugated fiberboard or protected by wood or similar material. 8. Cups or tumblers, without handles, may be shipped in Packages 2471 or 2505. 9. Not currently used. 10. The following articles may be shipped in packages: <ol style="list-style-type: none"> a. Garbage, waste, refuse or recycling cans or containers; b. Plastic bottle carrying boxes or crates; c. Plastic tanks, other than outer shipping containers; d. Poultry watering systems. e. Traffic or road markers, including cones, barrels, drums or posts. | |
| 156603 | NOTE—Applies on poultry watering systems consisting of pipe, plastic drinkers, water filtering, metering or regulating devices and equipment necessary for installation, with or without other components or accessories. | |
| 156604 | NOTE—Does not apply on any commodity which is defined and specified as medical waste in Federal regulations. For applicable class, see item 101682. | |

| ITEM | ARTICLE | CLASS |
|---------|--|-------|
| | AGRICULTURAL IMPLEMENTS, OTHER THAN HAND, GROUP: subject to item 8900 | |
| 8902-A | NOTE—☒Cancel; see item B-NEW. | |
| 8904-A | NOTE—☒Cancel; no further application. | |
| 8920-A | Agricultural Implements , other than hand, NOI, etc...☒Cancel; see A-NEW. | |
| 8950-A | Attachments , rotary tilling or turf aerating (Rotary Tillers or Turf Aerators , other than self-propelled), etc...☒Cancel; see item A-NEW. | |
| 9110-A | Choppers, Cutters, Pulverizers or Shredders , crop or stalk, etc...☒Cancel; see item A-NEW. | |
| 9112-A | NOTE—☒Cancel; no further application. | |
| 9310-A | Crushers or Pulverizers , clod...☒Cancel; see item A-NEW. | |
| 9320-A | Cultivators , KD...☒Cancel; see item A-NEW | |
| 9340-A | Cutters , ensilage or feed, NOI, etc...☒Cancel; see item A-NEW. | |
| 9385-A | Distributors , dry fertilizer, broadcast, end gate, etc...☒Cancel; see item A-NEW. | |
| 9390-A | Distributors , dry fertilizer, and grain or seed sowers combined, broadcast, etc...☒Cancel; see item A-NEW: | |
| 9395-A | Distributors , dry fertilizer, NOI, etc...☒Cancel; see item A-NEW. | |
| 9400-A | Ditchers or Terracers , farm, etc...☒Cancel; see item A-NEW. | |
| 9420-A | Driers , crop, farm, wheels on or off or without wheels, etc...☒Cancel; see item A-NEW. | |
| 9450-A | Drills or Planters , grain, peanut or seed and Fertilizer Distributors combined , etc...☒Cancel; see item A-NEW. | |
| 9625-A | Harrows , chain type, with flexible tines, rolled, teeth points not exposed, etc...☒Cancel; see item A-NEW. | |
| 9632-A | Harrows , disc (disk), with or without sower attachments, etc...☒Cancel; see item A-NEW. | |
| 9660-A | Harrows , spring tooth or peg tooth, KD, in packages, teeth points not exposed...☒Cancel; see item A-NEW. | |
| 9910-A | Mesh, Netting or Wrap , hay baling or binding, plastic, etc...☒Cancel; see item 156600. | |
| 9920-A | Mills , feed, farm, etc...☒Cancel; see item A-NEW. | |
| 9922-A | NOTE—☒Cancel; no further application. | |
| 9970-A | Pickups , windrow, etc...☒Cancel; see item A-NEW. | |
| 10020-A | Planters , grass sprig, etc...☒Cancel; see item A-NEW. | |
| 10025-A | Planters , potato...☒Cancel; see item A-NEW. | |
| 10040-A | Plows ,etc...☒Cancel; see item A-NEW. | |
| 10042-A | NOTE—☒Cancel; no further application. | |
| 10090-A | Presses , hay...☒Cancel; see item A-NEW. | |
| 10100-A | Pulverizer and Seeder combined , etc...☒Cancel; see item A-NEW. | |
| 10120-A | Rakes , etc...☒Cancel; see item A-NEW. | |
| 10220-A | Sowers or Distributors , grain, seed or fertilizer, broadcast, etc...☒Cancel; see item A-NEW. | |
| 10250-A | Sprayers , field, self-propelled, straddle type...☒Cancel; see item 177680. | |
| 10255-A | Spreaders , manure, wheeled, etc...☒Cancel; see item A-NEW. | |
| 10320-A | Threshers (Separators) or Harvesters-Threshers (Combines) , NOI, Clover Hullers or Corn Shellers ...☒Cancel; see item A-NEW. | |
| 10370-A | Twine , baler or binder, etc...☒Cancel; see item 53390. | |
| 10382-A | Unloaders , silo, etc...☒Cancel; see item A-NEW. | |
| | AGRICULTURAL IMPLEMENT PARTS GROUP: subject to item 10540 | |
| 10550-A | Agricultural Implement Parts , other than hand, NOI, other than tanks or hoppers, etc...☒Cancel; see item A-NEW. | |
| 10560-A | Agricultural Implement Parts , other than hand, NOI, iron, etc...☒Cancel; see item A-NEW. | |
| 10562-A | NOTE—☒Cancel; no further application. | |
| 10570-A | Agricultural Implement Parts , other than hand, NOI, other than tanks or hoppers; plastic or rubber, etc...☒Cancel; see item A-NEW. | |
| 10580-A | Agricultural Implement Parts , other than hand, NOI, wooden, etc...☒Cancel; see item A-NEW. | |
| 10600-A | Aprons or Apron Belting, Straps or Buckles , etc...☒Cancel; see item A-NEW. | |
| 10660-A | Beams, Tool Bars or Tool Bar Carriers , iron or steel, etc...☒Cancel; see item A-NEW. | |
| 10720-A | Blades or Points , grain or seed drill, etc...☒Cancel; see item A-NEW. | |
| 10740-A | Boxes or Spools , harrow, etc...☒Cancel; see item A-NEW. | |
| 10760-A | Bunchers or Windrowers for mowers, etc...☒Cancel; see item A-NEW. | |
| 10840-A | Cutter Bars , with or without knife sections, etc...☒Cancel; see item A-NEW. | |
| 10880-A | Discs or Rolling Coulter Blades , etc...☒Cancel; see item A-NEW. | |
| 10900-A | Discs and Drag Bars combined , etc...☒Cancel; see item A-NEW. | |
| 10960-A | Guards , knife, with or without guard plates attached, etc...☒Cancel; see item A-NEW. | |
| 10980-A | Guards or Plates , grain lifter, etc...☒Cancel; see item A-NEW. | |
| 11020-A | Handles , iron, etc...☒Cancel; see item A-NEW. | |
| 11030-A | Handles , wooden, etc...☒Cancel; see item A-NEW. | |
| 11050-A | Harrow Frames, etc ...☒Cancel; see item A-NEW. | |
| 11060-A | Heads , corn pickup, harvester-thresher (combine)...☒Cancel; see item A-NEW. | |
| 11070-A | Hoists , hay press, etc...☒Cancel; see item A-NEW. | |
| 11080-A | Housings, Shrouds or Hoods , etc...☒Cancel; see item A-NEW. | |
| 11110-A | Knives or Knife Sections , etc...☒Cancel; see item A-NEW. | |
| 11130-A | Pitmans , etc...☒Cancel; see item A-NEW. | |
| 11140-A | Plates or Spacers , NOI, cutter bar, etc...☒Cancel; see item A-NEW. | |
| 11150-A | Plow Bottoms ...☒Cancel; see item A-NEW. | |
| 11170-A | Plow or Cultivator Parts , iron, NOI, etc...☒Cancel; see item A-NEW. | |
| 11220-A | Potato Digger Parts , iron, NOI, etc...☒Cancel; see item A-NEW. | |
| 11240-A | Rasps or Spikes (Teeth) for clover hullers or threshers, etc...☒Cancel; see item A-NEW. | |
| 11250-A | Reels , pickup or cleaning, harvester-thresher (combine), binder or windrow harvester, etc...☒Cancel; see item A-NEW. | |

FREIGHT CLASSIFICATION DOCKET 2024-1

| ITEM | ARTICLE | CLASS |
|---------|--|-------|
| | AGRICULTURAL IMPLEMENT PARTS GROUP: subject to item 10540 | |
| 11260-A | Rollers , harvester-thresher, or cotton or corn picker, rubber or rubber covered steel, new or with new covering, etc... <input type="checkbox"/> Cancel; see item A-NEW. | |
| 11280-A | Runners or Shoes , harrow, iron, etc... <input type="checkbox"/> Cancel; see item A-NEW. | |
| 11300-A | Screens (Sieves) , for threshers, etc... <input type="checkbox"/> Cancel; see item A-NEW. | |
| 11370-A | Spikes or Teeth , harrow... <input type="checkbox"/> Cancel; see item A-NEW. | |
| 11410-A | Teeth , hay stacker or rake, etc... <input type="checkbox"/> Cancel; see item A-NEW. | |
| 11470-A | Trays , tool or harrow weight, iron, etc... <input type="checkbox"/> Cancel; see item A-NEW. | |
| 11490-A | Tubes , grain drill, rubber, etc... <input type="checkbox"/> Cancel; see item A-NEW. | |
| 11500-A | Tubes , grain drill, steel, flexible, etc... <input type="checkbox"/> Cancel; see item A-NEW. | |
| 11520-A | Weights , wheel, iron, weighing each 25 pounds or over... <input type="checkbox"/> Cancel; see item A-NEW. | |
| 11540-A | Wheels , iron, NOI, finished or not finished, with or without lubricators or bearing races, not including machine finished gear or sprocket wheels, etc... <input type="checkbox"/> Cancel; see item A-NEW. | |
| 11542-A | NOTE— <input type="checkbox"/> Cancel; no further application. | |
| △53390 | Cord, Cordage, Rope , other than wire rope, String or Twine , NOI, see Note, item 53392, in boxes or on reels, subject to Item 170 and having a density in pounds per cubic foot of: | |
| Sub 1 | Less than 10..... | 125 |
| Sub 2 | 10 but less than 15..... | 85 |
| Sub 3 | 15 or greater..... | 70 |
| △53392 | NOTE—Does not apply on commodities represented as 'ribbon,' 'thread' or 'yarn.' | |
| | MACHINERY GROUP: subject to item 114000 | |
| ★A-NEW | Agricultural Implements , other than hand, or Parts thereof , see Note, item B-NEW, viz.: Agricultural Implements , other than hand, NOI; Attachments , tow-behind, NOI; Cutters , NOI; Distributors, Planters, Sowers or Spreaders , fertilizer or seed, NOI; Driers , crop; Mills , feed; Parts , agricultural implement, other than hand, NOI; Pickups , windrow; Plows , NOI; Presses , hay; Unloaders , silo; | |
| Sub 1 | In boxes or crates, subject to Item 170 and having a density in pounds per cubic foot of: | |
| Sub 2 | Less than 8..... | 175 |
| Sub 3 | 8 but less than 12..... | 100 |
| Sub 4 | 12 but less than 22.5..... | 70 |
| Sub 5 | 22.5 or greater..... | 60 |
| Sub 6 | In packages other than boxes or crates, see Note, item C-NEW, subject to Item 170 and having a density in pounds per cubic foot of: | |
| Sub 7 | Less than 8..... | 200 |
| Sub 8 | 8 but less than 12..... | 110 |
| Sub 9 | 12 but less than 22.5..... | 77.5 |
| Sub 10 | 22.5 or greater..... | 65 |
| ★B-NEW | NOTE—Also applies on accompanying tools necessary for the adjustment and operation of the agricultural implement with which shipped. | |
| ★C-NEW | NOTE—Articles tendered for shipment on lift truck skids, pallets or platforms must be securely fastened to and must not overhang the edges of the lift truck skid, pallet or platform deck. Exposed surfaces and edges must be protected by packing forms or other packaging materials so as to withstand the normal rigors of the less-than-truckload environment. | |

FREIGHT CLASSIFICATION DOCKET 2024-1

| ITEM | ARTICLE | CLASS |
|---|--|--|
| △177680 Sub 1 Sub 2 Sub 3 Sub 4 Sub 5 Sub 6 △177682 △177684 | <p>Sprayers, NOI, see Note, item 177682; Steam or Water Cleaning Outfits, separate or combined; or Snowmaking Machines; wheeled; trailer mounted; with integral skid bases; or for trailer, vehicle, aircraft or wheel mounting; with or without engines:</p> <p>In boxes or crates, subject to Item 170 and having a density in pounds per cubic foot of:</p> <p> Less than 8.....</p> <p> 8 or greater.....</p> <p>In packages other than boxes or crates, see Note, item 177684, subject to Item 170 and having a density in pounds per cubic foot of:</p> <p> Less than 8.....</p> <p> 8 or greater.....</p> <p>NOTE—Applies on sprayers of liquids or powders.</p> <p>NOTE—Small detachable parts must be in boxes or in sprayer barrel or tank.</p> | <p>150</p> <p>92.5</p> <p>250</p> <p>110</p> |