

SUBJECT 1

Re: Foodstuffs Group

Contact: Larissa A. Franklin

Telephone — (703) 838-1824

franklin@nmfta.org

Proponent: Freight Classification Development Council

Present Classification Provisions

See Appendix A herein.

Proposed Classification Provisions

See Appendix B herein.

Analysis

Introduction

As a result of action taken on Docket 2023-3, Subject 1, 74 items subject to the Foodstuffs Group were canceled with reference to the full-scale, density-based provisions of item 73260, and to other applicable NMFC items, to simplify and clarify provisions applying on various types of foodstuffs. This proposal is a continuation of that simplification of the Foodstuffs Group and seeks to consolidate and streamline most remaining items in this generic heading. While many of the involved commodities exhibit a wide range of densities, other commodities such as canned or preserved fruits or vegetables, as named in item 73365, molasses or syrups, as named in items 74095, and sauces condiments, dips, spreads or butters, as named in items 72285, 74620 and 74700, exhibit narrower density distributions at the higher end of the Classification density scale. The transportation characteristics below relate to the items shown in the Present Classification Provisions herein.

Transportation Characteristics

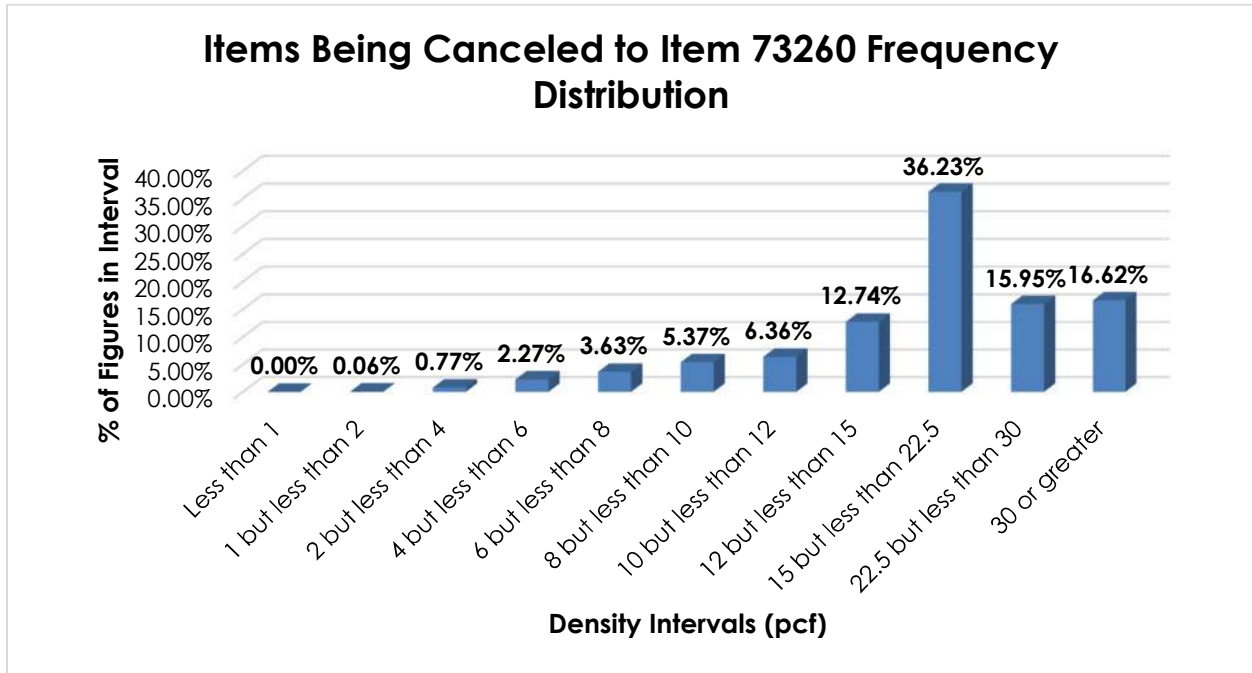
Density—The information of record includes 165,549 density observations obtained from the FCDC's Density Study¹. The densities range from 0.96 to 82.82 pcf, with an overall average density of 23.51 pcf.

The graphs and the tables on the following pages show the frequency distributions, density ranges, averages and concentrations of density observations for the proposed provisions.

¹ The Density Study is part of an ongoing effort by the FCDC to collect information on actual shipments across all product categories handled by the LTL industry. Carriers that choose to participate in the Study periodically submit shipment data captured through their respective freight auditing programs. The FCDC uses verifiable data points, identified by NMFC item, that include the weight and the dimensions and/or cube of the shipping unit.

SUBJECT 1

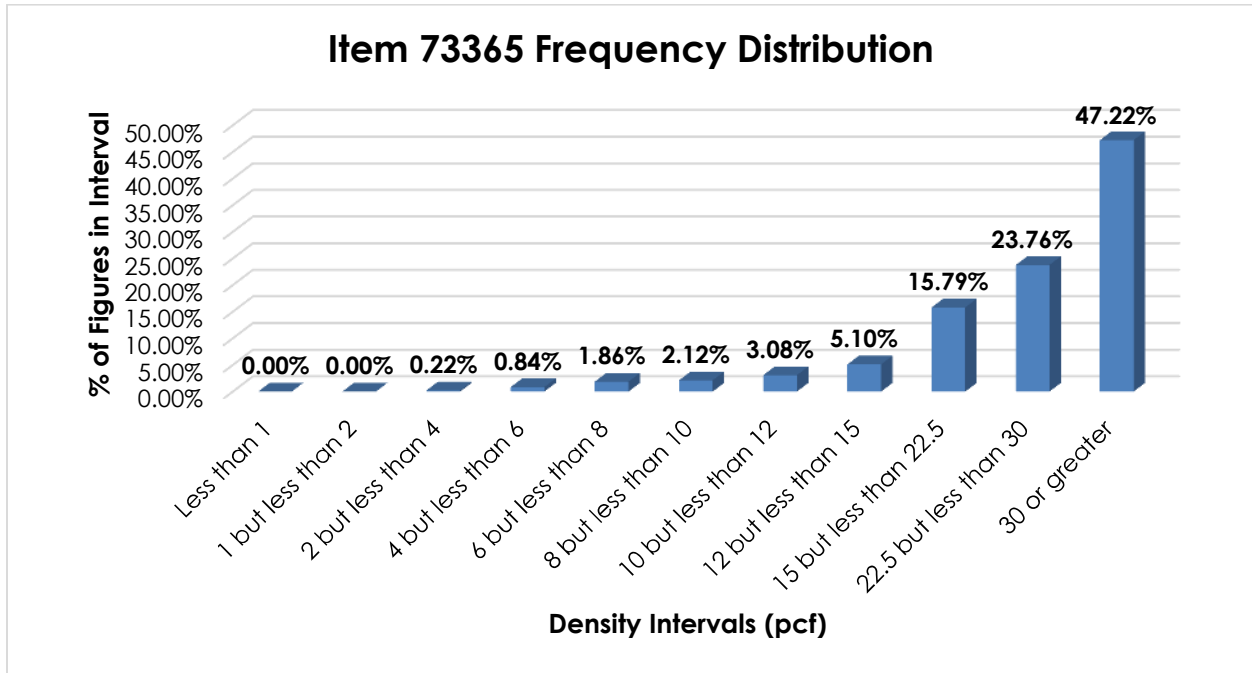
The information of record on commodities moving under items 72310, 72747, 72935, 72960, 72970, 73250, 73770, 73840, 73860, 73990, 74020, 74030, 74035 and 74840 includes 82,077 density observations. The densities range from 1.12 to 61.48 pcf, with an overall average density of 20.19 pcf. As shown in the graph below, there is a distinct peak in the 15 but less than 22.5 pcf interval with relatively uniform clustering in the surrounding intervals.



THIS SPACE INTENTIONALLY LEFT BLANK

SUBJECT 1

The information of record on commodities moving under item 73365 includes 15,014 density observations. The densities range from 2.19 to 82.82 pcf, with an overall average density of 28.47 pcf. As shown in the graph below, the density distribution is left-skewed, with over 86% of the figures being 15 pcf or greater. Density breaks at 22.5 and 30 pcf reflect the modality and spread of the distribution.



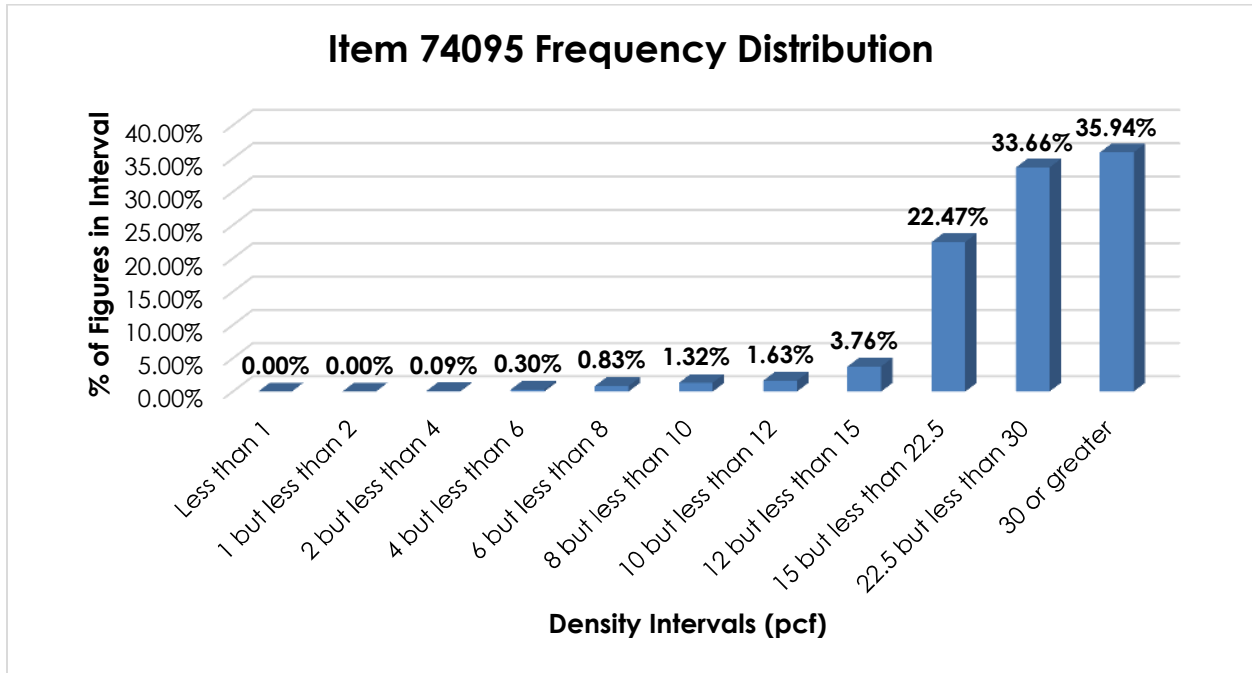
When the data is evaluated based on the proposed density breaks at 22.5 and 30 pcf, the density ranges and averages shown in the table below emerge.

| Density Groups (pcf) | Density Range (pcf) | Average Density (pcf) |
|-----------------------|---------------------|-----------------------|
| Less than 22.5 | 2.19 – 22.49 | 15.32 |
| 22.5 but less than 30 | 22.50 – 29.99 | 26.25 |
| 30 or greater | 30.00 – 82.82 | 37.67 |

THIS SPACE INTENTIONALLY LEFT BLANK

SUBJECT 1

The information of record on commodities moving under item 74095 includes 13,225 density observations. The densities range from 2.10 to 68.32 pcf, with an overall average density of 27.94 pcf. While the distribution shown in the graph below is clustered, the average density is not reflected in the predominant peak. Density breaks at 22.5 and 30 pcf reflect the modality and spread of the distribution.



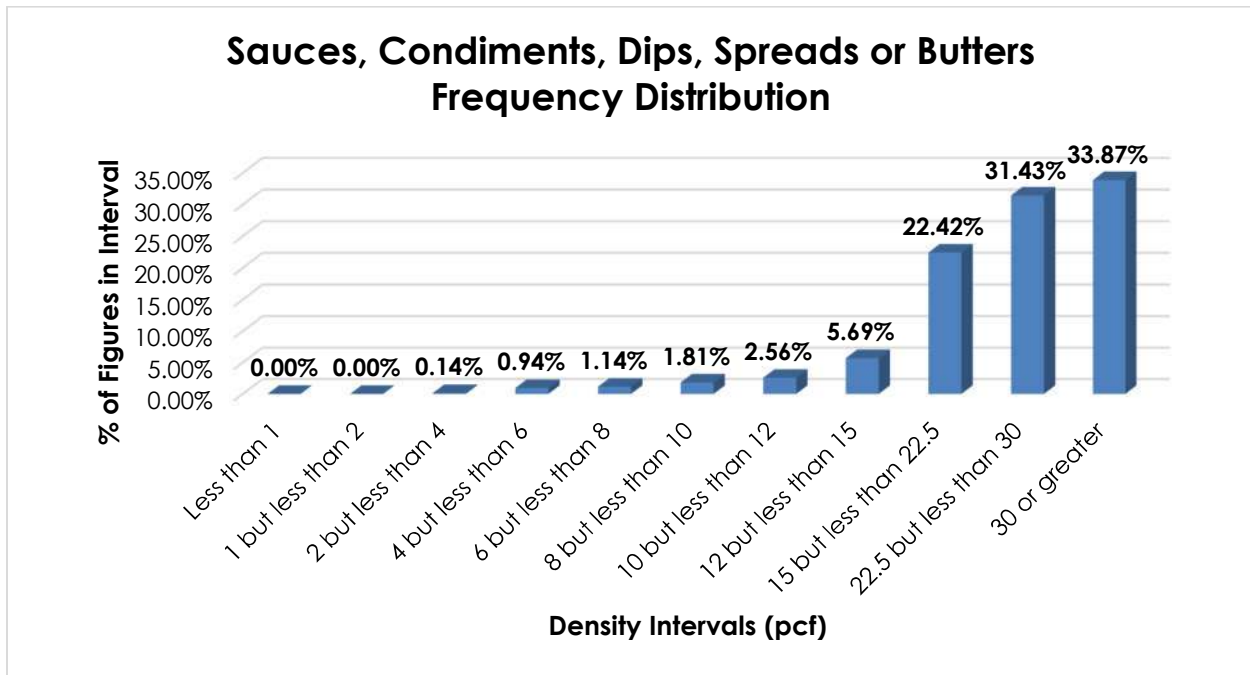
When the data is evaluated based on the proposed density breaks at 22.5 and 30 pcf, the density ranges and averages shown in the table below emerge.

| Density Groups (pcf) | Density Range (pcf) | Average Density (pcf) |
|-----------------------|---------------------|-----------------------|
| Less than 22.5 | 2.10 – 22.49 | 17.35 |
| 22.5 but less than 30 | 22.50 – 29.99 | 25.88 |
| 30 or greater | 30.00 – 68.32 | 38.81 |

THIS SPACE INTENTIONALLY LEFT BLANK

SUBJECT 1

The information of record on commodities moving under item 72285, 74620 and 74700 includes 55,228 density observations². The densities range from 2.33 to 70.68 pcf, with an overall average density of 26.05 pcf. While the distribution shown in the graph below is clustered, the average density is not reflected in the predominant peak. Density breaks at 22.5 and 35 pcf reflect the modality and spread of the distribution.



When the data is evaluated based on the proposed density breaks at 22.5 and 35 pcf, the density ranges and averages shown in the table below emerge.

| Density Groups (pcf) | Density Range (pcf) | Average Density (pcf) |
|-----------------------|---------------------|-----------------------|
| Less than 22.5 | 2.33 – 22.49 | 16.12 |
| 22.5 but less than 35 | 22.50 – 34.99 | 28.50 |
| 35 or greater | 35.00 – 70.68 | 39.69 |

Handling, Stowability and Liability—Care must be taken to avoid stowing the involved commodities with hazardous materials or other freight that may pose a contamination risk. They may also be damaged by freight with which stowed or by the elements. However, there have been no reports of unusual or significant handling, stowability or liability issues.

² The data also includes observations represented as “Fruit Butter or Pulp” and “Jams, Jellies, Marmalades or Preserves” currently moving under item 73365.

SUBJECT 1

Conclusion

Based on the foregoing analysis, this proposal would cancel items 72310, 72747, 72935, 72960, 72970, 73250, 73770, 73840, 73860, 73990, 74020, 74030, 74035 and 74840 with reference to full-scale, density-based provisions of item 73260³. Concurrently, the “viz.” listing in item 73260 would be amended for clarification and simplification.

Item 73365 would be amended to provide classes predicated on density, with breaks at 22.5 and 30 pcf⁴, as shown in the table below.

| Density Groups (pcf) | Average Density (pcf) | FCDC Minimum Average Density Guideline (pcf) | Class based on FCDC Density Guidelines |
|-----------------------|-----------------------|--|--|
| Less than 22.5 | 15.32 | 15 | 70 |
| 22.5 but less than 30 | 26.25 | 22.5 | 65 |
| 30 or greater | 37.67 | 35 | 55 |

Item 74095 would be amended to provide classes predicated on density, with breaks at 22.5 and 30 pcf⁴, as shown in the table below.

| Density Groups (pcf) | Average Density (pcf) | FCDC Minimum Average Density Guideline (pcf) | Class based on FCDC Density Guidelines |
|-----------------------|-----------------------|--|--|
| Less than 22.5 | 17.35 | 15 | 70 |
| 22.5 but less than 30 | 25.88 | 22.5 | 65 |
| 30 or greater | 38.81 | 35 | 55 |

Items 72285 and 74620 would be canceled with reference to item 74700⁵, which would be amended to read, “Sauces, Condiments, Dips, Spreads or Butters.” The “viz.” listing in item 74700 would be amended for clarification and simplification, and item 74700 would provide classes predicated on density, with breaks at 22.5 and 35 pcf⁴, as shown in the table below.

| Density Groups (pcf) | Average Density (pcf) | FCDC Minimum Average Density Guideline (pcf) | Class based on FCDC Density Guidelines |
|-----------------------|-----------------------|--|--|
| Less than 22.5 | 16.12 | 15 | 70 |
| 22.5 but less than 35 | 28.50 | 22.5 | 65 |
| 35 or greater | 39.69 | 35 | 55 |

³ Item 73260 provides the FCDC’s standard 11-subprovision density scale, which includes reference to Item (Rule) 170, the inadvertence clause.

⁴ The density provisions would include reference to Item (Rule) 170, the inadvertence clause.

⁵ It is proposed to classify “Fruit Butter or Pulp” and “Jams, Jellies, Marmalades or Preserves,” as currently embraced by item 73365, under item 74700. Note, item 73366 would be amended accordingly.

SUBJECT 1

Items 74043, 74045 and 75100 would be canceled with reference to item 73150⁶. The "viz." listing in item 73150 would also be amended for clarification and simplification. Additionally, item 74580 would be canceled with reference to item 89230, and the "viz." listing in item 89230 would be amended accordingly.

Item 72180 would be canceled as obsolete.

Notes, items 72311, 72749, 72961 and 74032 would be canceled with no further application. Note, item 72748 would be canceled with reference to a new Note attendant to item 73260, and Note, item 75101 would be canceled with reference to a new Note attendant to item 73150.

⁶ The density provisions include reference to Item (Rule) 170, the inadvertence clause.

FREIGHT CLASSIFICATION DOCKET 2024-1

| ITEM | ARTICLE | CLASS |
|-------|--|-------|
| | FOODSTUFFS GROUP: subject to item 72000 | |
| 72180 | Beverages or Foods , canned, jacketed by cans containing chemical heating element, with or without water, in boxes | 70 |
| 72285 | Butters or Spreads , nut or seed, including Peanut Butter , in boxes: | |
| Sub 1 | Powdered..... | 77.5 |
| Sub 2 | NOI | 65 |
| 72310 | Cereals, viz.: | |
| | Baby Cereals; | |
| | Cereals , NOI, ready-to-eat, including Granola , see Note, item 72311; | |
| | Cereals , NOI, requiring further cooking or heating (Hot Cereals); | |
| | Oatmeal or Porridge , including Mush ; | |
| | In bags, boxes, drums or Packages 128, 2231, 2465, 2470 or 2493, subject to Item 170 and having a density in pounds per cubic foot of: | |
| Sub 1 | Less than 8..... | 150 |
| Sub 2 | 8 but less than 12 | 100 |
| Sub 3 | 12 or greater..... | 70 |
| 72311 | NOTE—The term 'ready-to-eat cereals' refers to prepared cereals ready for human consumption without further cooking or heating. | |
| 72747 | Cultures , bacteria, including Starter Cultures , see Note, item 72748, in boxes, see Note, item 72749 | 85 |
| 72748 | NOTE—Applies on bacteria cultures, whether or not freeze-dehydrated or freeze-dried, used in the production of food or beverages. | |
| 72749 | NOTE—Bacteria cultures that require temperature control must be shipped in insulated packages containing sufficient refrigerant to maintain those temperatures during transport. | |
| 72935 | Fish , dried or dry salted, flaked or shaved, including Katsuobushi or Bonito Flakes , in boxes..... | 250 |
| 72960 | Fish or Shellfish , cooked, pickled, preserved or smoked, NOI, see Note, item 72961, in boxes, drums or Packages 2463 or 2498..... | 65 |
| 72961 | NOTE—Does not apply on fresh fish smoked for flavoring only. | |
| 72970 | Fish or Shellfish , dried or dry salted, NOI, in boxes, drums or Packages 2463 or 2498..... | 70 |
| 73150 | Flour, Meal or Sugar, viz.: | |
| | Flour , NOI; | |
| | Meal , NOI, including Corn Meal ; | |
| | Mixes , baking, NOI, including Bread, Brownie, Cake, Cookie, Muffin, Pancake or Waffle Mixes , see Note, item 73151; | |
| | Mixes , batter, breading or coating, NOI; | |
| | Sugar , NOI; | |
| | In bags, boxes, drums or Packages 128 or 2456, subject to Item 170 and having a density in pounds per cubic foot of: | |
| Sub 1 | Less than 10..... | 125 |
| Sub 2 | 10 but less than 15 | 85 |
| Sub 3 | 15 but less than 30 | 70 |
| Sub 4 | 30 or greater..... | 55 |
| 73151 | NOTE—Also applies on other ingredients or complement of accessories necessary for completion of the finished product when packaged in same box. | |
| 73250 | Foodstuffs , other than frozen, Group III, viz.: | |
| | Fish Balls; | |
| | Juice , clam or oyster; | |
| | Milk, Cream, Buttermilk or Dry Milk Solids , powdered or flaked, with or without vegetable fats not exceeding one percent by weight, also in multiple-wall paper bags; | |
| | In boxes, crates, drums or Packages 2463 or 2498..... | 60 |

FREIGHT CLASSIFICATION DOCKET 2024-1

| ITEM | ARTICLE | CLASS |
|-------|---|-------|
| 73260 | <p>FOODSTUFFS GROUP: subject to item 72000</p> <p>Foodstuffs, other than frozen, Group IV, viz.:</p> <p>Baby Food, NOI;</p> <p>Bakery Goods, NOI, also in Package 2428;</p> <p>Beverages or Drinks, NOI, or Beverage or Drink Preparations, NOI, see Note, item 73263, also in Packages 2330 or 2438;</p> <p>Coffee, Tea or Herbal Tea, NOI, see Note, item 73261, also in Packages 2330 or 2380;</p> <p>Cookies or Crackers, NOI, also in Package 2428;</p> <p>Cooking Spray, not required by the U.S. Department of Transportation to bear a Hazard Class or Hazard Division label or placard, see Note, item 73264;</p> <p>Desserts, Dessert Toppings or Related Foods, NOI, not required by the U.S. Department of Transportation to bear a Hazard Class or Hazard Division label or placard, see Note, items 73262 and 73264;</p> <p>Extracts, Flavoring Compounds, Imitation Flavors or Bottlers' Flavoring Compounds, NOI, not required by the U.S. Department of Transportation to bear a Hazard Class or Hazard Division label or placard, see Note, item 73264;</p> <p>Food Curing, Preserving or Seasoning Compounds, NOI;</p> <p>Foodstuffs, NOI, not required by the U.S. Department of Transportation to bear a Hazard Class or Hazard Division label or placard, see Note, item 73264;</p> <p>Gelatine or Pectin, NOI;</p> <p>Honey or Honeycomb, NOI;</p> <p>Hot Chocolate or Hot Cocoa Mixes;</p> <p>Juice, fruit or vegetable, including Juice Concentrates, Juice Beverages, Juice Drinks or Juice Powders or Crystals, see Note, item 73263, also in Packages 2438 or 2467;</p> <p>Oils, cooking or salad, NOI, or Vegetable Oil Shortening;</p> <p>Purees, fruit or vegetable, including Applesauce;</p> <p>Pasta or Noodles, with or without other ingredients;</p> <p>Rice, cleaned or prepared, NOI, with or without other ingredients;</p> <p>Shells, taco, or Tortillas;</p> <p>Snack Foods, NOI;</p> <p>Soups or Soup Mixes;</p> <p>Yeast, dry or liquid;</p> <p>In bags, boxes, drums or Packages 128, 223, 510, 1000, 1400, 1500, 2093, 2231, 2404, 2414, 2416, 2421, 2425, 2463, 2498 or 2507, subject to Item 170 and having a density in pounds per cubic foot of:</p> <p>Sub 1 Less than 1 400</p> <p>Sub 2 1 but less than 2 300</p> <p>Sub 3 2 but less than 4 250</p> <p>Sub 4 4 but less than 6 175</p> <p>Sub 5 6 but less than 8 125</p> <p>Sub 6 8 but less than 10 100</p> <p>Sub 7 10 but less than 12 92.5</p> <p>Sub 8 12 but less than 15 85</p> <p>Sub 9 15 but less than 22.5 70</p> <p>Sub 10 22.5 but less than 30 65</p> <p>Sub 11 30 or greater 60</p> | |
| 73261 | <p>NOTE—Also applies on: instant, soluble, freeze-dehydrated or freeze-dried coffee, tea or herbal tea; coffee, tea or herbal tea in premeasured servings, with or without integral filter; or Coffee Service Kits or Sets, consisting of coffee in premeasured servings, with or without integral filter, and with or without non-dairy creamer, sugar or artificial sweetener, stirrers, tea, herbal tea or hot chocolate in same box.</p> | |
| 73262 | <p>NOTE—Provisions for desserts, dessert toppings or related foods include, but are not limited to:</p> <p>Crusts, pie or tart;</p> <p>Dessert Mixes or Preparations, NOI;</p> <p>Dishes, Bowls, Ice Cream Cones or Shells, edible, NOI;</p> <p>Dough, prepared;</p> <p>Gelatine Dessert;</p> <p>Sauces or Toppings, ice cream or dessert, NOI, including Marshmallow Creme, Nuts (Nutmeats) in Syrup, or Sprinkles.</p> | |
| 73263 | <p>NOTE—Also applies on: freeze-dehydrated or freeze-dried beverage or drink preparations or juice powders or crystals.</p> | |
| 73264 | <p>NOTE—Does not apply on materials regulated by the U.S. Department of Transportation as hazardous and required to bear a Hazard Class or Hazard Division label or placard. For classes applicable to such hazardous materials, see provisions elsewhere in this Classification.</p> | |
| 73365 | <p>Fruits or Vegetables, canned or preserved, NOI, other than dehydrated, dried or evaporated, see Note, item 73366, in boxes, drums or Packages 1000, 1264, 2288, 2303, 2438, 2463, 2467, 2498 or 2507</p> | 60 |
| 73366 | <p>NOTE—Also applies on:</p> <p>Beans, edible, with or without other ingredients, NOI;</p> <p>Fruit Butter or Pulp;</p> <p>Jams, Jellies, Marmalades or Preserves, NOI;</p> <p>Mushrooms, other than truffles;</p> <p>Olives;</p> <p>Pickles, NOI;</p> <p>Pimientos;</p> <p>Tomatoes, including Tomato Paste, Tomato Pulp or Tomato Puree.</p> | |
| 73770 | <p>Malt and Milk Compound, not malted milk, in bags, boxes or drums</p> | 65 |

FREIGHT CLASSIFICATION DOCKET 2024-1

| ITEM | ARTICLE | CLASS |
|-------|--|-------|
| | FOODSTUFFS GROUP: subject to item 72000 | |
| 73840 | Meat, Fruit or Vegetable Substitutes , processed from vegetable or soya bean products, peanuts, grain products or seasoning: | |
| Sub 1 | In inner containers, other than glass or metal inner containers, in boxes..... | 77.5 |
| Sub 2 | In bulk in bags, in glass or metal inner containers in boxes, or in Packages 510, 1000 or 2231..... | 60 |
| 73860 | Milk , malted, in boxes or drums..... | 65 |
| 73990 | Milk , condensed or evaporated, liquid, with or without vegetable fats, in boxes, drums or Packages 1000, 2463 or 2498..... | 55 |
| 74020 | Milk Food , including Infant Formula , liquid, in boxes, drums or Packages 1000, 1428 or 2506, see Note, item 74032: | |
| Sub 1 | Containing less than 25 percent by weight of ingredients other than milk..... | 60 |
| Sub 2 | Containing 25 percent or more by weight of ingredients other than milk..... | 65 |
| 74030 | Milk Food , including Infant Formula , other than malted milk, other than liquid, in boxes, drums or Package 1428, see Note, item 74032..... | 85 |
| 74032 | NOTE—Each inner package may contain not to exceed one 1-ounce package of vitamins, one feeding nipple, one tube of ointment not exceeding one-half ounce, one plastic cup, or packets of artificial flavoring not to exceed a combined weight of one-half ounce. | |
| 74035 | Milk or Cream Products , shelf-stable, viz.: | |
| | Milk or Cream , liquid, including Milk Beverages or Milk Drinks; | |
| | Milk or Cream Substitutes , including Nondairy Creamers or Plant-Based Milk or Cream Products , NOI; | |
| | In boxes, drums or Packages 2463 or 2498..... | 65 |
| 74043 | Milk Sugar (Lactose) , crude, in bags, boxes, drums or Package 71..... | 65 |
| 74045 | Milk Sugar (Lactose) , refined, in bags, boxes, drums or Package 71..... | 70 |
| 74095 | Molasses or Syrups , not medicated, see Note, item 74096, viz.: | |
| | Agave Syrup (Agave Nectar); | |
| | Beverage or Fountain Syrup; | |
| | Flavoring Syrup; | |
| | Maple Syrup; | |
| | Molasses , NOI; | |
| | Syrup , corn, rye, sorghum or wheat, NOI; | |
| | Syrup , malt or malted; | |
| | Syrup , NOI; | |
| | In boxes, drums or Packages 1000, 2035, 2288, 2402, 2463, 2467 or 2498..... | 65 |
| 74096 | NOTE—Also applies on dehydrated syrups. | |
| 74580 | Rice , rough, in bags..... | 50 |
| 74620 | Salad Dressing Preparations , dry, in boxes, drums or Package 2283..... | 70 |
| 74700 | Sauces, Condiments, Dips or Spreads , other than dry, viz.: | |
| | Barbecue Sauce; | |
| | Condiments , NOI; | |
| | Dips , NOI; | |
| | Gravy; | |
| | Horseradish , prepared; | |
| | Hot Sauce or Pepper Sauce; | |
| | Ketchup (Catsup); | |
| | Marinades; | |
| | Mayonnaise; | |
| | Mustard , prepared; | |
| | Salad Dressing , including Vinaigrette; | |
| | Salsa; | |
| | Sandwich Spreads , NOI, including Cheese Spreads; | |
| | Sauces , basic food, NOI, including Marinara, Pizza or Spaghetti Sauce; | |
| | Sauces , cooking or dipping, NOI; | |
| | Soy Sauce; | |
| | In boxes, drums or Packages 1204, 1400, 1429, 2093, 2288, 2303, 2438, 2463, 2467 or 2498. | 65 |
| 74840 | Soybean Milk Compound , including Infant Formula , in bags, boxes, drums or Package 1000..... | 60 |
| 75100 | Sweeteners , NOI, including Sugar Alcohols , see Note, item 75101, in bags, boxes, drums or Package 2407, subject to Item 170 and having a density in pounds per cubic foot of: | |
| Sub 1 | Less than 8..... | 150 |
| Sub 2 | 8 but less than 12..... | 100 |
| Sub 3 | 12 or greater..... | 70 |
| 75101 | NOTE—Does not apply on syrups. | |
| 89230 | Grain or Grain Products , see Note, item 89231, viz.: | |
| | Barley; | |
| | Corn; | |
| | Feed , NOI, other than prepared animal, fish or poultry feed; | |
| | Grain or Grain Products , NOI; | |
| | Grits , NOI; | |
| | Malt; | |
| | Oats; | |
| | Rye; | |
| | Wheat; | |
| | In bags, boxes or drums..... | 65 |
| 89231 | NOTE—Does not apply on grain represented as 'seed.' For applicable provisions, see item 173720. | |

FREIGHT CLASSIFICATION DOCKET 2024-1

| ITEM | ARTICLE | CLASS |
|---|--|-------|
| 72180-A 72285-A 72310-A 72311-A 72747-A 72748-A 72749-A 72935-A 72960-A 72961-A 72970-A ►73150-A | <p>FOODSTUFFS GROUP: subject to item 72000</p> <p>Beverages or Foods, canned, jacketed by cans containing chemical heating element, with or without water, etc...☒Cancel; obsolete.</p> <p>Butters or Spreads, nut or seed, including Peanut Butter, etc...☒Cancel; see item 74700.</p> <p>Cereals, viz., etc...☒Cancel; see item 73260.</p> <p>NOTE—☒Cancel; no further application.</p> <p>Cultures, bacteria, including Starter Cultures, etc...☒Cancel; see item 73260.</p> <p>NOTE—☒Cancel; see item B-NEW.</p> <p>NOTE—☒Cancel; no further application.</p> <p>Fish, dried or dry salted, flaked or shaved, including Katsuobushi or Bonito Flakes, etc...☒Cancel; see item 73260.</p> <p>Fish or Shellfish, cooked, pickled, preserved or smoked, NOI, etc...☒Cancel; see item 73260.</p> <p>NOTE—☒Cancel; no further application.</p> <p>Fish or Shellfish, dried or dry salted, NOI, etc...☒Cancel; see item 73260.</p> <p>Flour, Meal, Sugar or Related Articles, viz.:</p> <p>Baking Powder;</p> <p>Flour, NOI;</p> <p>Meal, NOI, including Corn Meal;</p> <p>Mixes, baking, NOI, including Bread, Brownie, Cake, Cookie, Muffin, Pancake or Waffle Mixes, see Note, item 73151;</p> <p>Mixes, batter, breading or coating, NOI;</p> <p>Sugar, NOI;</p> <p>Sweeteners, NOI, including Sugar Alcohols, see Note, item A-NEW;</p> <p>In bags, boxes, drums or Packages 128 or 2456, subject to Item 170 and having a density in pounds per cubic foot of:</p> | |
| Sub 1 | Less than 10..... | 125 |
| Sub 2 | 10 but less than 15 | 85 |
| Sub 3 | 15 but less than 30 | 70 |
| Sub 4 | 30 or greater..... | 55 |
| ▲73151 | NOTE—Also applies on other ingredients or complement of accessories necessary for completion of the finished product when packaged in same box. | |
| ★A-NEW | NOTE—Does not apply on syrups. For applicable provisions, see item 74095. | |
| 73250-A | <p>Foodstuffs, other than frozen, Group III, viz., etc...☒Cancel; see item 73260.</p> | |
| ★B-NEW | NOTE—Applies on cultures, whether freeze-dehydrated or freeze-dried, used in the production of food or beverages. | |

| ITEM | ARTICLE | CLASS |
|--|---|-------|
| <p>▶73260-A</p> <p>Sub 1</p> <p>Sub 2</p> <p>Sub 3</p> <p>Sub 4</p> <p>Sub 5</p> <p>Sub 6</p> <p>Sub 7</p> <p>Sub 8</p> <p>Sub 9</p> <p>Sub 10</p> <p>Sub 11</p> | <p>FOODSTUFFS GROUP: subject to item 72000</p> <p>Foodstuffs, other than frozen, Group IV, viz.:</p> <p>Baby Food or Infant Formula, NOI;</p> <p>Bakery Goods, NOI, also in Package 2428;</p> <p>Beverages or Drinks, NOI, or Beverage or Drink Preparations, NOI, see Note, item 73263, also in Packages 2330 or 2438;</p> <p>Cereals, NOI, including Baby Cereals, Granola, Oatmeal or Porridge;</p> <p>Coffee, Tea or Herbal Tea, NOI, see Note, item 73261, also in Packages 2330 or 2380;</p> <p>Cookies or Crackers, NOI, also in Package 2428;</p> <p>Cooking Spray, not required by the U.S. Department of Transportation to bear a Hazard Class or Hazard Division label or placard, see Note, item 73264;</p> <p>Cultures, including Starter Cultures, see Note, item B-NEW;</p> <p>Desserts, Dessert Toppings or Related Foods, NOI, not required by the U.S. Department of Transportation to bear a Hazard Class or Hazard Division label or placard, see Note, items 73262 and 73264;</p> <p>Extracts, Flavoring Compounds, Imitation Flavors or Bottlers' Flavoring Compounds, NOI, not required by the U.S. Department of Transportation to bear a Hazard Class or Hazard Division label or placard, see Note, item 73264;</p> <p>Fish or Shellfish, cooked, dried or preserved, NOI;</p> <p>Food Curing, Preserving or Seasoning Compounds, NOI;</p> <p>Foodstuffs, NOI, not required by the U.S. Department of Transportation to bear a Hazard Class or Hazard Division label or placard, see Note, item 73264;</p> <p>Gelatine or Pectin, NOI;</p> <p>Honey or Honeycomb, NOI;</p> <p>Hot Chocolate or Hot Cocoa Mixes;</p> <p>Juice, fruit or vegetable, including Juice Concentrates, Juice Beverages, Juice Drinks or Juice Powders or Crystals, see Note, item 73263, also in Packages 2438 or 2467;</p> <p>Milk or Cream Products, or Milk or Cream Substitutes, shelf-stable, NOI;</p> <p>Oils, cooking or salad, NOI, or Vegetable Oil Shortening;</p> <p>Purees, fruit or vegetable, including Applesauce;</p> <p>Pasta or Noodles, with or without other ingredients;</p> <p>Rice, cleaned or prepared, NOI, with or without other ingredients;</p> <p>Shells, taco, or Tortillas;</p> <p>Snack Foods, NOI;</p> <p>Soups or Soup Mixes;</p> <p>Yeast, dry or liquid;</p> <p>In bags, boxes, drums or Packages 128, 223, 510, 1000, 1400, 1500, 2093, 2231, 2404, 2414, 2416, 2421, 2425, 2463, 2498 or 2507, subject to Item 170 and having a density in pounds per cubic foot of:</p> <p>Less than 1 400</p> <p>1 but less than 2 300</p> <p>2 but less than 4 250</p> <p>4 but less than 6 175</p> <p>6 but less than 8 125</p> <p>8 but less than 10 100</p> <p>10 but less than 12 92.5</p> <p>12 but less than 15 85</p> <p>15 but less than 22.5 70</p> <p>22.5 but less than 30 65</p> <p>30 or greater 60</p> | |
| <p>△73261</p> | <p>NOTE—Also applies on: instant, soluble, freeze-dehydrated or freeze-dried coffee, tea or herbal tea; coffee, tea or herbal tea in premeasured servings, with or without integral filter; or Coffee Service Kits or Sets, consisting of coffee in premeasured servings, with or without integral filter, and with or without non-dairy creamer, sugar or artificial sweetener, stirrers, tea, herbal tea or hot chocolate in same box.</p> | |
| <p>△73262</p> | <p>NOTE—Provisions for desserts, dessert toppings or related foods include, but are not limited to:</p> <p>Crusts, pie or tart;</p> <p>Dessert Mixes or Preparations, NOI;</p> <p>Dishes, Bowls, Ice Cream Cones or Shells, edible, NOI;</p> <p>Dough, prepared;</p> <p>Gelatine Dessert;</p> <p>Sauces or Toppings, ice cream or dessert, NOI, including Marshmallow Creme, Nuts (Nutmeats) in Syrup, or Sprinkles.</p> | |
| <p>△73263</p> | <p>NOTE—Also applies on freeze-dehydrated or freeze-dried beverage or drink preparations or juice powders or crystals.</p> | |
| <p>△73264</p> | <p>NOTE—Does not apply on materials regulated by the U.S. Department of Transportation as hazardous and required to bear a Hazard Class or Hazard Division label or placard. For classes applicable to such hazardous materials, see provisions elsewhere in this Classification.</p> | |
| <p>▶73365-A</p> <p>Sub 1</p> <p>Sub 2</p> <p>Sub 3</p> | <p>Fruits or Vegetables, canned or preserved, NOI, other than dehydrated, dried or evaporated, see Note, item 73366, in boxes, drums or Packages 1000, 1264, 2288, 2303, 2438, 2463, 2467, 2498 or 2507, subject to Item 170 and having a density in pounds per cubic foot of:</p> <p>Less than 22.5 70</p> <p>22.5 but less than 30 65</p> <p>30 or greater 55</p> | |

| ITEM | ARTICLE | CLASS |
|----------|--|-------|
| | <p>FOODSTUFFS GROUP: subject to item 72000</p> <p>NOTE—Also applies on:</p> <p>Beans, edible, with or without other ingredients, NOI;</p> <p>Mushrooms, other than truffles;</p> <p>Olives;</p> <p>Pickles, NOI;</p> <p>Pimientos;</p> <p>Tomatoes, including Tomato Paste, Tomato Pulp or Tomato Puree.</p> | |
| ▶73366-A | NOTE—Also applies on: | |
| | Beans , edible, with or without other ingredients, NOI; | |
| | Mushrooms , other than truffles; | |
| | Olives ; | |
| | Pickles , NOI; | |
| | Pimientos ; | |
| | Tomatoes , including Tomato Paste , Tomato Pulp or Tomato Puree . | |
| 73770-A | Malt and Milk Compound , not malted milk, etc...☒Cancel; see item 73260. | |
| 73840-A | Meat, Fruit or Vegetable Substitutes , processed from vegetable or soya bean products, peanuts, grain products or seasoning, etc...☒Cancel; see item 73260. | |
| 73860-A | Milk , malted, etc...☒Cancel; see item 73260. | |
| 73990-A | Milk , condensed or evaporated, liquid, with or without vegetable fats, etc...☒Cancel; see item 73260. | |
| 74020-A | Milk Food , including Infant Formula , liquid, etc...☒Cancel; see item 73260. | |
| 74030-A | Milk Food , including Infant Formula , other than malted milk, other than liquid, etc...☒Cancel; see item 73260. | |
| 74032-A | NOTE—☒Cancel; no further application. | |
| 74035-A | Milk or Cream Products , shelf-stable, viz., etc...☒Cancel; see item 73260. | |
| 74043-A | Milk Sugar (Lactose) , crude, etc...☒Cancel; see item 73150. | |
| 74045-A | Milk Sugar (Lactose) , refined, etc...☒Cancel; see item 73150. | |
| ▶74095-A | Molasses or Syrups , not medicated, see Note, item 74096, viz.: | |
| | Agave Syrup (Agave Nectar) ; | |
| | Beverage or Fountain Syrup ; | |
| | Flavoring Syrup ; | |
| | Maple Syrup ; | |
| | Molasses , NOI; | |
| | Syrup , corn, rye, sorghum or wheat, NOI; | |
| | Syrup , malt or malted; | |
| | Syrup , NOI; | |
| | In boxes, drums or Packages 1000, 2035, 2288, 2402, 2463, 2467 or 2498, subject to Item 170 and having a density in pounds per cubic foot of: | |
| Sub 1 | Less than 22.5..... | 70 |
| Sub 2 | 22.5 but less than 30..... | 65 |
| Sub 3 | 30 or greater..... | 55 |
| △74096 | NOTE—Also applies on dehydrated syrups. | |
| 74580-A | Rice , rough, etc...☒Cancel; see item 89230. | |
| 74620-A | Salad Dressing Preparations , dry, etc...☒Cancel; see item 74700. | |
| ▶74700-A | Sauces, Condiments, Dips, Spreads or Butters, viz.: | |
| | Barbecue Sauce ; | |
| | Butters , fruit, vegetable, nut or seed, NOI, including Peanut Butter ; | |
| | Condiments , NOI; | |
| | Dips , NOI; | |
| | Gravy ; | |
| | Horseradish , prepared; | |
| | Hot Sauce or Pepper Sauce ; | |
| | Ketchup (Catsup) ; | |
| | Marinades ; | |
| | Mayonnaise ; | |
| | Mustard , prepared; | |
| | Salad Dressing , including Vinaigrette ; | |
| | Salsa ; | |
| | Sandwich Spreads , NOI, including Cheese Spreads ; | |
| | Sauces , basic food, NOI, including Marinara , Pizza or Spaghetti Sauce ; | |
| | Sauces , cooking or dipping, NOI; | |
| | Soy Sauce ; | |
| | Spreads , fruit, vegetable, nut or seed, NOI; | |
| | In boxes, drums or Packages 1204, 1400, 1429, 2093, 2288, 2303, 2438, 2463, 2467 or 2498, subject to Item 170 and having a density in pounds per cubic foot of: | |
| Sub 1 | Less than 22.5..... | 70 |
| Sub 2 | 22.5 but less than 35..... | 65 |
| Sub 3 | 35 or greater..... | 55 |
| 74840-A | Soybean Milk Compound , including Infant Formula , etc...☒Cancel; see item 73260. | |
| 75100-A | Sweeteners , NOI, including Sugar Alcohols , etc...☒Cancel; see item 73150. | |
| 75101-A | NOTE—☒Cancel; see item A-NEW. | |

FREIGHT CLASSIFICATION DOCKET 2024-1

| ITEM | ARTICLE | CLASS |
|------------------------------|---|-----------|
| <p>89230-A</p> <p>△89231</p> | <p>Grain or Grain Products, see Note, item 89231, viz.:</p> <p>Barley;</p> <p>Corn;</p> <p>Feed, NOI, other than prepared animal, fish or poultry feed;</p> <p>Grain or Grain Products, NOI;</p> <p>Grits, NOI;</p> <p>Malt;</p> <p>Oats;</p> <p>▶Rice, including Rough Rice;</p> <p>Rye;</p> <p>Wheat;</p> <p>In bags, boxes or drums</p> <p>NOTE—Does not apply on grain represented as 'seed.' For applicable provisions, see item 173720.</p> | <p>65</p> |