



DOCKET 2024-1

MARCH 2024

A public meeting to discuss provisions of the National Motor Freight Classification® and ClassIT® will be held on **March 11, 2024**, at:

Cheyenne Mountain Resort
3225 Broadmoor Valley Road
Colorado Springs, CO 80906
719.538.4000

ISSUED: February 8, 2024

On Monday, March 11, 2024, the Freight Classification Development Council (FCDC) will conduct a public meeting to discuss proposals for amending the National Motor Freight Classification® (NMFC®) and ClassIT®. **The meeting will be held at the Cheyenne Mountain Resort, 3225 Broadmoor Valley Road, Colorado Springs, CO 80906** commencing at **11:00 am Mountain Time**.

Section I of this docket provides the FCDC analyses for proposed amendments that will be discussed at the meeting. Each analysis includes the full text of the proposal, the contact person(s) for the proposal and the identity of the proponent.

Section II of this docket provides the FCDC analyses for proposals from Docket 2023-3 on which action was deferred pending further review. The analysis includes the full text of the proposals, the contact person(s) for the proposals and the identity of the proponent.

Section III of this docket provides notice of classification changes made necessary by law, by order of a regulatory body, or for clarification, simplification, or uniformity.

The symbol ⇨ indicates a proposed classification change. The symbol ☠ indicates that the commodities may be subject to federal regulations concerning the shipping of hazardous materials. The symbol ® indicates a registered trade name or registered trademark. The symbol ™ indicates a trademark.

Public Docket Files

Supporting data and other relevant information pertaining to each proposal in Sections I, II and III herein are contained in a **Public Docket File**. The public files are available online without charge at www.nmfta.org. They are organized by docket and subject numbers.

Freight Classification Development Council

fcdc@nmfta.org • 703.838.1810

The Freight Classification Development Council invites all interested persons to participate in the classification process.

Anyone having an interest in a proposal listed in this docket may attend the meeting on March 11, 2024, and/or submit a written statement. Written statements may be submitted by mail or email, **and they must be received by the FCDC no later than 5:00 pm Eastern Time, Tuesday, March 5, 2024.**

Written submissions received by 5:00 pm Eastern Time, March 5, 2024, will be included in the respective public docket file and posted on our website. The statements will be reviewed by the FCDC, and they will be discussed by the FCDC at the public meeting on March 11, 2024.

Our mailing address is:

**Freight Classification Development Council
1001 North Fairfax Street, Suite 600
Alexandria, Virginia 22314**

Our email address is:

fcdc@nmfta.org

Written statements may also be emailed to the contact person(s) involved.

To schedule an appearance at the meeting, or if you require further information, please contact Nicole Jones, Classification Support Specialist, at nicole.jones@nmfta.org or 571.527.2681. Anyone requesting assistance in accordance with the Americans with Disabilities Act will be accommodated.

The FCDC's procedures as well as other information on the FCDC and the National Motor Freight Traffic Association are available online at www.nmfta.org.

Amendments resulting from the proposals in this docket will be published in a supplement to the National Motor Freight Classification that is scheduled to be issued on **April 11, 2024**, with an effective date of **May 11, 2024**. ClassIT will be automatically updated on **May 11, 2024**.

A

Agricultural Implements, other than hand 2
 Asphalt7 of Docket 2023-3 (See Section II, Part B herein)

B

Beverage Dispensers..... 9
 Boat Construction Kits 14

C

Caps and Covers 17
 Cellular Telephones..... 10
 Coolers, water 9
 Conveyors, or Parts thereof..... 3

D

Dispensers, beverage or water..... 9

E

Elevators, or Parts thereof..... 3

F

File Folders, stationary or office..... 19
 Foodstuffs 1

H

Household Utensils and Kitchen Hand Tools, other than power 5
 Husks 11

I

Implements, agricultural, other than hand 2
 Industrial Spill Containment Kits..... 13

J

Jackets, stationary or office 19

K

Kitchen Hand Tools, other than power.....5
 Kits, boat construction.....14
 Kits, industrial spill containment13
 Kits, pool.....8

L

Lifts, or Parts thereof3
 Liners, swimming pool or pond, plastic16

P

Parts, agricultural implement2
 Parts, conveyors, elevators, or lifts.....3
 Parts, pool8
 Parts, safe or vault.....18
 Parts, torches or welders7
 Parts, vehicle6
 Pitch..... 7 of Docket 2023-3 (See Section II, Part B herein)
 Pockets, stationary or office19
 Pond Liners, plastic.....16
 Pools, or Parts thereof, or Pool Kits.....8
 Power Supplies, uninterruptible12
 Presses4

R

Radio, Radio Impulse or Radiotelephone Transmitting or Transmitting and Receiving Sets ...10
 Rope, synthetic fiber.....15

S

Safes, or Parts thereof.....18
 Shucks11
 Swimming Pool Liners, plastic.....16
 Synthetic Fiber Rope.....15

T

Tar7 of
Docket 2023-3 (*See Section II, Part B
herein*)

Television Transmitting or
Transmitting and Receiving Sets... 10

Tools, hand, kitchen, other than
power..... 5

Torches, or Parts thereof 7

U

Uninterruptible Power Supplies (UPSs) 12

Utensils, household, other than
power..... 5

V

Vehicle Parts 6

Vaults, or Parts thereof 18

W

Water Coolers or Dispensers..... 9

Windows, drive-up or walk-up..... 14 of
Docket 2023-3 (*See Section II
Part A herein*)

Windows, (Sash or Sash and Frames
Combined), NOI, glazed..... 14 of
Docket 2023-3 (*See Section II,
Part A herein*)

Wireless (Audio) Sound Impulse
Transmitting and Receiving Sets... 10

Welders, or Parts thereof..... 7

THIS PAGE INTENTIONALLY LEFT BLANK

SUBJECT 1

Re: Foodstuffs Group

Contact: Larissa A. Franklin

Telephone — (703) 838-1824

franklin@nmfta.org

Proponent: Freight Classification Development Council

Present Classification Provisions

See Appendix A herein.

Proposed Classification Provisions

See Appendix B herein.

Analysis

Introduction

As a result of action taken on Docket 2023-3, Subject 1, 74 items subject to the Foodstuffs Group were canceled with reference to the full-scale, density-based provisions of item 73260, and to other applicable NMFC items, to simplify and clarify provisions applying on various types of foodstuffs. This proposal is a continuation of that simplification of the Foodstuffs Group and seeks to consolidate and streamline most remaining items in this generic heading. While many of the involved commodities exhibit a wide range of densities, other commodities such as canned or preserved fruits or vegetables, as named in item 73365, molasses or syrups, as named in items 74095, and sauces condiments, dips, spreads or butters, as named in items 72285, 74620 and 74700, exhibit narrower density distributions at the higher end of the Classification density scale. The transportation characteristics below relate to the items shown in the Present Classification Provisions herein.

Transportation Characteristics

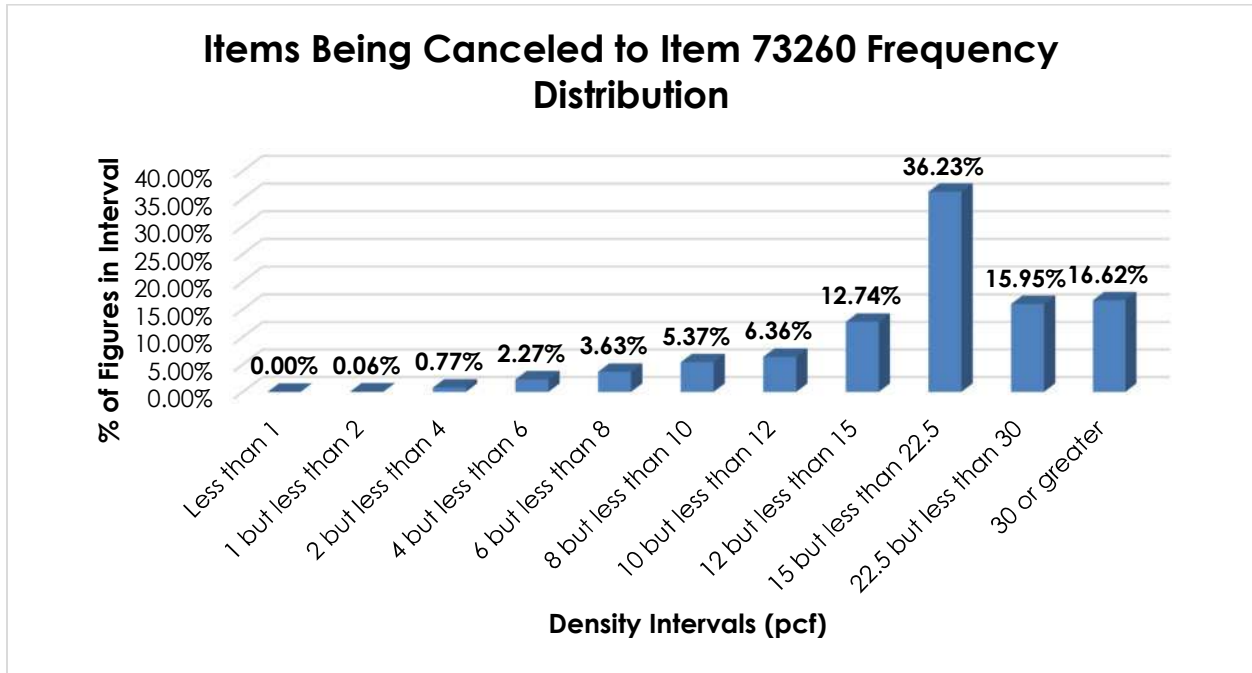
Density—The information of record includes 165,549 density observations obtained from the FCDC's Density Study¹. The densities range from 0.96 to 82.82 pcf, with an overall average density of 23.51 pcf.

The graphs and the tables on the following pages show the frequency distributions, density ranges, averages and concentrations of density observations for the proposed provisions.

¹ The Density Study is part of an ongoing effort by the FCDC to collect information on actual shipments across all product categories handled by the LTL industry. Carriers that choose to participate in the Study periodically submit shipment data captured through their respective freight auditing programs. The FCDC uses verifiable data points, identified by NMFC item, that include the weight and the dimensions and/or cube of the shipping unit.

SUBJECT 1

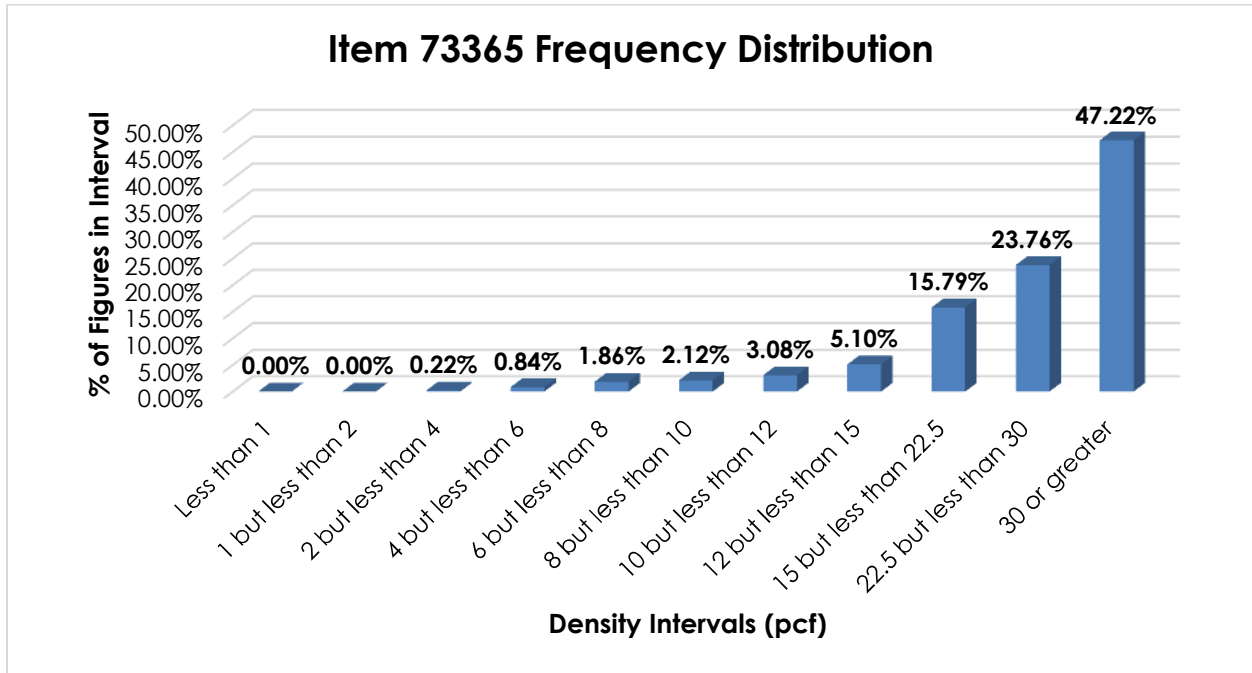
The information of record on commodities moving under items 72310, 72747, 72935, 72960, 72970, 73250, 73770, 73840, 73860, 73990, 74020, 74030, 74035 and 74840 includes 82,077 density observations. The densities range from 1.12 to 61.48 pcf, with an overall average density of 20.19 pcf. As shown in the graph below, there is a distinct peak in the 15 but less than 22.5 pcf interval with relatively uniform clustering in the surrounding intervals.



THIS SPACE INTENTIONALLY LEFT BLANK

SUBJECT 1

The information of record on commodities moving under item 73365 includes 15,014 density observations. The densities range from 2.19 to 82.82 pcf, with an overall average density of 28.47 pcf. As shown in the graph below, the density distribution is left-skewed, with over 86% of the figures being 15 pcf or greater. Density breaks at 22.5 and 30 pcf reflect the modality and spread of the distribution.



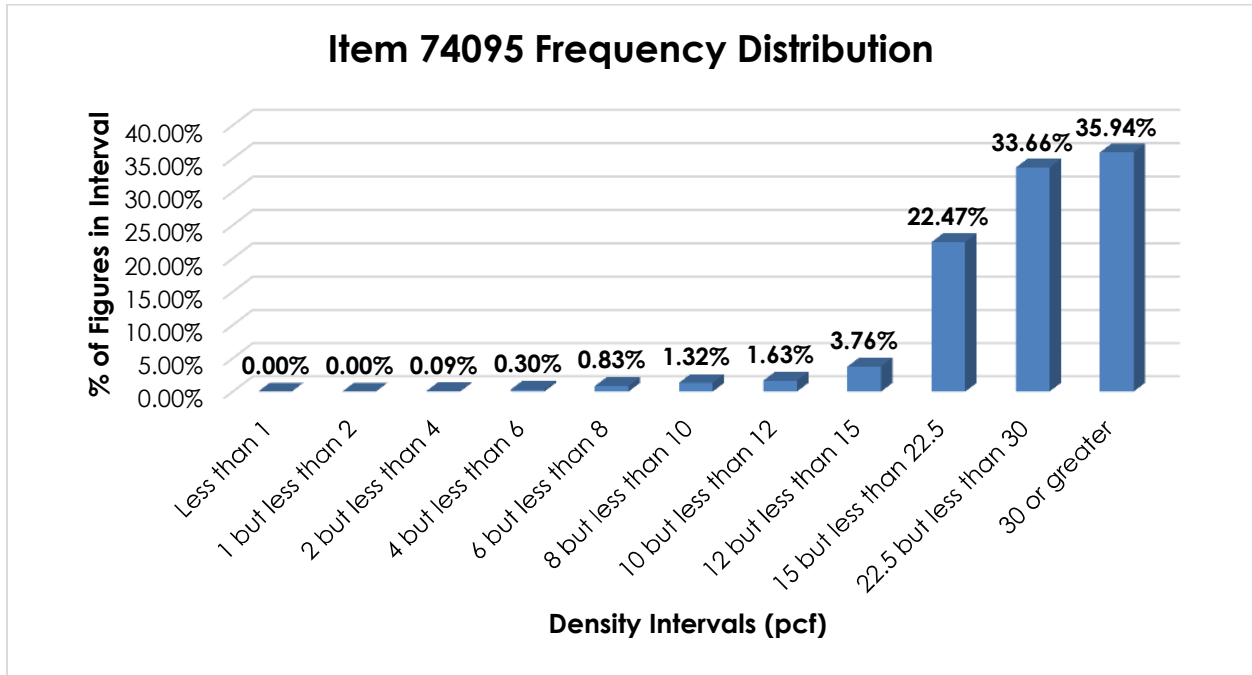
When the data is evaluated based on the proposed density breaks at 22.5 and 30 pcf, the density ranges and averages shown in the table below emerge.

Density Groups (pcf)	Density Range (pcf)	Average Density (pcf)
Less than 22.5	2.19 – 22.49	15.32
22.5 but less than 30	22.50 – 29.99	26.25
30 or greater	30.00 – 82.82	37.67

THIS SPACE INTENTIONALLY LEFT BLANK

SUBJECT 1

The information of record on commodities moving under item 74095 includes 13,225 density observations. The densities range from 2.10 to 68.32 pcf, with an overall average density of 27.94 pcf. While the distribution shown in the graph below is clustered, the average density is not reflected in the predominant peak. Density breaks at 22.5 and 30 pcf reflect the modality and spread of the distribution.



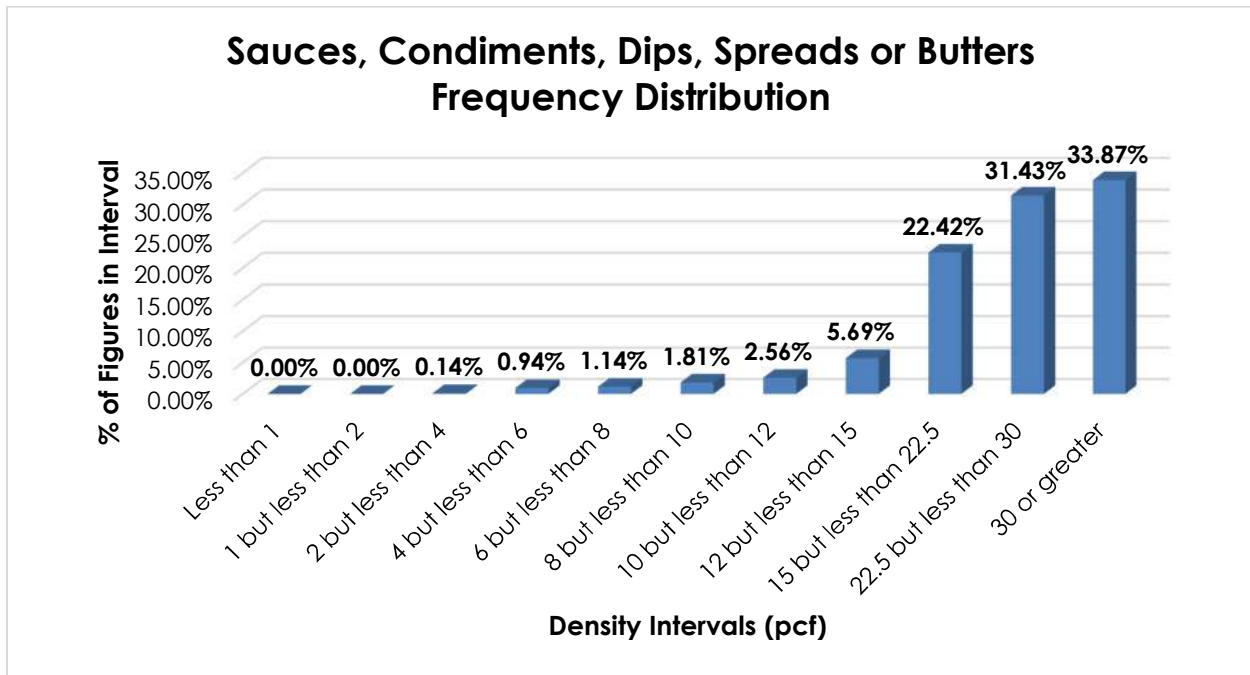
When the data is evaluated based on the proposed density breaks at 22.5 and 30 pcf, the density ranges and averages shown in the table below emerge.

Density Groups (pcf)	Density Range (pcf)	Average Density (pcf)
Less than 22.5	2.10 – 22.49	17.35
22.5 but less than 30	22.50 – 29.99	25.88
30 or greater	30.00 – 68.32	38.81

THIS SPACE INTENTIONALLY LEFT BLANK

SUBJECT 1

The information of record on commodities moving under item 72285, 74620 and 74700 includes 55,228 density observations². The densities range from 2.33 to 70.68 pcf, with an overall average density of 26.05 pcf. While the distribution shown in the graph below is clustered, the average density is not reflected in the predominant peak. Density breaks at 22.5 and 35 pcf reflect the modality and spread of the distribution.



When the data is evaluated based on the proposed density breaks at 22.5 and 35 pcf, the density ranges and averages shown in the table below emerge.

Density Groups (pcf)	Density Range (pcf)	Average Density (pcf)
Less than 22.5	2.33 – 22.49	16.12
22.5 but less than 35	22.50 – 34.99	28.50
35 or greater	35.00 – 70.68	39.69

Handling, Stowability and Liability—Care must be taken to avoid stowing the involved commodities with hazardous materials or other freight that may pose a contamination risk. They may also be damaged by freight with which stowed or by the elements. However, there have been no reports of unusual or significant handling, stowability or liability issues.

² The data also includes observations represented as “Fruit Butter or Pulp” and “Jams, Jellies, Marmalades or Preserves” currently moving under item 73365.

SUBJECT 1

Conclusion

Based on the foregoing analysis, this proposal would cancel items 72310, 72747, 72935, 72960, 72970, 73250, 73770, 73840, 73860, 73990, 74020, 74030, 74035 and 74840 with reference to full-scale, density-based provisions of item 73260³. Concurrently, the “viz.” listing in item 73260 would be amended for clarification and simplification.

Item 73365 would be amended to provide classes predicated on density, with breaks at 22.5 and 30 pcf⁴, as shown in the table below.

Density Groups (pcf)	Average Density (pcf)	FCDC Minimum Average Density Guideline (pcf)	Class based on FCDC Density Guidelines
Less than 22.5	15.32	15	70
22.5 but less than 30	26.25	22.5	65
30 or greater	37.67	35	55

Item 74095 would be amended to provide classes predicated on density, with breaks at 22.5 and 30 pcf⁴, as shown in the table below.

Density Groups (pcf)	Average Density (pcf)	FCDC Minimum Average Density Guideline (pcf)	Class based on FCDC Density Guidelines
Less than 22.5	17.35	15	70
22.5 but less than 30	25.88	22.5	65
30 or greater	38.81	35	55

Items 72285 and 74620 would be canceled with reference to item 74700⁵, which would be amended to read, “Sauces, Condiments, Dips, Spreads or Butters.” The “viz.” listing in item 74700 would be amended for clarification and simplification, and item 74700 would provide classes predicated on density, with breaks at 22.5 and 35 pcf⁴, as shown in the table below.

Density Groups (pcf)	Average Density (pcf)	FCDC Minimum Average Density Guideline (pcf)	Class based on FCDC Density Guidelines
Less than 22.5	16.12	15	70
22.5 but less than 35	28.50	22.5	65
35 or greater	39.69	35	55

³ Item 73260 provides the FCDC’s standard 11-subprovision density scale, which includes reference to Item (Rule) 170, the inadvertence clause.

⁴ The density provisions would include reference to Item (Rule) 170, the inadvertence clause.

⁵ It is proposed to classify “Fruit Butter or Pulp” and “Jams, Jellies, Marmalades or Preserves,” as currently embraced by item 73365, under item 74700. Note, item 73366 would be amended accordingly.

SUBJECT 1

Items 74043, 74045 and 75100 would be canceled with reference to item 73150⁶. The "viz." listing in item 73150 would also be amended for clarification and simplification. Additionally, item 74580 would be canceled with reference to item 89230, and the "viz." listing in item 89230 would be amended accordingly.

Item 72180 would be canceled as obsolete.

Notes, items 72311, 72749, 72961 and 74032 would be canceled with no further application. Note, item 72748 would be canceled with reference to a new Note attendant to item 73260, and Note, item 75101 would be canceled with reference to a new Note attendant to item 73150.

⁶ The density provisions include reference to Item (Rule) 170, the inadvertence clause.

THIS PAGE INTENTIONALLY LEFT BLANK

FREIGHT CLASSIFICATION DOCKET 2024-1

ITEM	ARTICLE	CLASS
	FOODSTUFFS GROUP: subject to item 72000	
72180	Beverages or Foods , canned, jacketed by cans containing chemical heating element, with or without water, in boxes	70
72285	Butters or Spreads , nut or seed, including Peanut Butter , in boxes:	
Sub 1	Powdered.....	77.5
Sub 2	NOI	65
72310	Cereals, viz.:	
	Baby Cereals;	
	Cereals , NOI, ready-to-eat, including Granola , see Note, item 72311;	
	Cereals , NOI, requiring further cooking or heating (Hot Cereals);	
	Oatmeal or Porridge , including Mush ;	
	In bags, boxes, drums or Packages 128, 2231, 2465, 2470 or 2493, subject to Item 170 and having a density in pounds per cubic foot of:	
Sub 1	Less than 8.....	150
Sub 2	8 but less than 12	100
Sub 3	12 or greater.....	70
72311	NOTE—The term 'ready-to-eat cereals' refers to prepared cereals ready for human consumption without further cooking or heating.	
72747	Cultures , bacteria, including Starter Cultures , see Note, item 72748, in boxes, see Note, item 72749	85
72748	NOTE—Applies on bacteria cultures, whether or not freeze-dehydrated or freeze-dried, used in the production of food or beverages.	
72749	NOTE—Bacteria cultures that require temperature control must be shipped in insulated packages containing sufficient refrigerant to maintain those temperatures during transport.	
72935	Fish , dried or dry salted, flaked or shaved, including Katsuobushi or Bonito Flakes , in boxes.....	250
72960	Fish or Shellfish , cooked, pickled, preserved or smoked, NOI, see Note, item 72961, in boxes, drums or Packages 2463 or 2498.....	65
72961	NOTE—Does not apply on fresh fish smoked for flavoring only.	
72970	Fish or Shellfish , dried or dry salted, NOI, in boxes, drums or Packages 2463 or 2498.....	70
73150	Flour, Meal or Sugar, viz.:	
	Flour , NOI;	
	Meal , NOI, including Corn Meal ;	
	Mixes , baking, NOI, including Bread, Brownie, Cake, Cookie, Muffin, Pancake or Waffle Mixes , see Note, item 73151;	
	Mixes , batter, breading or coating, NOI;	
	Sugar , NOI;	
	In bags, boxes, drums or Packages 128 or 2456, subject to Item 170 and having a density in pounds per cubic foot of:	
Sub 1	Less than 10.....	125
Sub 2	10 but less than 15	85
Sub 3	15 but less than 30	70
Sub 4	30 or greater.....	55
73151	NOTE—Also applies on other ingredients or complement of accessories necessary for completion of the finished product when packaged in same box.	
73250	Foodstuffs , other than frozen, Group III, viz.:	
	Fish Balls ;	
	Juice , clam or oyster;	
	Milk, Cream, Buttermilk or Dry Milk Solids , powdered or flaked, with or without vegetable fats not exceeding one percent by weight, also in multiple-wall paper bags;	
	In boxes, crates, drums or Packages 2463 or 2498.....	60

FREIGHT CLASSIFICATION DOCKET 2024-1

ITEM	ARTICLE	CLASS
73260	<p>FOODSTUFFS GROUP: subject to item 72000</p> <p>Foodstuffs, other than frozen, Group IV, viz.:</p> <p>Baby Food, NOI;</p> <p>Bakery Goods, NOI, also in Package 2428;</p> <p>Beverages or Drinks, NOI, or Beverage or Drink Preparations, NOI, see Note, item 73263, also in Packages 2330 or 2438;</p> <p>Coffee, Tea or Herbal Tea, NOI, see Note, item 73261, also in Packages 2330 or 2380;</p> <p>Cookies or Crackers, NOI, also in Package 2428;</p> <p>Cooking Spray, not required by the U.S. Department of Transportation to bear a Hazard Class or Hazard Division label or placard, see Note, item 73264;</p> <p>Desserts, Dessert Toppings or Related Foods, NOI, not required by the U.S. Department of Transportation to bear a Hazard Class or Hazard Division label or placard, see Note, items 73262 and 73264;</p> <p>Extracts, Flavoring Compounds, Imitation Flavors or Bottlers' Flavoring Compounds, NOI, not required by the U.S. Department of Transportation to bear a Hazard Class or Hazard Division label or placard, see Note, item 73264;</p> <p>Food Curing, Preserving or Seasoning Compounds, NOI;</p> <p>Foodstuffs, NOI, not required by the U.S. Department of Transportation to bear a Hazard Class or Hazard Division label or placard, see Note, item 73264;</p> <p>Gelatine or Pectin, NOI;</p> <p>Honey or Honeycomb, NOI;</p> <p>Hot Chocolate or Hot Cocoa Mixes;</p> <p>Juice, fruit or vegetable, including Juice Concentrates, Juice Beverages, Juice Drinks or Juice Powders or Crystals, see Note, item 73263, also in Packages 2438 or 2467;</p> <p>Oils, cooking or salad, NOI, or Vegetable Oil Shortening;</p> <p>Purees, fruit or vegetable, including Applesauce;</p> <p>Pasta or Noodles, with or without other ingredients;</p> <p>Rice, cleaned or prepared, NOI, with or without other ingredients;</p> <p>Shells, taco, or Tortillas;</p> <p>Snack Foods, NOI;</p> <p>Soups or Soup Mixes;</p> <p>Yeast, dry or liquid;</p> <p>In bags, boxes, drums or Packages 128, 223, 510, 1000, 1400, 1500, 2093, 2231, 2404, 2414, 2416, 2421, 2425, 2463, 2498 or 2507, subject to Item 170 and having a density in pounds per cubic foot of:</p> <p>Sub 1 Less than 1 400</p> <p>Sub 2 1 but less than 2 300</p> <p>Sub 3 2 but less than 4 250</p> <p>Sub 4 4 but less than 6 175</p> <p>Sub 5 6 but less than 8 125</p> <p>Sub 6 8 but less than 10 100</p> <p>Sub 7 10 but less than 12 92.5</p> <p>Sub 8 12 but less than 15 85</p> <p>Sub 9 15 but less than 22.5 70</p> <p>Sub 10 22.5 but less than 30 65</p> <p>Sub 11 30 or greater 60</p>	
73261	<p>NOTE—Also applies on: instant, soluble, freeze-dehydrated or freeze-dried coffee, tea or herbal tea; coffee, tea or herbal tea in premeasured servings, with or without integral filter; or Coffee Service Kits or Sets, consisting of coffee in premeasured servings, with or without integral filter, and with or without non-dairy creamer, sugar or artificial sweetener, stirrers, tea, herbal tea or hot chocolate in same box.</p>	
73262	<p>NOTE—Provisions for desserts, dessert toppings or related foods include, but are not limited to:</p> <p>Crusts, pie or tart;</p> <p>Dessert Mixes or Preparations, NOI;</p> <p>Dishes, Bowls, Ice Cream Cones or Shells, edible, NOI;</p> <p>Dough, prepared;</p> <p>Gelatine Dessert;</p> <p>Sauces or Toppings, ice cream or dessert, NOI, including Marshmallow Creme, Nuts (Nutmeats) in Syrup, or Sprinkles.</p>	
73263	<p>NOTE—Also applies on: freeze-dehydrated or freeze-dried beverage or drink preparations or juice powders or crystals.</p>	
73264	<p>NOTE—Does not apply on materials regulated by the U.S. Department of Transportation as hazardous and required to bear a Hazard Class or Hazard Division label or placard. For classes applicable to such hazardous materials, see provisions elsewhere in this Classification.</p>	
73365	<p>Fruits or Vegetables, canned or preserved, NOI, other than dehydrated, dried or evaporated, see Note, item 73366, in boxes, drums or Packages 1000, 1264, 2288, 2303, 2438, 2463, 2467, 2498 or 2507</p>	60
73366	<p>NOTE—Also applies on:</p> <p>Beans, edible, with or without other ingredients, NOI;</p> <p>Fruit Butter or Pulp;</p> <p>Jams, Jellies, Marmalades or Preserves, NOI;</p> <p>Mushrooms, other than truffles;</p> <p>Olives;</p> <p>Pickles, NOI;</p> <p>Pimientos;</p> <p>Tomatoes, including Tomato Paste, Tomato Pulp or Tomato Puree.</p>	
73770	<p>Malt and Milk Compound, not malted milk, in bags, boxes or drums</p>	65

FREIGHT CLASSIFICATION DOCKET 2024-1

ITEM	ARTICLE	CLASS
	FOODSTUFFS GROUP: subject to item 72000	
73840	Meat, Fruit or Vegetable Substitutes , processed from vegetable or soya bean products, peanuts, grain products or seasoning:	
Sub 1	In inner containers, other than glass or metal inner containers, in boxes.....	77.5
Sub 2	In bulk in bags, in glass or metal inner containers in boxes, or in Packages 510, 1000 or 2231.....	60
73860	Milk , malted, in boxes or drums.....	65
73990	Milk , condensed or evaporated, liquid, with or without vegetable fats, in boxes, drums or Packages 1000, 2463 or 2498.....	55
74020	Milk Food , including Infant Formula , liquid, in boxes, drums or Packages 1000, 1428 or 2506, see Note, item 74032:	
Sub 1	Containing less than 25 percent by weight of ingredients other than milk.....	60
Sub 2	Containing 25 percent or more by weight of ingredients other than milk.....	65
74030	Milk Food , including Infant Formula , other than malted milk, other than liquid, in boxes, drums or Package 1428, see Note, item 74032.....	85
74032	NOTE—Each inner package may contain not to exceed one 1-ounce package of vitamins, one feeding nipple, one tube of ointment not exceeding one-half ounce, one plastic cup, or packets of artificial flavoring not to exceed a combined weight of one-half ounce.	
74035	Milk or Cream Products , shelf-stable, viz.:	
	Milk or Cream , liquid, including Milk Beverages or Milk Drinks;	
	Milk or Cream Substitutes , including Nondairy Creamers or Plant-Based Milk or Cream Products , NOI;	
	In boxes, drums or Packages 2463 or 2498.....	65
74043	Milk Sugar (Lactose) , crude, in bags, boxes, drums or Package 71.....	65
74045	Milk Sugar (Lactose) , refined, in bags, boxes, drums or Package 71.....	70
74095	Molasses or Syrups , not medicated, see Note, item 74096, viz.:	
	Agave Syrup (Agave Nectar);	
	Beverage or Fountain Syrup;	
	Flavoring Syrup;	
	Maple Syrup;	
	Molasses , NOI;	
	Syrup , corn, rye, sorghum or wheat, NOI;	
	Syrup , malt or malted;	
	Syrup , NOI;	
	In boxes, drums or Packages 1000, 2035, 2288, 2402, 2463, 2467 or 2498.....	65
74096	NOTE—Also applies on dehydrated syrups.	
74580	Rice , rough, in bags.....	50
74620	Salad Dressing Preparations , dry, in boxes, drums or Package 2283.....	70
74700	Sauces, Condiments, Dips or Spreads , other than dry, viz.:	
	Barbecue Sauce;	
	Condiments , NOI;	
	Dips , NOI;	
	Gravy;	
	Horseradish , prepared;	
	Hot Sauce or Pepper Sauce;	
	Ketchup (Catsup);	
	Marinades;	
	Mayonnaise;	
	Mustard , prepared;	
	Salad Dressing , including Vinaigrette;	
	Salsa;	
	Sandwich Spreads , NOI, including Cheese Spreads;	
	Sauces , basic food, NOI, including Marinara, Pizza or Spaghetti Sauce;	
	Sauces , cooking or dipping, NOI;	
	Soy Sauce;	
	In boxes, drums or Packages 1204, 1400, 1429, 2093, 2288, 2303, 2438, 2463, 2467 or 2498.	65
74840	Soybean Milk Compound , including Infant Formula , in bags, boxes, drums or Package 1000.....	60
75100	Sweeteners , NOI, including Sugar Alcohols , see Note, item 75101, in bags, boxes, drums or Package 2407, subject to Item 170 and having a density in pounds per cubic foot of:	
Sub 1	Less than 8.....	150
Sub 2	8 but less than 12.....	100
Sub 3	12 or greater.....	70
75101	NOTE—Does not apply on syrups.	
89230	Grain or Grain Products , see Note, item 89231, viz.:	
	Barley;	
	Corn;	
	Feed , NOI, other than prepared animal, fish or poultry feed;	
	Grain or Grain Products , NOI;	
	Grits , NOI;	
	Malt;	
	Oats;	
	Rye;	
	Wheat;	
	In bags, boxes or drums.....	65
89231	NOTE—Does not apply on grain represented as 'seed.' For applicable provisions, see item 173720.	

THIS PAGE INTENTIONALLY LEFT BLANK

FREIGHT CLASSIFICATION DOCKET 2024-1

ITEM	ARTICLE	CLASS
72180-A 72285-A 72310-A 72311-A 72747-A 72748-A 72749-A 72935-A 72960-A 72961-A 72970-A ►73150-A	<p>FOODSTUFFS GROUP: subject to item 72000</p> <p>Beverages or Foods, canned, jacketed by cans containing chemical heating element, with or without water, etc...☒Cancel; obsolete.</p> <p>Butters or Spreads, nut or seed, including Peanut Butter, etc...☒Cancel; see item 74700.</p> <p>Cereals, viz., etc...☒Cancel; see item 73260.</p> <p>NOTE—☒Cancel; no further application.</p> <p>Cultures, bacteria, including Starter Cultures, etc...☒Cancel; see item 73260.</p> <p>NOTE—☒Cancel; see item B-NEW.</p> <p>NOTE—☒Cancel; no further application.</p> <p>Fish, dried or dry salted, flaked or shaved, including Katsuobushi or Bonito Flakes, etc...☒Cancel; see item 73260.</p> <p>Fish or Shellfish, cooked, pickled, preserved or smoked, NOI, etc...☒Cancel; see item 73260.</p> <p>NOTE—☒Cancel; no further application.</p> <p>Fish or Shellfish, dried or dry salted, NOI, etc...☒Cancel; see item 73260.</p> <p>Flour, Meal, Sugar or Related Articles, viz.:</p> <p>Baking Powder;</p> <p>Flour, NOI;</p> <p>Meal, NOI, including Corn Meal;</p> <p>Mixes, baking, NOI, including Bread, Brownie, Cake, Cookie, Muffin, Pancake or Waffle Mixes, see Note, item 73151;</p> <p>Mixes, batter, breading or coating, NOI;</p> <p>Sugar, NOI;</p> <p>Sweeteners, NOI, including Sugar Alcohols, see Note, item A-NEW;</p> <p>In bags, boxes, drums or Packages 128 or 2456, subject to Item 170 and having a density in pounds per cubic foot of:</p>	
Sub 1	Less than 10.....	125
Sub 2	10 but less than 15	85
Sub 3	15 but less than 30	70
Sub 4	30 or greater.....	55
▲73151	NOTE—Also applies on other ingredients or complement of accessories necessary for completion of the finished product when packaged in same box.	
★A-NEW	NOTE—Does not apply on syrups. For applicable provisions, see item 74095.	
73250-A	<p>Foodstuffs, other than frozen, Group III, viz., etc...☒Cancel; see item 73260.</p>	
★B-NEW	NOTE—Applies on cultures, whether freeze-dehydrated or freeze-dried, used in the production of food or beverages.	

ITEM	ARTICLE	CLASS
<p>▶73260-A</p> <p>Sub 1</p> <p>Sub 2</p> <p>Sub 3</p> <p>Sub 4</p> <p>Sub 5</p> <p>Sub 6</p> <p>Sub 7</p> <p>Sub 8</p> <p>Sub 9</p> <p>Sub 10</p> <p>Sub 11</p>	<p>FOODSTUFFS GROUP: subject to item 72000</p> <p>Foodstuffs, other than frozen, Group IV, viz.:</p> <p>Baby Food or Infant Formula, NOI;</p> <p>Bakery Goods, NOI, also in Package 2428;</p> <p>Beverages or Drinks, NOI, or Beverage or Drink Preparations, NOI, see Note, item 73263, also in Packages 2330 or 2438;</p> <p>Cereals, NOI, including Baby Cereals, Granola, Oatmeal or Porridge;</p> <p>Coffee, Tea or Herbal Tea, NOI, see Note, item 73261, also in Packages 2330 or 2380;</p> <p>Cookies or Crackers, NOI, also in Package 2428;</p> <p>Cooking Spray, not required by the U.S. Department of Transportation to bear a Hazard Class or Hazard Division label or placard, see Note, item 73264;</p> <p>Cultures, including Starter Cultures, see Note, item B-NEW;</p> <p>Desserts, Dessert Toppings or Related Foods, NOI, not required by the U.S. Department of Transportation to bear a Hazard Class or Hazard Division label or placard, see Note, items 73262 and 73264;</p> <p>Extracts, Flavoring Compounds, Imitation Flavors or Bottlers' Flavoring Compounds, NOI, not required by the U.S. Department of Transportation to bear a Hazard Class or Hazard Division label or placard, see Note, item 73264;</p> <p>Fish or Shellfish, cooked, dried or preserved, NOI;</p> <p>Food Curing, Preserving or Seasoning Compounds, NOI;</p> <p>Foodstuffs, NOI, not required by the U.S. Department of Transportation to bear a Hazard Class or Hazard Division label or placard, see Note, item 73264;</p> <p>Gelatine or Pectin, NOI;</p> <p>Honey or Honeycomb, NOI;</p> <p>Hot Chocolate or Hot Cocoa Mixes;</p> <p>Juice, fruit or vegetable, including Juice Concentrates, Juice Beverages, Juice Drinks or Juice Powders or Crystals, see Note, item 73263, also in Packages 2438 or 2467;</p> <p>Milk or Cream Products, or Milk or Cream Substitutes, shelf-stable, NOI;</p> <p>Oils, cooking or salad, NOI, or Vegetable Oil Shortening;</p> <p>Purees, fruit or vegetable, including Applesauce;</p> <p>Pasta or Noodles, with or without other ingredients;</p> <p>Rice, cleaned or prepared, NOI, with or without other ingredients;</p> <p>Shells, taco, or Tortillas;</p> <p>Snack Foods, NOI;</p> <p>Soups or Soup Mixes;</p> <p>Yeast, dry or liquid;</p> <p>In bags, boxes, drums or Packages 128, 223, 510, 1000, 1400, 1500, 2093, 2231, 2404, 2414, 2416, 2421, 2425, 2463, 2498 or 2507, subject to Item 170 and having a density in pounds per cubic foot of:</p> <p>Less than 1 400</p> <p>1 but less than 2 300</p> <p>2 but less than 4 250</p> <p>4 but less than 6 175</p> <p>6 but less than 8 125</p> <p>8 but less than 10 100</p> <p>10 but less than 12 92.5</p> <p>12 but less than 15 85</p> <p>15 but less than 22.5 70</p> <p>22.5 but less than 30 65</p> <p>30 or greater 60</p>	
<p>△73261</p>	<p>NOTE—Also applies on: instant, soluble, freeze-dehydrated or freeze-dried coffee, tea or herbal tea; coffee, tea or herbal tea in premeasured servings, with or without integral filter; or Coffee Service Kits or Sets, consisting of coffee in premeasured servings, with or without integral filter, and with or without non-dairy creamer, sugar or artificial sweetener, stirrers, tea, herbal tea or hot chocolate in same box.</p>	
<p>△73262</p>	<p>NOTE—Provisions for desserts, dessert toppings or related foods include, but are not limited to:</p> <p>Crusts, pie or tart;</p> <p>Dessert Mixes or Preparations, NOI;</p> <p>Dishes, Bowls, Ice Cream Cones or Shells, edible, NOI;</p> <p>Dough, prepared;</p> <p>Gelatine Dessert;</p> <p>Sauces or Toppings, ice cream or dessert, NOI, including Marshmallow Creme, Nuts (Nutmeats) in Syrup, or Sprinkles.</p>	
<p>△73263</p>	<p>NOTE—Also applies on freeze-dehydrated or freeze-dried beverage or drink preparations or juice powders or crystals.</p>	
<p>△73264</p>	<p>NOTE—Does not apply on materials regulated by the U.S. Department of Transportation as hazardous and required to bear a Hazard Class or Hazard Division label or placard. For classes applicable to such hazardous materials, see provisions elsewhere in this Classification.</p>	
<p>▶73365-A</p> <p>Sub 1</p> <p>Sub 2</p> <p>Sub 3</p>	<p>Fruits or Vegetables, canned or preserved, NOI, other than dehydrated, dried or evaporated, see Note, item 73366, in boxes, drums or Packages 1000, 1264, 2288, 2303, 2438, 2463, 2467, 2498 or 2507, subject to Item 170 and having a density in pounds per cubic foot of:</p> <p>Less than 22.5 70</p> <p>22.5 but less than 30 65</p> <p>30 or greater 55</p>	

FREIGHT CLASSIFICATION DOCKET 2024-1

ITEM	ARTICLE	CLASS
<p>89230-A</p> <p>△89231</p>	<p>Grain or Grain Products, see Note, item 89231, viz.:</p> <p>Barley;</p> <p>Corn;</p> <p>Feed, NOI, other than prepared animal, fish or poultry feed;</p> <p>Grain or Grain Products, NOI;</p> <p>Grits, NOI;</p> <p>Malt;</p> <p>Oats;</p> <p>▶Rice, including Rough Rice;</p> <p>Rye;</p> <p>Wheat;</p> <p>In bags, boxes or drums</p> <p>NOTE—Does not apply on grain represented as 'seed.' For applicable provisions, see item 173720.</p>	<p>65</p>

SUBJECT 2

Re: Agricultural Implements, other than hand, and Agricultural Implements Parts Groups

Contact: Adam C. Mercer Telephone — (703) 838-1911 mercer@nmfta.org

Proponent: Freight Classification Development Council

Present Classification Provisions

See Appendix A herein.

Proposed Classification Provisions

See Appendix B herein.

Analysis

Introduction

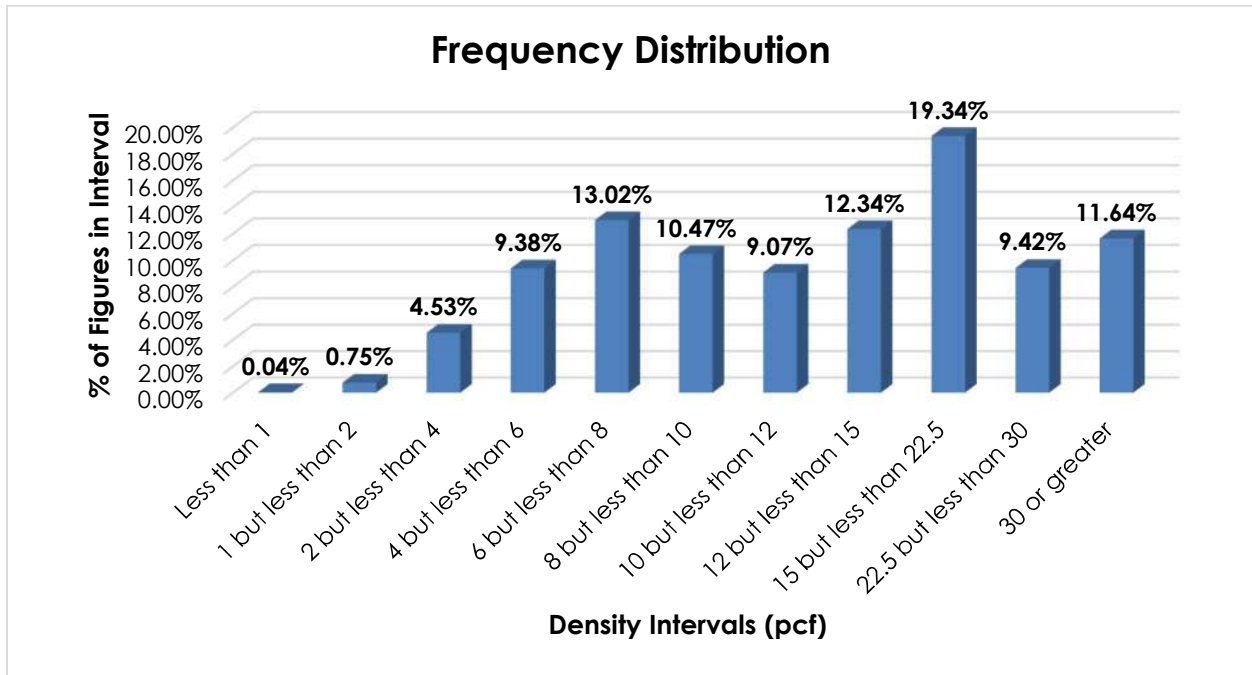
Numerous items in the Agricultural Implements, other than hand, and Agricultural Implements Parts Groups name particular types of agricultural implements and agricultural implements parts, and these provisions can be difficult to interpret, apply or verify. The transportation characteristics below relate to the items subject to the Agricultural Implements, other than hand, and Agricultural Implements Parts Groups, as shown in the Present Classification Provisions herein.

Transportation Characteristics

Density—The information of record includes 63,860 density observations obtained from the FCDC's Density Study¹. The densities range from 0.62 to 63.07 pcf, with an overall average density of 15.93 pcf. As shown in the graph on the following page, the densities are distributed throughout the range, with a distinct peak in the 15 but less than 22.5 pcf interval. Density breaks at 8, 12 and 22.5 pcf reflect the modality and spread of the distribution.

¹ The Density Study is part of an ongoing effort by the FCDC to collect information on actual shipments across all product categories handled by the LTL industry. Carriers that choose to participate in the Study periodically submit shipment data captured through their respective freight auditing programs. The FCDC uses verifiable data points, identified by NMFC item, that include the weight and the dimensions and/or cube of the shipping unit.

SUBJECT 2



When the data is evaluated based on the proposed density breaks at 8, 12 and 22.5 pcf, the density ranges and averages shown in the table below emerge.

Density Groups (pcf)	Density Range (pcf)	Average Density (pcf)
Less than 8	0.62 – 7.99	5.55
8 but less than 12	8.00 – 11.99	9.88
12 but less than 22.5	12.00 – 22.49	16.37
22.5 or greater	22.50 – 63.07	34.56

Handling—Agricultural implements may be shipped in boxes or crates, or in packages other than boxes or crates. Articles shipped in boxes or crates should not typically present unusual or significant handling considerations.

When tendered in packages that provide minimal exterior protection, additional care must be taken when handling the freight to avoid damaging the products or other freight.

Stowability—When agricultural implements are tendered in boxes or crates, a flat load-bearing surface will typically be present, which can allow for loading other freight on top of the handling unit. There will typically be lateral support for adjacent freight as well.

When agricultural implements are tendered in packages other than boxes or crates, a regular load-bearing surface for top freight or lateral support for adjacent freight may not be present. These products may also have protrusions or edges that can potentially be damaged or damage adjacent freight. These factors can result in increased time and effort for the carrier to properly structure the vehicle load to mitigate the chance of damage to the products or other freight.

SUBJECT 2

Liability—As with most general commodities, when tendered for shipment fully enclosed within boxes or crates, agricultural implements should not be unusually susceptible to damage nor likely to damage other freight. However, when tendered in packages other than boxes or crates, they exhibit greater susceptibility to damage. Also, if not properly stowed within the vehicle, they can potentially damage other freight.

Conclusion

Based on the foregoing analysis, this proposal would cancel numerous provisions for specific agricultural implements and agricultural implement parts with reference to a new item, naming “Agricultural Implements, other than hand, or Parts thereof,” with a “viz.” format. Although the densities are distributed throughout the range, providing classes predicated on packaging and density, with breaks at 8, 12 and 22.5 pcf², would more accurately reflect the exacting nature of handling and stowing, as well as account for the potential liability of the inherently larger, more oddly shaped commodities that necessitate packaging that deviates from general boxed freight. The table below relates the information of record to the proposed density groupings and FCDC guidelines for the proposed classes when tendered in boxes or crates and a one-class adjustment from the density guidelines when the articles are tendered in packages other than boxes or crates to reflect the identified negative handling, stowability and liability characteristics.

Density Groups (pcf)	Average Density (pcf)	FCDC Minimum Average Density Guideline (pcf)	Class based on FCDC Density Guidelines	Class Adjustment Based on Handling, Stowability and Liability Considerations
Less than 8	5.55	5	175	200
8 but less than 12	9.88	9	100	110
12 but less than 22.5	16.37	15	70	77.5
22.5 or greater	34.56	30	60	65

Other provisions would be canceled with reference to items 53390³, 156600³ and 177680³, in the interest of clarification and simplification.

Numerous Notes would be canceled as having no further application. Note, item 8902 would be canceled and reestablished as a new attendant Note to the new item to clarify its application. Another Note would be established to provide additional packaging requirements for agricultural implements when tendered in packages other than boxes or crates.

² The density provisions would include reference to Item (Rule) 170, the inadvertence clause.

³ The density provisions include reference to Item (Rule) 170, the inadvertence clause.

THIS PAGE INTENTIONALLY LEFT BLANK

FREIGHT CLASSIFICATION DOCKET 2024-1

ITEM	ARTICLE	CLASS
8900	AGRICULTURAL IMPLEMENTS, OTHER THAN HAND, GROUP: Articles consist of Agricultural Implements, other than hand, see Notes, items 8902 and 8904, as described in items subject to this grouping.	
8902	NOTE—Also applies on accompanying tools, other than power tools, necessary for the adjustment and operation of the agricultural implement with which shipped.	
8904	NOTE—(a) When provision is made for implements, KD, loose or in bundles, the poles, wheels and other large parts will be accepted loose. Detached small parts must be in boxes or securely wired to frame. (b) Where in the separate descriptions of articles provision is made for KD only, and article is shipped set up, class as agricultural implements, other than hand, NOI, SU.	
8920	Agricultural Implements, other than hand, NOI:	
Sub 1	In boxes or crates, subject to Item 170 and having a density in pounds per cubic foot of:	
Sub 2	Less than 8	200
Sub 3	8 or greater	85
Sub 4	Other than in boxes or crates, subject to Item 170 and having a density in pounds per cubic foot of:	
Sub 5	Less than 8	250
Sub 6	8 or greater	100
8950	Attachments, rotary tilling or turf aerating (Rotary Tillers or Turf Aerators, other than self-propelled), in boxes or crates.....	70
9110	Choppers, Cutters, Pulverizers or Shredders, crop or stalk:	
Sub 1	SU, with wheels on or off.....	200
Sub 2	KD, see Note, item 9112; or with tongue or drawbar and power take-off removed, and levers or other projecting parts removed, folded or lowered, wheels on or off or without wheels.....	85
9112	NOTE—Also applies on accompanying accessorial blower and blow-pipe when detached and taken apart.	
9310	Crushers or Pulverizers, clod.....	70
9320	Cultivators, KD.....	77.5
9340	Cutters, ensilage or feed, NOI, with or without necessary equipment of blow pipes:	
Sub 1	SU	125
Sub 2	KD	100
9385	Distributors, dry fertilizer, broadcast, end gate, in packages	85
9390	Distributors, dry fertilizer, and grain or seed sowers combined, broadcast:	
Sub 1	SU	150
Sub 2	KD	100
9395	Distributors, dry fertilizer, NOI:	
Sub 1	With handles:	
Sub 2	KD, further than detaching of handles	70
Sub 3	Wheels on or off, handles in bundles or detached and tied to frame	85
Sub 4	Without handles:	
Sub 5	SU.....	150
Sub 6	Poles detached, wheels on or off.....	85
9400	Ditchers or Terracers, farm:	
Sub 1	SU, wheels on or off.....	100
Sub 2	KD	70
9420	Driers, crop, farm, wheels on or off or without wheels:	
Sub 1	SU	125
Sub 2	KD	85
9450	Drills or Planters, grain, peanut or seed and Fertilizer Distributors combined, SU, loose or in packages.....	100
9625	Harrows, chain type, with flexible tines, rolled, teeth points not exposed; or Parts thereof; loose	77.5
9632	Harrows, disc (disk), with or without sower attachments:	
Sub 1	SU	150
Sub 2	KD	85
9660	Harrows, spring tooth or peg tooth, KD, in packages, teeth points not exposed	85
9910	Mesh, Netting or Wrap, hay baling or binding, plastic, in packages	70
9920	Mills, feed, farm, see Note, item 9922	85
9922	NOTE—Provisions include not to exceed 50 feet of blow pipe for each mill and not to exceed one air separator or feed collector for each mill.	
9970	Pickups, windrow:	
Sub 1	SU	110
Sub 2	KD	77.5
10020	Planters, grass sprig, with or without fertilizer attachments	100
10025	Planters, potato	85
10040	Plows:	
Sub 1	SU	100
Sub 2	KD, see Note, item 10042	70
10042	NOTE—Plows, KD, must have levers laid down flat and tied to frame, or detached, and coulter blades, handles, poles, seats, singletrees, doubletrees, eveners and wheels detached.	
10090	Presses, hay	85
10100	Pulverizer and Seeder combined, KD	70

FREIGHT CLASSIFICATION DOCKET 2024-1

ITEM	ARTICLE	CLASS
	AGRICULTURAL IMPLEMENTS, OTHER THAN HAND, GROUP: subject to item 8900	
10120	Rakes, KD:	
Sub 1	Teeth attached and not folded	100
Sub 2	Teeth detached; or teeth attached and folded	70
10220	Sowers or Distributors, grain, seed or fertilizer, broadcast:	
Sub 1	KD	85
Sub 2	SU	110
10250	Sprayers, field, self-propelled, straddle type	200
10255	Spreaders, manure, wheeled:	
Sub 1	SU, wheels on or off, power take-off shaft, hitch or pole detached	150
Sub 2	KD beyond having wheels and power take-off shaft, hitch or pole detached, in packages	85
10320	Threshers (Separators) or Harvesters-Threshers (Combines), NOI, Clover Hullers or Corn Shellers	100
10370	Twine, baler or binder, in packages	60
10382	Unloaders, silo, KD	70
	AGRICULTURAL IMPLEMENT PARTS GROUP: subject to item 10540	
10550	Agricultural Implement Parts, other than hand, NOI, other than tanks or hoppers, in packages	92.5
10560	Agricultural Implement Parts, other than hand, NOI, iron, see Note, item 10562:	
Sub 1	Weighing each less than 50 pounds:	
Sub 2	Loose	100
Sub 3	In packages	77.5
Sub 4	Weighing each 50 pounds or over	77.5
10562	NOTE—Also applies on parts made of a combination of iron or steel and other materials, or mixed packages of iron or steel parts and parts made of other materials, provided the weight of the other materials does not exceed 20 percent of the total weight of such combined products or such mixed packages.	
10570	Agricultural Implement Parts, other than hand, NOI, other than tanks or hoppers; plastic or rubber; plastic or rubber combined with less than 80 percent by weight of steel; plastic or rubber combined with metal other than steel; or plastic or rubber combined with fiber, paper or cloth; in packages	85
10580	Agricultural Implement Parts, other than hand, NOI, wooden:	
Sub 1	Finished, in packages	85
Sub 2	In the white, in packages	60
10600	Aprons or Apron Belting, Straps or Buckles, in packages	85
10660	Beams, Tool Bars or Tool Bar Carriers, iron or steel:	
Sub 1	Wheeled, SU, loose or in packages	150
Sub 2	Wheeled, KD, or other than wheeled, loose or in packages	70
10720	Blades or Points, grain or seed drill, in boxes or drums	85
10740	Boxes or Spools, harrow, in bags, boxes or drums	70
10760	Bunchers or Windrowers for mowers:	
Sub 1	KD, in packages	100
Sub 2	SU	200
10840	Cutter Bars, with or without knife sections, in Package 2074	85
10880	Discs or Rolling Coulter Blades:	
Sub 1	In boxes, crates, drums or in packages consisting of not more than 10 discs, nested, cutting edges completely enclosed by band of steel, not less than 22 gauge, securely pressed and crimped at least 1/2 inch around the top and bottom discs	60
Sub 2	Loose	77.5
10900	Discs and Drag Bars combined:	
Sub 1	Loose or in bundles	100
Sub 2	In boxes, crates or drums	70
10960	Guards, knife, with or without guard plates attached, in bags, boxes or drums	70
10980	Guards or Plates, grain lifter, in packages	70
11020	Handles, iron:	
Sub 1	Loose	77.5
Sub 2	In packages	60
11030	Handles, wooden:	
Sub 1	Finished, in packages	85
Sub 2	In the white	60
11050	Harrow Frames:	
Sub 1	KD, in packages	70
Sub 2	SU	100
11060	Heads, corn pickup, harvester-thresher (combine)	200
11070	Hoists, hay press, KD, in bundles	85

FREIGHT CLASSIFICATION DOCKET 2024-1

ITEM	ARTICLE	CLASS
	AGRICULTURAL IMPLEMENT PARTS GROUP: subject to item 10540	
11080	Housings, Shrouds or Hoods, in packages, subject to Item 170 and having a density in pounds per cubic foot of:	
Sub 1	Less than 1	400
Sub 2	1 but less than 2.....	300
Sub 3	2 but less than 4.....	250
Sub 4	4 but less than 6.....	175
Sub 5	6 but less than 8.....	125
Sub 6	8 but less than 10.....	100
Sub 7	10 but less than 12.....	92.5
Sub 8	12 but less than 15.....	85
Sub 9	15 but less than 22.5.....	70
Sub 10	22.5 but less than 30.....	65
Sub 11	30 or greater	60
11110	Knives or Knife Sections, in boxes, or in packages with cutting edges protected	70
11130	Pitmans, in packages.....	70
11140	Plates or Spacers, NOI, cutter bar, in packages	70
11150	Plow Bottoms	77.5
11170	Plow or Cultivator Parts, iron, NOI:	
Sub 1	In packages; or loose if weighing each 15 pounds or over.....	60
Sub 2	Weighing each less than 15 pounds, loose	100
11220	Potato Digger Parts, iron, NOI, in packages.....	77.5
11240	Rasps or Spikes (Teeth) for clover hullers or threshers, in boxes, crates or drums	70
11250	Reels, pickup or cleaning, harvester-thresher (combine), binder or windrow harvester, SU, loose	300
11260	Rollers, harvester-thresher, or cotton or corn picker, rubber or rubber covered steel, new or with new covering, in packages.....	70
11280	Runners or Shoes, harrow, iron, in packages.....	70
11300	Screens (Sieves), for threshers, in boxes, crates or wrapped in fiberboard	70
11370	Spikes or Teeth, harrow	60
11410	Teeth, hay stacker or rake, in packages	70
11470	Trays, tool or harrow weight, iron, in packages.....	70
11490	Tubes, grain drill, rubber, in packages.....	85
11500	Tubes, grain drill, steel, flexible, in boxes, crates or drums	70
11520	Weights, wheel, iron, weighing each 25 pounds or over	50
11540	Wheels, iron, NOI, finished or not finished, with or without lubricators or bearing races, not including machine finished gear or sprocket wheels, see Note, item 11542, in packages:	
Sub 1	With rubber tires.....	85
Sub 2	Without rubber tires.....	70
11542	NOTE—Includes necessary wheel attachments, namely bolts, nuts, lugs, rings, hub extensions, counterweights, rims, rim tools, hub caps and wrenches and hub and drum assembly.	
53390	Cord, Cordage, Rope, other than wire rope, String or Twine, NOI, see Note, item 53392, in boxes or on reels, subject to Item 170 and having a density in pounds per cubic foot of:	
Sub 1	Less than 10	125
Sub 2	10 but less than 15	85
Sub 3	15 or greater	70
53392	NOTE—Does not apply on commodities represented as 'ribbon,' 'thread' or 'yarn.'	

FREIGHT CLASSIFICATION DOCKET 2024-1

ITEM	ARTICLE	CLASS
156600	<p>PLASTIC OR RUBBER ARTICLES GROUP: subject to item 156500</p> <p>Articles, see Note, item 156601, viz.:</p> <p>Articles, NOI;</p> <p>Bands, elastic, including Rubber Bands;</p> <p>Baskets, Holders or Filters, coffee, automatic coffee maker, plastic and cloth combined;</p> <p>Bobbins; Cores, winding or filter; Cop Tubes; Dye Tubes; Pirns; Reels, NOI; or Spools;</p> <p>Car Seats, child or baby;</p> <p>Columns; or other Forms or Shapes, NOI; architectural;</p> <p>Containers, packaging, NOI;</p> <p>Dinnerware or Tableware, NOI;</p> <p>Faucets, NOI, or Bibcocks;</p> <p>Film or Sheeting, foam, cellular, expanded or sponge plastic or rubber, NOI;</p> <p>Garbage, Waste, Refuse or Recycling Cans or Containers;</p> <p>Gloves, see Note, item 156604;</p> <p>Grips, NOI, including Golf Club, Hand Tool or Handlebar Grips;</p> <p>Liners, swimming pool, plastic film or sheeting;</p> <p>Materials, Forms or Shapes, foam, cellular, expanded or sponge plastic or rubber, NOI;</p> <p>Mats, bathtub, shower stall, drainboard, sink or stove protector;</p> <p>Molding, facing, baseboard or cove, foam, cellular, expanded or sponge plastic or rubber, including Ceiling Medallions or Cornices;</p> <p>Molding, other than facing, baseboard or cove;</p> <p>Pipe or Pipe Fittings;</p> <p>Poultry Watering Systems, see Note, item 156603;</p> <p>Straps, Bungee Cord or Shock Cord, lashing, tying or securing, with or without hooks or other fasteners or fittings;</p> <p>Tanks, NOI;</p> <p>Tape, NOI;</p> <p>Tips, crutch or furniture;</p> <p>Tire Patches, Plugs or Liners;</p> <p>Tractor Treads, rubber;</p> <p>Traffic or Road Markers, including Cones, Barrels, Drums or Posts;</p> <p>Tubing, NOI, other than flexible;</p> <p>In boxes, crates, drums or Packages 1078, 1241, 1273 or 2213, see Note, item 156602, subject to Item 170 and having a density in pounds per cubic foot of:</p>	
Sub 1	Less than 1	400
Sub 2	1 but less than 2	300
Sub 3	2 but less than 4	250
Sub 4	4 but less than 6	175
Sub 5	6 but less than 8	125
Sub 6	8 but less than 10	100
Sub 7	10 but less than 12	92.5
Sub 8	12 but less than 15	85
Sub 9	15 but less than 22.5	70
Sub 10	22.5 but less than 30	65
Sub 11	30 or greater	60
156601	NOTE—Except as otherwise specified, this item applies on plastic or rubber articles whether or not of foam, cellular, expanded or sponge construction.	
156602	<p>NOTE—The following departures from packing requirements are permitted:</p> <ol style="list-style-type: none"> 1. Necks of empty carboys may project from boxes or crates. 2. Rigid plastic pipe or tubing, or tubes other than containers, may be shipped in packages with threaded or belled ends protected. 3. Flexible plastic pipe or tubing, or tubes other than containers, may be shipped in coils with threaded or belled ends protected, or on reels. 4. Plastic pipe fittings may be shipped in packages with threaded or belled ends protected. 5. Flexible plastic fencing or mesh, produced by a stretching and extruding process, may be shipped in bundles or rolls. 6. Swimming pool and pond liners may be shipped in bundles or rolls. 7. Plastic plate or sheet with formed interior cells, cavities or flutes may be shipped securely fastened to lift truck skids, pallets or platforms and must not overhang the edges of the lift truck skid, pallet or platform deck. Exposed surfaces and edges must be completely wrapped with plastic film or corrugated fiberboard or protected by wood or similar material. 8. Cups or tumblers, without handles, may be shipped in Packages 2471 or 2505. 9. Not currently used. 10. The following articles may be shipped in packages: <ol style="list-style-type: none"> a. Garbage, waste, refuse or recycling cans or containers; b. Plastic bottle carrying boxes or crates; c. Plastic tanks, other than outer shipping containers; d. Poultry watering systems. e. Traffic or road markers, including cones, barrels, drums or posts. 	
156603	NOTE—Applies on poultry watering systems consisting of pipe, plastic drinkers, water filtering, metering or regulating devices and equipment necessary for installation, with or without other components or accessories.	
156604	NOTE—Does not apply on any commodity which is defined and specified as medical waste in Federal regulations. For applicable class, see item 101682.	

THIS PAGE INTENTIONALLY LEFT BLANK

ITEM	ARTICLE	CLASS
	AGRICULTURAL IMPLEMENTS, OTHER THAN HAND, GROUP: subject to item 8900	
8902-A	NOTE—☒Cancel; see item B-NEW.	
8904-A	NOTE—☒Cancel; no further application.	
8920-A	Agricultural Implements , other than hand, NOI, etc...☒Cancel; see A-NEW.	
8950-A	Attachments , rotary tilling or turf aerating (Rotary Tillers or Turf Aerators , other than self-propelled), etc...☒Cancel; see item A-NEW.	
9110-A	Choppers, Cutters, Pulverizers or Shredders , crop or stalk, etc...☒Cancel; see item A-NEW.	
9112-A	NOTE—☒Cancel; no further application.	
9310-A	Crushers or Pulverizers , clod...☒Cancel; see item A-NEW.	
9320-A	Cultivators , KD...☒Cancel; see item A-NEW	
9340-A	Cutters , ensilage or feed, NOI, etc...☒Cancel; see item A-NEW.	
9385-A	Distributors , dry fertilizer, broadcast, end gate, etc...☒Cancel; see item A-NEW.	
9390-A	Distributors , dry fertilizer, and grain or seed sowers combined, broadcast, etc...☒Cancel; see item A-NEW:	
9395-A	Distributors , dry fertilizer, NOI, etc...☒Cancel; see item A-NEW.	
9400-A	Ditchers or Terracers , farm, etc...☒Cancel; see item A-NEW.	
9420-A	Driers , crop, farm, wheels on or off or without wheels, etc...☒Cancel; see item A-NEW.	
9450-A	Drills or Planters , grain, peanut or seed and Fertilizer Distributors combined , etc...☒Cancel; see item A-NEW.	
9625-A	Harrows , chain type, with flexible tines, rolled, teeth points not exposed, etc...☒Cancel; see item A-NEW.	
9632-A	Harrows , disc (disk), with or without sower attachments, etc...☒Cancel; see item A-NEW.	
9660-A	Harrows , spring tooth or peg tooth, KD, in packages, teeth points not exposed...☒Cancel; see item A-NEW.	
9910-A	Mesh, Netting or Wrap , hay baling or binding, plastic, etc...☒Cancel; see item 156600.	
9920-A	Mills , feed, farm, etc...☒Cancel; see item A-NEW.	
9922-A	NOTE—☒Cancel; no further application.	
9970-A	Pickups , windrow, etc...☒Cancel; see item A-NEW.	
10020-A	Planters , grass sprig, etc...☒Cancel; see item A-NEW.	
10025-A	Planters , potato...☒Cancel; see item A-NEW.	
10040-A	Plows ,etc...☒Cancel; see item A-NEW.	
10042-A	NOTE—☒Cancel; no further application.	
10090-A	Presses , hay...☒Cancel; see item A-NEW.	
10100-A	Pulverizer and Seeder combined , etc...☒Cancel; see item A-NEW.	
10120-A	Rakes , etc...☒Cancel; see item A-NEW.	
10220-A	Sowers or Distributors , grain, seed or fertilizer, broadcast, etc...☒Cancel; see item A-NEW.	
10250-A	Sprayers , field, self-propelled, straddle type...☒Cancel; see item 177680.	
10255-A	Spreaders , manure, wheeled, etc...☒Cancel; see item A-NEW.	
10320-A	Threshers (Separators) or Harvesters-Threshers (Combines) , NOI, Clover Hullers or Corn Shellers ...☒Cancel; see item A-NEW.	
10370-A	Twine , baler or binder, etc...☒Cancel; see item 53390.	
10382-A	Unloaders , silo, etc...☒Cancel; see item A-NEW.	
	AGRICULTURAL IMPLEMENT PARTS GROUP: subject to item 10540	
10550-A	Agricultural Implement Parts , other than hand, NOI, other than tanks or hoppers, etc...☒Cancel; see item A-NEW.	
10560-A	Agricultural Implement Parts , other than hand, NOI, iron, etc...☒Cancel; see item A-NEW.	
10562-A	NOTE—☒Cancel; no further application.	
10570-A	Agricultural Implement Parts , other than hand, NOI, other than tanks or hoppers; plastic or rubber, etc...☒Cancel; see item A-NEW.	
10580-A	Agricultural Implement Parts , other than hand, NOI, wooden, etc...☒Cancel; see item A-NEW.	
10600-A	Aprons or Apron Belting, Straps or Buckles , etc...☒Cancel; see item A-NEW.	
10660-A	Beams, Tool Bars or Tool Bar Carriers , iron or steel, etc...☒Cancel; see item A-NEW.	
10720-A	Blades or Points , grain or seed drill, etc...☒Cancel; see item A-NEW.	
10740-A	Boxes or Spools , harrow, etc...☒Cancel; see item A-NEW.	
10760-A	Bunchers or Windrowers for mowers, etc...☒Cancel; see item A-NEW.	
10840-A	Cutter Bars , with or without knife sections, etc...☒Cancel; see item A-NEW.	
10880-A	Discs or Rolling Coulter Blades , etc...☒Cancel; see item A-NEW.	
10900-A	Discs and Drag Bars combined , etc...☒Cancel; see item A-NEW.	
10960-A	Guards , knife, with or without guard plates attached, etc...☒Cancel; see item A-NEW.	
10980-A	Guards or Plates , grain lifter, etc...☒Cancel; see item A-NEW.	
11020-A	Handles , iron, etc...☒Cancel; see item A-NEW.	
11030-A	Handles , wooden, etc...☒Cancel; see item A-NEW.	
11050-A	Harrow Frames, etc ...☒Cancel; see item A-NEW.	
11060-A	Heads , corn pickup, harvester-thresher (combine)...☒Cancel; see item A-NEW.	
11070-A	Hoists , hay press, etc...☒Cancel; see item A-NEW.	
11080-A	Housings, Shrouds or Hoods , etc...☒Cancel; see item A-NEW.	
11110-A	Knives or Knife Sections , etc...☒Cancel; see item A-NEW.	
11130-A	Pitmans , etc...☒Cancel; see item A-NEW.	
11140-A	Plates or Spacers , NOI, cutter bar, etc...☒Cancel; see item A-NEW.	
11150-A	Plow Bottoms ...☒Cancel; see item A-NEW.	
11170-A	Plow or Cultivator Parts , iron, NOI, etc...☒Cancel; see item A-NEW.	
11220-A	Potato Digger Parts , iron, NOI, etc...☒Cancel; see item A-NEW.	
11240-A	Rasps or Spikes (Teeth) for clover hullers or threshers, etc...☒Cancel; see item A-NEW.	
11250-A	Reels , pickup or cleaning, harvester-thresher (combine), binder or windrow harvester, etc...☒Cancel; see item A-NEW.	

FREIGHT CLASSIFICATION DOCKET 2024-1

ITEM	ARTICLE	CLASS
	AGRICULTURAL IMPLEMENT PARTS GROUP: subject to item 10540	
11260-A	Rollers , harvester-thresher, or cotton or corn picker, rubber or rubber covered steel, new or with new covering, etc... <input type="checkbox"/> Cancel; see item A-NEW.	
11280-A	Runners or Shoes , harrow, iron, etc... <input type="checkbox"/> Cancel; see item A-NEW.	
11300-A	Screens (Sieves) , for threshers, etc... <input type="checkbox"/> Cancel; see item A-NEW.	
11370-A	Spikes or Teeth , harrow... <input type="checkbox"/> Cancel; see item A-NEW.	
11410-A	Teeth , hay stacker or rake, etc... <input type="checkbox"/> Cancel; see item A-NEW.	
11470-A	Trays , tool or harrow weight, iron, etc... <input type="checkbox"/> Cancel; see item A-NEW.	
11490-A	Tubes , grain drill, rubber, etc... <input type="checkbox"/> Cancel; see item A-NEW.	
11500-A	Tubes , grain drill, steel, flexible, etc... <input type="checkbox"/> Cancel; see item A-NEW.	
11520-A	Weights , wheel, iron, weighing each 25 pounds or over... <input type="checkbox"/> Cancel; see item A-NEW.	
11540-A	Wheels , iron, NOI, finished or not finished, with or without lubricators or bearing races, not including machine finished gear or sprocket wheels, etc... <input type="checkbox"/> Cancel; see item A-NEW.	
11542-A	NOTE— <input type="checkbox"/> Cancel; no further application.	
△53390	Cord, Cordage, Rope , other than wire rope, String or Twine , NOI, see Note, item 53392, in boxes or on reels, subject to Item 170 and having a density in pounds per cubic foot of:	
Sub 1	Less than 10.....	125
Sub 2	10 but less than 15.....	85
Sub 3	15 or greater.....	70
△53392	NOTE—Does not apply on commodities represented as 'ribbon,' 'thread' or 'yarn.'	
	MACHINERY GROUP: subject to item 114000	
★A-NEW	Agricultural Implements , other than hand, or Parts thereof , see Note, item B-NEW, viz.: Agricultural Implements , other than hand, NOI; Attachments , tow-behind, NOI; Cutters , NOI; Distributors, Planters, Sowers or Spreaders , fertilizer or seed, NOI; Driers , crop; Mills , feed; Parts , agricultural implement, other than hand, NOI; Pickups , windrow; Plows , NOI; Presses , hay; Unloaders , silo;	
Sub 1	In boxes or crates, subject to Item 170 and having a density in pounds per cubic foot of:	
Sub 2	Less than 8.....	175
Sub 3	8 but less than 12.....	100
Sub 4	12 but less than 22.5.....	70
Sub 5	22.5 or greater.....	60
Sub 6	In packages other than boxes or crates, see Note, item C-NEW, subject to Item 170 and having a density in pounds per cubic foot of:	
Sub 7	Less than 8.....	200
Sub 8	8 but less than 12.....	110
Sub 9	12 but less than 22.5.....	77.5
Sub 10	22.5 or greater.....	65
★B-NEW	NOTE—Also applies on accompanying tools necessary for the adjustment and operation of the agricultural implement with which shipped.	
★C-NEW	NOTE—Articles tendered for shipment on lift truck skids, pallets or platforms must be securely fastened to and must not overhang the edges of the lift truck skid, pallet or platform deck. Exposed surfaces and edges must be protected by packing forms or other packaging materials so as to withstand the normal rigors of the less-than-truckload environment.	

FREIGHT CLASSIFICATION DOCKET 2024-1

ITEM	ARTICLE	CLASS
<p>△156600</p>	<p>PLASTIC OR RUBBER ARTICLES GROUP: subject to item 156500 Articles, see Note, item 156601, viz.: Articles, NOI; Bands, elastic, including Rubber Bands; Baskets, Holders or Filters, coffee, automatic coffee maker, plastic and cloth combined; Bobbins; Cores, winding or filter; Cop Tubes; Dye Tubes; Pirns; Reels, NOI; or Spools; Car Seats, child or baby; Columns; or other Forms or Shapes, NOI; architectural; Containers, packaging, NOI; Dinnerware or Tableware, NOI; Faucets, NOI, or Bibcocks; Film or Sheeting, foam, cellular, expanded or sponge plastic or rubber, NOI; Garbage, Waste, Refuse or Recycling Cans or Containers; Gloves, see Note, item 156604; Grips, NOI, including Golf Club, Hand Tool or Handlebar Grips; Liners, swimming pool, plastic film or sheeting; Materials, Forms or Shapes, foam, cellular, expanded or sponge plastic or rubber, NOI; Mats, bathtub, shower stall, drainboard, sink or stove protector; Molding, facing, baseboard or cove, foam, cellular, expanded or sponge plastic or rubber, including Ceiling Medallions or Cornices; Molding, other than facing, baseboard or cove; Pipe or Pipe Fittings; Poultry Watering Systems, see Note, item 156603; Straps, Bungee Cord or Shock Cord, lashing, tying or securing, with or without hooks or other fasteners or fittings; Tanks, NOI; Tape, NOI; Tips, crutch or furniture; Tire Patches, Plugs or Liners; Tractor Treads, rubber; Traffic or Road Markers, including Cones, Barrels, Drums or Posts; Tubeing, NOI, other than flexible; In boxes, crates, drums or Packages 1078, 1241, 1273 or 2213, see Note, item 156602, subject to Item 170 and having a density in pounds per cubic foot of:</p>	
<p>Sub 1</p> <p>Sub 2</p> <p>Sub 3</p> <p>Sub 4</p> <p>Sub 5</p> <p>Sub 6</p> <p>Sub 7</p> <p>Sub 8</p> <p>Sub 9</p> <p>Sub 10</p> <p>Sub 11</p>	<p>Less than 1.....</p> <p>1 but less than 2.....</p> <p>2 but less than 4.....</p> <p>4 but less than 6.....</p> <p>6 but less than 8.....</p> <p>8 but less than 10.....</p> <p>10 but less than 12.....</p> <p>12 but less than 15.....</p> <p>15 but less than 22.5.....</p> <p>22.5 but less than 30.....</p> <p>30 or greater.....</p>	<p>400</p> <p>300</p> <p>250</p> <p>175</p> <p>125</p> <p>100</p> <p>92.5</p> <p>85</p> <p>70</p> <p>65</p> <p>60</p>
<p>△156601</p>	<p>NOTE—Except as otherwise specified, this item applies on plastic or rubber articles whether or not of foam, cellular, expanded or sponge construction.</p>	
<p>△156602</p>	<p>NOTE—The following departures from packing requirements are permitted:</p> <ol style="list-style-type: none"> 1. Necks of empty carboys may project from boxes or crates. 2. Rigid plastic pipe or tubing, or tubes other than containers, may be shipped in packages with threaded or belled ends protected. 3. Flexible plastic pipe or tubing, or tubes other than containers, may be shipped in coils with threaded or belled ends protected, or on reels. 4. Plastic pipe fittings may be shipped in packages with threaded or belled ends protected. 5. Flexible plastic fencing or mesh, produced by a stretching and extruding process, may be shipped in bundles or rolls. 6. Swimming pool and pond liners may be shipped in bundles or rolls. 7. Plastic plate or sheet with formed interior cells, cavities or flutes may be shipped securely fastened to lift truck skids, pallets or platforms and must not overhang the edges of the lift truck skid, pallet or platform deck. Exposed surfaces and edges must be completely wrapped with plastic film or corrugated fiberboard or protected by wood or similar material. 8. Cups or tumblers, without handles, may be shipped in Packages 2471 or 2505. 9. Not currently used. 10. The following articles may be shipped in packages: <ol style="list-style-type: none"> a. Garbage, waste, refuse or recycling cans or containers; b. Plastic bottle carrying boxes or crates; c. Plastic tanks, other than outer shipping containers; d. Poultry watering systems. e. Traffic or road markers, including cones, barrels, drums or posts. 	
<p>△156603</p>	<p>NOTE—Applies on poultry watering systems consisting of pipe, plastic drinkers, water filtering, metering or regulating devices and equipment necessary for installation, with or without other components or accessories.</p>	
<p>△156604</p>	<p>NOTE—Does not apply on any commodity which is defined and specified as medical waste in Federal regulations. For applicable class, see item 101682.</p>	

FREIGHT CLASSIFICATION DOCKET 2024-1

ITEM	ARTICLE	CLASS
△177680 Sub 1 Sub 2 Sub 3 Sub 4 Sub 5 Sub 6 △177682 △177684	<p>Sprayers, NOI, see Note, item 177682; Steam or Water Cleaning Outfits, separate or combined; or Snowmaking Machines; wheeled; trailer mounted; with integral skid bases; or for trailer, vehicle, aircraft or wheel mounting; with or without engines:</p> <p>In boxes or crates, subject to Item 170 and having a density in pounds per cubic foot of:</p> <p> Less than 8.....</p> <p> 8 or greater.....</p> <p>In packages other than boxes or crates, see Note, item 177684, subject to Item 170 and having a density in pounds per cubic foot of:</p> <p> Less than 8.....</p> <p> 8 or greater.....</p> <p>NOTE—Applies on sprayers of liquids or powders.</p> <p>NOTE—Small detachable parts must be in boxes or in sprayer barrel or tank.</p>	<p>150</p> <p>92.5</p> <p>250</p> <p>110</p>

SUBJECT 3

Re: Conveyors, Elevators or Lifts, or Parts thereof

Contact: Larissa A. Franklin Telephone — (703) 838-1824 franklin@nmfta.org

Proponent: Freight Classification Development Council

Present Classification Provisions

Item	Description	Class
	MACHINERY GROUP: subject to item 114000	
120000	Elevators, Conveyors, or Parts Named:	
120020	Conveyors:	
120040	Gravity chute, steel:	
Sub 1	SU or in SU sections	100
Sub 2	KD, in packages	77.5
120060	Gravity roller:	
Sub 1	SU or in SU sections	85
Sub 2	KD, in packages	77.5
120070	Conveyors , drag-line or overhead runway, in packages, see Note, item 120071	65
120071	NOTE—Applies only on rails or tracks and rail or track hangers, switches, track rollers, roller chains, power drives or nuts and bolts or other fittings for assembly. Tracks consisting of rails and arch beams may be shipped loose and power drives may be on skids.	
120080	Conveyors, Elevators or Lifts , NOI:	
Sub 1	In boxes or crates, subject to Item 170 and having a density in pounds per cubic foot of:	
Sub 2	Less than 6	300
Sub 3	6 but less than 10.....	150
Sub 4	10 or greater.....	77.5
Sub 5	In packages other than boxes or crates, subject to Item 170 and having a density in pounds per cubic foot of:	
Sub 6	Less than 6	300
Sub 7	6 but less than 10.....	175
Sub 8	10 or greater.....	85
120090	Conveyors , portable, with electric motor driven steel spring belts and electric motor self-propelling drive mechanism.....	200
120140	Spiral Screw Conveyor Parts:	
120160	Box Ends (Trough Ends), Gates or Spirals (Flights mounted on pipe or shaft), steel, in packages.....	77.5
120180	Box Linings (Trough Linings) , steel, loose or in packages, or Flights , steel, nested, in bundles or in packages.....	65
120200	Boxes (Troughs) , with or without gear attached, in packages	85
120220	Couplings , spiral conveyor or shaft, steel, in packages	60

SUBJECT 3

Present Classification Provisions — Concluded

Item	Description	Class
	MACHINERY GROUP: subject to item 114000	
	Elevators, Conveyors, or Parts Named: subject to item 120000	
120240	Conveyor Parts , other than spiral screw conveyor parts:	
120260	Belt-support Intermediate Sections, KD, or Side Angles, Side Channels, Deck Covers, Frames or Conveyor Idler Supports , loose or in packages.....	65
120280	Conveyor Belts:	
Sub 1	Steel wire.....	70
Sub 2	Strip steel.....	85
120300	Conveyor Idlers (Rolls)	70
120320	Conveyor Trippers	85
120340	Chain and Steel Flights , assembled, in packages	77.5
120350	Ends or Wheels , gravity conveyor roller, or Wheels , gravity wheel conveyor, steel, in boxes	65
120360	Flights , steel	65
120380	Flights , wooden, in packages.....	65
120390	Tracks or Rails , carrier or conveyor (overhead runway), sheet or plate steel.....	55
120400	Troughs , shaker, iron or steel, 7 gauge or thicker	70
120500	Elevator Machines , freight or passenger, see Note, item 120501, in packages.....	85
120501	NOTE—Applies only on elevating or traction machines used to power elevators or elevator systems. Does not apply on elevator cars, components or assemblies constituting a complete elevator or elevator system.	
120540	Elevator Parts:	
120560	Elevator Boots or Heads , iron or steel	85
120580	Elevator Buckets , iron or steel:	
Sub 1	Not nested, NOI, loose or in bundles	85
Sub 2	Not nested, NOI, in boxes or crates	70
Sub 3	Cast malleable iron, partially nested, see Note, item 120582	60
Sub 4	Nested, in packages:	
Sub 5	Other than cast malleable iron.....	60
Sub 6	Cast malleable iron.....	55
120582	NOTE—Item 110, Sec. 13(a) will govern except that the words ‘two-thirds of its height’ may be substituted for ‘one-third of its height.’	
120600	Elevator Buckets , metal, NOI, in boxes, crates or drums:	
Sub 1	Not nested.....	100
Sub 2	Nested.....	92.5
120620	Elevator Legs , iron or steel:	
Sub 1	SU.....	100
Sub 2	KD, in packages	85
120680	Stackers , bag, portable, with stacker belts retracted to a height not exceeding 3 feet, with hydraulic belt lift.....	100

SUBJECT 3

Proposed Classification Provisions

Item	Description	Class
	MACHINERY GROUP: subject to item 114000	
120000	Elevators, Conveyors, or Parts Named:	⇒Cancel; no further application
120020	Conveyors	⇒Cancel; see item A-NEW
120040	Gravity chute, steel, etc	⇒Cancel; see item A-NEW
120060	Gravity roller, etc	⇒Cancel; see item A-NEW
120070	Conveyors , drag-line or overhead runway, etc	⇒Cancel; see item A-NEW
120071	NOTE—	⇒Cancel; no further application.
120080	Conveyors, Elevators or Lifts , NOI, etc	⇒Cancel; see item A-NEW
120090	Conveyors , portable, with electric motor driven steel spring belts and electric motor self-propelling drive mechanism.....	⇒Cancel; see item A-NEW
120140	Spiral Screw Conveyor Parts:	⇒Cancel; no further application
120160	Box Ends (Trough Ends), Gates or Spirals (Flights mounted on pipe or shaft), steel, etc	⇒Cancel; see item A-NEW
120180	Box Linings (Trough Linings) , steel, loose or in packages, or Flights , steel, nested, etc	⇒Cancel; see item A-NEW
120200	Boxes (Troughs) , with or without gear attached, etc	⇒Cancel; see item A-NEW
120220	Couplings , spiral conveyor or shaft, steel, etc.....	⇒Cancel; see item A-NEW
120240	Conveyor Parts , other than spiral screw conveyor parts:.....	⇒Cancel; no further application
120260	Belt-support Intermediate Sections, KD, or Side Angles, Side Channels, Deck Covers, Frames or Conveyor Idler Supports , etc	⇒Cancel; see item A-NEW
120280	Conveyor Belts , etc	⇒Cancel; see item A-NEW
120300	Conveyor Idlers (Rolls)	⇒Cancel; see item A-NEW
120320	Conveyor Trippers	⇒Cancel; see item A-NEW
120340	Chain and Steel Flights , assembled, etc	⇒Cancel; see item A-NEW

SUBJECT 3

Proposed Classification Provisions — Continued

Item	Description	Class
	MACHINERY GROUP: subject to item 114000	
	Elevators, Conveyors, or Parts Named: subject to item 120000	
	Conveyor Parts, other than spiral screw conveyor parts: subject to item 120240	
120350	Ends or Wheels, gravity conveyor roller, or Wheels, gravity wheel conveyor, steel, etc	⇒Cancel; see item A-NEW
120360	Flights, steel	⇒Cancel; see item A-NEW
120380	Flights, wooden, etc	⇒Cancel; see item A-NEW
120390	Tracks or Rails, carrier or conveyor (overhead runway), sheet or plate steel.....	⇒Cancel; see item A-NEW
120400	Troughs, shaker, iron or steel, 7 gauge or thicker	⇒Cancel; see item A-NEW
120500	Elevator Machines, freight or passenger, etc	⇒Cancel; see item A-NEW
120501	NOTE—⇒Cancel; no further application.	
120540	Elevator Parts:	⇒Cancel; no further application
120560	Elevator Boots or Heads, iron or steel	⇒Cancel; see item A-NEW
120580	Elevator Buckets, iron or steel, etc.....	⇒Cancel; see item A-NEW
120582	NOTE—⇒Cancel; no further application.	
120600	Elevator Buckets, metal, NOI, etc.....	⇒Cancel; see item A-NEW
120620	Elevator Legs, iron or steel, etc	⇒Cancel; see item A-NEW
120680	Stackers, bag, portable, with stacker belts retracted to a height not exceeding 3 feet, with hydraulic belt lift	⇒Cancel; see item A-NEW

SUBJECT 3

Proposed Classification Provisions — Concluded

Item	Description	Class
	MACHINERY GROUP: subject to item 114000	
⇒A-NEW	Conveyors, Elevators or Lifts, or Parts thereof, NOI, in packages, see Note, item B-NEW:	
Sub 1	Greatest dimension exceeding 288 inches, subject to Item 170 and having a density in pounds per cubic foot of:	
Sub 2	Less than 8	300
Sub 3	8 but less than 15	125
Sub 4	15 but less than 30	92.5
Sub 5	30 or greater.....	70
Sub 6	Greatest dimension exceeding 192 inches but not exceeding 288 inches, subject to Item 170 and having a density in pounds per cubic foot of:	
Sub 7	Less than 8	250
Sub 8	8 but less than 15	110
Sub 9	15 but less than 30	85
Sub 10	30 or greater.....	65
Sub 11	Greatest dimension exceeding 96 inches but not exceeding 192 inches, subject to Item 170 and having a density in pounds per cubic foot of:	
Sub 12	Less than 8	200
Sub 13	8 but less than 15	100
Sub 14	15 but less than 30	77.5
Sub 15	30 or greater.....	60
Sub 16	Greatest dimension not exceeding 96 inches, subject to Item 170 and having a density in pounds per cubic foot of:	
Sub 17	Less than 8	175
Sub 18	8 but less than 15	92.5
Sub 19	15 but less than 30	70
Sub 20	30 or greater.....	55
⇒B-NEW	NOTE—Articles tendered for shipment on lift truck skids, pallets or platforms must be securely fastened to and must not overhang the edges of the lift truck skid, pallet or platform deck. Exposed surfaces and edges must be protected by packing forms or other packaging materials so as to withstand the normal rigors of the less-than-truckload environment.	

SUBJECT 3

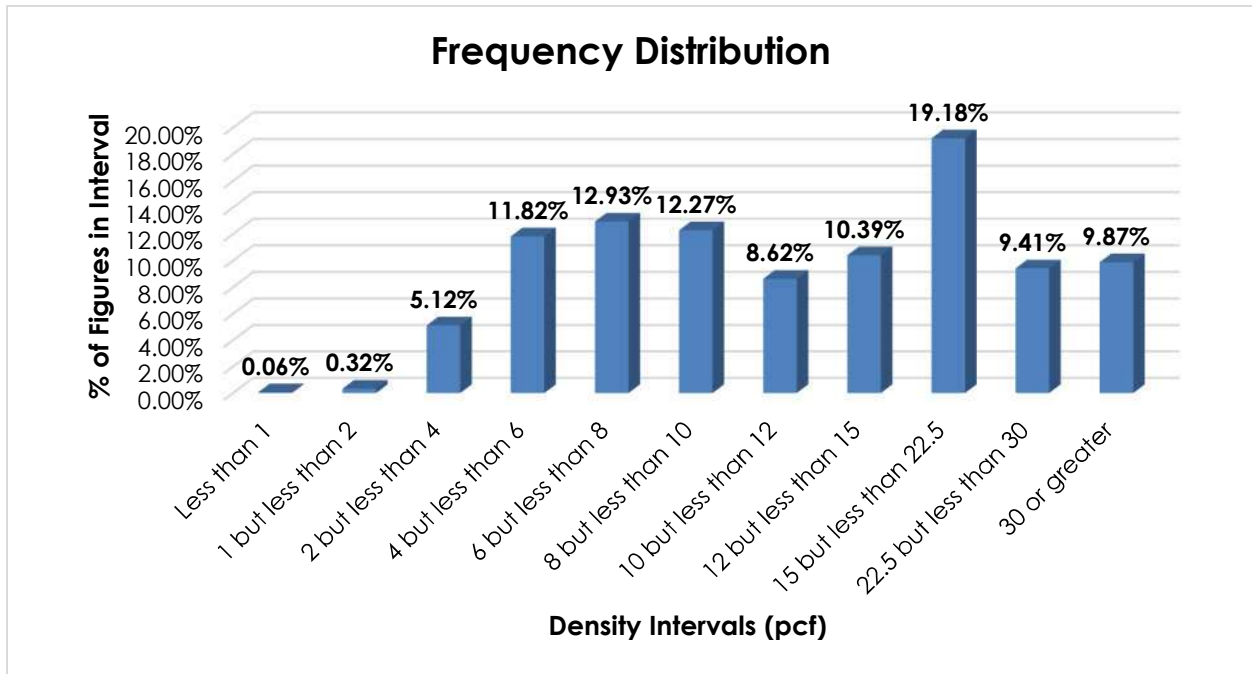
Analysis

Introduction

This proposal responds to the summation of Research Project 1518, which sought to review the transportation characteristics of gravity chute or gravity roller conveyors, as named in items 120040 and 120060, respectively. During the course of research, the project expanded to include all items subject to Elevators, Conveyors, or Parts Named subgeneric heading, as shown in the Present Classification Provisions herein.

Transportation Characteristics

Density—The information of record includes 129,859 density observations submitted by carriers and obtained from the FCDC’s Density Study¹. The densities range from 0.41 to 59.93 pcf, with an overall average density of 15.02 pcf. As shown in the graph below, the density distribution is relatively uniform between 4 and 10 pcf, with a distinct peak in the 15 but less than 22.5 pcf interval. Density breaks at 8, 15 and 30 pcf reflect the modality and spread of the distribution.



When the data is evaluated based on the proposed density breaks at 8, 15 and 30 pcf, the density ranges and averages shown in the table on the following page emerge.

¹ The Density Study is part of an ongoing effort by the FCDC to collect information on actual shipments across all product categories handled by the LTL industry. Carriers that choose to participate in the Study periodically submit shipment data captured through their respective freight auditing programs. The FCDC uses verifiable data points, identified by NMFC item, that include the weight and the dimensions and/or cube of the shipping unit.

SUBJECT 3

Density Groups (pcf)	Density Range (pcf)	Average Density (pcf)
Less than 8	0.41 – 7.99	5.55
8 but less than 15	8.00 – 14.99	10.99
15 but less than 30	15.00 – 29.99	20.87
30 or greater	30.00 – 59.93	39.91

Handling—When not exceeding 96 inches in greatest dimension, the involved products may be tendered in boxes secured on lift truck skids or pallets, or in crates, but as greatest dimension increases, the commodities are typically tendered in packages other than boxes or crates. When not exceeding 96 inches in greatest dimension, the involved articles do not appear to have any significant handling issues. However, these commodities vary greatly in size, and the data of record shows that numerous observations exceed 96 inches (8 feet) in greatest dimension², with some exceeding 288 inches (24 feet). As greatest dimension increases, the handling into and out of the vehicle becomes considerably more difficult, and specialized equipment, or additional personnel, may be necessary to safely handle longer units. Furthermore, as greatest dimension increases, cross-dock operations can be significantly affected. Often there is not enough room at carrier facilities to safely or easily handle and maneuver excessively long handling units.

Stowability—When the involved articles do not exceed 96 inches in greatest dimension, they typically do not present significant or unusual stowability issues. Handling units exceeding 96 inches in greatest dimension are more difficult to stow with other general freight, particularly as they may lack a flat load-bearing surface for top freight. Due to the commodities’ size and configuration, it may be difficult to stow adjacent freight. These products may also have protrusions or edges that can potentially be damaged or damage adjacent freight. These factors can make it more difficult and time consuming for the carrier to properly structure the load and maximize vehicle utilization. Furthermore, for the longest articles, the carrier will have to ensure that the freight will fit in the vehicle.

Liability—The involved products are neither perishable nor hazardous. Shipments of these commodities not adequately protected by packaging materials or that overhang the lift truck skid or pallet are more liable to damage, such as bending, denting, and scuffing. Also, they can damage other freight if not correctly stowed within the vehicle.

Conclusion

Based on the foregoing analysis, this proposal would cancel all items subject to the Elevators, Conveyors, or Parts Named subgeneric heading with reference to a new item, naming “Conveyors, Elevators or Lifts, or Parts thereof, NOI.” The new item would provide classes predicated on greatest dimension and density, with breaks at 8, 15 and 30 pcf³. The table on the following page shows the average densities and minimum average density guidelines for each density group, the guideline classes, and class adjustments as greatest dimension increases.

² Item (Rule) 568, “Heavy or Bulky Freight—Loading or Unloading,” employs the threshold limit of exceeding 8 feet (96 inches) in greatest dimension as the measurement at which freight becomes more difficult to load and unload when compared to general boxed freight.

³ The density provisions would include reference to Item (Rule) 170, the inadvertence clause.

SUBJECT 3

Density Group (pcf)	Average Density (pcf)	FCDC Minimum Average Density Guideline (pcf)	Class Based on FCDC Density Guidelines When Greatest Dimension Does Not Exceed 96"	Class Adjustment When Greatest Dimension Exceeds 96" But Does Not Exceed 192"	Class Adjustment When Greatest Dimension Exceeds 192" But Does Not Exceed 288"	Class Adjustment When Greatest Dimension Exceeds 288"
Less than 8	5.55	5	175	200	250	300
8 but less than 15	10.99	10.5	92.5	100	110	125
15 but less than 30	20.87	15	70	77.5	85	92.5
30 or greater	39.91	35	55	60	65	70

Notes, items 120071, 120501 and 120582 would be canceled as having no further application, as would multiple subgeneric headings, items 120000, 120140, 120240 and 120540.

A new attendant Note would be established to provide additional packaging requirements. The minimum packaging requirements would ensure that freight is adequately protected and can be handled and stowed in a manner that is reasonably safe and practicable so as to withstand the normal rigors of the less-than-truckload environment.

SUBJECT 4

Re: Presses

Contact: Ashley L. Gencarelli Telephone — (703) 838-1809 gencarelli@nmfta.org

Proponent: Freight Classification Development Council

Present Classification Provisions

Item	Description	Class
	MACHINERY GROUP: subject to item 114000	
127000	Presses:	
127020	Baling, NOI:	
Sub 1	SU, loose or on skids	125
Sub 2	SU, in boxes or crates.....	100
Sub 3	KD, in packages.....	77.5
127040	Fruit or Vegetable, NOI:	
Sub 1	Loose or on skids, see Note, item 127042.....	100
Sub 2	In boxes or crates.....	92.5
127042	NOTE—'Loose or on skids' applies only on fruit presses of the wooden tub type.	
127060	Hydraulic Wheel:	
Sub 1	SU.....	100
Sub 2	KD.....	70
127080	Metal Drawing, Extruding, Forging, Piercing, Punching, Shearing or Stamping:	
Sub 1	SU, loose or on skids	100
Sub 2	SU, in boxes or crates.....	92.5
Sub 3	KD, in packages.....	85
127120	Printing, NOI:	
Sub 1	On skids.....	100
Sub 2	In boxes or crates.....	85
127140	Presses, filter, NOI:	
Sub 1	SU.....	92.5
Sub 2	KD.....	70
127160	Presses, NOI:	
Sub 1	SU, loose or on skids	100
Sub 2	SU, in boxes or crates.....	92.5
Sub 3	KD, in packages.....	85
127180	Rubber Products Curing (Vulcanizers)	85
127190	Screen Printing (Screen Presses or Screen Printers):	
Sub 1	In packages other than boxes or crates.....	200
Sub 2	In boxes or crates.....	125

SUBJECT 4

Proposed Classification Provisions

Item	Description	Class
	MACHINERY GROUP: subject to item 114000	
127000	Presses:	⇒Cancel; no further application
127020	Baling , NOI, etc.....	⇒Cancel; see item NEW
127040	Fruit or Vegetable , NOI, etc.....	⇒Cancel; see item NEW
127042	NOTE—	⇒Cancel; no further application
127060	Hydraulic Wheel , etc.....	⇒Cancel; see item NEW
127080	Metal Drawing, Extruding, Forging, Piercing, Punching, Shearing or Stamping , etc.....	⇒Cancel; see item NEW
127120	Printing , NOI, etc.....	⇒Cancel; see item NEW
127140	Presses , filter, NOI, etc.....	⇒Cancel; see item NEW
127160	Presses , NOI, etc.....	⇒Cancel; see item NEW
127180	Rubber Products Curing (Vulcanizers)	⇒Cancel; see item NEW
127190	Screen Printing (Screen Presses or Screen Printers) , etc.....	⇒Cancel; see item NEW
⇒NEW	Presses , NOI:	
Sub 1	In boxes or crates, subject to Item 170 and having a density in pounds per cubic foot of:	
Sub 2	Less than 8.....	150
Sub 3	8 but less than 15.....	92.5
Sub 4	15 or greater.....	65
Sub 5	In packages other than boxes or crates, subject to Item 170 and having a density in pounds per cubic foot of:	
Sub 6	Less than 8.....	175
Sub 7	8 but less than 15.....	100
Sub 8	15 or greater.....	70

Analysis

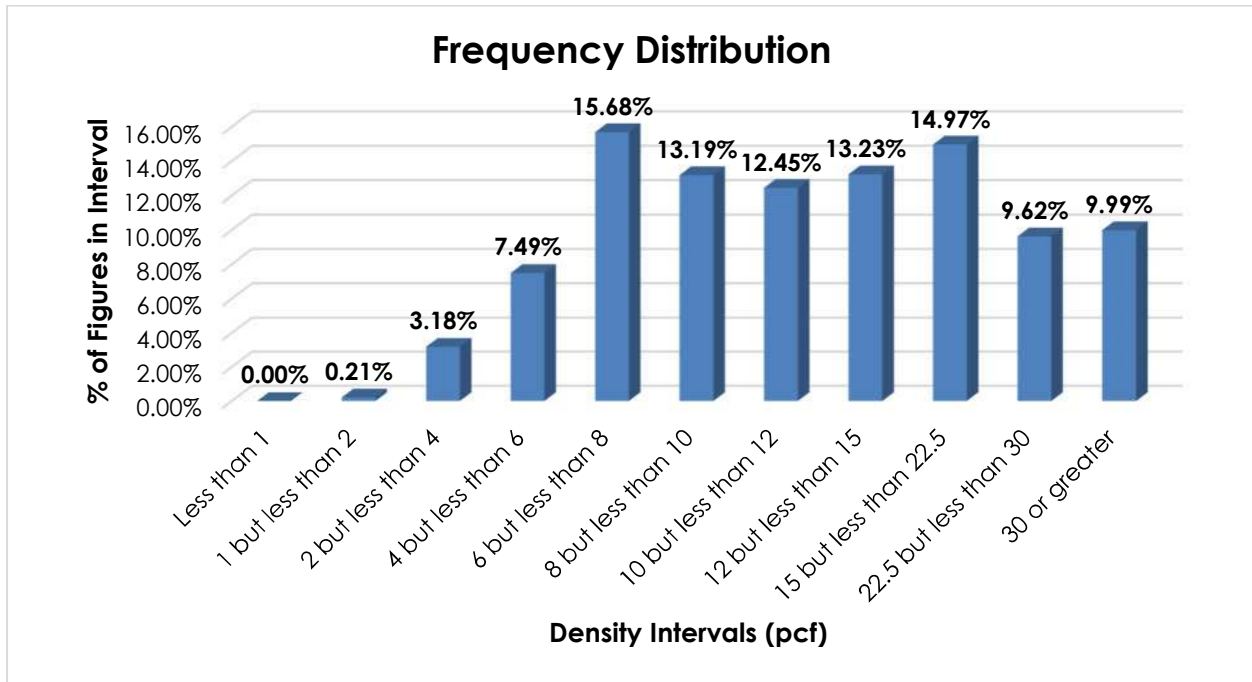
Introduction

This proposal is based on information developed during a review of the Presses subgeneric heading.

SUBJECT 4

Transportation Characteristics

Density—The information of record includes 8,773 density observations obtained from the FCDC’s Density Study¹. The densities range from 1.16 to 57.52 pcf, with an overall average density of 15.03 pcf. As shown in the graph below, the density distribution has clustering around distinct peaks in the 6 but less than 8 pcf and 15 but less than 22.5 pcf intervals. Density breaks at 8 and 15 pcf reflect the modality and spread of the distribution.



When the data is evaluated based on the proposed density breaks at 8 and 15 pcf, the density ranges and averages shown in the table below emerge.

Density Groups (pcf)	Density Range (pcf)	Average Density (pcf)
Less than 8	1.16 – 7.99	6.00
8 but less than 15	8.00 – 14.99	11.11
15 or greater	15.00 – 57.52	26.38

Handling—Presses may be shipped in boxes or crates, or in packages other than boxes or crates. Articles shipped in boxes or crates should not typically present unusual or significant handling considerations.

When tendered in packages that provide minimal exterior protection, additional care must be taken when handling the freight to avoid damaging the products.

¹ The Density Study is part of an ongoing effort by the FCDC to collect information on actual shipments across all product categories handled by the LTL industry. Carriers that choose to participate in the Study periodically submit shipment data captured through their respective freight auditing programs. The FCDC uses verifiable data points, identified by NMFC item, that include the weight and the dimensions and/or cube of the shipping unit.

SUBJECT 4

Stowability—When presses are tendered in boxes or crates, a flat load-bearing surface will typically be present, which can allow for loading other freight on top of the handling unit. There will typically be lateral support for adjacent freight as well.

When presses are tendered in packages other than boxes or crates, a regular load-bearing surface for top freight or lateral support for adjacent freight may not be present. This can result in increased time and effort for the carrier to properly structure the vehicle load to mitigate the chance of damage to the products.

Liability—As with most general commodities, when tendered for shipment fully enclosed within boxes or crates, presses should not be unusually susceptible to damage nor likely to damage other freight. However, when tendered in packages other than boxes or crates, presses exhibit greater susceptibility to damage.

Conclusion

Based on the foregoing analysis, and in the interest of clarification and simplification, items 127020, 127040, 127060, 127080, 127120, 127140, 127160, 127180 and 127190 would be canceled with reference to a new item, naming “Presses, NOI,” subject to the Machinery Group, with classes predicated on packaging and density, with breaks at 8 and 15 pcf². The table below relates the information of record to the proposed density groupings and FCDC guidelines for the proposed classes when tendered in boxes or crates, and a one-class adjustment from the density guidelines when the articles are tendered in packages other than boxes or crates to reflect the identified negative handling, stowability and liability characteristics.

Density Groups (pcf)	Average Density (pcf)	FCDC Minimum Average Density Guideline (pcf)	Class based on FCDC Density Guidelines	Class Adjustment Based on Handling, Stowability and Liability Considerations
Less than 8	6.00	6	150	175
8 but less than 15	11.11	10.5	92.5	100
15 or greater	26.38	22.5	65	70

Concurrently, Note, item 127042 will be canceled with no further application, as would the Presses subgeneric heading, item 127000.

² The density provisions would include reference to Item (Rule) 170, the inadvertence clause.

SUBJECT 5

Re: Household Utensils Group

Contact: Amber V. Parker Telephone — (703) 838-1810 parker@nmfta.org

Proponent: Freight Classification Development Council

Present Classification Provisions

Item	Description	Class
	HOUSEHOLD UTENSILS GROUP: subject to item 100500	
100540	Bottle Cappers , hand, in boxes or drums	85
100560	Bottle Openers , NOI, in boxes, subject to Item 170 and having a density in pounds per cubic foot of:	
Sub 1	Less than 12	125
Sub 2	12 or greater	70
100610	Can Openers , hand operated, in boxes	70
100760	Crushers , ice, electric or hand operated, in boxes.....	85
100940	Forks, Knives, Knife Blades or Spoons , in boxes:	
Sub 1	Gold- or silver-plated, other than on precious metals, see Note, item 100942.....	100
Sub 2	NOI, other than plastic, see Notes, items 100942 and 100944	85
Sub 3	Steel, galvanized, tinned, plain or plated other than gold- or silver-plated, see Note, item 100943.....	77.5
100942	NOTE—Forks, knives, knife blades or spoons, made of gold or other precious metal (other than sterling silver), or with parts of gold or other precious metal (other than sterling silver), such as backs or handles, but not including small silver ornaments, not taken.	
100943	NOTE—Also applies when inner containers contain not to exceed one tray or chest for each set of tableware.	
100944	NOTE—For provisions applicable to plastic forks, knives or spoons, see item 156600.	
101205	Nutcrackers or Nutpicks , steel, in boxes.....	70
101280	Potato Mashers , NOI, in boxes or drums	85
101400	Squeezers or Extractors (Hand Juicers, NOI) , in boxes.....	77.5

SUBJECT 5

Present Classification Provisions — Concluded

Item	Description	Class
	HOUSEHOLD UTENSILS GROUP: subject to item 100500	
101425	Tools , hand, kitchen, NOI, other than power, in boxes, subject to Item 170 and having a density in pounds per cubic foot of:	
Sub 1	Less than 1	400
Sub 2	1 but less than 2	300
Sub 3	2 but less than 4	250
Sub 4	4 but less than 6	175
Sub 5	6 but less than 8	125
Sub 6	8 but less than 10	100
Sub 7	10 but less than 12	92.5
Sub 8	12 but less than 15	85
Sub 9	15 but less than 22.5	70
Sub 10	22.5 but less than 30	65
Sub 11	30 or greater	60
	MACHINERY GROUP: subject to item 114000	
123150	Ice Crushing or Ice Shaving Machines , in boxes or crates, subject to Item 170 and having a density in pounds per cubic foot of:	
Sub 1	Less than 6	200
Sub 2	6 but less than 10	125
Sub 3	10 or greater	77.5

Proposed Classification Provisions

Item	Description	Class
	HOUSEHOLD UTENSILS GROUP: subject to item 100500	
100540	Bottle Cappers , hand, etc	⇒Cancel; see item 101425
100560	Bottle Openers , NOI, etc	⇒Cancel; see item 101425
100610	Can Openers , hand operated, etc	⇒Cancel; see item 101425
100760	Crushers , ice, electric or hand operated, etc	⇒Cancel; see item 123150
100940	Forks, Knives, Knife Blades or Spoons , etc	⇒Cancel; see item 101425
100942	NOTE—⇒Cancel; see item A-NEW.	
100943	NOTE—⇒Cancel; see item B-NEW.	
100944	NOTE—⇒Cancel; see item C-NEW.	
101205	Nutcrackers or Nutpicks , steel, etc	⇒Cancel; see item 101425
101280	Potato Mashers , NOI, etc	⇒Cancel; see item 101425

SUBJECT 5

Proposed Classification Provisions — Concluded

Item	Description	Class
	HOUSEHOLD UTENSILS GROUP: subject to item 100500	
101400	Squeezers or Extractors (Hand Juicers, NOI), etc	⇒Cancel; see item 101425
101425	⇒ Tools, hand, kitchen, other than power, viz.: ⇒ Bottle Cappers; ⇒ Bottle or Can Openers, NOI; ⇒ Forks, Knives, Knife Blades or Spoons, see Notes, items A-NEW, B-NEW and C-NEW; ⇒ Tools, hand, kitchen, other than power, NOI; ⇒ Nutcrackers and Nutpicks, NOI; ⇒ Potato Mashers, NOI; ⇒ Squeezers or Extractors (Hand Juicers, NOI); In boxes, subject to Item 170 and having a density in pounds per cubic foot of:	
Sub 1	Less than 1	400
Sub 2	1 but less than 2.....	300
Sub 3	2 but less than 4.....	250
Sub 4	4 but less than 6.....	175
Sub 5	6 but less than 8.....	125
Sub 6	8 but less than 10.....	100
Sub 7	10 but less than 12.....	92.5
Sub 8	12 but less than 15.....	85
Sub 9	15 but less than 22.5.....	70
Sub 10	22.5 but less than 30.....	65
Sub 11	30 or greater.....	60
⇒A-NEW	NOTE—Forks, knives, knife blades or spoons, made of gold or other precious metal (other than sterling silver), or with parts of gold or other precious metal (other than sterling silver), such as backs or handles, but not including small silver ornaments, not taken.	
⇒B-NEW	NOTE—Articles may be shipped with complement of trays or chests in same package.	
⇒C-NEW	NOTE—Does not apply on plastic dinnerware or tableware. For applicable provisions, see item 156600.	
	MACHINERY GROUP: subject to item 114000	
123150	Ice Crushing or Ice Shaving Machines, in boxes or crates, subject to Item 170 and having a density in pounds per cubic foot of:	
Sub 1	Less than 6.....	200
Sub 2	6 but less than 10	125
Sub 3	10 or greater	77.5

SUBJECT 5

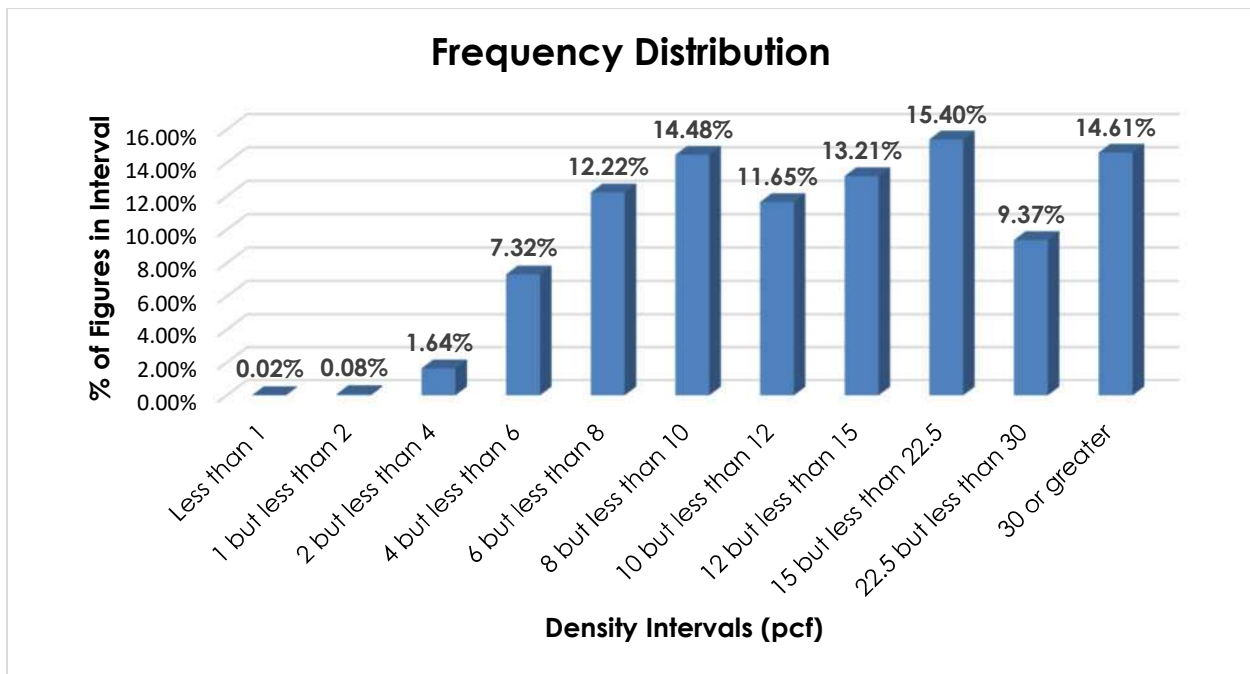
Analysis

Introduction

This proposal is based on a review of the Household Utensils Group. The transportation characteristics below relate to items 100540, 100560, 100610, 100940, 101205, 101280, 101400 and 101425, as shown in the Present Classification Provisions herein.

Transportation Characteristics

Density—The information of record includes 27,528 density observations obtained from the FCDC’s Density Study¹. The densities range from 0.05 to 63.64 pcf, with an overall average density of 16.84 pcf. As shown in the graph below, the densities are distributed throughout the range.



Handling, Stowability and Liability—There have been no reports of unusual or significant handling, stowability or liability issues.

¹ The Density Study is part of an ongoing effort by the FCDC to collect information on actual shipments across all product categories handled by the LTL industry. Carriers that choose to participate in the Study periodically submit shipment data captured through their respective freight auditing programs. The FCDC uses verifiable data points, identified by NMFC item, that include the weight and the dimensions and/or cube of the shipping unit.

SUBJECT 5**Conclusion**

Based on the foregoing analysis, items 100540, 100560, 100610, 100940, 101205, 101280, and 101400 would be canceled with reference to the full-scale, density-based provisions of item 101425². Additionally, the description of item 101425 would be amended to establish a "viz." format in the interest of clarification and simplification.

Moreover, in the interest of clarification and simplification, item 100760 would also be canceled with reference to item 123150.

Notes, items 100942, 100943 and 100944 would be canceled and reestablished as new attendant Notes to item 101425.

² Item 101425 provides the FCDC's standard 11-subprovision density scale, which includes reference to Item (Rule) 170, the inadvertence clause.

THIS PAGE INTENTIONALLY LEFT BLANK

SUBJECT 6

Re: Vehicle Parts

Contact: Angela L. Li Telephone — (703) 838-1882 angela.li@nmfta.org

Proponent: Freight Classification Development Council

Present Classification Provisions

Item	Description	Class
	VEHICLE PARTS: subject to item 190500	
190540	Assemblies , caliper brake, bicycle, see Note, item 190541, in boxes70	
190541	NOTE—Applies on assemblies consisting of calipers, brake pads or shoes, control levers and cables.	
190660	Backs or Guards , sled or wagon for children's vehicle:	
Sub 1	SU, not nested, in wrapped bundles or in boxes or crates.....200	
Sub 2	SU, nested or KD, other than KD flat, in boxes.....100	
Sub 3	KD flat, in boxes85	
190670	Belts , traction, snowmobile, rubber, reinforced with fabric, in boxes70	
190680	Bicycle Motor Wheels (Engines and Wheels combined) , in boxes or crates .150	
190700	Bicycle Motors , consisting of internal combustion engines and power transmission appliances, for attaching to bicycle frames, in boxes or crates100	
190740	Bicycle, Motorcycle or Motorcycle Sidecar Chassis Parts , NOI, other than plastic or plastic with metal components, in boxes or drums100	
	Bicycle, Motorcycle or Tricycle: subject to item 190760	
190780	Attachments , stabilizer or support, consisting of two rubber tired wheels and necessary accessories for mounting on bicycles, KD, in boxes70	
190790	Baskets , saddle, steel wire, KD flat, with necessary hardware for installation, in boxes70	
190800	Forks , iron or steel, in boxes, crates or drums65	
190880	Handle Bars, Bar Stems, Cranks or Seat Posts , in boxes or drums70	
190900	Hubs , with or without brake attachments, brake arms, sprockets or wrenches, in boxes70	
190920	Kickstands , iron or steel, in packages.....70	
190930	Mud Guards (Fenders), or Chain or Skirt Guards:	
Sub 1	Finished, in boxes or crates85	
Sub 2	Unfinished, in packages70	
190950	Pedals , in boxes or drums.....70	
191130	Wheel Spokes or Nipples , separate or combined, steel, in boxes60	
191140	Blocks or Linings , brake, sintered iron, freight truck, tractor or trailer, see Note, item 191142, in boxes60	
191142	NOTE—Applies only when consisting of steel plates with a facing composition consisting of not less than 75 percent of sintered iron and the remainder of graphite and other materials.	

SUBJECT 6

Present Classification Provisions — Continued

Item	Description	Class
	VEHICLE PARTS: subject to item 190500	
191420	Brackets , automobile body mounting, see Note, item 191422, 3/16 inch or thicker steel, in boxes or stacked with wooden separators in packages60	60
191422	NOTE—Applies only on brackets for mounting automobile bodies on assembly line trucks.	
191560	Children's Vehicle Parts , NOI, wooden, in panels, in the white, in packages..70	70
191600	Cushions , vehicle seat or seat back, NOI, other than foam rubber or cellular, expanded or foam plastic, see Note, item 191602, in bales, boxes or crates..... 125	125
191602	NOTE—Applies only on vehicle seat or seat back cushions which are integral parts of the vehicle seats.	
191640	Dollies , house trailer, NOI.....85	85
191700	Felloes or Wheel Rims , wooden, NOI, in the white, in packages 60	60
191820	Freight Trailer Parts , NOI, see Note, item 191822, iron or steel, cast or forged, or plate or sheet not thinner than 12 gauge, in packages..... 60	60
191822	NOTE—Applies only on nonadjustable or fixed position articles with no moving parts having the purpose of suspension, support or reinforcement, but not on running or driving gear assemblies nor on frames or frame assemblies or sub-frame assemblies nor on spring suspension assemblies, nor on bodies or body parts.	
191840	Gates , freight vehicle, iron or steel chain, in boxes.....70	70
191860	Gear Frames , freight trailer, steel85	85
191930	Gears , children's vehicle, in packages:	
Sub 1	SU, wheels off or without wheels200	200
Sub 2	KD.....70	70
192030	Hitches or Couplers, NOI, or Parts thereof , NOI, not wheeled, with or without stabilizers, in packages, subject to Item 170 and having a density in pounds per cubic foot of:	
Sub 1	Less than 1 400	400
Sub 2	1 but less than 2 300	300
Sub 3	2 but less than 4250	250
Sub 4	4 but less than 6 175	175
Sub 5	6 but less than 8 125	125
Sub 6	8 but less than 10 100	100
Sub 7	10 but less than 1292.5	92.5
Sub 8	12 but less than 15 85	85
Sub 9	15 but less than 22.570	70
Sub 10	22.5 but less than 30 65	65
Sub 11	30 or greater 60	60
192050	Hoppers or Trays , fertilizer cart or wheelbarrow:	
Sub 1	Not nested..... 125	125
Sub 2	Nested, in packages85	85

SUBJECT 6

Present Classification Provisions — Continued

Item	Description	Class
	VEHICLE PARTS: subject to item 190500	
192180	License Plates , vehicle, in boxes:	
Sub 1	Iron or steel.....	70
Sub 2	Other than iron or steel.....	85
192210	Lift Truck Attachments:	
Sub 1	Fork arms, fingers or tines, steel.....	65
Sub 2	NOI, steel or steel and rubber, in boxes or on skids, see Note, item 192212.....	70
192212	NOTE—Applies only on attachments designed to facilitate materials handling. Attachments may be equipped with hydraulic cylinders.	
192215	Linings or Blocks , vehicle wheel brake, composition, NOI, other than flexible, in boxes.....	65
192230	Motor Truck or Tractor Trailer Couplers , including Fifth Wheels, or Parts thereof , NOI, or Freight Trailer Standards or Supports, or Parts thereof , NOI, iron or steel, or iron or steel and cast aluminum combined, see Note, item 192232, in packages.....	70
192232	NOTE—Applies only when cast aluminum content does not exceed 25 percent of the weight on which freight charges are assessed.	
192280	Motorcycle Sidecars , in boxes or crates:	
Sub 1	SU.....	250
Sub 2	KD.....	150
192300	Motorcycle Wheel Rims:	
Sub 1	Unfinished, in packages.....	100
Sub 2	Finished, in boxes or crates.....	150
192360	Pads , pedal or step, rubber or rubber and steel combined, NOI, in bags, boxes or drums.....	85
192380	Pads , pedal, bicycle or children's vehicle, rubber or plastic, cut or not cut, without metal fittings, in bags, boxes, bundles or drums.....	55
192390	Parts , motor truck or tractor trailer coupler, iron or steel, cast or forged, or plate or sheet not thinner than 12 gauge, in the rough, see Note, item 192391, in crates.....	50
192391	NOTE—Applies only when not assembled and as from the mold, forge, press or stamp, except that they may be rough turned to 1/8 inch of finished size, fins, gates and sinker heads may be removed, articles may be cleaned or tumbled, bolt holes may be made but not threaded, castings may be annealed, and articles may be primed, leaded or tarred with one coat only to prevent rust.	
192550	Racks , hay or stock:	
Sub 1	SU, loose.....	200
Sub 2	KD, in packages.....	85
192590	Rims , bicycle wheel, aluminum, steel or wood, see Note, item 192591:	
Sub 1	Interleaved or interlaced, in packages.....	100
Sub 2	Other than interleaved or interlaced, in boxes or crates.....	150

SUBJECT 6

Present Classification Provisions — Concluded

Item	Description	Class
	VEHICLE PARTS: subject to item 190500	
192591	NOTE—Applies only on bicycle wheel rims constituting the circular outer part of the wheel on which the tire will be mounted. Does not apply on complete bicycle wheels, or rims shipped with spokes or hubs attached.	
192620	Runners , sled or sleigh, steel, loose or in packages	70
192680	Seat Backs , wooden, in the white:	
Sub 1	Bent, nested, in packages	85
Sub 2	Bent, not nested, in packages	100
Sub 3	Not bent, with or without pan head nuts, strapped to pallets	70
192730	Seats , troop, wood with iron or steel hardware, in crates.....	70
192870	Spring Bolsters , in packages.....	70
192910	Tires , NOI, steel.....	70
192950	Tongue Supports , not wheeled, in packages	70
193050	Truck Steps , KD or collapsed	85

Proposed Classification Provisions

Item	Description	Class
	VEHICLE PARTS: subject to item 190500	
190540	Assemblies , caliper brake, bicycle, etc	⇒Cancel; see item NEW
190541	NOTE—Cancel; no further application.	
190660	Backs or Guards , sled or wagon for children's vehicle, etc.....	⇒Cancel; see item NEW
190670	Belts , traction, snowmobile, rubber, reinforced with fabric, etc	⇒Cancel; see item NEW
190680	Bicycle Motor Wheels (Engines and Wheels combined) , etc	⇒Cancel; see item NEW
190700	Bicycle Motors , consisting of internal combustion engines and power transmission appliances, etc.....	⇒Cancel; see item NEW
190740	Bicycle, Motorcycle or Motorcycle Sidecar Chassis Parts , NOI, other than plastic or plastic with metal components, etc	⇒Cancel; see item NEW
	Bicycle, Motorcycle or Tricycle: subject to item 190760	
190780	Attachments , stabilizer or support, consisting of two rubber tired wheels and necessary accessories for mounting on bicycles, etc.....	⇒Cancel; see item NEW
190790	Baskets , saddle, steel wire, etc	⇒Cancel; see item NEW
190800	Forks , iron or steel, etc.....	⇒Cancel; see item NEW

SUBJECT 6

Proposed Classification Provisions — Continued

Item	Description	Class
	VEHICLE PARTS: subject to item 190500	
	Bicycle, Motorcycle or Tricycle: subject to item 190760	
190880	Handle Bars, Bar Stems, Cranks or Seat Posts, etc.....	⇒Cancel; see item NEW
190900	Hubs, with or without brake attachments, brake arms, sprockets or wrenches, etc	⇒Cancel; see item NEW
190920	Kickstands, iron or steel, etc	⇒Cancel; see item NEW
190930	Mud Guards (Fenders), or Chain or Skirt Guards, etc	⇒Cancel; see item NEW
190950	Pedals, etc	⇒Cancel; see item NEW
191130	Wheel Spokes or Nipples, separate or combined, steel, etc	⇒Cancel; see item NEW
191140	Blocks or Linings, brake, sintered iron, freight truck, etc	⇒Cancel; see item NEW
191142	NOTE—Cancel; no further application.	
191420	Brackets, automobile body mounting, etc.....	⇒Cancel; see item NEW
191422	NOTE—Cancel; no further application.	
191560	Children's Vehicle Parts, NOI, wooden, in panels, in the white, etc	⇒Cancel; see item NEW
191600	Cushions, vehicle seat or seat back, NOI, etc.....	⇒Cancel; see item NEW
191602	NOTE—Cancel; no further application.	
191640	Dollies, house trailer, NOI.....	⇒Cancel; see item NEW
191700	Felloes or Wheel Rims, wooden, NOI, in the white, etc	⇒Cancel; see item NEW
191820	Freight Trailer Parts, NOI, see Note, item 191822, iron or steel, etc...	⇒Cancel; see item NEW
191822	NOTE—Cancel; no further application.	
191840	Gates, freight vehicle, iron or steel chain, etc	⇒Cancel; see item NEW
191860	Gear Frames, freight trailer, steel	⇒Cancel; see item NEW
191930	Gears, children's vehicle, etc	⇒Cancel; see item NEW
192030	Hitches or Couplers, NOI, or Parts thereof, NOI, not wheeled, with or without stabilizers, etc	⇒Cancel; see item NEW
192050	Hoppers or Trays, fertilizer cart or wheelbarrow, etc.....	⇒Cancel; see item NEW

SUBJECT 6

Proposed Classification Provisions — Continued

Item	Description	Class
	VEHICLE PARTS: subject to item 190500	
192180	License Plates , vehicle, etc	⇒Cancel; see item NEW
192210	Lift Truck Attachments , etc	⇒Cancel; see item NEW
192212	NOTE—Cancel; no further application.	
192215	Linings or Blocks , vehicle wheel brake, composition, NOI, etc.....	⇒Cancel; see item NEW
192230	Motor Truck or Tractor Trailer Couplers , including Fifth Wheels, or Parts thereof, NOI, or Freight Trailer Standards or Supports, or Parts thereof , NOI, iron or steel, etc.....	⇒Cancel; see item NEW
192232	NOTE— Cancel; no further application.	
192280	Motorcycle Sidecars , etc	⇒Cancel; see item NEW
192300	Motorcycle Wheel Rims , etc.....	⇒Cancel; see item NEW
192360	Pads , pedal or step, rubber or rubber and steel combined, etc.....	⇒Cancel; see item NEW
192380	Pads , pedal, bicycle or children's vehicle, rubber or plastic, etc	⇒Cancel; see item NEW
192390	Parts , motor truck or tractor trailer coupler, iron or steel, etc	⇒Cancel; see item NEW
192391	NOTE—Cancel; no further application.	
192550	Racks , hay or stock, etc.....	⇒Cancel; see item NEW
192590	Rims , bicycle wheel, aluminum, steel or wood, etc.....	⇒Cancel; see item NEW
192591	NOTE—Cancel; no further application.	
192620	Runners , sled or sleigh, steel, etc.....	⇒Cancel; see item NEW
192680	Seat Backs , wooden, in the white, etc.....	⇒Cancel; see item NEW
192730	Seats , troop, wood with iron or steel hardware, etc	⇒Cancel; see item NEW
192870	Spring Bolsters , etc	⇒Cancel; see item NEW
192910	Tires , NOI, steel.....	⇒Cancel; see item NEW
192950	Tongue Supports , not wheeled, etc.....	⇒Cancel; see item NEW
193050	Truck Steps , etc	⇒Cancel; see item NEW

SUBJECT 6

Proposed Classification Provisions — Concluded

Item	Description	Class
	VEHICLE PARTS: subject to item 190500	
⇒NEW	Vehicle Parts, viz.: Bicycle Parts, Attachments or Accessories; Freight Trailer Parts, NOI; Hitches or Couplers, or Parts thereof, NOI; Lift Truck Attachments, NOI; Vehicle Parts, NOI; In boxes or crates, subject to Item 170 and having a density in pounds per cubic foot of:	
Sub 1	Less than 1	400
Sub 2	1 but less than 2.....	300
Sub 3	2 but less than 4.....	250
Sub 4	4 but less than 6.....	175
Sub 5	6 but less than 8.....	125
Sub 6	8 but less than 10.....	100
Sub 7	10 but less than 12.....	92.5
Sub 8	12 but less than 15.....	85
Sub 9	15 but less than 22.5.....	70
Sub 10	22.5 but less than 30.....	65
Sub 11	30 or greater.....	60

Analysis

Introduction

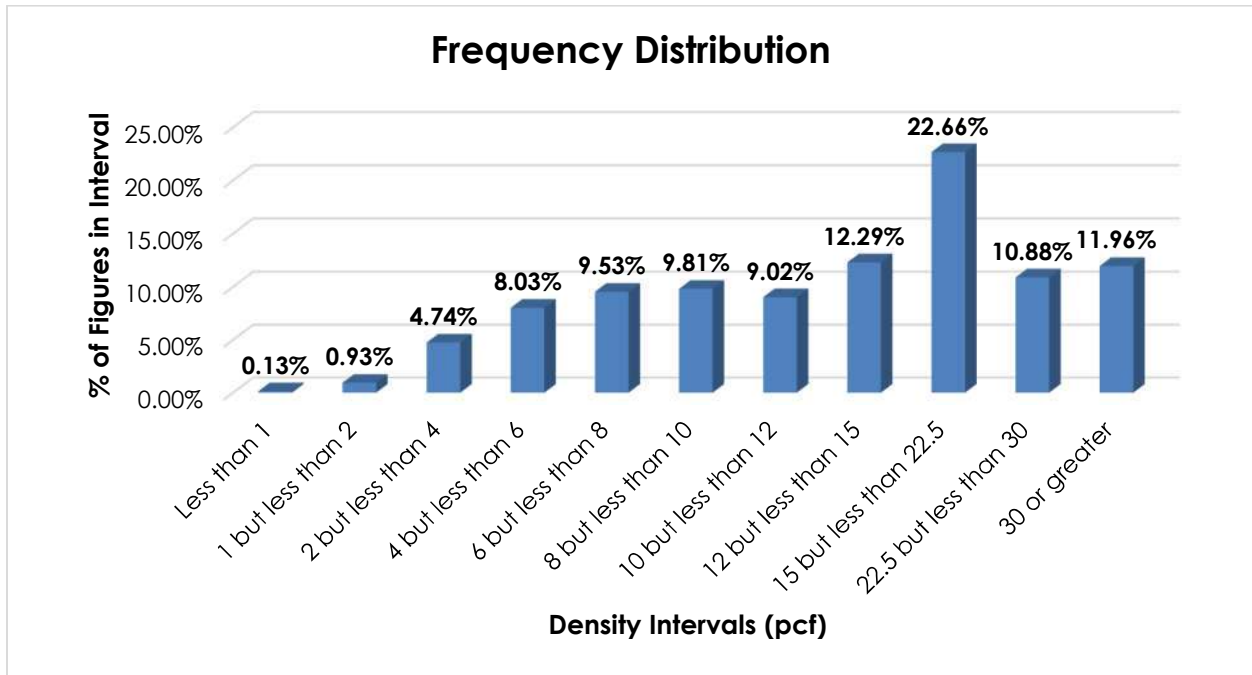
Numerous items in the Vehicle Parts Group name particular types of vehicle parts, and these provisions can be difficult to interpret, apply or verify. The transportation characteristics below relate to the items subject to the Vehicle Parts Group, as shown in the Present Classification Provisions herein.

Transportation Characteristics

Density—The information of record includes 121,317 density observations obtained from the FCDC’s Density Study¹. The densities range from 0.26 to 61.87 pcf, with an overall average density of 16.50 pcf. As shown in the graph on the following page, the densities are widely distributed throughout the range.

¹ The Density Study is part of an ongoing effort by the FCDC to collect information on actual shipments across all product categories handled by the LTL industry. Carriers that choose to participate in the Study periodically submit shipment data captured through their respective freight auditing programs. The FCDC uses verifiable data points, identified by NMFC item, that include the weight and the dimensions and/or cube of the shipping unit.

SUBJECT 6



Handling, Stowability and Liability—There have been no reports of unusual or significant handling, stowability or liability issues.

Conclusion

Based on the foregoing analysis, and in the interest of clarification and simplification, numerous items, as shown in the Proposed Classification Provisions herein, would be canceled with reference to a new item, naming “Vehicle Parts,” with a “viz.” format, and classes predicated on the FCDC’s standard 11-subprovision density scale².

Numerous Notes would be canceled as having no further application.

The FCDC’s Packaging Development Manager has reviewed the proposed minimum packaging requirements and determined that they are appropriate for the LTL environment.

² The FCDC’s standard 11-subprovision density scale includes reference to Item (Rule) 170, the inadvertence clause.

SUBJECT 7

Re: Torches or Welders, or Parts thereof

Contact: Lanae C. Peterson Telephone — (703) 838-1810 peterson@nmfta.org

Proponent: Freight Classification Development Council

Present Classification Provisions

Item	Description	Class
	MACHINERY GROUP: subject to item 114000	
133050	Welders, NOI, or Parts thereof, NOI, see Note, item 133052:	
Sub 1	Inertia friction type:	
Sub 2	SU, loose, or mounted on or shipped with freight trailers	100
Sub 3	In boxes or crates, or on skids, or mounted on hand trucks or in cabinets or permanently affixed skids.....	77.5
Sub 4	Electric:	
Sub 5	SU, loose, or mounted on or shipped with freight trailers	100
Sub 6	In boxes or crates, or on skids, or in cabinets or permanently affixed skids.....	70
133052	NOTE—Will also apply on the following articles shipped in boxes with the welders: Masks, lenses, aprons, gloves, sleeves, hand tools, wire brushes, electric tools, abrasive wheels, cord sets, vises, electrode holders, cable, ground clamps, arc torches, welding carbons, welding bars, rods or wire, soapstone, oilers, steel tape measures, steel boxes, funnels or fire extinguishers, hand type. Total weight of such articles must not exceed 600 pounds for each welder shipped.	
	TOOLS, OR PARTS NAMED: subject to item 183550	
186680	Torches , braze-welding, hand held, with oxygen generator and oxygen generating chemical pellets; with propane fuel in disposable container of not more than one quart capacity, see Note, item 186682; or in boxes	85
186682	NOTE—Also applies on the following articles shipped in same box with braze- welding torch: tips, brazing rods, plastic eye shield and sparking ignitor.	
186690	Torches , cutting or welding, NOI, with or without equipment of tips, in boxes.....	150
186710	Torches , hand, other than blow, cutting or welding, see Note, item 186711, in boxes:	
Sub 1	With not to exceed complement of fuel in disposable container of not over 1 quart capacity	77.5
Sub 2	Without fuel	85
Sub 3	Parts, viz.: Burners, Tips or Valves	85
186711	NOTE—Also applies on torches which are used in roofing or for weed burning, stump burning, thawing, drying or snow melting.	

SUBJECT 7

Present Classification Provisions — Concluded

Item	Description	Class
	TOOLS, OR PARTS NAMED: subject to item 183550	
186720	Torches , oxygen, cutting or welding, hand held, with not more than 1.1 cubic feet (40.1 grams) of oxygen in disposable container, see Notes, items 186721 and 186722.....	100
186721	NOTE—Applies only on oxygen torch consisting of burner tip or head with built-in control valve and oxygen gauge, designed for attaching directly to disposable oxygen and fuel containers.	
186722	NOTE—Also applies on the following articles when shipped in same box with oxygen torch: brazing and welding rods, protective welding goggles, sparking igniter and instruction book.	

Proposed Classification Provisions

Item	Description	Class
	MACHINERY GROUP: subject to item 114000	
133050	Welders, NOI, or Parts thereof , NOI, etc.....	⇒Cancel; see item A-NEW
133052	NOTE—⇒Cancel; no further application	
	TOOLS, OR PARTS NAMED: subject to item 183550	
186680	Torches , braze-welding, hand held, with oxygen generator and oxygen generating chemical pellets; with propane fuel in disposable container of not more than one quart capacity, etc	⇒Cancel; see item A-NEW
186682	NOTE—⇒Cancel; no further application.	
186690	Torches , cutting or welding, NOI, etc	⇒Cancel; see item A-NEW
186710	Torches , hand, other than blow, cutting or welding, etc	⇒Cancel; see item A-NEW
186711	NOTE—⇒Cancel; no further application.	
186720	Torches , oxygen, cutting or welding, hand held, with not more than 1.1 cubic feet (40.1 grams) of oxygen in disposable container, etc	⇒Cancel; see item A-NEW
186721	NOTE—⇒Cancel; no further application.	
186722	NOTE—⇒Cancel; no further application.	

SUBJECT 7

Proposed Classification Provisions — Concluded

Item	Description	Class
⇒A-NEW	Torches or Welders, or Parts thereof , NOI, not required by the U.S. Department of Transportation to bear a Hazard Class or Hazard Division label or placard, see Notes, items B-NEW, C-NEW, and D-NEW, in packages, subject to Item 170 and having a density in pounds per cubic foot of:	
Sub 1	Less than 1	400
Sub 2	1 but less than 2	300
Sub 3	2 but less than 4	250
Sub 4	4 but less than 6	175
Sub 5	6 but less than 8	125
Sub 6	8 but less than 10	100
Sub 7	10 but less than 12	92.5
Sub 8	12 but less than 15	85
Sub 9	15 but less than 22.5	70
Sub 10	22.5 but less than 30	65
Sub 11	30 or greater	60
⇒B-NEW	NOTE—Also applies on accompanying complement of accessories shipped in same package.	
⇒C-NEW	NOTE—Does not apply on torches used for lamps or lighting. For applicable provisions, see item 109950.	
⇒D-NEW	NOTE—Does not apply on materials regulated by the U.S. Department of Transportation as hazardous and required to bear a Hazard Class or Hazard Division label or placard. For classes applicable to such hazardous materials, see provisions elsewhere in this Classification.	

Analysis

Introduction

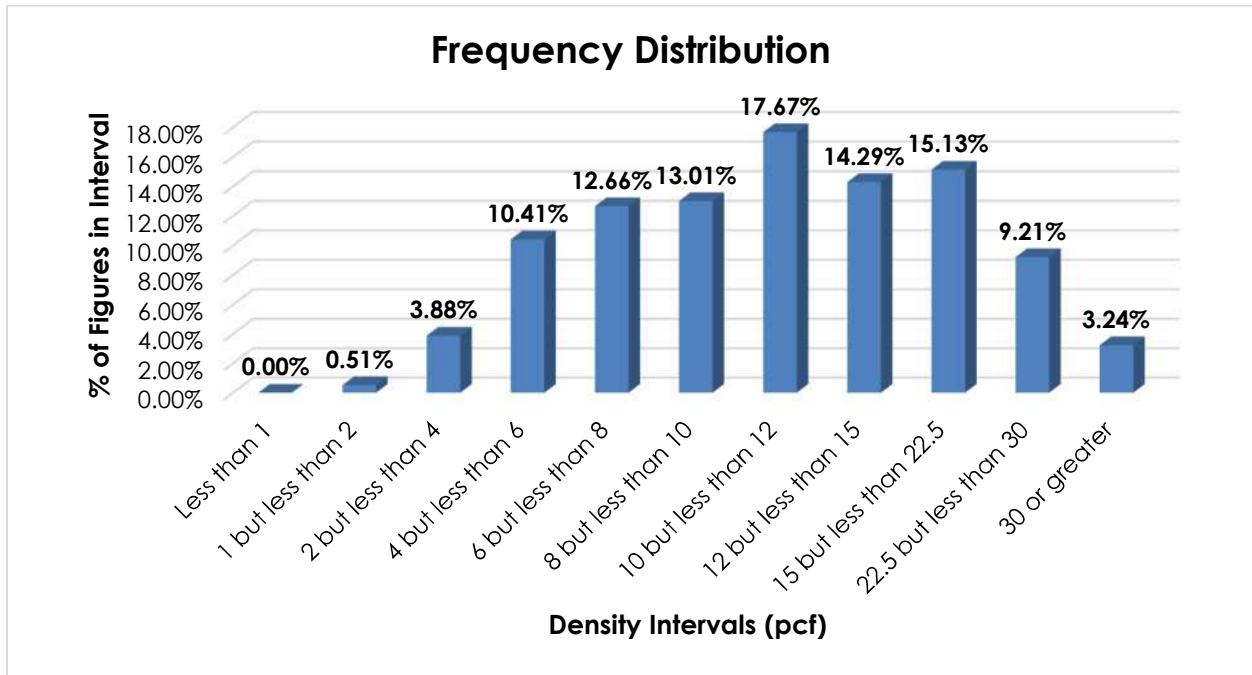
This proposal responds to the summation of Research Project 1528, which sought to review the transportation characteristics of torches or welders, as embraced by items 133050, 186680, 186690, 186710 and 186720.

Transportation Characteristics

Density—The information of record includes 23,759 density observations obtained from the FCDC’s Density Study¹. The densities range from 1.02 to 44.18 pcf, with an overall average density of 12.89 pcf. As shown in the graph on the following page, the densities are widely distributed throughout the range.

¹ The Density Study is part of an ongoing effort by the FCDC to collect information on actual shipments across all product categories handled by the LTL industry. Carriers that choose to participate in the Study periodically submit shipment data captured through their respective freight auditing programs. The FCDC uses verifiable data points, identified by NMFC item, that include the weight and the dimensions and/or cube of the shipping unit.

SUBJECT 7



Handling, Stowability and Liability—There have been no reports of unusual or significant handling, stowability or liability issues.

Conclusion

Based on the foregoing analysis, this proposal would cancel items 133050, 186680, 186690, 186710, and 186720 with reference to a new item, naming "Torches or Welders, or Parts thereof, NOI." The new item would be restricted to products not regulated as hazardous by the U.S. Department of Transportation and would provide classes predicated on the FCDC's standard 11-subprovision density scale².

Additionally, three new attendant Notes would be established to clarify the application of the new item.

The FCDC's Packaging Development Manager has reviewed the proposed minimum packaging requirements and determined that they are appropriate for the LTL environment.

Notes, items 133052, 186682, 186711, 186721, and 186722 would be canceled as having no further application.

² The FCDC's standard 11-subprovision density scale includes reference to Item (Rule) 170, the inadvertence clause.

SUBJECT 8

Re: Pools or Parts thereof; or Pool Kits

Contact: Lanae C. Peterson Telephone — (703) 838-1810 peterson@nmfta.org

Proponent: Freight Classification Development Council

Present Classification Provisions

Item	Description	Class
	ATHLETIC GOODS GROUP: subject to item 15500	
15520	Athletic or Sporting Goods, viz.: Athletic or Sporting Goods or Equipment , NOI; Pools or Pool Kits , swimming or wading, above-ground or semi-inground, see Note, item 15527; or Parts thereof , NOI; [Other Articles Listed—Not Involved.] In boxes or crates, see Note, item 15522, subject to Item 170 and having a density in pounds per cubic foot of:	
Sub 1	Less than 1	400
Sub 2	1 but less than 2.....	300
Sub 3	2 but less than 4.....	250
Sub 4	4 but less than 6.....	175
Sub 5	6 but less than 8.....	125
Sub 6	8 but less than 10.....	100
Sub 7	10 but less than 12.....	92.5
Sub 8	12 but less than 15.....	85
Sub 9	15 but less than 22.5.....	70
Sub 10	22.5 but less than 30.....	65
Sub 11	30 or greater.....	60
15522	NOTE—Not Involved.	
15523	NOTE—Not Involved.	
15524	NOTE—Not Involved.	
15525	NOTE—Not Involved.	
15526	NOTE—Not Involved.	
15527	NOTE—Also applies on accompanying complement of accessories or equipment.	
15528	NOTE—Not Involved.	
	BUILDING MATERIALS, MISCELLANEOUS, GROUP: subject to item 33570	
35032	Materials or Panels , in-ground swimming pool construction, see Notes, items 35033 and 35034, in packages	125
35033	NOTE—Applies on wall panels for the construction of in-ground swimming pools, with or without installation hardware and with or without one or more of the following: full or partial liners; coping; or bracing.	
35034	NOTE—Also applies on hardware necessary for installation. May also include articles such as filters, pumps, skimmers, fittings and ladders not to exceed ten percent of the total weight on which charges are assessed.	

SUBJECT 8

Proposed Classification Provisions

Item	Description	Class
	ATHLETIC GOODS GROUP: subject to item 15500	
15520	Athletic or Sporting Goods, viz.: Athletic or Sporting Goods or Equipment , NOI; ⇒ Pools or Parts thereof , swimming or wading, NOI; or Pool Kits , swimming or wading, NOI, see Note, item 15527; ⇒Pools or Pool Kits, swimming or wading, above ground or semi-inground, see Note, item 15527; or Parts thereof , NOI; [Other Articles Listed—No Change.] In boxes or crates, see Note, item 15522, subject to Item 170 and having a density in pounds per cubic foot of:	
Sub 1	Less than 1	400
Sub 2	1 but less than 2.....	300
Sub 3	2 but less than 4.....	250
Sub 4	4 but less than 6.....	175
Sub 5	6 but less than 8.....	125
Sub 6	8 but less than 10.....	100
Sub 7	10 but less than 12.....	92.5
Sub 8	12 but less than 15.....	85
Sub 9	15 but less than 22.5.....	70
Sub 10	22.5 but less than 30.....	65
Sub 11	30 or greater.....	60
15522	NOTE—No Change.	
15523	NOTE—No Change.	
15524	NOTE—No Change.	
15525	NOTE—No Change.	
15526	NOTE—No Change.	
15527	NOTE—⇒Pool Kits refer to accompanying complement of accessories or equipment as stated on the Bill of Lading.	
15528	NOTE—No Change.	
	BUILDING MATERIALS, MISCELLANEOUS, GROUP: subject to item 33570	
35032	Materials or Panels , in-ground swimming pool construction, etc ⇒Cancel; see item 15520	
35033	NOTE—⇒Cancel; no further application.	
35034	NOTE—⇒Cancel; no further application.	

Analysis

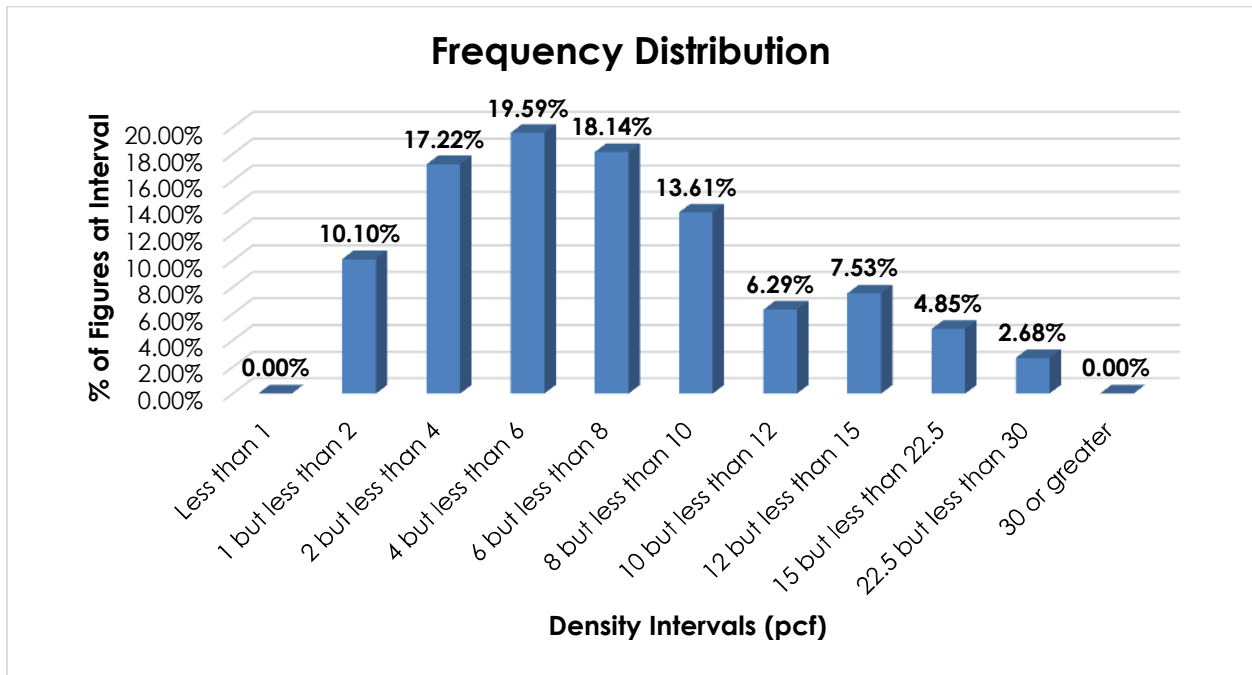
Introduction

This proposal responds to the summation of Research Project 1523, which sought to review the transportation characteristics of materials or panels for in-ground swimming pool construction, as named in item 35032.

SUBJECT 8

Transportation Characteristics

Density—The information of record includes 970 density observations obtained from the FCDC’s Density Study¹. The densities range from 1.03 to 28.89 pcf, with an overall average density of 7.32 pcf. As shown in the graph below, the densities are widely distributed throughout the range.



Handling, Stowability and Liability—There have been no reports of unusual or significant handling, stowability or liability issues.

Conclusion

Based on the foregoing analysis, item 35032 would be canceled with reference to the full-scale, density-based provisions of item 15520².

Concurrently, in the interest of clarification and simplification, this proposal would amend the “viz.” listing in item 15520 to read, “Pools or Parts thereof, swimming or wading, NOI; or Pool Kits, swimming or wading, NOI.”

Note, item 15527 would be amended for clarification.

¹ The Density Study is part of an ongoing effort by the FCDC to collect information on actual shipments across all product categories handled by the LTL industry. Carriers that choose to participate in the Study periodically submit shipment data captured through their respective freight auditing programs. The FCDC uses verifiable data points, identified by NMFC item, that include the weight and the dimensions and/or cube of the shipping unit.

² Item 15520 provides the FCDC’s standard 11-subprovision density scale, which includes reference to Item (Rule) 170, the inadvertence clause.

THIS PAGE INTENTIONALLY LEFT BLANK

SUBJECT 9

Re: Water Coolers or Beverage Dispensers

Contact: Angela L. Li Telephone — (703) 838-1882 angela.li@nmfta.org

Proponent: Freight Classification Development Council

Present Classification Provisions

Item	Description	Class
	COOLERS GROUP: subject to item 53000	
53025	Coolers, Iceboxes or Refrigerators , NOI, without mechanical cooling or freezing apparatus, see Note, item 53026, in boxes, crates or Package 107, subject to Item 170 and having a density in pounds per cubic foot of:	
Sub 1	Less than 1	400
Sub 2	1 but less than 2	300
Sub 3	2 but less than 4	250
Sub 4	4 but less than 6	175
Sub 5	6 but less than 8	125
Sub 6	8 but less than 10	100
Sub 7	10 but less than 12	92.5
Sub 8	12 but less than 15	85
Sub 9	15 but less than 22.5	70
Sub 10	22.5 but less than 30	65
Sub 11	30 or greater	60
53026	NOTE—Also applies on Cooling or Freezing Rooms, or Cooling or Freezing Room Panels or Wall Sections , without mechanical cooling or freezing apparatus.	
53190	Water Coolers , NOI, with plastic or metal walls, insulated, with or without plastic liner, in boxes.....	125
53220	Water Coolers and Cooling or Freezing Apparatus combined , in boxes, crates or Package 1132; also on skids for pieces weighing 3,000 pounds or over.....	85
63825	Exhibits , museum, Articles of Antiquity or Antiques , see Note, item 63826	0
63826	NOTE—Does not apply on numismatic exhibits as named in item 63830; paintings or pictures subject to items 56165 or 100240; antique furniture subject to item 100240; nor antique china or glassware subject to items 47500, 88160 or 100240.	

SUBJECT 9

Present Classification Provisions — Concluded

Item	Description	Class
	MACHINERY GROUP: subject to item 114000	
119610	Dispensers , carbonated beverage (Soda Fountains), see Note, item 119611:	
Sub 1	In boxes, crates, containers with integral lift truck skids or pallets, or Packages 107 or 1056, subject to Item 170 and having a density in pounds per cubic foot of:	
Sub 2	Less than 5	250
Sub 3	5 but less than 10	125
Sub 4	10 or greater.....	70
Sub 5	In packages other than as set forth in sub 1, subject to Item 170 and having a density in pounds per cubic foot of:	
Sub 6	Less than 5	300
Sub 7	5 but less than 10	150
Sub 8	10 or greater.....	77.5
119611	NOTE—Applies on beverage dispensers that combine syrup, carbon dioxide and water to make carbonated soft drinks.	
119620	Dispensers or Urns , beverage or syrup, NOI, with faucets or pumps, with or without agitators or stands, in boxes or crates, see Note, item 119621:	
Sub 1	Mechanically self-refrigerated	92.5
Sub 2	Other than mechanically self-refrigerated:	
Sub 3	Plastic	250
Sub 4	Other	125
119621	NOTE—Bowls or urns for containing the beverage, or covers therefor, may be in separate boxes.	

THIS SPACE INTENTIONALLY LEFT BLANK

SUBJECT 9

Proposed Classification Provisions

Item	Description	Class
	COOLERS GROUP: subject to item 53000	
53025	Coolers, Iceboxes or Refrigerators , NOI, without mechanical cooling or freezing apparatus, see Note, item 53026, in boxes, crates or Package 107, subject to Item 170 and having a density in pounds per cubic foot of:	
Sub 1	Less than 1	400
Sub 2	1 but less than 2	300
Sub 3	2 but less than 4	250
Sub 4	4 but less than 6	175
Sub 5	6 but less than 8	125
Sub 6	8 but less than 10	100
Sub 7	10 but less than 12	92.5
Sub 8	12 but less than 15	85
Sub 9	15 but less than 22.5	70
Sub 10	22.5 but less than 30	65
Sub 11	30 or greater	60
53026	NOTE—No Change.	
53190	Water Coolers , NOI, with plastic or metal walls, insulated, with or without plastic liner, etc	⇒Cancel; see item 53025
53220	Water Coolers and Cooling or Freezing Apparatus combined , etc	⇒Cancel; see item NEW
63825	Exhibits , museum, Articles of Antiquity or Antiques , see Note, item 63826	0
63826	NOTE—No Change.	
	MACHINERY GROUP: subject to item 114000	
119610	Dispensers , carbonated beverage (Soda Fountains).....	⇒Cancel; see item NEW
119611	NOTE—⇒Cancel; no further application.	
119620	Dispensers or Urns , beverage or syrup, NOI, with faucets or pumps, with or without agitators or stands, etc	⇒Cancel; see items 63825, NEW and provisions otherwise applicable
119621	NOTE—⇒Cancel; no further application.	
⇒NEW	Coolers or Dispensers , beverage or water, with mechanical apparatus, in boxes, crates or Packages 107, 1132 or 2457, subject to Item 170 and having a density in pounds per cubic foot of:	
Sub 1	Less than 7	175
Sub 2	7 but less than 12	110
Sub 3	12 or greater	70

SUBJECT 9

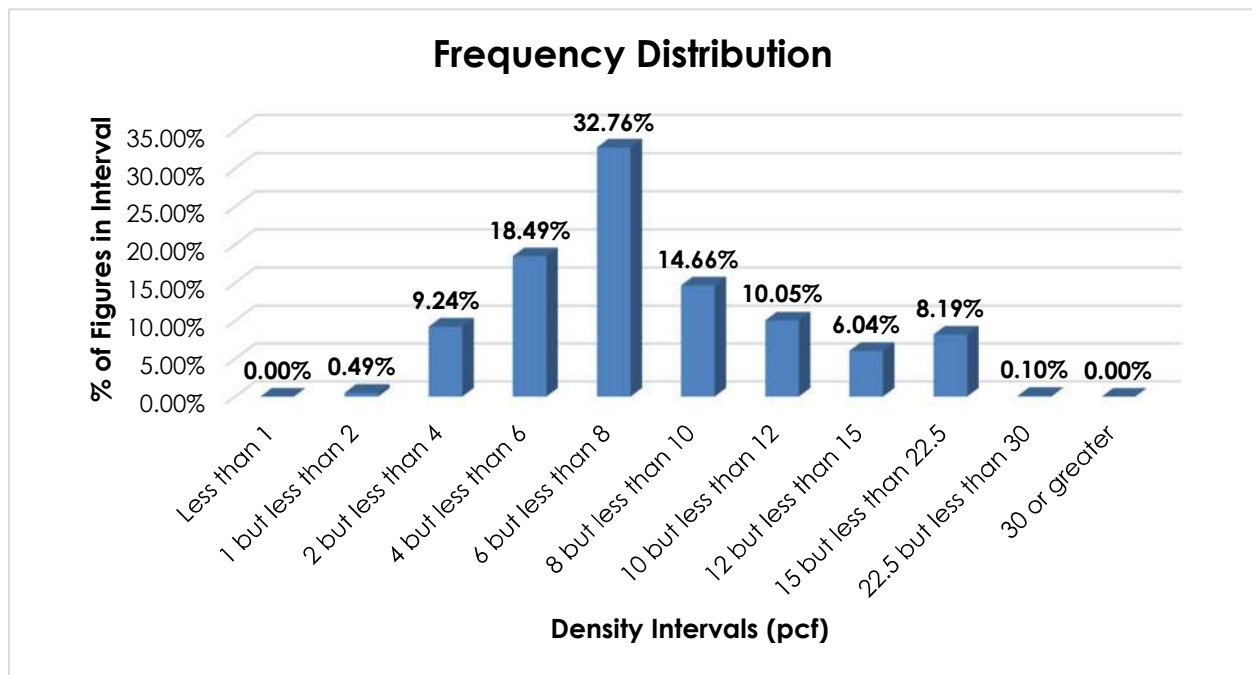
Analysis

Introduction

This proposal is based on the information developed through Research Project 1525, which was initiated to review the transportation characteristics of water coolers. During the course of research, the project was expanded to include other beverage dispensers.

Transportation Characteristics

Density—The information of record includes 32,441 density observations obtained from the FCDC’s Density Study¹. The densities range from 1.73 to 23.47 pcf, with an overall average density of 8.04 pcf. As shown in the graph below, the density distribution is right-skewed, with the highest peak in the 6 but less than 8 pcf interval. Density breaks at 7 and 12 pcf reflect the modality and spread of the distribution.



When the data is evaluated based on the proposed density breaks at 7 and 12 pcf, the density ranges and averages shown in the table below emerge.

Density Groups (pcf)	Density Range (pcf)	Average Density (pcf)
Less than 7	1.73 – 6.99	5.07
7 but less than 12	7.00 – 11.99	8.65
12 or greater	12.00 – 23.47	15.05

¹ The Density Study is part of an ongoing effort by the FCDC to collect information on actual shipments across all product categories handled by the LTL industry. Carriers that choose to participate in the Study periodically submit shipment data captured through their respective freight auditing programs. The FCDC uses verifiable data points, identified by NMFC item, that include the weight and the dimensions and/or cube of the shipping unit.

SUBJECT 9

Handling, Stowability and Liability—There have been no reports of unusual or significant handling, stowability or liability issues.

Conclusion

Based on the foregoing analysis, this proposal would cancel item 53190 with reference to item 53025. Items 53220, 119610 and 119620² would be canceled with reference to a new item, naming “Coolers or Dispensers, beverage or water, with mechanical apparatus.” Classes predicated on density breaks at 7 and 12 pcf³ would be assigned. The table below relates the information of record to the proposed density groupings and FCDC guidelines.

Density Groups (pcf)	Average Density (pcf)	FCDC Minimum Average Density Guideline (pcf)	Class Based on FCDC Density Guidelines
Less than 7	5.07	5	175
7 but less than 12	8.65	8	110
12 or greater	15.05	15	70

Moreover, the FCDC’s Packaging Development Manager has reviewed the proposed minimum packaging requirements and determined that they are appropriate for the LTL environment.

Notes, items 119611 and 119621 would be canceled with no further application.

² Item 119620 would be canceled with reference to the new item, item 63825, naming “Exhibits, museum, Articles of Antiquity or Antiques,” and provisions otherwise applicable. When shipped, the appropriate classification for beverage or syrup dispensers or urns would be dependent upon the product’s representation and intended use.

³ The density provisions would include reference to Item (Rule) 170, the inadvertence clause.

THIS PAGE INTENTIONALLY LEFT BLANK

SUBJECT 10

Re: Radio, Radiotelephone or Television Transmitting or Transmitting and Receiving Sets, or other Radio Impulse or Wireless Audio (Sound) Impulse Transmitting or Transmitting and Receiving Sets, including Cellular Telephones — Items 62820 and 62850

Contact: Lanae C. Peterson Telephone — (703) 838-1810 peterson@nmfta.org

Proponent: Freight Classification Development Council

Present Classification Provisions

Item	Description	Class
	ELECTRICAL EQUIPMENT GROUP: subject to item 60500	
62820	Radio, Radio-telephone or Television Transmitting or Transmitting and Receiving Sets, or other Radio Impulse or Wireless Audio (Sound) Impulse Transmitting or Transmitting and Receiving Sets, separate or combined, in boxes or crates, see Note, item 62822:	
Sub 1	Released value not exceeding \$3.00 per pound.....	100
Sub 2	Released value exceeding \$3.00 per pound but not exceeding \$6.00 per pound.....	125
Sub 3	Released value exceeding \$6.00 per pound but not exceeding \$10.00 per pound.....	175
62822	NOTE—The released value must be entered on shipping order and bill of lading in the following form: 'The agreed or declared value of the property is hereby specifically stated by the shipper to be not exceeding _____ per pound.' If the shipper fails or declines to execute the above statement or designates a value exceeding \$10.00 per pound, shipment will not be accepted, but if shipment is inadvertently accepted, charges will be assessed initially on the basis of the class for the highest value provided. Upon proof of lower actual value, the freight charges will be adjusted to those that would apply if the shipment had been released to the amount of its actual value. (Classes herein based on released value have been authorized by the Interstate Commerce Commission in Released Rates Order No. MC-597 of December 24, 1964, as amended October 9, 1980.)	
62850	Radio-telephones, cellular (Cellular Telephones), see Note, item 62851, in boxes.....	300
62851	NOTE—Applies only on shipments of cellular radio-telephones not specifically released as to value in accordance with the provisions of item 62820 at time of shipment.	

SUBJECT 10

Proposed Classification Provisions

Item	Description	Class
62820	ELECTRICAL EQUIPMENT GROUP: subject to item 60500 Radio, Radio-telephone or Television Transmitting or Transmitting and Receiving Sets, or other Radio Impulse or Wireless Audio (Sound) Impulse Transmitting or Transmitting and Receiving Sets, separate or combined, etc.....	⇒Cancel; see item NEW
62822	NOTE—⇒Cancel; no further application.	
62850	Radio-telephones, cellular (Cellular Telephones), etc.....	⇒Cancel; see item NEW
62851	NOTE—⇒Cancel; no further application.	
⇒NEW	Radio, Radiotelephone or Television Transmitting or Transmitting and Receiving Sets, or other Radio Impulse or Wireless Audio (Sound) Impulse Transmitting or Transmitting and Receiving Sets, including Cellular Telephones, separate or combined, in boxes or crates, subject to Item 170 and having a density in pounds per cubic foot of:	
Sub 1	Less than 8.....	150
Sub 2	8 or greater	100

Analysis

Introduction

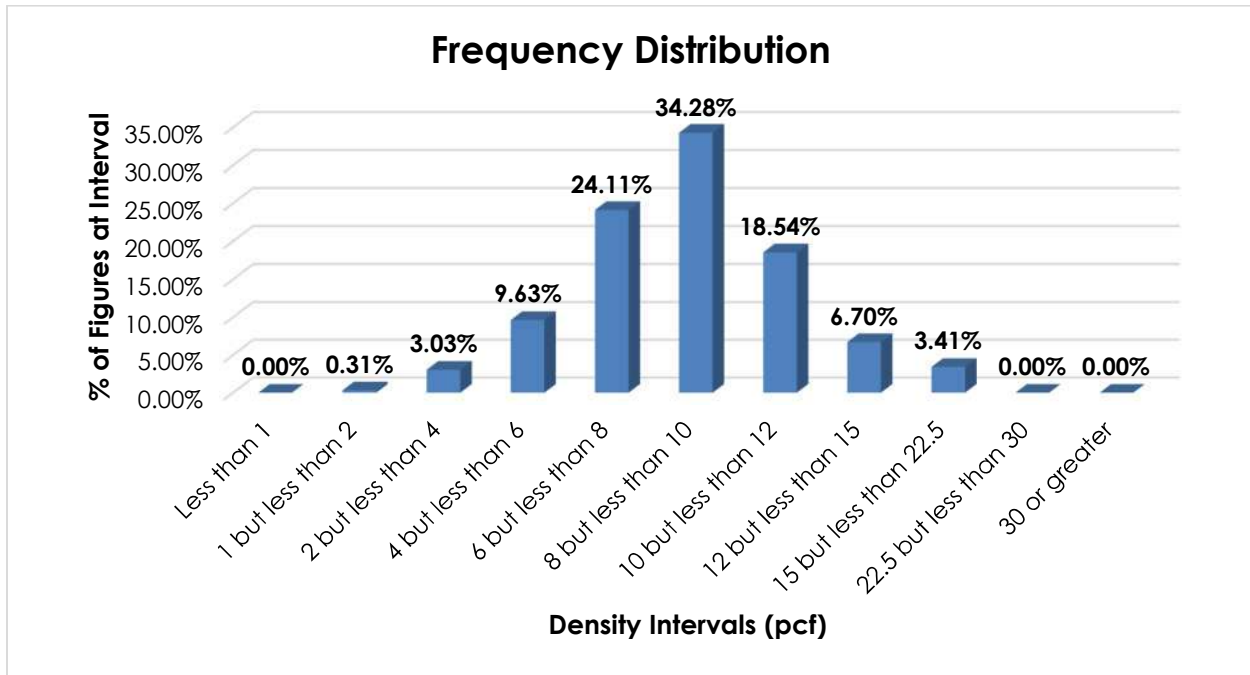
This proposal responds to the summation of Research Project 1521, which sought to review the transportation characteristics of radio, radiotelephone or television transmitting or transmitting and receiving sets, or other radio impulse or wireless audio (sound) impulse transmitting or transmitting and receiving sets, as named in item 62820, and cellular radiotelephones (cellular telephones), as named in item 62850.

Transportation Characteristics

Density—The information of record includes 53,480 density observations obtained from the FCDC's Density Study¹. The densities range from 1.01 to 19.66 pcf, with an overall average density of 8.86 pcf. As shown in the graph on the following page, the densities are clustered around the average, with nearly 77% of the figures falling between 6 and 12 pcf. A density break at 8 pcf reflects the modality and spread of the distribution.

¹ The Density Study is part of an ongoing effort by the FCDC to collect information on actual shipments across all product categories handled by the LTL industry. Carriers that choose to participate in the Study periodically submit shipment data captured through their respective freight auditing programs. The FCDC uses verifiable data points, identified by NMFC item, that include the weight and the dimensions and/or cube of the shipping unit.

SUBJECT 10



When the data is evaluated based on the proposed density break at 8 pcf, the density ranges and averages shown in the table below emerge.

Density Groups (pcf)	Density Range (pcf)	Average Density (pcf)
Less than 8	1.01 – 7.99	6.25
8 or greater	8.00 – 19.66	10.40

Handling, Stowability and Liability—There have been no reports of unusual or significant handling, stowability or liability issues.

Conclusion

Based on the foregoing analysis, items 62850 and 62820 would be canceled with reference to a new item, naming “Radio, Radiotelephone or Television Transmitting or Transmitting and Receiving Sets, or other Radio Impulse or Wireless Audio (Sound) Impulse Transmitting or Transmitting and Receiving Sets, including Cellular Telephones, separate or combined,” and assign classes predicated on density, with a break at 8 pcf². The table below relates the information of record to the proposed density groupings and FCDC guidelines.

Density Groups (pcf)	Average Density (pcf)	FCDC Minimum Average Density Guideline (pcf)	Class based on FCDC Density Guidelines
Less than 8	6.25	6	150
8 or greater	10.40	9	100

Notes, items 62822 and 62851 would be canceled with no further application.

² The density provisions would include reference to Item (Rule) 170, the inadvertence clause.

THIS PAGE INTENTIONALLY LEFT BLANK

SUBJECT 11

Re: Shucks, (Husks), corn — Item 175740

Contact: Lanae C. Peterson Telephone — (703) 838-1810 peterson@nmfta.org

Proponent: Freight Classification Development Council

Present Classification Provisions

Item	Description	Class
175740	Shucks (Husks) , corn, in boxes	100

Proposed Classification Provisions

Item	Description	Class
⇒175740	Shucks (Husks) , corn, in boxes, subject to Item 170 and having a density in pounds per cubic foot of:	
Sub 1	Less than 6	175
Sub 2	6 but less than 10.....	150
Sub 3	10 or greater.....	92.5

Analysis

Introduction

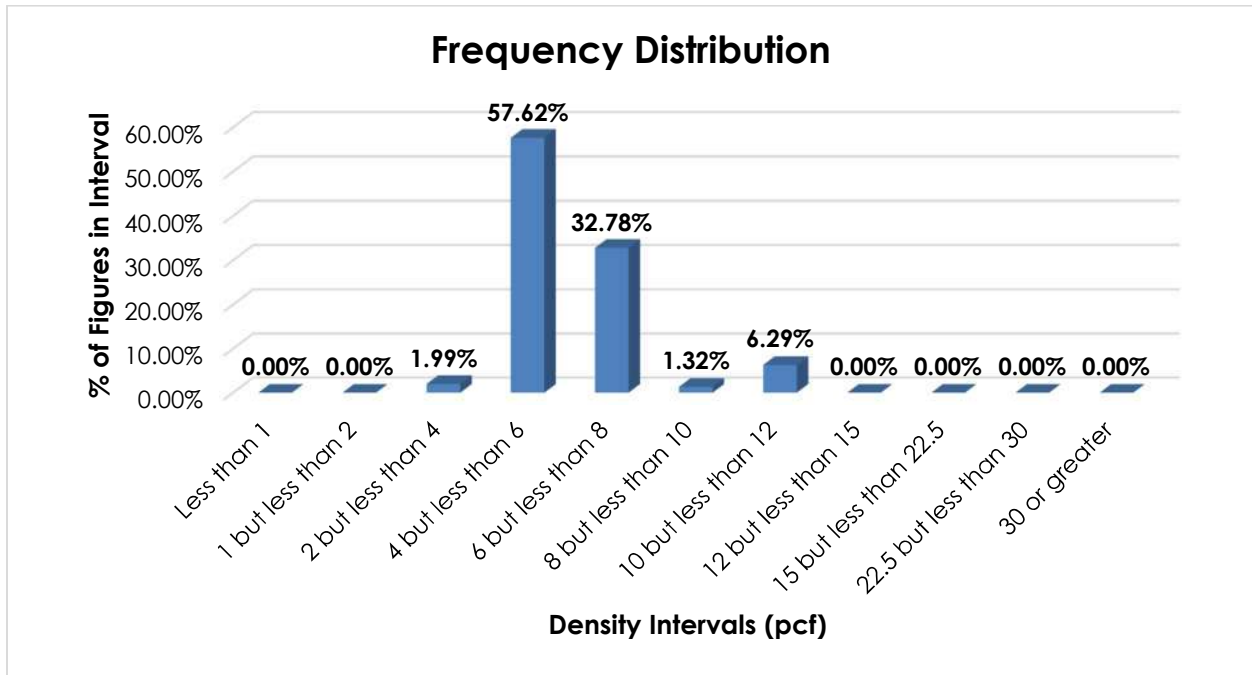
This proposal responds to the summation of Research Project 1522, which sought to review the transportation characteristics of corn husks, as named in item 175740.

Transportation Characteristics

Density—The information of record includes 302 density observations submitted by a carrier and obtained from the FCDC's Density Study¹. The densities range from 2.31 to 10.99 pcf, with an overall average density of 6.13 pcf. As shown in the graph on the following page, the densities are tightly clustered around the average, with almost 90% of the figures falling between 4 and 8 pcf. Density breaks at 6 and 10 pcf reflect the modality and spread of the distribution.

¹ The Density Study is part of an ongoing effort by the FCDC to collect information on actual shipments across all product categories handled by the LTL industry. Carriers that choose to participate in the Study periodically submit shipment data captured through their respective freight auditing programs. The FCDC uses verifiable data points, identified by NMFC item, that include the weight and the dimensions and/or cube of the shipping unit.

SUBJECT 11



When the data is evaluated based on the proposed density breaks at 6 and 10 pcf, the density ranges and averages shown in the table below emerge.

Density Groups (pcf)	Density Range (pcf)	Average Density (pcf)
Less than 6	2.31 – 5.98	5.30
6 but less than 10	6.01 – 9.66	6.76
10 or greater	10.00 – 10.99	10.58

Handling, Stowability and Liability—There have been no reports of unusual or significant handling, stowability or liability issues.

Conclusion

Based on the foregoing analysis, item 175740 would be amended to assign classes predicated on density, with breaks at 6 and 10 pcf². The table below relates the information of record to the proposed density groupings and FCDC guidelines.

Density Groups (pcf)	Average Density (pcf)	FCDC Minimum Average Density Guideline (pcf)	Class based on FCDC Density Guidelines
Less than 6	5.30	5	175
6 but less than 10	6.76	6	150
10 or greater	10.58	10.5	92.5

² The density provisions would include reference to Item (Rule) 170, the inadvertence clause.

SUBJECT 12

Re: Uninterruptible Power Supplies — Item 63496

Contact: Amber V. Parker Telephone — (703) 838-1810 parker@nmfta.org

Proponent: Freight Classification Development Council

Present Classification Provisions

Item	Description	Class
	ELECTRICAL EQUIPMENT GROUP: subject to item 60500	
63160	Switches, Switch Boxes, Electrical Enclosures or Electrical Wiring Equipment, see Note, item 63162, viz.: Circuit Breakers or Switches, including Air-Break Switches or Timing Switches; Electric Meter Sockets; Electrical Enclosures, NOI; Fittings, electrical conduit, NOI; Junction Boxes or Cabinets; Outlet Box Covers, other than outlet box plates; Outlet Boxes; Switch Boxes, NOI; Terminal Boxes or Housings; Terminal or Junction Blocks; Terminals, electrical cable or wiring, NOI, including Connectors or Butt Splices, see Note, item 63163; In boxes, see Note, item 63161, subject to Item 170 and having a density in pounds per cubic foot of:	
Sub 1	Less than 1	400
Sub 2	1 but less than 2.....	300
Sub 3	2 but less than 4.....	250
Sub 4	4 but less than 6.....	175
Sub 5	6 but less than 8.....	125
Sub 6	8 but less than 10.....	100
Sub 7	10 but less than 12.....	92.5
Sub 8	12 but less than 15.....	85
Sub 9	15 but less than 22.5.....	70
Sub 10	22.5 but less than 30.....	65
Sub 11	30 or greater.....	60

SUBJECT 12

Present Classification Provisions — Concluded

Item	Description	Class
63161	<p>ELECTRICAL EQUIPMENT GROUP: subject to item 60500</p> <p>NOTE—The following departures from packing requirements are permitted:</p> <ol style="list-style-type: none"> 1. Terminals, terminal boxes or housings, electric meter sockets, or terminal or junction blocks may be shipped in Packages 1241 or 1273. 2. Aluminum railway switch or junction boxes exceeding 140 pounds may be shipped on skids. 3. Circuit breakers or switches may be shipped in crates or Packages 1241, 1273 or 2243. 	
63162	<p>NOTE—Provisions do not apply on plastic underground utility service boxes or enclosures such as pedestal housings, sectionalizing cabinets or substation covers intended for outdoor use. For provisions applicable on these commodities, see item 50808, 'Boxes or Enclosures, underground utility service, plastic.'</p>	
63163	<p>NOTE—Also applies on terminals joined by a web of metal forming continuous strips to permit automatic machine assembly.</p>	
63494	<p>NOTE—Applies on articles primarily designed to provide a temporary back-up power source for computers and other electronic equipment in the event of a power failure.</p>	
63496	<p>Uninterruptible Power Supplies (UPSs), containing a sealed lead acid battery and transformer, see Note, item 63494, in boxes.....70</p>	

THIS SPACE INTENTIONALLY LEFT BLANK

SUBJECT 12

Proposed Classification Provisions

Item	Description	Class
63160	<p>ELECTRICAL EQUIPMENT GROUP: subject to item 60500</p> <p>Switches, Switch Boxes, Electrical Enclosures or Electrical Wiring Equipment, see Note, item 63162, viz.:</p> <p>Circuit Breakers or Switches, including Air-Break Switches or Timing Switches;</p> <p>Electric Meter Sockets;</p> <p>Electrical Enclosures, NOI;</p> <p>Fittings, electrical conduit, NOI;</p> <p>Junction Boxes or Cabinets;</p> <p>Outlet Box Covers, other than outlet box plates;</p> <p>Outlet Boxes;</p> <p>Switch Boxes, NOI;</p> <p>Terminal Boxes or Housings;</p> <p>Terminal or Junction Blocks;</p> <p>Terminals, electrical cable or wiring, NOI, including Connectors or Butt Splices, see Note, item 63163;</p> <p>⇒ Uninterruptible Power Supplies (UPSs), see Note, item NEW;</p> <p>In boxes, see Note, item 63161, subject to Item 170 and having a density in pounds per cubic foot of:</p>	
Sub 1	Less than 1	400
Sub 2	1 but less than 2.....	300
Sub 3	2 but less than 4.....	250
Sub 4	4 but less than 6.....	175
Sub 5	6 but less than 8.....	125
Sub 6	8 but less than 10.....	100
Sub 7	10 but less than 12.....	92.5
Sub 8	12 but less than 15.....	85
Sub 9	15 but less than 22.5.....	70
Sub 10	22.5 but less than 30.....	65
Sub 11	30 or greater	60
63161	NOTE—No Change.	
63162	NOTE—No Change.	
63163	NOTE—No Change.	
⇒NEW	NOTE—Applies on articles primarily designed to provide a temporary back-up power source for computers and other electronic equipment in the event of a power failure.	
63494	NOTE—⇒Cancel; see item NEW.	
63496	<p>Uninterruptible Power Supplies (UPSs), containing a sealed lead acid battery and transformer, etc</p>	⇒Cancel; see item 63160

SUBJECT 12

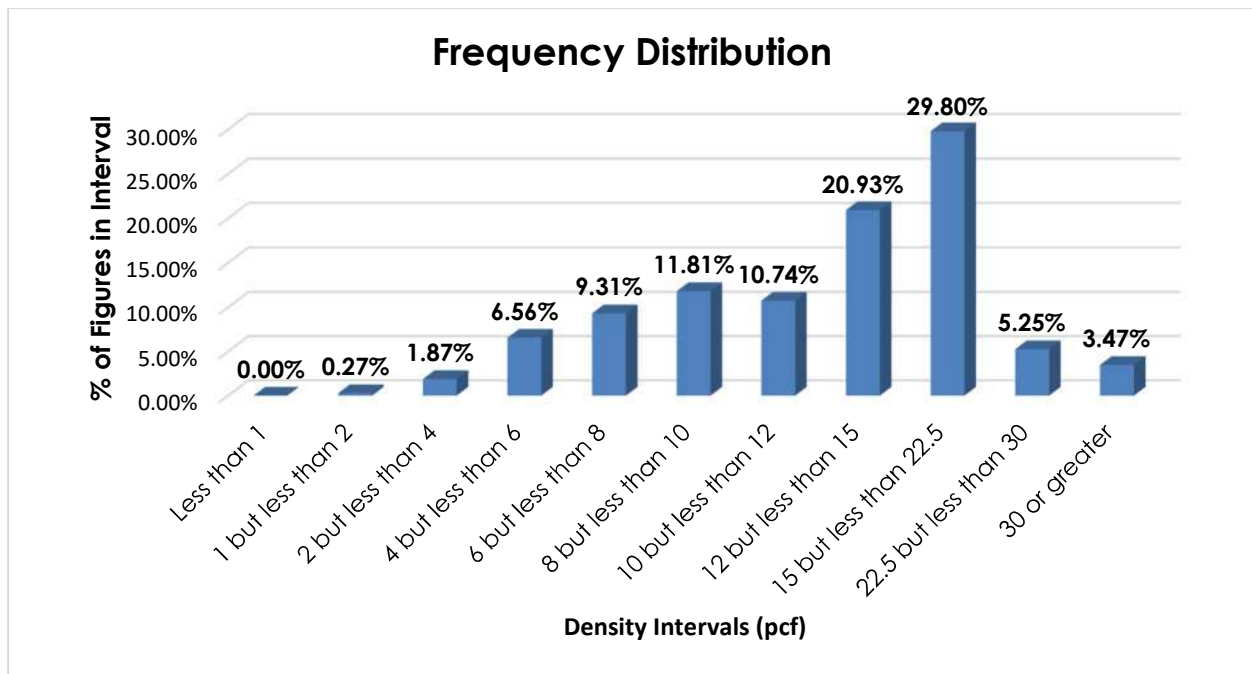
Analysis

Introduction

This proposal responds to the summation of Research Project 1517, which sought to review the transportation characteristics of uninterrupted power supplies.

Transportation Characteristics

Density—The information of record includes 14,150 density observations submitted by carriers and obtained from the FCDC’s Density Study¹. The densities range from 1.02 to 63.10 pcf, with an overall average density of 14.18 pcf. As shown in the graph below, the density distribution is left-skewed.



Handling, Stowability and Liability—There have been no reports of unusual or significant handling, stowability or liability issues.

¹ The Density Study is part of an ongoing effort by the FCDC to collect information on actual shipments across all product categories handled by the LTL industry. Carriers that choose to participate in the Study periodically submit shipment data captured through their respective freight auditing programs. The FCDC uses verifiable data points, identified by NMFC item, that include the weight and the dimensions and/or cube of the shipping unit.

SUBJECT 12**Conclusion**

Based on the foregoing analysis, and in the interest of clarification and simplification, item 63496 would be canceled with reference to the full-scale, density-based provisions of item 63160². Concurrently, this proposal would amend the "viz." listing in item 63160 to include "Uninterruptible Power Supplies (UPSs)."

Note, item 63494 would be cancelled with reference to a new Note attendant to item 63160.

² Item 63160 provides the FCDC's standard 11-subprovision density scale, which includes reference to Item (Rule) 170, the inadvertence clause.

THIS PAGE INTENTIONALLY LEFT BLANK

SUBJECT 13

Re: Kits, industrial spill containment — Item 108140

Contact: Angela L. Li Telephone — (703) 838-1882 angela.li@nmfta.org

Proponent: Freight Classification Development Council

Present Classification Provisions

Item	Description	Class
108107	Kits , emergency, including First Aid Kits, Highway Emergency Kits, Emergency Preparedness Kits or Survival Kits , NOI, see Notes, items 108108 and 108109, in boxes, subject to Item 170 and having a density in pounds per cubic foot of:	
Sub 1	Less than 1.....	400
Sub 2	1 but less than 2.....	300
Sub 3	2 but less than 4.....	250
Sub 4	4 but less than 6.....	175
Sub 5	6 but less than 8.....	125
Sub 6	8 but less than 10.....	100
Sub 7	10 but less than 12.....	92.5
Sub 8	12 but less than 15.....	85
Sub 9	15 but less than 22.5.....	70
Sub 10	22.5 but less than 30.....	65
Sub 11	30 or greater.....	60
108108	NOTE—Applies on kits for commercial, institutional or personal use, containing a complement of support equipment, tools, provisions, supplies or other related accessories, for the control or remediation of incident, accident or emergency.	
108109	NOTE—Does not apply on kits containing narcotics or other controlled substances nor on kits containing articles subject to the U.S. Department of Transportation hazardous materials regulations.	
108140	Kits , industrial spill containment, for acids, caustic substances or petroleum, see Note, item 108141, on pallets.....	65
108141	NOTE—Applies on spill containment kits comprised of absorption material, plastic container, brush, shovel and safety equipment such as: steel-toe rubber boots, headgear and face shield, goggles, gloves, apron or disposable clothing.	

SUBJECT 13

Proposed Classification Provisions

Item	Description	Class
108107	Kits , emergency, including First Aid Kits, Highway Emergency Kits, Emergency Preparedness Kits or Survival Kits , NOI, see Notes, items 108108 and 108109, in boxes, subject to Item 170 and having a density in pounds per cubic foot of:	
Sub 1	Less than 1.....	400
Sub 2	1 but less than 2.....	300
Sub 3	2 but less than 4.....	250
Sub 4	4 but less than 6.....	175
Sub 5	6 but less than 8.....	125
Sub 6	8 but less than 10.....	100
Sub 7	10 but less than 12.....	92.5
Sub 8	12 but less than 15.....	85
Sub 9	15 but less than 22.5.....	70
Sub 10	22.5 but less than 30.....	65
Sub 11	30 or greater.....	60
108108	NOTE—No change.	
108109	NOTE—No change.	
108140	Kits , industrial spill containment, for acids, caustic substances or petroleum, etc.....	⇒Cancel; see item 108107
108141	NOTE—⇒Cancel; no further application.	

Analysis and Conclusion

To address interpretive concerns regarding industrial spill containment kits, this proposal would cancel item 108140 with reference to item 108107 to foster clarification and simplification.

Note, item 108141, would be canceled as having no further application.

SUBJECT 14

Re: Boat Construction Kits — Item 24620

Contact: Larissa A. Franklin Telephone — (703) 838-1824 franklin@nmfta.org

Proponent: Freight Classification Development Council

Present Classification Provisions

Item	Description	Class
	BOAT GROUP: subject to item 24500	
24620	Boat Construction Kits , see Note, item 24623, in boxes or crates:	
Sub 1	With hull, cabins, decks, or sections thereof molded to shape	200
Sub 2	NOI.....	85
24623	NOTE—Applies only on a collection of material or stock requiring bending, cutting, shaping, fitting, or other work of fabrication for the construction of a boat.	
24670	Boats or Boat Sections, viz.:	
	Boards , water sports, see Note, item 24671;	
	Boats or Boat Sections , NOI;	
	Cabins;	
	Canoes;	
	Catamarans , NOI;	
	Deck Houses;	
	Hulls;	
	Kayaks , NOI;	
	Pedal Boats , NOI;	
	Pontoon Boats;	
	Sailboats;	
Sub 1	In boxes, crates or Packages 176, 2115, 2232, 2356, 2366, 2504 or 2525:	
Sub 2	Greatest dimension exceeding 96 inches	500
Sub 3	Greatest dimension not exceeding 96 inches.....	300
Sub 4	In packages other than as set forth in sub 1:	
Sub 5	Greatest dimension exceeding 96 inches	500
Sub 6	Greatest dimension not exceeding 96 inches.....	400
24671	NOTE—Applies on products such as Bodyboards, Kickboards, Kneeboards, Paddleboards, Sailboards , with or without sails, or Surfboards, exceeding 96 inches in greatest dimension. For provisions applicable to articles not exceeding 96 inches in greatest dimension, see item 15520.	

SUBJECT 14

Proposed Classification Provisions

Item	Description	Class
24620	BOAT GROUP: subject to item 24500 Boat Construction Kits, etc.....	⇒Cancel; see item 24670
24623	NOTE—⇒Cancel; no further application.	
24670	Boats or Boat Sections, viz.: Boards, water sports, see Note, item 24671; ⇒ Boat Construction Kits; Boats or Boat Sections, NOI; Cabins; Canoes; Catamarans, NOI; Deck Houses; Hulls; Kayaks, NOI; Pedal Boats, NOI; Pontoon Boats; Sailboats;	
Sub 1	In boxes, crates or Packages 176, 2115, 2232, 2356, 2366, 2504 or 2525:	
Sub 2	Greatest dimension exceeding 96 inches	500
Sub 3	Greatest dimension not exceeding 96 inches.....	300
Sub 4	In packages other than as set forth in sub 1:	
Sub 5	Greatest dimension exceeding 96 inches	500
Sub 6	Greatest dimension not exceeding 96 inches.....	400
24671	NOTE—Applies on products such as Bodyboards, Kickboards, Kneeboards, Paddleboards, Sailboards, with or without sails, or Surfboards, exceeding 96 inches in greatest dimension. For provisions applicable to articles not exceeding 96 inches in greatest dimension, see item 15520.	

Analysis and Conclusion

To address interpretive concerns regarding boat construction kits, this proposal would cancel item 24620 with reference to item 24670 to foster clarification and simplification. Note, item 24623 would be canceled with no further application.

SUBJECT 15

Re: Rope, synthetic fiber — Item 171240

Contact: Adam C. Mercer Telephone — (703) 838-1911 mercer@nmfta.org

Proponent: Freight Classification Development Council

Present Classification Provisions

Item	Description	Class
53390	Cord, Cordage, Rope , other than wire rope, String or Twine , NOI, see Note, item 53392, in boxes or on reels, subject to Item 170 and having a density in pounds per cubic foot of:	
Sub 1	Less than 10.....	125
Sub 2	10 but less than 15.....	85
Sub 3	15 or greater.....	70
53392	NOTE—Does not apply on commodities represented as 'ribbon,' 'thread' or 'yarn.'	
171240	Rope , synthetic fiber, with or without wire center, plastic coated, in boxes	70

Proposed Classification Provisions

Item	Description	Class
53390	Cord, Cordage, Rope , other than wire rope, String or Twine , NOI, see Note, item 53392, in boxes or on reels, subject to Item 170 and having a density in pounds per cubic foot of:	
Sub 1	Less than 10.....	125
Sub 2	10 but less than 15.....	85
Sub 3	15 or greater.....	70
53392	NOTE—Does not apply on commodities represented as 'ribbon,' 'thread' or 'yarn.'	
171240	Rope , synthetic fiber, with or without wire center, plastic coated, etc.....	⇒Cancel; see item 53390

Analysis and Conclusion

To address interpretive concerns regarding synthetic fiber rope, this proposal would cancel item 171240 with reference to item 53390 to foster clarification and simplification.

THIS PAGE INTENTIONALLY LEFT BLANK

SUBJECT 16

Re: Liners, swimming pool or pond, plastic film or sheeting

Contact: Lanae C. Peterson Telephone — (703) 838-1810 peterson@nmfta.org

Proponent: Freight Classification Development Council

Present Classification Provisions

Item	Description	Class
	PLASTIC OR RUBBER ARTICLES GROUP: subject to item 156500	
156600	Articles, see Note, item 156601, viz.: Articles, NOI; Liners, swimming pool, plastic film or sheeting; [Other Articles Listed—Not Involved.] In boxes, crates, drums or Packages 1078, 1241, 1273 or 2213, see Note, item 156602, subject to Item 170 and having a density in pounds per cubic foot of:	
Sub 1	Less than 1	400
Sub 2	1 but less than 2.....	300
Sub 3	2 but less than 4.....	250
Sub 4	4 but less than 6.....	175
Sub 5	6 but less than 8.....	125
Sub 6	8 but less than 10.....	100
Sub 7	10 but less than 12.....	92.5
Sub 8	12 but less than 15.....	85
Sub 9	15 but less than 22.5.....	70
Sub 10	22.5 but less than 30.....	65
Sub 11	30 or greater.....	60
156601	NOTE—Not Involved.	
156602	NOTE—Not Involved.	
156603	NOTE—Not Involved.	
156604	NOTE—Not Involved.	

THIS SPACE INTENTIONALLY LEFT BLANK

SUBJECT 16

Proposed Classification Provisions

Item	Description	Class
	PLASTIC OR RUBBER ARTICLES GROUP: subject to item 156500	
156600	Articles , see Note, item 156601, viz.: Articles , NOI; Liners , swimming pool or pond, plastic film or sheeting; [Other Articles Listed—No Change.] In boxes, crates, drums or Packages 1078, 1241, 1273 or 2213, see Note, item 156602, subject to Item 170 and having a density in pounds per cubic foot of:	
Sub 1	Less than 1	400
Sub 2	1 but less than 2.....	300
Sub 3	2 but less than 4.....	250
Sub 4	4 but less than 6.....	175
Sub 5	6 but less than 8.....	125
Sub 6	8 but less than 10.....	100
Sub 7	10 but less than 12.....	92.5
Sub 8	12 but less than 15.....	85
Sub 9	15 but less than 22.5.....	70
Sub 10	22.5 but less than 30.....	65
Sub 11	30 or greater.....	60
156601	NOTE—No Change.	
156602	NOTE—No Change.	
156603	NOTE—No Change.	
156604	NOTE—No Change.	

Analysis and Conclusion

To address interpretive concerns regarding plastic pond liners, this proposal would amend the "viz." listing in item 156600 to name, "Liners, swimming pool or pond, plastic film or sheeting," to foster clarification.

SUBJECT 17

Re: Tube Caps — Item 40225

Contact: Adam C. Mercer Telephone — (703) 838-1911 mercer@nmfta.org

Proponent: Freight Classification Development Council

Present Classification Provisions

Item	Description	Class
40225	Caps, Covers, Discs, Ends, Bands, Lids, Rings or Tops , NOI, for bottles, cans, cups, collapsible tubes, glasses, jars or jugs, see Note, item 40226, in boxes, subject to Item 170 and having a density in pounds per cubic foot of:	
Sub 1	Less than 1.....	400
Sub 2	1 but less than 2.....	300
Sub 3	2 but less than 4.....	250
Sub 4	4 but less than 6.....	175
Sub 5	6 but less than 8.....	125
Sub 6	8 but less than 10.....	100
Sub 7	10 but less than 12.....	92.5
Sub 8	12 but less than 15.....	85
Sub 9	15 but less than 22.5.....	70
Sub 10	22.5 but less than 30.....	65
Sub 11	30 or greater.....	60
40226	NOTE—Also applies on Bands, Sleeves or Wrappers made of heat-shrinkable tubular plastic film, cut to size, such as used for product labeling, securement or to protect against tampering.	

Proposed Classification Provisions

Item	Description	Class
40225	Caps, Covers, Discs, Ends, Bands, Lids, Rings or Tops , NOI, for bottles, cans, cups, tubes, glasses, jars or jugs, see Note, item 40226, in boxes, subject to Item 170 and having a density in pounds per cubic foot of:	
Sub 1	Less than 1.....	400
Sub 2	1 but less than 2.....	300
Sub 3	2 but less than 4.....	250
Sub 4	4 but less than 6.....	175
Sub 5	6 but less than 8.....	125
Sub 6	8 but less than 10.....	100
Sub 7	10 but less than 12.....	92.5
Sub 8	12 but less than 15.....	85
Sub 9	15 but less than 22.5.....	70
Sub 10	22.5 but less than 30.....	65
Sub 11	30 or greater.....	60

SUBJECT 17

Proposed Classification Provisions — Concluded

Item	Description	Class
40226	NOTE—No change.	

Analysis and Conclusion

To address interpretive concerns regarding tube caps, this proposal would amend the description of item 40225 to read “Caps, Covers, Discs, Ends, Bands, Lids, Rings or Tops, NOI, for bottles, cans, cups, tubes, glasses, jars or jugs” to foster clarification.

SUBJECT 18

Re: Safes or Vaults, or Parts thereof — Item 172350

Contact: Ashley L. Gencarelli Telephone — (703) 838-1809 gencarelli@nmfta.org

Proponent: Freight Classification Development Council

Present Classification Provisions

Item	Description	Class
172350	Safes or Vaults, or Parts thereof , in boxes, crates or Package 2460, subject to Item 170 and having a density in pounds per cubic foot of:	
Sub 1	Less than 15.....	100
Sub 2	15 or greater	70

Proposed Classification Provisions

Item	Description	Class
172350	Safes or Vaults, or Parts thereof , ⇒NOI, in boxes, crates or Package 2460, subject to Item 170 and having a density in pounds per cubic foot of:	
Sub 1	Less than 15.....	100
Sub 2	15 or greater	70

Analysis and Conclusion

As a result of action taken on Docket 2023-3, Subject 15 (October 2023), numerous items naming specific types of safes or vaults were canceled with reference to new item 172350. Subsequent to the approval of the proposal, it was found that there were interpretive problems with other items applying on safes or vaults in the Classification. As such, this proposal would add "NOI" to the description of item 172350 to foster clarification.

THIS PAGE INTENTIONALLY LEFT BLANK

SUBJECT 19

Re: Fiberboard or Paperboard Boxes

Contact: Ashley L. Gencarelli Telephone — (703) 838-1809 gencarelli@nmfta.org

Proponent: Freight Classification Development Council

Present Classification Provisions

Item	Description	Class
179180	<p>Stationery or Office Supplies, viz.: Binders or Covers, book or loose-leaf, NOI, with or without binding mechanism; Calendars, Agenda Books, Appointment Books or Day Planners, NOI; Clipboards, including Storage Clipboards; Desk Accessories, NOI, including Pen or Pencil Sets, Tape Dispensers or Holders, Desk or Letter Trays, Desk Blotters or Desk Pads, or Paperweights; Erasers, NOI; Fasteners, Clips, Clasps or Holders, paper or letter file; File Folders, Pockets or Jackets, NOI; Ink or Stamping Pads; Lifters or Protectors, loose-leaf; Pencils, Pens, Markers, Crayons or Chalk, writing, marking or drawing, NOI; Ribbons, inked, NOI; Stationery, NOI; Stationery Sets or Papeteries, see Note, item 179182; Stencils, NOI; Thumbtacks or Push Pins; In boxes, subject to Item 170 and having a density in pounds per cubic foot of:</p>	
Sub 1	Less than 1	400
Sub 2	1 but less than 2	300
Sub 3	2 but less than 4	250
Sub 4	4 but less than 6	175
Sub 5	6 but less than 8	125
Sub 6	8 but less than 10	100
Sub 7	10 but less than 12	92.5
Sub 8	12 but less than 15	85
Sub 9	15 but less than 22.5.....	70
Sub 10	22.5 but less than 30.....	65
Sub 11	30 or greater.....	60
179182	NOTE—Applies on sets of writing paper, note cards or paper, greeting cards or envelopes, with or without complement of accessories, such as albums, address books, journals, rubber stamps, stickers, pens or pencils in same retail package.	

SUBJECT 19

Proposed Classification Provisions

Item	Description	Class
179180	<p>Stationery or Office Supplies, viz.: Binders or Covers, book or loose-leaf, NOI, with or without binding mechanism; Calendars, Agenda Books, Appointment Books or Day Planners, NOI; Clipboards, including Storage Clipboards; Desk Accessories, NOI, including Pen or Pencil Sets, Tape Dispensers or Holders, Desk or Letter Trays, Desk Blotters or Desk Pads, or Paperweights; Erasers, NOI; Fasteners, Clips, Clasps or Holders, paper or letter file; File Folders, Pockets or Jackets, NOI, ⇒see Note, item NEW; Ink or Stamping Pads; Lifters or Protectors, loose-leaf; Pencils, Pens, Markers, Crayons or Chalk, writing, marking or drawing, NOI; Ribbons, inked, NOI; Stationery, NOI; Stationery Sets or Papeteries, see Note, item 179182; Stencils, NOI; Thumbtacks or Push Pins; In boxes, subject to Item 170 and having a density in pounds per cubic foot of:</p>	
Sub 1	Less than 1	400
Sub 2	1 but less than 2	300
Sub 3	2 but less than 4	250
Sub 4	4 but less than 6	175
Sub 5	6 but less than 8	125
Sub 6	8 but less than 10	100
Sub 7	10 but less than 12	92.5
Sub 8	12 but less than 15	85
Sub 9	15 but less than 22.5.....	70
Sub 10	22.5 but less than 30.....	65
Sub 11	30 or greater.....	60
⇒NEW	NOTE—Does not apply on fiberboard or paperboard boxes. For applicable provisions, see item 29785.	
179182	NOTE—No Change.	

Analysis and Conclusion

To address interpretive concerns regarding the applicable provisions for fiberboard or paperboard boxes, this proposal would establish a new attendant Note to item 179180 to foster clarification and simplification.

SUBJECT 2023-3, Subject 14—DEFERRED SUBJECT

Re: Windows, bank drive-up or walk-up

Contact: Angela L. Li Telephone — (703) 838-1882 angela.li@nmfta.org

Proponent: Freight Classification Development Council

Present Classification Provisions

Item	Description	Class
	BUILDING MATERIALS, MISCELLANEOUS, GROUP: subject to item 33570	
35540	Windows (Sash or Sash and Frames combined), NOI, glazed, with or without screens or necessary hardware:	
Sub 1	In boxes, crates or Package 2442, subject to Item 170 and having a density in pounds per cubic foot of:	
Sub 2	Less than 6	300
Sub 3	6 but less than 10	150
Sub 4	10 or greater.....	77.5
Sub 5	In packages other than boxes, crates or Package 2442, subject to Item 170 and having a density in pounds per cubic foot of:	
Sub 6	Less than 6	400
Sub 7	6 but less than 10	175
Sub 8	10 or greater.....	85
	BUILDING METALWORK GROUP: subject to item 35600	
37375	Windows, bank drive-up or walk-up, steel, see Note, item 37377, in boxes or crates.....	85
37377	NOTE—Applies only on flush or bay types, with clerks' working counters or tops, with or without electrically or manually operated drawers, with or without glass, with or without electrical wiring, or lighting, heating, defrosting or communications speaker units, but not including other electrical communications or visual apparatus nor pneumatic transmission apparatus nor cameras.	

THIS SPACE INTENTIONALLY LEFT BLANK

SUBJECT 2023-3, Subject 14—DEFERRED SUBJECT

Proposed Classification Provisions

Item	Description	Class
⇒35540	Windows (Sash or Sash and Frames combined) , NOI, glazed, with or without screens or necessary hardware:	
Sub 1	In boxes, crates or Package 2442, subject to Item 170 and having a density in pounds per cubic foot of:	
Sub 2	Less than 4	400
Sub 3	4 but less than 8	200
Sub 4	8 but less than 12	110
Sub 5	12 or greater.....	92.5
Sub 6	In packages other than boxes, crates or Package 2442, subject to Item 170 and having a density in pounds per cubic foot of:	
Sub 7	Less than 4	500
Sub 8	4 but less than 8	250
Sub 9	8 but less than 12	125
Sub 10	12 or greater.....	100
	BUILDING METALWORK GROUP: subject to item 35600	
37375	Windows , bank drive-up or walk-up, steel, etc	⇒Cancel; see item 35540
37377	NOTE—⇒Cancel; no further application.	

Analysis

Introduction

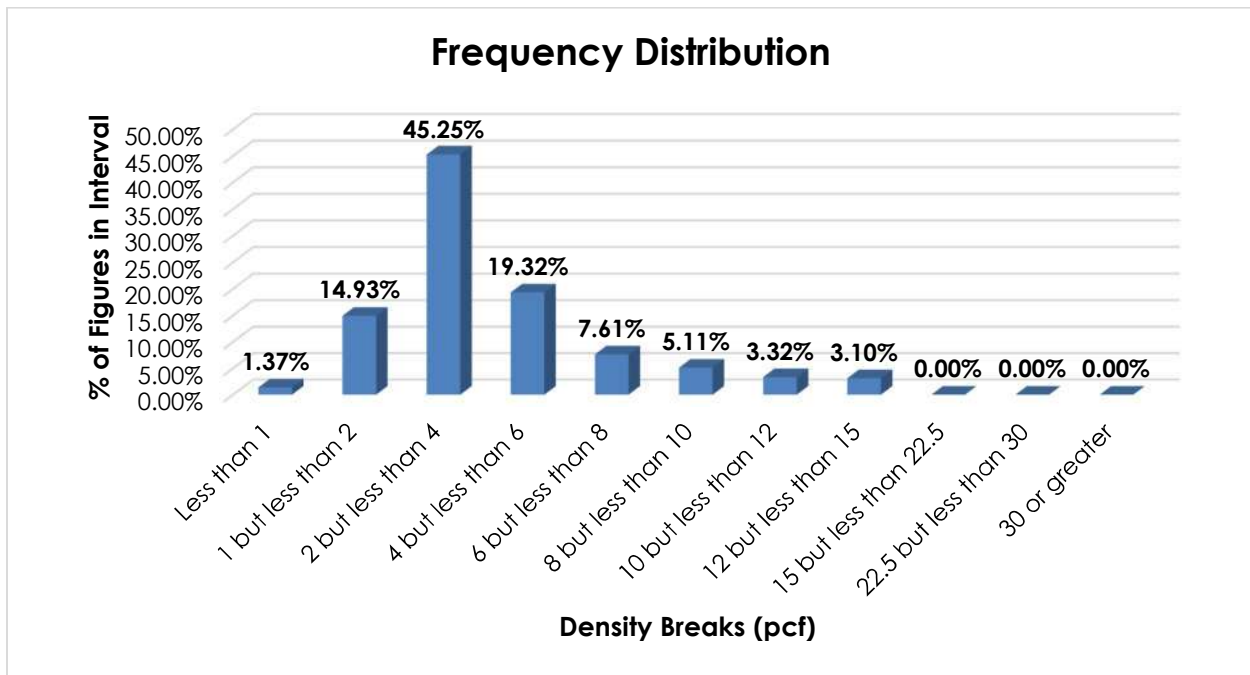
This proposal responds to the summation of Research Project 1519, which sought to review the transportation characteristics of steel bank drive-up or walk-up windows, as named in item 37375. During the course of research, the project was expanded to include other types of service or transactional windows. This proposal was initially discussed by the FCDC at its public meeting on October 3, 2023, in Alexandria, VA. Following discussion regarding the transportation characteristics of these commodities, the FCDC voted to defer disposition of this proposal pending further review.

Transportation Characteristics

Density—The information of record includes 49,813 density observations obtained from the FCDC’s Density Study¹. The densities range from 0.02 to 14.64 pcf, with an overall average density of 4.24 pcf. As shown in the graph on the following page, the density distribution is right-skewed. Density breaks at 4, 8, and 12 pcf reflect the modality and spread of the distribution.

¹ The Density Study is part of an ongoing effort by the FCDC to collect information on actual shipments across all product categories handled by the LTL industry. Carriers that choose to participate in the Study periodically submit shipment data captured through their respective freight auditing programs. The FCDC uses verifiable data points, identified by NMFC item, that include the weight and the dimensions and/or cube of the shipping unit.

SUBJECT 2023-3, Subject 14—DEFERRED SUBJECT



When the data is evaluated based on the proposed density breaks at 4, 8, and 12 pcf, the density ranges and averages shown in the table below emerge.

Density Groups (pcf)	Density Range (pcf)	Average Density (pcf)
Less than 4	0.02 – 3.99	2.51
4 but less than 8	4.00 – 7.99	5.44
8 but less than 12	8.00 – 11.99	9.70
12 or greater	12.00 – 14.64	13.26

Handling—Windows may be tendered in boxes or crates, or in Package 2442, or in packages other than boxes, crates or Package 2442. When tendered for shipment in boxes secured on lift truck skids or pallets, crates or in Package 2442, handling concerns can be mitigated; though, some issues still exist due to the inherent fragility of windows. Articles shipped in packages that provide minimal exterior protection necessitate additional care and attention when handling the freight to avoid damage.

Stowability—When windows are tendered in boxes or crates, or in Package 2442 a flat load-bearing surface will typically be present, which can allow for loading other freight on top of the handling unit. There will typically be lateral support for adjacent freight as well. However, the freight must be compatible with windows to mitigate the risk of damage to these inherently fragile commodities.

When tendered in packages other than boxes, crates or Package 2442, a regular load-bearing surface for top freight or lateral support for adjacent freight may not be present. This can result in increased time and effort for the carrier to properly structure the vehicle load to mitigate the chance of damage to the products. Extra care and attention must be taken to only stow compatible freight adjacent to and on top of the involved commodities. Regardless of method of tender, stowing these articles presents problems due to their fragility.

SUBJECT 2023-3, Subject 14—DEFERRED SUBJECT

Liability—The involved commodities are not perishable, hazardous in nature, nor likely to damage other freight. However, these articles do have an increased propensity to damage due to their inherent fragility, when tendered in packages other than boxes or crates, or Package 2442, windows exhibit an even greater susceptibility to damage.

Conclusion

Based on the foregoing analysis, this proposal would cancel item 37375 with reference to item 35540. While the current provisions of item 35540 are reflective of the added handling, stowing and liability considerations associated with transporting windows when tendered in boxes, crates or Package 2442 and the more exacting handling, stowing and liability characteristics when tendered in packages other than boxes, crates or Package 2442, they are no longer reflective of the densities exhibited by windows. Density breaks at 4, 8 and 12 pcf² more accurately reflect the distribution of densities.

The table below relates the information of record to the proposed density groupings, FCDC guideline classes, and the class adjustments to reflect the identified negative handling, stowing and liability considerations when packaged in boxes, crates or Package 2442, and when shipped in packages other than boxes, crates or Package 2442.

Density Group (pcf)	Average Density (pcf)	Class Based on FCDC Density Guidelines	Class Adjustment for Windows Tendered in boxes, crates or Package 2442	Class Adjustment for Windows Not Tendered in boxes, crates or Package 2442
Less than 4	2.51	300	400	500
4 but less than 8	5.44	175	200	250
8 but less than 12	9.70	100	110	125
12 or greater	13.26	85	92.5	100

Note, item 37377 would be canceled with no further application.

² The density provisions include reference to Item (Rule) 170, the inadvertence clause.

SUBJECT 2023-3, Subject 7—DEFERRED SUBJECT

Re: Asphalt Group

Contact: Angela L. Li Telephone — (703) 838-1882 angela.li@nmfta.org

Proponent: Freight Classification Development Council

Present Classification Provisions

Item	Description	Class
15200	ASPHALT GROUP: Articles consist of Asphalt, Pitch or Tar, as described in items subject to this grouping.	
15220	Asphalt (Asphaltum), natural, by-product or petroleum, liquid, other than paint, stain or varnish and not required by the U.S. Department of Transportation to bear a Hazard Class or Hazard Division label or placard, see Note, item 15221, in containers in boxes, or in drums, pails or Package 2080	55
15221	NOTE—Does not apply on materials regulated by the U.S. Department of Transportation as hazardous and required to bear a Hazard Class or Hazard Division label or placard. For classes applicable to such hazardous materials, see provisions elsewhere in this Classification.	
15240	Asphalt (Asphaltum), natural, by-product or petroleum, solid, see Note, item 15242, in packages	55
15242	NOTE—Asphalt or pitch, the melting point of which is 140 degrees or less Fahrenheit, as determined by the Ball and Ring test in water or by the ½ inch Cube test in water, must be in metal cans in boxes or crates, or in steel drums. Asphalt or pitch may be shipped in eight-ply fiber drums, each ply testing not less than 100 pounds (Mullen), total wall thickness not less than ⅛ inch, with metal tops and bottoms, or in 3 ½-gallon nonreusable pails made of 28-gauge steel, covers securely fastened with lugs.	
15260	Pitch, brewers' or pine, in bags, boxes or drums	55
15270	Pitch, lignin, dry, see Note, item 15272, in bags or drums	55
15272	NOTE—Lignin pitch is dehydrated or powdered lignin liquor.	
15280	Pitch, montan, in bags	55
15300	Pitch, NOI, ground, in bags or drums	55
15310	Pitch, NOI, not ground, see Note, item 15242, in boxes, crates or drums, or in bulk in packages	55
15320	Pitch, tall oil, in drums	55
15360	Tar or Pitch, candle, in drums	55
15380	Tar, coal or petroleum, not required by the U.S. Department of Transportation to bear a Hazard Class or Hazard Division label or placard, see Note, item 15221, in metal cans in boxes, or in drums or pails, see Note, item 15382.....	55
15382	NOTE—Will also apply on solid coal or petroleum tar, the melting point of which is over 140 degrees Fahrenheit, as determined by the Ball and Ring test in water or by the ½ inch Cube test in water, when shipped in fiber drums.	
15400	Tar, hardwood, in drums	55

SUBJECT 2023-3, Subject 7—DEFERRED SUBJECT

Present Classification Provisions — Concluded

Item	Description	Class
	ASPHALT GROUP: subject to item 15200	
15420	Tar , NOI, not required by the U.S. Department of Transportation to bear a Hazard Class or Hazard Division label or placard, see Note, item 15221, in metal cans in boxes, or in drums55	55
15440	Tar , pine, in containers in boxes or drums, or metal cans in crates, or in bulk in drums55	55
33660	Asphalt Flooring Compound , NOI, solid (Mastic Blocks).....55	55
33680	Asphalt Flooring Compound , NOI, liquid or paste:	
Sub 1	In containers in boxes or drums60	60
Sub 2	In bulk in drums or in Package 2080.....55	55
33700	Asphalt Paving Blocks:	
Sub 1	Loose60	60
Sub 2	In packages50	50
50295	Compounds , sewer pipe joint, NOI, asphalt, in open top drums, or in cakes weighing each 75 pounds or over, circumference bound with metal and top and bottom coated with clay.....55	55
	GREASE: subject to item 90800	
90950	Lubricating , asphalt base, containing not less than 85 percent asphalt, melting point 225 degrees Fahrenheit or higher, in block form55	55
	ROOFING OR SIDING MATERIALS GROUP: subject to item 170000	
170080	Coating , roofing, having asphalt, pitch, rosin or tar base, other than paint, stain or varnish and not required by the U.S. Department of Transportation to bear a Hazard Class or Hazard Division label or placard, see Note, item 170081, in inner containers in boxes, or in drums or pails55	55
170081	NOTE—Does not apply on materials regulated by the U.S. Department of Transportation as hazardous and required to bear a Hazard Class or Hazard Division label or placard. For classes applicable to such hazardous materials, see provisions elsewhere in this Classification.	

Proposed Classification Provisions

Item	Description	Class
15200	ASPHALT GROUP , etc..... ⇒Cancel; no further application	
15220	Asphalt (Asphaltum) , natural, by-product or petroleum, liquid, other than paint, stain or varnish and not required by the U.S. Department of Transportation to bear a Hazard Class or Hazard Division label or placard, see Note, item 15221, etc..... ⇒Cancel; see item A-NEW	
15221	NOTE—⇒Cancel; see item B-NEW.	
15240	Asphalt (Asphaltum) , natural, by-product or petroleum, solid, etc. ⇒Cancel; see item A-NEW	

SUBJECT 2023-3, Subject 7—DEFERRED SUBJECT

Proposed Classification Provisions — Continued

Item	Description	Class
	ASPHALT GROUP: subject to item 15200	
15242	NOTE—⇒Cancel; no further application.	
15260	Pitch , brewers' or pine, etc	⇒Cancel; see item A-NEW
15270	Pitch , lignin, dry etc	⇒Cancel; see item A-NEW
15272	NOTE—⇒Cancel; no further application.	
15280	Pitch , montan, etc.....	⇒Cancel; see item A-NEW
15300	Pitch , NOI, ground, etc	⇒Cancel; see item A-NEW
15310	Pitch , NOI, not ground, etc.....	⇒Cancel; see item A-NEW
15320	Pitch , tall oil, etc	⇒Cancel; see item A-NEW
15360	Tar or Pitch , candle, etc.....	⇒Cancel; believed to be obsolete
15380	Tar , coal or petroleum, etc.....	⇒Cancel; see item A-NEW
15382	NOTE—⇒Cancel; no further application.	
15400	Tar , hardwood, etc.....	⇒Cancel; see item A-NEW
15420	Tar , NOI, not required by the U.S. Department of Transportation to bear a Hazard Class or Hazard Division label or placard, etc.....	⇒Cancel; see item A-NEW
15440	Tar , pine, etc	⇒Cancel; see item A-NEW
33660	Asphalt Flooring Compound , NOI, solid, (Mastic Blocks)	⇒Cancel; see item A-NEW
33680	Asphalt Flooring Compound , NOI, liquid or paste, etc	⇒Cancel; see item A-NEW
33700	Asphalt Paving Blocks , etc	⇒Cancel; see item A-NEW
50295	Compounds , sewer pipe joint, NOI, asphalt, etc	⇒Cancel; see item A-NEW
	GREASE: subject to item 90800	
90950	Lubricating , asphalt base, containing not less than 85 percent asphalt, melting point 225 degrees Fahrenheit or higher, in block form.....	⇒Cancel; see item A-NEW

SUBJECT 2023-3, Subject 7—DEFERRED SUBJECT

Proposed Classification Provisions — Concluded

Item	Description	Class
	ROOFING OR SIDING MATERIALS GROUP: subject to item 170000	
170080	Coating , roofing, having asphalt, pitch, rosin or tar base, other than paint, stain or varnish and not required by the U.S. Department of Transportation to bear a Hazard Class or Hazard Division label or placard, etc ⇒Cancel; see item A-NEW	
170081	NOTE—⇒Cancel; no further application.	
⇒A-NEW	Asphalt , NOI, other than paint, stain or varnish; or Pitch or Tar , NOI; not required by the U.S. Department of Transportation to bear a Hazard Class or Hazard Division label or placard, see Note, item B-NEW, in bags, boxes, pails or drums, subject to Item 170 and having a density in pounds per cubic foot of:	
Sub 1	Less than 22.5.....	85
Sub 2	22.5 but less than 30.....	65
Sub 3	30 or greater.....	55
⇒B-NEW	NOTE—Does not apply on materials regulated by the U.S. Department of Transportation as hazardous and required to bear a Hazard Class or Hazard Division label or placard. For classes applicable to such hazardous materials, see provisions elsewhere in this Classification.	

Analysis

Introduction

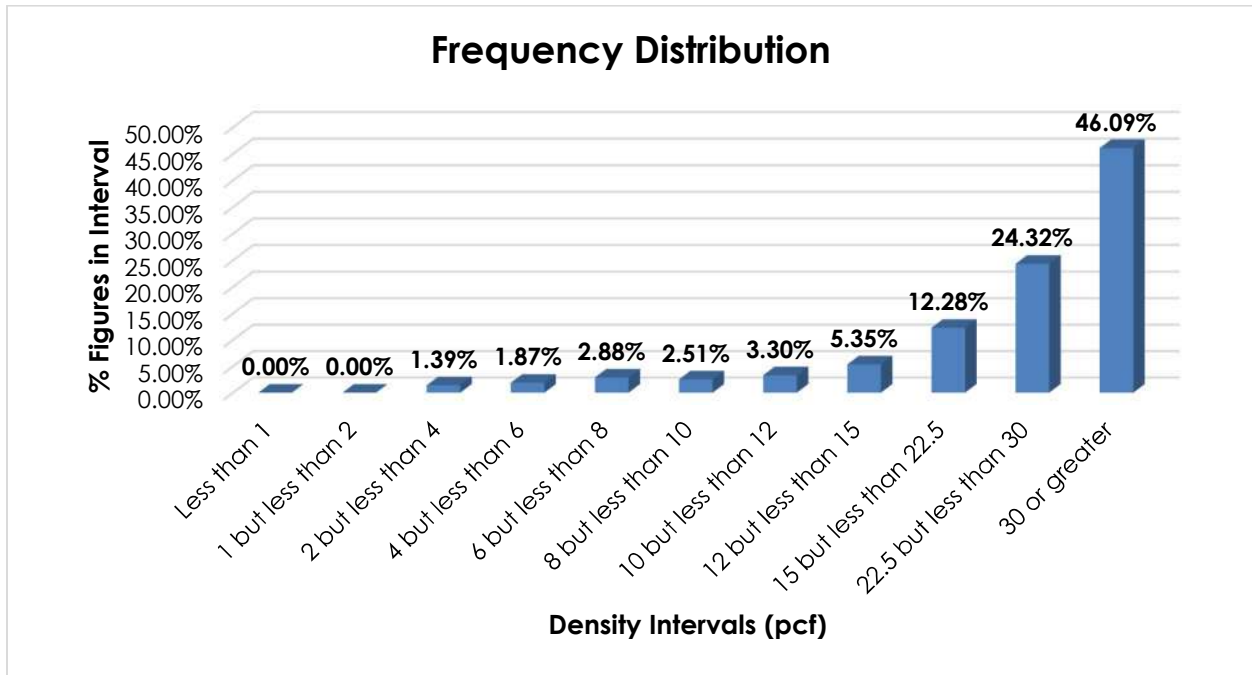
This proposal was initiated to review the transportation characteristics of all items subject to the Asphalt Group. This proposal was initially discussed by the FCDC at its public meeting on October 3, 2023, in Alexandria, VA. During that meeting, comments were made regarding potential interpretation issues with other asphalt-related items. As a result, the FCDC voted to defer disposition of this proposal pending further review.

Transportation Characteristics

Density—The information of record includes 6,916 density observations obtained from the FCDC’s Density Study¹. The densities range from 1.59 to 91.01 pcf, with an overall average density of 29.91 pcf. As shown in the graph on the following page, the density distribution is left-skewed, with over 82% of the figures being 15 pcf or greater. Density breaks at 22.5 and 30 pcf reflect the modality and spread of the distribution.

¹ The Density Study is part of an ongoing effort by the FCDC to collect information on actual shipments across all product categories handled by the LTL industry. Carriers that choose to participate in the Study periodically submit shipment data captured through their respective freight auditing programs. The FCDC uses verifiable data points, identified by NMFC item, that include the weight and the dimensions and/or cube of the shipping unit.

SUBJECT 2023-3, Subject 7—DEFERRED SUBJECT



When the data is evaluated based on the proposed density breaks at 22.5 and 30 pcf, the density ranges and averages shown in the table below emerge.

Density Groups (pcf)	Density Range (pcf)	Average Density (pcf)
Less than 22.5	1.59 – 22.48	13.17
22.5 but less than 30	22.50 – 29.99	26.11
30 or greater	30.00 – 91.01	42.54

Handling, Stowability and Liability—There have been no reports of unusual or significant handling, stowability or liability issues.

Conclusion

Based on the foregoing analysis, all of the items in the Asphalt Group, as well as items 50295, 90950 and 170080, would be canceled with reference to a new item, naming “Asphalt, NOI, other than paint, stain or varnish; or Pitch or Tar, NOI.” The new item would be restricted to asphalt, pitch or tar not regulated as hazardous by the U.S. Department of Transportation, and would provide classes predicated on density, with breaks at 22.5 and 30 pcf². The table on the following page shows the average densities and minimum average density guidelines for each density group.

² The density provisions would include reference to Item (Rule) 170, the inadvertence clause.

SUBJECT 2023-3, Subject 7—DEFERRED SUBJECT

Density Groups (pcf)	Average Density (pcf)	FCDC Minimum Average Density Guideline (pcf)	Class based on FCDC Density Guidelines
Less than 22.5	13.17	12	85
22.5 but less than 30	26.11	22.5	65
30 or greater	42.54	35	55

Item 15360 would be canceled as obsolete.

Note, item 15221 would be canceled with reference to a new Note attendant to the new item. Additionally, Notes, items 15242, 15272, 15382, and 170081 would be canceled with no further application.

The FCDC's Packaging Development Manager has reviewed the proposed minimum packaging requirements, i.e. "in bags, boxes, pails or drums," and determined that they are appropriate for the LTL environment.

NOTICE OF CHANGES TO THE CLASSIFICATION MADE NECESSARY BY LAW,
 BY ORDER OF A REGULATORY BODY, OR
 FOR CLARIFICATION, SIMPLIFICATION OR UNIFORMITY

A. Updating References to Canceled Items

BOILERS, FURNACES, STOVES AND RELATED ARTICLES GROUP: Subject to item 25400

26511 NOTE—Does not apply on solar collectors, solar water heaters or swimming pool heaters. See item 177010 for applicable provisions for solar collectors or solar water heaters, and item 133300 for swimming pool heaters.

26525 **Heaters**, water, tankless, see Note, item ⇒26511, in boxes, subject to Item 170 and having a density in pounds per cubic foot of:

 Sub 1 Less than 8..... 175

 Sub 2 8 or greater 100

FLOOR OR WALL COVERINGS AND RELATED ARTICLES GROUP: subject to item 70500

70965 **Mats, Matting or Tiles**, floor, rubber:

 Sub 1 In boxes or crates, subject to Item 170 and having a density in pounds per cubic foot of:

 Sub 2 Less than 22.570

 Sub 3 22.5 but less than 30.....65

 Sub 4 30 or greater.....55

 Sub 5 In packages other than boxes or crates, see Note, item ⇒70966, subject to Item 170 and having a density in pounds per cubic foot of:

 Sub 6 Less than 22.577.5

 Sub 7 22.5 but less than 30.....70

 Sub 8 30 or greater.....60

⇒70966 NOTE—Articles tendered for shipment on lift truck skids, pallets or platforms must be securely fastened to and must not overhang the edges of the lift truck skid, pallet or platform deck. Exposed surfaces and edges must be protected by packing forms or other packaging materials so as to withstand the normal rigors of the less-than-truckload environment.

176325 **Silica**, colloidal, liquid, ⇒in drums or in containers in boxes55

Comment: Item references are being updated or removed as shown herein.

NOTES

NOTES

NOTES