

**SUBJECT 14**

**Re:** Windows, bank drive-up or walk-up

**Contact:** Angela L. Li Telephone — (703) 838-1882 angela.li@nmfta.org

**Proponent:** Freight Classification Development Council

**Present Classification Provisions**

| Item  | Description  | Class |
|-------|--|-------|
|       | <b>BUILDING METALWORK GROUP:</b> subject to item 35600   |       |
| 37375 | <b>Windows</b> , bank drive-up or walk-up, steel, see Note, item 37377, in boxes or crates.....  | 175   |
| 37377 | NOTE—Applies only on flush or bay types, with clerks' working counters or tops, with or without electrically or manually operated drawers, with or without glass, with or without electrical wiring, or lighting, heating, defrosting or communications speaker units, but not including other electrical communications or visual apparatus nor pneumatic transmission apparatus nor cameras. |       |

**Proposed Classification Provisions**

| Item  | Description   | Class                 |
|-------|---|-----------------------|
|       | <b>BUILDING MATERIALS, MISCELLANEOUS, GROUP:</b> subject to item 33570  |                       |
| ⇒NEW  | <b>Windows</b> , service or transaction, metal, in boxes or crates, subject to Item 170 and having a density in pounds per cubic foot of: |                       |
| Sub 1 | Less than 5.....  | 200                   |
| Sub 2 | 5 or greater .....  | 150                   |
|       | <b>BUILDING METALWORK GROUP:</b> subject to item 35600  |                       |
| 37375 | <b>Windows</b> , bank drive-up or walk-up, steel, etc .....   | ⇒Cancel; see item NEW |
| 37377 | NOTE—⇒Cancel; no further application.   |                       |

**Analysis**

**Introduction**

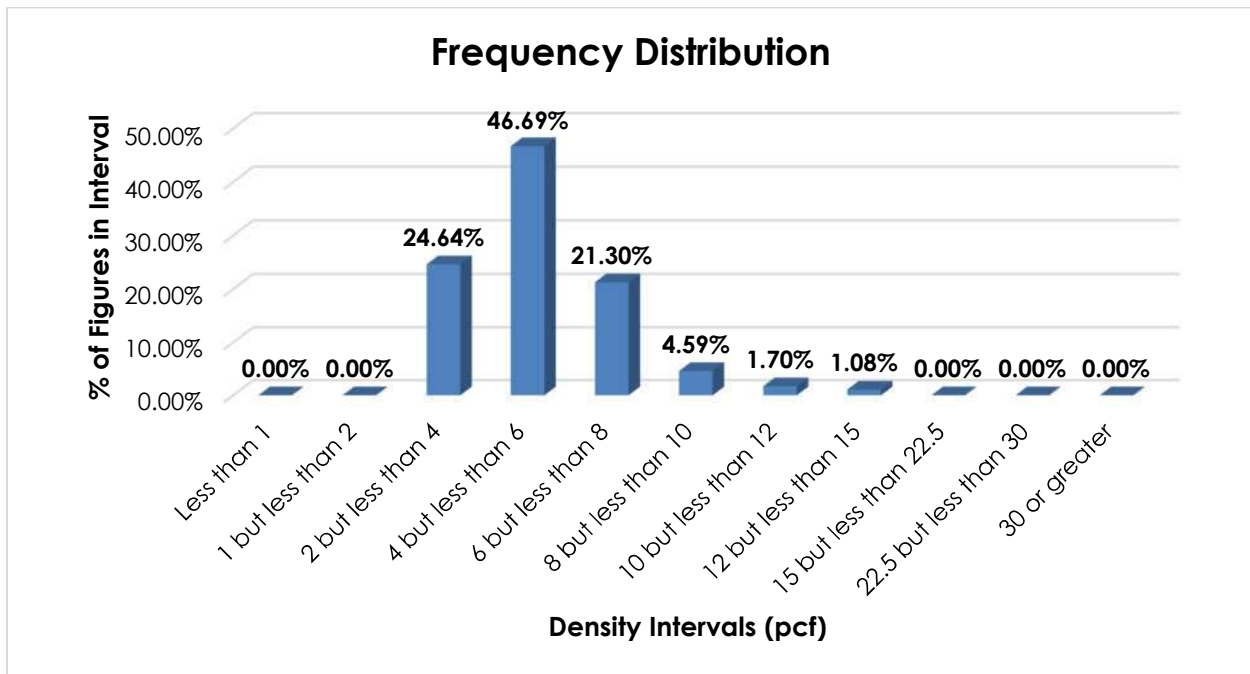
This proposal responds to the summation of Research Project 1519, which sought to review the transportation characteristics of steel bank drive-up or walk-up windows, as named in item 37375. During the course of research, the project was expanded to include other types of service or transactional windows. Pictures of some of the involved commodities are shown on the following page.

SUBJECT 14



Transportation Characteristics

**Density**—The information of record includes 3,052 density observations submitted by a carrier and obtained from the FCDC’s Density Study<sup>1</sup>. The densities range from 2.32 to 13.50 pcf, with an overall average density of 5.29 pcf. As shown in the graph below, the density distribution is right-skewed, with over 92% of the figures between 2 and 8 pcf. A density break at 5 pcf reflects the modality and spread of the distribution.



<sup>1</sup> The Density Study is part of an ongoing effort by the FCDC to collect information on actual shipments across all product categories handled by the LTL industry. Carriers that choose to participate in the Study periodically submit shipment data captured through their respective freight auditing programs. The FCDC uses verifiable data points, identified by NMFC item, that include the weight and the dimensions and/or cube of the shipping unit.

**SUBJECT 14**

When the data is evaluated based on the proposed density break at 5 pcf, the density ranges and averages shown in the table below emerge.

| Density Groups (pcf) | Density Range (pcf) | Average Density (pcf) |
|----------------------|---------------------|-----------------------|
| Less than 5          | 2.32 – 4.99         | 4.01                  |
| 5 or greater         | 5.00 – 13.50        | 6.82                  |

**Handling, Stowability and Liability**—There have been no reports of unusual or significant handling, stowability or liability issues.

**Conclusion**

Based on the foregoing analysis, this proposal would cancel item 37375 with reference to a new item, naming “Windows, service or transaction, metal,” with classes predicated on a density break at 5 pcf<sup>2</sup>. The table below relates the information of record to the proposed density groupings and FCDC density guidelines.

| Density Groups (pcf) | Average Density (pcf) | FCDC Minimum Average Density Guideline (pcf) | Class based on FCDC Density Guidelines |
|----------------------|-----------------------|--|--|
| Less than 5          | 4.01                  | 4  | 200                                    |
| 5 or greater         | 6.82                  | 6  | 150                                    |

Note, item 37377 would be canceled with no further application.

The FCDC's Packaging Development Manager has reviewed the proposed minimum packaging requirements, i.e. “in boxes or crates,” and determined that they are appropriate for the LTL environment.

<sup>2</sup> The density provisions would include reference to Item (Rule) 170, the inadvertence clause.