

**SUBJECT 13**

**Re:** Incinerators, garbage or offal — Items 26600 and 26620

**Contact:** Lanae C. Peterson Telephone — (703) 838-1810 peterson@nmfta.org

**Proponent:** Freight Classification Development Council

**Present Classification Provisions**

Item	Description	Class
	<b>BOILERS, FURNACES, STOVES AND RELATED ARTICLES GROUP:</b> subject to item 25400	
26600	<b>Incinerators</b> , garbage, offal or rubbish, steel, lined with refractory material, with or without gas or oil burners, steel skid mounted construction, weighing each not less than 3,000 pounds .....	65
26620	<b>Incinerators</b> , garbage or offal, NOI, cast or malleable iron, or plate or sheet iron combined with cast or malleable iron, with or without firebricks:	
Sub 1	SU .....	70
Sub 2	KD .....	60

**Proposed Classification Provisions**

Item	Description	Class
	<b>BOILERS, FURNACES, STOVES AND RELATED ARTICLES GROUP:</b> subject to item 25400	
⇒NEW	<b>Incinerators</b> , garbage, offal or rubbish, NOI .....	70
26600	<b>Incinerators</b> , garbage, offal or rubbish, steel, lined with refractory material, with or without gas or oil burners, steel skid mounted construction, weighing each not less than 3,000 pounds..... ⇒Cancel; see item NEW	
26620	<b>Incinerators</b> , garbage or offal, NOI, cast or malleable iron, or plate or sheet iron combined with cast or malleable iron, with or without firebricks:..... ⇒Cancel; see item NEW	

**Analysis**

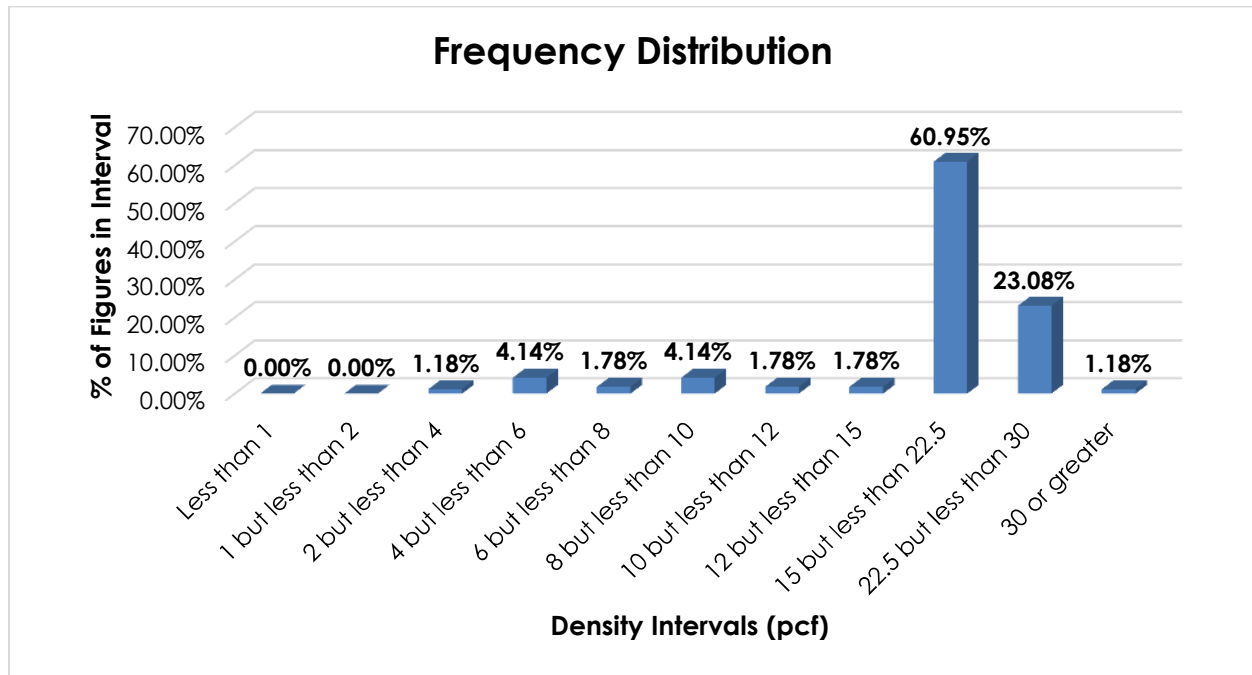
**Introduction**

This proposal addresses indications that shipments of incinerators, as named in items 26600 and 26620, exhibit transportation characteristics inconsistent with the currently assigned classes.

SUBJECT 13

Transportation Characteristics

**Density**—The information of record includes 169 density observations obtained from the FCDC’s Density Study<sup>1</sup>. The densities range from 3.80 to 32.59 pcf, with an overall average density of 18.68 pcf. As shown in the graph below, the densities are left-skewed, with over 84% of the figures between 15 and 30 pcf.



**Handling, Stowability and Liability**—There have been no reports of unusual or significant handling, stowability or liability issues.

Conclusion

Based on the foregoing analysis, this proposal would cancel items 26600 and 26620 with reference to new item, naming “Incinerators, garbage, offal or rubbish, NOI,” at class 70.

<sup>1</sup> The Density Study is part of an ongoing effort by the FCDC to collect information on actual shipments across all product categories handled by the LTL industry. Carriers that choose to participate in the Study periodically submit shipment data captured through their respective freight auditing programs. The FCDC uses verifiable data points, identified by NMFC item, that include the weight and the dimensions and/or cube of the shipping unit.