

**SUBJECT 11**

**Re:** Casket or Coffin Hardware, Lowering Devices or Display Devices

**Contact:** Lanae C. Peterson Telephone — (703) 838-1810 peterson@nmfta.org

**Proponent:** Freight Classification Development Council

**Present Classification Provisions**

Item	Description	Class
	<b>BURIAL CASE GROUP:</b> subject to item 38800	
38810	<b>Burial Case or Casket Carriages, Pedestals or Truck Biers,</b> undertakers', in boxes or crates.....	125
38820	<b>Burial Case or Casket Handles,</b> in boxes or drums .....	85
38830	<b>Burial Case or Casket Handle Stampings or Tubes,</b> steel, unfinished, in boxes or drums.....	70
38860	<b>Burial Case or Casket Lowering Devices:</b>	
Sub 1	SU, in boxes or crates.....	150
Sub 2	KD, in boxes.....	100
38870	<b>Burial Case or Casket Ornaments,</b> metal or composition, <b>Plates or Ornamental Screws,</b> in boxes or drums.....	85
38880	<b>Burial Case or Casket Placers,</b> KD, in boxes.....	100
	<b>HARDWARE GROUP:</b> subject to item 92900	
95190	<b>Hardware, viz.:</b>	
	<b>Hardware,</b> NOI;	
	<b>Hose Clamps;</b>	
	In boxes, crates, drums or Package 783, subject to Item 170 and having a density in pounds per cubic foot of:	
Sub 1	Less than 1 .....	400
Sub 2	1 but less than 2.....	300
Sub 3	2 but less than 4.....	250
Sub 4	4 but less than 6.....	175
Sub 5	6 but less than 8.....	125
Sub 6	8 but less than 10.....	100
Sub 7	10 but less than 12.....	92.5
Sub 8	12 but less than 15.....	85
Sub 9	15 but less than 22.5.....	70
Sub 10	22.5 but less than 30.....	65
Sub 11	30 or greater.....	60

SUBJECT 11

Present Classification Provisions — Continued

Item	Description	Class
	<b>MACHINERY GROUP:</b> subject to item 114000	
133300	<b>Machinery or Machines, NOI, or Machinery or Machine Parts, NOI:</b>	
Sub 1	In boxes, crates or Packages 107, 1082, or 2107, subject to Item 170 and having a density in pounds per cubic foot of:	
Sub 2	Less than 5 .....	250
Sub 3	5 but less than 10 .....	125
Sub 4	10 but less than 15 .....	85
Sub 5	15 or greater.....	65
Sub 6	On skids or in packages other than boxes, crates or Packages 107, 1082 or 2107, subject to Item 170 and having a density in pounds per cubic foot of:	
Sub 7	Less than 5 .....	400
Sub 8	5 but less than 10 .....	175
Sub 9	10 but less than 15 .....	100
Sub 10	15 or greater.....	77.5
	<b>STANDS:</b> subject to item 178350	
178690	<b>Stands, viz.:</b>	
	<b>Christmas Tree Stands;</b>	
	<b>Clothes or Luggage Stands;</b>	
	<b>Stanchions,</b> pedestrian traffic or crowd control, with or without rope or retractable belt;	
	<b>Stands, NOI;</b>	
	In packages, subject to Item 170 and having a density in pounds per cubic foot of:	
Sub 1	Less than 1 .....	400
Sub 2	1 but less than 2.....	300
Sub 3	2 but less than 4.....	250
Sub 4	4 but less than 6.....	175
Sub 5	6 but less than 8.....	125
Sub 6	8 but less than 10.....	100
Sub 7	10 but less than 12.....	92.5
Sub 8	12 but less than 15.....	85
Sub 9	15 but less than 22.5.....	70
Sub 10	22.5 but less than 30.....	65
Sub 11	30 or greater.....	60

SUBJECT 11

Present Classification Provisions — Concluded

Item	Description	Class
	<b>VEHICLES, OTHER THAN SELF-PROPELLED:</b> subject to item 188500	
188560	<b>Barrows, Carts, Trucks, Wagons or Wheelbarrows,</b> NOI, hand, in packages, see Note, item 188561, subject to Item 170 and having a density in pounds per cubic foot of:	
Sub 1	Less than 1 .....	400
Sub 2	1 but less than 2 .....	300
Sub 3	2 but less than 4 .....	250
Sub 4	4 but less than 6 .....	175
Sub 5	6 but less than 8 .....	125
Sub 6	8 but less than 10 .....	100
Sub 7	10 but less than 12 .....	92.5
Sub 8	12 but less than 15 .....	85
Sub 9	15 but less than 22.5 .....	70
Sub 10	22.5 but less than 30 .....	65
Sub 11	30 or greater .....	60
188561	NOTE—Not Involved.	

Proposed Classification Provisions

Item	Description	Class
	<b>BURIAL CASE GROUP:</b> subject to item 38800	
38810	<b>Burial Case or Casket Carriages, Pedestals or Truck Biers,</b> etc ..... ⇒Cancel; see items 178690 and 188560	
38820	<b>Burial Case or Casket Handles,</b> etc ..... ⇒Cancel; see item 95190	
38830	<b>Burial Case or Casket Handle Stampings or Tubes,</b> steel, unfinished, etc..... ⇒Cancel; see item 95190	
38860	<b>Burial Case or Casket Lowering Devices:</b> etc ..... ⇒Cancel; see item 133300	
38870	<b>Burial Case or Casket Ornaments,</b> metal or composition, <b>Plates or Ornamental Screws,</b> etc ..... ⇒Cancel; see item 95190	
38880	<b>Burial Case or Casket Placers,</b> KD, etc ..... ⇒Cancel; see item 95190	

SUBJECT 11

Proposed Classification Provisions — Continued

Item	Description	Class
	<b>HARDWARE GROUP:</b> subject to item 92900	
95190	<b>Hardware, viz.:</b> ⇒Casket or Coffin Hardware, NOI; <b>Hardware, NOI;</b> <b>Hose Clamps;</b> In boxes, crates, drums or Package 783, subject to Item 170 and having a density in pounds per cubic foot of:	
Sub 1	Less than 1 .....	400
Sub 2	1 but less than 2.....	300
Sub 3	2 but less than 4.....	250
Sub 4	4 but less than 6.....	175
Sub 5	6 but less than 8.....	125
Sub 6	8 but less than 10.....	100
Sub 7	10 but less than 12.....	92.5
Sub 8	12 but less than 15.....	85
Sub 9	15 but less than 22.5.....	70
Sub 10	22.5 but less than 30.....	65
Sub 11	30 or greater.....	60
	<b>MACHINERY GROUP:</b> subject to item 114000	
133300	<b>Machinery or Machines, NOI, or Machinery or Machine Parts, NOI:</b> Sub 1 In boxes, crates or Packages 107, 1082, or 2107, subject to Item 170 and having a density in pounds per cubic foot of:	
Sub 2	Less than 5 .....	250
Sub 3	5 but less than 10 .....	125
Sub 4	10 but less than 15 .....	85
Sub 5	15 or greater.....	65
Sub 6	On skids or in packages other than boxes, crates or Packages 107, 1082 or 2107, subject to Item 170 and having a density in pounds per cubic foot of:	
Sub 7	Less than 5 .....	400
Sub 8	5 but less than 10 .....	175
Sub 9	10 but less than 15 .....	100
Sub 10	15 or greater.....	77.5

SUBJECT 11

Proposed Classification Provisions — Concluded

Item	Description	Class
	<b>STANDS:</b> subject to item 178350	
178690	<b>Stands, viz.:</b> ⇒ <b>Casket or Coffin Pedestals, or Biers, NOI;</b> <b>Christmas Tree Stands;</b> <b>Clothes or Luggage Stands;</b> <b>Stanchions,</b> pedestrian traffic or crowd control, with or without rope or retractable belt; <b>Stands, NOI;</b> In packages, subject to Item 170 and having a density in pounds per cubic foot of:	
Sub 1	Less than 1 .....	400
Sub 2	1 but less than 2.....	300
Sub 3	2 but less than 4.....	250
Sub 4	4 but less than 6.....	175
Sub 5	6 but less than 8.....	125
Sub 6	8 but less than 10.....	100
Sub 7	10 but less than 12.....	92.5
Sub 8	12 but less than 15.....	85
Sub 9	15 but less than 22.5.....	70
Sub 10	22.5 but less than 30.....	65
Sub 11	30 or greater.....	60
	<b>VEHICLES, OTHER THAN SELF-PROPELLED:</b> subject to item 188500	
188560	<b>Barrows, Carts, Trucks, Wagons or Wheelbarrows, NOI,</b> hand, in packages, see Note, item 188561, subject to Item 170 and having a density in pounds per cubic foot of:	
Sub 1	Less than 1 .....	400
Sub 2	1 but less than 2 .....	300
Sub 3	2 but less than 4 .....	250
Sub 4	4 but less than 6 .....	175
Sub 5	6 but less than 8 .....	125
Sub 6	8 but less than 10 .....	100
Sub 7	10 but less than 12 .....	92.5
Sub 8	12 but less than 15 .....	85
Sub 9	15 but less than 22.5 .....	70
Sub 10	22.5 but less than 30 .....	65
Sub 11	30 or greater .....	60
188561	NOTE—No Change.	

**SUBJECT 11**

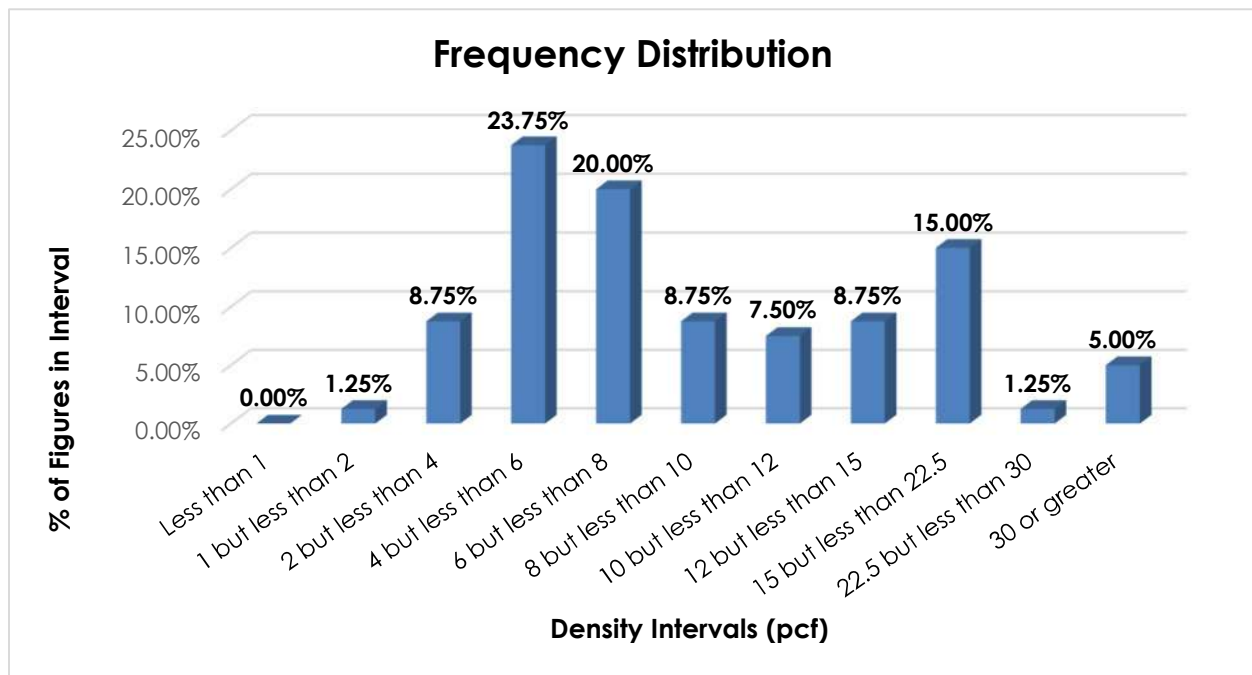
**Analysis**

**Introduction**

Numerous items in the Burial Case Group name particular types of casket or coffin hardware, lowering devices or display devices, and these provisions can be difficult to interpret, apply or verify. The transportation characteristics below relate to the items subject to the Burial Case Group as shown in the Present Classification Provisions herein.

**Transportation Characteristics**

**Density**—The information of record includes 80 density observations obtained from the FCDC's Density Study<sup>1</sup>. The densities range from 1.76 to 40.64 pcf, with an overall average density of 10.71 pcf. As shown in the graph below, the densities are widely distributed throughout the range.



<sup>1</sup> The Density Study is part of an ongoing effort by the FCDC to collect information on actual shipments across all product categories handled by the LTL industry. Carriers that choose to participate in the Study periodically submit shipment data captured through their respective freight auditing programs. The FCDC uses verifiable data points, identified by NMFC item, that include the weight and the dimensions and/or cube of the shipping unit.

## SUBJECT 11

**Handling, Stowability and Liability**—There have been no reports of unusual or significant handling, stowability or liability issues.

### Conclusion

Based on the foregoing analysis, items 38820, 38830, 38870, and 38880 would be canceled with reference to the full-scale, density-based provisions of item 95190<sup>2</sup>. Concurrently, this proposal would amend the “viz.” listing in item 95190 to include, “Casket or Coffin Hardware, NOI.”

Item 38810 would be canceled with reference to the full-scale density-based provisions of items 178690<sup>2</sup> and 188560<sup>2</sup>, depending on the product's representation and intended use.

Item 38860 would be canceled with reference to item 133300<sup>3</sup>.

---

<sup>2</sup> Items 95190, 178690 and 188560 provide the FCDC's standard 11-subprovision density scale, which includes reference to Item (Rule) 170, the inadvertence clause.

<sup>3</sup> The density provisions of item 133300 include reference to Item (Rule) 170, the inadvertence clause.