

SUBJECT 10

Re: Burial Cases, Caskets, Coffins, Grave Vaults or Body Transfer Containers

Contact: Lanae C. Peterson Telephone — (703) 838-1810 peterson@nmfta.org

Proponent: Freight Classification Development Council

Present Classification Provisions

| Item | Description | Class |
|--------|-----------------------------------------------------------------------------------------------------------------------------------------------------------------------------------------------------------------------------------------------------------------------|-------|
| | BURIAL CASE GROUP: subject to item 38800 | |
| 38805 | Boxes or Containers , for shipping uncasketed remains, KD, in bundles: | |
| Sub 1 | Fiberboard..... | 110 |
| Sub 2 | Wood, with fiberboard covering..... | 70 |
| 38808 | Boxes or Trays , cremation, fiberboard or fiberboard and wood combined, KD, in bundles..... | 110 |
| 38850 | Burial Case or Casket Linings , metal, in boxes or crates..... | 150 |
| 38890 | Burial Case Shipping Boxes , NOI; | |
| Sub 1 | SU | 300 |
| Sub 2 | KD, in packages..... | 100 |
| 38900 | Burial Cases (Caskets or Coffins) or Casket Shells , NOI, SU, in boxes or Packages 170 or 2222..... | 200 |
| 38910 | Burial Cases (Caskets or Coffins) , SU, wooden, in the white or stained, not further finished: | |
| Sub 1 | Wrapped | 125 |
| Sub 2 | In boxes or wrapped in crates..... | 100 |
| 38920 | Burial Vault or Burial Case Shipping Boxes , wood, metal lined or faced, KD, in packages..... | 85 |
| 38930 | Casket or Coffin Material , wooden, in the white, KD, consisting of sides, ends, corners, top frames or panels, built-up but requiring further mitring, planing or sawing operations before becoming completed casket or coffin parts, in boxes or crates..... | 70 |
| 38935 | Caskets or Coffins , corrugated fiberboard, SU, with or without handles, wrapped or in fiberboard sleeves | 300 |
| 38940 | Caskets or Coffins , KD, wooden, in the white, in packages..... | 70 |
| 38963 | Containers , body transfer shipping (Zeigler-Type Shippers), metal, SU..... | 85 |
| 38970 | Grave Vaults: | |
| Sub 1 | Asphalt composition, cement or concrete: | |
| Sub 2 | SU..... | 70 |
| Sub 3 | KD..... | 50 |
| Sub 4 | Cast iron, wrapped and crated..... | 70 |
| Sub 5 | Plastic or composition, NOI: | |
| Sub 6 | Not nested, in boxes or crates; or nested in nests of 3 or 4, bases not nested, banded to pallets | 250 |
| Sub 7 | Nested in nests of 5 or more, bases not nested, banded to pallets.... | 150 |
| Sub 8 | Slate or stone, natural: | |
| Sub 9 | SU, in boxes or crates..... | 70 |
| Sub 10 | KD..... | 50 |

SUBJECT 10

Present Classification Provisions — Concluded

| Item | Description | Class |
|-------|----------------------------------------------------|-------|
| | BURIAL CASE GROUP: subject to item 38800 | |
| 39030 | Grave Vaults or Burial Case Shipping Boxes: | |
| 39040 | Iron or steel | |
| Sub 1 | 12 gauge or thicker | 100 |
| Sub 2 | 13 gauge or thinner: | |
| Sub 3 | SU | 125 |
| Sub 4 | KD, in packages | 70 |
| 39050 | Metal, NOI, in boxes or crates | 150 |

Package 170

In 3-piece doublewall corrugated fiberboard boxes, the fiberboard conforming to Secs. 2 and 3 of Item 222 for boxes testing not less than 275 pounds. Box must consist of body and two flanged caps with not less than 6-inch flanges fitting over top and bottom of body. Inner packing must consist of four corrugated doublewall corner pieces, one at each bottom corner, scored, slotted and folded to provide four thicknesses on the ends, sides and bottom; two doublewall corrugated creased sheets running across the width, one at each end: four singlewall corrugated creased sheets, centered, with one running across the width at top, one at bottom, and one on each side running the depth, the four forming a complete band around the center not less than 10 inches wide. Inner packing must maintain not less than 1 1/4 inches clearance on all sides and top and 1 inch on the bottom. All finished surfaces must be adequately protected against abrasion. Box must be closed by not less than five steel straps not less than 1/2 inch x 0.015 inch. Box must not exceed 150 united inches. Gross weight must not exceed 275 pounds.

Package 2222

In container consisting of doublewall telescope cover resting on and securely strapped to wood pallet with not less than 3 steel bands 5/8 inch wide.

Telescope cover to be made of doublewall corrugated fiberboard testing not less than 450 pounds with a minimum combined weight of facings of 207 pounds, slotted to provide double thickness extending along sides from corners a distance equal to the depth of cover. Additional sheets of doublewall corrugated fiberboard testing not less than 350 pounds, full width of container, must be laminated to each end of telescope cover extending full depth and a minimum of 45 percent of the length of top panel from each end. The laminated area must be glued over not less than 80 percent of the area of contact.

Product must be securely attached and located on wood base to maintain one inch clearance from container on ends and sides. Base to be made of not less than 4 pieces of 3/4 inch thick lumber having a cross-sectional area of not less than 9 3/4 square inches.

Top clearance to be not less than 3 inches.

All surfaces subject to abrasion must be protected with nonabrasive material.

Maximum gross weight not to exceed 375 pounds.

SUBJECT 10

Proposed Classification Provisions

| Item | Description | Class |
|-------|---------------------------------------------------------------------------------------------------------------------------------------------------------------------------------------------------------------------------------------------------------|----------------------------------|
| | BURIAL CASE GROUP: subject to item 38800 | |
| 38805 | Boxes or Containers , for shipping uncasketed remains, KD, etc | ⇒Cancel; see item NEW |
| 38808 | Boxes or Trays , cremation, fiberboard or fiberboard and wood combined, KD, etc | ⇒Cancel; see item NEW |
| 38850 | Burial Case or Casket Linings , metal, etc..... | ⇒Cancel; believed to be obsolete |
| 38890 | Burial Case Shipping Boxes , NOI, etc | ⇒Cancel; see item NEW |
| 38900 | Burial Cases (Caskets or Coffins) or Casket Shells , NOI, etc | ⇒Cancel; see item NEW |
| 38910 | Burial Cases (Caskets or Coffins) , SU, wooden, in the white or stained, not further finished, etc | ⇒Cancel; see item NEW |
| 38920 | Burial Vault or Burial Case Shipping Boxes , wood, metal lined or faced, KD, in packages, etc | ⇒Cancel; see item NEW |
| 38930 | Casket or Coffin Material , wooden, in the white, KD, consisting of sides, ends, corners, top frames or panels, built-up but requiring further mitering, planing or sawing operations before becoming completed casket or coffin parts, etc..... | ⇒Cancel; see item NEW |
| 38935 | Caskets or Coffins , corrugated fiberboard, SU, with or without handles, wrapped or in fiberboard sleeves, etc | ⇒Cancel; see item NEW |
| 38940 | Caskets or Coffins , KD, wooden, in the white, etc | ⇒Cancel; see item NEW |
| 38963 | Containers , body transfer shipping (Zeigler-Type Shippers), metal, SU..... | ⇒Cancel; see item NEW |
| 38970 | Grave Vaults , etc | ⇒Cancel; see item NEW |
| 39030 | Grave Vaults or Burial Case Shipping Boxes , | ⇒Cancel; see item NEW |
| 39040 | Iron or steel, etc | ⇒Cancel; see item NEW |
| 39050 | Metal, NOI, etc | ⇒Cancel; see item NEW |

SUBJECT 10

Proposed Classification Provisions — Concluded

| Item | Description | Class |
|-------|----------------------------------------------------------------------------------------------------------------------------------------------------------------------------------------------------------------------------------------------------|-------|
| ⇒NEW | Caskets or Coffins, NOI; Boxes, Containers or Trays or Containers, burial, cremation or body transfer, NOI; or Grave Vaults, NOI; in boxes or crates, subject to Item 170 and having a density in pounds per cubic foot of: | |
| Sub 1 | Less than 4..... | 250 |
| Sub 2 | 4 or greater | 150 |

Package 170

⇒Cancel; no further application.

Package 2222

⇒Cancel; no further application.

Analysis

Introduction

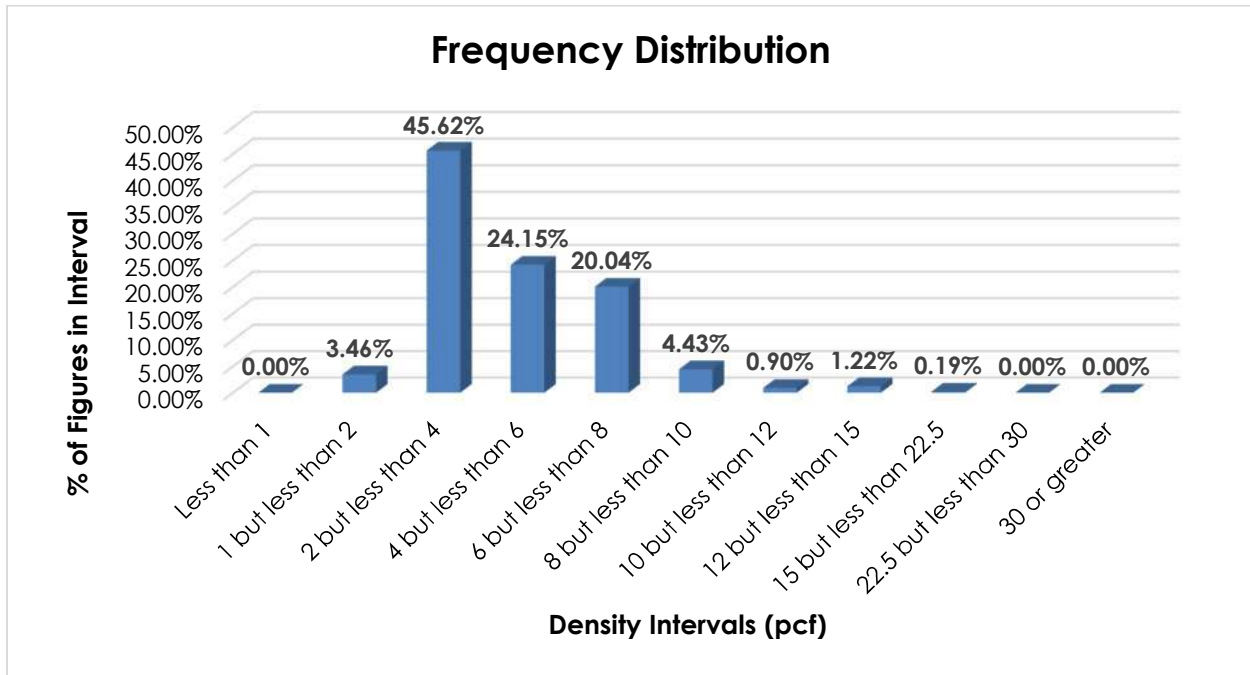
Numerous items in the Burial Case Group name particular types of burial cases, caskets, coffins, grave vaults or body transfer containers, and these provisions can be difficult to interpret, apply or verify. The transportation characteristics below relate to the items subject to the Burial Case Group, as shown in the Present Classification Provisions herein.

Transportation Characteristics

Density—The information of record includes 5,349 density observations obtained from the FCDC’s Density Study¹. The densities range from 1.02 to 21.30 pcf, with an overall average density of 4.72 pcf. As shown in the graph on the following page, the density distribution is right-skewed and heavily clustered between 2 and 8 pcf. A single density break at 4 pcf addresses the spread and modality of the distribution.

¹ The Density Study is part of an ongoing effort by the FCDC to collect information on actual shipments across all product categories handled by the LTL industry. Carriers that choose to participate in the Study periodically submit shipment data captured through their respective freight auditing programs. The FCDC uses verifiable data points, identified by NMFC item, that include the weight and the dimensions and/or cube of the shipping unit.

SUBJECT 10



When the data is evaluated based on the proposed density break at 4 pcf, the density ranges and averages shown in the table below emerge.

| Density Groups (pcf) | Density Range (pcf) | Average Density (pcf) |
|----------------------|---------------------|-----------------------|
| Less than 4 | 1.02 – 3.99 | 3.09 |
| 4 or greater | 4.00 – 21.30 | 6.29 |

Handling, Stowability and Liability—There have been no reports of unusual or significant handling, stowability or liability issues.

Conclusion

Based on the foregoing analysis, items 38805, 38808, 38890, 38900, 38910, 38920, 38930, 38935, 38940, 38963, 38970, 39030, 39040 and 39050 would be canceled with reference to a new item, naming “Caskets and Coffins, NOI; Boxes, Trays or Containers, burial, cremation or body transfer, NOI; or Grave Vaults, NOI.” The new item would assign classes predicated on density, with a single break at 4 pcf². The table below relates the information of record to the proposed density groupings and FCDC guidelines.

| Density Groups (pcf) | Average Density (pcf) | FCDC Minimum Average Density Guideline (pcf) | Class Based on FCDC Density Guidelines |
|----------------------|-----------------------|----------------------------------------------|----------------------------------------|
| Less than 4 | 3.09 | 3 | 250 |
| 4 or greater | 6.29 | 6 | 150 |

Item 38850 would be canceled as obsolete.

² The density provisions would include reference to Item (Rule) 170, the inadvertence clause.

SUBJECT 10

The minimum packaging requirements would ensure that freight is adequately protected and can be handled and stowed in a manner that is reasonably safe and practicable so as to withstand the normal rigors of the less-than-truckload environment. Additionally, Packages 170 and 2222 would be canceled with no further application.