

SUBJECT 9

Re: Grain Products Group

Contact: Angela L. Li Telephone — (703) 838-1882 angela.li@nmfta.org

Proponent: Freight Classification Development Council

Present Classification Provisions

Item	Description	Class
89230*	Grain , see Note, item 89231, viz.: Barley; Corn; Grain , NOI; Oats; Rye; Wheat; In bags, boxes or drums	65
89231	NOTE—Does not apply on grain represented as 'seed.' For applicable provisions, see item 173720.	
89300	GRAIN PRODUCTS GROUP: see Note, item 89314	
89314	NOTE—Grain products in bags each weighing less than 10 pounds will not be accepted individually, but must be enclosed in bags, boxes or drums.	
89330	Barley , pearled, in inner containers in boxes, or in bulk in bags or drums	50
89350	Barley or Grain Skimmings , malthouse, in bags	50
89370	Bran , NOI, in inner containers in boxes, or in bulk in bags or drums	50
89390	Feed , gluten, in bags or drums	50
89410	Grain Feed , NOI, other than prepared animal, fish or poultry feed, in drums or in cloth or paper bags	50
89470	Grain Screenings , in bags or drums	50
89490	Grains , spent, dried, in bags or drums	50
89500	Grains , spent, wet, in bags or drums	50
89530	Grits , bakers' or brewers', in bags, boxes or drums:	
Sub 1	Flaked	150
Sub 2	Granulated or refined	50
89550	Grits , NOI, Groats or Hominy , other than canned or flaked hominy, in bags, boxes or drums	50
89570	Hulls , barley, buckwheat or oat, in bags or drums	50
89590	Malt , in bags or drums	50
89630	Malt Sprouts , in bags	50
89690	Middlings or Shorts , in drums or in cloth or paper bags	50
89700	Millet , hulled, in bags or boxes	50
89730	Oat Clippings , in bags	50
89750	Rye Grain , roasted, whole, crushed, granulated or ground, NOI, in bags, boxes or drums	65

*Published in Supplement 2 to NMF 100-AW, effective August 5, 2023.

SUBJECT 9

Proposed Classification Provisions

Item	Description	Class
89230	Grain or Grain Products , see Note, item 89231, viz.: Barley; Corn; ⇒ Feed , NOI, other than prepared animal, fish or poultry feed; ⇒ Grain , NOI; ⇒ Grain or Grain Products , NOI; ⇒ Grits , NOI; ⇒ Malt; Oats; Rye; Wheat;	
	In bags, boxes or drums65	
89231	NOTE—No Change.	
89300	GRAIN PRODUCTS GROUP , etc	⇒ Cancel; no further application
89314	NOTE—Cancel; no further application.	
89330	Barley , pearled, etc	⇒ Cancel; see Item 89230
89350	Barley or Grain Skimmings , malthouse, etc	⇒ Cancel; see Item 89230
89370	Bran , NOI, etc	⇒ Cancel; see Item 89230
89390	Feed , gluten, etc	⇒ Cancel; see Item 89230
89410	Grain Feed , NOI, etc	⇒ Cancel; see Item 89230
89470	Grain Screenings , etc	⇒ Cancel; see Item 89230
89490	⊗ Grains , spent, dried, etc	⇒ Cancel; see item 89230 and provisions otherwise applicable
89500	Grains , spent, wet, etc	⇒ Cancel; see Item 89230
89530	Grits , bakers' or brewers', etc	⇒ Cancel; see Item 89230
89550	Grits , NOI, Groats or Hominy , etc	⇒ Cancel; see Item 89230
89570	Hulls , barley, buckwheat or oat, etc	⇒ Cancel; see Item 89230
89590	Malt , etc	⇒ Cancel; see Item 89230

SUBJECT 9

Proposed Classification Provisions — Concluded

Item	Description	Class
	GRAIN PRODUCTS GROUP: subject to item 89300	
89630	Malt Sprouts , etc.....	⇒Cancel; see Item 89230
89690	Middlings or Shorts , etc.....	⇒Cancel; see Item 89230
89700	Millet , hulled, etc.....	⇒Cancel; see Item 89230
89730	Oat Clippings , etc.....	⇒Cancel; see Item 89230
89750	Rye Grain , roasted, whole, crushed, granulated or ground, etc.....	⇒Cancel; see Item 89230

Analysis

Introduction

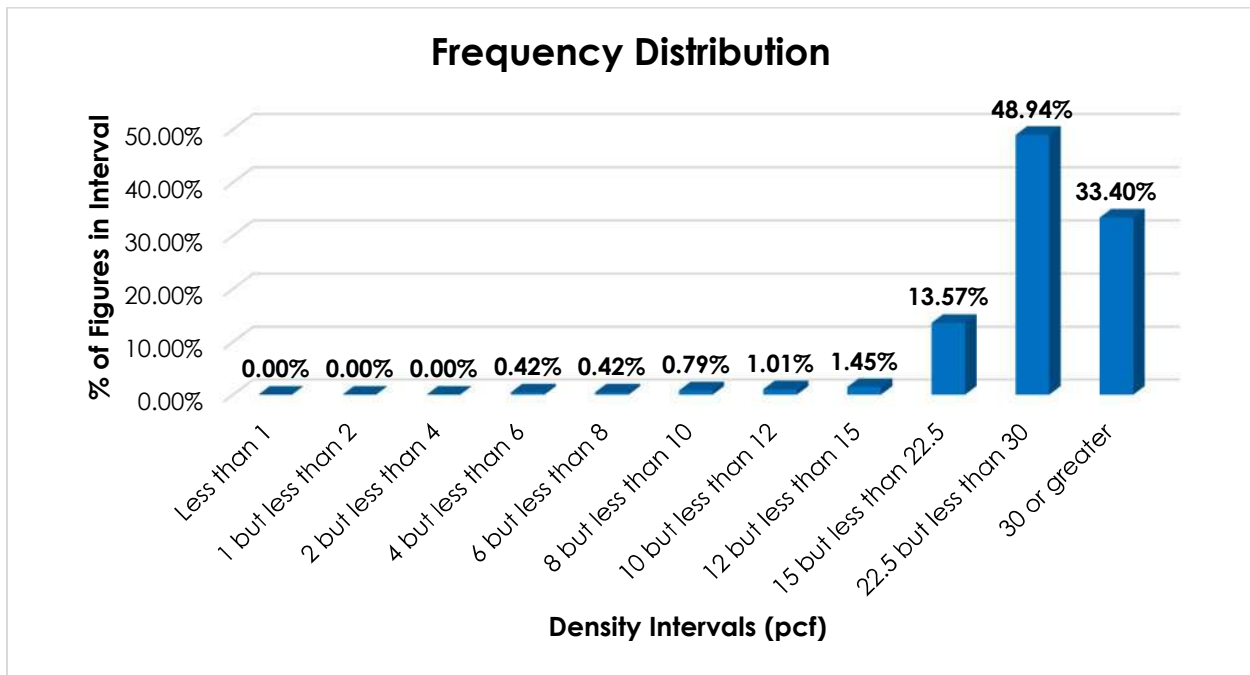
All items in the Grain Products Group name particular types of processed grains and grain by-products, and these provisions can be difficult to interpret, apply or verify. The transportation characteristics below relate to the items subject to the Grain Products Group, as shown in the Present Classification Provisions herein.

Transportation Characteristics

Density—The information of record includes 6,426 density observations obtained from the FCDC's Density Study¹. The densities range from 4.11 to 59.06 pcf, with an overall average density of 28.38 pcf. As shown in the graph on the following page, the density distribution is left-skewed, with almost 83% of the figures being 15 pcf or greater.

¹ The Density Study is part of an ongoing effort by the FCDC to collect information on actual shipments across all product categories handled by the LTL industry. Carriers that choose to participate in the Study periodically submit shipment data captured through their respective freight auditing programs. The FCDC uses verifiable data points, identified by NMFC item, that include the weight and the dimensions and/or cube of the shipping unit.

SUBJECT 9



Handling, Stowability and Liability—As with other food, care must be taken to avoid stowing the involved commodities with hazardous materials or other freight that may pose a contamination risk. They may also be damaged by freight with which stowed or by the elements. However, there have been no reports of unusual or significant handling, stowability or liability issues.

Conclusion

Based on the foregoing analysis, and in the interest of clarification and simplification, this proposal would cancel items 89330, 89350, 89370, 89390, 89410, 89470, 89490², 89500, 89530, 89550, 89570, 89590, 89630, 89690, 89700, 89730 and 89750 with reference to item 89230. The “viz.” listing in item 89230 would also be amended in the interest of clarification and simplification.

Note, item 89314 and the generic heading, item 89300, would be canceled with no further application.

² Item 89490 would be canceled with reference to item 89230 and to provisions otherwise applicable, dependent upon whether or not the particular product shipped is regulated as hazardous by the U.S. Department of Transportation.