

SUBJECT 6

Re: Barrels Group

Contact: Larissa A. Franklin Telephone — (703) 838-1824 franklin@nmfta.org

Proponent: Freight Classification Development Council

Present Classification Provisions

Item	Description	Class
21700	BARRELS GROUP: Articles consist of Barrels, Drums, Pails or Tubs, as described in items subject to this grouping.	
21740	Barrels , wooden, NOI, see Note, item 21742.....	200
21742	NOTE—Will also apply on Half-Barrels, Casks, Hogsheads, Kegs, Puncheons or Tierces.	
21760	Barrels, Half-Barrels, Casks, Drums, Hogsheads, Kegs, Puncheons or Tierces , NOI, steel, shipping, KD, in packages	70
21780	Barrels or Drums , aluminum or aluminum and steel, other than with steel skid bases:	
Sub 1	Not nested:	
Sub 2	Capacity not over 4 gallons, see Note, item 21782, in boxes	100
Sub 3	Capacity over 4 gallons	200
Sub 4	Nested or one or more completely enclosed within another	100
21782	NOTE—Also applies when equipped with carbon dioxide gas regulators or valves and dispensing nozzle, attached or in separate packages.	
21810	Drums , steel, lead lined, loose or in packages	85
21840	Drums, Barrels, Pails or Tubs , shipping, fiberboard or pulpboard, or fiberboard or pulpboard and metal, wood or plastic combined, other than taper sided, see Note, item 21841; SU, loose; or KD, in packages; subject to Item 170 and having a density in pounds per cubic foot of:	
Sub 1	Less than 1	400
Sub 2	1 but less than 2	300
Sub 3	2 but less than 4	250
Sub 4	4 but less than 6	175
Sub 5	6 but less than 8	125
Sub 6	8 but less than 10	100
Sub 7	10 but less than 12	92.5
Sub 8	12 but less than 15	85
Sub 9	15 but less than 22.5	70
Sub 10	22.5 but less than 30	65
Sub 11	30 or greater	60
21841	NOTE—Also applies when equipped with plastic inserts or liners.	
21860	Drums, Pails or Tubs , shipping, fiberboard or pulpboard, or fiberboard or pulpboard and metal or wood combined, taper sided:	
Sub 1	Not nested.....	150
Sub 2	Nested	85

SUBJECT 6

Proposed Classification Provisions

Item	Description	Class
21700	BARRELS GROUP , etc	⇒Cancel; no further application
21740	Barrels , wooden, NOI, etc	⇒Cancel; see item NEW
21742	NOTE—⇒Cancel; no further application.	
21760	Barrels, Half-Barrels, Casks, Drums, Hogsheads, Kegs, Puncheons or Tierces , NOI, steel, shipping, KD, etc	⇒Cancel; see item NEW
21780	Barrels or Drums , aluminum or aluminum and steel, other than with steel skid bases, etc.....	⇒Cancel; see item NEW
21782	NOTE—⇒Cancel; no further application.	
21810	Drums , steel, lead lined, etc	⇒Cancel; see item NEW
21840	Drums, Barrels, Pails or Tubs , shipping, fiberboard or pulpboard, or fiberboard or pulpboard and metal, wood or plastic combined, other than taper sided, etc	⇒Cancel; see item NEW
21841	NOTE—⇒Cancel; no further application.	
21860	Drums, Pails or Tubs , shipping, fiberboard or pulpboard, or fiberboard or pulpboard and metal or wood combined, taper sided, etc.....	⇒Cancel; see item NEW
⇒NEW	Drums, Pails or Tubs , shipping, NOI; or Barrels, Casks or Kegs , NOI; in packages, subject to Item 170 and having a density in pounds per cubic foot of:	
Sub 1	Less than 1	400
Sub 2	1 but less than 2	300
Sub 3	2 but less than 4	250
Sub 4	4 but less than 6	175
Sub 5	6 but less than 8	125
Sub 6	8 but less than 10	100
Sub 7	10 but less than 12	92.5
Sub 8	12 but less than 15	85
Sub 9	15 but less than 22.5	70
Sub 10	22.5 but less than 30	65
Sub 11	30 or greater	60

SUBJECT 6

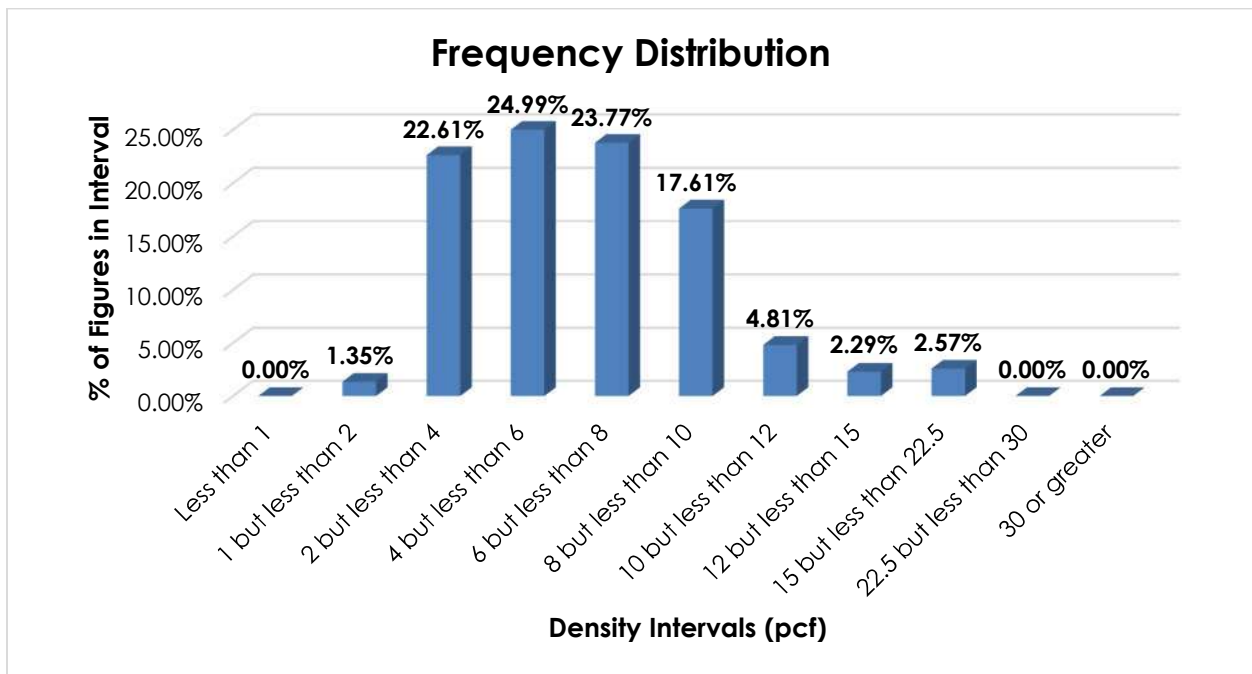
Analysis

Introduction

This proposal is based on information developed during a review of the Barrels Group.

Transportation Characteristics

Density—The information of record includes 4,157 density observations obtained from the FCDC’s Density Study¹. The densities range from 1.02 to 21.00 pcf, with an overall average density of 6.50 pcf. As shown in the graph below, the densities are distributed relatively uniform between 2 and 8 pcf.



Handling, Stowability and Liability—There have been no reports of unusual or significant handling, stowability or liability issues.

¹ The Density Study is part of an ongoing effort by the FCDC to collect information on actual shipments across all product categories handled by the LTL industry. Carriers that choose to participate in the Study periodically submit shipment data captured through their respective freight auditing programs. The FCDC uses verifiable data points, identified by NMFC item, that include the weight and the dimensions and/or cube of the shipping unit.

SUBJECT 6**Conclusion**

Based on the foregoing analysis, this proposal would cancel all of the items subject to the Barrels Group with reference to a new item, naming "Drums, Pails or Tubs, shipping, NOI; or Barrels, Casks or Kegs, NOI." The new item would provide the FCDC's standard 11-subprovision density scale².

Notes, items 21742, 21782 and 21841 would be canceled as having no further application, as would the generic heading, item 21700.

The minimum packaging requirements would ensure that freight is adequately protected and can be handled and stowed in a manner that is reasonably safe and practicable so as to withstand the normal rigors of the less-than-truckload environment.

² The FCDC's standard 11-subprovision density scale includes reference to Item (Rule) 170, the inadvertence clause.