

SUBJECT 3

Re: Wallboard Group

Contact: Adam C. Mercer Telephone — (703) 838-1911 mercer@nmfta.org

Proponent: Freight Classification Development Council

Present Classification Provisions

Item	Description	Class
193640	WALLBOARD GROUP: Articles consist of Wallboard, Building Board or Building Insulation Board, as described in items subject to this grouping.	
193690	Boards, foundation, water impedence, consisting of clay and fiberboard or pulpboard combined, in wrapped bundles, edges and corners protected by fiberboard or wood.....	60
193693	Boards, Panels or Sheets, sodium silicate and glass fiber combined, with or without wire mesh reinforcement, surface coated with epoxy resin, in wrapped packages.....	60
193695	Boards, Panels or Sheets, tile backing or floor underlayment, Portland cement reinforced with glass fiber mesh, in wrapped bundles.....	60
193720	Cork, Fiberboard and Wood combined, in boxes or crates.....	85
193740	Diatomaceous Earth, with or without paper facings, in boxes or crates.....	70
193760	Fiberboard, steel covered, in packages.....	70
193820	Fiberboard, Hardboard or Pulpboard, NOI, solid, including Ceiling Tile or Panels, see Note, item 193823, in square or rectangular shapes, see Notes, items 193821 and 193825, in packages, subject to Item 170 and having a density in pounds per cubic foot of:	
Sub 1	Less than 35.....	70
Sub 2	35 or greater.....	55
193821	NOTE—Applies on board made of vegetable, wood or mineral fiber, separate or combined with mineral filler. Board may be plain, grooved, needled, embossed or otherwise surface textured and may be perforated with holes not exceeding 9/32 inch. Slots may be provided for the passage of air. Edges may be beveled or tongue-and-grooved, and boards may be equipped with holes for fasteners. Surfaces may also be painted or printed.	
193823	NOTE—The word 'solid' as used herein applies only to materials which are not sponge-like and which are nonyielding to handling pressure.	
193825	NOTE—When bundled, edges and corners of board must be securely protected by fiberboard or wood.	
193840	Fiberboard, Pulpboard or Strawboard and Wood combined, in packages.....	70
193860	Fiberboard, Hardboard or Pulpboard, solid, see Note, item 193823, in square or rectangular shapes, not bent, faced with plastic sheet or film, see Note, item 193821, in boxes or crates.....	70
193870	Forms or Shapes, hardboard, wallboard or building board, other than square or rectangular, not bent, in packages.....	70

SUBJECT 3

Present Classification Provisions — Concluded

Item	Description	Class
	WALLBOARD GROUP: subject to item 193640	
193880	Plasterboard , steel faced on one or both sides, not further painted than primed, on pallets or lift truck skids, corners protected60	
193940	Pulpboard or Plasterboard and Lead combined (X-ray Proof Lath) , in boxes or crates or in bundles, see Note, item 193942.....70	
193942	NOTE—When in bundles, all edges must be protected by fiberboard not less than 0.100 inch thick, metal strapped.	
193960	Wallboard or Building Board , built-up or combined wood, or plywood, combined with fiberboard or fiberboard wallboard, with backing or facing of other materials, see Note, item 193962, in packages protecting edges and all surfaces liable to damage70	
193962	NOTE—Applies only when the backing or facing consists of the following materials, separate or in combination with each other and with or without a metal foil barrier: Laminated plastics (sheets of paper, wood or cloth compressed with plastic); Decorative plastic sheet or film; Cloth or fabric; Veneer.	

Proposed Classification Provisions

Item	Description	Class
193640	WALLBOARD GROUP , etc⇒Cancel; no further application	
193690	Boards , foundation, water impedence, consisting of clay and fiberboard or pulpboard combined, etc⇒Cancel; see item A-NEW	
193693	Boards, Panels or Sheets , sodium silicate and glass fiber combined, with or without wire mesh reinforcement, surface coated with epoxy resin, etc⇒Cancel; see item A-NEW	
193695	Boards, Panels or Sheets , tile backing or floor underlayment, Portland cement reinforced with glass fiber mesh, etc⇒Cancel; see item A-NEW	
193720	Cork, Fiberboard and Wood combined , etc⇒Cancel; see item A-NEW	
193740	Diatomaceous Earth , with or without paper facings, etc⇒Cancel; see item A-NEW	
193760	Fiberboard , steel covered, etc⇒Cancel; see item A-NEW	

SUBJECT 3

Proposed Classification Provisions — Continued

Item	Description	Class
193820	WALLBOARD GROUP: subject to item 193640 Fiberboard, Hardboard or Pulpboard, NOI, solid, including Ceiling Tile or Panels, see Note, item 193823, in square or rectangular shapes, etc.....	⇒Cancel; see item A-NEW
193821	NOTE—⇒Cancel; no further application.	
193823	NOTE—⇒Cancel; no further application.	
193825	NOTE—⇒Cancel; no further application.	
193840	Fiberboard, Pulpboard or Strawboard and Wood combined, etc ...	⇒Cancel; see item A-NEW
193860	Fiberboard, Hardboard or Pulpboard, solid, see Note, item 193823, in square or rectangular shapes, not bent, faced with plastic sheet or film, etc.....	⇒Cancel; see item A-NEW
193870	Forms or Shapes, hardboard, wallboard or building board, other than square or rectangular, not bent, etc	⇒Cancel; see item A-NEW
193880	Plasterboard, steel faced on one or both sides, not further painted than primed, etc.....	⇒Cancel; see item A-NEW
193940	Pulpboard or Plasterboard and Lead combined (X-ray Proof Lath), etc.....	⇒Cancel; see item A-NEW
193942	NOTE—⇒Cancel; no further application.	
193960	Wallboard or Building Board, built-up or combined wood, or plywood, combined with fiberboard or fiberboard wallboard, with backing or facing of other materials, etc.....	⇒Cancel; see item A-NEW
193962	NOTE—⇒Cancel; no further application.	

SUBJECT 3

Proposed Classification Provisions — Concluded

Item	Description	Class
⇒A-NEW	Wallboard, Building Board or Building Insulation Board , in panels, NOI, including Ceiling Tiles , in packages, see Note, item B-NEW:	
Sub 1	Greatest dimension exceeding 192 inches, subject to Item 170 and having a density in pounds per cubic foot of:	
Sub 2	Less than 10.....	175
Sub 3	10 but less than 15.....	100
Sub 4	15 or greater.....	77.5
Sub 5	Greatest dimension exceeding 96 inches but not exceeding 192 inches, subject to Item 170 and having a density in pounds per cubic foot of:	
Sub 6	Less than 10.....	150
Sub 7	10 but less than 15.....	92.5
Sub 8	15 or greater.....	70
Sub 9	Greatest dimension not exceeding 96 inches, subject to Item 170 and having a density in pounds per cubic foot of:	
Sub 10	Less than 10.....	125
Sub 11	10 but less than 15.....	85
Sub 12	15 or greater.....	65
⇒B-NEW	NOTE—Articles tendered for shipment on lift truck skids, pallets or platforms must be securely fastened to and must not overhang the edges of the lift truck skid, pallet or platform deck. Exposed surfaces and edges must be protected by packing forms or other packaging materials so as to withstand the normal rigors of the less-than-truckload environment.	

Analysis

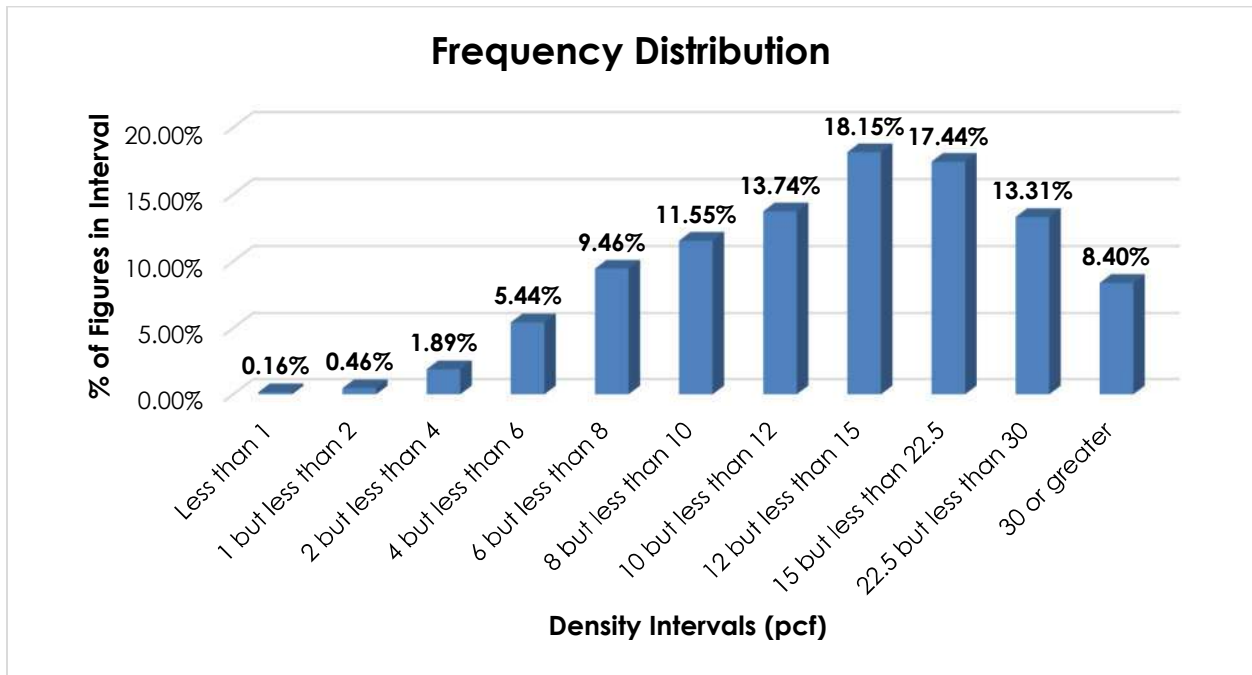
Introduction

All of the items in the Wallboard Group name particular types of wallboards or building boards, and these provisions can be difficult to interpret, apply or verify. The transportation characteristics below relate to the items subject to the Wallboard Group, as shown in the Present Classification Provisions herein.

SUBJECT 3

Transportation Characteristics

Density—The information of record includes 26,272 density observations obtained from the FCDC’s Density Study¹. The densities range from 0.10 to 57.07 pcf, with an overall average density of 15.67 pcf. As shown in the graph below, the density distribution is left-skewed and has predominant peaks in the 12 but less than 15 pcf and 15 but less than 22.5 pcf intervals, with clustering around those intervals. Density breaks at 10 and 15 pcf reflect the modality and spread of the distribution.



When the data is evaluated based on the proposed density breaks at 10 and 15 pcf, the density ranges and averages shown in the table below emerge.

Density Groups (pcf)	Density Range (pcf)	Average Density (pcf)
Less than 10	0.10 – 9.99	7.08
10 but less than 15	10.00 – 14.99	12.34
15 or greater	15.00 – 57.07	24.73

¹ The Density Study is part of an ongoing effort by the FCDC to collect information on actual shipments across all product categories handled by the LTL industry. Carriers that choose to participate in the Study periodically submit shipment data captured through their respective freight auditing programs. The FCDC uses verifiable data points, identified by NMFC item, that include the weight and the dimensions and/or cube of the shipping unit.

SUBJECT 3

Handling—When not exceeding 96 inches in greatest dimension, the involved products may be tendered in boxes secured on lift truck skids or pallets, but as greatest dimension increases, the commodities are typically tendered in packages. When not exceeding 96 inches in greatest dimension, the involved articles do not appear to have any significant handling issues. However, these commodities vary greatly in size, and the data of record shows that numerous observations exceed 96 inches (8 feet) in greatest dimension², with some exceeding 192 inches (16 feet). As greatest dimension increases, the handling into and out of the vehicle becomes considerably more difficult, and specialized equipment, or additional personnel, may be necessary to safely handle longer units. Furthermore, as greatest dimension increases, cross-dock operations can be significantly affected. Often there is not enough room at carrier facilities to safely or easily handle and maneuver excessively long handling units.

Stowability—When the involved articles do not exceed 96 inches in greatest dimension, they typically do not present significant or unusual stowability issues. Handling units exceeding 96 inches in greatest dimension are more difficult to stow with other general freight, particularly as they may lack a flat load-bearing surface for top freight. Due to the commodities' size, it may be difficult to stow adjacent freight. These factors reduce or complicate the carrier's ability to maximize vehicle utilization. These products may also have protrusions or edges that can potentially be damaged or damage adjacent freight. These factors can make it more difficult and time consuming for the carrier to properly structure the load. Furthermore, for the longest articles, the carrier will have to ensure that the freight will fit in the vehicle.

Liability—The involved articles are not perishable nor hazardous in nature. Shipments of these commodities not adequately protected by packaging materials, or that overhang the lift truck skid or pallet, are more liable to damage, such as denting and scuffing.

Conclusion

Based on the foregoing analysis, all items subject to the Wallboard Group would be canceled with reference to a new item, naming "Wallboard, Building Board or Building Insulation Board, in panels, NOI, including Ceiling Tiles," with classes predicated on greatest dimension and density, with breaks at 10 and 15 pcf³. The table on the following page shows the average densities for each density group, the guideline classes, and class adjustments as greatest dimension increases.

² Item (Rule) 568, "Heavy or Bulky Freight—Loading or Unloading," employs the threshold limit of exceeding 8 feet (96 inches) in greatest dimension as the measurement at which freight becomes more difficult to load and unload when compared to general boxed freight.

³ The density provisions would include reference to Item (Rule) 170, the inadvertence clause.

SUBJECT 3

Density Group (pcf)	Average Density (pcf)	Class Based on FCDC Guidelines When Greatest Dimension Does Not Exceed 96”	Class Adjustment When Greatest Dimension Exceeds 96” But Does Not Exceed 192”	Class Adjustment When Greatest Dimension Exceeds 192”
Less than 10	7.08	125	150	175
10 but less than 15	12.34	85	92.5	100
15 or greater	24.73	65	70	77.5

A new attendant Note would be established to provide additional packaging requirements. The FCDC’s Packaging Manager has reviewed the proposed minimum packaging requirements and determined that they are appropriate for the LTL environment.

Additionally, Notes, items 193821, 193823, 193825, 193942 and 193962, as well as the generic heading, item 193640, would be canceled with no further application.