

SUBJECT 1**Re:** Foodstuffs Group**Contact:** Larissa A. Franklin
Adam C. MercerTelephone — (703) 838-1824
Telephone — (703) 838-1911franklin@nmfta.org
mercerc@nmfta.org**Proponent:** Freight Classification Development Council**Present Classification Provisions**

See Appendix A herein.

Proposed Classification Provisions

See Appendix B herein.

Analysis**Introduction**

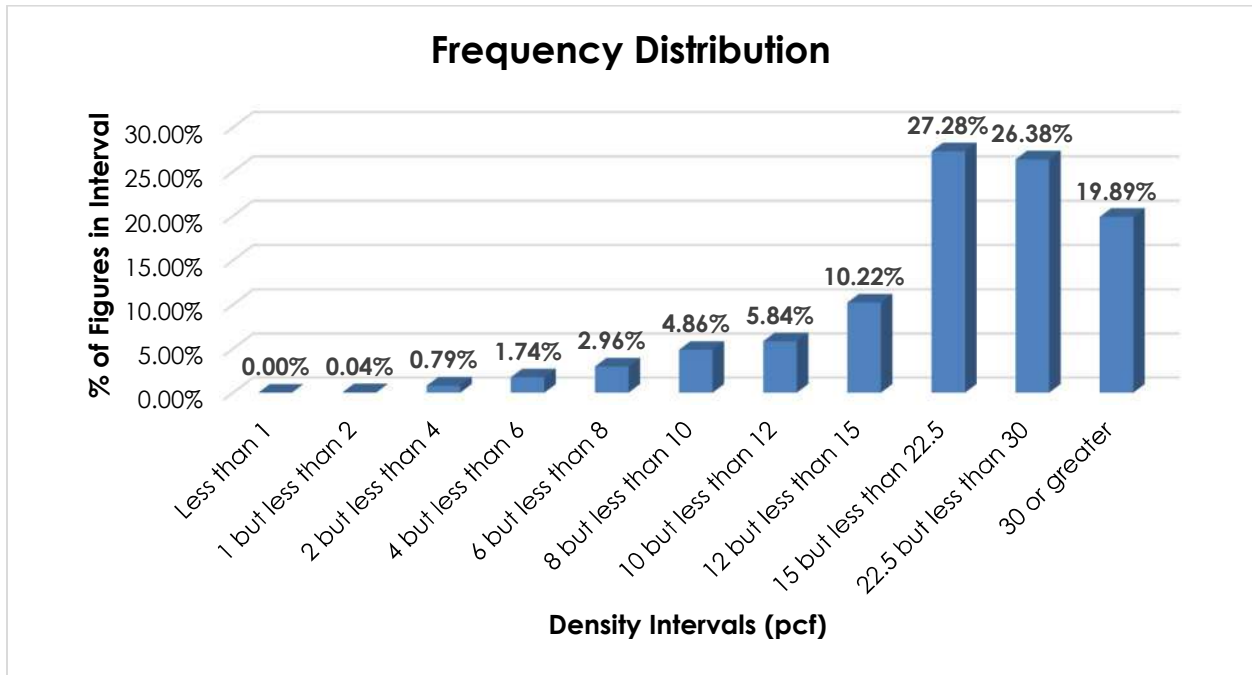
Numerous items in the Foodstuffs Group name particular types of foodstuffs, and these provisions can be difficult to interpret, apply or verify. The transportation characteristics below relate to the items subject to the Foodstuffs Group, as shown in the Present Classification Provisions herein.

Transportation Characteristics

Density—The information of record includes 178,112 density observations obtained from the FCDC's Density Study¹. The densities range from 0.83 to 68.62 pcf, with an overall average density of 21.99 pcf. As shown in the graph on the following page, the density distribution is left-skewed, with over 73% of the figures being 15 pcf or greater.

¹ The Density Study is part of an ongoing effort by the FCDC to collect information on actual shipments across all product categories handled by the LTL industry. Carriers that choose to participate in the Study periodically submit shipment data captured through their respective freight auditing programs. The FCDC uses verifiable data points, identified by NMFC item, that include the weight and the dimensions and/or cube of the shipping unit.

SUBJECT 1



Handling, Stowability and Liability—Care must be taken to avoid stowing the involved commodities with hazardous materials or other freight that may pose a contamination risk. They may also be damaged by freight with which stowed or by the elements. However, there have been no reports of unusual or significant handling, stowability or liability issues.

Conclusion

Based on the foregoing analysis, this proposal would cancel numerous provisions with reference to the full-scale, density-based provisions of item 73260². Other provisions would be canceled with reference to items 73150³, 74095, 77060 and 85880, or a combination thereof, including some with reference to item 73260⁴, in the interest of clarification and simplification.

Numerous Notes would be canceled as having no further application. Notes, items 73262 and 73263 would be amended for clarification. Two new Notes, one attendant to item 73260 and the other attendant to item 74095, would be established to clarify the application of the two items.

The minimum packaging requirements would ensure that freight is adequately protected and can be handled and stowed in a manner that is reasonably safe and practicable so as to withstand the normal rigors of the less-than-truckload environment.

² Item 73260 provides the FDC's standard 11-subprovision density scale, which includes reference to Item (Rule) 170, the inadvertence clause.

³ The density provisions include reference to Item (Rule) 170, the inadvertence clause.

⁴ When shipped, the appropriate classification for the commodities would be dependent upon the product's representation and intended use.

FREIGHT CLASSIFICATION DOCKET 2023-3

ITEM	ARTICLE	CLASS
	FOODSTUFFS GROUP: subject to item 72000	
72020	Almond Paste or Apricot Kernel Paste , in boxes.....	65
72030	Baby Food , NOI, see Note, item 72031, in boxes or Packages 1000, 2093 or 2368, subject to Item 170 and having a density in pounds per cubic foot of:	
Sub 1	Less than 15	92.5
Sub 2	15 or greater	65
72031	NOTE—Applies only on foodstuffs consisting of fruits, meats or vegetables, with or without other ingredients, specially prepared and represented as baby food.	
72041	Baking Powder , in bags, boxes, drums or Packages 2463, 2498, 2499 or 2500.....	65
72045	Bars , nutritional or snack, NOI, granola, cereal, grain or protein, with or without fruit, nuts or other ingredients, in boxes or Package 128, subject to Item 170 and having a density in pounds per cubic foot of:	
Sub 1	Less than 15	92.5
Sub 2	15 or greater	70
72080	Beans , cocoa, in bags, boxes or drums.....	65
72120	Beans , vanilla or Tahiti, in boxes.....	200
72160	Beverages , carbonated, flavored or phosphated, NOI, not including extracts, syrups nor alcoholic liquors, see Note, item 72162, in boxes or drums, in glass in bottle carriers with sealed tops or in Packages 1428, 2437 or 2438..	60
72162	NOTE—Will not apply on de-alcoholized or nonalcoholic liquors such as cordials, liqueurs, vermouths or cocktails—they being subject to the class applying on liquors, NOI, nonalcoholic.	
72170	Beverages, Drinks or Shakes , nutritional, flavored, NOI, see Note, item 72171, in boxes or Package 2438, subject to Item 170 and having a density in pounds per cubic foot of:	
Sub 1	Less than 30	70
Sub 2	30 or greater	60
72171	NOTE—Applies only on liquid products that provide a combination of protein and other nutrients designed to provide or supplement an individual's dietary needs.	
72220	Bread Making Compounds , NOI, other than prepared flour, edible flour, NOI, baking powder or yeast, and including compounds such as gluten developers, yeast foods and dough improvers, in bags, boxes, drums or Package 2323.....	60
72260	Brewers' Wort , dry, in bags.....	65
72280	Butter and Honey mixed , in boxes or drums, or in pails in crates.....	77.5
72300	Caviar , in glass or metal containers in boxes, or in bulk in drums.....	85
72330	Cheese , imitation, made from vegetable oils, in boxes.....	77.5
72360	Chips , flour or meal, flavored, not exploded, expanded nor puffed, requiring further cooking, in boxes or Package 2231.....	60
72490	Coating , doughnut or cake, dry, see Note, item 72492, in bags.....	55
72492	NOTE—Applies only on powdered sugar containing not over 30 percent of corn starch, shortening and flavoring.	
72495	Coatings or Seasonings , food, cheese flavored, see Note, item 72496, in bulk in bags.....	60
72496	NOTE—Applies on blended ingredients such as: dried milk, whey, flavoring additives (including cheese solids), enzymes, salt, and acidifying or coloring agents; having a moisture content not exceeding 5 percent. Does not apply on commodities which are designed to be reconstituted with liquid ingredients.	
72510	Cocktail Mixes or Mixers , liquid, nonalcoholic, other than beverages, see Note, item 72511, in boxes, drums or Packages 2463, 2498, 2499 or 2500.....	65
72511	NOTE—Applies only on liquid nonalcoholic mixtures, other than beverages, used in the preparation of alcoholic mixed drinks, and are so represented for sales purposes.	
72520	Cocoa , dry, with or without sugar, in bags, boxes or drums or in metal cans in crates or in Package 2268; or Cocoa Paste , see Note, item 72522, in inner containers in boxes.....	65
72522	NOTE—Applies only on fluid compounds of cocoa and vegetable oil, not sweetened and without other flavoring.	
72540	Cocoa Butter (Cocoa Grease) , in bags, bales, boxes or drums.....	65
72560	Coconut , prepared, NOI, see Note, item 72561, in bags or boxes.....	70
72561	NOTE—Does not apply on coconut chips. For applicable provisions, see item 73260.	
72620	Coffee Extract , liquid, in boxes or drums.....	100
72700	Coffee Substitutes , cereal, fruit or vegetable, NOI, or Chicory , roasted, crushed or ground, in bags, boxes or drums.....	65
72735	Compounds , yeast and yogurt, in bags, boxes or drums.....	60
72770	Desserts or Salads , fruit, pasta or vegetable, with or without gelatine or dressing:	
Sub 1	In bags in boxes.....	100
Sub 2	In inner containers other than glass jars or metal cans and other than bags, in boxes.....	77.5
72788	Dinners , taco or tostada, consisting of corn meal taco or tostada shells, meat seasoning and sauce, with or without tortillas, in boxes.....	85
72810	Dressing or Stuffing , bread base, with or without other ingredients, dry; or Bread Crumbs; Bread Cubes or Croutons; or Cracker or Matzo Meal ; in bags, boxes or Packages 1000, 1500 or 2445, subject to Item 170 and having a density in pounds per cubic foot of:	
Sub 1	Less than 10	150
Sub 2	10 or greater	70
72820	Eggs , cooked and preserved in vinegar brine, not frozen, in boxes.....	60
72840	Eggs , dried, combined with dehydrated shortening and nonfat milk solids, in boxes or drums.....	70
72860	Extracts , meat, with or without a mixture of vegetable extracts, or Soup Tablets , in containers in boxes or drums....	100
72880	Extracts , root beer, in inner containers in boxes or drums, see Note, item 72882, or in bulk in drums.....	70
72882	NOTE—Also applies on a net weight of phosphoric acid not in excess of 2 percent of net weight of extract when in same shipping package with extract.	
72910	Extracts , NOI; Flavoring Compounds , NOI; Imitation Flavors , NOI; or Bottlers' Flavoring Compounds , NOI, see Note, item 72917; liquid, paste or dry, not required by the U.S. Department of Transportation to bear a Hazard Class or Hazard Division label or placard, see Notes, items 72911, 72914 and 72916; in boxes or drums; or dry, in bags or Packages 1000, 2358 or 2440.....	70

FREIGHT CLASSIFICATION DOCKET 2023-3

ITEM	ARTICLE	CLASS
	FOODSTUFFS GROUP: subject to item 72000	
72911	NOTE—Does not apply on materials regulated by the U.S. Department of Transportation as hazardous and required to bear a Hazard Class or Hazard Division label or placard. For classes applicable to such hazardous materials, see provisions elsewhere in this Classification.	
72914	NOTE—Inner containers may include plastic or metal molds, or paper, plastic or wooden sticks not in excess of 5 percent of gross weight of package.	
72916	NOTE—There may be included in each package a quantity of sodium salts not in excess of 5 percent of the gross weight of the package.	
72917	NOTE—There may be included in each shipment of Bottlers' Flavoring Compounds a quantity of phosphoric acid solution, alcohol solution, or a combination of both, not in excess of 15 percent of the total shipment weight.	
73150	Flour, Meal or Sugar, viz.: Flour , NOI; Meal , NOI, including Corn Meal ; Mixes , baking, NOI, including Bread, Brownie, Cake, Cookie, Muffin, Pancake or Waffle Mixes , see Note, item 73151; Mixes , batter, breading or coating, NOI; Sugar , NOI; In bags, boxes, drums or Packages 128 or 2456, subject to Item 170 and having a density in pounds per cubic foot of:	
Sub 1	Less than 10.....	125
Sub 2	10 but less than 15.....	85
Sub 3	15 but less than 30.....	70
Sub 4	30 or greater.....	55
73151	NOTE—Also applies on other ingredients or complement of accessories necessary for completion of the finished product when packaged in same box.	
73220	Food Curing, Preserving or Seasoning Compounds , NOI, in bags, boxes, drums or Packages 510, 860, 2283 or 2358.....	70
73260	Foodstuffs , other than frozen, Group IV, viz.: Bakery Goods , NOI, also in Package 2428; Beverage Preparations , NOI, see Note, item 73263, also in Packages 2330 or 2438; Coffee, Tea or Herbal Tea , NOI, see Note, item 73261, also in Packages 2330 or 2380; Cookies or Crackers , NOI, also in Package 2428; Desserts, Dessert Toppings or Related Foods , NOI, see Note, item 73262; Foodstuffs , NOI; Hot Chocolate or Hot Cocoa Mixes ; Juice , fruit or vegetable, including Juice Concentrates, Juice Beverages, Juice Drinks or Juice Powders or Crystals , see Note, item 73263, also in Packages 2438 or 2467; Pasta or Noodles , with or without other ingredients; Rice , cleaned or prepared, NOI, with or without other ingredients; Snack Foods , NOI; Soups or Soup Mixes ; In bags, boxes, drums or Packages 128, 223, 510, 1000, 1400, 1500, 2093, 2231, 2404, 2414, 2416, 2421, 2425, 2463, 2498, 2499, 2500 or 2507, subject to Item 170 and having a density in pounds per cubic foot of:	
Sub 1	Less than 1	400
Sub 2	1 but less than 2	300
Sub 3	2 but less than 4	250
Sub 4	4 but less than 6	175
Sub 5	6 but less than 8	125
Sub 6	8 but less than 10	100
Sub 7	10 but less than 12	92.5
Sub 8	12 but less than 15	85
Sub 9	15 but less than 22.5	70
Sub 10	22.5 but less than 30	65
Sub 11	30 or greater.....	60
73261	NOTE—Also applies on: instant, soluble, freeze-dehydrated or freeze-dried coffee, tea or herbal tea; coffee, tea or herbal tea in premeasured servings, with or without integral filter; or Coffee Service Kits or Sets , consisting of coffee in premeasured servings, with or without integral filter, and with or without non-dairy creamer, sugar or artificial sweetener, stirrers, tea, herbal tea or hot chocolate in same box.	
73262	NOTE—Provisions for desserts, dessert toppings or related foods include, but are not limited to: Crusts , pie or tart; Dessert Mixes or Preparations , NOI; Dishes, Bowls, Ice Cream Cones or Shells , edible, NOI; Dough , prepared; Gelatine Dessert ; Sauces or Toppings , ice cream or dessert, NOI, in other than pressurized containers, including Marshmallow Creme, Nuts (Nutmeats) in Syrup, or Sprinkles .	
73263	NOTE—Also applies on freeze-dehydrated or freeze-dried beverage preparations or juice powders or crystals.	
73300	Fruit , in liquor or syrup containing over 5 percent alcohol, in boxes or drums.....	85
73340	Fruit or Fruit Peel , candied, crystallized, glazed or stuffed, NOI, in boxes, drums or pails, or in metal cans in crates.	65
73380	Gelatine or Pectin , NOI, in bags, boxes or drums	70
73440	Honey , comb, in section frames:	
Sub 1	In wooden boxes without interior packing or wrapping	200
Sub 2	In Packages 252, 253 or 254	85

FREIGHT CLASSIFICATION DOCKET 2023-3

ITEM	ARTICLE	CLASS
	FOODSTUFFS GROUP: subject to item 72000	
73450	Honey , NOI, in boxes, drums or Packages 2463, 2478, 2498, 2499 or 2500	60
73520	Jelly , corn syrup, in boxes, drums or pails	60
73695	Kernels , corn, whole, roasted, salted or not salted, not popped, in boxes	70
73705	Kernels or Seeds , pumpkin or sunflower, cooked, in bags, boxes or drums, subject to Item 170 and having a density in pounds per cubic foot of:	
Sub 1	Less than 10	110
Sub 2	10 but less than 12	92.5
Sub 3	12 or greater	70
73810	Malt Extract , liquid:	
Sub 1	In glass inner containers in boxes	70
Sub 2	In inner containers other than glass in boxes, or in bulk in drums	65
73820	Malt Extract , other than liquid, Malt Powder (Dehydrated Malt Syrup) , or Maltose (Malt Sugar) :	
Sub 1	In glass or earthenware inner containers in boxes	70
Sub 2	In bulk in bags, boxes or drums, or in inner containers other than glass or earthenware in boxes	65
74000	Milk, Cream or Vegetable Oil Compounds (Dessert Toppings) , aerated, with or without flavoring or other ingredients, in gas-charged dispensing containers:	
Sub 1	Frozen, in boxes	100
Sub 2	Other than frozen, in boxes or in Package 2277	77.5
74060	Mixes , basic food sauce, or food dip, dry, see Note, item 74062, in boxes or Package 2283	70
74062	NOTE—Applies only on sauce mixes such as for marinara sauce, pizza sauce, spaghetti sauce, white sauce or curry sauce; or on dip mixes such as French onion mix, barbecue mix or dill and chive mix; requiring one or more liquid ingredients to produce a sauce or dip.	
74090	Molasses, dried (Powdered Molasses) , without or with not to exceed 33 ¹ / ₃ percent of sugar, shortening or flour, in boxes or drums	60
74095	Molasses or Syrups , not medicated, viz.:	
	Agave Syrup (Agave Nectar);	
	Beverage or Fountain Syrup;	
	Flavoring Syrup;	
	Maple Syrup;	
	Molasses , NOI;	
	Syrup , corn, rye, sorghum or wheat, NOI;	
	Syrup , malt or malted;	
	Syrup , NOI;	
	In boxes, drums or Packages 1000, 2035, 2288, 2402, 2463, 2467, 2498, 2499 or 2500	65
74120	Monosodium Glutamate , in Package 860, in containers in boxes, or in bulk in bags, boxes or drums	70
74150	Mustard , ground, Mustard Meal, Mustard Flour or Mustard Bran , in boxes, drums or Package 2358	65
74190	Oils , cooking or salad, NOI; Cooking Spray , not required by the U.S. Department of Transportation to bear a Hazard Class or Hazard Division label or placard, see Note, item 74191; or Vegetable Oil Shortening ; in boxes, drums or Packages 275, 1000, 2257, 2288, 2330, 2393, 2401, 2415 or 2499	65
74191	NOTE—Does not apply on materials regulated by the U.S. Department of Transportation as hazardous and required to bear a Hazard Class or Hazard Division label or placard. For classes applicable to such hazardous materials, see provisions elsewhere in this Classification.	
74200	Onions , French fried, in containers in boxes or in Package 2330	77.5
74310	Popcorn , shelled, not popped, with or without other ingredients, in boxes:	
Sub 1	In popping containers, including Microwave Popcorn	70
Sub 2	NOI	65
74500	Prune Concentrate , in boxes or drums	65
74510	Purees , fruit or vegetable, including Applesauce :	
Sub 1	In pouches, in boxes	70
Sub 2	NOI, in boxes, drums or Packages 1000, 1264, 2288, 2463, 2498, 2499 or 2500	60
74540	Rice , brewers', in bags or drums	55
74660	Salt , common (Sodium Chloride), containing food curing, flavoring or preserving ingredients, whether or not subjected to actual smoking processes or chemically treated to simulate smoked salt, in bags, boxes, drums or Packages 510, 2330, 2358 or 2456	60
74720	Sauerkraut, Sauerkraut Brine or Sauerkraut Juice , other than frozen, in boxes, drums or Package 1000	60
74735	Shells , taco, corn meal, folded, hard, in inner containers in boxes, subject to Item 170 and having a density in pounds per cubic foot of:	
Sub 1	Less than 6	150
Sub 2	6 or greater	110
74737	Shells , taco, or Tortillas , soft, in boxes	70
74740	Shortening , powdered, consisting of milk or whey solids and vegetable oil shortening or lard, with or without desiccated eggs or sugar, in bags, boxes or drums	70
74850	Soybeans , roasted, whole, halved or chopped, not ground, with or without flavoring or seasoning ingredients	65
74860	Spice Base , consisting of grain products, without sugar, or with not more than 12 percent sugar, in bags	70
74870	Sticks or Stirrers , beverage, with dry beverage preparation attached, in boxes	100
74890	Substitutes , sour cream, in a liquid, paste or semisolid state, other than frozen:	
Sub 1	In bulk in plastic bags in boxes, or in inner containers, other than cans, in boxes	77.5
Sub 2	In cans, in boxes	60
75070	Sugar Spread (Sugar and Glucose mixed) , in boxes, crates or drums	65
75120	Syrup , coloring, burnt sugar (caramel), in boxes or drums:	
Sub 1	Dehydrated	65
Sub 2	NOI	60
75140	Syrup , corn or potato (glucose), dehydrated, in bags, boxes or drums	65

FREIGHT CLASSIFICATION DOCKET 2023-3

ITEM	ARTICLE	CLASS
	FOODSTUFFS GROUP: subject to item 72000	
75200	Tablespreads , vegetable oil base with flavoring, other than margarine, in boxes	77.5
75220	Tamales , in boxes or drums:	
Sub 1	Frozen	85
Sub 2	Not frozen	60
75245	Tenderizers , meat, liquid, in boxes or drums	60
75300	Truffles , in glass jars, in boxes	250
75400	Vinegar , liquid, in boxes, drums or Packages 2463, 2498, 2499 or 2500	60
75430	Wine , cooking, flavoring or seasoning (Wine , salted or sugared), in boxes	70
75470	Yeast , compressed or not compressed, other than dry or liquid, prepaid, in boxes or Packages 72, 73 or 74.....	77.5
75480	Yeast , dry, in bags, boxes or drums	85
75490	Yeast , liquid, in inner containers in boxes, or in bulk in drums	150
	FRUITS OR VEGETABLES, DRIED, GROUP: subject to item 77000	
77060	Beans , edible, NOI, in bags or boxes	65
	GASES OR CRYOGENIC LIQUIDS GROUP: subject to item 85500	
85880	☼ Gases, NOI, or Gas Mixtures , NOI, other than flammable or toxic, see Note, item 85881; in cargo tanks or steel cylinders, see Note, item 85882; or in containers in boxes, see Note, item 85883.....	110
85881	NOTE— 1. Applies on materials regulated by the U.S. Department of Transportation as a Hazard Class 2, Division 2.2, Nonflammable Gas, as defined in 49 CFR §173.115 and required to bear a notice to that effect on bills of lading and packaging. 2. Does not apply when U.S. Department of Transportation regulations require shipping containers to bear a 2.1 'FLAMMABLE GAS' or 2.3 'INHALATION HAZARD' label.	
85882	NOTE—Neon, inert may be shipped in aluminum cylinders.	
85883	NOTE—Liquefied helium may be shipped in doublewall vacuum insulated containers without additional packaging, subject to the following: 1. When container exceeds 30 liters in capacity but does not exceed 100 liters capacity. 2. When container exceeds 100 liters capacity, container must be equipped with a base which will prevent rolling if container is laid on its side. When base is equipped with wheels, container must rest on two wheels and on immovable legs, skids or pad during transit. 3. When not constructed as described in paragraph (2), above, container body must be protected with a sleeve of solid fiberboard 1/4 inch or thicker or with material of equal or greater strength. Fiberboard may be laminated to form closely fitted vertical segments held together with a layer of fiberboard to facilitate forming around container body. 4. Valves, gauges and venting devices must not project above protective cage.	

FREIGHT CLASSIFICATION DOCKET 2023-3

ITEM	ARTICLE	CLASS
	FOODSTUFFS GROUP: subject to item 72000	
72020	Almond Paste or Apricot Kernel Paste , etc...☒Cancel; see item 73260.	
72030	Baby Food , NOI, see Note, item 72031, etc...☒Cancel; see item 73260.	
72031	NOTE—☒Cancel; no further application.	
72041	Baking Powder , etc...☒Cancel; see item 73260.	
72045	Bars , nutritional or snack, NOI, granola, cereal, grain or protein, with or without fruit, nuts or other ingredients, etc...☒Cancel; see item 73260.	
72080	Beans , cocoa, etc...☒Cancel; see item 77060.	
72120	Beans , vanilla or Tahiti, etc...☒Cancel; see item 77060.	
72160	Beverages , carbonated, flavored or phosphated, NOI, not including extracts, syrups nor alcoholic liquors, see Note, item 72162, etc...☒Cancel; see item 73260.	
72162	NOTE—☒Cancel; no further application.	
72170	Beverages, Drinks or Shakes , nutritional, flavored, NOI, see Note, item 72171, etc...☒Cancel; see item 73260.	
72171	NOTE—☒Cancel; no further application.	
72220	Bread Making Compounds , NOI, other than prepared flour, edible flour, NOI, baking powder or yeast, and including compounds such as gluten developers, yeast foods and dough improvers, etc...☒Cancel; see item 73150.	
72260	Brewers' Wort , dry, etc...☒Cancel; see item 73260.	
72280	Butter and Honey mixed , etc...☒Cancel; see item 73260.	
72300	Caviar , etc...☒Cancel; see item 73260.	
72330	Cheese , imitation, made from vegetable oils, etc...☒Cancel; see item 73260.	
72360	Chips , flour or meal, flavored, not exploded, expanded nor puffed, requiring further cooking, etc...☒Cancel; see item 73260.	
72490	Coating , doughnut or cake, dry, see Note, item 72492, etc...☒Cancel; see item 73150.	
72492	NOTE—☒Cancel; no further application.	
72495	Coatings or Seasonings , food, cheese flavored, see Note, item 72496, etc...☒Cancel; see item 73260.	
72496	NOTE—☒Cancel; no further application.	
72510	Cocktail Mixes or Mixers , liquid, nonalcoholic, other than beverages, see Note, item 72511, etc...☒Cancel; see item 73260.	
72511	NOTE—☒Cancel; no further application.	
72520	Cocoa , dry, with or without sugar, in bags, boxes or drums or in metal cans in crates or in Package 2268; or Cocoa Paste , see Note, item 72522, etc...☒Cancel; see item 73260.	
72522	NOTE—☒Cancel; no further application.	
72540	Cocoa Butter (Cocoa Grease) , etc...☒Cancel; see item 73260.	
72560	Coconut , prepared, NOI, see Note, item 72561, etc...☒Cancel; see item 73260.	
72561	NOTE—☒Cancel; no further application.	
72620	Coffee Extract , liquid, etc...☒Cancel; see item 73260.	
72700	Coffee Substitutes , cereal, fruit or vegetable, NOI, or Chicory , roasted, crushed or ground, etc...☒Cancel; see item 73260.	
72735	Compounds , yeast and yogurt, etc...☒Cancel; see item 73260.	
72770	Desserts or Salads , fruit, pasta or vegetable, with or without gelatine or dressing, etc...☒Cancel; see item 73260.	
72788	Dinners , taco or tostada, consisting of corn meal taco or tostada shells, meat seasoning and sauce, with or without tortillas, etc...☒Cancel; see item 73260.	
72810	Dressing or Stuffing , bread base, with or without other ingredients, dry; or Bread Crumbs; Bread Cubes or Croutons; or Cracker or Matzo Meal , etc...☒Cancel; see items 73150 and 73260.	
72820	Eggs , cooked and preserved in vinegar brine, not frozen, etc...☒Cancel; see item 73260.	
72840	Eggs , dried, combined with dehydrated shortening and nonfat milk solids, etc...☒Cancel; see item 73260.	
72860	Extracts , meat, with or without a mixture of vegetable extracts, or Soup Tablets , etc...☒Cancel; see item 73260.	
72880	Extracts , root beer, etc...☒Cancel; see item 73260.	
72882	NOTE—☒Cancel; no further application.	
72910	Extracts , NOI; Flavoring Compounds , NOI; Imitation Flavors , NOI; or Bottlers' Flavoring Compounds , NOI, see Note, item 72917; liquid, paste or dry, not required by the U.S. Department of Transportation to bear a Hazard Class or Hazard Division label or placard, see Notes, items 72911, 72914 and 72916, etc...☒Cancel; see item 73260.	
72911	NOTE—☒Cancel; no further application.	
72914	NOTE—☒Cancel; no further application.	
72916	NOTE—☒Cancel; no further application.	
72917	NOTE—☒Cancel; no further application.	
△73150	Flour, Meal or Sugar, viz.: Flour , NOI; Meal , NOI, including Corn Meal ; Mixes , baking, NOI, including Bread, Brownie, Cake, Cookie, Muffin, Pancake or Waffle Mixes , see Note, item 73151; Mixes , batter, breading or coating, NOI; Sugar , NOI; In bags, boxes, drums or Packages 128 or 2456, subject to Item 170 and having a density in pounds per cubic foot of:	
Sub 1	Less than 10.....	125
Sub 2	10 but less than 15.....	85
Sub 3	15 but less than 30.....	70
Sub 4	30 or greater.....	55
△73151	NOTE—Also applies on other ingredients or complement of accessories necessary for completion of the finished product when packaged in same box.	
73220	Food Curing, Preserving or Seasoning Compounds , NOI, etc...☒Cancel; see item 73260.	

ITEM	ARTICLE	CLASS
73260	<p>FOODSTUFFS GROUP: subject to item 72000</p> <p>Foodstuffs, other than frozen, Group IV, viz.:</p> <ul style="list-style-type: none"> ▶ Baby Food, NOI; Bakery Goods, NOI, also in Package 2428; ▶ Beverages or Drinks, NOI, or Beverage or Drink Preparations, NOI, see Note, item 73263, also in Packages 2330 or 2438; Coffee, Tea or Herbal Tea, NOI, see Note, item 73261, also in Packages 2330 or 2380; Cookies or Crackers, NOI, also in Package 2428; ▶ Cooking Spray, not required by the U.S. Department of Transportation to bear a Hazard Class or Hazard Division label or placard, see Note, item A-NEW; Desserts, Dessert Toppings or Related Foods, NOI, ▶ not required by the U.S. Department of Transportation to bear a Hazard Class or Hazard Division label or placard see Notes, item 73262 and A-NEW; ▶ Extracts, Flavoring Compounds, Imitation Flavors or Bottlers' Flavoring Compounds, NOI, not required by the U.S. Department of Transportation to bear a Hazard Class or Hazard Division label or placard, see Note, item A-NEW; ▶ Food Curing, Preserving or Seasoning Compounds, NOI; Foodstuffs, NOI, ▶ not required by the U.S. Department of Transportation to bear a Hazard Class or Hazard Division label or placard, see Note, item A-NEW; ▶ Gelatine or Pectin, NOI; ▶ Honey or Honeycomb, NOI; Hot Chocolate or Hot Cocoa Mixes; Juice, fruit or vegetable, including Juice Concentrates, Juice Beverages, Juice Drinks or Juice Powders or Crystals, see Note, item 73263, also in Packages 2438 or 2467; ▶ Oils, cooking or salad, NOI, or Vegetable Oil Shortening; ▶ Purees, fruit or vegetable, including Applesauce; Pasta or Noodles, with or without other ingredients; Rice, cleaned or prepared, NOI, with or without other ingredients; ▶ Shells, taco, or Tortillas; Snack Foods, NOI; Soups or Soup Mixes; ▶ Yeast, dry or liquid; <p>In bags, boxes, drums or Packages 128, 223, 510, 1000, 1400, 1500, 2093, 2231, 2404, 2414, 2416, 2421, 2425, 2463, 2498, 2499, 2500 or 2507, subject to Item 170 and having a density in pounds per cubic foot of:</p>	
Sub 1	Less than 1	400
Sub 2	1 but less than 2	300
Sub 3	2 but less than 4	250
Sub 4	4 but less than 6	175
Sub 5	6 but less than 8	125
Sub 6	8 but less than 10	100
Sub 7	10 but less than 12	92.5
Sub 8	12 but less than 15	85
Sub 9	15 but less than 22.5	70
Sub 10	22.5 but less than 30	65
Sub 11	30 or greater	60
△73261	NOTE—Also applies on: instant, soluble, freeze-dehydrated or freeze-dried coffee, tea or herbal tea; coffee, tea or herbal tea in premeasured servings, with or without integral filter; or Coffee Service Kits or Sets , consisting of coffee in premeasured servings, with or without integral filter, and with or without non-dairy creamer, sugar or artificial sweetener, stirrers, tea, herbal tea or hot chocolate in same box.	
73262	NOTE—Provisions for desserts, dessert toppings or related foods include, but are not limited to: Crusts , pie or tart; Dessert Mixes or Preparations , NOI; Dishes, Bowls, Ice Cream Cones or Shells , edible, NOI; Dough , prepared; ▶ Gelatine Dessert; ▶ Sauces or Toppings , ice cream or dessert, NOI, including Marshmallow Creme, Nuts (Nutmeats) in Syrup, or Sprinkles.	
73263	NOTE—Also applies on freeze-dehydrated or freeze-dried beverage ▶ or drink preparations, or juice powders or crystals.	
★A-NEW	NOTE—Does not apply on materials regulated by the U.S. Department of Transportation as hazardous and required to bear a Hazard Class or Hazard Division label or placard. For classes applicable to such hazardous materials, see provisions elsewhere in this Classification.	
73300	Fruit , in liquor or syrup containing over 5 percent alcohol, etc...☒Cancel; see item 73260.	
73340	Fruit or Fruit Peel , candied, crystallized, glazed or stuffed, NOI, etc...☒Cancel; see item 73260.	
73380	Gelatine or Pectin , NOI, etc...☒Cancel; see item 73260.	
73440	Honey , comb, in section frames, etc...☒Cancel; see item 73260.	
73450	Honey , NOI, etc...☒Cancel; see item 73260.	
73520	Jelly , corn syrup, etc...☒Cancel; see item 73260.	
73695	Kernels , corn, whole, roasted, salted or not salted, not popped, etc...☒Cancel; see item 73260.	
73705	Kernels or Seeds , pumpkin or sunflower, cooked, etc...☒Cancel; see item 73260.	
73810	Malt Extract , liquid, etc...☒Cancel; see item 73260.	
73820	Malt Extract , other than liquid, Malt Powder (Dehydrated Malt Syrup) , or Maltose (Malt Sugar) , etc. ...☒Cancel; see items 73150, 73260 and 74095.	
74000	Milk, Cream or Vegetable Oil Compounds (Dessert Toppings) , aerated, with or without flavoring or other ingredients, etc...☒Cancel; see items 73260 and 85880.	

ITEM	ARTICLE	CLASS
	FOODSTUFFS GROUP: subject to item 72000	
74060	Mixes , basic food sauce, or food dip, dry, see Note, item 74062, etc... <input type="checkbox"/> Cancel; see item 73260.	
74062	NOTE— <input type="checkbox"/> Cancel; no further application.	
74090	Molasses , dried (Powdered Molasses), without or with not to exceed 33 ¹ / ₃ percent of sugar, shortening or flour, etc... <input type="checkbox"/> Cancel; see item 74095.	
74095	Molasses or Syrups , not medicated, ►see Note, item B-NEW, viz.: Agave Syrup (Agave Nectar); Beverage or Fountain Syrup; Flavoring Syrup; Maple Syrup; Molasses , NOI; Syrup , corn, rye, sorghum or wheat, NOI; Syrup , malt or malted; Syrup , NOI; In boxes, drums or Packages 1000, 2035, 2288, 2402, 2463, 2467, 2498, 2499 or 2500	65
★B-NEW	NOTE—Also applies on dehydrated syrups.	
74120	Monosodium Glutamate , etc... <input type="checkbox"/> Cancel; see item 73260.	
74150	Mustard , ground, Mustard Meal , Mustard Flour or Mustard Bran , etc... <input type="checkbox"/> Cancel; see item 73260.	
74190	Oils , cooking or salad, NOI; Cooking Spray , not required by the U.S. Department of Transportation to bear a Hazard Class or Hazard Division label or placard, see Note, item 74191; or Vegetable Oil Shortening , etc... <input type="checkbox"/> Cancel; see item 73260.	
74191	NOTE— <input type="checkbox"/> Cancel; no further application.	
74200	Onions , French fried, etc... <input type="checkbox"/> Cancel; see item 73260.	
74310	Popcorn , shelled, not popped, with or without other ingredients, etc... <input type="checkbox"/> Cancel; see item 73260.	
74500	Prune Concentrate , etc... <input type="checkbox"/> Cancel; see item 73260.	
74510	Purees , fruit or vegetable, including Applesauce , etc... <input type="checkbox"/> Cancel; see item 73260.	
74540	Rice , brewers', etc... <input type="checkbox"/> Cancel; see item 73260.	
74660	Salt , common (Sodium Chloride), containing food curing, flavoring or preserving ingredients, whether or not subjected to actual smoking processes or chemically treated to simulate smoked salt, etc... <input type="checkbox"/> Cancel; see item 73260.	
74720	Sauerkraut , Sauerkraut Brine or Sauerkraut Juice , other than frozen, etc... <input type="checkbox"/> Cancel; see item 73260.	
74735	Shells , taco, corn meal, folded, hard, etc... <input type="checkbox"/> Cancel; see item 73260.	
74737	Shells , taco, or Tortillas , soft, etc... <input type="checkbox"/> Cancel; see item 73260.	
74740	Shortening , powdered, consisting of milk or whey solids and vegetable oil shortening or lard, with or without desiccated eggs or sugar, etc... <input type="checkbox"/> Cancel; see item 73260.	
74850	Soybeans , roasted, whole, halved or chopped, not ground, with or without flavoring or seasoning ingredients, etc... <input type="checkbox"/> Cancel; see item 73260.	
74860	Spice Base , consisting of grain products, without sugar, or with not more than 12 percent sugar, etc... <input type="checkbox"/> Cancel; see item 73260.	
74870	Sticks or Stirrers , beverage, with dry beverage preparation attached, etc... <input type="checkbox"/> Cancel; see item 73260.	
74890	Substitutes , sour cream, in a liquid, paste or semisolid state, other than frozen, etc... <input type="checkbox"/> Cancel; see item 73260.	
75070	Sugar Spread (Sugar and Glucose mixed) , etc... <input type="checkbox"/> Cancel; see item 73260.	
75120	Syrup , coloring, burnt sugar (caramel), etc... <input type="checkbox"/> Cancel; see item 74095.	
75140	Syrup , corn or potato (glucose), dehydrated, etc... <input type="checkbox"/> Cancel; see item 74095.	
75200	Tablespreads , vegetable oil base with flavoring, other than margarine, etc... <input type="checkbox"/> Cancel; see item 73260.	
75220	Tamales , etc... <input type="checkbox"/> Cancel; see item 73260.	
75245	Tenderizers , meat, liquid, etc... <input type="checkbox"/> Cancel; see item 73260.	
75300	Truffles , in glass jars, etc... <input type="checkbox"/> Cancel; see item 73260.	
75400	Vinegar , liquid, etc... <input type="checkbox"/> Cancel; see item 73260.	
75430	Wine , cooking, flavoring or seasoning (Wine , salted or sugared), etc... <input type="checkbox"/> Cancel; see item 73260.	
75470	Yeast , compressed or not compressed, other than dry or liquid, prepaid, etc... <input type="checkbox"/> Cancel; see item 73260.	
75480	Yeast , dry, etc... <input type="checkbox"/> Cancel; see item 73260.	
75490	Yeast , liquid, etc... <input type="checkbox"/> Cancel; see item 73260.	
	FRUITS OR VEGETABLES, DRIED, GROUP: subject to item 77000	
△77060	Beans , edible, NOI, in bags or boxes	65

ITEM	ARTICLE	CLASS
<p>△.85880</p> <p>△.85881</p> <p>△.85882</p> <p>△.85883</p>	<p>GASES OR CRYOGENIC LIQUIDS GROUP: subject to item 85500</p> <p>☉Gases, NOI, or Gas Mixtures, NOI, other than flammable or toxic, see Note, item 85881; in cargo tanks or steel cylinders, see Note, item 85882; or in containers in boxes, see Note, item 85883.....</p> <p>NOTE—</p> <ol style="list-style-type: none"> 1. Applies on materials regulated by the U.S. Department of Transportation as a Hazard Class 2, Division 2.2, Nonflammable Gas, as defined in 49 CFR §173.115 and required to bear a notice to that effect on bills of lading and packaging. 2. Does not apply when U.S. Department of Transportation regulations require shipping containers to bear a 2.1 'FLAMMABLE GAS' or 2.3 'INHALATION HAZARD' label. <p>NOTE—Neon, inert may be shipped in aluminum cylinders.</p> <p>NOTE—Liquefied helium may be shipped in doublewall vacuum insulated containers without additional packaging, subject to the following:</p> <ol style="list-style-type: none"> 1. When container exceeds 30 liters in capacity but does not exceed 100 liters capacity. 2. When container exceeds 100 liters capacity, container must be equipped with a base which will prevent rolling if container is laid on its side. When base is equipped with wheels, container must rest on two wheels and on immovable legs, skids or pad during transit. 3. When not constructed as described in paragraph (2), above, container body must be protected with a sleeve of solid fiberboard 1/4 inch or thicker or with material of equal or greater strength. Fiberboard may be laminated to form closely fitted vertical segments held together with a layer of fiberboard to facilitate forming around container body. 4. Valves, gauges and venting devices must not project above protective cage. 	<p>110</p>