

SUBJECT 20

Re: Cookware Group

Contact: Adam C. Mercer Telephone — (703) 838-1911 mercer@nmfta.org

Proponent: Freight Classification Development Council

Present Classification Provisions

Item	Description	Class
52860	COOKWARE GROUP: Articles consist of cooking, baking or heating utensils.	
52870	Broilers , iron or wire, NOI, flat or nested, in boxes or crates:	
Sub 1	With covers or drip pans	92.5
Sub 2	Without covers or drip pans.....	77.5
52880	Cookware or Bakeware , metal, NOI, with or without components or accessories of same or other materials, see Note, item 52881, in boxes or crates, subject to Item 170 and having a density in pounds per cubic foot of:	
Sub 1	Less than 1	400
Sub 2	1 but less than 2	300
Sub 3	2 but less than 4	250
Sub 4	4 but less than 6	175
Sub 5	6 but less than 8	125
Sub 6	8 but less than 10	100
Sub 7	10 but less than 12	92.5
Sub 8	12 but less than 15	85
Sub 9	15 but less than 22.5	70
Sub 10	22.5 but less than 30	65
Sub 11	30 or greater	60
52881	NOTE—Covers or other accessories may be in same or separate packages.	
52904	Corn Poppers , household, other than electric, in boxes.....	250
52910	Grids , frying, other than electric, in boxes:	
Sub 1	Aluminum or magnesium	85
Sub 2	Sheet steel, with handles detached and in same shipping containers.....	65
52920	Kettles , canning (Boilers or Retorts), iron	110
52940	Percolators , coffee, household, sheet steel, enameled, other than self-heating, in boxes.....	100
52950	Percolators , copper or sheet steel, NOI, other than electric, in boxes or crates	100
52960	Pressure Cookers , household, other than electric, in boxes.....	100
52980	Sets , baking or cooking, consisting of glass baking dishes and plastic microwave cooking dishes or racks, with or without glass mixing bowl, in boxes	85
52990	Teakettles , brass, bronze or copper, other than electric, in boxes or crates.....	100

SUBJECT 20

Proposed Classification Provisions

Item	Description	Class
52860	COOKWARE GROUP , etc	⇒Cancel; no further application
52870	Broilers , iron or wire, NOI, flat or nested, etc	⇒Cancel; see item 52880
⇒52880	Cookware or Bakeware , metal, NOI, other than electric or gas, with or without components or accessories of same or other materials, see Notes, items 52881 and NEW, in boxes or crates, subject to Item 170 and having a density in pounds per cubic foot of:	
Sub 1	Less than 1	400
Sub 2	1 but less than 2	300
Sub 3	2 but less than 4	250
Sub 4	4 but less than 6	175
Sub 5	6 but less than 8	125
Sub 6	8 but less than 10	100
Sub 7	10 but less than 12	92.5
Sub 8	12 but less than 15	85
Sub 9	15 but less than 22.5	70
Sub 10	22.5 but less than 30	65
Sub 11	30 or greater	60
52881	NOTE—No Change.	
⇒NEW	NOTE—Also applies on Percolators or Teakettles , other than electric or gas.	
52904	Corn Poppers , household, other than electric, etc	⇒Cancel; see item 52880
52910	Griddles , frying, other than electric, etc	⇒Cancel; see item 52880
52920	Kettles , canning (Boilers or Retorts), iron	⇒Cancel; see item 52880
52940	Percolators , coffee, household, sheet steel, enameled, other than self-heating, etc	⇒Cancel; see item 52880
52950	Percolators , copper or sheet steel, NOI, other than electric, etc	⇒Cancel; see item 52880
52960	Pressure Cookers , household, other than electric, etc	⇒Cancel; see item 52880
52980	Sets , baking or cooking, consisting of glass baking dishes and plastic microwave cooking dishes or racks, with or without glass mixing bowl, etc.....	⇒Cancel; see provisions otherwise applicable
52990	Teakettles , brass, bronze or copper, other than electric, etc	⇒Cancel; see item 52880

SUBJECT 20

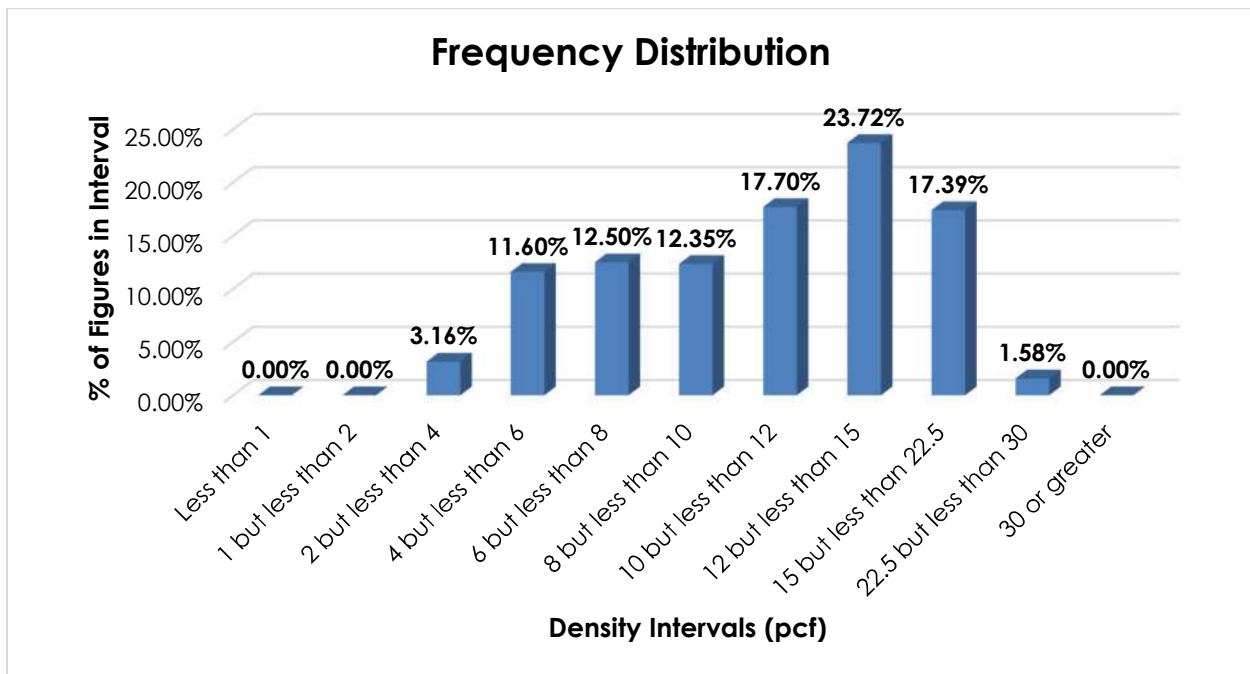
Analysis

Introduction

This proposal is based on a review of the Cookware Group. The transportation characteristics below relate to items 52870, 52904, 52910, 52920, 52940, 52950, 52960 and 52990, as shown in the Present Classification Provisions herein.

Transportation Characteristics

Density—The information of record includes 1,331 density observations obtained from the FCDC’s Density Study¹. The densities range from 2.20 to 25.82 pcf, with an overall average density of 11.15 pcf. As shown in the graph below, the densities are widely distributed throughout most of the range.



Handling, Stowability and Liability—There have been no reports of unusual or significant handling, stowability or liability concerns.

¹ The Density Study is part of an ongoing effort by the FCDC to collect information on actual shipments across all product categories handled by the LTL industry. Carriers that choose to participate in the Study periodically submit shipment data captured through their respective freight auditing programs. The FCDC uses verifiable data points, identified by NMFC item, that include the weight and the dimensions and/or cube of the shipping unit.

SUBJECT 20**Conclusion**

Based on the foregoing analysis, items 52870, 52904, 52910, 52920, 52940, 52950, 52960 and 52990 would be canceled with reference to the full-scale, density-based provisions of item 52880². The generic heading, item 52860, would be canceled with no further application, and the indentation of item 52880 would be adjusted accordingly. These changes would foster clarification and simplification.

A new attendant Note would be established to clarify the application of item 52880.

Additionally, item 52980 would be canceled with reference to provisions otherwise applicable.

² Item 52880 provides the FCDC's standard 11-subprovision density scale, which includes reference to Item (Rule) 170, the inadvertence clause.