

SUBJECT 19

Re: Graphite Articles, NOI — Item 89935

Contact: Larissa A. Franklin Telephone — (703) 838-1824 franklin@nmfta.org

Proponent: Freight Classification Development Council

Present Classification Provisions

Item	Description	Class
	GRAPHITE ARTICLES GROUP: subject to item 89850	
89935	Graphite Articles , NOI, in boxes or crates, see Note, item 89937:	
Sub 1	Actual value not exceeding \$3.85 per pound.....	70
Sub 2	Actual value exceeding \$3.85 per pound but not exceeding \$7.70 per pound.....	85
Sub 3	Actual value exceeding \$7.70 per pound but not exceeding \$12.85 per pound.....	100
Sub 4	Actual value exceeding \$12.85 per pound but not exceeding \$19.25 per pound.....	150
Sub 5	Actual value exceeding \$19.25 per pound but not exceeding \$25.50 per pound.....	200
Sub 6	Actual value exceeding \$25.50 per pound	300
89937	NOTE—Shipper must certify on shipping orders and bills of lading at time of shipment the actual value per pound of the property. If shipper fails to certify the actual value per pound, shipment will not be accepted, but if shipment is inadvertently accepted, charges will initially be assessed on the basis of the class for the highest valuation provided. Upon proof of lower actual value, freight charges will be adjusted to the basis of the class applicable in connection with such actual value.	

Proposed Classification Provisions

Item	Description	Class
	GRAPHITE ARTICLES GROUP: subject to item 89850	
⇒89935	Graphite Articles , NOI, in boxes or crates, subject to Item 170 and having a density in pounds per cubic foot of:	
Sub 1	Less than 1	400
Sub 2	1 but less than 2	300
Sub 3	2 but less than 4	250
Sub 4	4 but less than 6	175
Sub 5	6 but less than 8	125
Sub 6	8 but less than 10	100
Sub 7	10 but less than 12	92.5
Sub 8	12 but less than 15	85
Sub 9	15 but less than 22.5	70
Sub 10	22.5 but less than 30	65
Sub 11	30 or greater	60

SUBJECT 19

Proposed Classification Provisions — Concluded

Item	Description	Class
89937	NOTE—⇨Cancel; no further application.	

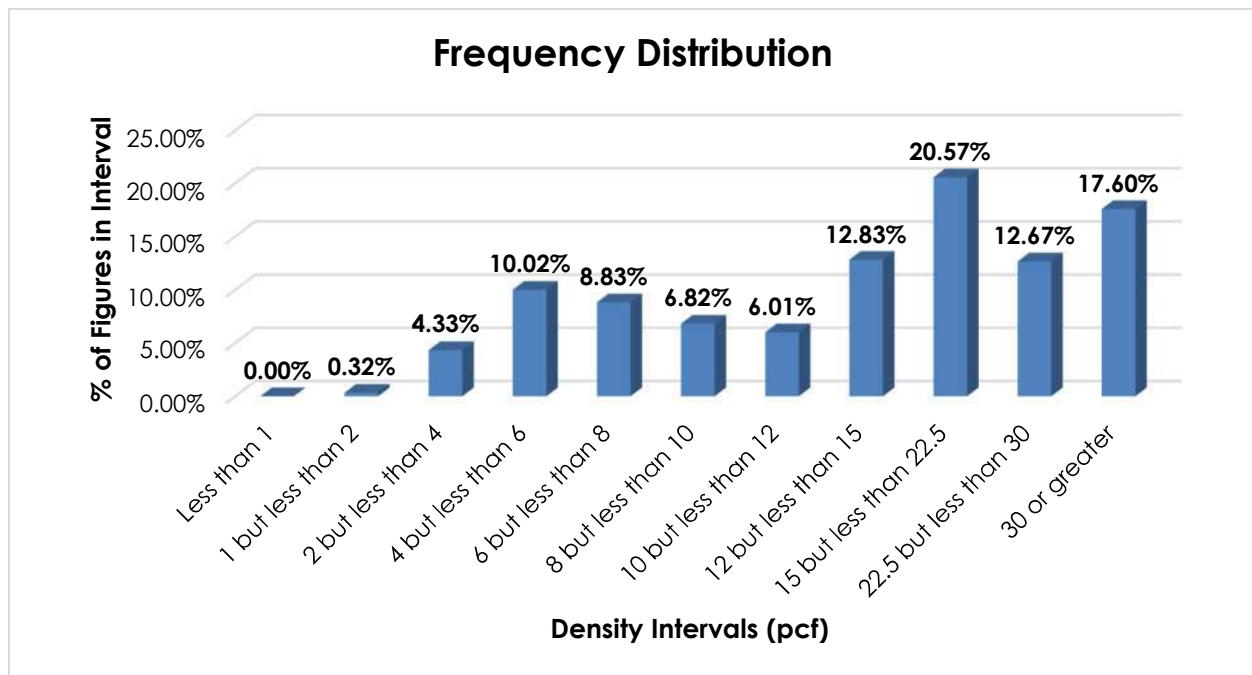
Analysis

Introduction

This proposal is in response to a request to review item 89935, naming “Graphite Articles, NOI.”

Transportation Characteristics

Density—The information of record includes 1,847 density observations submitted by a carrier and obtained from the FCDC’s Density Study¹. The densities range from 1.16 to 75.55 pcf, with an overall average density of 18.84 pcf. As shown in the graph below, the densities are widely distributed throughout the range.



Handling, Stowability and Liability—There have been no reports of unusual or significant handling, stowability or liability concerns.

¹ The Density Study is part of an ongoing effort by the FCDC to collect information on actual shipments across all product categories handled by the LTL industry. Carriers that choose to participate in the Study periodically submit shipment data captured through their respective freight auditing programs. The FCDC uses verifiable data points, identified by NMFC item, that include the weight and the dimensions and/or cube of the shipping unit.

SUBJECT 19**Conclusion**

Based on the foregoing analysis, item 89935 would be amended to provide the FCDC's standard 11-subprovision density scale².

Note, item 89937 would be canceled with no further application.

² The FCDC's standard 11-subprovision density scale includes reference to Item (Rule) 170, the inadvertence clause.