

SUBJECT 18

Re: Grain Group

Contact: Angela L. Li Telephone — (703) 838-1882 angela.li@nmfta.org

Proponent: Freight Classification Development Council

Present Classification Provisions

Item	Description	Class
89000	GRAIN GROUP: see Note, item 89012	
89012	NOTE—Will not apply on grain represented as 'seed.' Certified seed, or grain represented as seed, or grain treated with inoculating bacteria, growth stimulants, insecticides or fungicides shall be classed as 'Seed corn or seed grain, NOI.'	
89030	Barley , in bags, boxes or drums	50
89050	Buckwheat , in bags, boxes or drums	50
89070	Corn , NOI, shelled or not shelled, in bags, boxes or drums, also not shelled, in crates	50
89100	Grain Sorghums , such as durra, feterita, kafir, kaoliang, milo or shallu, in bags, boxes or drums	50
89130	Oats , in bags, boxes or drums	50
89150	Popcorn , not popped, NOI, in the ear, in bulk in bags, boxes or drums.....	60
89170	Rye , in bags, boxes or drums.....	50
89190	Spelt , in bags, boxes or drums.....	50
89210	Wheat , in bags, boxes or drums	50

Proposed Classification Provisions

Item	Description	Class
89000	GRAIN GROUP , etc.....	⇒Cancel; no further application
89012	NOTE—⇒Cancel; see item B-NEW.	
89030	Barley , etc.....	⇒Cancel; see item A-NEW
89050	Buckwheat , etc	⇒Cancel; see item A-NEW
89070	Corn , NOI, shelled or not shelled, etc	⇒Cancel; see item A-NEW
89100	Grain Sorghums , such as durra, feterita, kafir, kaoliang, milo or shallu, etc	⇒Cancel; see item A-NEW
89130	Oats , etc.....	⇒Cancel; see item A-NEW

SUBJECT 18

Proposed Classification Provisions — Concluded

Item	Description	Class
	GRAIN GROUP: subject to item 89000	
89150	Popcorn , not popped, NOI, in the ear, etc.....	⇒Cancel; see item A-NEW
89170	Rye , etc	⇒Cancel; see item A-NEW
89190	Spelt , etc	⇒Cancel; see item A-NEW
89210	Wheat , etc	⇒Cancel; see item A-NEW
⇒A-NEW	Grain , see Note, item B-NEW, viz.: Barley; Corn; Grain , NOI; Oats; Rye; Wheat; In bags, boxes or drums	65
⇒B-NEW	NOTE—Does not apply on grain represented as 'seed.' For applicable provisions, see item 173720.	

Analysis

Introduction

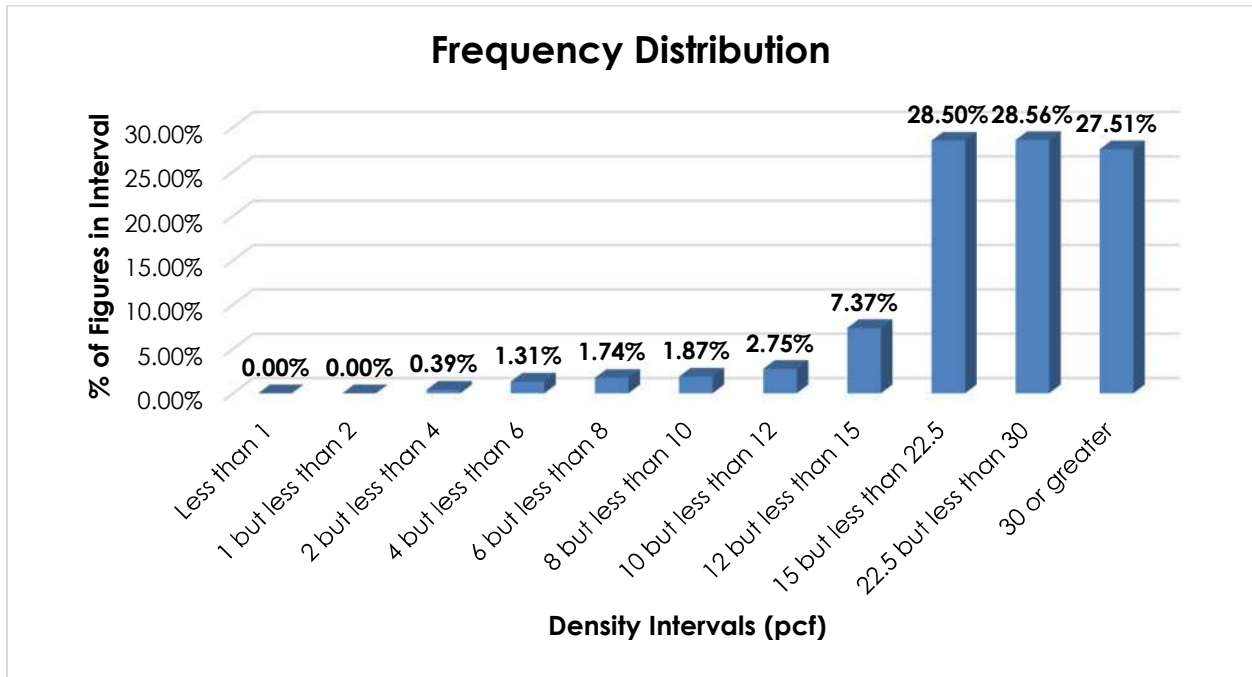
This proposal is based on information developed during a review of the Grain Group.

Transportation Characteristics

Density—The information of record includes 3,053 density observations obtained from the FCDC's Density Study¹. The densities range from 3.10 to 53.34 pcf, with an overall average density of 24.76 pcf. As shown in the graph on the following page, the density distribution is left-skewed, with over 84% of the figures 15 pcf or greater.

¹ The Density Study is part of an ongoing effort by the FCDC to collect information on actual shipments across all product categories handled by the LTL industry. Carriers that choose to participate in the Study periodically submit shipment data captured through their respective freight auditing programs. The FCDC uses verifiable data points, identified by NMFC item, that include the weight and the dimensions and/or cube of the shipping unit.

SUBJECT 18



Handling, Stowability and Liability—As with other food, care must be taken to avoid stowing the involved commodities with hazardous materials or other freight that may pose a contamination risk. They may also be damaged by freight with which stowed or by the elements. However, there have been no reports of unusual or significant handling, stowability or liability issues.

Conclusion

Based on the foregoing analysis, and in the interest of clarification and simplification, this proposal would cancel items 89030, 89050, 89070, 89100, 89130, 89150, 89170, 89190 and 89210 with reference to a new item, naming "Grain" with a "viz." format, at class 65.

The generic heading, item 89000, would be canceled with no further application. Note, item 89012 would be canceled with reference to a new Note attendant to the new item.

The FCDC's Packaging Manager has reviewed the proposed minimum packaging requirements and determined that they are appropriate for the LTL environment.