

**SUBJECT 16**

**Re:** Fibers

**Contact:** Angela L. Li Telephone — (703) 838-1882 angela.li@nmfta.org

**Proponent:** Freight Classification Development Council

**Present Classification Provisions**

Item	Description	Class
68200	<b>FIBERS:</b>	
68210	<b>Absorbent</b> , cotton, NOI, in bales, boxes or drums, subject to Item 170 and having a density in pounds per cubic foot of:	
Sub 1	Less than 6 .....	200
Sub 2	6 or greater .....	100
68240	<b>Caroa (Coroa)</b> , in machine pressed bales.....	65
68260	<b>Casein</b> , in packages, subject to Item 170 and having a density in pounds per cubic foot of:	
Sub 1	Less than 6 .....	200
Sub 2	6 or greater .....	100
68280	<b>Coconut Husk (Cocoa or Coir Fiber)</b> , brush ( <b>Brush Making</b> ):	
Sub 1	In packages not machine pressed .....	200
Sub 2	In machine pressed bales .....	85
68290	<b>Coconut Husk (Cocoa or Coir Fiber)</b> , curled ( <b>Coir Hair</b> ), in bags or bales .....	200
68300	<b>Coconut Husk (Cocoa or Coir Fiber)</b> , NOI:	
Sub 1	In bundles, or in bales not machine compressed.....	200
Sub 2	In bales machine compressed to less than 20 pounds per cubic foot, subject to Item 170.....	85
Sub 3	In bales machine compressed to 20 pounds or more per cubic foot, subject to Item 170.....	55
68310	<b>Fibers</b> , NOI, see Note, item 68311, in bags, bales or boxes, subject to Item 170 and having a density in pounds per cubic foot of:	
Sub 1	Less than 1 .....	400
Sub 2	1 but less than 2 .....	300
Sub 3	2 but less than 4 .....	250
Sub 4	4 but less than 6 .....	175
Sub 5	6 but less than 8 .....	125
Sub 6	8 but less than 10 .....	100
Sub 7	10 but less than 12 .....	92.5
Sub 8	12 but less than 15 .....	85
Sub 9	15 but less than 22.5 .....	70
Sub 10	22.5 but less than 30 .....	65
Sub 11	30 or greater .....	60
68311	NOTE—Also applies on <b>Cotton, Wool or Synthetic Fiber Nubs.</b>	
68320	<b>Flax:</b>	
Sub 1	On cores or tubes in bales, or in machine pressed bales .....	85
Sub 2	Other than on cores or tubes in bales not machine pressed .....	100

SUBJECT 16

Present Classification Provisions — Concluded

Item	Description	Class
	<b>FIBERS:</b> subject to item 68200	
68340	<b>Grass Fiber</b> , NOI, in machine pressed bales.....	85
68360	<b>Hemp</b> , in bales.....	70
68380	<b>Istle (Tampico)</b> , subject to Item 170:	
Sub 1	In bags; or in bales compressed to less than 8 pounds per cubic foot ....	200
Sub 2	In bales compressed to 8 pounds but less than 12 pounds per cubic foot .....	100
Sub 3	In bales compressed to 12 pounds but less than 15 pounds per cubic foot .....	85
Sub 4	In bales compressed to 15 pounds or greater per cubic foot.....	70
68400	<b>Jute, Jute Lashing, Jute Rejections or Benares Sunn</b> , in bags or bales .....	65
68420	<b>Kapok</b> , in packages, subject to Item 170 and having a density in pounds per cubic foot of:	
Sub 1	Less than 6 .....	200
Sub 2	6 but less than 12 .....	100
Sub 3	12 but less than 15 .....	85
Sub 4	15 or greater .....	70
68430	<b>Manila or Sisal</b> , in bales.....	70
68440	<b>Milkweed Floss</b> , in bales.....	150
68460	<b>Palm or Palmetto</b> , other than broom splints, in bags, bales, boxes or crates...70	
68500	<b>Plastering</b> , NOI:	
Sub 1	In bags.....	85
Sub 2	In machine pressed bales.....	70
68520	<b>Plastering</b> , wood, in bags or in machine pressed bales.....	70
68540	<b>Ramie (China Grass Fiber)</b> , in bales:	
Sub 1	Degummed.....	85
Sub 2	Not degummed.....	70
68550	<b>Steel</b> , not over 1/4 inch in length, in boxes.....	60
68560	<b>Tow</b> , flax, in bales.....	70
68580	<b>Typha</b> , not processed:	
Sub 1	In bags or bales not machine pressed .....	85
Sub 2	In machine pressed bales.....	70
68600	<b>Yucca</b> , in bags, boxes, crates or machine pressed bales .....	70
68620	<b>Zacaton (Mexican Rice Root)</b> , in bales .....	85

Proposed Classification Provisions

Item	Description	Class
68200	<b>FIBERS:</b> .....	⇒Cancel; no further application

SUBJECT 16

Proposed Classification Provisions — Continued

Item	Description	Class
	<b>FIBERS:</b> subject to item 68200	
68210	<b>Absorbent</b> , cotton, NOI, etc .....	⇒Cancel; see item 68310
68240	<b>Caroa (Coroa)</b> , etc .....	⇒Cancel; see item 68310
68260	<b>Casein</b> , etc.....	⇒Cancel; see item 68310
68280	<b>Coconut Husk (Cocoa or Coir Fiber)</b> , brush ( <b>Brush Making</b> ), etc.....	⇒Cancel; see item 68310
68290	<b>Coconut Husk (Cocoa or Coir Fiber)</b> , curled ( <b>Coir Hair</b> ), etc .....	⇒Cancel; see item 68310
68300	<b>Coconut Husk (Cocoa or Coir Fiber)</b> , NOI, etc .....	⇒Cancel; see item 68310
⇒68310	<b>Fibers</b> , NOI, see Note, item 68311, in bags, bales or boxes, subject to Item 170 and having a density in pounds per cubic foot of:	
Sub 1	Less than 1 .....	400
Sub 2	1 but less than 2 .....	300
Sub 3	2 but less than 4 .....	250
Sub 4	4 but less than 6 .....	175
Sub 5	6 but less than 8 .....	125
Sub 6	8 but less than 10 .....	100
Sub 7	10 but less than 12 .....	92.5
Sub 8	12 but less than 15 .....	85
Sub 9	15 but less than 22.5 .....	70
Sub 10	22.5 but less than 30 .....	65
Sub 11	30 or greater .....	60
68311	NOTE—No Change.	
68320	<b>Flax</b> , etc.....	⇒Cancel; see item 68310
68340	<b>Grass Fiber</b> , NOI, etc .....	⇒Cancel; see item 68310
68360	<b>Hemp</b> , etc .....	⇒Cancel; see item 68310
68380	<b>Istle (Tampico)</b> , etc .....	⇒Cancel; see item 68310
68400	<b>Jute, Jute Lashing, Jute Rejections or Benares Sunn</b> , etc.....	⇒Cancel; see item 68310
68420	<b>Kapok</b> , etc .....	⇒Cancel; see item 68310
68430	<b>Manila or Sisal</b> , etc .....	⇒Cancel; see item 68310

**SUBJECT 16**

**Proposed Classification Provisions — Concluded**

Item	Description	Class
	<b>FIBERS:</b> subject to item 68200	
68440	<b>Milkweed Floss</b> , etc .....	⇒Cancel; see item 68310
68460	<b>Palm or Palmetto</b> , other than broom splints, etc .....	⇒Cancel; see item 68310
68500	<b>Plastering</b> , NOI, etc.....	⇒Cancel; see item 68310
68520	<b>Plastering</b> , wood, etc .....	⇒Cancel; see item 68310
68540	<b>Ramie (China Grass Fiber)</b> , etc .....	⇒Cancel; see item 68310
68550	<b>Steel</b> , not over 1/4 inch in length, etc .....	⇒Cancel; see item 68310
68560	<b>Tow</b> , flax, etc .....	⇒Cancel; see item 68310
68580	<b>Typha</b> , not processed, etc.....	⇒Cancel; see item 68310
68600	<b>Yucca</b> , etc .....	⇒Cancel; see item 68310
68620	<b>Zacaton (Mexican Rice Root)</b> , etc.....	⇒Cancel; see item 68310

**Analysis**

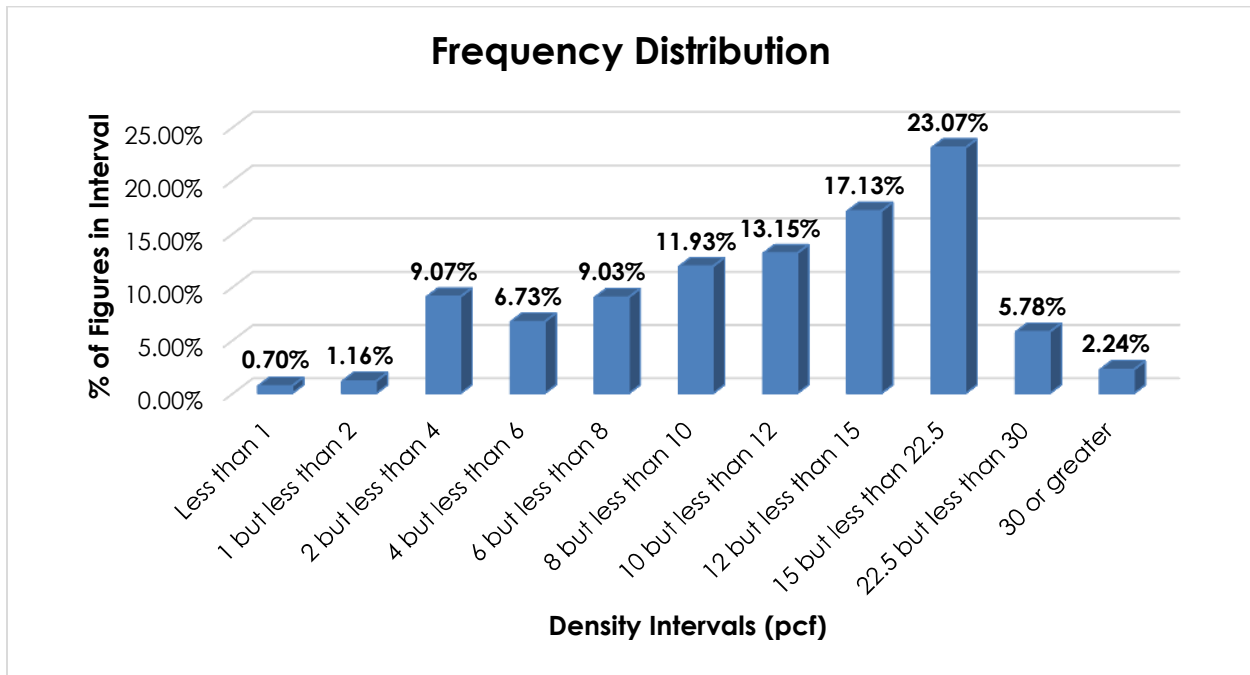
**Introduction**

This proposal is based on information developed during a review of the Fibers generic heading. The transportation characteristics below relate to items 68210, 68240, 68260, 68280, 68290, 68300, 68320, 68340, 68360, 68380, 68400, 68420, 68430, 68440, 68460, 68500, 68520, 68540, 68550, 68560, 68580, 68600 and 68620, as shown in the Present Classification Provisions herein.

SUBJECT 16

Transportation Characteristics

**Density**—The information of record includes 4,828 density observations obtained from the FCDC’s Density Study<sup>1</sup>. The densities range from 0.55 to 44.58 pcf, with an overall average density of 12.57 pcf. As shown in the graph below, the density figures are widely distributed throughout most of the range.



**Handling, Stowability and Liability**—There have been no reports of unusual or significant handling, stowability or liability concerns.

Conclusion

Based on the foregoing analysis, and in the interest of clarification and simplification, this proposal would cancel items 68210, 68240, 68260, 68280, 68290, 68300, 68320, 68340, 68360, 68380, 68400, 68420, 68430, 68440, 68460, 68500, 68520, 68540, 68550, 68560, 68580, 68600 and 68620 with reference to the full-scale, density-based provisions of item 68310<sup>2</sup>.

The generic heading, item 68200, would be canceled with no further application, and the indentation of item 68310 would be adjusted accordingly.

<sup>1</sup> The Density Study is part of an ongoing effort by the FCDC to collect information on actual shipments across all product categories handled by the LTL industry. Carriers that choose to participate in the Study periodically submit shipment data captured through their respective freight auditing programs. The FCDC uses verifiable data points, identified by NMFC item, that include the weight and the dimensions and/or cube of the shipping unit.

<sup>2</sup> Item 68310 provides the FCDC’s standard 11-subprovision density scale, which includes reference to Item (Rule) 170, the inadvertence clause.

**SUBJECT 16**

The FCDC's Packaging Manager has reviewed the proposed minimum packaging requirements and determined that they are appropriate for the LTL environment.