

SUBJECT 15

Re: Pallets Group

Contact: Angela L. Li Telephone — (703) 838-1882 angela.li@nmfta.org

Proponent: Freight Classification Development Council

Present Classification Provisions

Item	Description	Class
150300	PALLETS GROUP: Articles consist of Pallets, Platforms, Shipping Racks or Skids, as described in items subject to this grouping.	
150310	Carriers or Pallets, flexible intermediate bulk container, constructed of corrugated fiberboard, paperboard or pulpboard sheets with halved fiberboard, paperboard or pulpboard tubes, assembled or unassembled, in packages, subject to Item 170 and having a density in pounds per cubic foot of:	
Sub 1	Less than 6	200
Sub 2	6 but less than 12	110
Sub 3	12 or greater	70
150345	Pallets, shipping, molded wood fiber or wood particles, with plastic resin binder, nested	70
150370	Pallets, Platforms or Skids, for lift trucks, aluminum, with or without wooden or steel reinforcement:	
Sub 1	Without standing enclosures, ends, sides, stakes or standards:	
Sub 2	Not interlaced	200
Sub 3	Interlaced	70
Sub 4	With standing enclosures, ends, sides, stakes or standards	200
Sub 5	With enclosures, ends, sides, stakes or standards KD or removed and secured to base	70
150380	Pallets, Platforms or Skids, for lift trucks, corrugated fiberboard combined with corrugated fiberboard-faced wood, veneer or plywood, in sheets, not assembled nor set up for use	85
150390	Pallets; Platforms; Racks, shipping, NOI; or Skids; for lift trucks, plastic, steel or wood, with or without bodies, enclosures, ends, sides, stakes, standards or stacking posts, see Notes, items 150391 and 150392, subject to Item 170 and having a density in pounds per cubic foot of:	
Sub 1	Less than 1	400
Sub 2	1 but less than 2	300
Sub 3	2 but less than 4	250
Sub 4	4 but less than 6	175
Sub 5	6 but less than 8	125
Sub 6	8 but less than 10	100
Sub 7	10 but less than 12	92.5
Sub 8	12 but less than 15	85
Sub 9	15 but less than 22.5	70
Sub 10	22.5 but less than 30	65
Sub 11	30 or greater	60

SUBJECT 15

Present Classification Provisions — Concluded

Item	Description	Class
	PALLETS GROUP: subject to item 150300	
150391	NOTE—Pallets, platforms, shipping racks or skids with set-up or standing bodies, enclosures, ends, sides, stakes, standards or stacking posts may be equipped with interior packing forms, trays or devices when contained within the pallets, platforms, shipping racks or skids which they are intended to equip.	
150392	NOTE—Also applies on Spill Containment Pallets with integral reservoirs or receptacles to contain escaped materials.	
150430	Pallets, Platforms or Skids , for lift trucks, fiberboard, paperboard or pulpboard, with KD flat bodies or enclosures or without bodies or enclosures, in packages:	
Sub 1	NOI.....	250
Sub 2	Unassembled, decks in sheet form with legs unattached and nested.....	110
150433	Pallets or Platforms , for lift trucks, corrugated fiberboard, paperboard or pulpboard with molded plastic legs, nested, in packages	77.5
150435	Pallets or Platforms , for lift trucks, fiberboard and cellular, expanded or foam plastic combined, assembled, loose or in bundles, or disassembled, in boxes or bundles	300

Proposed Classification Provisions

Item	Description	Class
150300	PALLETS GROUP , etc	⇒Cancel; no further application
150310	Carriers or Pallets , flexible intermediate bulk container, constructed of corrugated fiberboard, paperboard or pulpboard sheets with halved fiberboard, paperboard or pulpboard tubes, assembled or unassembled, etc.....	⇒Cancel; see item NEW
150345	Pallets , shipping, molded wood fiber or wood particles, with plastic resin binder, etc	⇒Cancel; see item NEW
150370	Pallets, Platforms or Skids , for lift trucks, aluminum, with or without wooden or steel reinforcement, etc	⇒Cancel; see item NEW
150380	Pallets, Platforms or Skids , for lift trucks, corrugated fiberboard combined with corrugated fiberboard-faced wood, veneer or plywood, etc.....	⇒Cancel; see item NEW

SUBJECT 15

Proposed Classification Provisions — Concluded

Item	Description	Class
	PALLETS GROUP: subject to item 150300	
150390	Pallets; Platforms; Racks, shipping, NOI; or Skids; for lift trucks, plastic, steel or wood, with or without bodies, enclosures, ends, sides, stakes, standards or stacking posts, see Notes, items 150391 and 150392, etc ⇒Cancel; see item NEW	
150391	NOTE—⇒Cancel; no further application.	
150392	NOTE—⇒Cancel; no further application.	
150430	Pallets, Platforms or Skids, for lift trucks, fiberboard, paperboard or pulpboard, etc..... ⇒Cancel; see item NEW	
150433	Pallets or Platforms, for lift trucks, corrugated fiberboard, paperboard or pulpboard with molded plastic legs, etc ⇒Cancel; see item NEW	
150435	Pallets or Platforms, for lift trucks, fiberboard and cellular, expanded or foam plastic combined, etc..... ⇒Cancel; see item NEW	
⇒NEW	Pallets, Platforms, Skids or Shipping Racks, NOI, for lift trucks, with or without bodies, enclosures, ends, sides, stakes, standards or stacking posts, subject to Item 170 and having a density in pounds per cubic foot of:	
Sub 1	Less than 1.....	400
Sub 2	1 but less than 2.....	300
Sub 3	2 but less than 4.....	250
Sub 4	4 but less than 6.....	175
Sub 5	6 but less than 8.....	125
Sub 6	8 but less than 10.....	100
Sub 7	10 but less than 12.....	92.5
Sub 8	12 but less than 15.....	85
Sub 9	15 but less than 22.5.....	70
Sub 10	22.5 but less than 30.....	65
Sub 11	30 or greater.....	60

Analysis

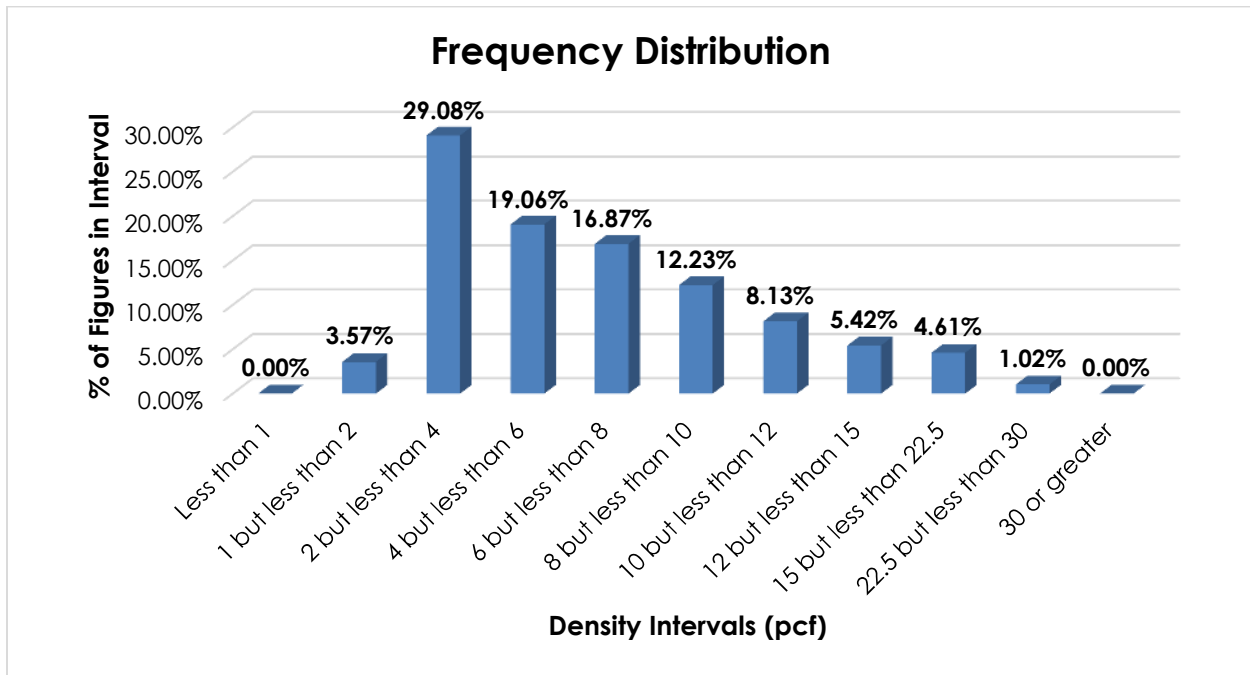
Introduction

There are numerous items subject to the Pallets Group that name particular types of pallets, platforms, skids or shipping racks, and these provisions can be difficult to interpret, apply or verify. Moreover, the involved commodities exhibit a wide range of densities. The transportation characteristics below relate to items 150310, 150345, 150370, 150380, 150390, 150430, 150433 and 150435, as shown in the Present Classification Provisions herein.

SUBJECT 15

Transportation Characteristics

Density—The information of record includes 43,728 density observations obtained from the FCDC’s Density Study¹. The densities range from 1.00 to 25.90 pcf, with an overall average density of 6.89 pcf. As shown in the graph below, the density distribution is right-skewed, with figures distributed throughout the range.



Handling, Stowability and Liability—There have been no reports of unusual or significant handling, stowability or liability concerns.

Conclusion

Based on the foregoing analysis, items 150310, 150345, 150370, 150380, 150390, 150430, 150433 and 150435 would be canceled with reference to a new item, naming “Pallets, Platforms, Skids or Shipping Racks, NOI,” with classes predicated on the FCDC’s standard 11-subprovision density scale².

The generic heading, item 150300, and Notes, items 150391 and 150392 would be canceled as having no further application.

¹ The Density Study is part of an ongoing effort by the FCDC to collect information on actual shipments across all product categories handled by the LTL industry. Carriers that choose to participate in the Study periodically submit shipment data captured through their respective freight auditing programs. The FCDC uses verifiable data points, identified by NMFC item, that include the weight and the dimensions and/or cube of the shipping unit.

² The FCDC’s standard 11-subprovision density scale includes reference to Item (Rule) 170, the inadvertence clause.