

SUBJECT 14

Re: Covers, automobile hood, radiator, spring, steering wheel, tire, top or seat — Items 18460 and 18462

Contact: Adam C. Mercer Telephone — (703) 838-1911 mercer@nmfta.org

Proponent: Freight Classification Development Council

Present Classification Provisions

Item	Description	Class
	AUTOMOBILE PARTS GROUP: subject to item 17800	
18460	Covers, hood, radiator, spring, steering wheel, tire or top, artificial leather, cloth, fiber, oilcloth or rubber, in boxes or wrapped in fiberboard	100
18462	Covers, seat, in boxes, subject to Item 170 and having a density in pounds per cubic foot of:	
Sub 1	Less than 8	200
Sub 2	8 or greater	100

Proposed Classification Provisions

Item	Description	Class
	AUTOMOBILE PARTS GROUP: subject to item 17800	
⇒18460	Covers, seat, radiator, spring, steering wheel, tire, top or hood, including Front-End Bras, in boxes.....	175
18462	Covers, seat, etc	⇒Cancel; see item 18460

Analysis

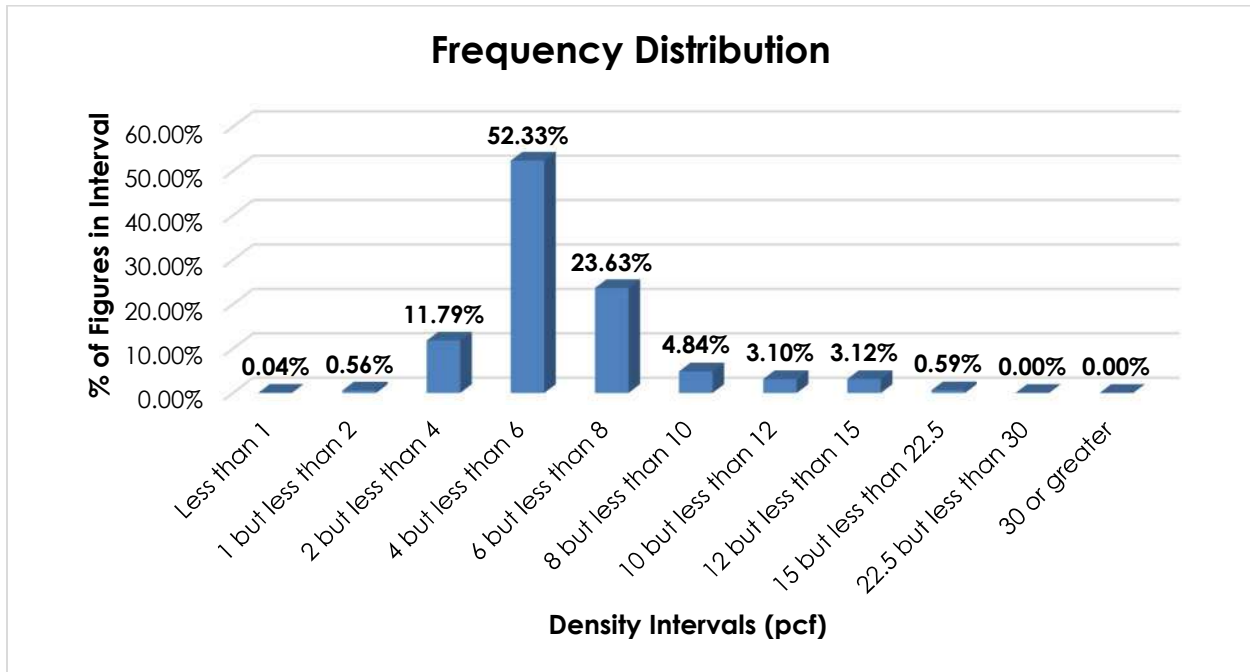
Introduction

This proposal is based on information developed through Research Project 1497, which was initiated to review the transportation characteristics of automobile covers, as embraced by item 18460. The project was later expanded to include item 18462.

SUBJECT 14

Transportation Characteristics

Density—The information of record includes 5,574 density observations submitted by carriers and obtained from the FCDC’s Density Study¹. The densities range from 0.38 to 16.52 pcf, with an overall average density of 5.94 pcf. As shown in the graph below, the densities are tightly clustered around the average, with almost 76% of the figures falling between 4 and 8 pcf, and almost 88% of the figures falling between 2 and 8 pcf.



Handling, Stowability and Liability—There have been no reports of unusual or significant handling, stowability or liability concerns.

Conclusion

Based on the foregoing analysis, this proposal would cancel item 18462 with reference to item 18460. Concurrently, item 18460 would be amended to assign class 175. In the interest of clarification and simplification, the description of item 18460 would also be amended to read, “Covers, seat, radiator, spring, steering wheel, tire, top or hood, including Front-End Bras.”

The FCDC’s Packaging Manager has reviewed the proposed minimum packaging requirements and determined that they are appropriate for the LTL environment.

¹ The Density Study is part of an ongoing effort by the FCDC to collect information on actual shipments across all product categories handled by the LTL industry. Carriers that choose to participate in the Study periodically submit shipment data captured through their respective freight auditing programs. The FCDC uses verifiable data points, identified by NMFC item, that include the weight and the dimensions and/or cube of the shipping unit.