

SUBJECT 13

Re: Devices or Converters, catalytic, internal combustion engine exhaust system — Item 57170

Contact: Adam C. Mercer Telephone — (703) 838-1911 mercer@nmfta.org

Proponent: Freight Classification Development Council

Present Classification Provisions

Item	Description	Class
57170	Devices or Converters , catalytic, internal combustion engine exhaust system, in boxes, crates or on pallets	85
	MACHINERY GROUP: subject to item 114000	
125850	Mufflers, Exhaust Systems, Automobile Pipe, Surge Suppressors and related articles, viz.: Automobile Pipe or Tubing , steel, copper plate or terne plate, straight or bent, further processed than cut to length, see Note, item 125853; Exhaust Systems , internal combustion engine, see Note, item 125851; Hydraulic Accumulators; Industrial Noise, Pulsation or Surge Suppressors or Silencers , see Note, item 125852; Mufflers, Resonators, Spark Arresters or Silencers , internal combustion engine; In packages, subject to Item 170 and having a density in pounds per cubic foot of:	
Sub 1	Less than 1	400
Sub 2	1 but less than 2.....	300
Sub 3	2 but less than 4.....	250
Sub 4	4 but less than 6.....	175
Sub 5	6 but less than 8.....	125
Sub 6	8 but less than 10.....	100
Sub 7	10 but less than 12.....	92.5
Sub 8	12 but less than 15.....	85
Sub 9	15 but less than 22.5.....	70
Sub 10	22.5 but less than 30.....	65
Sub 11	30 or greater.....	60
125851	NOTE—Exhaust systems consist of mufflers, resonators or silencers and exhaust or tail pipes, with or without head pipes, collectors, manifolds or mounting hardware.	
125852	NOTE—Not Involved.	
125853	NOTE—Not Involved.	

SUBJECT 13

Proposed Classification Provisions

Item	Description	Class
57170	Devices or Converters , catalytic, internal combustion engine exhaust system, etc	⇒Cancel; see item 125850
	MACHINERY GROUP: subject to item 114000	
125850	Mufflers, Exhaust Systems, Automobile Pipe, Surge Suppressors and related articles, viz.: Automobile Pipe or Tubing , steel, copper plate or terne plate, straight or bent, further processed than cut to length, see Note, item 125853; ⇒ Catalytic Converters , internal combustion engine exhaust system; Exhaust Systems , internal combustion engine, see Note, item 125851; Hydraulic Accumulators ; Industrial Noise, Pulsation or Surge Suppressors or Silencers , see Note, item 125852; Mufflers, Resonators, Spark Arresters or Silencers , internal combustion engine; In packages, subject to Item 170 and having a density in pounds per cubic foot of:	
Sub 1	Less than 1	400
Sub 2	1 but less than 2.....	300
Sub 3	2 but less than 4.....	250
Sub 4	4 but less than 6.....	175
Sub 5	6 but less than 8.....	125
Sub 6	8 but less than 10.....	100
Sub 7	10 but less than 12.....	92.5
Sub 8	12 but less than 15.....	85
Sub 9	15 but less than 22.5.....	70
Sub 10	22.5 but less than 30.....	65
Sub 11	30 or greater.....	60
125851	NOTE—Exhaust systems consist of mufflers, resonators or silencers and exhaust or tail pipes, with or without head pipes, collectors, manifolds, ⇒catalytic converters or mounting hardware.	
125852	NOTE—No Change.	
125853	NOTE—No Change.	

Analysis

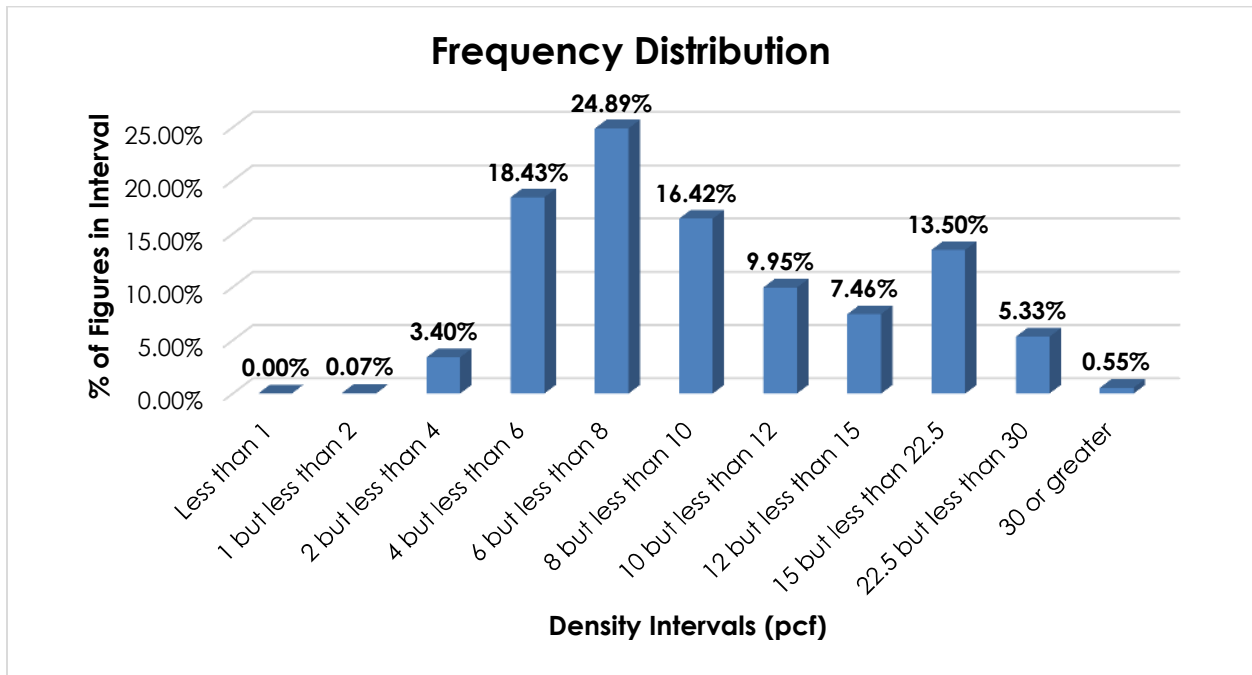
Introduction

This proposal is based on information developed through Research Project 1492, which was initiated to review the transportation characteristics of catalytic converters, as embraced by item 57170.

SUBJECT 13

Transportation Characteristics

Density—The information of record includes 6,713 density observations submitted by carriers and obtained from the FCDC’s Density Study¹. The densities range from 1.00 to 33.52 pcf, with an overall average density of 10.38 pcf. As shown in the graph below, the densities are distributed throughout the range.



Handling, Stowability and Liability—There have been no reports of unusual or significant handling, stowability or liability concerns.

Conclusion

Based on the foregoing analysis, item 57170 would be canceled with reference to the full-scale, density-based provisions of item 125850².

Concurrently, in the interest of clarification, simplification and uniformity, this proposal would amend the “viz.” listing in item 125850 to include, “Catalytic Converters, internal combustion engine exhaust system.”

Note, item 125851 would be amended accordingly.

¹ The Density Study is part of an ongoing effort by the FCDC to collect information on actual shipments across all product categories handled by the LTL industry. Carriers that choose to participate in the Study periodically submit shipment data captured through their respective freight auditing programs. The FCDC uses verifiable data points, identified by NMFC item, that include the weight and the dimensions and/or cube of the shipping unit.

² Item 125850 provides the FCDC’s standard 11-subprovision density scale, which includes reference to Item (Rule) 170, the inadvertence clause.