

**SUBJECT 12**

**Re:** Caps and Covers Group

**Contact:** Joel L. Ringer Telephone — (703) 838-1826 ringer@nmfta.org

**Proponent:** Freight Classification Development Council

**Present Classification Provisions**

Item	Description	Class
40220	<b>CAPS AND COVERS GROUP:</b> Articles consist of Caps, Covers, Discs, Ends, Bands, Lids, Rings or Tops, as described in items subject to this grouping, for Bottles, Cans, Collapsible Tubes, Glasses, Jars or Jugs, see Note, item 40222, other than Display Covers for Cans.	
40222	NOTE—Can bottoms and tops, which together comprise a complete can, will be subject to class applying on the complete can.	
40230	<b>Aluminum, NOI, Brass, Bronze, Copper, Nickel, Silver or White Metal,</b> with or without inserts, in boxes or drums ..... 100	100
40235	<b>Bands, Sleeves or Wrappers,</b> heat shrinkable tubular plastic film, see Note, item 40236, cut to size, printed or not printed, KD flat, in boxes ..... 55	55
40236	NOTE—Applies only on bands, sleeves or wrappers which employ the heat-shrinking process for final sizing to product.	
40240	<b>Bottle Caps,</b> steel or tin, separate or combined with aluminum, crimped edge, see Note, item 40242, lined with cork, paperboard or plastic, without attachments, in boxes or drums..... 55	55
40242	NOTE—Applies only on caps of the type used for bottled beverages, having crimps, corrugations or flutings around the perimeter of cap. Provisions will not apply on screw-thread, twist-on or lug held caps.	
40245	<b>Can Ends,</b> see Note, item 40247, in packages:	
Sub 1	Aluminum ..... 60	60
Sub 2	Steel or tin..... 55	55
40247	NOTE—Applies only on can ends of a type which become a permanent part of the can and when removed from the can cannot be replaced. Ends may have insert or component made of other materials not to exceed 25 percent by weight of basic material.	
40255	<b>Caps, Covers, Discs, Ends or Tops,</b> NOI, fiberboard, paper or pulpboard, with or without fasteners, for bottles, cans, cups, collapsible tubes, glasses, jars or jugs, in packages:	
Sub 1	With raised or standing rims, edges or ends ..... 100	100
Sub 2	Without raised or standing rims, edges or ends ..... 60	60
40265	<b>Caps, Covers, Discs, Ends, Bands, Rings or Tops,</b> NOI, other than plastic, with or without fasteners, for bottles, cans, cups, collapsible tubes, glasses, jars or jugs, in packages ..... 70	70
40290	<b>Caps, Covers or Tops,</b> dispensing, for pressurized cans or bottles; <b>or Assembled Parts thereof,</b> NOI; in boxes ..... 125	125
40300	<b>Cellulose Bands, Caps, Covers or Tops,</b> for bottles, cans, glasses or jars, cut-to-size or other than cut-to-size, see Note, item 40304; in boxes, drums or Package 942..... 70	70

SUBJECT 12

Present Classification Provisions — Continued

Item	Description	Class
	<b>CAPS AND COVERS GROUP:</b> subject to item 40220	
40304	NOTE—Applies only on those bands, caps, covers or tops which are applied in a wet condition and shrink dry.	
40305	<b>Discs or Lids</b> , steel or tin plate, with sealing compound, see Note, item 40307, in packages.....	60
40307	NOTE—Applies only on discs or lids for use with screw band closures.	
40310	<b>Fiberboard, Paper or Pulpboard</b> , other than disks, NOI, in boxes, crates or drums:	
Sub 1	Not nested.....	150
Sub 2	Nested.....	100
40320	<b>Fiberboard</b> , plastic treated, screw type, in boxes.....	100
40330	<b>Foil or Foil and Paper combined</b> , NOI, in boxes or drums:	
Sub 1	Nested, KD flat or in disk form.....	85
Sub 2	Not nested, not KD flat nor in disk form.....	500
40350	<b>Glass or Glass and Metal combined</b> , with or without fasteners, in boxes.....	60
40360	<b>Milk Bottle Caps</b> , aluminum foil or aluminum foil and paper combined, nested, in boxes.....	85
40370	<b>Milk Bottle Caps</b> , pulpboard, see Note, item 40372.....	60
40372	NOTE—Also applies on pulpboard caps with U-shaped flanges fitting pouring lip of glass containers other than milk bottles.	
40375	<b>Mounting Covers</b> , sheet steel, with or without rubber gaskets, without valves or tubes, for pressurized cans or bottle caps, covers or tops, in boxes.....	70
40390	<b>Paper or Pulpboard</b> , snap-on type, in boxes.....	100
	<b>PLASTIC OR RUBBER ARTICLES GROUP:</b> subject to item 156500*	
156600*	<b>Articles</b> , see Note, item 156601, viz.:	
	<b>Caps, Covers, Discs, Ends, Bands, Rings or Tops</b> , NOI, for bottles, cans, cups, collapsible tubes, glasses, jars or jugs;	
	[Other Articles Listed—Not Involved.]	
	In boxes, crates, drums or Packages 1078, 1241, 1273 or 2213, see Note, item 156602, subject to Item 170 and having a density in pounds per cubic foot of:	
Sub 1	Less than 1.....	400
Sub 2	1 but less than 2.....	300
Sub 3	2 but less than 4.....	250
Sub 4	4 but less than 6.....	175
Sub 5	6 but less than 8.....	125
Sub 6	8 but less than 10.....	100
Sub 7	10 but less than 12.....	92.5
Sub 8	12 but less than 15.....	85
Sub 9	15 but less than 22.5.....	70
Sub 10	22.5 but less than 30.....	65
Sub 11	30 or greater.....	60

\*Published in Supplement 1 to NMF 100-AW, effective April 8, 2023.

SUBJECT 12

Present Classification Provisions — Concluded

Item	Description	Class
156601	NOTE—Not Involved.	
156602	NOTE—Not Involved.	
156603	NOTE—Not Involved.	
156604	NOTE—Not Involved.	

Package 942

Provisions for 'in boxes' will apply only when packed in plastic film bags in fiberboard boxes as follows: Maximum inside dimensions 57 united inches and must test 275 pounds. Box must be lined on all four sides, top and bottom with singlewall corrugated fiberboard. Plastic film bag must have dimensions larger than the fiberboard box and must be of 0.003 inches or thicker. Bag to contain not more than 5 quarts of liquid. Gross weight of contents and container not to exceed 70 pounds.

Proposed Classification Provisions

Item	Description	Class
40220	<b>CAPS AND COVERS GROUP</b> , etc ..... ⇒Cancel; no further application	
40222	NOTE—⇒Cancel; no further application.	
40230	<b>Aluminum, NOI, Brass, Bronze, Copper, Nickel, Silver or White Metal</b> , etc ..... ⇒Cancel; see item A-NEW	
40235	<b>Bands, Sleeves or Wrappers</b> , heat shrinkable tubular plastic film, etc ..... ⇒Cancel; see item A-NEW	
40236	NOTE—⇒Cancel; no further application.	
40240	<b>Bottle Caps</b> , steel or tin, separate or combined with aluminum, crimped edge, etc ..... ⇒Cancel; see item A-NEW	
40242	NOTE—⇒Cancel; no further application.	
40245	<b>Can Ends</b> , etc ..... ⇒Cancel; see item A-NEW	
40247	NOTE—⇒Cancel; no further application.	
40255	<b>Caps, Covers, Discs, Ends or Tops</b> , NOI, fiberboard, paper or pulpboard, etc..... ⇒Cancel; see item A-NEW	
40265	<b>Caps, Covers, Discs, Ends, Bands, Rings or Tops</b> , NOI, other than plastic, etc..... ⇒Cancel; see item A-NEW	
40290	<b>Caps, Covers or Tops</b> , dispensing, for pressurized cans or bottles; <b>or Assembled Parts thereof</b> , NOI, etc ..... ⇒Cancel; see item A-NEW	

SUBJECT 12

Proposed Classification Provisions — Continued

Item	Description	Class
	<b>CAPS AND COVERS GROUP:</b> subject to item 40220	
40300	<b>Cellulose Bands, Caps, Covers or Tops</b> , etc.....	⇒Cancel; see item A-NEW
40304	NOTE—⇒Cancel; no further application.	
40305	<b>Discs or Lids</b> , steel or tin plate, with sealing compound, etc.....	⇒Cancel; see item A-NEW
40307	NOTE—⇒Cancel; no further application.	
40310	<b>Fiberboard, Paper or Pulpboard</b> , other than disks, NOI, etc.....	⇒Cancel; see item A-NEW
40320	<b>Fiberboard</b> , plastic treated, screw type, etc.....	⇒Cancel; see item A-NEW
40330	<b>Foil or Foil and Paper combined</b> , NOI, etc.....	⇒Cancel; see item A-NEW
40350	<b>Glass or Glass and Metal combined</b> , etc.....	⇒Cancel; see item A-NEW
40360	<b>Milk Bottle Caps</b> , aluminum foil or aluminum foil and paper combined, etc.....	⇒Cancel; see item A-NEW
40370	<b>Milk Bottle Caps</b> , pulpboard, etc.....	⇒Cancel; see item A-NEW
40372	NOTE—⇒Cancel; no further application.	
40375	<b>Mounting Covers</b> , sheet steel, with or without rubber gaskets, without valves or tubes, for pressurized cans or bottle caps, covers or tops, etc.....	⇒Cancel; see item A-NEW
40390	<b>Paper or Pulpboard</b> , snap-on type, etc.....	⇒Cancel; see item A-NEW
	<b>PLASTIC OR RUBBER ARTICLES GROUP:</b> subject to item 156500	
156600	<b>Articles</b> , see Note, item 156601, <b>viz.:</b> ⇒ <del>Caps, Covers, Discs, Ends, Bands, Rings or Tops</del> , NOI, for bottles, cans, cups, collapsible tubes, glasses, jars or jugs; [Other Articles Listed—No Change.] In boxes, crates, drums or Packages 1078, 1241, 1273 or 2213, see Note, item 156602, subject to Item 170 and having a density in pound per cubic foot of:	
Sub 1	Less than 1 .....	400
Sub 2	1 but less than 2.....	300
Sub 3	2 but less than 4.....	250
Sub 4	4 but less than 6.....	175
Sub 5	6 but less than 8.....	125
Sub 6	8 but less than 10.....	100
Sub 7	10 but less than 12.....	92.5
Sub 8	12 but less than 15.....	85
Sub 9	15 but less than 22.5.....	70
Sub 10	22.5 but less than 30.....	65
Sub 11	30 or greater.....	60

**SUBJECT 12**

**Proposed Classification Provisions — Concluded**

Item	Description	Class
156601	NOTE—No Change.	
156602	NOTE—No Change.	
156603	NOTE—No Change.	
156604	NOTE—No Change.	

**Package 942**

⇒Cancel; no further application.

**CONCURRENTLY, ADD THE FOLLOWING NEW ITEMS:**

Item	Description	Class
⇒A-NEW	<b>Caps, Covers, Discs, Ends, Bands, Lids, Rings or Tops</b> , NOI, for bottles, cans, cups, collapsible tubes, glasses, jars or jugs, see Note, item B-NEW, in boxes, subject to Item 170 and having a density in pounds per cubic foot of:	
Sub 1	Less than 1.....	400
Sub 2	1 but less than 2.....	300
Sub 3	2 but less than 4.....	250
Sub 4	4 but less than 6.....	175
Sub 5	6 but less than 8.....	125
Sub 6	8 but less than 10.....	100
Sub 7	10 but less than 12.....	92.5
Sub 8	12 but less than 15.....	85
Sub 9	15 but less than 22.5.....	70
Sub 10	22.5 but less than 30.....	65
Sub 11	30 or greater.....	60
⇒B-NEW	NOTE—Also applies on <b>Bands, Sleeves or Wrappers</b> made of heat-shrinkable tubular plastic film, cut to size, such as used for product labeling, securement or to protect against tampering.	

**Analysis**

**Introduction**

There are numerous items in the Caps and Covers Group applying on various types of caps, covers, tops, etc., for bottles, cans, jars and so forth. These provisions can be difficult to interpret, apply or verify. Also, the general, “catch-all” provisions for caps, covers, tops, etc., made of plastic or rubber are not under the Caps and Covers Group at all, but instead are named in item 156600 under the Plastic or Rubber Articles Group. All this creates undue complexity.

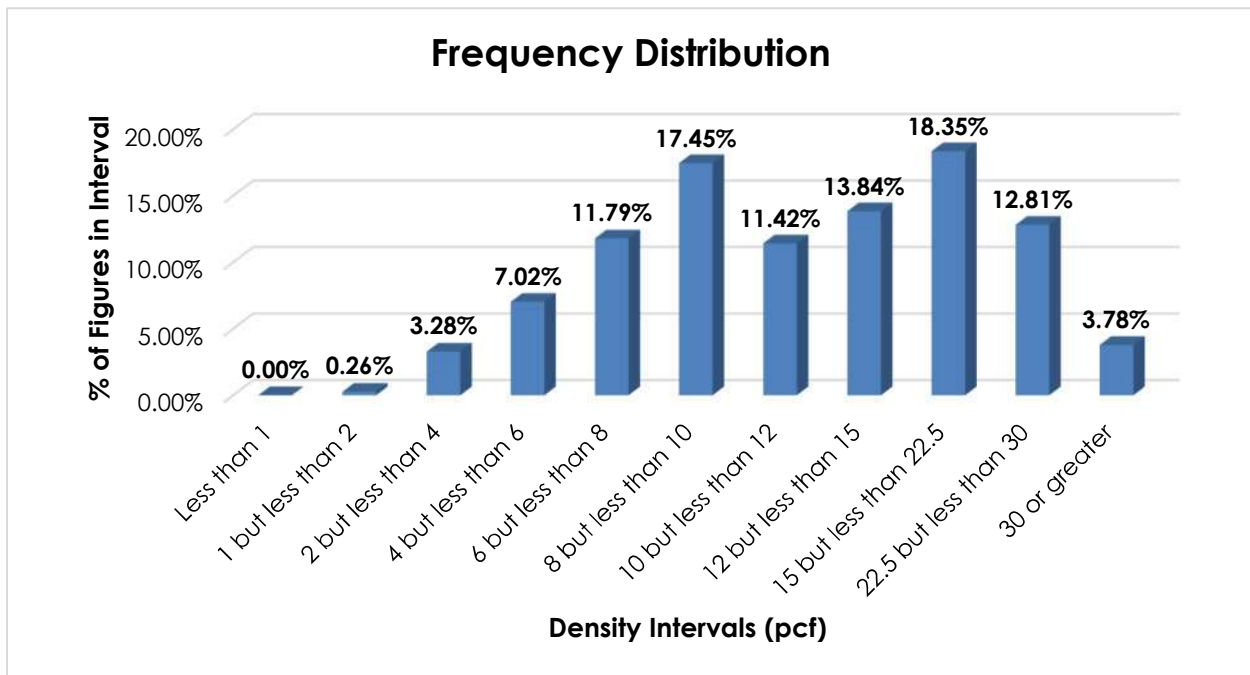
**SUBJECT 12**

Moreover, the involved products exhibit a wide range of densities, yet only those classified in item 156600, which provides the FCDC’s standard 11-subprovision density scale, are assigned density-based classes.

The following transportation characteristics relate to the Caps and Covers Group, items 40230 through 40390, as shown in the Present Classification Provisions herein.

**Transportation Characteristics**

**Density**—The information of record includes 8,514 density observations submitted by carriers and obtained from the FCDC’s Density Study<sup>1</sup>. The densities range from 1.53 to 46.60 pcf, with an overall average density of 13.85 pcf. As shown in the graph below, the densities are widely distributed throughout most of the range.



**Handling, Stowability and Liability**—There have been no reports of unusual or significant handling, stowability or liability concerns.

<sup>1</sup> The Density Study is part of an ongoing effort by the FCDC to collect information on actual shipments across all product categories handled by the LTL industry. Carriers that choose to participate in the Study periodically submit shipment data captured through their respective freight auditing programs. The FCDC uses verifiable data points, identified by NMFC item, that include the weight and the dimensions and/or cube of the shipping unit.

**SUBJECT 12****Conclusion**

Based on the foregoing analysis, and in the interest of clarification and simplification, the items in the Caps and Covers Group—items 40230, 40235, 40240, 40245, 40255, 40265, 40290, 40300, 40305, 40310, 40320, 40330, 40350, 40360, 40370, 40375 and 40390—would be canceled with reference to a new item, naming “Caps, Covers, Discs, Ends, Bands, Lids, Rings or Tops, NOI, for bottles, cans, cups, collapsible tubes, glasses, jars or jugs,” with classes predicated on the FCDC’s standard 11-subprovision density scale<sup>2</sup>. The listing in item 156600 for caps, covers, tops, etc., made of plastic or rubber would be removed, and those products would likewise be classified in the new item.

A new attendant Note would be established to clarify the application of the new item.

Numerous Notes would be canceled as having no further application, as would the generic heading, item 40220.

The FCDC’s Packaging Manager has reviewed the proposed minimum packaging requirements and determined that they are appropriate for the LTL environment. Additionally, pursuant to the recommendation of the FCDC’s Packaging Manager, Package 942 would be canceled with no further application.

---

<sup>2</sup> The FCDC’s standard 11-subprovision density scale includes reference to Item (Rule) 170, the inadvertence clause.