

SUBJECT 2

Re: Games or Toys Group

Contact: Adam C. Mercer Telephone — (703) 838-1911 mercer@nmfta.org

Proponent: Freight Classification Development Council

Present Classification Provisions

Item	Description	Class
	GAMES OR TOYS GROUP: subject to item 83900	
83985	Boards or Sticks , toy building or construction, cut to length, notched, wooden, in the white, in boxes.....	70
83990	Blocks , school, educational construction, wooden, in the white, in boxes	70
84000	Cap Pistol and Toy Pistol Caps , mounted on paper cards, in boxes	85
84020	Cards , playing, in boxes:	
Sub 1	Paper or paperboard.....	70
Sub 2	NOI.....	100
84040	Checkers, Checkerboards or Checker Games , in boxes.....	70
84080	Dish Sets , glass or pottery, in boxes.....	70
84100	Doll Heads , in boxes or drums, or Doll Bodies , in bags, boxes or drums	125
84140	Dominoes , in boxes	70
84170	Games , card, children's, see Note, item 84172, in boxes	70
84172	NOTE—Applies only on games consisting only of printed paper or paperboard cards.	
84175	Games , lottery type, paper or paperboard, see Note, item 84176, in boxes	70
84176	NOTE—Applies only on punch-out, pull-tab, scratch-off or peel-back type games employed in conducting games of chance.	

THIS SPACE INTENTIONALLY LEFT BLANK

SUBJECT 2

Present Classification Provisions — Continued

Item	Description	Class
	GAMES OR TOYS GROUP: subject to item 83900	
84260	Games or Toys, viz.: Doll Carriages or Strollers; Dolls or Doll Clothing or Accessories; Equipment, toy or model railroad, see Note, item 84262; Games or Toys, NOI; Model Kits, hobby or toy; Puzzles; Stuffed Animals; Video Game Consoles, other than coin- or currency-operated; Video Games, NOI, other than coin- or currency-operated, see Note, item 84261; In boxes or Packages 2213, 2249 or 2296, subject to Item 170 and having a density in pounds per cubic foot of:	
Sub 1	Less than 1	400
Sub 2	1 but less than 2.....	300
Sub 3	2 but less than 4.....	250
Sub 4	4 but less than 6.....	175
Sub 5	6 but less than 8.....	125
Sub 6	8 but less than 10.....	100
Sub 7	10 but less than 12.....	92.5
Sub 8	12 but less than 15.....	85
Sub 9	15 but less than 22.5.....	70
Sub 10	22.5 but less than 30.....	65
Sub 11	30 or greater.....	60
84261	NOTE—Does not apply on cartridge-type video games as named in item 63025.	
84262	NOTE—Applies on locomotives, cars, tracks or accessories whether or not in sets.	
84270	Games or Toys, NOI, paper; in sheets, see Note, item 84271; or KD flat; in boxes.....	85
84271	NOTE—Sheets may be creased and doubled upon themselves one or more times.	
84300	Games or Toys, NOI, plastic or rubber, pneumatic, other than toy balloons, and other than balls, see Notes, items 84303 and 84304, in boxes:	
Sub 1	Deflated, see Note, item 84302.....	70
Sub 2	Inflated	300
84302	NOTE—Applies only on articles which are collapsed or folded and which do not have parts or accessories of other materials except that they may have ropes attached or may be weighted.	

SUBJECT 2

Present Classification Provisions — Continued

Item	Description	Class
	GAMES OR TOYS GROUP: subject to item 83900	
84303	NOTE—Does not apply on inflatable or air-supported enclosures, structures or promotional or advertising figures or images, nor on amusements, such as games, bouncers, rides or slides for use at outdoor picnics, birthday parties, fund-raising or promotional events or other such festivities. For applicable provisions, see item 63595.	
84304	NOTE—For provisions applicable to toy or novelty balloons, see item 84260, 'Games or Toys, NOI.'	
84340	Guns or Rifles , air, firing hollow projectiles, in boxes	100
84360	Guns or Rifles , NOI, iron or steel, tin plate or wooden or wood combined with metal or plastic, or metal combined with plastic, see Notes, items 84362 and 84364, in boxes	85
84362	NOTE—Will also apply on guns, rifles or pistols in leather or plastic holsters.	
84364	NOTE—Plastic content not to exceed 50 percent by weight. Guns, rifles or pistols containing in excess of 50 percent plastic content are classed as 'Toys, NOI.'	
84410	Jackstones , in boxes or drums.....	70
84451	Kites , other than cellular, expanded or foam plastic, in boxes:	
Sub 1	Completely disassembled; or inflatable, deflated; see Note, item 84452	85
Sub 2	NOI.....	200
84452	NOTE—Also applies on mixed shipments of completely disassembled or deflated kites and kits containing completely disassembled or deflated kites, cord and cord winder providing the weight of the kits does not exceed 5 percent of the weight on which charges are assessed.	
84470	Merry-go-rounds , miniature, KD, in boxes or crates	100
84510	Modeling Compound , in boxes.....	60
84570	Play Balls , NOI, spherical, solid or sponge rubber, not exceeding 3½ inches in diameter, in boxes	77.5
84600	Playhouses , KD flat, in boxes:	
Sub 1	Corrugated fiberboard	85
Sub 2	Solid fiberboard	70
Sub 3	Steel	70
84690	Sets , children's paper or paperback book and recorded cassette tape, in inner containers in boxes.....	85
84700	Sets , construction, metal, completely disassembled, with or without motors, in boxes	77.5
84702	Sets , modeling, see Note, item 84703, in boxes:	
Sub 1	Clay	77.5
Sub 2	Other than clay	92.5
84703	NOTE—Applies only on sets consisting of modeling clay or modeling compound and patterns, molds, tools or like accessorial equipment.	
84705	Sets , road race, see Note, item 84706.....	100

SUBJECT 2

Present Classification Provisions — Concluded

Item	Description	Class
	GAMES OR TOYS GROUP: subject to item 83900	
84706	NOTE—Applies only on sets consisting of automobiles, transformers and unassembled track layout, other than for commercial operation, with or without accessories.	
84710	Sets , record and book, children's, see Note, item 84711, in boxes65	65
84711	NOTE—Applies only on sets consisting of disc-type recordings contained within books with paper or paperboard covers.	
84720	Springs , coiled flat wire with cloth, plastic, rubber or wooden parts, see Note, item 84722, in boxes100	100
84722	NOTE—Applies only on toys with primary body structure consisting of a coiled wire spring, collapsed.	
84730	Springs , walking, coiled flat wire, see Note, item 84732, in boxes.....70	70
84732	NOTE—Applies on coiled springs which when set in motion will 'walk' down stairs or inclines.	
84750	Tops , other than plunger type; or Yo-Yo's , not exceeding 3½ inches in diameter; in boxes77.5	77.5
84770	Toy Blocks , nested, in boxes.....85	85
84790	Toy Blocks , solid; Kindergarten Blocks , solid; or Solid Toy Block Building Sets with equipment of bolts and nuts, other than foam or sponge rubber or cellular or expanded plastic; in boxes, see Note, item 84792.....70	70
84792	NOTE—Will also apply when solid toy blocks are packed in wooden toy wagons.	
84810	Toy Cannons or Guns , NOI, iron or steel, sheet 20 gauge or thicker or sheet and cast combined, with or without wooden stocks, or cast with wooden stocks or composition parts, in boxes, crates or drums92.5	92.5
84960	Toy Blocks , corrugated fiberboard, KD flat, in boxes.....77.5	77.5
84980	Wooden Paddles with rubber balls or vacuum caps attached, in boxes77.5	77.5

Proposed Classification Provisions

Item	Description	Class
	GAMES OR TOYS GROUP: subject to item 83900	
83985	Boards or Sticks , toy building or construction, cut to length, notched, wooden, in the white, etc ⇒Cancel; see item 84260	
83990	Blocks , school, educational construction, wooden, in the white, etc ⇒Cancel; see item 84260	

SUBJECT 2

Proposed Classification Provisions — Continued

Item	Description	Class
	GAMES OR TOYS GROUP: subject to item 83900	
84000	Cap Pistol and Toy Pistol Caps , mounted on paper cards, etc	⇒Cancel; see item 84260
84020	Cards , playing, etc.....	⇒Cancel; see item 84260
84040	Checkers, Checkerboards or Checker Games , etc.....	⇒Cancel; see item 84260
84080	Dish Sets , glass or pottery, etc	⇒Cancel; see item 84260
84100	Doll Heads , in boxes or drums, or Doll Bodies , etc.....	⇒Cancel; see item 84260
84140	Dominoes , etc	⇒Cancel; see item 84260
84170	Games , card, children's, etc	⇒Cancel; see item 84260
84172	NOTE—⇒Cancel; no further application.	
84175	Games , lottery type, paper or paperboard, see Note, item 84176, etc	⇒Cancel; see item 84260
84176	NOTE—⇒Cancel; see item B-NEW.	

THIS SPACE INTENTIONALLY LEFT BLANK

SUBJECT 2

Proposed Classification Provisions — Continued

Item	Description	Class
	GAMES OR TOYS GROUP: subject to item 83900	
84260	<p>Games or Toys, viz.:</p> <p>⇒Board Games, Card Games or Tile Games;</p> <p>Doll Carriages or Strollers;</p> <p>Dolls or Doll Clothing or Accessories;</p> <p>Equipment, toy or model railroad, see Note, item 84262;</p> <p>⇒Games, lottery, see Note, item B-NEW;</p> <p>Games or Toys, NOI, ⇒see Note, item A-NEW;</p> <p>⇒Kites;</p> <p>Model Kits, hobby or toy;</p> <p>⇒Playing Cards;</p> <p>Puzzles;</p> <p>Stuffed Animals;</p> <p>⇒Toy Guns, including Dart, Cap or Water Guns, see Note, item C-NEW;</p> <p>Video Game Consoles, other than coin- or currency-operated;</p> <p>Video Games, NOI, other than coin- or currency-operated, see Note, item 84261;</p> <p>In boxes or Packages 2213, 2249 or 2296, subject to Item 170 and having a density in pounds per cubic foot of:</p>	
Sub 1	Less than 1	400
Sub 2	1 but less than 2.....	300
Sub 3	2 but less than 4.....	250
Sub 4	4 but less than 6.....	175
Sub 5	6 but less than 8.....	125
Sub 6	8 but less than 10.....	100
Sub 7	10 but less than 12.....	92.5
Sub 8	12 but less than 15.....	85
Sub 9	15 but less than 22.5.....	70
Sub 10	22.5 but less than 30.....	65
Sub 11	30 or greater	60
84261	NOTE—No Change.	
84262	NOTE—No Change.	
⇒A-NEW	NOTE—Does not apply on inflatable or air-supported enclosures, structures or promotional or advertising figures or images, nor on amusements, such as games, bouncers, rides or slides for use at outdoor picnics, birthday parties, fundraising or promotional events or other such festivities. For applicable provisions, see item 63595.	
⇒B-NEW	NOTE—Applies on punch-out, pull-tab, scratch-off or peel-back type games employed in conducting games of chance.	
⇒C-NEW	NOTE—Also applies on parts or accessories such as holsters, cap gun caps or toy projectiles.	
84270	Games or Toys, NOI, paper, etc	⇒Cancel; see item 84260
84271	NOTE—⇒Cancel; no further application.	

SUBJECT 2

Proposed Classification Provisions — Continued

Item	Description	Class
	GAMES OR TOYS GROUP: subject to item 83900	
84300	Games or Toys , NOI, plastic or rubber, pneumatic, other than toy balloons, and other than balls, etc ⇒Cancel; see item 84260	
84302	NOTE—⇒Cancel; no further application.	
84303	NOTE—⇒Cancel; see item A-NEW.	
84304	NOTE—⇒Cancel; no further application.	
84340	Guns or Rifles , air, firing hollow projectiles, etc ⇒Cancel; see item 84260	
84360	Guns or Rifles , NOI, iron or steel, tin plate or wooden or wood combined with metal or plastic, or metal combined with plastic, etc... ⇒Cancel; see item 84260	
84362	NOTE—⇒Cancel; see item C-NEW.	
84364	NOTE—⇒Cancel; no further application.	
84410	Jackstones , etc ⇒Cancel; see item 84260	
84451	Kites , other than cellular, expanded or foam plastic, etc ⇒Cancel; see item 84260	
84452	NOTE—⇒Cancel; no further application.	
84470	Merry-go-rounds , miniature, etc..... ⇒Cancel; see item 84260	
84510	Modeling Compound , etc..... ⇒Cancel; see item 84260	
84570	Play Balls , NOI, spherical, solid or sponge rubber, not exceeding 3½ inches in diameter, etc ⇒Cancel; see item 84260	
84600	Playhouses , KD flat, etc ⇒Cancel; see item 84260	
84690	Sets , children's paper or paperback book and recorded cassette tape, etc ⇒Cancel; believed to be obsolete	
84700	Sets , construction, metal, completely disassembled, with or without motors, etc ⇒Cancel; see item 84260	
84702	Sets , modeling, etc ⇒Cancel; see item 84260	
84703	NOTE—⇒Cancel; no further application.	
84705	Sets , road race, etc..... ⇒Cancel; see item 84260	
84706	NOTE—⇒Cancel; no further application.	
84710	Sets , record and book, children's, etc..... ⇒Cancel; believed to be obsolete	
84711	NOTE—⇒Cancel; no further application.	

SUBJECT 2

Proposed Classification Provisions — Concluded

Item	Description	Class
	GAMES OR TOYS GROUP: subject to item 83900	
84720	Springs , coiled flat wire with cloth, plastic, rubber or wooden parts, etc.....	⇒Cancel; see item 84260
84722	NOTE—⇒Cancel; no further application.	
84730	Springs , walking, coiled flat wire, etc	⇒Cancel; see item 84260
84732	NOTE—⇒Cancel; no further application.	
84750	Tops , other than plunger type; or Yo-Yo's , not exceeding 3½ inches in diameter, etc	⇒Cancel; see item 84260
84770	Toy Blocks , nested, etc	⇒Cancel; see item 84260
84790	Toy Blocks , solid; Kindergarten Blocks , solid; or Solid Toy Block Building Sets with equipment of bolts and nuts, other than foam or sponge rubber or cellular or expanded plastic, etc.....	⇒Cancel; see item 84260
84792	NOTE—⇒Cancel; no further application.	
84810	Toy Cannons or Guns , NOI, iron or steel, sheet 20 gauge or thicker or sheet and cast combined, with or without wooden stocks, or cast with wooden stocks or composition parts, etc	⇒Cancel; see item 84260
84960	Toy Blocks , corrugated fiberboard, etc	⇒Cancel; see item 84260
84980	Wooden Paddles with rubber balls or vacuum caps attached, etc.....	⇒Cancel; see item 84260

Analysis

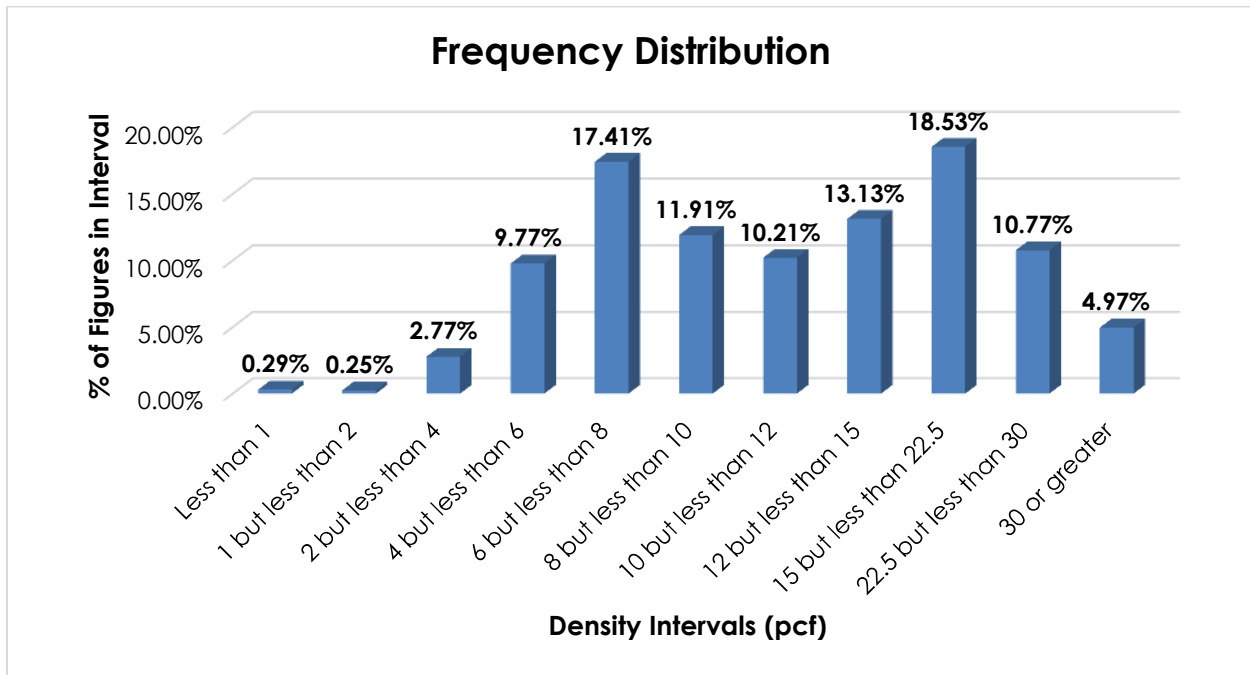
Introduction

This proposal is in based on a review of the Games or Toys Group. The transportation characteristics below relate to items 83985, 83990, 84000, 84020, 84040, 84080, 84100, 84140, 84170, 84175, 84270, 84300, 84340, 84360, 84410, 84451, 84470, 84510, 84570, 84600, 84700, 84702, 84705, 84720, 84730, 84750, 84770, 84790, 84810, 84960 and 84980, as shown in the Present Classification Provisions herein.

SUBJECT 2

Transportation Characteristics

Density—The information of record includes 10,533 density observations obtained from the FCDC’s Density Study¹. The densities range from 0.66 to 50.85 pcf, with an overall average density of 13.72 pcf. As shown in the graph below, the densities are distributed throughout the range.



Handling, Stowability and Liability—There have been no reports of unusual or significant handling, stowability or liability concerns.

Conclusion

Based on the foregoing analysis, items 83985, 83990, 84000, 84020, 84040, 84080, 84100, 84140, 84170, 84175, 84270, 84300, 84340, 84360, 84410, 84451, 84470, 84510, 84570, 84600, 84700, 84702, 84705, 84720, 84730, 84750, 84770, 84790, 84810, 84960 and 84980 would be canceled with reference to the full-scale, density-based provisions of item 84260². Additionally, items 84690 and 84710 would be canceled as obsolete. These changes would foster clarification and simplification.

¹ The Density Study is part of an ongoing effort by the FCDC to collect information on actual shipments across all product categories handled by the LTL industry. Carriers that choose to participate in the Study periodically submit shipment data captured through their respective freight auditing programs. The FCDC uses verifiable data points, identified by NMFC item, that include the weight and the dimensions and/or cube of the shipping unit.

² Item 84260 provides the FCDC’s standard 11-subprovision density scale, which includes reference to Item (Rule) 170, the inadvertence clause.

SUBJECT 2

Also, in the interest of clarification and simplification, this proposal would amend the "viz." listing in item 84260, as shown in the Proposed Classification Provisions herein.

Notes, items 84176, 84303 and 84362 would be canceled with reference to new Notes attendant to item 84260. Numerous other Notes would be canceled with no further application.