

**SUBJECT 8**

**Re:** Sugar

**Contact:** Allison L. Austin

Telephone — (703) 838-8864

austin@nmfta.org

**Proponent:** Freight Classification Development Council

**Present Classification Provisions**

Item	Description	Class
	<b>FOODSTUFFS GROUP:</b> subject to item 72000	
73150*	<b>Flour or Meal, viz.:</b> <b>Flour</b> , NOI; <b>Meal</b> , NOI, including <b>Corn Meal</b> ; <b>Mixes</b> , baking, NOI, including <b>Bread, Brownie, Cake, Cookie, Muffin, Pancake or Waffle Mixes</b> , see Note, item 73151; <b>Mixes</b> , batter, breading or coating, NOI; In bags, boxes, drums or Packages 128 or 2456, subject to Item 170 and having a density in pounds per cubic foot of:	
Sub 1	Less than 10 .....	125
Sub 2	10 but less than 15.....	85
Sub 3	15 but less than 30.....	70
Sub 4	30 or greater.....	55
73151	NOTE—Not Involved.	
74900	<b>Sugar</b> , beet or cane, raw, in bags or drums .....	55
74910	<b>Sugar</b> , beet or cane, other than raw, in bags, boxes or Packages 969 or 1350 .....	55
74940	<b>Sugar</b> , cane and maple combined, in lump, bricks or cakes, in boxes, drums or pails .....	65
74960	<b>Sugar</b> , corn, sorghum grain or wheat, granulated or powdered, in bags, boxes or drums.....	55
74970	<b>Sugar</b> , corn, sorghum grain or wheat, other than granulated or powdered, in boxes, drums, cloth or five-ply paper bags, or in blocks, fused or machine pressed, weighing each 40 pounds or over, in packages.....	55
74990	<b>Sugar</b> , spiced, in bags, boxes or drums .....	65
75010	<b>Sugar</b> , invert, in boxes or drums.....	55
75030	<b>Sugar</b> , liquid, in inner containers in boxes, or in bulk in drums .....	55
75050	<b>Sugar</b> , maple, in bags, boxes, drums or pails.....	70

\*Published in Supplement 4 to NMF 100-AV, effective December 17, 2022.

**SUBJECT 8**

**Present Classification Provisions — Concluded**

**Package 969**

Sugar in tablet form in inner cartons testing not less than 40 pounds enclosed in fiberboard boxes meeting requirements of Item 222, except minimum combined weight of facings must be 116 pounds and minimum test of combined board must be 300 pounds. Gross weight must not exceed 75 pounds.

**Package 1350**

In inner containers in singlewall corrugated fiberboard boxes complying with all requirements of Item 222 for boxes testing not less than 200 pounds, except that one score line of box may be perforated, provided the strength of the box is not materially affected. Gross weight must not exceed 26½ pounds.

**Proposed Classification Provisions**

Item	Description	Class
	<b>FOODSTUFFS GROUP:</b> subject to item 72000	
73150	<b>Flour, Meal ⇨ or Sugar, viz.:</b> <b>Flour</b> , NOI; <b>Meal</b> , NOI, including <b>Corn Meal</b> ; <b>Mixes</b> , baking, NOI, including <b>Bread, Brownie, Cake, Cookie, Muffin, Pancake or Waffle Mixes</b> , see Note, item 73151; <b>Mixes</b> , batter, breading or coating, NOI; ⇨ <b>Sugar</b> , NOI; In bags, boxes, drums or Packages 128 or 2456, subject to Item 170 and having a density in pounds per cubic foot of:	
Sub 1	Less than 10 .....	125
Sub 2	10 but less than 15.....	85
Sub 3	15 but less than 30.....	70
Sub 4	30 or greater.....	55
73151	NOTE—No Change.	
74900	<b>Sugar</b> , beet or cane, raw, etc.....	⇨Cancel; see item 73150
74910	<b>Sugar</b> , beet or cane, other than raw, etc.....	⇨Cancel; see item 73150
74940	<b>Sugar</b> , cane and maple combined, in lump, bricks or cakes, etc ..	⇨Cancel; see item 73150
74960	<b>Sugar</b> , corn, sorghum grain or wheat, granulated or powdered, etc.....	⇨Cancel; see item 73150
74970	<b>Sugar</b> , corn, sorghum grain or wheat, other than granulated or powdered, etc.....	⇨Cancel; see item 73150

**SUBJECT 8**

**Proposed Classification Provisions — Concluded**

Item	Description	Class
	<b>FOODSTUFFS GROUP:</b> subject to item 72000	
74990	<b>Sugar, spiced, etc</b> .....	⇒Cancel; see item 73150
75010	<b>Sugar, invert, etc</b> .....	⇒Cancel; see item 73150
75030	<b>Sugar, liquid, etc</b> .....	⇒Cancel; see item 73150
75050	<b>Sugar, maple, etc</b> .....	⇒Cancel; see item 73150

**Package 969**

⇒Cancel; no further application.

**Package 1350**

⇒Cancel; no further application.

**Analysis**

**Introduction**

This proposal addresses the transportation characteristics of sugar, as embraced by items 74900 through 75050, as well as potential interpretive issues related to these commodities.

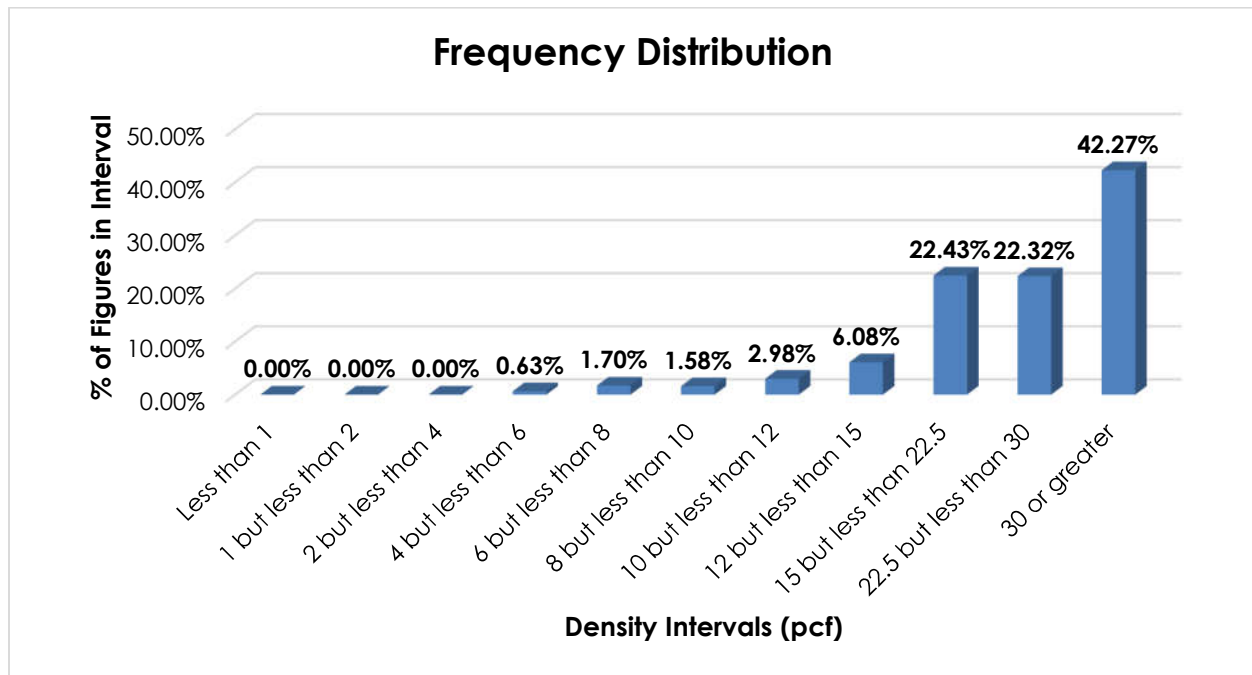
**Transportation Characteristics**

**Density**—The information of record includes 7,007 density observations obtained from the FCDC’s Density Study<sup>1</sup>. The densities range from 4.15 to 95.57 pcf, with an overall average density of 28.68 pcf. As shown in the graph on the following page, the density distribution is left-skewed, with the highest peak in the 30 pcf or greater interval and secondary clustered peaks around the average. Density breaks at 10, 15 and 30 pcf address the spread and modality of the distribution.

---

<sup>1</sup> The Density Study is part of an ongoing effort by the FCDC to collect information on actual shipments across all product categories handled by the LTL industry. Carriers that choose to participate in the Study periodically submit shipment data captured through their respective freight auditing programs. The FCDC uses verifiable data points, identified by NMFC item, that include the weight and the dimensions and/or cube of the shipping unit.

SUBJECT 8



When the data is evaluated based on the proposed density breaks, the density ranges and averages in the table below emerge.

Density Group (pcf)	Density Range (pcf)	Average Density (pcf)
Less than 10	4.15 – 9.99	7.46
10 but less than 15	10.00 – 14.99	12.77
15 but less than 30	15.00 – 29.99	22.32
30 or greater	30.00 – 95.57	40.79

**Handling, Stowability and Liability**—Care must be taken to avoid stowing the involved commodities with hazardous materials or other freight that may pose a contamination risk. They may also be damaged by freight with which stowed or by the elements. However, there have been no reports of unusual or significant handling, stowability or liability issues.

**Conclusion**

Based on the foregoing analysis, items 74900, 74910, 74940, 74960, 74970, 74990, 75010, 75030 and 75050 would be canceled with reference to the provisions of item 73150, which currently assigns classes predicated on density breaks at 10, 15 and 30 pcf<sup>2</sup>, consistent with the respective average densities of the involved products, as shown in the table on the following page.

<sup>2</sup> The density provisions include reference to Item (Rule) 170, the inadvertence clause.

SUBJECT 8

Density Group (pcf)	Average Density (pcf)	FCDC Minimum Average Density Guideline (pcf)	Class Based on FCDC Density Guidelines
Less than 10	7.46	7	125
10 but less than 15	12.77	12	85
15 but less than 30	22.32	15	70
30 or greater	40.79	35	55

This proposal would group the involved products with related commodities possessing comparable transportation characteristics. Concurrently, the “viz.” listing in item 73150 would be amended to include “Sugar, NOI,” to foster clarification.

Moreover, to ensure that the commodities are adequately protected so as to withstand the normal rigors of the less-than-truckload environment, and pursuant to the recommendation of the FCDC’s Packaging Manager, Packages 969 and 1350 would be canceled with no further application.