

**SUBJECT 6**

**Re:** Pipe, Tubing or Pipe Fittings, NOI, mineral and resin composition combined — Item 52250

**Contact:** Erin N. Topper Telephone — (703) 838-8856 topper@nmfta.org

**Proponent:** Freight Classification Development Council

**Present Classification Provisions**

Item	Description	Class
	<b>CONDUITS, OTHER THAN EARTHEN, GROUP:</b> subject to item 50750	
52250	<b>Pipe, Tubing or Pipe Fittings</b> , NOI, walls more than 1/4 inch thick, mineral and resin composition combined, see Note, item 52252; in boxes or bundles, see Note, item 52254 .....	70
52252	NOTE—Resin content of the pipe, tubing or pipe fittings must exceed 20 percent but not exceed 50 percent by weight. Also applies on accompanying connector articles of metal construction necessary for installation not to exceed 10 percent of the weight on which charges are assessed.	
52254	NOTE—Shipments of pipe fittings and connector articles must be made in boxes. Shipments of pipe or tubing in tied bundles must have ends of pipe or tubing protected.	
	<b>PLASTIC OR RUBBER ARTICLES, OTHER THAN EXPANDED, GROUP:</b> subject to item 156500	
156600*	<b>Articles, viz.:</b> <b>Pipe or Pipe Fittings;</b> <b>Tubing</b> , NOI, other than flexible; [Other Articles Listed—Not Involved.] In boxes, crates, drums or Packages 1078, 1241, 1273 or 2213, see Note, item 156602, subject to Item 170 and having a density in pounds per cubic foot of:	
Sub 1	Less than 1 .....	400
Sub 2	1 but less than 2.....	300
Sub 3	2 but less than 4.....	250
Sub 4	4 but less than 6.....	175
Sub 5	6 but less than 8.....	125
Sub 6	8 but less than 10.....	100
Sub 7	10 but less than 12.....	92.5
Sub 8	12 but less than 15.....	85
Sub 9	15 but less than 22.5.....	70
Sub 10	22.5 but less than 30.....	65
Sub 11	30 or greater .....	60
156602	NOTE—Not Involved.	
156603	NOTE—Not Involved.	
156604	NOTE—Not Involved.	

\*Published in Supplement 1 to NMF 100-AV, effective April 9, 2022.

**SUBJECT 6**

**Proposed Classification Provisions**

Item	Description	Class
52250	<b>CONDUITS, OTHER THAN EARTHEN, GROUP:</b> subject to item 50750 <b>Pipe, Tubing or Pipe Fittings</b> , NOI, walls more than 1/4 inch thick, mineral and resin composition combined, etc .....	⇒Cancel; see item 156600
52252	NOTE—⇒Cancel; no further application.	
52254	NOTE—⇒Cancel; no further application.	
156600	<b>PLASTIC OR RUBBER ARTICLES, OTHER THAN EXPANDED, GROUP:</b> subject to item 156500 <b>Articles, viz.:</b> <b>Pipe or Pipe Fittings;</b> <b>Tubing</b> , NOI, other than flexible; [Other Articles Listed—No Change.] In boxes, crates, drums or Packages 1078, 1241, 1273 or 2213, see Note, item 156602, subject to Item 170 and having a density in pounds per cubic foot of:	
Sub 1	Less than 1 .....	400
Sub 2	1 but less than 2.....	300
Sub 3	2 but less than 4.....	250
Sub 4	4 but less than 6.....	175
Sub 5	6 but less than 8.....	125
Sub 6	8 but less than 10.....	100
Sub 7	10 but less than 12.....	92.5
Sub 8	12 but less than 15.....	85
Sub 9	15 but less than 22.5.....	70
Sub 10	22.5 but less than 30.....	65
Sub 11	30 or greater .....	60
156602	NOTE—No Change.	
156603	NOTE—No Change.	
156604	NOTE—No Change.	

**Analysis**

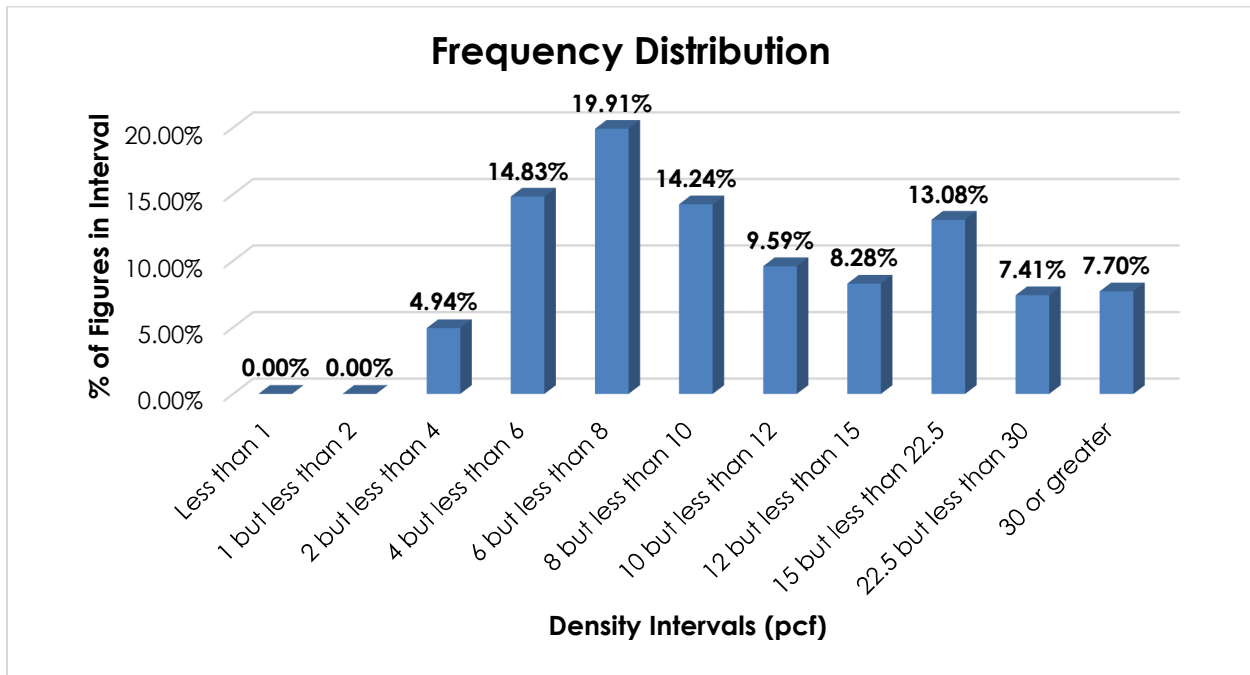
**Introduction**

Item 52250 applies on pipe, tubing or pipe fittings made of mineral and resin composition combined and having walls more than 1/4 inch thick. Note, item 52252 provides further requirements/restrictions as to when item 52250 applies. When the specific conditions of this item are not met, item 156600, which names plastic pipe, tubing or pipe fittings, would be applicable.

SUBJECT 6

Transportation Characteristics

**Density**—The information of record includes 688 density observations obtained from the FCDC’s Density Study<sup>1</sup>. The densities range from 2.26 to 45.86 pcf, with an overall average density of 12.92 pcf. As shown in the graph below, the densities are distributed throughout the range.



**Handling, Stowability and Liability**—There have been no reports of unusual or significant handling, stowability or liability concerns.

Conclusion

Based on the foregoing analysis, item 52250 would be canceled with reference to the full-scale density-based provisions of item 156600<sup>2</sup>. Concurrently, Notes, items 52252 and 52254 would be canceled as having no further application.

<sup>1</sup> The Density Study is part of an ongoing effort by the FCDC to collect information on actual shipments across all product categories handled by the LTL industry. Carriers that choose to participate in the Study periodically submit shipment data captured through their respective freight auditing programs. The FCDC uses verifiable data points, identified by NMFC item, that include the weight and the dimensions and/or cube of the shipping unit.

<sup>2</sup> Item 156600 provides the FCDC’s standard 11-subprovision density scale, which includes reference to Item (Rule) 170, the inadvertence clause.