

**SUBJECT 4**

**Re:** Cabinets, or Parts Named

**Contact:** Larissa A. Franklin Telephone — (703) 838-1824 franklin@nmfta.org

**Proponent:** Freight Classification Development Council

**Present Classification Provisions**

Item	Description	Class
39200	<b>CABINETS, OR PARTS NAMED:</b>	
39210	<b>Air Conditioning</b> , metal or wood, or metal and wood combined, without air conditioning equipment:	
Sub 1	SU, in boxes, crates or Package 1078 .....	110
Sub 2	KD, in boxes or crates .....	85
39230	<b>Cabinets</b> , bathroom medicine or toilet, other than plastic, see Note, item 39232, with or without integral lighting fixtures, in boxes or Packages 1F, 3F or 5F .....	175
39232	NOTE—Applies only on cabinets designed to be hung from or recessed in upper walls.	
39235	<b>Cabinets</b> , hardware or small parts storage, other than furniture, metal or metal with plastic components, with plastic drawers, in boxes.....	92.5
39237	<b>Cabinets</b> , lock key storage or control, wall mounting, 18 gauge or thicker steel, see Note, item 39238, in boxes .....	77.5
39238	NOTE—Also applies on complement of accessories, such as key tags, key receipt tags, key loan registers, key collection envelopes or index cards or forms, when shipped within the cabinets.	
39240	<b>Cabinets</b> , outdoor household utility storage, steel, KD in panels, with or without fiberboard wallboard panels for hanging fixtures, in boxes .....	77.5
39245	<b>Cabinets</b> , radio, phonograph, tape player or recorder, television, amplifier or loudspeaker, NOI, separate or combined, without mechanism or electrical apparatus, see Note, item 39247:	
Sub 1	SU:	
Sub 2	Box type or portable, in Packages 3F, 5F, 25F, 829 or 1078 .....	150
Sub 3	Console, in Packages 1F, 2F, 3F, 5F, 829 or 1078 .....	200
Sub 4	KD, in Packages 1F, 3F or 5F.....	85
39247*	NOTE—The terms of paragraphs (c) and (d) of Note, item 79022 need not be complied with.	
39250	<b>Cabinets</b> , with pumps, grease guns or hose, with or without detached background or side panels, in boxes or crates .....	100

\*Published in Supplement 4 to NMF 100-AV, effective December 17, 2022.

SUBJECT 4

Present Classification Provisions — Continued

Item	Description	Class
	<b>CABINETS, OR PARTS NAMED:</b> subject to item 39200	
39270	<b>Cabinets</b> , NOI, with or without wheels, other than furniture, see Note, item 39272, in boxes, crates or Packages 1078 or 2520, subject to Item 170 and having a density in pounds per cubic foot of:	
Sub 1	Less than 1 .....	400
Sub 2	1 but less than 2 .....	300
Sub 3	2 but less than 4 .....	250
Sub 4	4 but less than 6 .....	175
Sub 5	6 but less than 8 .....	125
Sub 6	8 but less than 10 .....	100
Sub 7	10 but less than 12 .....	92.5
Sub 8	12 but less than 15 .....	85
Sub 9	15 but less than 22.5 .....	70
Sub 10	22.5 but less than 30 .....	65
Sub 11	30 or greater .....	60
39272	NOTE—Provisions also apply on cabinets equipped with interior electric heaters.	
39280	<b>Cabinets or Enclosures</b> , piping system protection, including the <b>Hot Box®</b> , see Note, item 39281, aluminum or fiberglass (glass-fiber reinforced plastic), insulated, with or without internal heaters:	
Sub 1	SU; not nested, in boxes; or nested, in packages .....	250
Sub 2	KD, in packages .....	110
	Hot Box® is a registered trade name of Northeast Florida Enterprises, Inc.	
39281	NOTE—Applies on cabinets or enclosures to protect exposed (above-ground) components or sections of underground piping systems, such as backflow prevention assemblies, pumps, meters or control valves.	
39300	<b>Compressed-Gas Cylinder</b> , iron or steel, with or without regulators, in packages:	
Sub 1	SU .....	175
Sub 2	KD.....	85
39315	<b>Computer Component Security</b> , lockable, metal, with or without components of other materials, in boxes .....	150
39320	<b>Door or Wall Insert</b> , milk or package receiver:	
Sub 1	With cast iron doors and frames, in boxes or crates.....	77.5
Sub 2	Other than with cast iron doors and frames, in boxes or crates.....	92.5
39330	<b>Fire Hose or Fire Extinguisher Storage</b> , separate or combined, with or without glass, in boxes or crates .....	150
39342	<b>Loudspeaker</b> , wood particleboard, with or without facings of plastic or wood, SU, box type or portable, without mechanism or electrical apparatus, having a density of 15 pounds or greater per cubic foot, see Note, item 39345, in Packages 3F, 5F, 25F, 829 or 1078.....	70

SUBJECT 4

Present Classification Provisions — Concluded

Item	Description	Class
	<b>CABINETS, OR PARTS NAMED:</b> subject to item 39200	
39345	NOTE—Density must be shown by shipper on shipping orders and bills of lading at time of shipment. If density is not shown and shipment is inadvertently accepted, charges will initially be assessed under the provisions of item 39245, naming 'Cabinets, loudspeaker, NOI.' Upon satisfactory proof of actual density, freight charges will be adjusted accordingly.	
39350	<b>Loudspeaker</b> , wooden, KD, not further finished than primed, without fittings or electrical connections, see Note, item 39352, in boxes or crates.....	70
39352	NOTE—Tops may be of plastic-faced wood.	
39370	<b>Parts</b> , cabinet, radio, phonograph, television, loudspeaker, or tape player or recorder, fiberboard, wallboard or hardboard, separate or combined with cloth, see Note, item 39372, in boxes.....	70
39372	NOTE—Parts may be equipped with wood reinforcement, screws or bolts, providing they project less than 3/4 of an inch.	
39390	<b>Postal Meter</b> , iron, with or without electric motors, in boxes or crates.....	85
39400	<b>Poultry Chilling, Picking or Scalding</b> , separate or combined, SU, with or without motors, in boxes or crates.....	100

Package 2520

**SHIPPING CONTAINER:** Electronic enclosure cabinet, frame or rack must be wrapped in an inner plastic-film bag, strapped securely to wooden pallet, protected by fiberboard top corner pads, a fiberboard sleeve and top cap.

**Inner Packaging**—Article must be covered by a plastic-film bag and banded to pallet. Fiberboard pads must be held in place at top corners.

**Body**—The bottom section must be made of a fiberboard sleeve testing not less than 350 pounds held in place to a wooden base. The top section must consist of a half-slotted container (HSC) testing not less than 350 pounds and must overlap bottom section not less than four inches.

**Base**—A wooden pallet of sound construction.

**GROSS WEIGHT:** Not to exceed 350 pounds.

Proposed Classification Provisions

Item	Description	Class
39200	<b>CABINETS, OR PARTS NAMED:</b> .....	⇒Cancel; no further application
39210	<b>Air Conditioning</b> , metal or wood, or metal and wood combined, without air conditioning equipment, etc.....	⇒Cancel; see item A-NEW

SUBJECT 4

Proposed Classification Provisions — Continued

Item	Description	Class
	<b>CABINETS, OR PARTS NAMED:</b> subject to item 39200	
39230	<b>Cabinets</b> , bathroom medicine or toilet, other than plastic, see Note, item 39232, with or without integral lighting fixtures, etc.....	⇒Cancel; see item A-NEW
39232	NOTE—⇒Cancel; no further application.	
39235	<b>Cabinets</b> , hardware or small parts storage, other than furniture, metal or metal with plastic components, with plastic drawers, etc .....	⇒Cancel; see item A-NEW
39237	<b>Cabinets</b> , lock key storage or control, wall mounting, 18 gauge or thicker steel, etc.....	⇒Cancel; see item A-NEW
39238	NOTE—⇒Cancel; no further application.	
39240	<b>Cabinets</b> , outdoor household utility storage, steel, KD in panels, with or without fiberboard wallboard panels for hanging fixtures, etc .....	⇒Cancel; see item A-NEW
39245	<b>Cabinets</b> , radio, phonograph, tape player or recorder, television, amplifier or loudspeaker, NOI, separate or combined, without mechanism or electrical apparatus, etc .....	⇒Cancel; see item A-NEW
39247	NOTE—⇒Cancel; no further application.	
39250	<b>Cabinets</b> , with pumps, grease guns or hose, with or without detached background or side panels, etc.....	⇒Cancel; believed to be obsolete
39270	<b>Cabinets</b> , NOI, with or without wheels, other than furniture, etc .....	⇒Cancel; see item A-NEW
39272	NOTE—⇒Cancel; see Note, item B-NEW.	
39280	<b>Cabinets or Enclosures</b> , piping system protection, including the <b>Hot Box®</b> , see Note, item 39281, aluminum or fiberglass (glass-fiber reinforced plastic), insulated, with or without internal heaters, etc .....	⇒Cancel; see item A-NEW
39281	NOTE—⇒Cancel; see Note, item C-NEW.	
39300	<b>Compressed-Gas Cylinder</b> , iron or steel, with or without regulators, etc.....	⇒Cancel; see item A-NEW
39315	<b>Computer Component Security</b> , lockable, metal, with or without components of other materials, etc .....	⇒Cancel; see item A-NEW

SUBJECT 4

Proposed Classification Provisions — Continued

Item	Description	Class
39320	<b>CABINETS, OR PARTS NAMED:</b> subject to item 39200 <b>Door or Wall Insert,</b> milk or package receiver, etc .....	⇒Cancel; see item A-NEW
39330	<b>Fire Hose or Fire Extinguisher Storage,</b> separate or combined, with or without glass, etc.....	⇒Cancel; see item A-NEW
39342	<b>Loudspeaker,</b> wood particleboard, with or without facings of plastic or wood, SU, box type or portable, without mechanism or electrical apparatus, having a density of 15 pounds or greater per cubic foot, etc .....	⇒Cancel; believed to be obsolete
39345	NOTE—⇒Cancel; no further application	
39350	<b>Loudspeaker,</b> wooden, KD, not further finished than primed, without fittings or electrical connections, etc .....	⇒Cancel; believed to be obsolete
39352	NOTE—⇒Cancel; no further application.	
39370	<b>Parts,</b> cabinet, radio, phonograph, television, loudspeaker, or tape player or recorder, fiberboard, wallboard or hardboard, separate or combined with cloth, etc .....	⇒Cancel; believed to be obsolete
39372	NOTE—⇒Cancel; no further application.	
39390	<b>Postal Meter,</b> iron, with or without electric motors, etc .....	⇒Cancel; believed to be obsolete
39400	<b>Poultry Chilling, Picking or Scalding,</b> separate or combined, SU, with or without motors, etc .....	⇒Cancel; see item A-NEW

THIS SPACE INTENTIONALLY LEFT BLANK

**SUBJECT 4**

**Proposed Classification Provisions — Concluded**

Item	Description	Class
⇒A-NEW	<b>Cabinets</b> , with or without wheels, other than furniture, <b>viz.:</b> <b>Bathroom Medicine or Toilet Cabinets;</b> <b>Cabinets</b> , NOI, see Note, item B-NEW; <b>Compressed-Gas Cylinder Cabinets;</b> <b>Computer Component Security Cabinets;</b> <b>Fire Hose or Fire Extinguisher Cabinets;</b> <b>Piping System Protection Cabinets or Enclosures</b> , including the <b>Hot Box®</b> , see Note, item C-NEW: In boxes, crates or Package 1078, subject to Item 170 and having a density in pounds per cubic foot of:	
Sub 1	Less than 1 .....	400
Sub 2	1 but less than 2 .....	300
Sub 3	2 but less than 4 .....	250
Sub 4	4 but less than 6 .....	175
Sub 5	6 but less than 8 .....	125
Sub 6	8 but less than 10 .....	100
Sub 7	10 but less than 12 .....	92.5
Sub 8	12 but less than 15 .....	85
Sub 9	15 but less than 22.5.....	70
Sub 10	22.5 but less than 30.....	65
Sub 11	30 or greater.....	60

Hot Box® is a registered trade name of Northeast Florida Enterprises, Inc.

⇒B-NEW NOTE—Also applies on cabinets equipped with interior electric heaters.

⇒C-NEW NOTE—Applies on cabinets or enclosures to protect exposed (above-ground) components or sections of underground piping systems, such as backflow prevention assemblies, pumps, meters or control valves.

**Package 2520**

⇒Cancel; no further application.

**Analysis**

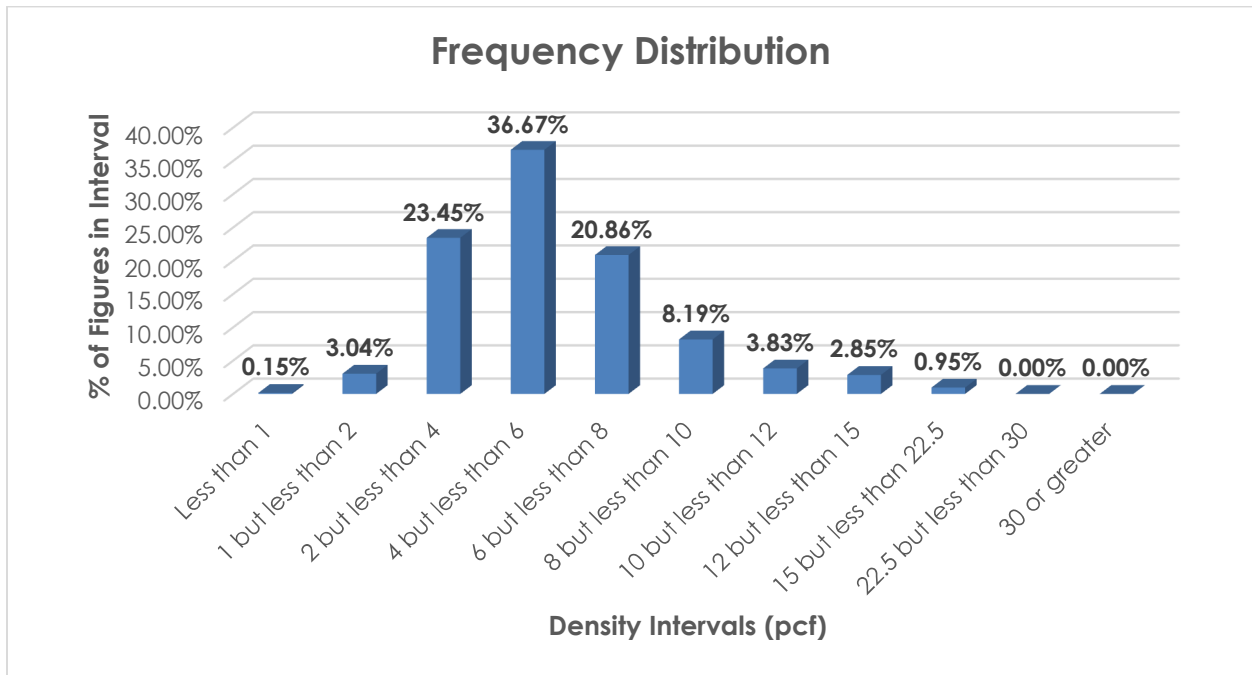
**Introduction**

There are numerous items subject to the Cabinets, or Parts Named generic heading, item 39200, that name particular types of cabinets or cabinet parts, which can be difficult to interpret, apply or verify, and several appear to be obsolete. The following transportation characteristics relate to items 39210, 39230, 39235, 39237, 39240, 39245, 39280, 39300, 39315, 39320, 39330 and 39400, as shown in the Present Classification Provisions herein.

SUBJECT 4

Transportation Characteristics

**Density**—The information of record includes 22,435 density observations obtained from the FCDC’s Density Study<sup>1</sup>. The densities range from 0.20 to 16.68 pcf, with an overall average density of 5.68 pcf. As shown in the graph below, the density distribution is right-skewed, with the majority of the figures concentrated between 2 and 8 pcf.



**Handling, Stowability and Liability**—There have been no reports of unusual or significant handling, stowability or liability concerns.

Conclusion

Based on the foregoing analysis, items 39210, 39230, 39235, 39237, 39240, 39245, 39270, 39280, 39300, 39315, 39320, 39330 and 39400 would be canceled with reference to a new item, naming “Cabinets, with or without wheels, other than furniture,” which would have a “viz.” format and provide the FCDC’s standard 11-subprovision density scale<sup>2</sup>. While the density distribution shown herein does not indicate a uniform distribution of densities throughout the range, these proposed changes would foster clarification and simplification. Items 39250, 39342, 39350, 39370 and 39390 would be canceled as obsolete, again in the interest of clarification and simplification.

<sup>1</sup> The Density Study is part of an ongoing effort by the FCDC to collect information on actual shipments across all product categories handled by the LTL industry. Carriers that choose to participate in the Study periodically submit shipment data captured through their respective freight auditing programs. The FCDC uses verifiable data points, identified by NMFC item, that include the weight and the dimensions and/or cube of the shipping unit.

<sup>2</sup> The FCDC’s standard 11-subprovision density scale includes reference to Item (Rule) 170, the inadvertence clause.

**SUBJECT 4**

Notes, items 39272 and 39281 would be canceled and reestablished as attendant Notes to the new item. Numerous Notes would be canceled as having no further application. Also, the generic heading, item 39200, would be canceled with no further application.

The FCDC's Packaging Manager has reviewed the proposed minimum packaging requirements, i.e. "in boxes, crates or Package 1078," and determined that they are appropriate for the LTL environment. Additionally, Package 2520 would be canceled with no further application.