

SUBJECT 3

Re: Dental, Hospital or Medical Supply Group

Contact: Lisa K. O'Donnell Telephone — (703) 838-1838 odonnell@nmfta.org

Proponent: Freight Classification Development Council

Present Classification Provisions

Item	Description	Class
	CABINETS, OR PARTS NAMED: subject to item 39200	
39270	Cabinets , NOI, with or without wheels, other than furniture, see Note, item 39272, in boxes, crates or Packages 1078 or 2520, subject to Item 170 and having a density in pounds per cubic foot of:	
Sub 1	Less than 1	400
Sub 2	1 but less than 2	300
Sub 3	2 but less than 4	250
Sub 4	4 but less than 6	175
Sub 5	6 but less than 8	125
Sub 6	8 but less than 10	100
Sub 7	10 but less than 12	92.5
Sub 8	12 but less than 15	85
Sub 9	15 but less than 22.5	70
Sub 10	22.5 but less than 30	65
Sub 11	30 or greater	60
39272	NOTE—Not Involved.	
56400	DENTAL, HOSPITAL OR MEDICAL SUPPLY GROUP: Articles consist of Dental, Hospital, Medical or Surgical Supplies, as described in items subject to this grouping, see Note, item 56401.	
56401	NOTE—Not Involved.	
56440	Apparatus , gas or oxygen administering, other than expendable breathing circuits or expendable administration sets, in boxes or crates.....	125
56445	Apparatus , pulmonary assistance, consisting of portable air compressor and nebulizer with tubing and mouthpiece.....	85
56533	Carts , medication storage and dispensing (Medication Carts) or patient treatment (Treatment Carts), metal or metal and plastic combined, see Note, item 56534, with or without complement of drawers, in boxes or doublewall corrugated fiberboard containers.....	150
56534	NOTE—Applies on carts designed with drawers for drugs or medicines, bandages or dressings, or other articles for the care and treatment of patients. Carts may have accessories such as cup dispensers, waste receptacles or lights.	
56540	Chests , X-ray film, sheet steel, lead lined, in boxes	85

SUBJECT 3

Present Classification Provisions — Continued

Item	Description	Class
	DENTAL, HOSPITAL OR MEDICAL SUPPLY GROUP: subject to item 56400	
56550	Commodes, Commode Chairs or Commode Stations, sanitary, with toilet seat or waste pail, in boxes:	
Sub 1	NOI.....	250
Sub 2	With steel framework, having a density in pounds per cubic foot of 12 or greater, see Note, item 56551	85
56551	NOTE—Density must be shown by shipper on shipping orders and bills of lading at time of shipment. If density is not shown and shipment is inadvertently accepted, class will initially be assessed under the provisions of sub 1, 'NOI.' Upon submission of satisfactory proof of an actual density in pounds per cubic foot of 12 or greater, class will be adjusted accordingly.	
56555	Concentrators, oxygen, see Note, item 56557, in boxes.....	100
56557	NOTE—Applies on mechanical devices designed to filter nitrogen and contaminants from ambient air to supply patient with oxygen.	
56560	Containers, blood collecting, glass, less than 1/2 pint capacity, with or without stoppers, empty, see Note, item 56562, in boxes	70
56562	NOTE—Also applies on accompanying accessorial bleeding sets, needles, needle guards, adapters, or holders with or without needles attached. The total weight of such named accessorial articles must not exceed 10 percent of the weight upon which charges are assessed.	
56600	Crutches, in packages.....	100
56620	Dental Cement, in boxes	110
56630	Dental Fountain Bowls or Cuspidors, in boxes or drums	125
56640	Dental Goods, NOI, other than plastic, in boxes.....	100
56660	Dental Impression Compound, in boxes or drums.....	85
56670	Dental Investment Compound or Dental Plaster, suitable for making casts or molds:	
Sub 1	In inner containers in boxes or drums.....	65
Sub 2	In bulk in drums or five-ply paper bags.....	55
56680*	Dental, Medical or Surgical Instruments or Machines, NOI, including Clinical Thermometers, see Note, item 56682, other than dental units, in boxes or Package 2376	150
56682	NOTE—Applies only on self-registering thermometers for determining the temperature of a human or animal body.	
56695	Dental Units, in boxes	100
56705	Dialyzers, artificial kidney machine, plastic, expendable, in boxes	100
56720	Driers, X-ray film, steel, in boxes or crates.....	85
56740	Droppers, medicine (Eyedroppers), or Medicine Droppers and Bottle Caps combined, in boxes:	
Sub 1	With plastic tubes.....	175
Sub 2	With glass tubes	70

*Published in Supplement 4 to NMF 100-AV, effective December 17, 2022.

SUBJECT 3

Present Classification Provisions — Continued

Item	Description	Class
	DENTAL, HOSPITAL OR MEDICAL SUPPLY GROUP: subject to item 56400	
56750	Electrodes , patient monitoring or testing instrument or device, plastic and metal combined, expendable, in boxes 125	125
56760	Electro-therapeutic Cabinets or Plates , table or wall, or Electro-therapeutic or Diathermic Instruments or Apparatus , NOI, in boxes or crates 100	100
56765	Forceps , suture, disposable, steel, in bulk in boxes..... 70	70
56770	Frames , fracture treatment, overhead or lateral, metal or wood, KD, in boxes..... 85	85
56775	Kits , enema, expendable, consisting of plastic containers, administering apparatus and chemical compounds, in boxes:	
Sub 1	Containing 10 ounces or more of barium sulfate compound per kit 60	60
Sub 2	NOI..... 65	65
56785	Kits or Sets , patient care, comfort or treatment, viz.:	
	Kits , maternity, see Note, item 56787;	
	Kits or Sets , expendable aspirating, administration or transference, see Note, item 56788;	
	Kits , patient care or treatment, NOI, see Note, item 56789;	
	Kits , personal care or comfort, see Note, item 56786;	
	In boxes, subject to Item 170 and having a density in pounds per cubic foot of:	
Sub 1	Less than 1 400	400
Sub 2	1 but less than 2..... 300	300
Sub 3	2 but less than 4..... 250	250
Sub 4	4 but less than 6..... 175	175
Sub 5	6 but less than 8..... 125	125
Sub 6	8 but less than 10..... 100	100
Sub 7	10 but less than 12..... 92.5	92.5
Sub 8	12 but less than 15..... 85	85
Sub 9	15 but less than 22.5..... 70	70
Sub 10	22.5 but less than 30..... 65	65
Sub 11	30 or greater..... 60	60
56786	NOTE—Applies on kits for use in hospitals, clinics, nursing homes or other medical institutions consisting of a mixture of three or more of the following: toilet preparations, toothbrush, toothpaste, bar soap, facial tissues, washcloth, comb or other articles for the personal care or comfort of the individual.	
56787	NOTE—Applies on kits consisting of bottles, maternity garments, sanitary pads or related accessories.	
56788	NOTE—Kits or sets may include empty collecting or holding containers.	

SUBJECT 3

Present Classification Provisions — Continued

Item	Description	Class
	DENTAL, HOSPITAL OR MEDICAL SUPPLY GROUP: subject to item 56400	
56789	NOTE—Applies on kits for use in doctors' offices, hospitals, clinics, nursing homes or other medical institutions consisting of a mixture of three or more of the following: expendable medical instruments, expendable medical treatment accessories, or other articles for the care or treatment of the individual; with or without chemicals, drugs or medicines, other than narcotics.	
56795	Kits , X-ray, upper digestive tract analysis, consisting of plastic cup with lid containing six ounces or more of dry barium sulfate compound, with or without drinking straw, in boxes.....	70
56820	Limbs , artificial or prosthetic, in boxes	300
56828*	Medical Supplies, viz.: Bandages or Dressings , NOI; Blankets , emergency first aid for burn victims; Braces or Supports , ankle, knee, joint or leg; Collars , cervical; Compresses , hot or cold, NOI; Pads , lap; Splints , NOI; Sponges , dental, medical or surgical, NOI; Trusses , medical or surgical, or Hernia Belts; In boxes, subject to Item 170 and having a density in pounds per cubic foot of:	
Sub 1	Less than 1	400
Sub 2	1 but less than 2.....	300
Sub 3	2 but less than 4.....	250
Sub 4	4 but less than 6.....	175
Sub 5	6 but less than 8.....	125
Sub 6	8 but less than 10.....	100
Sub 7	10 but less than 12.....	92.5
Sub 8	12 but less than 15.....	85
Sub 9	15 but less than 22.5.....	70
Sub 10	22.5 but less than 30.....	65
Sub 11	30 or greater	60
56833	Machines , surgical suturing or stapling, in boxes.....	150
56835	Pads or Swabs , saturated with rubbing alcohol, in moisture-proof inner containers, in boxes.....	70
56837	Processors , blood cell, centrifugal, in Package 2250.....	150
56860	Respirators , mechanical, in boxes or crates	110
56880	Safes , X-ray film, cast iron, in boxes	85
56890	Seals , ostomy, karaya gum and natural gums combined, in boxes	85

*Published in Supplement 4 to NMF 100-AV, effective December 17, 2022.

SUBJECT 3

Present Classification Provisions — Continued

Item	Description	Class
	DENTAL, HOSPITAL OR MEDICAL SUPPLY GROUP: subject to item 56400	
56910	☉ Sets , oxygen administration, consisting of oxygen in steel cylinders not over 240 cubic inches capacity, plastic tubing and plastic administering mask, with or without regulators, see Note, item 56911, in boxes.....	70
56911	NOTE—Does not apply on recreational oxygen in handheld canisters or containers. For applicable provisions, see item 86070.	
56920	Stretchers or Litters , ambulance, emergency response, patient transport or hospital:	
Sub 1	Other than wheeled:	
Sub 2	SU, not nested, in packages.....	200
Sub 3	SU, nested, in packages.....	100
Sub 4	KD, in packages.....	85
Sub 5	Wheeled, in boxes, crates or Package 2233.....	175
56940	Sutures , surgical, with or without accompanying wound closure material, other than wound stapling devices, with or without needles, in boxes.....	100
56950	Swabs, Swab Sticks or Swab-type Applicators , consisting of paper, plastic or wood sticks with cotton or synthetic fiber tips, single- or double-tipped, not saturated nor medicated, in boxes, subject to Item 170 and having a density in pounds per cubic foot of:	
Sub 1	Less than 8.....	175
Sub 2	8 or greater.....	100
56960	Syringes , administration, expendable, plastic, with or without needles, in boxes, subject to Item 170 and having a density in pounds per cubic foot of:	
Sub 1	Less than 1.....	400
Sub 2	1 but less than 2.....	300
Sub 3	2 but less than 4.....	250
Sub 4	4 but less than 6.....	175
Sub 5	6 but less than 8.....	125
Sub 6	8 but less than 10.....	100
Sub 7	10 but less than 12.....	92.5
Sub 8	12 but less than 15.....	85
Sub 9	15 but less than 22.5.....	70
Sub 10	22.5 but less than 30.....	65
Sub 11	30 or greater.....	60
56970	Tape , adhesive, in roll form in inner containers in boxes.....	77.5
56980	Tongue Depressing Blades or Swab Applicators , wood, paper or plastic, in boxes.....	70
57010	Tubes , integrated, blood serum separator, glass, see Note, item 57011, in boxes.....	85

SUBJECT 3

Present Classification Provisions — Continued

Item	Description	Class
	DENTAL, HOSPITAL OR MEDICAL SUPPLY GROUP: subject to item 56400	
57011	NOTE—Applies only on tubes with stoppers, less than 1/2 pint capacity, containing plastic inserts, glass particles and silica gel, for laboratory testing of blood.	
57020	Vaporizers , other than electric, with or without medicine, in boxes.....	100
57060	Walkers , tubular metal, wheeled or not wheeled, in boxes, subject to Item 170 and having a density in pounds per cubic foot of:	
Sub 1	Less than 1	400
Sub 2	1 but less than 2	300
Sub 3	2 but less than 4	250
Sub 4	4 but less than 6	175
Sub 5	6 but less than 8	125
Sub 6	8 but less than 10	100
Sub 7	10 but less than 12	92.5
Sub 8	12 but less than 15	85
Sub 9	15 but less than 22.5	70
Sub 10	22.5 but less than 30	65
Sub 11	30 or greater	60
57075	Wheelchairs , other than motor-propelled, in boxes, subject to Item 170 and having a density in pounds per cubic foot of:	
Sub 1	Less than 4	300
Sub 2	4 or greater	125
	VEHICLES, OTHER THAN SELF-PROPELLED: subject to item 188500	
188560	Barrows, Carts, Trucks, Wagons or Wheelbarrows , NOI, hand, in packages, see Note, item 188561, subject to Item 170 and having a density in pounds per cubic foot of:	
Sub 1	Less than 1	400
Sub 2	1 but less than 2	300
Sub 3	2 but less than 4	250
Sub 4	4 but less than 6	175
Sub 5	6 but less than 8	125
Sub 6	8 but less than 10	100
Sub 7	10 but less than 12	92.5
Sub 8	12 but less than 15	85
Sub 9	15 but less than 22.5	70
Sub 10	22.5 but less than 30	65
Sub 11	30 or greater	60
188561	NOTE—Not Involved.	

SUBJECT 3

Present Classification Provisions — Concluded

Package 2233

Stretchers may be packed in full overlap half-slotted (FOLHSC) doublewall (DW) corrugated fiberboard boxes with singlewall (SW) corrugated fiberboard covers as follows:

Gross Weight Not Exceeding	United Inches Not Exceeding	Box Body	Box Cover 9 Inch Depth
275 pounds	135	275 pound test	275 pound test
375 pounds	145	500 pound test	275 pound test

Clearance of not less than one inch must be maintained between bottom of stretcher and inside of box.

Package 2250

SHIPPING CONTAINER:

Box—Double cover (DC) corrugated fiberboard box constructed of the following components.

Tube—Full-height doublewall corrugated fiberboard testing 275 pounds.

Tube Liners—Two each full-height doublewall corrugated fiberboard testing 275 pounds.

Cap—Common top and bottom of corrugated fiberboard testing 275 pounds.

Corner Posts—Six L-shaped cornerposts constructed of solid fiberboard testing 275 pounds.

Base—Packed unit must be double strapped in two directions to a pallet type base.

GROSS WEIGHT: Not to exceed 600 pounds.

Package 2376

Wheeled portable ECG analysis machines may be packed as follows:

SHIPPING CONTAINER:

Body—Half-slotted container (HSC) of triplewall corrugated fiberboard testing 1,100 puncture units. When gross weight does not exceed 280 pounds, HSC may be constructed of doublewall corrugated fiberboard testing 1,000 puncture units.

Inner Sleeve—Vertical full height sleeve of doublewall corrugated fiberboard testing 275 pounds having a clearance between itself and inside walls of body of not less than 2 inches maintained by wooden blocks attached to base.

Inner Cap—Unit must be capped with an inner form covering top of unit and extending down sides of sleeve not less than 10 inches. A clearance of not less than 2 inches between sleeve and inner walls of body must be maintained at top by expanded foam plastic pads.

Base—Packed unit must be double strapped in two directions to a pallet type base having skid runners of expanded foam plastic.

GROSS WEIGHT: Must not exceed 350 pounds.

SUBJECT 3

Proposed Classification Provisions

Item	Description	Class
	CABINETS, OR PARTS NAMED: subject to item 39200	
39270	Cabinets , NOI, with or without wheels, other than furniture, see Note, item 39272, in boxes, crates or Packages 1078 or 2520, subject to Item 170 and having a density in pounds per cubic foot of:	
Sub 1	Less than 1	400
Sub 2	1 but less than 2	300
Sub 3	2 but less than 4	250
Sub 4	4 but less than 6	175
Sub 5	6 but less than 8	125
Sub 6	8 but less than 10	100
Sub 7	10 but less than 12	92.5
Sub 8	12 but less than 15	85
Sub 9	15 but less than 22.5	70
Sub 10	22.5 but less than 30	65
Sub 11	30 or greater	60
39272	NOTE—No Change.	
⇒56400	DENTAL, HOSPITAL, MEDICAL OR SURGICAL SUPPLY GROUP: see Note, item 56401	
56401	NOTE—No Change.	
56440	Apparatus , gas or oxygen administering, other than expendable breathing circuits or expendable administration sets, etc.... ⇒Cancel; see item E-NEW	
56445	Apparatus , pulmonary assistance, consisting of portable air compressor and nebulizer with tubing and mouthpiece, etc..... ⇒Cancel; see item E-NEW	
56533	Carts , medication storage and dispensing (Medication Carts) or patient treatment (Treatment Carts), metal or metal and plastic combined, see Note, item 56534, with or without complement of drawers, etc ⇒Cancel; see item 188560	
56534	NOTE—⇒Cancel; no further application.	
56540	Chests , X-ray film, sheet steel, lead lined, etc..... ⇒Cancel; see item 39270	
56550	Commodes, Commode Chairs or Commode Stations , sanitary, with toilet seat or waste pail, etc..... ⇒Cancel; see item B-NEW	
56551	NOTE—⇒Cancel; no further application.	
56555	Concentrators , oxygen, see Note, item 56557, etc ⇒Cancel; see item E-NEW	
56557	NOTE—⇒Cancel; see Note, item G-NEW.	
56560	Containers , blood collecting, glass, less than 1/2 pint capacity, with or without stoppers, empty, see Note, item 56562, etc ⇒Cancel; see item B-NEW	
56562	NOTE—⇒Cancel; no further application.	

SUBJECT 3

Proposed Classification Provisions — Continued

Item	Description	Class
	DENTAL, HOSPITAL, MEDICAL OR SURGICAL SUPPLY GROUP: subject to item 56400	
56600	Crutches, etc	⇒Cancel; see item D-NEW
56620	Dental Cement, etc	⇒Cancel; see item A-NEW
⇒A-NEW	Dental Cement, Plaster or Compounds, in boxes, subject to Item 170 and having a density in pounds per cubic foot of:	
Sub 1	Less than 10	125
Sub 2	10 but less than 15	85
Sub 3	15 but less than 30	70
Sub 4	30 or greater	55
56630	Dental Fountain Bowls or Cuspidors, etc	⇒Cancel; see item B-NEW
56640	Dental Goods, NOI, other than plastic, etc	⇒Cancel; see item B-NEW
⇒B-NEW	Dental, Hospital, Medical or Surgical Apparatus, Instruments, Machines or Supplies, NOI, see Note, item C-NEW, in boxes, subject to Item 170 and having a density in pounds per cubic foot of:	
Sub 1	Less than 1	400
Sub 2	1 but less than 2	300
Sub 3	2 but less than 4	250
Sub 4	4 but less than 6	175
Sub 5	6 but less than 8	125
Sub 6	8 but less than 10	100
Sub 7	10 but less than 12	92.5
Sub 8	12 but less than 15	85
Sub 9	15 but less than 22.5	70
Sub 10	22.5 but less than 30	65
Sub 11	30 or greater	60

SUBJECT 3

Proposed Classification Provisions — Continued

Item	Description	Class
	DENTAL, HOSPITAL, MEDICAL OR SURGICAL SUPPLY GROUP: subject to item 56400	
⇒C-NEW	NOTE—Provisions for dental, hospital, medical or surgical apparatus, instruments, machines or supplies include, but are not limited to: Bandages or Dressings , NOI; Blankets , emergency first aid for burn victims; Braces, Collars, Splints or Supports ; Clinical Thermometers ; Commodes, Commode Chairs or Commode Stations , sanitary; Compresses , hot or cold, NOI; Containers , blood collecting; Dental Units ; Dental Fountain Bowls or Cuspidors ; Dialyzers , artificial kidney machine; Driers , X-ray film; Droppers, medicine (Eyedroppers), or Medicine Droppers and Bottle Caps combined ; Electrodes , patient monitoring or testing instrument or device; Kits or Sets , expendable aspirating, administration or transference; Kits or Sets , patient care, comfort or treatment, consisting of articles for the personal care or comfort of the patient; Limbs , artificial or prosthetic; Medical Treatment Accessories , with or without chemicals, drugs or medicines, other than narcotics; Pads or Sponges , dental, medical or surgical, NOI; Processors , blood cell, centrifugal; Safes , X-ray film; Stretchers or Litters ; Surgical Stapling Machines (Staplers) or Suturing Machines ; Swabs, Swab Sticks or Swab-type Applicators ; Tape , adhesive; Trusses , medical or surgical, or Hernia Belts .	
56660	Dental Impression Compound , etc.....	⇒Cancel; see item A-NEW
56670	Dental Investment Compound or Dental Plaster , etc.....	⇒Cancel; see item A-NEW
56680	Dental, Medical or Surgical Instruments or Machines , etc	⇒Cancel; see item B-NEW
56682	NOTE—⇒Cancel; no further application.	
56695	Dental Units , etc.....	⇒Cancel; see item B-NEW
56705	Dialyzers , artificial kidney machine, plastic, expendable, etc.....	⇒Cancel; see item B-NEW

SUBJECT 3

Proposed Classification Provisions — Continued

Item	Description	Class
	DENTAL, HOSPITAL, MEDICAL OR SURGICAL SUPPLY GROUP: subject to item 56400	
56720	Driers , X-ray film, steel, etc.....	⇒Cancel; see item B-NEW
56740	Droppers , medicine (Eyedroppers), or Medicine Droppers and Bottle Caps combined , etc	⇒Cancel; see item B-NEW
56750	Electrodes , patient monitoring or testing instrument or device, plastic and metal combined, expendable, etc	⇒Cancel; see item B-NEW
56760	Electro-therapeutic Cabinets or Plates , table or wall, or Electro-therapeutic or Diathermic Instruments or Apparatus , NOI, etc	⇒Cancel; see item B-NEW
56765	Forceps , suture, disposable, steel, etc.....	⇒Cancel; see item B-NEW
56770	Frames , fracture treatment, overhead or lateral, etc.....	⇒Cancel; see item B-NEW
56775	Kits , enema, expendable, consisting of plastic containers, administering apparatus and chemical compounds, etc	⇒Cancel; see item B-NEW
56785	Kits or Sets , patient care, comfort or treatment, etc	⇒Cancel; see item B-NEW
56786	NOTE—⇒Cancel; no further application.	
56787	NOTE—⇒Cancel; no further application.	
56788	NOTE—⇒Cancel; no further application.	
56789	NOTE—⇒Cancel; no further application.	
56795	Kits , X-ray, etc	⇒Cancel; see item B-NEW
56820	Limbs , artificial or prosthetic, etc	⇒Cancel; see item B-NEW
56828	Medical Supplies , etc	⇒Cancel; see item B-NEW
56833	Machines , surgical suturing or stapling, etc	⇒Cancel; see item B-NEW
⇒D-NEW	Mobility Aids , NOI, other than self-propelled, including Crutches, Walkers or Wheelchairs , in boxes, subject to Item 170 and having a density in pounds per cubic foot of:	
Sub 1	Less than 5	250
Sub 2	5 or greater	150
56835	Pads or Swabs , saturated with rubbing alcohol, etc.....	⇒Cancel; see item B-NEW
56837	Processors , blood cell, centrifugal, etc	⇒Cancel; see Item B-NEW

SUBJECT 3

Proposed Classification Provisions — Continued

Item	Description	Class
	DENTAL, HOSPITAL, MEDICAL OR SURGICAL SUPPLY GROUP: subject to item 56400	
56860	Respirators , mechanical, etc	⇒Cancel; see item E-NEW
⇒E-NEW	Respiratory Therapy Aids, viz.: Apparatus or Sets , gas or oxygen administration, other than expendable breathing circuits or administration sets, see Note, item F-NEW; Apparatus , pulmonary assistance, consisting of portable air compressor and nebulizer with tubing and mouthpiece; Oxygen Concentrators , see Note, item G-NEW; Respirators , mechanical; Vaporizers , other than electric, with or without medicine; In boxes, subject to Item 170 and having a density in pounds per cubic foot of:	
Sub 1	Less than 6	200
Sub 2	6 but less than 10.....	125
Sub 3	10 or greater.....	85
⇒F-NEW	NOTE—Does not apply on recreational oxygen in handheld canisters or containers. For applicable provisions, see item 86070.	
⇒G-NEW	NOTE—Applies on mechanical devices designed to filter nitrogen and contaminants from ambient air to supply patient with oxygen.	
56880	Safes , X-ray film, cast iron, etc.....	⇒Cancel; see item B-NEW
56890	Seals , ostomy, karaya gum and natural gums combined, etc.....	⇒Cancel; see item B-NEW
56910	Sets , oxygen administration, consisting of oxygen in steel cylinders not over 240 cubic inches capacity, plastic tubing and plastic administering mask, with or without regulators, see Note, item 56911, etc	⇒Cancel; see item E-NEW
56911	NOTE—⇒Cancel; see Note, item F-NEW.	
56920	Stretchers or Litters , ambulance, emergency response, patient transport or hospital, etc	⇒Cancel; see item B-NEW
56940	Sutures , surgical, with or without accompanying wound closure material, other than wound stapling devices, etc.....	⇒Cancel; see item B-NEW
56950	Swabs, Swab Sticks or Swab-type Applicators , consisting of paper, plastic or wood sticks with cotton or synthetic fiber tips, single- or double-tipped, not saturated nor medicated, etc	⇒Cancel; see item B-NEW

SUBJECT 3

Proposed Classification Provisions — Continued

Item	Description	Class
	DENTAL, HOSPITAL, MEDICAL OR SURGICAL SUPPLY GROUP: subject to item 56400	
56960	Syringes , administration, expendable, plastic, with or without needles, etc	⇒Cancel; see item B-NEW
56970	Tape , adhesive, etc	⇒Cancel; see item B-NEW
56980	Tongue Depressing Blades or Swab Applicators , wood, paper or plastic, etc.....	⇒Cancel; see item B-NEW
57010	Tubes , integrated, blood serum separator, glass, see Note, item 57011, etc	⇒Cancel; see item B-NEW
57011	NOTE—⇒Cancel; no further application.	
57020	Vaporizers , other than electric, with or without medicine, etc	⇒Cancel; see item E-NEW
57060	Walkers , tubular metal, wheeled or not wheeled, etc	⇒Cancel; see item D-NEW
57075	Wheelchairs , other than motor-propelled, etc.....	⇒Cancel; see item D-NEW
	VEHICLES, OTHER THAN SELF-PROPELLED: subject to item 188500	
188560	Barrows, Carts, Trucks, Wagons or Wheelbarrows , NOI, hand, in packages, see Note, item 188561, subject to Item 170 and having a density in pounds per cubic foot of:	
Sub 1	Less than 1	400
Sub 2	1 but less than 2	300
Sub 3	2 but less than 4	250
Sub 4	4 but less than 6	175
Sub 5	6 but less than 8	125
Sub 6	8 but less than 10	100
Sub 7	10 but less than 12	92.5
Sub 8	12 but less than 15	85
Sub 9	15 but less than 22.5	70
Sub 10	22.5 but less than 30	65
Sub 11	30 or greater	60
188561	NOTE—No Change.	

Package 2233

⇒Cancel; no further application.

SUBJECT 3

Proposed Classification Provisions — Concluded

Package 2250

⇒Cancel; no further application.

Package 2376

⇒Cancel; no further application.

Analysis

Introduction

There are currently four items in the Dental, Hospital or Medical Supply Group—items 56785, 56828, 56960 and 57060, as shown in the Present Classification Provisions herein—that assign the FCDC’s standard 11-subprovision density scale. This creates undue complexity.

There are also numerous other items in the Dental, Hospital or Medical Supply Group that name specific dental, hospital, medical or surgical apparatus, instruments, machines or supplies, and these provisions can be difficult to interpret, apply or verify. While many of the involved commodities exhibit a wide range of densities, other commodities such as dental cement, plaster or compounds, as named in items 56620, 56660 and 56670, mobility aids, as named in items 56600, 57060 and 57075, and respiratory therapy aids, as named in items 56440, 56445, 56555, 56860, 56910 and 57020, exhibit narrower density distributions. The transportation characteristics below relate to the items shown in the Present Classification Provisions herein.

Transportation Characteristics

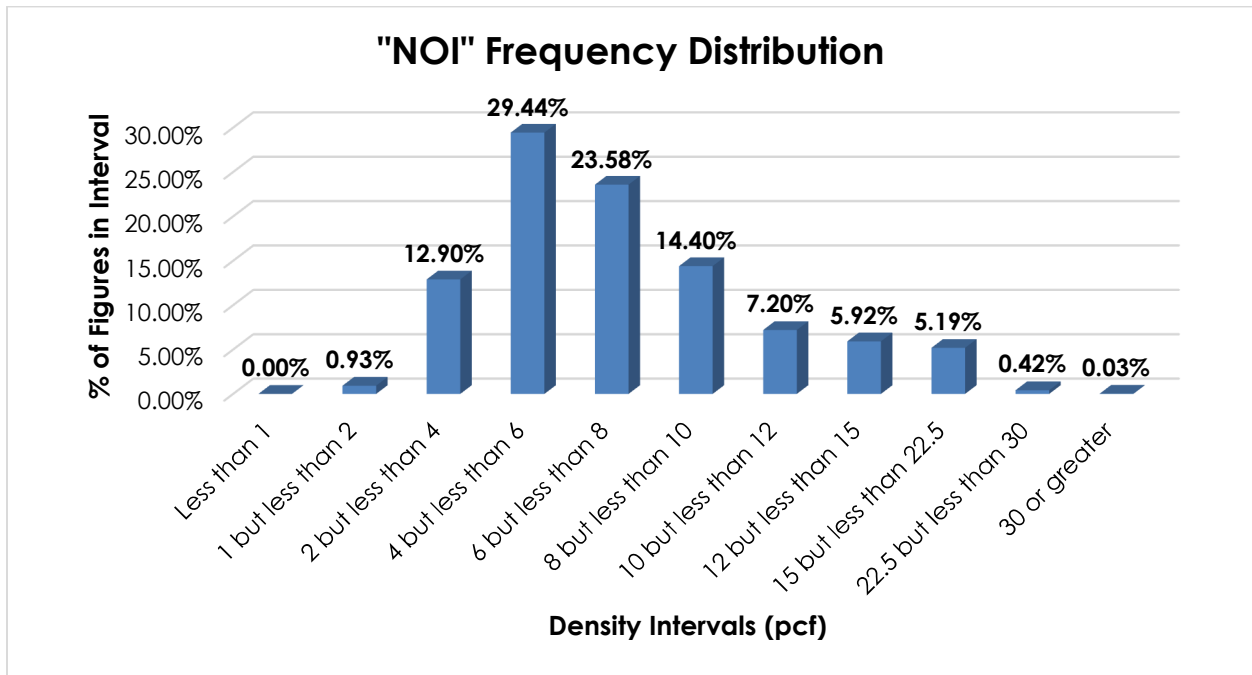
Density—The information of record includes 173,452 density observations obtained from the FCDC’s Density Study¹. The densities range from 1.01 to 71.65 pcf, with an overall average density of 7.59 pcf.

The graphs and the tables on the following pages show the frequency distributions, density ranges, averages and concentrations of density observations for the proposed provisions.

¹ The Density Study is part of an ongoing effort by the FCDC to collect information on actual shipments across all product categories handled by the LTL industry. Carriers that choose to participate in the Study periodically submit shipment data captured through their respective freight auditing programs. The FCDC uses verifiable data points, identified by NMFC item, that include the weight and the dimensions and/or cube of the shipping unit.

SUBJECT 3

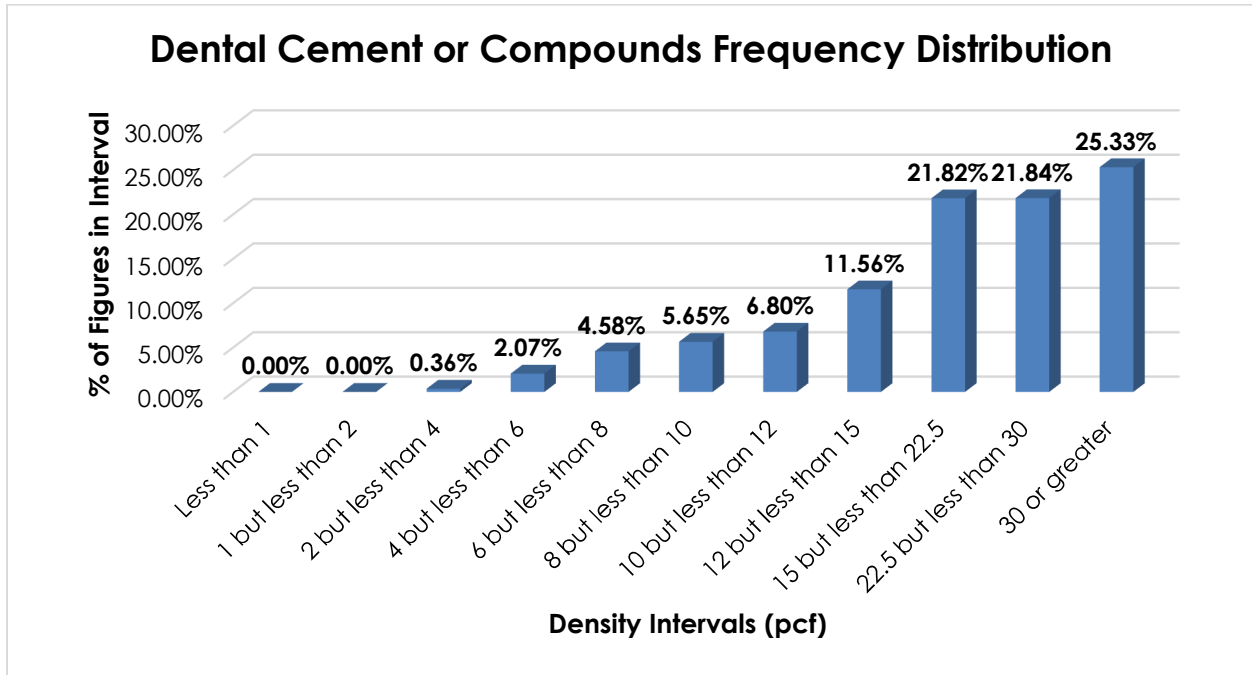
The information of record on commodities moving under items 56533, 56540, 56550, 56560, 56630, 56640, 56680, 56695, 56705, 56720, 56740, 56750, 56760, 56765, 56770, 56775, 56785, 56795, 56820, 56828, 56833, 56835, 56837, 56880, 56890, 56920, 56940, 56950, 56960, 56970, 56980 and 57010 includes 139,293 density observations. The densities range from 1.01 to 50.00 pcf, with an overall average density of 7.43 pcf. As shown in the graph below, the densities are widely distributed throughout most of the range.



THIS SPACE INTENTIONALLY LEFT BLANK

SUBJECT 3

The information of record on commodities moving under items 56620, 56660 and 56670 includes 5,224 density observations. The densities range from 2.29 to 71.65 pcf, with an overall average density of 22.14 pcf. As shown in the graph below, the density distribution is skewed left, with approximately 69% of the figures 15 pcf or greater. Density breaks at 10, 15 and 30 pcf reflect the modality and distribution of figures.

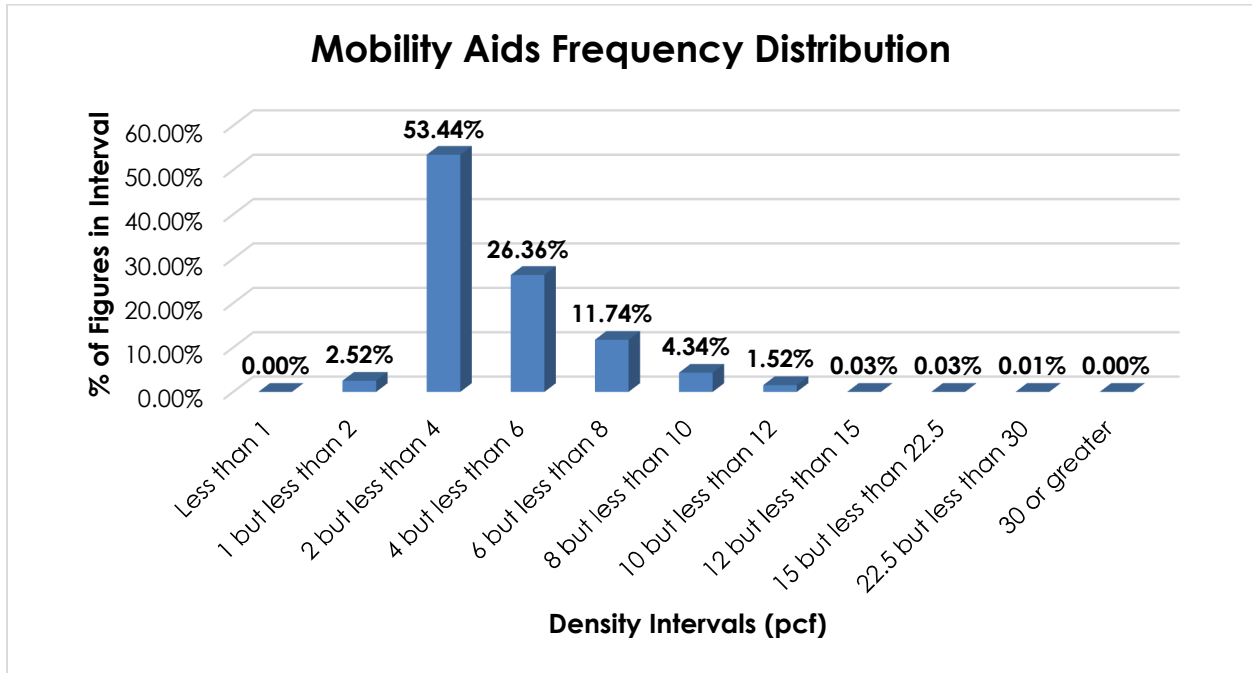


When the data is evaluated based on the proposed density breaks at 10, 15 and 30 pcf, the density ranges and averages shown in the table below emerge.

Density Group (pcf)	Density Range (pcf)	Average Density (pcf)
Less than 10	2.29 – 9.99	7.55
10 but less than 15	10.00 – 14.98	12.51
15 but less than 30	15.00 – 29.99	22.21
30 or greater	30.00 – 71.65	36.29

SUBJECT 3

The information of record on commodities moving under items 56600, 57060 and 57075 includes 23,640 density observations. The densities range from 1.04 to 25.20 pcf, with an overall average density of 4.32 pcf. As shown in the graph below, the distribution is clustered around the average density, but the average density is not reflected in the predominant peak. A density break at 5 pcf more closely represents the modality and distribution of the figures.

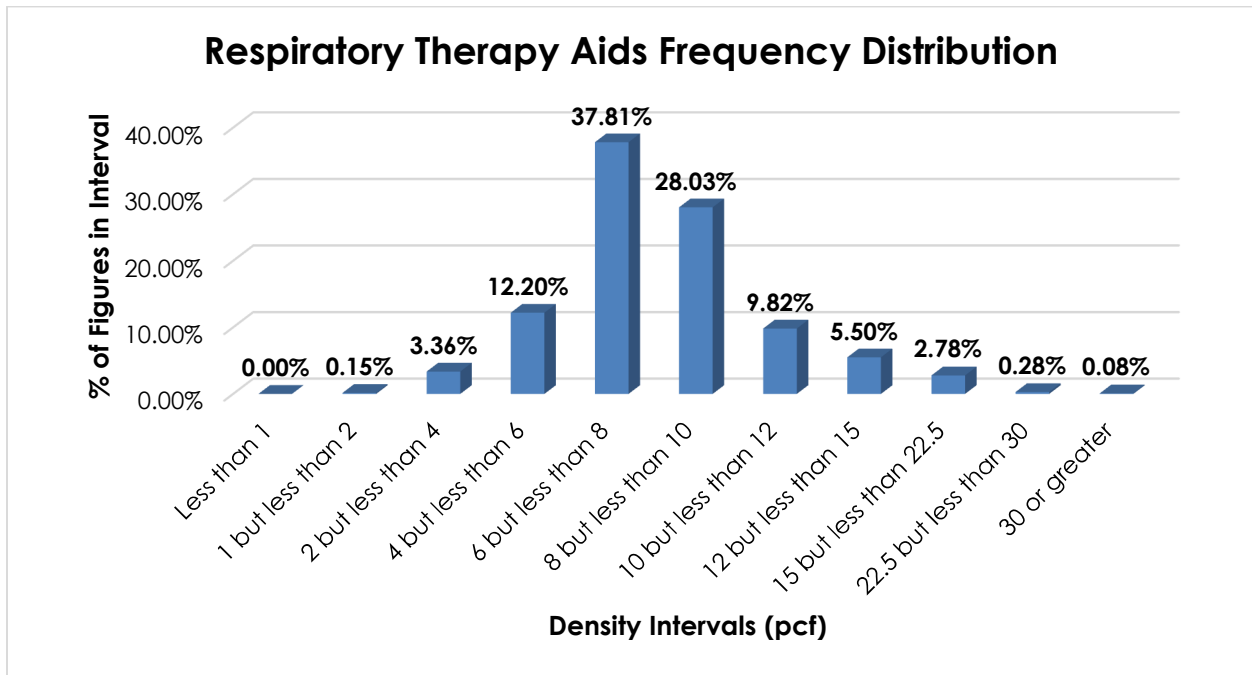


When the data is evaluated based on the proposed density break at 5 pcf, the density ranges and averages shown in the table below emerge.

Density Group (pcf)	Density Range (pcf)	Average Density (pcf)
Less than 5	1.04 – 4.99	3.31
5 or greater	5.00 – 25.20	6.85

SUBJECT 3

The information of record on commodities moving under items 56440, 56445, 56555, 56860, 56910 and 57020 includes 5,295 density observations. The densities range from 1.07 to 45.10 pcf, with an overall average density of 8.23 pcf. As shown in the graph below, most of the figures are clustered between 4 and 12 pcf, but the average density is not reflected in the predominant peak. Density breaks at 6 and 10 pcf more closely represent the modality and distribution of the data.



When the data is evaluated based on the proposed density breaks at 6 and 10 pcf, the density ranges and averages shown in the table below emerge.

Density Group (pcf)	Density Range (pcf)	Average Density (pcf)
Less than 6	1.07 – 5.99	4.68
6 but less than 10	6.00 – 9.99	7.80
10 or greater	10.00 – 45.10	12.81

Handling, Stowability and Liability—There have been no reports of unusual or significant handling, stowability or liability concerns.

Conclusion

Based on the foregoing analysis, it is proposed to cancel items 56533, 56540, 56550, 56560, 56630, 56640, 56680, 56695, 56705, 56720, 56740, 56750, 56760, 56765, 56770, 56775, 56785, 56795, 56820, 56828, 56833, 56835, 56837, 56880, 56890, 56920, 56940, 56950, 56960, 56970, 56980 and 57010 with reference to a new item, naming “Dental, Hospital, Medical or Surgical Apparatus, Instruments, Machines or Supplies, NOI,” with classes predicated on the

SUBJECT 3

FCDC’s standard 11-subprovision density scale². Item 56533 would be canceled with reference to 188560, and item 56540 would be canceled with reference to item 39270.

It is proposed to cancel items 56620, 56660 and 56670, with reference to a new item, naming “Dental Cement, Plaster or Compounds,” with classes predicated on density breaks at 10, 15 and 30 pcf³, as shown in the table below.

Density Group (pcf)	Average Density (pcf)	FCDC Minimum Average Density Guideline (pcf)	Class Based on FCDC Density Guidelines
Less than 10	7.55	7	125
10 but less than 15	12.51	12	85
15 but less than 30	22.21	15	70
30 or greater	36.29	35	55

It is proposed to cancel items 56600, 57060 and 57075, with reference to a new item, naming “Mobility Aids, NOI, other than self-propelled, including Crutches, Walkers or Wheelchairs,” with classes predicated on a density break at 5 pcf³, as shown in the table below.

Density Group (pcf)	Average Density (pcf)	FCDC Minimum Average Density Guideline (pcf)	Class Based on FCDC Density Guidelines
Less than 5	3.31	3	250
5 or greater	6.85	6	150

It is proposed to cancel items 56440, 56445, 56555, 56860, 56910 and 57020, with reference to a new “viz.” item for “Respiratory Therapy Aids,” with classes predicated on density breaks at 6 and 10 pcf³, as shown in the table below.

Density Group (pcf)	Average Density (pcf)	FCDC Minimum Average Density Guideline (pcf)	Class Based on FCDC Density Guidelines
Less than 6	4.68	4	200
6 but less than 10	7.80	7	125
10 or greater	12.81	12	85

Other changes are proposed in the interest of clarification, simplification and uniformity.

Additionally, on the recommendation of the FCDC’s Packaging Manager, Packages 2233, 2250 and 2376 would be canceled with no further application.

² The FCDC’s standard 11-subprovision density scale includes reference to Item (Rule) 170, the inadvertence clause.

³ The density provisions would include reference to Item (Rule) 170, the inadvertence clause.