

SUBJECT 2

Re: Plastic or Rubber Articles

Contact: Joel L. Ringer Telephone — (703) 838-1826 ringer@nmfta.org

Proponent: Freight Classification Development Council

Present Classification Provisions

| Item | Description | Class |
|--------|---|-------|
| 25328 | Bobbins; Cores , winding or filter; Cop Tubes; Dye Tubes; Pirns; Reels; or Spools; plastic, in boxes, subject to Item 170 and having a density in pounds per cubic foot of: | |
| Sub 1 | Less than 1..... | 400 |
| Sub 2 | 1 but less than 2..... | 300 |
| Sub 3 | 2 but less than 4..... | 250 |
| Sub 4 | 4 but less than 6..... | 175 |
| Sub 5 | 6 but less than 8..... | 125 |
| Sub 6 | 8 but less than 10..... | 100 |
| Sub 7 | 10 but less than 12..... | 92.5 |
| Sub 8 | 12 but less than 15..... | 85 |
| Sub 9 | 15 but less than 22.5..... | 70 |
| Sub 10 | 22.5 but less than 30..... | 65 |
| Sub 11 | 30 or greater..... | 60 |
| | CLOTHING GROUP: subject to item 49790 | |
| 49880 | Clothing , see Notes, items 49881 and 49885, viz.: Clothing, Garments or Apparel , NOI; [Other Articles Listed—Not Involved.] In boxes or Packages 1401 or 2265, subject to Item 170 and having a density in pounds per cubic foot of: | |
| Sub 1 | Less than 1..... | 400 |
| Sub 2 | 1 but less than 2..... | 300 |
| Sub 3 | 2 but less than 4..... | 250 |
| Sub 4 | 4 but less than 6..... | 175 |
| Sub 5 | 6 but less than 8..... | 125 |
| Sub 6 | 8 but less than 10..... | 100 |
| Sub 7 | 10 but less than 12..... | 92.5 |
| Sub 8 | 12 but less than 15..... | 85 |
| Sub 9 | 15 but less than 22.5..... | 70 |
| Sub 10 | 22.5 but less than 30..... | 65 |
| Sub 11 | 30 or greater..... | 60 |
| 49881 | NOTE—Not Involved. | |
| 49885 | NOTE—Not Involved. | |
| 49886 | NOTE—Not Involved. | |

SUBJECT 2

Present Classification Provisions — Continued

| Item | Description | Class |
|--------|--|-------|
| | COOLERS GROUP: subject to item 53000 | |
| 53025 | Coolers, Iceboxes or Refrigerators , NOI, without mechanical cooling or freezing apparatus, see Note, item 53026, in boxes, crates or Package 107, subject to Item 170 and having a density in pounds per cubic foot of: | |
| Sub 1 | Less than 1 | 400 |
| Sub 2 | 1 but less than 2 | 300 |
| Sub 3 | 2 but less than 4 | 250 |
| Sub 4 | 4 but less than 6 | 175 |
| Sub 5 | 6 but less than 8 | 125 |
| Sub 6 | 8 but less than 10 | 100 |
| Sub 7 | 10 but less than 12 | 92.5 |
| Sub 8 | 12 but less than 15 | 85 |
| Sub 9 | 15 but less than 22.5 | 70 |
| Sub 10 | 22.5 but less than 30 | 65 |
| Sub 11 | 30 or greater | 60 |
| 53026 | NOTE—Not Involved. | |
| 56290* | Decorations, Notions or Novelties , see Notes, items 56291 and 56292, viz.: Curios, Figures, Images, Ornaments, Sculpture or Statuary , NOI, see Note, item 56295; Decorations, Notions or Novelties , NOI; Decorations or Ornaments , Christmas tree or holiday, NOI; [Other Articles Listed—Not Involved.] In boxes, subject to Item 170 and having a density in pounds per cubic foot of: | |
| Sub 1 | Less than 1 | 400 |
| Sub 2 | 1 but less than 2 | 300 |
| Sub 3 | 2 but less than 4 | 250 |
| Sub 4 | 4 but less than 6 | 175 |
| Sub 5 | 6 but less than 8 | 125 |
| Sub 6 | 8 but less than 10 | 100 |
| Sub 7 | 10 but less than 12 | 92.5 |
| Sub 8 | 12 but less than 15 | 85 |
| Sub 9 | 15 but less than 22.5..... | 70 |
| Sub 10 | 22.5 but less than 30..... | 65 |
| Sub 11 | 30 or greater..... | 60 |
| 56291 | NOTE—Not Involved. | |
| 56292 | NOTE—Not Involved. | |
| 56294 | NOTE—Not Involved. | |
| 56295 | NOTE—Not Involved. | |

*Published in Supplement 2 to NMF 100-AV, effective August 13, 2022.

SUBJECT 2

Present Classification Provisions — Continued

| Item | Description | Class |
|--------|---|-------|
| | ELECTRICAL EQUIPMENT GROUP: subject to item 60500 | |
| 63160* | Switches, Switch Boxes, Electrical Enclosures or Electrical Wiring Equipment, see Note, item 63162, viz.: Fittings, electrical conduit, NOI; [Other Articles Listed—Not Involved.] In boxes, see Note, item 63161, subject to Item 170 and having a density in pounds per cubic foot of: | |
| Sub 1 | Less than 1 | 400 |
| Sub 2 | 1 but less than 2..... | 300 |
| Sub 3 | 2 but less than 4..... | 250 |
| Sub 4 | 4 but less than 6..... | 175 |
| Sub 5 | 6 but less than 8..... | 125 |
| Sub 6 | 8 but less than 10..... | 100 |
| Sub 7 | 10 but less than 12..... | 92.5 |
| Sub 8 | 12 but less than 15..... | 85 |
| Sub 9 | 15 but less than 22.5..... | 70 |
| Sub 10 | 22.5 but less than 30..... | 65 |
| Sub 11 | 30 or greater | 60 |
| 63161 | NOTE—Not Involved. | |
| 63162 | NOTE—Not Involved. | |
| 63163 | NOTE—Not Involved. | |
| | GAMES OR TOYS GROUP: subject to item 83900 | |
| 84260 | Games or Toys, viz.: Games or Toys, NOI; [Other Articles Listed—Not Involved.] In boxes or Packages 2213, 2249 or 2296, subject to Item 170 and having a density in pounds per cubic foot of: | |
| Sub 1 | Less than 1 | 400 |
| Sub 2 | 1 but less than 2..... | 300 |
| Sub 3 | 2 but less than 4..... | 250 |
| Sub 4 | 4 but less than 6..... | 175 |
| Sub 5 | 6 but less than 8..... | 125 |
| Sub 6 | 8 but less than 10..... | 100 |
| Sub 7 | 10 but less than 12..... | 92.5 |
| Sub 8 | 12 but less than 15..... | 85 |
| Sub 9 | 15 but less than 22.5..... | 70 |
| Sub 10 | 22.5 but less than 30..... | 65 |
| Sub 11 | 30 or greater | 60 |
| 84261 | NOTE—Not Involved. | |
| 84262 | NOTE—Not Involved. | |

*Published in Supplement 2 to NMF 100-AV, effective August 13, 2022.

SUBJECT 2

Present Classification Provisions — Continued

| Item | Description | Class |
|---------|--|-------|
| | INSULATION OR INSULATING MATERIAL GROUP: subject to item 103000 | |
| 103300 | Insulation or Insulating Material, viz.: Insulation or Insulating Material, NOI; [Other Articles Listed—Not Involved.] In packages, subject to Item 170 and having a density in pounds per cubic foot of: | |
| Sub 1 | Less than 1 | 400 |
| Sub 2 | 1 but less than 2..... | 300 |
| Sub 3 | 2 but less than 4..... | 250 |
| Sub 4 | 4 but less than 6..... | 175 |
| Sub 5 | 6 but less than 8..... | 125 |
| Sub 6 | 8 but less than 10..... | 100 |
| Sub 7 | 10 but less than 12..... | 92.5 |
| Sub 8 | 12 but less than 15..... | 85 |
| Sub 9 | 15 but less than 22.5..... | 70 |
| Sub 10 | 22.5 but less than 30..... | 65 |
| Sub 11 | 30 or greater..... | 60 |
| 103301 | NOTE—Not Involved. | |
| | LAMPS OR LIGHTING GROUP: subject to item 109000 | |
| 109700* | Lamps or Lighting Fixtures, see Notes, items 109701, 109702, 109703 and 109704, viz.: Lamps, NOI, also in Packages 817, 1424, 2204 or 5F; [Other Articles Listed—Not Involved.] In boxes or crates, subject to Item 170 and having a density in pounds per cubic foot of, see Note, item 109706: | |
| Sub 1 | Less than 1 | 400 |
| Sub 2 | 1 but less than 2..... | 300 |
| Sub 3 | 2 but less than 4..... | 250 |
| Sub 4 | 4 but less than 6..... | 175 |
| Sub 5 | 6 but less than 8..... | 125 |
| Sub 6 | 8 but less than 10..... | 100 |
| Sub 7 | 10 but less than 12..... | 92.5 |
| Sub 8 | 12 but less than 15..... | 85 |
| Sub 9 | 15 but less than 22.5..... | 70 |
| Sub 10 | 22.5 but less than 30..... | 65 |
| Sub 11 | 30 or greater..... | 60 |
| 109701 | NOTE—Not Involved. | |
| 109702 | NOTE—Not Involved. | |
| 109703 | NOTE—Not Involved. | |
| 109704 | NOTE—Not Involved. | |
| 109705 | NOTE—Not Involved. | |
| 109706 | NOTE—Not Involved. | |

*Published in Supplement 2 to NMF 100-AV, effective August 13, 2022.

SUBJECT 2

Present Classification Provisions — Continued

| Item | Description | Class |
|--------|---|-------|
| | MACHINERY GROUP: subject to item 114000 | |
| 133300 | Machinery or Machines, NOI, or Machinery or Machine Parts, NOI: | |
| Sub 1 | In boxes, crates or Packages 107, 1082 or 2107, subject to Item 170 and having a density in pounds per cubic foot of: | |
| Sub 2 | Less than 5 | 250 |
| Sub 3 | 5 but less than 10 | 125 |
| Sub 4 | 10 but less than 15 | 85 |
| Sub 5 | 15 or greater..... | 65 |
| Sub 6 | On skids or in packages other than boxes, crates or Packages 107, 1082 or 2107, subject to Item 170 and having a density in pounds per cubic foot of: | |
| Sub 7 | Less than 5 | 400 |
| Sub 8 | 5 but less than 10 | 175 |
| Sub 9 | 10 but less than 15 | 100 |
| Sub 10 | 15 or greater..... | 77.5 |

THIS SPACE INTENTIONALLY LEFT BLANK

SUBJECT 2

Present Classification Provisions — Continued

| Item | Description | Class |
|--------|---|-------|
| 149265 | <p>PADS, PADDING AND RELATED ARTICLES GROUP: subject to item 149000</p> <p>Pads, Padding, Cushions or Pillows, see Note, item 149269, viz.:</p> <p>Berms, spill containment;</p> <p>Booms, Pads, Sweeps or Other Forms or Shapes, chemical or oil absorption;</p> <p>Cushions, aircraft seat or railway car seat;</p> <p>Cushions, automotive safety restraint system, cloth (Air Bag Inflator Cushions);</p> <p>Cushions, NOI;</p> <p>Excelsior, NOI; or Shredded Paper Packing Material;</p> <p>Futons;</p> <p>Packing Material, loosefill, NOI, including Packing Peanuts, Pellets, Disks or Other Forms or Shapes;</p> <p>Pads, mattress;</p> <p>Pads or Cushions, packing; excelsior, grass, hay, straw or shredded or macerated paper;</p> <p>Pads or Padding, NOI;</p> <p>Pillows or Pillow Forms (Unfinished Pillows), NOI;</p> <p>Seat Backs, railway car, upholstered or padded;</p> <p>In packages, subject to Item 170 and having a density in pounds per cubic foot of:</p> | |
| Sub 1 | Less than 1 | 400 |
| Sub 2 | 1 but less than 2..... | 300 |
| Sub 3 | 2 but less than 4..... | 250 |
| Sub 4 | 4 but less than 6..... | 175 |
| Sub 5 | 6 but less than 8..... | 125 |
| Sub 6 | 8 but less than 10..... | 100 |
| Sub 7 | 10 but less than 12..... | 92.5 |
| Sub 8 | 12 but less than 15..... | 85 |
| Sub 9 | 15 but less than 22.5..... | 70 |
| Sub 10 | 22.5 but less than 30..... | 65 |
| Sub 11 | 30 or greater..... | 60 |
| 149269 | <p>NOTE—Does not apply on polypropylene in sheet form, polyethylene in sheet form or polystyrene in sheet form when the packaged density as shipped is less than one pound per cubic foot. Such articles are classified in item 157463.</p> | |

SUBJECT 2

Present Classification Provisions — Continued

| Item | Description | Class |
|---------|--|-------|
| 156500 | PLASTIC OR RUBBER ARTICLES, OTHER THAN EXPANDED, GROUP: Articles consist of Plastic or Rubber Articles, other than foam, cellular, expanded or sponge articles, see Item 110, Sec. 15 and Note, item 156502, as described in items subject to this grouping. | |
| 156502 | NOTE—Unless otherwise provided, provisions also apply when articles have components or affixed accessories made from other materials. | |
| 156600* | <p>Articles, viz.:</p> <p>Articles, NOI;</p> <p>Boot or Shoe Forms or Trees, other than display forms or trees;</p> <p>Caps, Covers, Discs, Ends, Bands, Rings or Tops, NOI, for bottles, cans, cups, collapsible tubes, glasses, jars or jugs;</p> <p>Car Seats, child or baby;</p> <p>Columns; or other Forms or Shapes, NOI; architectural;</p> <p>Containers, packaging, NOI;</p> <p>Dinnerware or Tableware, NOI;</p> <p>Filmstrip or Audio or Video Cassette Storage Albums;</p> <p>Garbage or Refuse Cans;</p> <p>Gloves, see Note, item 156604;</p> <p>Grips, NOI, including Golf Club, Hand Tool or Handlebar Grips;</p> <p>Liners, swimming pool, plastic film or sheeting;</p> <p>Mats, bathtub, shower stall, drainboard, sink or stove protector;</p> <p>Molding, other than baseboard or cove;</p> <p>Motion Picture Film Cans, Cores, Magazines, Reels or Film Spools, empty;</p> <p>Pipe or Pipe Fittings;</p> <p>Poultry Watering Systems, see Note, item 156603;</p> <p>Tanks, NOI;</p> <p>Tractor Treads, rubber;</p> <p>Tubing, NOI, other than flexible;</p> <p style="padding-left: 40px;">In boxes, crates, drums or Packages 1078, 1241, 1273 or 2213, see Note, item 156602, subject to Item 170 and having a density in pounds per cubic foot of:</p> | |
| Sub 1 | Less than 1 | 400 |
| Sub 2 | 1 but less than 2..... | 300 |
| Sub 3 | 2 but less than 4..... | 250 |
| Sub 4 | 4 but less than 6..... | 175 |
| Sub 5 | 6 but less than 8..... | 125 |
| Sub 6 | 8 but less than 10..... | 100 |
| Sub 7 | 10 but less than 12..... | 92.5 |
| Sub 8 | 12 but less than 15..... | 85 |
| Sub 9 | 15 but less than 22.5..... | 70 |
| Sub 10 | 22.5 but less than 30..... | 65 |
| Sub 11 | 30 or greater..... | 60 |

*Published in Supplement 1 to NMF 100-AV, effective April 9, 2022.

SUBJECT 2

Present Classification Provisions — Continued

| Item | Description | Class |
|---------|--|-------|
| | PLASTIC OR RUBBER ARTICLES, OTHER THAN EXPANDED, GROUP: subject to item 156500 | |
| 156602* | NOTE—The following departures from packing requirements are permitted: 1-8. Not Involved. 9. Plastic chairs may be shipped in Package 31F. 10. The following articles may be shipped in packages: a. Garbage or refuse cans; b. Plastic bottle carrying boxes or crates; c. Plastic tanks, other than outer shipping containers; d. Poultry watering systems. | |
| 156603 | NOTE—Applies on poultry watering systems consisting of pipe, plastic drinkers, water filtering, metering or regulating devices and equipment necessary for installation, with or without other components or accessories. | |
| 156604 | NOTE—Does not apply on any commodity which is defined and specified as medical waste in Federal regulations. For applicable class, see item 101682. | |
| 156620 | Aprons or Bibs , plastic film, expendable, not combined, reinforced nor assembled with other materials, in boxes..... | 70 |
| 156630 | Bands , elastic, including Rubber Bands , in boxes, subject to Item 170 and having a density in pounds per cubic foot of: | |
| Sub 1 | Less than 15..... | 85 |
| Sub 2 | 15 or greater | 70 |
| 156640 | Bars, Blocks or Rods , NOI, in packages..... | 70 |
| 156642 | Baskets, Holders or Filters , coffee, automatic coffee maker, plastic and cloth combined, in boxes | 300 |
| 156643 | Bends, Elbows or Sweeps , electrical conduit, not exceeding four inches in diameter, tightly bound in bundles and secured between a bottom and top four-piece wooden skid framework by strapping | 100 |
| 156644 | Blanks , button, plastic, in bags, boxes or drums..... | 65 |
| 156645 | Blocks or Spacers , floor mat, in bags or boxes | 70 |
| 156647 | Boards or Blocks , cutting, in boxes or crates | 60 |
| 156648 | Bodies , electric interrupter, glass fiber and plastic, see Note, item 156649, in packages | 77.5 |
| 156649 | NOTE—Applies only on tubular bodies having walls not less than 3/8 inch in thickness and whether or not ready for assembly with electrical components of interrupters. | |
| 156650 | Bolting Cloth Cleaners or Sieve Frame Liners , in boxes..... | 85 |
| 156652 | Bodies , shotgun shell, not exceeding 3/4 inch in diameter, in boxes | 150 |
| 156660 | Bumpers or Springs , NOI, combined or not combined with steel, see Note, item 156661, in packages..... | 77.5 |
| 156661 | NOTE—Does not apply on air springs. For applicable provisions, see item 177905, 'Air Springs.' | |

*Published in Supplement 1 to NMF 100-AV, effective April 9, 2022.

SUBJECT 2

Present Classification Provisions — Continued

| Item | Description | Class |
|--------|--|-------|
| | PLASTIC OR RUBBER ARTICLES, OTHER THAN EXPANDED, GROUP: subject to item 156500 | |
| 156680 | Carriers , bottle or can, in rolls on reels, in packages..... | 70 |
| 156690 | Chocks , wheel, molded solid rubber or laminated sections of old tires, with or without steel hardware or eyebolts | 55 |
| 156700 | Coasters , tableware, nested, in boxes | 85 |
| 156705 | Compounds , molding, containing chopped fiberglass, filler and resin, see Note, item 156707, in rolls in packages having a density in pounds per cubic foot of 50 or greater | 60 |
| 156707 | NOTE—Density must be shown by shipper on shipping orders and bills of lading at time of shipment. If density is not shown and shipment is inadvertently accepted, charges will initially be assessed under the provisions for 'Plastic Articles, NOI' per item 156600. Upon satisfactory proof of actual density, freight charges will be adjusted accordingly. | |
| 156730 | Containers , refuse, salvage or waste, conveying or dumping type, for use with hoists or lift trucks, nested, in nests having a density in pounds per cubic foot of 8 or greater, see Notes, items 156731 and 156732..... | 100 |
| 156731 | NOTE—Hardware necessary for assembly must be in boxes and casters or wheels for the containers must be in packages. | |
| 156732 | NOTE—Density must be shown by the shipper on shipping orders and bills of lading at time of shipment. If density is not shown and shipment is inadvertently accepted, charges will initially be assessed under the provisions for 'Plastic Articles, NOI,' per item 156600. Upon satisfactory proof of actual density, freight charges will be adjusted accordingly. | |
| 156740 | Cores , wire rope or cable, in boxes or on reels | 70 |
| 156750 | Covers or Jackets , flowerpot or plantpot, plastic film, separate or combined with other materials, in boxes..... | 300 |
| 156760 | Covers or Protectors , plant, nested, in boxes..... | 70 |
| 156780 | Door Check Straps , in boxes..... | 92.5 |
| 156790 | Faucets, NOI, or Bibcocks , in boxes..... | 100 |
| 156800 | Fillers or Flats , egg case or egg carrier, nested solid, in boxes..... | 65 |
| 156820 | Film or Sheeting , flock coated or printed with flock, in packages..... | 100 |

SUBJECT 2

Present Classification Provisions — Continued

| Item | Description | Class |
|----------|---|-------|
| | PLASTIC OR RUBBER ARTICLES, OTHER THAN EXPANDED, GROUP: subject to item 156500 | |
| 156830** | Film or Sheeting , NOI, see Note, item 156831, in boxes, crates, wrapped bundles or rolls, or Packages 2057, 2059 or 2221, see Note, item 156832: | |
| Sub 1 | Food or pharmaceutical grade, see Note, item 156834, subject to Item 170 and having a density in pounds per cubic foot of: | |
| Sub 2 | Less than 15 | 110 |
| Sub 3 | 15 but less than 30 | 77.5 |
| Sub 4 | 30 or greater..... | 65 |
| Sub 5 | Other than food or pharmaceutical grade as defined in Note, item 156834, subject to Item 170 and having a density in pounds per cubic foot of: | |
| Sub 6 | Less than 15 | 92.5 |
| Sub 7 | 15 but less than 30 | 65 |
| Sub 8 | 30 or greater..... | 55 |
| 156831 | NOTE—Does not apply on self-supporting (rigid) plastic sheet or plate. For applicable provisions, see item 156300. | |
| 156832 | NOTE—Film or sheeting tendered for shipment on lift truck skids or pallets must not overhang the skid or pallet deck, and all exposed surfaces and edges must be completely wrapped with plastic film or corrugated fiberboard. Film or sheeting stacked on lift truck skids or pallets must be secured to the lift truck skid or pallet by means necessary to withstand the normal rigors of the less-than-truckload environment. | |
| 156834 | NOTE—The term 'food or pharmaceutical grade' embraces film or sheeting that will be used in connection with food, foodstuffs, pharmaceuticals or other applications, and where exposure of the film or sheeting to hazardous materials, odor-emitting freight, debris or other contaminants will result in a claim for, or refusal of, all or part of the shipment. Bills of lading and shipping orders must be so notated, and shipping containers or packages must also be so marked. | |
| 156845 | Fingers , picking or stripping, for poultry processing equipment, in boxes | 70 |
| 156860 | Holders , telephone, in boxes..... | 150 |
| 156870 | Indicators or Signals , plant soil moisture, wick type, plastic, coated with water sensitive chemicals, in boxes | 100 |
| 156910 | Lumber , in packages, having a density in pounds per cubic foot of 35 or greater, see Notes, items 156911 and 156912..... | 55 |
| 156911 | NOTE—Does not apply on finished articles, assembled or disassembled, fabricated from plastic lumber. | |

**Published in Supplement 4 to NMF 100-AV, effective December 17, 2022.

SUBJECT 2

Present Classification Provisions — Continued

| Item | Description | Class |
|---------|---|-------|
| | PLASTIC OR RUBBER ARTICLES, OTHER THAN EXPANDED, GROUP: subject to item 156500 | |
| 156912 | NOTE—Density must be shown by shipper on shipping orders and bills of lading at time of shipment. If density is not shown and shipment is inadvertently accepted, class will initially be assessed under the provisions of item 156600, 'Plastic or Rubber Articles, NOI, other than expanded.' Upon submission of satisfactory proof of an actual density in pounds per cubic foot of 35 or greater, class will be adjusted accordingly. | |
| 156920 | Markers or Tags , plant or tree identification or plant care instruction, plastic film or sheeting, plain, printed or lithographed, in boxes..... | 65 |
| 156950 | Moldings, Channels, Splines or Strips , glass or screen cloth retaining, in boxes..... | 77.5 |
| 156960 | Netting , in tubular form, collapsed, in boxes, subject to Item 170 and having a density in pounds per cubic foot of: | |
| Sub 1 | Less than 8..... | 175 |
| Sub 2 | 8 but less than 12..... | 100 |
| Sub 3 | 12 or greater..... | 70 |
| 157020 | Pumpkins, Pumpkin Lanterns (Jack-O'-Lanterns) or Pumpkin Toys , plastic, with or without components of other materials, in boxes..... | 300 |
| 157060 | Rings , fruit jar, in boxes or drums..... | 77.5 |
| 157130 | Speed Bumps , in packages..... | 70 |
| 157160 | Straps, Strapping, or Webbing , upholstery, with or without cord fabric reinforcement, with or without metal end clips, in boxes..... | 77.5 |
| 157170 | Straps, Strips, Rope or Cord , NOI, lashing, tying or tightening, see Note, item 157172, with or without metal hooks or fasteners, in packages.... | 70 |
| 157172 | NOTE—Applies only when other than of twisted, braided or stranded construction. | |
| 157190 | Tape , carton sealing, polypropylene or polyester plastic film, adhesive coated, see Note, item 157192, in boxes..... | 60 |
| 157192 | NOTE—Applies only on carton sealing tape in rolls of not less than 36 yards. | |
| 157205 | Tips , crutch or furniture, in boxes..... | 85 |
| 157215* | Tire Patches, Plugs or Liners , in boxes, subject to Item 170 and having a density in pounds per cubic foot of: | |
| Sub 1 | Less than 15..... | 92.5 |
| Sub 2 | 15 or greater..... | 70 |

*Published in Supplement 2 to NMF 100-AV, effective August 13, 2022.

SUBJECT 2

Present Classification Provisions — Continued

| Item | Description | Class |
|--------|--|-------|
| | PLASTIC OR RUBBER ARTICLES, OTHER THAN EXPANDED, GROUP: subject to item 156500 | |
| 157242 | Traffic or Road Markers , including Cones, Barrels, Drums or Posts , in packages, see Note, item 157243, subject to Item 170 and having a density in pounds per cubic foot of: | |
| Sub 1 | Less than 1 | 400 |
| Sub 2 | 1 but less than 2 | 300 |
| Sub 3 | 2 but less than 4 | 250 |
| Sub 4 | 4 but less than 6 | 175 |
| Sub 5 | 6 but less than 8 | 125 |
| Sub 6 | 8 but less than 10 | 100 |
| Sub 7 | 10 but less than 12 | 92.5 |
| Sub 8 | 12 but less than 15 | 85 |
| Sub 9 | 15 but less than 22.5 | 70 |
| Sub 10 | 22.5 but less than 30 | 65 |
| Sub 11 | 30 or greater | 60 |
| 157243 | NOTE—Traffic or road marker barrels or drums may be shipped loose. | |
| 157250 | Wrappers , tubular, woven plastic film, in packages | 70 |

THIS SPACE INTENTIONALLY LEFT BLANK

SUBJECT 2

Present Classification Provisions — Continued

| Item | Description | Class |
|---------|---|-------|
| 157300 | PLASTIC OR RUBBER ARTICLES OR MATERIALS, EXPANDED, GROUP: Articles consist of Plastic or Rubber Articles or Materials, foam, cellular, expanded or sponge, see Item 110, Sec. 15 and Note, item 157302, as described in items subject to this grouping. | |
| 157302 | NOTE—Unless otherwise provided, provisions also apply when articles have components or affixed accessories made from other materials. | |
| 157320* | Articles, Forms or Materials, viz.: Articles , NOI, see Note, item 157321; Beads ; Blocks , NOI, see Note, item 157321; Boot or Shoe Forms or Trees , other than display forms or trees; Boxes or Chests , cooling, NOI, or Coolers , NOI, hand portable; Containers , liquid or beverage serving, hand portable; Flakes or Granules ; Floats , NOI; Forms or Shapes , NOI, see Note, item 157321; Grips , NOI, including Golf Club, Hand Tool or Handlebar Grips ; Ground ; Ice Buckets ; Insulation , NOI, see Notes, items 157321 and 157322; Molding , facing, baseboard or cove, including Ceiling Medallions or Cornices ; Plates , see Note, item 157321; Rods ; Sheets , NOI, see Notes, items 157321 and 157322; Shredded ; Slabs , see Note, item 157321; Tubes , NOI; Tubing , NOI, other than flexible; In bags, boxes or drums, subject to Item 170 and having a density in pounds per cubic foot of: | |
| Sub 1 | Less than 1 | 400 |
| Sub 2 | 1 but less than 2..... | 300 |
| Sub 3 | 2 but less than 4..... | 250 |
| Sub 4 | 4 but less than 6..... | 175 |
| Sub 5 | 6 but less than 8..... | 125 |
| Sub 6 | 8 but less than 10..... | 100 |
| Sub 7 | 10 but less than 12..... | 92.5 |
| Sub 8 | 12 but less than 15..... | 85 |
| Sub 9 | 15 but less than 22.5..... | 70 |
| Sub 10 | 22.5 but less than 30..... | 65 |
| Sub 11 | 30 or greater..... | 60 |

*Published in Supplement 1 to NMF 100-AV, effective April 9, 2022.

SUBJECT 2

Present Classification Provisions — Concluded

| Item | Description | Class |
|---------|---|-------|
| | PLASTIC OR RUBBER ARTICLES OR MATERIALS, EXPANDED, GROUP: subject to item 157300 | |
| 157321* | NOTE—Also applies when faced one or both sides with other materials but does not apply on combinations of flexible cellular, expanded or foam plastic or rubber and cloth or fabric. | |
| 157322* | NOTE—Does not apply on polypropylene in sheet form, polyethylene in sheet form or polystyrene in sheet form, when the packaged density as shipped is less than 1 pound per cubic foot. Such articles are classified in item 157463. | |
| 157463 | Film; Insulation, Pads or Padding, in sheet form; Sheets or Sheeting; polypropylene, polyethylene or polystyrene, in packages having a density of less than one pound per cubic foot..... | 500 |
| | STANDS: subject to item 178350 | |
| 178690 | Stands, other than furniture, viz.: Stands, NOI; [Other Articles Listed—Not Involved.] In packages, subject to Item 170 and having a density in pounds per cubic foot of: | |
| Sub 1 | Less than 1 | 400 |
| Sub 2 | 1 but less than 2..... | 300 |
| Sub 3 | 2 but less than 4..... | 250 |
| Sub 4 | 4 but less than 6..... | 175 |
| Sub 5 | 6 but less than 8..... | 125 |
| Sub 6 | 8 but less than 10..... | 100 |
| Sub 7 | 10 but less than 12..... | 92.5 |
| Sub 8 | 12 but less than 15..... | 85 |
| Sub 9 | 15 but less than 22.5..... | 70 |
| Sub 10 | 22.5 but less than 30..... | 65 |
| Sub 11 | 30 or greater..... | 60 |

*Published in Supplement 1 to NMF 100-AV, effective April 9, 2022.

SUBJECT 2

Proposed Classification Provisions

| Item | Description | Class |
|--------|---|--------------------------|
| 25328 | Bobbins; Cores , winding or filter; Cop Tubes; Dye Tubes; Pirns; Reels; or Spools ; plastic, etc | ⇒Cancel; see item 156600 |
| | CLOTHING GROUP: subject to item 49790 | |
| 49880 | Clothing , see Notes, items 49881 and 49885, viz.: Clothing, Garments or Apparel , NOI; [Other Articles Listed—No Change.] In boxes or Packages 1401 or 2265, subject to Item 170 and having a density in pounds per cubic foot of: | |
| Sub 1 | Less than 1 | 400 |
| Sub 2 | 1 but less than 2..... | 300 |
| Sub 3 | 2 but less than 4..... | 250 |
| Sub 4 | 4 but less than 6..... | 175 |
| Sub 5 | 6 but less than 8..... | 125 |
| Sub 6 | 8 but less than 10..... | 100 |
| Sub 7 | 10 but less than 12..... | 92.5 |
| Sub 8 | 12 but less than 15..... | 85 |
| Sub 9 | 15 but less than 22.5..... | 70 |
| Sub 10 | 22.5 but less than 30..... | 65 |
| Sub 11 | 30 or greater..... | 60 |
| 49881 | NOTE—No Change. | |
| 49885 | NOTE—No Change. | |
| 49886 | NOTE—No Change. | |
| | COOLERS GROUP: subject to item 53000 | |
| 53025 | Coolers, Iceboxes or Refrigerators , NOI, without mechanical cooling or freezing apparatus, see Note, item 53026, in boxes, crates or Package 107, subject to Item 170 and having a density in pounds per cubic foot of: | |
| Sub 1 | Less than 1 | 400 |
| Sub 2 | 1 but less than 2 | 300 |
| Sub 3 | 2 but less than 4 | 250 |
| Sub 4 | 4 but less than 6 | 175 |
| Sub 5 | 6 but less than 8 | 125 |
| Sub 6 | 8 but less than 10 | 100 |
| Sub 7 | 10 but less than 12 | 92.5 |
| Sub 8 | 12 but less than 15 | 85 |
| Sub 9 | 15 but less than 22.5 | 70 |
| Sub 10 | 22.5 but less than 30 | 65 |
| Sub 11 | 30 or greater | 60 |
| 53026 | NOTE—No Change. | |

SUBJECT 2

Proposed Classification Provisions — Continued

| Item | Description | Class |
|--------|--|-------|
| 56290 | <p>Decorations, Notions or Novelties, see Notes, items 56291 and 56292, viz.: Curios, Figures, Images, Ornaments, Sculpture or Statuary, NOI, see Note, item 56295; Decorations, Notions or Novelties, NOI; Decorations or Ornaments, Christmas tree or holiday, NOI; [Other Articles Listed—No Change.] In boxes, subject to Item 170 and having a density in pounds per cubic foot of:</p> | |
| Sub 1 | Less than 1 | 400 |
| Sub 2 | 1 but less than 2 | 300 |
| Sub 3 | 2 but less than 4 | 250 |
| Sub 4 | 4 but less than 6 | 175 |
| Sub 5 | 6 but less than 8 | 125 |
| Sub 6 | 8 but less than 10 | 100 |
| Sub 7 | 10 but less than 12 | 92.5 |
| Sub 8 | 12 but less than 15 | 85 |
| Sub 9 | 15 but less than 22.5..... | 70 |
| Sub 10 | 22.5 but less than 30..... | 65 |
| Sub 11 | 30 or greater..... | 60 |
| 56291 | NOTE—No Change. | |
| 56292 | NOTE—No Change. | |
| 56294 | NOTE—No Change. | |
| 56295 | NOTE—No Change. | |
| | ELECTRICAL EQUIPMENT GROUP: subject to item 60500 | |
| 63160 | <p>Switches, Switch Boxes, Electrical Enclosures or Electrical Wiring Equipment, see Note, item 63162, viz.: Fittings, electrical conduit, NOI; [Other Articles Listed—No Change.] In boxes, see Note, item 63161, subject to Item 170 and having a density in pounds per cubic foot of:</p> | |
| Sub 1 | Less than 1 | 400 |
| Sub 2 | 1 but less than 2..... | 300 |
| Sub 3 | 2 but less than 4..... | 250 |
| Sub 4 | 4 but less than 6..... | 175 |
| Sub 5 | 6 but less than 8..... | 125 |
| Sub 6 | 8 but less than 10..... | 100 |
| Sub 7 | 10 but less than 12..... | 92.5 |
| Sub 8 | 12 but less than 15..... | 85 |
| Sub 9 | 15 but less than 22.5..... | 70 |
| Sub 10 | 22.5 but less than 30..... | 65 |
| Sub 11 | 30 or greater..... | 60 |
| 63161 | NOTE—No Change. | |
| 63162 | NOTE—No Change. | |
| 63163 | NOTE—No Change. | |

SUBJECT 2

Proposed Classification Provisions — Continued

| Item | Description | Class |
|--------|---|-------|
| | GAMES OR TOYS GROUP: subject to item 83900 | |
| 84260 | Games or Toys, viz.: Games or Toys, NOI; [Other Articles Listed—No Change.] In boxes or Packages 2213, 2249 or 2296, subject to Item 170 and having a density in pounds per cubic foot of: | |
| Sub 1 | Less than 1 | 400 |
| Sub 2 | 1 but less than 2..... | 300 |
| Sub 3 | 2 but less than 4..... | 250 |
| Sub 4 | 4 but less than 6..... | 175 |
| Sub 5 | 6 but less than 8..... | 125 |
| Sub 6 | 8 but less than 10..... | 100 |
| Sub 7 | 10 but less than 12..... | 92.5 |
| Sub 8 | 12 but less than 15..... | 85 |
| Sub 9 | 15 but less than 22.5..... | 70 |
| Sub 10 | 22.5 but less than 30..... | 65 |
| Sub 11 | 30 or greater..... | 60 |
| 84261 | NOTE—No Change. | |
| 84262 | NOTE—No Change. | |
| | INSULATION OR INSULATING MATERIAL GROUP: subject to item 103000 | |
| 103300 | Insulation or Insulating Material, viz.: Insulation or Insulating Material, NOI; [Other Articles Listed—No Change.] In packages, subject to Item 170 and having a density in pounds per cubic foot of: | |
| Sub 1 | Less than 1 | 400 |
| Sub 2 | 1 but less than 2..... | 300 |
| Sub 3 | 2 but less than 4..... | 250 |
| Sub 4 | 4 but less than 6..... | 175 |
| Sub 5 | 6 but less than 8..... | 125 |
| Sub 6 | 8 but less than 10..... | 100 |
| Sub 7 | 10 but less than 12..... | 92.5 |
| Sub 8 | 12 but less than 15..... | 85 |
| Sub 9 | 15 but less than 22.5..... | 70 |
| Sub 10 | 22.5 but less than 30..... | 65 |
| Sub 11 | 30 or greater..... | 60 |
| 103301 | NOTE—No Change. | |

SUBJECT 2

Proposed Classification Provisions — Continued

| Item | Description | Class |
|--------|---|-------|
| | LAMPS OR LIGHTING GROUP: subject to item 109000 | |
| 109700 | Lamps or Lighting Fixtures, see Notes, items 109701, 109702, 109703 and 109704, viz.: Lamps, NOI, also in Packages 817, 1424, 2204 or 5F; [Other Articles Listed—No Change.] In boxes or crates, subject to Item 170 and having a density in pounds per cubic foot of, see Note, item 109706: | |
| Sub 1 | Less than 1 | 400 |
| Sub 2 | 1 but less than 2..... | 300 |
| Sub 3 | 2 but less than 4..... | 250 |
| Sub 4 | 4 but less than 6..... | 175 |
| Sub 5 | 6 but less than 8..... | 125 |
| Sub 6 | 8 but less than 10..... | 100 |
| Sub 7 | 10 but less than 12..... | 92.5 |
| Sub 8 | 12 but less than 15..... | 85 |
| Sub 9 | 15 but less than 22.5..... | 70 |
| Sub 10 | 22.5 but less than 30..... | 65 |
| Sub 11 | 30 or greater..... | 60 |
| 109701 | NOTE—No Change. | |
| 109702 | NOTE—No Change. | |
| 109703 | NOTE—No Change. | |
| 109704 | NOTE—No Change. | |
| 109705 | NOTE—No Change. | |
| 109706 | NOTE—No Change. | |
| | MACHINERY GROUP: subject to item 114000 | |
| 133300 | Machinery or Machines, NOI, or Machinery or Machine Parts, NOI: Sub 1 In boxes, crates or Packages 107, 1082 or 2107, subject to Item 170 and having a density in pounds per cubic foot of: | |
| Sub 2 | Less than 5 | 250 |
| Sub 3 | 5 but less than 10 | 125 |
| Sub 4 | 10 but less than 15 | 85 |
| Sub 5 | 15 or greater..... | 65 |
| Sub 6 | On skids or in packages other than boxes, crates or Packages 107, 1082 or 2107, subject to Item 170 and having a density in pounds per cubic foot of: | |
| Sub 7 | Less than 5 | 400 |
| Sub 8 | 5 but less than 10 | 175 |
| Sub 9 | 10 but less than 15 | 100 |
| Sub 10 | 15 or greater..... | 77.5 |

SUBJECT 2

Proposed Classification Provisions — Continued

| Item | Description | Class |
|--------|--|-------|
| 149265 | <p>PADS, PADDING AND RELATED ARTICLES GROUP: subject to item 149000</p> <p>⇒Pads, Padding, Cushions or Pillows, viz.:</p> <p>Berms, spill containment;</p> <p>Booms, Pads, Sweeps or Other Forms or Shapes, chemical or oil absorption;</p> <p>Cushions, aircraft seat or railway car seat;</p> <p>Cushions, automotive safety restraint system, cloth (Air Bag Inflator Cushions);</p> <p>Cushions, NOI;</p> <p>Excelsior, NOI; or Shredded Paper Packing Material;</p> <p>Futons;</p> <p>Packing Material, loosefill, NOI, including Packing Peanuts, Pellets, Disks or Other Forms or Shapes;</p> <p>Pads, mattress;</p> <p>Pads or Cushions, packing; excelsior, grass, hay, straw or shredded or macerated paper;</p> <p>Pads or Padding, NOI;</p> <p>Pillows or Pillow Forms (Unfinished Pillows), NOI;</p> <p>Seat Backs, railway car, upholstered or padded;</p> <p>In packages, subject to Item 170 and having a density in pounds per cubic foot of:</p> | |
| Sub 1 | Less than 1 400 | 400 |
| Sub 2 | 1 but less than 2..... 300 | 300 |
| Sub 3 | 2 but less than 4..... 250 | 250 |
| Sub 4 | 4 but less than 6..... 175 | 175 |
| Sub 5 | 6 but less than 8..... 125 | 125 |
| Sub 6 | 8 but less than 10..... 100 | 100 |
| Sub 7 | 10 but less than 12..... 92.5 | 92.5 |
| Sub 8 | 12 but less than 15..... 85 | 85 |
| Sub 9 | 15 but less than 22.5..... 70 | 70 |
| Sub 10 | 22.5 but less than 30..... 65 | 65 |
| Sub 11 | 30 or greater..... 60 | 60 |
| 149269 | NOTE—⇒Cancel; no further application. | |

SUBJECT 2

Proposed Classification Provisions — Continued

| Item | Description | Class |
|--------|---|-------|
| 156500 | ⇒ PLASTIC OR RUBBER ARTICLES GROUP: Except as provided in item 156600, items subject to this grouping apply on Plastic or Rubber Articles, other than foam, cellular, expanded or sponge. See Item 110, Sec. 15 and Note, item 156502. | |
| 156502 | NOTE—Unless otherwise ⇒specified, provisions also apply when articles have components or affixed accessories made from other materials. | |
| 156600 | <p>Articles, ⇒see Note, item NEW, viz.:</p> <p>Articles, NOI;</p> <p>⇒Bands, elastic, including Rubber Bands;</p> <p>⇒Baskets, Holders or Filters, coffee, automatic coffee maker, plastic and cloth combined;</p> <p>⇒Bobbins; Cores, winding or filter; Cop Tubes; Dye Tubes; Pirns; Reels; or Spools;</p> <p>⇒Boot or Shoe Forms or Trees, other than display forms or trees;</p> <p>Caps, Covers, Discs, Ends, Bands, Rings or Tops, NOI, for bottles, cans, cups, collapsible tubes, glasses, jars or jugs;</p> <p>Car Seats, child or baby;</p> <p>Columns; or other Forms or Shapes, NOI; architectural;</p> <p>Containers, packaging, NOI;</p> <p>Dinnerware or Tableware, NOI;</p> <p>⇒Faucets, NOI, or Bibcocks;</p> <p>⇒Film or Sheeting, foam, cellular, expanded or sponge plastic or rubber, NOI;</p> <p>⇒Filmstrip or Audio or Video Cassette Storage Albums;</p> <p>⇒Garbage, Waste, Refuse or Recycling Cans or Containers;</p> <p>Gloves, see Note, item 156604;</p> <p>Grips, NOI, including Golf Club, Hand Tool or Handlebar Grips;</p> <p>Liners, swimming pool, plastic film or sheeting;</p> <p>⇒Materials, Forms or Shapes, foam, cellular, expanded or sponge plastic or rubber, NOI;</p> <p>Mats, bathtub, shower stall, drainboard, sink or stove protector;</p> <p>⇒Molding, facing, baseboard or cove, foam, cellular, expanded or sponge plastic or rubber, including Ceiling Medallions or Cornices;</p> <p>Molding, other than ⇒facing, baseboard or cove;</p> <p>⇒Motion Picture Film Cans, Cores, Magazines, Reels or Film Spools, empty;</p> <p>Pipe or Pipe Fittings;</p> <p>Poultry Watering Systems, see Note, item 156603;</p> <p>⇒Straps, Bungee Cord or Shock Cord, lashing, tying or securing, with or without hooks or other fasteners or fittings;</p> <p>Tanks, NOI;</p> | |

SUBJECT 2

Proposed Classification Provisions — Continued

| Item | Description | Class |
|--|---|-------|
| PLASTIC OR RUBBER ARTICLES GROUP: subject to item 156500 | | |
| Articles: subject to item 156600 | | |
| ⇒ Tape , NOI; | | |
| ⇒ Tips , crutch or furniture; | | |
| ⇒ Tire Patches, Plugs or Liners; | | |
| Tractor Treads , rubber; | | |
| ⇒ Traffic or Road Markers , including Cones, Barrels, Drums or Posts; | | |
| Tubing , NOI, other than flexible; | | |
| In boxes, crates, drums or Packages 1078, 1241, 1273 or 2213, see Note, item 156602, subject to Item 170 and having a density in pounds per cubic foot of: | | |
| Sub 1 | Less than 1 | 400 |
| Sub 2 | 1 but less than 2..... | 300 |
| Sub 3 | 2 but less than 4..... | 250 |
| Sub 4 | 4 but less than 6..... | 175 |
| Sub 5 | 6 but less than 8..... | 125 |
| Sub 6 | 8 but less than 10..... | 100 |
| Sub 7 | 10 but less than 12..... | 92.5 |
| Sub 8 | 12 but less than 15..... | 85 |
| Sub 9 | 15 but less than 22.5..... | 70 |
| Sub 10 | 22.5 but less than 30..... | 65 |
| Sub 11 | 30 or greater..... | 60 |
| ⇒NEW | NOTE—Except as otherwise specified, this item applies on plastic or rubber articles whether or not of foam, cellular, expanded or sponge construction. | |
| 156602 | NOTE—The following departures from packing requirements are permitted: 1-8. No Change. 9. ⇒ Plastic chairs may be shipped in Package 31F. 10. The following articles may be shipped in packages: a. ⇒Garbage, waste, refuse or recycling cans or containers; b. Plastic bottle carrying boxes or crates; c. Plastic tanks, other than outer shipping containers; d. Poultry watering systems; ⇒e. Traffic or road markers, including cones, barrels, drums or posts. | |
| 156603 | NOTE—Applies on poultry watering systems consisting of pipe, plastic drinkers, water filtering, metering or regulating devices and equipment necessary for installation, with or without other components or accessories. | |
| 156604 | NOTE—Does not apply on any commodity which is defined and specified as medical waste in Federal regulations. For applicable class, see item 101682. | |

SUBJECT 2

Proposed Classification Provisions — Continued

| Item | Description | Class |
|--------|---|----------------------------------|
| | PLASTIC OR RUBBER ARTICLES GROUP: subject to item 156500 | |
| 156620 | Aprons or Bibs , plastic film, expendable, etc | ⇒Cancel; see item 49880 |
| 156630 | Bands , elastic, including Rubber Bands , etc | ⇒Cancel; see item 156600 |
| 156640 | Bars, Blocks or Rods , NOI, etc | ⇒Cancel; see item 156600 |
| 156642 | Baskets, Holders or Filters , coffee, automatic coffee maker, plastic and cloth combined, etc | ⇒Cancel; see item 156600 |
| 156643 | Bends, Elbows or Sweeps , electrical conduit, not exceeding four inches in diameter, etc | ⇒Cancel; see item 63160 |
| 156644 | Blanks , button, plastic, etc | ⇒Cancel; believed to be obsolete |
| 156645 | Blocks or Spacers , floor mat, etc | ⇒Cancel; see item 156600 |
| 156647 | Boards or Blocks , cutting, etc | ⇒Cancel; see item 156600 |
| 156648 | Bodies , electric interrupter, glass fiber and plastic, see Note, item 156649, etc | ⇒Cancel; believed to be obsolete |
| 156649 | NOTE—⇒Cancel; no further application. | |
| 156650 | Bolting Cloth Cleaners or Sieve Frame Liners , etc | ⇒Cancel; believed to be obsolete |
| 156652 | Bodies , shotgun shell, not exceeding ¾ inch in diameter, etc..... | ⇒Cancel; see item 156600 |
| 156660 | Bumpers or Springs , NOI, combined or not combined with steel, see Note, item 156661, etc..... | ⇒Cancel; see item 156600 |
| 156661 | NOTE—⇒Cancel; no further application. | |
| 156680 | Carriers , bottle or can, etc | ⇒Cancel; see item 156600 |
| 156690 | Chocks , wheel, molded solid rubber or laminated sections of old tires, etc | ⇒Cancel; see item 156600 |
| 156700 | Coasters , tableware, nested, etc | ⇒Cancel; see item 156600 |
| 156705 | Compounds , molding, containing chopped fiberglass, filler and resin, see Note, item 156707, etc | ⇒Cancel; see item 156600 |
| 156707 | NOTE—⇒Cancel; no further application. | |

SUBJECT 2

Proposed Classification Provisions — Continued

| Item | Description | Class |
|--------|--|--------------------------|
| | PLASTIC OR RUBBER ARTICLES GROUP: subject to item 156500 | |
| 156730 | Containers , refuse, salvage or waste, conveying or dumping type, for use with hoists or lift trucks, nested, in nests having a density in pounds per cubic foot of 8 or greater, see Notes, items 156731 and 156732..... | ⇒Cancel; see item 156600 |
| 156731 | NOTE—⇒Cancel; no further application. | |
| 156732 | NOTE—⇒Cancel; no further application. | |
| 156740 | Cores , wire rope or cable, etc | ⇒Cancel; see item 156600 |
| 156750 | Covers or Jackets , flowerpot or plantpot, plastic film, separate or combined with other materials, etc..... | ⇒Cancel; see item 156600 |
| 156760 | Covers or Protectors , plant, nested, etc..... | ⇒Cancel; see item 156600 |
| 156780 | Door Check Straps , etc..... | ⇒Cancel; see item 156600 |
| 156790 | Faucets, NOI, or Bibcocks , etc | ⇒Cancel; see item 156600 |
| 156800 | Fillers or Flats , egg case or egg carrier, nested solid, etc..... | ⇒Cancel; see item 156600 |
| 156820 | Film or Sheeting , flock coated or printed with flock, etc | ⇒Cancel; see item 156830 |
| 156830 | Film or Sheeting , NOI, see Note, item 156831, in boxes, crates, wrapped bundles or rolls, or Packages 2057, 2059 or 2221, see Note, item 156832: | |
| Sub 1 | Food or pharmaceutical grade, see Note, item 156834, subject to Item 170 and having a density in pounds per cubic foot of: | |
| Sub 2 | Less than 15 | 110 |
| Sub 3 | 15 but less than 30 | 77.5 |
| Sub 4 | 30 or greater..... | 65 |
| Sub 5 | Other than food or pharmaceutical grade as defined in Note, item 156834, subject to Item 170 and having a density in pounds per cubic foot of: | |
| Sub 6 | Less than 15 | 92.5 |
| Sub 7 | 15 but less than 30 | 65 |
| Sub 8 | 30 or greater..... | 55 |
| 156831 | NOTE—Does not apply on self-supporting (rigid) plastic sheet or plate. For applicable provisions, see item 156300. | |

SUBJECT 2

Proposed Classification Provisions — Continued

| Item | Description | Class |
|--------|---|--|
| | PLASTIC OR RUBBER ARTICLES GROUP: subject to item 156500 | |
| 156832 | NOTE—Film or sheeting tendered for shipment on lift truck skids or pallets must not overhang the skid or pallet deck, and all exposed surfaces and edges must be completely wrapped with plastic film or corrugated fiberboard. Film or sheeting stacked on lift truck skids or pallets must be secured to the lift truck skid or pallet by means necessary to withstand the normal rigors of the less-than-truckload environment. | |
| 156834 | NOTE—The term 'food or pharmaceutical grade' embraces film or sheeting that will be used in connection with food, foodstuffs, pharmaceuticals or other applications, and where exposure of the film or sheeting to hazardous materials, odor-emitting freight, debris or other contaminants will result in a claim for, or refusal of, all or part of the shipment. Bills of lading and shipping orders must be so notated, and shipping containers or packages must also be so marked. | |
| 156845 | Fingers , picking or stripping, for poultry processing equipment, etc | ⇒Cancel; see item 133300 |
| 156860 | Holders , telephone, etc | ⇒Cancel; see item 178690 and provisions otherwise applicable |
| 156870 | Indicators or Signals , plant soil moisture, wick type, plastic, coated with water sensitive chemicals, etc | ⇒Cancel; believed to be obsolete |
| 156910 | Lumber , in packages, having a density in pounds per cubic foot of 35 or greater, see Notes, items 156911 and 156912 | 55 |
| 156911 | NOTE—Does not apply on finished articles, assembled or disassembled, fabricated from plastic lumber. | |
| 156912 | NOTE—Density must be shown by shipper on shipping orders and bills of lading at time of shipment. If density is not shown and shipment is inadvertently accepted, class will initially be assessed under the provisions of item 156600, ⇒'Plastic or Rubber Articles, NOI.' Upon submission of satisfactory proof of an actual density in pounds per cubic foot of 35 or greater, class will be adjusted accordingly. | |
| 156920 | Markers or Tags , plant or tree identification or plant care instruction, plastic film or sheeting, plain, printed or lithographed, etc | ⇒Cancel; see item 156600 |
| 156950 | Moldings, Channels, Splines or Strips , glass or screen cloth retaining, etc | ⇒Cancel; see item 156600 |
| 156960 | Netting , in tubular form, collapsed, etc | ⇒Cancel; see item 156600 |

SUBJECT 2

Proposed Classification Provisions — Continued

| Item | Description | Class |
|--------|--|--|
| | PLASTIC OR RUBBER ARTICLES GROUP: subject to item 156500 | |
| 157020 | Pumpkins, Pumpkin Lanterns (Jack-O'-Lanterns) or Pumpkin Toys, plastic, with or without components of other materials, etc | ⇒Cancel; see items 56290, 84260, 109700 and 156600 |
| 157060 | Rings, fruit jar, etc | ⇒Cancel; believed to be obsolete |
| 157130 | Speed Bumps, etc | ⇒Cancel; see item 156600 |
| 157160 | Straps, Strapping, or Webbing, upholstery, etc | ⇒Cancel; see item 156600 and provisions otherwise applicable |
| 157170 | Straps, Strips, Rope or Cord, NOI, lashing, tying or tightening, see Note, item 157172, etc | ⇒Cancel; see item 156600 |
| 157172 | NOTE— | ⇒Cancel; no further application. |
| 157190 | Tape, carton sealing, polypropylene or polyester plastic film, adhesive coated, see Note, item 157192, etc | ⇒Cancel; see item 156600 |
| 157192 | NOTE— | ⇒Cancel; no further application. |
| 157205 | Tips, crutch or furniture, etc | ⇒Cancel; see item 156600 |
| 157215 | Tire Patches, Plugs or Liners, etc | ⇒Cancel; see item 156600 |
| 157242 | Traffic or Road Markers, including Cones, Barrels, Drums or Posts, etc | ⇒Cancel; see item 156600 |
| 157243 | NOTE— | ⇒Cancel; no further application. |
| 157250 | Wrappers, tubular, woven plastic film, etc | ⇒Cancel; see item 156600 |
| 157300 | PLASTIC OR RUBBER ARTICLES OR MATERIALS, EXPANDED, GROUP, etc | ⇒Cancel; no further application |
| 157302 | NOTE— | ⇒Cancel; no further application. |
| 157320 | Articles, Forms or Materials, etc | ⇒Cancel; see items 53025, 103300 and 156600 |
| 157321 | NOTE— | ⇒Cancel; no further application. |
| 157322 | NOTE— | ⇒Cancel; no further application. |
| 157463 | Film; Insulation, Pads or Padding, in sheet form; Sheets or Sheeting; polypropylene, polyethylene or polystyrene, in packages having a density of less than one pound per cubic foot | ⇒Cancel; see items 103300, 149265 and 156600 |

SUBJECT 2

Proposed Classification Provisions — Concluded

| Item | Description | Class |
|--------|--|-------|
| | STANDS: subject to item 178350 | |
| 178690 | Stands , other than furniture, viz.: Stands , NOI; [Other Articles Listed—No Change.] In packages, subject to Item 170 and having a density in pounds per cubic foot of: | |
| Sub 1 | Less than 1 | 400 |
| Sub 2 | 1 but less than 2..... | 300 |
| Sub 3 | 2 but less than 4..... | 250 |
| Sub 4 | 4 but less than 6..... | 175 |
| Sub 5 | 6 but less than 8..... | 125 |
| Sub 6 | 8 but less than 10..... | 100 |
| Sub 7 | 10 but less than 12..... | 92.5 |
| Sub 8 | 12 but less than 15..... | 85 |
| Sub 9 | 15 but less than 22.5..... | 70 |
| Sub 10 | 22.5 but less than 30..... | 65 |
| Sub 11 | 30 or greater..... | 60 |

Analysis

Introduction

There are currently two separate generic headings for plastic or rubber articles—items 156500 and 157300—with the distinction being whether or not the articles are of foam, cellular, expanded or sponge construction. The general, “catch-all” items for the two groups—items 156600 and 157320, respectively—both assign the FCDC’s standard 11-subprovision density scale. Item 25328, naming “Bobbins; Cores, winding or filter; Cop Tubes; Dye Tubes; Pirns; Reels; or Spools; plastic,” which falls under neither generic heading, and item 157242, naming “Plastic or Rubber Traffic or Road Markers, including Cones, Barrels, Drums or Posts,” likewise assign the 11-subprovision density scale.

Additionally, a number of the provisions under items 156500 and 157300 can be difficult to interpret, apply or verify, and several appear to be obsolete. Also, some of the products named would be more-appropriately classified with other, related products elsewhere in the NMFC.

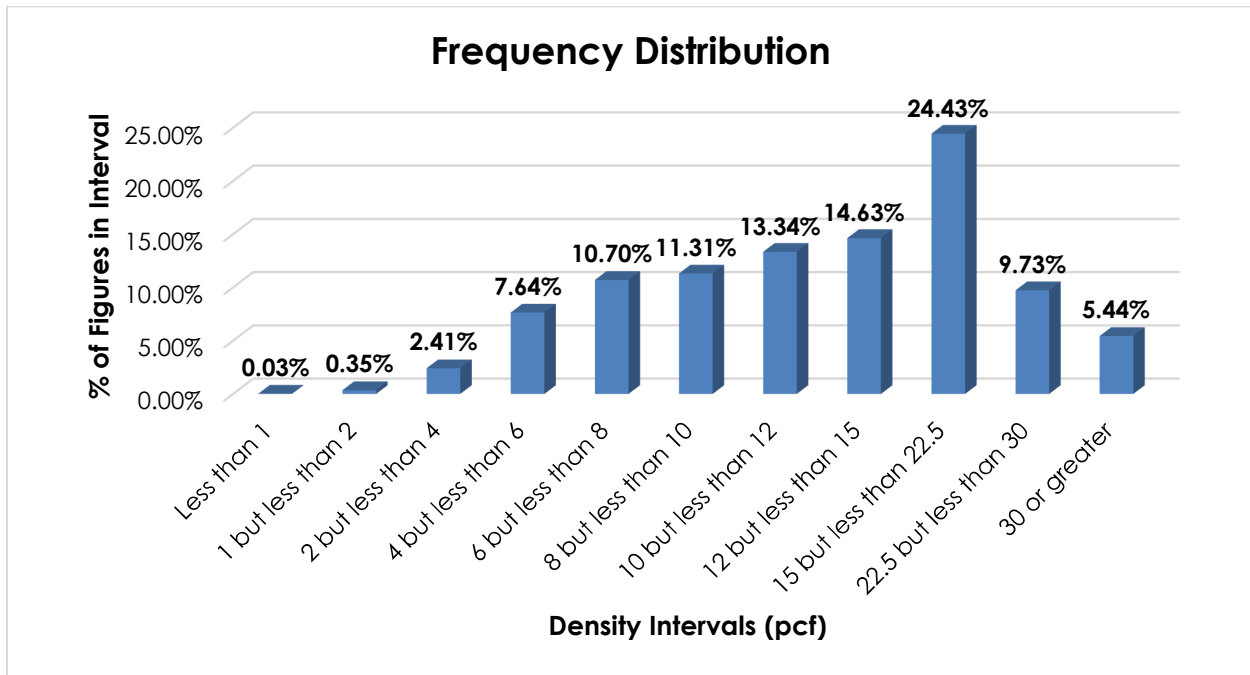
All this creates undue complexity.

Moreover, the involved products exhibit a wide range of densities. The following transportation characteristics relate to items 156620, 156630, 156640, 156642, 156643, 156645, 156647, 156652, 156660, 156680, 156690, 156700, 156705, 156730, 156740, 156750, 156760, 156780, 156790, 156800, 156820, 156845, 156860, 156920, 156950, 156960, 157020, 157130, 157160, 157170, 157190, 157205, 157215, 157250 and 157463, as shown in the Present Classification Provisions herein.

SUBJECT 2

Transportation Characteristics

Density—The information of record includes 91,587 density observations submitted by a carrier, collected during a dock survey and obtained from the FCDC’s Density Study¹. The densities range from 0.81 to 49.69 pcf, with an overall average density of 14.59 pcf. As shown in the graph below, the densities are widely distributed throughout most of the range.



Handling, Stowability and Liability—There have been no reports of unusual or significant handling, stowability or liability concerns.

Conclusion

Based on the foregoing analysis, and to improve the usability of the NMFC, this proposal would: reclassify multiple plastic or rubber articles; cancel obsolete provisions; amend minimum packaging requirements, on the recommendation of the FCDC’s Packaging Manager; and make other changes in the interest of clarification, simplification and uniformity.

¹ The Density Study is part of an ongoing effort by the FCDC to collect information on actual shipments across all product categories handled by the LTL industry. Carriers that choose to participate in the Study periodically submit shipment data captured through their respective freight auditing programs. The FCDC uses verifiable data points, identified by NMFC item, that include the weight and the dimensions and/or cube of the shipping unit.